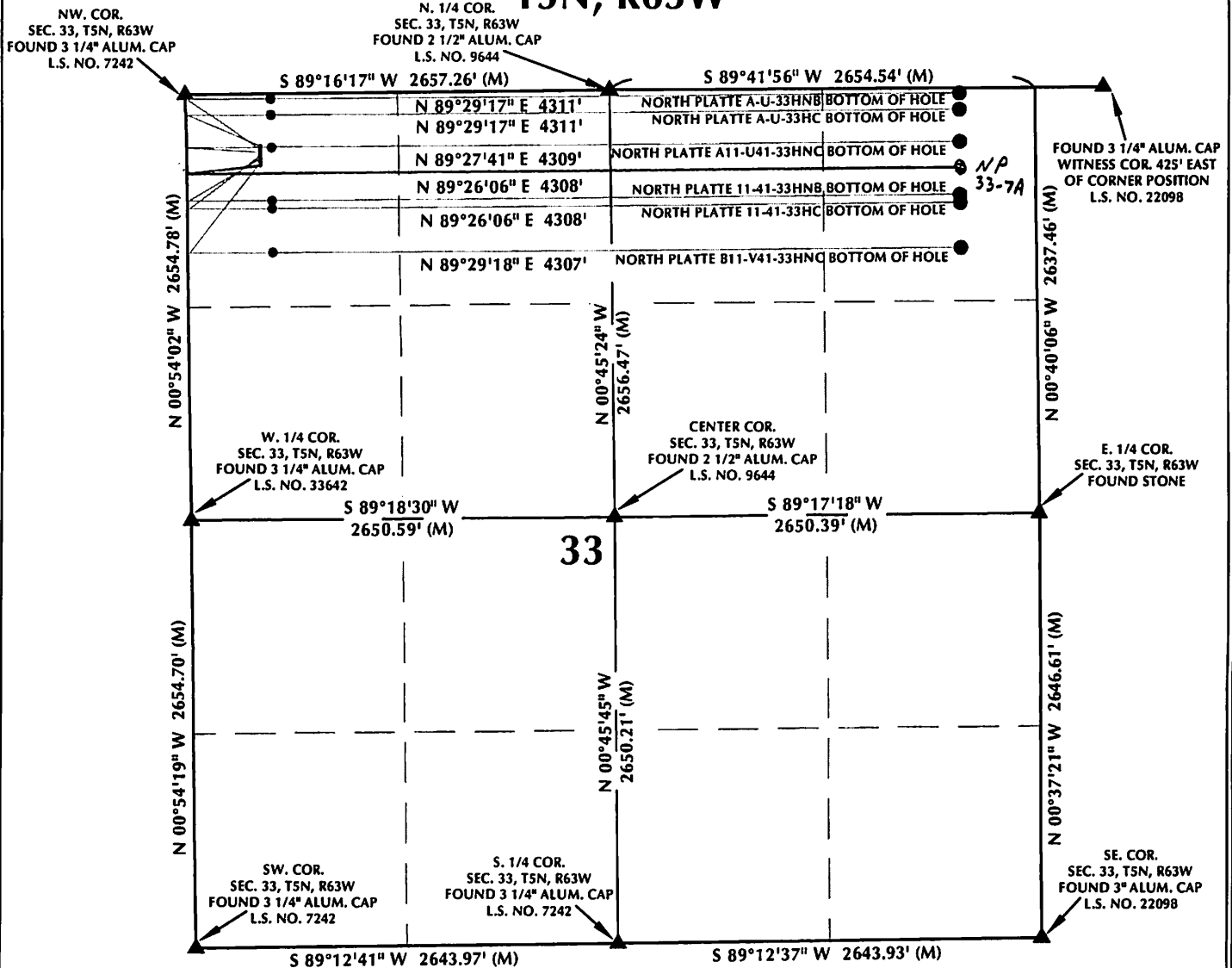


# NORTH PLATTE A-33 T5N, R63W



## WELL NOTES:

**NORTH PLATTE A-U-33HC**  
SURFACE: 322' FNL, 458' FWL  
LATITUDE: 40.362382°  
LONGITUDE: -104.448807°

**NORTH PLATTE A-U-33HNB**  
SURFACE: 342' FNL, 458' FWL  
LATITUDE: 40.362327°  
LONGITUDE: -104.448807°

**NORTH PLATTE A11-U41-33HNC**  
SURFACE: 362' FNL, 458' FWL  
LATITUDE: 40.362272°  
LONGITUDE: -104.448806°

**NORTH PLATTE 11-41-33HC**  
SURFACE: 382' FNL, 458' FWL  
LATITUDE: 40.362217°  
LONGITUDE: -104.448806°

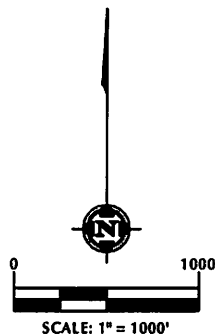
**NORTH PLATTE 11-41-33HNB**  
SURFACE: 402' FNL, 458' FWL  
LATITUDE: 40.362162°  
LONGITUDE: -104.448806°

**NORTH PLATTE B11-V41-33HNC**  
SURFACE: 422' FNL, 458' FWL  
LATITUDE: 40.362107°  
LONGITUDE: -104.448806°

**NP 33-7A**  
SURFACE: 442' FNL, 458' FWL  
LATITUDE: 40.362052°  
LONGITUDE: -104.448805°

## NOTES:

- ▲ INDICATES FOUND SECTION CORNER
- INDICATES CALCULATED CORNER
- BASIS OF BEARING DERIVED FROM COLORADO COORDINATE SYSTEM 1983 NORTH ZONE UNLESS OTHERWISE NOTED.
- ALL MEASURED DISTANCES ARE GRID.
- COMBINED SCALE FACTOR: .99974361
- WELL FOOTAGES ARE MEASURED AT RIGHT ANGLES TO THE SECTION LINES.



## WELL PAD - NORTH PLATTE A-33

MULTI-WELL PLAN  
NORTH PLATTE A-U-33HC, NORTH PLATTE A-U-33HNB,  
NORTH PLATTE A11-U41-33HNC,  
NORTH PLATTE 11-41-33HC,  
NORTH PLATTE 11-41-33HNB &  
NORTH PLATTE B11-V41-33HNC  
LOCATED IN SECTION 33  
T5N, R63W, 6TH P.M.  
WELD COUNTY, COLORADO

**BONANZA CREEK**  
410 17th Street, Suite 1400  
Denver, Colorado 80202



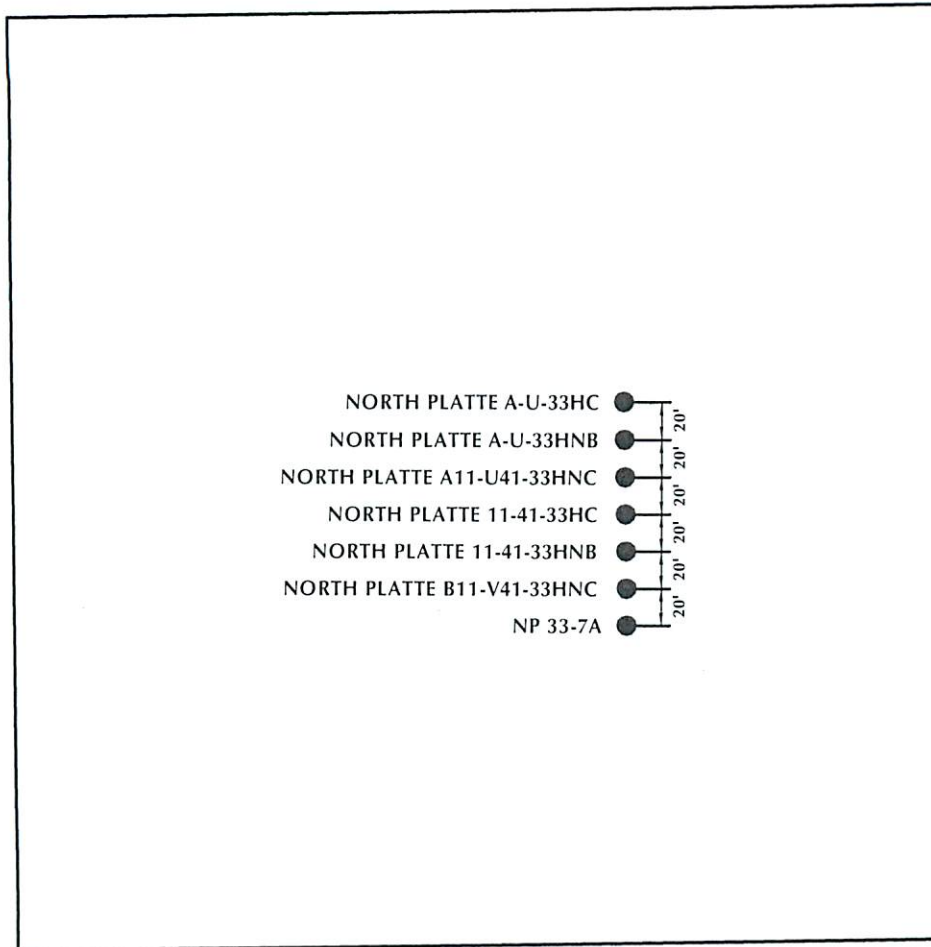
## CONSULTING, LLC

SHERIDAN OFFICE  
2155 North Main Street  
Sheridan, Wyoming 82801  
Phone 307-674-0609

LOVELAND OFFICE  
1633 Foxtrail Drive, Suite 104  
Loveland, Colorado 80538  
Phone 970-776-4331

DRAFTED BY:	LMO	CHECKED BY:	BJR	SHEET NO:
DATE DRAFTED:	11/8/13	DATE SURVEYED:	10/28/13	1
REVISED:	4/17/14	FILE NAME:	13-94	1 OF 2

# NORTH PLATTE A-33 T5N, R63W

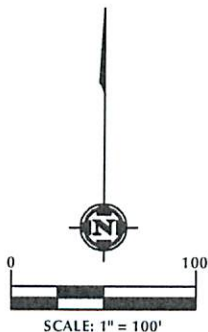


NORTH PLATTE A-U-33HC  
NORTH PLATTE A-U-33HNB  
NORTH PLATTE A11-U41-33HNC  
NORTH PLATTE 11-41-33HC  
NORTH PLATTE 11-41-33HNB  
NORTH PLATTE B11-V41-33HNC  
NP 33-7A

## WELL NOTES:

**NORTH PLATTE A-U-33HC**  
SURFACE: 322' FNL, 458' FWL  
LATITUDE: 40.362382°  
LONGITUDE: -104.448807°  
**NORTH PLATTE A-U-33HNB**  
SURFACE: 342' FNL, 458' FWL  
LATITUDE: 40.362327°  
LONGITUDE: -104.448807°  
**NORTH PLATTE A11-U41-33HNC**  
SURFACE: 362' FNL, 458' FWL  
LATITUDE: 40.362272°  
LONGITUDE: -104.448806°  
**NORTH PLATTE 11-41-33HC**  
SURFACE: 382' FNL, 458' FWL  
LATITUDE: 40.362217°  
LONGITUDE: -104.448806°

**NORTH PLATTE 11-41-33HNB**  
SURFACE: 402' FNL, 458' FWL  
LATITUDE: 40.362162°  
LONGITUDE: -104.448806°  
**NORTH PLATTE B11-V41-33HNC**  
SURFACE: 422' FNL, 458' FWL  
LATITUDE: 40.362107°  
LONGITUDE: -104.448806°  
**NP 33-7A**  
SURFACE: 442' FNL, 458' FWL  
LATITUDE: 40.362052°  
LONGITUDE: -104.448805°



## NOTES:

1. ▲ INDICATES FOUND SECTION CORNER
2. ● INDICATES CALCULATED CORNER
3. BASIS OF BEARING DERIVED FROM COLORADO COORDINATE SYSTEM 1983 NORTH ZONE UNLESS OTHERWISE NOTED.
4. ALL MEASURED DISTANCES ARE GRID.  
COMBINED SCALE FACTOR: .99974361
5. WELL FOOTAGES ARE MEASURED AT RIGHT ANGLES TO THE SECTION LINES.

## WELL PAD - NORTH PLATTE A-33

MULTI-WELL PLAN  
NORTH PLATTE A-U-33HC, NORTH PLATTE A-U-33HNB,  
NORTH PLATTE A11-U41-33HNC,  
NORTH PLATTE 11-41-33HC,  
NORTH PLATTE 11-41-33HNB &  
NORTH PLATTE B11-V41-33HNC  
LOCATED IN SECTION 33  
T5N, R63W, 6TH P.M.  
WELD COUNTY, COLORADO

**BONANZA CREEK**  
410 17th Street, Suite 1400  
Denver, Colorado 80202



## CONSULTING, LLC

**SHERIDAN OFFICE**  
2155 North Main Street  
Sheridan, Wyoming 82801  
Phone 307-674-0609

**LOVELAND OFFICE**  
1635 Foxtrail Drive, Suite 204  
Loveland, Colorado 80538  
Phone 970-776-4331

DRAFTED BY:	LMO	CHECKED BY:	BJR	SHEET NO:
DATE DRAFTED:	11/8/13	DATE SURVEYED:	10/28/13	2
REVISED:	4/17/14	FILE NAME:	13-94	2 OF 2