

Foundation Energy Management, LLC
WELLBORE DIAGRAM

Well / Battery	Prospect Name		Total Depth	Current Status
Cinque 6-31	Spindle		4,973'	SI
Location	Sec-Twn-Rng		Producing Horizon	County & State
NW SE	31-2N-68W		SX-SN	Weld, CO

WELLBORE DIAGRAM BEFORE

Prepared Date: 03/25/2014

Prepared By: Austin Anderson

General Info

API #: 05-123-11171

KB Elevation: 4,952'

GL Elevation: 4,942'

Spud Date: 05-27-1983

Completion Date: 12-23-1986

TVD: 4,973'

MD: 4,973'

Last PBDT: 4,866.94'

Tubing Detail

2-3/8" inch(OD)

4.7 # (weight)

J-55 grade

Tubing Tally (05/17/2013)

136 jts 2 3/8" @ 4389.21"

1 TA @ 4392.61'

15 jts 2 3/8" @ 4,816.96'

1 SN @ 4,818.06'

1 MA @4,838.06'

EOT @ 4,838.06'

Rod Detail (05/17/2013)

Length (ft)

1 Polish Rod 22

2 Pony 14

192 3/4" Rods 4800

Pump Details:

2 x 1 1/4 x 16

Pumping Unit Details:

Lufkin 114-D

Model: 396726

3/23/1999

Well Notes:

Formation Tops

Sussex 4,247'

Shannon 4,824'

Surface Casing

8-5/8" inch (OD)

32 # (weight)

grade

572' depth from KB

Surface cement top

400 sacks of cement

12-1/4" inch (OD) HOLE SIZE

Production Casing

5-1/2" inch (OD)

15.5 # (weight)

grade

4,968' depth from KB

3,662" cement top

185 sacks of cement

7-7/8" inch (OD) HOLE SIZE

Reg. 3% CC 1/4#/sk fl

Visual R

CBL

TOC 3,662'

50/50 poz, 2% gel, 10% salt, 3/4 of 1 % CFR-2 10# gil

Perforations

4,380'-4,440' 2spf 41 holes SX

4,828'-4,878' 2spf 41 holes SN

Stimulation

16,000# sand SX

109,000# 20/40, 126,000# 10/20 and 500 gal 7 1/2% BDA SN

EOT @ 4,838.06'

PBDT: 4,866.94'. (04/18/2006)

Foundation Energy Management, LLC
WELLBORE DIAGRAM

Well / Battery	Prospect Name		Total Depth	Current Status
Cinque 6-31	Spindle		4,973'	SI
Location	Sec-Twn-Rng.		Producing Horizon	County & State
NW SE	31-2N-68W		SX-SN	Weld, CO

WELLBORE DIAGRAM BEFORE.

Prepared Date: 06/19/2014
Prepared By: Braden McMurphy

General Info

API #: 05-123-11171

KB Elevation: 4,952'
GL Elevation: 4,942'

Spud Date: 05-27-1983
Completion Date: 12-23-1986

TVD: 4,973'
MD: 4,973'
Last PBDT: 4,866.94'

Tubing Detail

2-3/8" inch(OD)
4.7 # (weight)
J-55 grade

Tubing Tally (05/17/2013)

136 jts 2 3/8" @ 4389.21"
1 TA @ 4392.61'
15 jts 2 3/8" @ 4,816.96'
1 SN @ 4,818.06'
1 MA @4,838.06'
EOT @ 4,838.06'

Rod Detail (05/17/2013)

	Length (ft)
1 Polish Rod	22
2 Pony	14
192 3/4" Rods	4800

Pump Details:

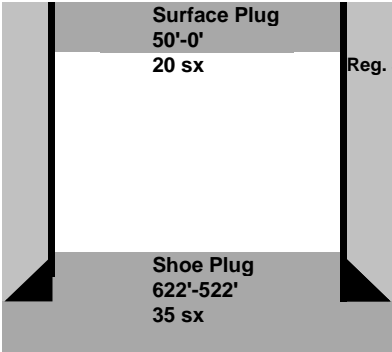
2 x 1 1/4 x 16

Pumping Unit Details:

Lufkin 114-D
Model: 396726
3/23/1999

Well Notes:

Formation Tops
Sussex 4,247'
Shannon 4,824'



Surface Casing

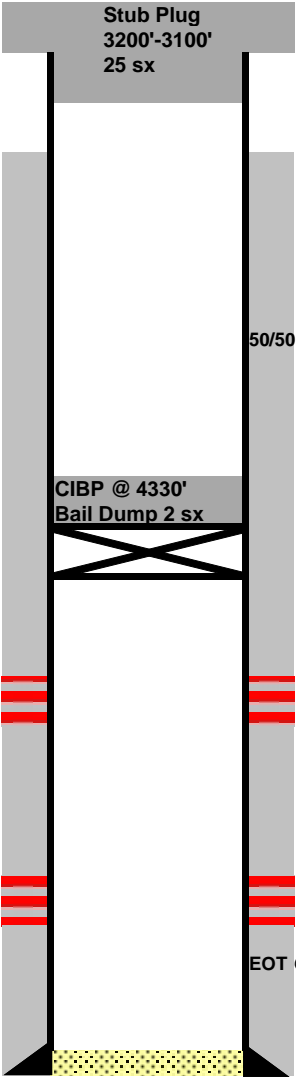
8-5/8" inch (OD)
32 # (weight)
grade
572' depth from KB
Surface cement top
400 sacks of cement
12-1/4" inch (OD) HOLE SIZE

Visual R

Production Casing

5-1/2" inch (OD)
15.5 # (weight)
grade
4,968' depth from KB
3,662" cement top
185 sacks of cement
7-7/8" inch (OD) HOLE SIZE

CBL



TOC 3,662'

50/50 poz, 2% gel, 10% salt, 3/4 of 1 % CFR-2 10# gil

Perforations

4,380'-4,440' 2spf 41 holes SX
4,828'-4,878' 2spf 41 holes SN

Stimulation

16,000# sand SX
109,000# 20/40, 126,000# 10/20 and 500 gal 7 1/2% BDA SN

EOT @ 4,838.06'

PBDT: 4,866.94'. (04/18/2006)