

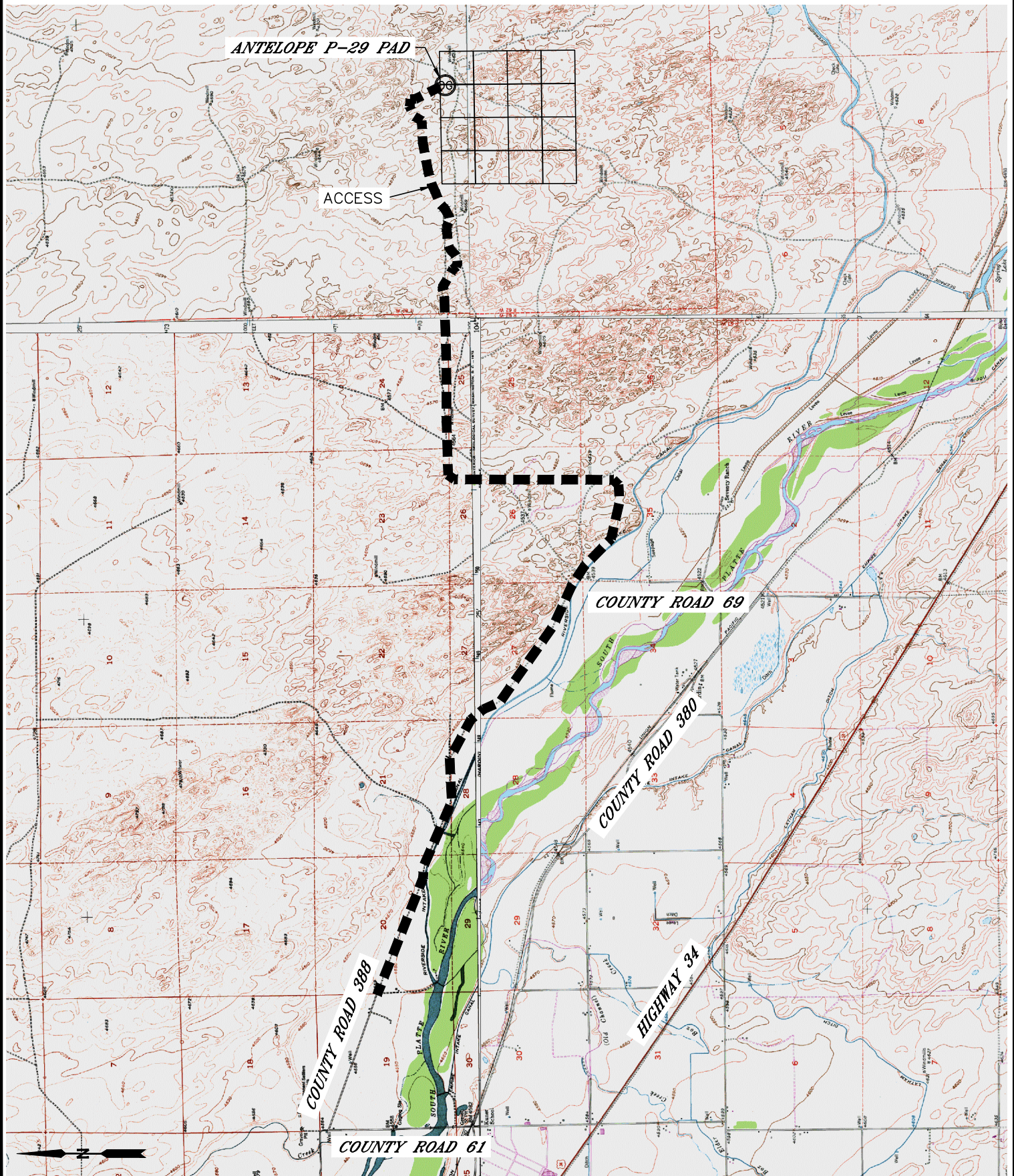


Lat40°, Inc. 1635 Foxtrail Drive, Suite 325 Loveland, CO 970-776-3321

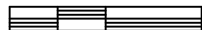
# ACCESS ROAD MAP

ANTELOPE P-29 PAD

SECTION: 29  
TOWNSHIP: 5N  
RANGE: 62W



0 5000



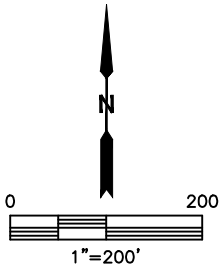
1"=5000'





ACCESS ROAD MAP  
ANTELOPE P-29 PAD

SECTION: 29  
TOWNSHIP: 5N  
RANGE: 62W







Lat40°, Inc. 1635 Foxtrail Drive, Suite 325 Loveland, CO 970-776-3321

## ACCESS ROAD MAP

ANTELOPE P-29 PAD

SECTION: 29  
TOWNSHIP: 5N  
RANGE: 62W

### EXISTING WELLS:

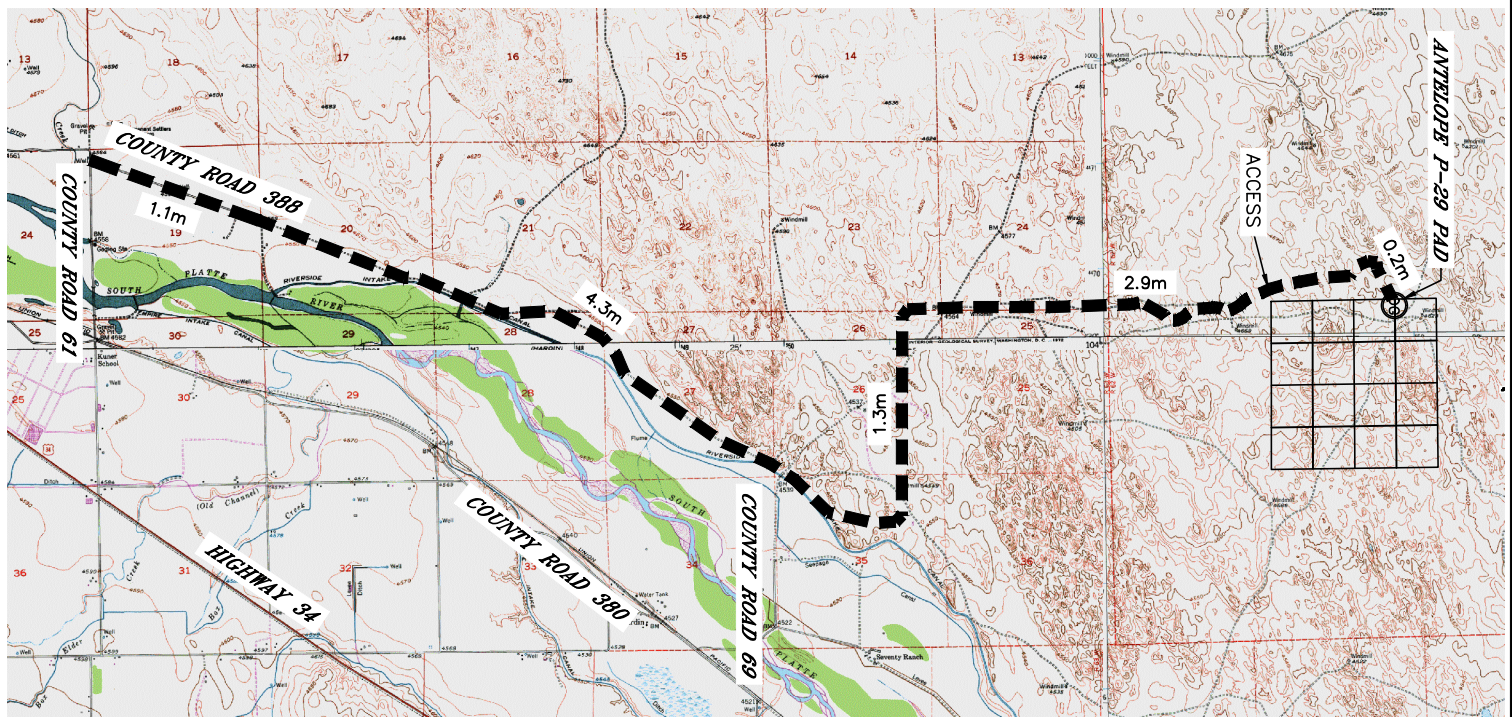
ANTELOPE P-T-29HZ  
ANTELOPE K-O-29HNC

### PROPOSED WELLS:

ANTELOPE U41-Y44-29HC  
ANTELOPE U41-Y44-29HNB  
ANTELOPE 41-44-29HNC  
ANTELOPE P41-T44-29HC  
ANTELOPE P41-Y44-29HNB  
ANTELOPE P-T-29HNC

### DRIVING DIRECTIONS TO ANTELOPE P-29 PAD:

FROM THE INTERSECTION OF COUNTY ROAD 388 AND COUNTY ROAD 61, DRIVE SOUTHEAST ON COUNTY ROAD 388 FOR 1.1 MILES TO A THE 70 RANCH MAIN ACCESS (YELLOW GATE), DRIVE SOUTHEAST ALONG MAIN ACCESS ROAD FOR 4.3 MILES, DRIVE NORTH ALONG MAIN ACCESS ROAD FOR 1.3 MILES, DRIVE EAST ALONG MAIN ACCESS ROAD FOR 2.9 MILES, DRIVE SOUTHEAST ALONG FIELD ACCESS ROAD FOR 0.2 MILES TO THE ANTELOPE P-29 PAD SITE.



0 6000  
1"=6000'