

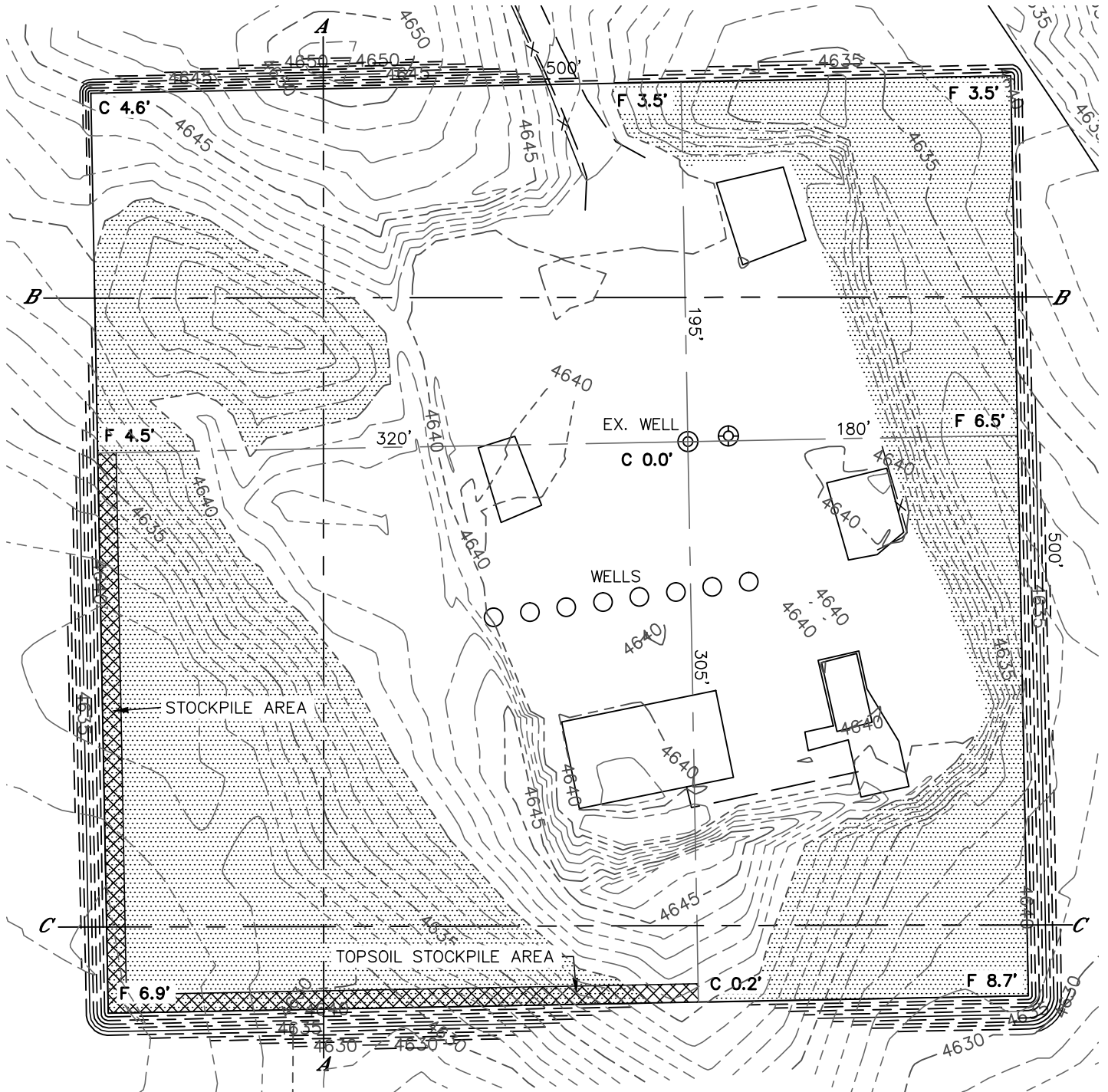


Lat40°, Inc. 1635 Foxtrail Drive, Suite 325 Loveland, CO 970-776-3321

CUT & FILL DIAGRAM

ANTELOPE P-29 PAD

SECTION: 29
TOWNSHIP: 5N
RANGE: 62W



OPERATOR: BONANZA CREEK ENERGY

LOCATION: 199' FNL, 1321' FEL

EXISTING ELEV= 4640.0'

PROPOSED ELEV= 4640.0'

DISTURBANCE= 5.7 ACRES

ESTIMATED EARTHWORK:

TOPSOIL= 10,153 CY

CUT= 8,108 CY

FILL= 23,657 CY

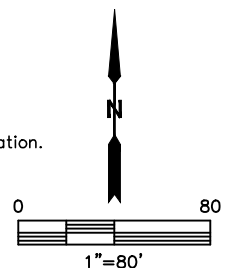
IMPORT= 15,539 CY

NOTE:

- 1) Ground elevations are based on an observed GPS elevation (NAVD 1988 DATUM).
- 2) No allowance has been made for soil expansion or compaction.
- 3) Proposed elevation does not account for top soil removal.
- 4) Top soil volume assumes 12" depth across entire location.
- 5) Fill slopes 2:1
- 6) Cut slopes 1.5:1

LEGEND

EX. CONTOUR	---
PRO. CONTOUR	---
FILL AREA	



SHEET 1 OF 2

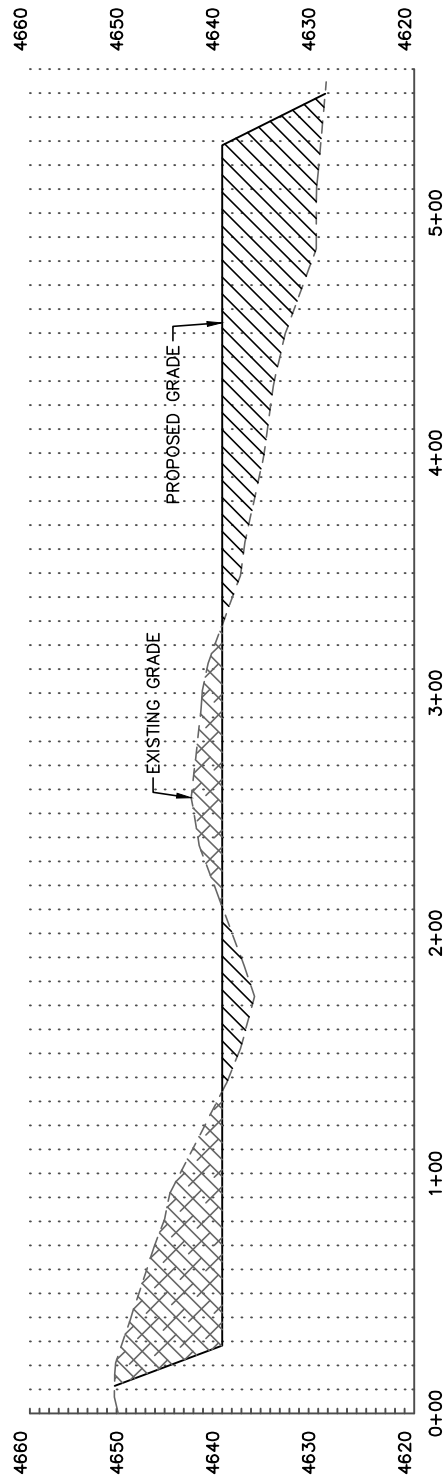
DATE: 6/6/2014
PROJECT#: 2012071



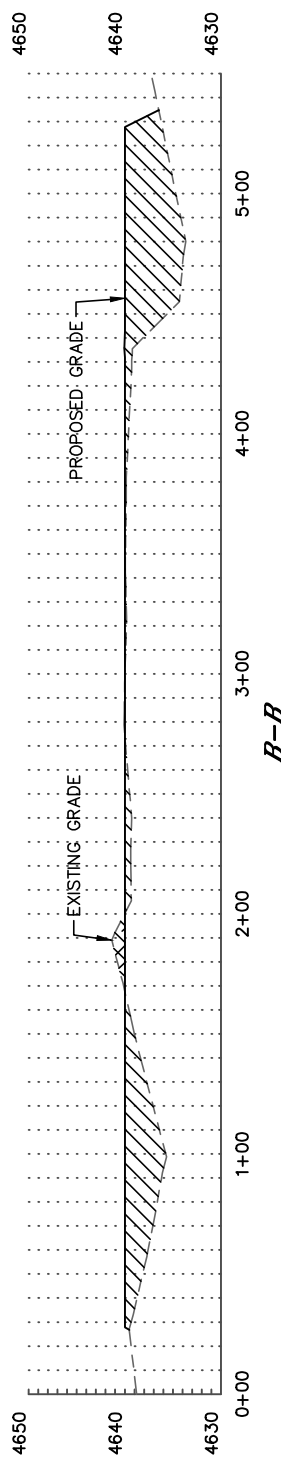
CROSS SECTION DIAGRAM

ANTELOPE P-29 PAD

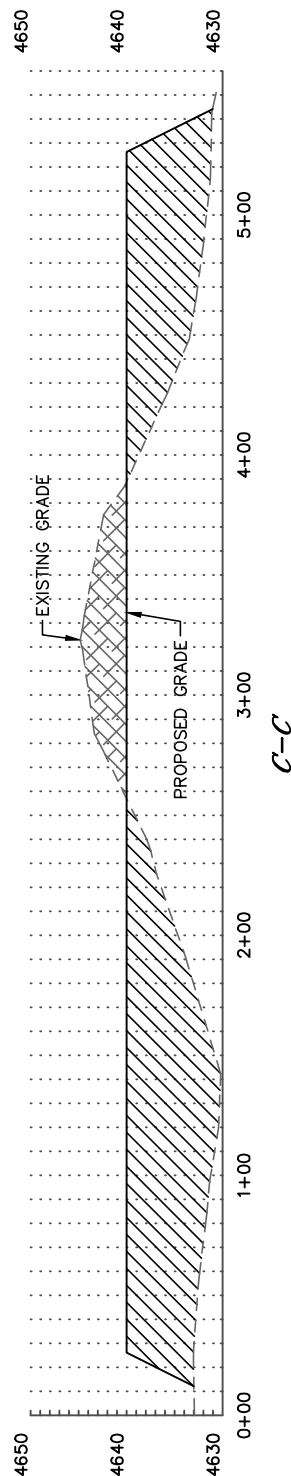
SECTION: 29
TOWNSHIP: 5N
RANGE: 62W



A-A



B-B



C-C

HORIZONTAL SCALE: 1"=80', VERTICAL SCALE: 1"=20'