



Kerr-McGee Oil & Gas Onshore LP

A subsidiary of Anadarko Petroleum Corporation

1099 18th Street
Denver, CO 80202
720-929-6000

June 18, 2014

Department of Natural Resources
Oil and Gas Conservation Commission
The Chancery Building
1120 Lincoln St., Suite 801
Denver, CO 80203

Re: Request for Exception to Rule 317.o
DOUTHIT 40N-27HZ
DOUTHIT 9C-27HZ
DOUTHIT 39N-27HZ
DOUTHIT 16C-27HZ
DOUTHIT 38N-27HZ
Township 3 North, Range 68 West
Section 26: NE/4 SE/4
Weld County, Colorado

Ladies/Gentlemen:

Kerr-McGee Oil & Gas Onshore LP ("KMG") respectfully requests the Director to approve an exception to Rule 317.o and only run an LWD gamma ray log in the horizontal section in the above stated wells on the same well pad. Rule 317.o of the Colorado Oil and Gas Commission's Rules and Regulations requires wells to be logged with a minimum of a resistivity log with gamma ray. The above-named wells are requested to be exempt from this requirement due to the proximity of existing well(s) with acceptable resistivity logs with gamma ray. The available log(s) are within 660 feet of the vertical section(s) of the proposed well(s).

The proposed wells will be logged with an LWD gamma ray log in the horizontal section. The wells will also be cased-hole logged with a cement bond and gamma ray log from the production casing shoe to the surface. The Drilling Completion Report (Form 5) submitted for each well will indicate that no open-hole logs were run.

The existing well(s) below are within 660 feet and have acceptable resistivity logs with gamma ray:

Well Name	Well Number	API Number	Feet From Well(s)	Azimuth (°)	COGCC Well File Document #
DOUTHIT	9-26	0512326215	437	330	1358375

The existing well(s) below are between 660 feet and 1,000 feet and have acceptable resistivity logs with gamma ray:

Well Name	Well Number	API Number	Feet From Well(s)	Azimuth (°)	COGCC Well File Document #
CARMA	33-25	0512327145	614	135	1286077

Should you have any questions, please contact our office. Thank you for your consideration.

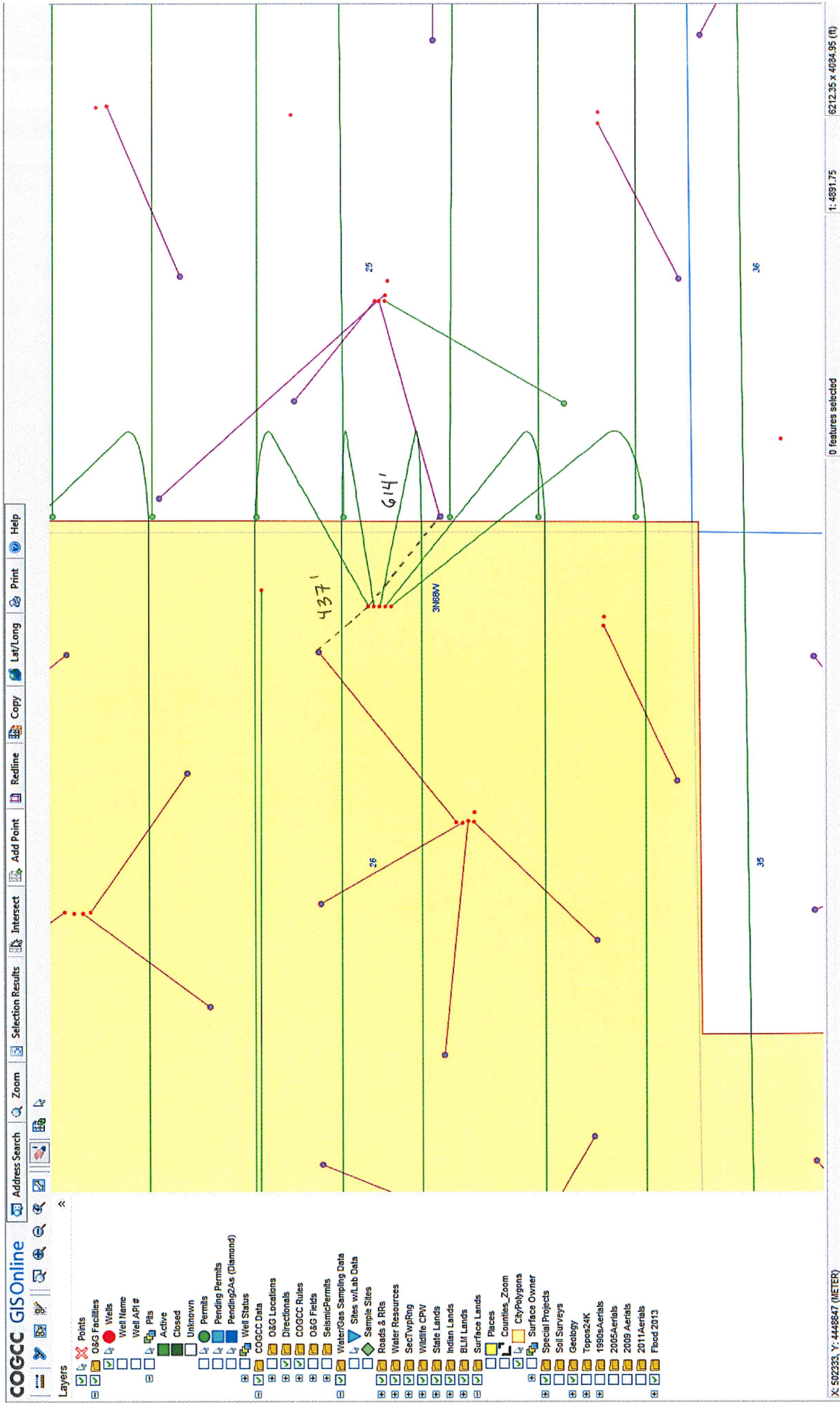
Very truly yours,

Kerr-McGee Oil & Gas Onshore LP

A handwritten signature in black ink, appearing to read "Mike McConaughey". The signature is written in a cursive, flowing style with a large initial "M".

Mike McConaughey
Sr. Regulatory Analyst

Douthit 9-2642 Pad (S)



Measure

Line measurement (Planar)

Segment: 437.330395 Feet

Length: 437.330395 Feet

DOUTHIT 35-26

DOUTHIT 40C-27HZ

DOUTHIT 40N-27HZ

DOUTHIT 32-26HZ

DOUTHIT 9C-27HZ

DOUTHIT 89N-27HZ

DOUTHIT 23-26

DOUTHIT 16C-27HZ

DOUTHIT STATE 38N-27HZ

DOUTHIT 37-26

DEL CAMINO 11-26

DEL CAMINO 14-26

RADEMACHER 32-25

BAREFOOT 33C

BAREFOOT 33N

BAREFOOT 34C

BAREFOOT STATE 3

HANSEN STATE 26C-36HZ

36

35

03N69WSEC

BAREFOOT 32N

Measure

Line measurement (Planar)

Segment: 614.241698 Feet

Length: 614.241698 Feet

08N68N5EC

DOUTHIT 40C-27HZ

DOUTHIT 35-26

BAREFOOT 32N-

DOUTHIT 40N-27HZ

DOUTHIT 32-26HZ

DOUTHIT 9C-27HZ

BAREFOOT 33C-

CARMA 12-25

DEL CAMINO 11-26

DOUTHIT 39N-27HZ

BAREFOOT 33N-

DOUTHIT 23-26

DOUTHIT 9-26

CARMA 13-25

DEL CAMINO 14-26

DOUTHIT 16C-27HZ

BAREFOOT 34C-

BAREFOOT STATE 3

DOUTHIT STATE 38N-27HZ

DOUTHIT 37-26

HANSEN STATE 26C-36HZ

35

36