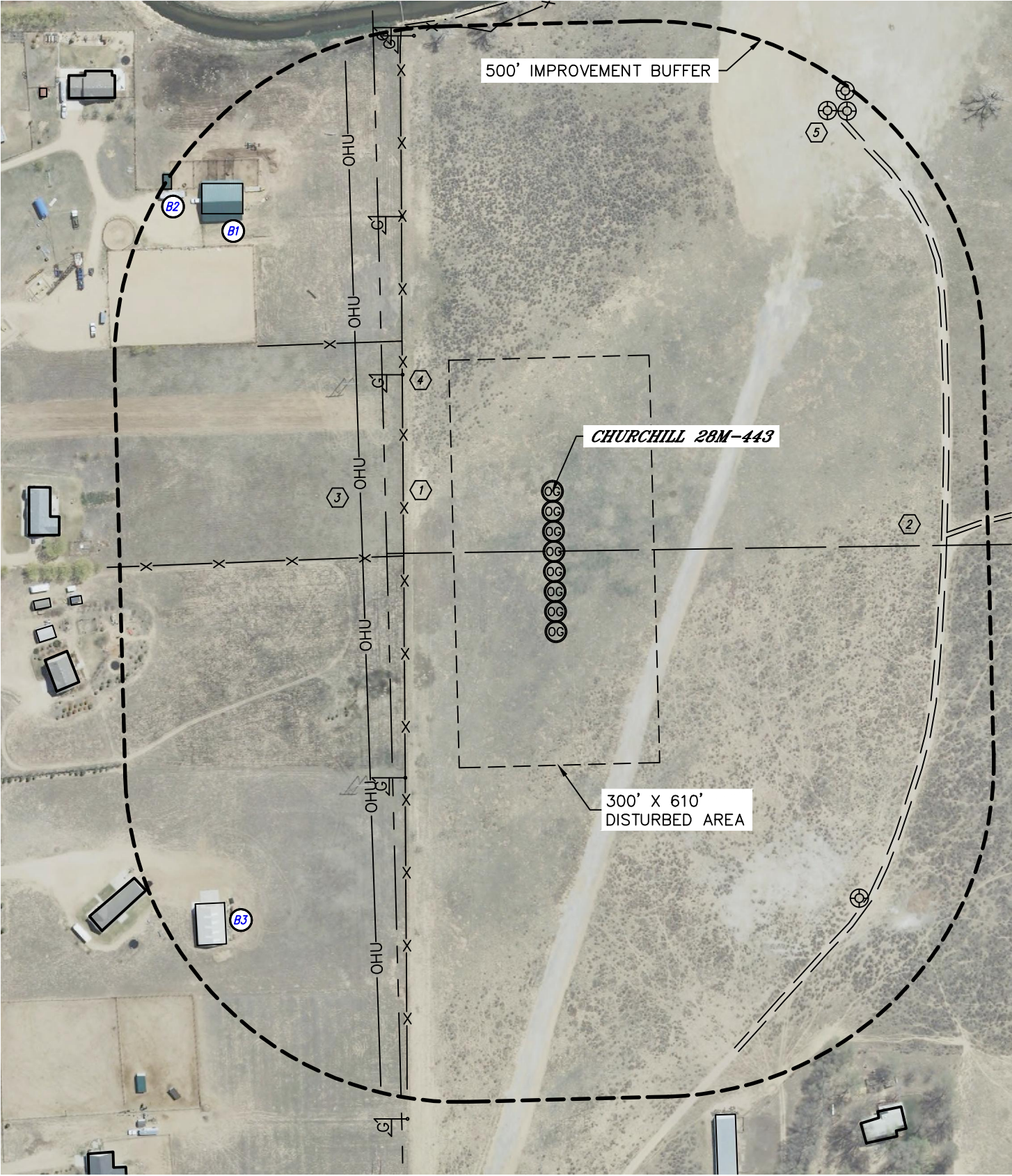




Lat40°, Inc. 1635 Foxtrail Drive, Suite 325 Loveland, CO 970-776-3321

LOCATION DRAWING
CHURCHILL 28J-HZ PAD

SECTION: 28
TOWNSHIP: 5N
RANGE: 64W





Lat40°, Inc. 1635 Foxtrail Drive, Suite 325 Loveland, CO 970-776-3321








LOCATION DRAWING

CHURCHILL 28J-HZ PAD

SECTION: 28
TOWNSHIP: 5N
RANGE: 64W

IMPROVEMENTS:

(MEASURED FROM THE PROPOSED CHURCHILL 28M-443 WELL LOCATION)

-  NO BUILDING UNITS WITHIN 500' IMPROVEMENT BUFFER
-  BUILDING **B1** 622' NE, **B2** 728' NE, **B3** 787' NW
-  FENCE 223' N, 243' NW, 318' NE, 694' E
-  ACCESS 584' & 595' S
-  OVERHEAD UTILITY LINE 287' N
-  GAS MARKER 284', 469' & 712' NE, 481' NW
-  EX. WELL HEAD 703', 720' & 743' NE, 763' SE

NEAREST CULTURAL ITEMS: BUILDING **B1** 622' NE, BUILDING UNIT 740' N, HIGH OCCUPANCY BUILDING UNIT ±2180' NE,
DESIGNATED OUTSIDE ACTIVITY AREA 5280'+, PUBLIC ROAD 863' N (RANGEVIEW DRIVE),
ABOVE GROUND UTILITY 287' N, RAILROAD 2900' N, PROPERTY LINE 250' N

SHEET 2 OF 2

DATE: 11/21/2013
PROJECT#: 2013151