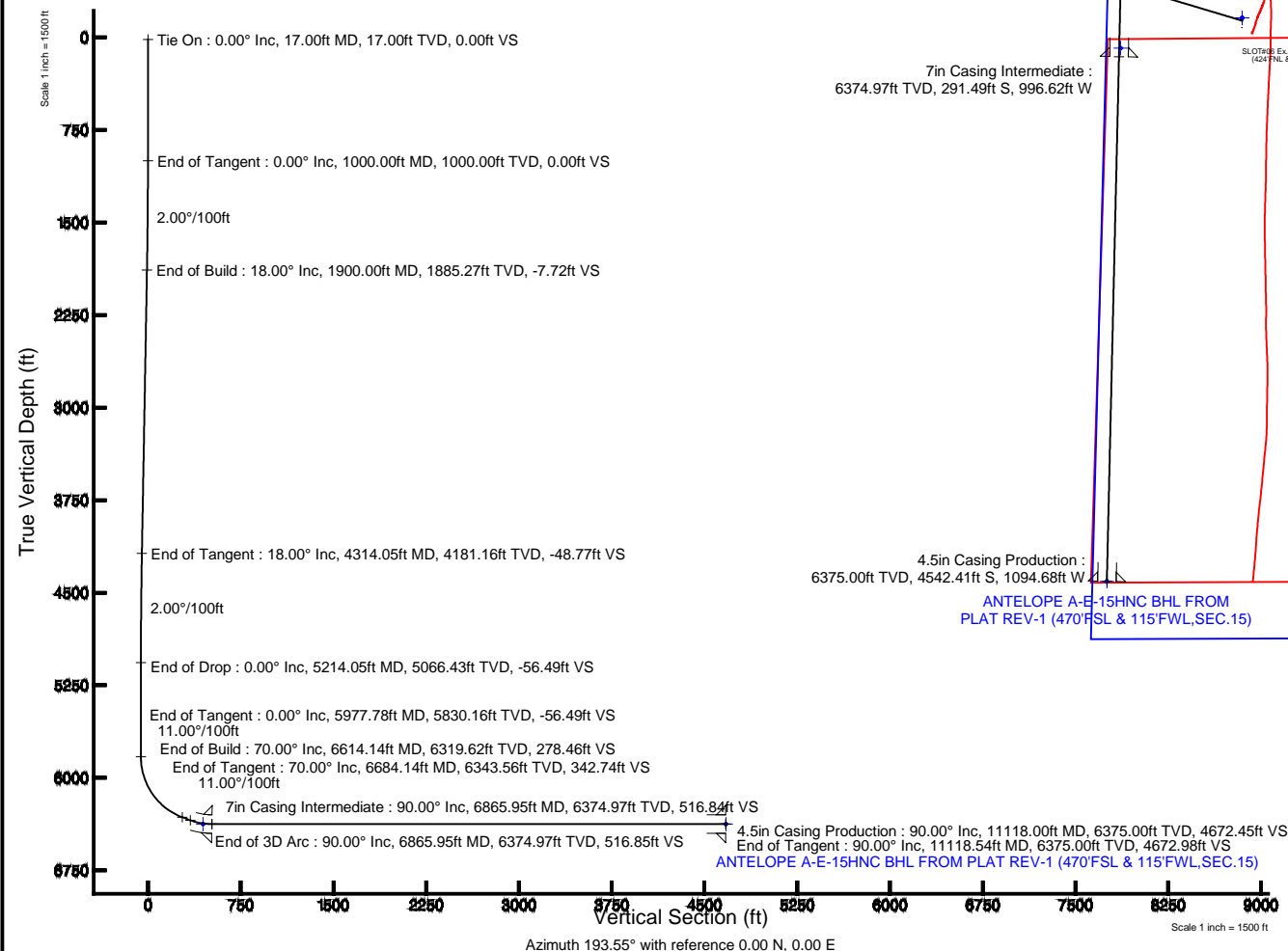


Location:	COLORADO	Slot:	SLOT#02 ANTELOPE A-E-15HNC (322'FNL & 1092'FWL,SEC.15)
Field:	WELD COUNTY	Well:	ANTELOPE A-E-15HNC
Facility:	SEC.15-T5N-R62W	Wellbore:	ANTELOPE A-E-15HNC PWB

Plot reference wellpath is ANTELOPE A-E-15HNC (REV-A.0) PWP	
True vertical depths are referenced to RIG (RKB)	Grid System: NAD83 / Lambert Colorado SP, Northern Zone (501), US feet
Measured depths are referenced to RIG (RKB)	North Reference: True north
RIG (RKB) to Mean Sea Level: 4715 feet	Scale: True distance
Mean Sea Level to Mud line (At Slot: SLOTH02 ANTELOPE A-E-15HNC (322FNL & 1092FWL,SEC.15): 0 feet	Depths are in feet
Coordinates are in feet referenced to Slot	Created by: guenaler on 6/16/2014

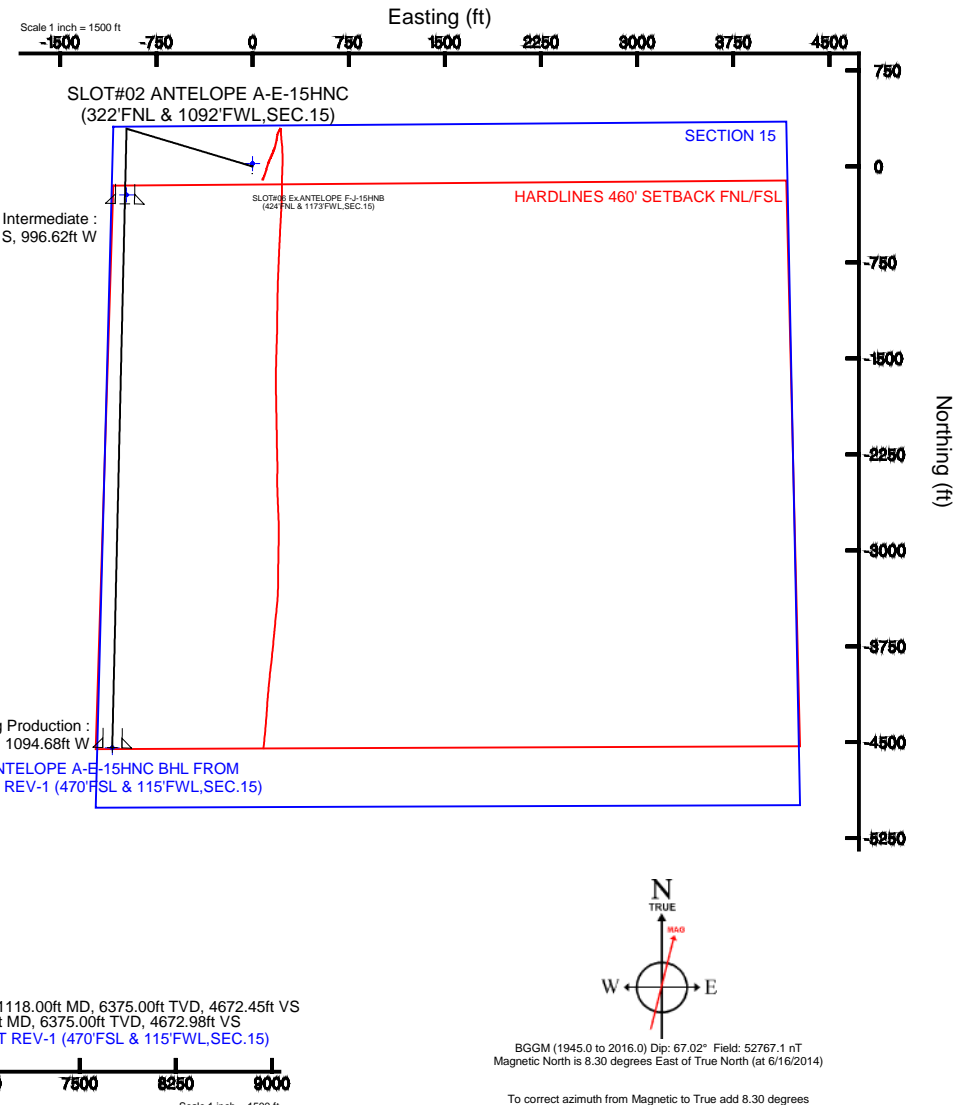
Facility Name			Grid East (US ft)	Grid North (US ft)	Latitude	Longitude
SEC.15-TSN-R62W			3330010.500	1393097.073	40°24'23.040"N	104°18'53.784"W
Slot	Local N (ft)	Local E (ft)	Grid East (US ft)	Grid North (US ft)	Latitude	Longitude
SLOT#02 ANTELOPE A-E-15HNC (322FNL & 1092FWL,SEC.15)	-21.86	0.00	3330010.793	1393075.217	40°24'22.824"N	104°18'53.784"W
RIG (RKB) to Mud line (At Slot: SLOT#02 ANTELOPE A-E-15HNC (322FNL & 1092FWL,SEC.15))					4715ft	
Mean Sea Level to Mud line (At Slot: SLOT#02 ANTELOPE A-E-15HNC (322FNL & 1092FWL,SEC.15))					0ft	
RIG (RKB) to Mean Sea Level					4715ft	



Design Comment	MD (ft)	Inc (")	Az (")	TVD (ft)	Local N (ft)	Local E (ft)	DLS (°/100ft)	VS (ft)
Tie On	17.00	0.000	286.703	17.00	0.00	0.00	0.00	0.00
End of Tangent	1000.00	0.000	286.703	1000.00	0.00	0.00	0.00	0.00
End of Build	1900.00	18.000	286.703	1885.27	40.30	-134.30	2.00	-7.72
End of Tangent	4314.05	18.000	286.703	4181.16	254.70	-848.80	0.00	-48.77
End of Drop	5214.05	0.000	181.321	5066.43	295.00	-983.10	2.00	-56.49
End of Tangent	5977.78	0.000	181.321	5830.16	295.00	-983.10	0.00	-56.49
End of Build	6614.14	70.000	181.321	6319.62	-47.63	-991.00	11.00	278.46
End of Tangent	6684.14	70.000	181.321	6343.56	-113.39	-992.52	0.00	342.74
End of 3D Arc	6865.95	90.000	181.321	6374.97	-291.49	-996.62	11.00	516.85
End of Tangent	11118.54	90.000	181.321	6335.00	-4542.95	-1094.69	0.00	4672.90

Start MD (ft)	End MD (ft)	Tool	Model	Log Name/Comment	Wellbore
17.00	11118.54	NaviTrak	NaviTrak (Standard)		ANTELOPE A-E-15HNC PWB

MD (ft)	Inc (°)	Az (°)	TVD (ft)	Local N (ft)	Local E (ft)	Grid East (US ft)	Grid North (US ft)	Latitude	Longitude
11118.54	90.00	181.321	6375.00	-4542.95	-1094.69	3328976.95	1388518.24	40°23'37.932"N	104°19'07.932"W





Planned Wellpath Report

ANTELOPE A-E-15HNC (REV-A.0) PWP

Page 1 of 7



REFERENCE WELLPATH IDENTIFICATION

Operator	BONANZA CREEK OIL COMPANY	Slot	SLOT#02 ANTELOPE A-E-15HNC (322'FNL & 1092'FWL,SEC.15)
Area	COLORADO	Well	ANTELOPE A-E-15HNC
Field	WELD COUNTY	Wellbore	ANTELOPE A-E-15HNC PWB
Facility	SEC.15-T5N-R62W		

REPORT SETUP INFORMATION

Projection System	NAD83 / Lambert Colorado SP, Northern Zone (501), US feet	Software System	WellArchitect® 4.0.0
North Reference	True	User	Guenaler
Scale	0.999961	Report Generated	6/16/2014 at 3:59:36 PM
Convergence at slot	n/a	Database/Source file	WA_Denver/ANTELOPE_A-E-15HNC_PWB.xml

WELLPATH LOCATION

	Local coordinates		Grid coordinates		Geographic coordinates	
	North[ft]	East[ft]	Easting[US ft]	Northing[US ft]	Latitude	Longitude
Slot Location	-21.86	0.00	3330010.79	1393075.22	40°24'22.824"N	104°18'53.784"W
Facility Reference Pt			3330010.50	1393097.07	40°24'23.040"N	104°18'53.784"W
Field Reference Pt			3327718.19	1377782.99	40°21'52.020"N	104°19'26.040"W

WELLPATH DATUM

Calculation method	Minimum curvature	RIG (RKB) to Facility Vertical Datum	4715.00ft
Horizontal Reference Pt	Slot	RIG (RKB) to Mean Sea Level	4715.00ft
Vertical Reference Pt	RIG (RKB)	RIG (RKB) to Mud Line at Slot (SLOT#02 ANTELOPE A-E-15HNC (322'FNL & 1092'FWL,SEC.15))	4715.00ft
MD Reference Pt	RIG (RKB)	Section Origin	N 0.00, E 0.00 ft
Field Vertical Reference	Mean Sea Level	Section Azimuth	193.55°



Planned Wellpath Report

ANTELOPE A-E-15HNC (REV-A.0) PWP

Page 2 of 7



REFERENCE WELLPATH IDENTIFICATION

Operator	BONANZA CREEK OIL COMPANY	Slot	SLOT#02 ANTELOPE A-E-15HNC (322'FNL & 1092'FWL,SEC.15)
Area	COLORADO	Well	ANTELOPE A-E-15HNC
Field	WELD COUNTY	Wellbore	ANTELOPE A-E-15HNC PWB
Facility	SEC.15-T5N-R62W		

WELLPATH DATA (122 stations) † = interpolated/extrapolated station

MD [ft]	Inclination [°]	Azimuth [°]	TVD [ft]	Vert Sect [ft]	North [ft]	East [ft]	Latitude	Longitude	DLS [°/100ft]	Comments
0.00†	0.000	286.703	0.00	0.00	0.00	0.00	40°24'22.824"N	104°18'53.784"W	0.00	
17.00	0.000	286.703	17.00	0.00	0.00	0.00	40°24'22.824"N	104°18'53.784"W	0.00	Tie On
117.00†	0.000	286.703	117.00	0.00	0.00	0.00	40°24'22.824"N	104°18'53.784"W	0.00	
217.00†	0.000	286.703	217.00	0.00	0.00	0.00	40°24'22.824"N	104°18'53.784"W	0.00	
317.00†	0.000	286.703	317.00	0.00	0.00	0.00	40°24'22.824"N	104°18'53.784"W	0.00	
417.00†	0.000	286.703	417.00	0.00	0.00	0.00	40°24'22.824"N	104°18'53.784"W	0.00	
517.00†	0.000	286.703	517.00	0.00	0.00	0.00	40°24'22.824"N	104°18'53.784"W	0.00	
617.00†	0.000	286.703	617.00	0.00	0.00	0.00	40°24'22.824"N	104°18'53.784"W	0.00	
717.00†	0.000	286.703	717.00	0.00	0.00	0.00	40°24'22.824"N	104°18'53.784"W	0.00	
817.00†	0.000	286.703	817.00	0.00	0.00	0.00	40°24'22.824"N	104°18'53.784"W	0.00	
917.00†	0.000	286.703	917.00	0.00	0.00	0.00	40°24'22.824"N	104°18'53.784"W	0.00	
1000.00	0.000	286.703	1000.00	0.00	0.00	0.00	40°24'22.824"N	104°18'53.784"W	0.00	End of Tangent
1017.00†	0.340	286.703	1017.00	0.00	0.01	-0.05	40°24'22.824"N	104°18'53.785"W	2.00	
1117.00†	2.340	286.703	1116.97	-0.13	0.69	-2.29	40°24'22.831"N	104°18'53.814"W	2.00	
1217.00†	4.340	286.703	1216.79	-0.45	2.36	-7.87	40°24'22.847"N	104°18'53.886"W	2.00	
1317.00†	6.340	286.703	1316.35	-0.96	5.04	-16.78	40°24'22.874"N	104°18'54.001"W	2.00	
1417.00†	8.340	286.703	1415.53	-1.67	8.71	-29.02	40°24'22.910"N	104°18'54.159"W	2.00	
1517.00†	10.340	286.703	1514.20	-2.56	13.37	-44.56	40°24'22.956"N	104°18'54.360"W	2.00	
1617.00†	12.340	286.703	1612.24	-3.64	19.02	-63.39	40°24'23.012"N	104°18'54.603"W	2.00	
1717.00†	14.340	286.703	1709.54	-4.91	25.65	-85.49	40°24'23.077"N	104°18'54.889"W	2.00	
1817.00†	16.340	286.703	1805.97	-6.37	33.26	-110.83	40°24'23.153"N	104°18'55.217"W	2.00	
1900.00	18.000	286.703	1885.27	-7.72	40.30	-134.30	40°24'23.222"N	104°18'55.520"W	2.00	End of Build
1917.00†	18.000	286.703	1901.44	-8.01	41.81	-139.33	40°24'23.237"N	104°18'55.585"W	0.00	
2017.00†	18.000	286.703	1996.54	-9.71	50.69	-168.93	40°24'23.325"N	104°18'55.968"W	0.00	
2117.00†	18.000	286.703	2091.65	-11.41	59.57	-198.52	40°24'23.413"N	104°18'56.350"W	0.00	
2217.00†	18.000	286.703	2186.75	-13.11	68.45	-228.12	40°24'23.500"N	104°18'56.733"W	0.00	
2317.00†	18.000	286.703	2281.86	-14.81	77.33	-257.72	40°24'23.588"N	104°18'57.115"W	0.00	
2417.00†	18.000	286.703	2376.96	-16.51	86.22	-287.32	40°24'23.676"N	104°18'57.498"W	0.00	
2517.00†	18.000	286.703	2472.07	-18.21	95.10	-316.92	40°24'23.764"N	104°18'57.881"W	0.00	
2617.00†	18.000	286.703	2567.18	-19.91	103.98	-346.51	40°24'23.851"N	104°18'58.263"W	0.00	



Planned Wellpath Report

ANTELOPE A-E-15HNC (REV-A.0) PWP

Page 3 of 7



REFERENCE WELLPATH IDENTIFICATION

Operator	BONANZA CREEK OIL COMPANY	Slot	SLOT#02 ANTELOPE A-E-15HNC (322'FNL & 1092'FWL,SEC.15)
Area	COLORADO	Well	ANTELOPE A-E-15HNC
Field	WELD COUNTY	Wellbore	ANTELOPE A-E-15HNC PWB
Facility	SEC.15-T5N-R62W		

WELLPATH DATA (122 stations) † = interpolated/extrapolated station

MD [ft]	Inclination [°]	Azimuth [°]	TVD [ft]	Vert Sect [ft]	North [ft]	East [ft]	Latitude	Longitude	DLS [°/100ft]	Comments
2717.00†	18.000	286.703	2662.28	-21.61	112.86	-376.11	40°24'23.939"N	104°18'58.646"W	0.00	
2817.00†	18.000	286.703	2757.39	-23.31	121.74	-405.71	40°24'24.027"N	104°18'59.028"W	0.00	
2917.00†	18.000	286.703	2852.49	-25.01	130.62	-435.31	40°24'24.115"N	104°18'59.411"W	0.00	
3017.00†	18.000	286.703	2947.60	-26.71	139.50	-464.91	40°24'24.202"N	104°18'59.794"W	0.00	
3117.00†	18.000	286.703	3042.70	-28.42	148.39	-494.50	40°24'24.290"N	104°19'00.176"W	0.00	
3217.00†	18.000	286.703	3137.81	-30.12	157.27	-524.10	40°24'24.378"N	104°19'00.559"W	0.00	
3317.00†	18.000	286.703	3232.92	-31.82	166.15	-553.70	40°24'24.466"N	104°19'00.941"W	0.00	
3417.00†	18.000	286.703	3328.02	-33.52	175.03	-583.30	40°24'24.554"N	104°19'01.324"W	0.00	
3517.00†	18.000	286.703	3423.13	-35.22	183.91	-612.89	40°24'24.641"N	104°19'01.707"W	0.00	
3617.00†	18.000	286.703	3518.23	-36.92	192.79	-642.49	40°24'24.729"N	104°19'02.089"W	0.00	
3717.00†	18.000	286.703	3613.34	-38.62	201.67	-672.09	40°24'24.817"N	104°19'02.472"W	0.00	
3817.00†	18.000	286.703	3708.44	-40.32	210.56	-701.69	40°24'24.905"N	104°19'02.855"W	0.00	
3917.00†	18.000	286.703	3803.55	-42.02	219.44	-731.29	40°24'24.992"N	104°19'03.237"W	0.00	
4017.00†	18.000	286.703	3898.66	-43.72	228.32	-760.88	40°24'25.080"N	104°19'03.620"W	0.00	
4117.00†	18.000	286.703	3993.76	-45.42	237.20	-790.48	40°24'25.168"N	104°19'04.002"W	0.00	
4217.00†	18.000	286.703	4088.87	-47.12	246.08	-820.08	40°24'25.256"N	104°19'04.385"W	0.00	
4314.05	18.000	286.703	4181.16	-48.77	254.70	-848.80	40°24'25.341"N	104°19'04.756"W	0.00	End of Tangent
4317.00†	17.941	286.703	4183.97	-48.82	254.96	-849.68	40°24'25.343"N	104°19'04.768"W	2.00	
4417.00†	15.941	286.703	4279.63	-50.43	263.34	-877.58	40°24'25.426"N	104°19'05.128"W	2.00	
4517.00†	13.941	286.703	4376.24	-51.85	270.75	-902.28	40°24'25.499"N	104°19'05.447"W	2.00	
4617.00†	11.941	286.703	4473.70	-53.08	277.18	-923.73	40°24'25.563"N	104°19'05.725"W	2.00	
4717.00†	9.941	286.703	4571.88	-54.12	282.64	-941.90	40°24'25.617"N	104°19'05.960"W	2.00	
4817.00†	7.941	286.703	4670.66	-54.98	287.10	-956.79	40°24'25.661"N	104°19'06.152"W	2.00	
4917.00†	5.941	286.703	4769.92	-55.64	290.58	-968.36	40°24'25.695"N	104°19'06.302"W	2.00	
5017.00†	3.941	286.703	4869.54	-56.12	293.05	-976.61	40°24'25.720"N	104°19'06.408"W	2.00	
5117.00†	1.941	286.703	4969.40	-56.40	294.53	-981.53	40°24'25.734"N	104°19'06.472"W	2.00	
5214.05	0.000	181.321	5066.43	-56.49	295.00	-983.10	40°24'25.739"N	104°19'06.492"W	2.00	End of Drop
5217.00†	0.000	181.321	5069.39	-56.49	295.00	-983.10	40°24'25.739"N	104°19'06.492"W	0.00	
5317.00†	0.000	181.321	5169.39	-56.49	295.00	-983.10	40°24'25.739"N	104°19'06.492"W	0.00	
5417.00†	0.000	181.321	5269.39	-56.49	295.00	-983.10	40°24'25.739"N	104°19'06.492"W	0.00	



Planned Wellpath Report

ANTELOPE A-E-15HNC (REV-A.0) PWP

Page 4 of 7



REFERENCE WELLPATH IDENTIFICATION

Operator	BONANZA CREEK OIL COMPANY	Slot	SLOT#02 ANTELOPE A-E-15HNC (322'FNL & 1092'FWL,SEC.15)
Area	COLORADO	Well	ANTELOPE A-E-15HNC
Field	WELD COUNTY	Wellbore	ANTELOPE A-E-15HNC PWB
Facility	SEC.15-T5N-R62W		

WELLPATH DATA (122 stations) † = interpolated/extrapolated station

MD [ft]	Inclination [°]	Azimuth [°]	TVD [ft]	Vert Sect [ft]	North [ft]	East [ft]	Latitude	Longitude	DLS [°/100ft]	Comments
5517.00†	0.000	181.321	5369.39	-56.49	295.00	-983.10	40°24'25.739"N	104°19'06.492"W	0.00	
5617.00†	0.000	181.321	5469.39	-56.49	295.00	-983.10	40°24'25.739"N	104°19'06.492"W	0.00	
5717.00†	0.000	181.321	5569.39	-56.49	295.00	-983.10	40°24'25.739"N	104°19'06.492"W	0.00	
5817.00†	0.000	181.321	5669.39	-56.49	295.00	-983.10	40°24'25.739"N	104°19'06.492"W	0.00	
5917.00†	0.000	181.321	5769.39	-56.49	295.00	-983.10	40°24'25.739"N	104°19'06.492"W	0.00	
5977.78	0.000	181.321	5830.16	-56.49	295.00	-983.10	40°24'25.739"N	104°19'06.492"W	0.00	End of Tangent
6017.00†	4.315	181.321	5869.35	-55.05	293.52	-983.13	40°24'25.724"N	104°19'06.493"W	11.00	
6117.00†	15.315	181.321	5967.73	-38.41	276.51	-983.53	40°24'25.556"N	104°19'06.498"W	11.00	
6217.00†	26.315	181.321	6061.06	-3.74	241.04	-984.34	40°24'25.206"N	104°19'06.508"W	11.00	
6317.00†	37.315	181.321	6145.91	47.70	188.42	-985.56	40°24'24.686"N	104°19'06.524"W	11.00	
6417.00†	48.315	181.321	6219.15	114.02	120.58	-987.12	40°24'24.015"N	104°19'06.544"W	11.00	
6517.00†	59.315	181.321	6278.10	192.78	40.01	-988.98	40°24'23.219"N	104°19'06.568"W	11.00	
6614.14	70.000	181.321	6319.62	278.46	-47.63	-991.00	40°24'22.353"N	104°19'06.594"W	11.00	End of Build
6617.00†	70.000	181.321	6320.60	281.08	-50.32	-991.06	40°24'22.327"N	104°19'06.595"W	0.00	
6684.14	70.000	181.321	6343.56	342.74	-113.39	-992.52	40°24'21.703"N	104°19'06.614"W	0.00	End of Tangent
6717.00†	73.615	181.321	6353.82	373.25	-144.60	-993.24	40°24'21.395"N	104°19'06.623"W	11.00	
6817.00†	84.615	181.321	6372.67	469.07	-242.62	-995.50	40°24'20.426"N	104°19'06.652"W	11.00	
6865.95	90.000	181.321	6374.97	516.85	-291.49	-996.62	40°24'19.943"N	104°19'06.667"W	11.00	End of 3D Arc
6917.00†	90.000	181.321	6374.97	566.74	-342.52	-997.80	40°24'19.439"N	104°19'06.682"W	0.00	
7017.00†	90.000	181.321	6374.97	664.47	-442.50	-1000.11	40°24'18.451"N	104°19'06.712"W	0.00	
7117.00†	90.000	181.321	6374.97	762.20	-542.47	-1002.41	40°24'17.463"N	104°19'06.742"W	0.00	
7217.00†	90.000	181.321	6374.98	859.93	-642.44	-1004.72	40°24'16.475"N	104°19'06.771"W	0.00	
7317.00†	90.000	181.321	6374.98	957.66	-742.42	-1007.03	40°24'15.488"N	104°19'06.801"W	0.00	
7417.00†	90.000	181.321	6374.98	1055.39	-842.39	-1009.33	40°24'14.500"N	104°19'06.831"W	0.00	
7517.00†	90.000	181.321	6374.98	1153.13	-942.36	-1011.64	40°24'13.512"N	104°19'06.861"W	0.00	
7617.00†	90.000	181.321	6374.98	1250.86	-1042.34	-1013.94	40°24'12.524"N	104°19'06.890"W	0.00	
7717.00†	90.000	181.321	6374.98	1348.59	-1142.31	-1016.25	40°24'11.536"N	104°19'06.920"W	0.00	
7817.00†	90.000	181.321	6374.98	1446.32	-1242.28	-1018.56	40°24'10.548"N	104°19'06.950"W	0.00	
7917.00†	90.000	181.321	6374.98	1544.05	-1342.26	-1020.86	40°24'09.560"N	104°19'06.980"W	0.00	
8017.00†	90.000	181.321	6374.98	1641.79	-1442.23	-1023.17	40°24'08.572"N	104°19'07.009"W	0.00	



Planned Wellpath Report

ANTELOPE A-E-15HNC (REV-A.0) PWP

Page 5 of 7



REFERENCE WELLPATH IDENTIFICATION			
Operator	BONANZA CREEK OIL COMPANY	Slot	SLOT#02 ANTELOPE A-E-15HNC (322'FNL & 1092'FWL,SEC.15)
Area	COLORADO	Well	ANTELOPE A-E-15HNC
Field	WELD COUNTY	Wellbore	ANTELOPE A-E-15HNC PWB
Facility	SEC.15-T5N-R62W		

WELLPATH DATA (122 stations) † = interpolated/extrapolated station										
MD [ft]	Inclination [°]	Azimuth [°]	TVD [ft]	Vert Sect [ft]	North [ft]	East [ft]	Latitude	Longitude	DLS [°/100ft]	Comments
8117.00†	90.000	181.321	6374.98	1739.52	-1542.20	-1025.47	40°24'07.584"N	104°19'07.039"W	0.00	
8217.00†	90.000	181.321	6374.98	1837.25	-1642.18	-1027.78	40°24'06.596"N	104°19'07.069"W	0.00	
8317.00†	90.000	181.321	6374.98	1934.98	-1742.15	-1030.09	40°24'05.609"N	104°19'07.099"W	0.00	
8417.00†	90.000	181.321	6374.98	2032.71	-1842.12	-1032.39	40°24'04.621"N	104°19'07.128"W	0.00	
8517.00†	90.000	181.321	6374.98	2130.44	-1942.10	-1034.70	40°24'03.633"N	104°19'07.158"W	0.00	
8617.00†	90.000	181.321	6374.98	2228.18	-2042.07	-1037.00	40°24'02.645"N	104°19'07.188"W	0.00	
8717.00†	90.000	181.321	6374.98	2325.91	-2142.04	-1039.31	40°24'01.657"N	104°19'07.218"W	0.00	
8817.00†	90.000	181.321	6374.99	2423.64	-2242.02	-1041.62	40°24'00.669"N	104°19'07.247"W	0.00	
8917.00†	90.000	181.321	6374.99	2521.37	-2341.99	-1043.92	40°23'59.681"N	104°19'07.277"W	0.00	
9017.00†	90.000	181.321	6374.99	2619.10	-2441.96	-1046.23	40°23'58.693"N	104°19'07.307"W	0.00	
9117.00†	90.000	181.321	6374.99	2716.83	-2541.94	-1048.53	40°23'57.705"N	104°19'07.337"W	0.00	
9217.00†	90.000	181.321	6374.99	2814.57	-2641.91	-1050.84	40°23'56.717"N	104°19'07.366"W	0.00	
9317.00†	90.000	181.321	6374.99	2912.30	-2741.88	-1053.15	40°23'55.729"N	104°19'07.396"W	0.00	
9417.00†	90.000	181.321	6374.99	3010.03	-2841.86	-1055.45	40°23'54.742"N	104°19'07.426"W	0.00	
9517.00†	90.000	181.321	6374.99	3107.76	-2941.83	-1057.76	40°23'53.754"N	104°19'07.456"W	0.00	
9617.00†	90.000	181.321	6374.99	3205.49	-3041.80	-1060.06	40°23'52.766"N	104°19'07.485"W	0.00	
9717.00†	90.000	181.321	6374.99	3303.23	-3141.78	-1062.37	40°23'51.778"N	104°19'07.515"W	0.00	
9817.00†	90.000	181.321	6374.99	3400.96	-3241.75	-1064.68	40°23'50.790"N	104°19'07.545"W	0.00	
9917.00†	90.000	181.321	6374.99	3498.69	-3341.72	-1066.98	40°23'49.802"N	104°19'07.575"W	0.00	
10017.00†	90.000	181.321	6374.99	3596.42	-3441.70	-1069.29	40°23'48.814"N	104°19'07.604"W	0.00	
10117.00†	90.000	181.321	6374.99	3694.15	-3541.67	-1071.59	40°23'47.826"N	104°19'07.634"W	0.00	
10217.00†	90.000	181.321	6374.99	3791.88	-3641.64	-1073.90	40°23'46.838"N	104°19'07.664"W	0.00	
10317.00†	90.000	181.321	6374.99	3889.62	-3741.62	-1076.21	40°23'45.850"N	104°19'07.694"W	0.00	
10417.00†	90.000	181.321	6375.00	3987.35	-3841.59	-1078.51	40°23'44.863"N	104°19'07.723"W	0.00	
10517.00†	90.000	181.321	6375.00	4085.08	-3941.56	-1080.82	40°23'43.875"N	104°19'07.753"W	0.00	
10617.00†	90.000	181.321	6375.00	4182.81	-4041.54	-1083.12	40°23'42.887"N	104°19'07.783"W	0.00	
10717.00†	90.000	181.321	6375.00	4280.54	-4141.51	-1085.43	40°23'41.899"N	104°19'07.813"W	0.00	
10817.00†	90.000	181.321	6375.00	4378.27	-4241.49	-1087.74	40°23'40.911"N	104°19'07.842"W	0.00	
10917.00†	90.000	181.321	6375.00	4476.01	-4341.46	-1090.04	40°23'39.923"N	104°19'07.872"W	0.00	
11017.00†	90.000	181.321	6375.00	4573.74	-4441.43	-1092.35	40°23'38.935"N	104°19'07.902"W	0.00	



Planned Wellpath Report

ANTELOPE A-E-15HNC (REV-A.0) PWP

Page 6 of 7



REFERENCE WELLPATH IDENTIFICATION

Operator	BONANZA CREEK OIL COMPANY	Slot	SLOT#02 ANTELOPE A-E-15HNC (322'FNL & 1092'FWL,SEC.15)
Area	COLORADO	Well	ANTELOPE A-E-15HNC
Field	WELD COUNTY	Wellbore	ANTELOPE A-E-15HNC PWB
Facility	SEC.15-T5N-R62W		

WELLPATH DATA (122 stations) † = interpolated/extrapolated station

MD [ft]	Inclination [°]	Azimuth [°]	TVD [ft]	Vert Sect [ft]	North [ft]	East [ft]	Latitude	Longitude	DLS [°/100ft]	Comments
11117.00†	90.000	181.321	6375.00	4671.47	-4541.41	-1094.65	40°23'37.947"N	104°19'07.932"W	0.00	
11118.54	90.000	181.321	6375.00 ¹	4672.98	-4542.95	-1094.69	40°23'37.932"N	104°19'07.932"W	0.00	End of Tangent

HOLE & CASING SECTIONS - Ref Wellbore: ANTELOPE A-E-15HNC PWB Ref Wellpath: ANTELOPE A-E-15HNC (REV-A.0) PWP

String/Diameter	Start MD [ft]	End MD [ft]	Interval [ft]	Start TVD [ft]	End TVD [ft]	Start N/S [ft]	Start E/W [ft]	End N/S [ft]	End E/W [ft]
7in Casing Intermediate	17.00	6865.95	6848.95	17.00	6374.97	0.00	0.00	-291.49	-996.62
4.5in Casing Production	17.00	11118.00	11101.00	17.00	6375.00	0.00	0.00	-4542.41	-1094.68

TARGETS

Name	MD [ft]	TVD [ft]	North [ft]	East [ft]	Grid East [US ft]	Grid North [US ft]	Latitude	Longitude	Shape
ANTELOPE A-E-15HNB SECTION 15		0.00	21.86	0.00	3330010.50	1393097.07	40°24'23.040"N	104°18'53.784"W	polygon
ANTELOPE A-E-15HNB HARDLINES 460' SETBACK FNL/FSL		6303.00	21.86	0.00	3330010.50	1393097.07	40°24'23.040"N	104°18'53.784"W	polygon
1) ANTELOPE A-E-15HNC BHL FROM PLAT REV-1 (470'FSL & 115'FWL,SEC.15)	11118.54	6375.00	-4542.95	-1094.69	3328976.95	1388518.24	40°23'37.932"N	104°19'07.932"W	point
ANTELOPE A-E-15HNC TARGET		6375.00	-222.21	-983.10	3329030.79	1392839.90	40°24'20.628"N	104°19'06.492"W	point

SURVEY PROGRAM - Ref Wellbore: ANTELOPE A-E-15HNC PWB Ref Wellpath: ANTELOPE A-E-15HNC (REV-A.0) PWP

Start MD [ft]	End MD [ft]	Positional Uncertainty Model	Log Name/Comment	Wellbore
17.00	11118.54	NaviTrak (Standard)		ANTELOPE A-E-15HNC PWB



Planned Wellpath Report
ANTELOPE A-E-15HNC (REV-A.0) PWP
Page 7 of 7



REFERENCE WELLPATH IDENTIFICATION			
Operator	BONANZA CREEK OIL COMPANY	Slot	SLOT#02 ANTELOPE A-E-15HNC (322'FNL & 1092'FWL,SEC.15)
Area	COLORADO	Well	ANTELOPE A-E-15HNC
Field	WELD COUNTY	Wellbore	ANTELOPE A-E-15HNC PWB
Facility	SEC.15-T5N-R62W		

DESIGN COMMENTS				
MD [ft]	Inclination [°]	Azimuth [°]	TVD [ft]	Comment
17.00	0.000	286.703	17.00	Tie On
1000.00	0.000	286.703	1000.00	End of Tangent
1900.00	18.000	286.703	1885.27	End of Build
4314.05	18.000	286.703	4181.16	End of Tangent
5214.05	0.000	181.321	5066.43	End of Drop
5977.78	0.000	181.321	5830.16	End of Tangent
6614.14	70.000	181.321	6319.62	End of Build
6684.14	70.000	181.321	6343.56	End of Tangent
6865.95	90.000	181.321	6374.97	End of 3D Arc
11118.54	90.000	181.321	6375.00	End of Tangent