

18 January 2014

Colorado Oil and Gas Conservation
Commission
The Chancery Building
1120 Lincoln Street, Suite 801
Denver, CO 80203



410 17th Street, Suite 1400
Denver, CO 80202
(720) 440-6100 phone
(720) 305-0804 fax

Bonanzacrk.com

Attn: Matthew Lepore, Director

Re: Notice of 318A.a(4).D Well Proposal
Antelope 11-14-15HNB
SHL: NWNW (382' FNL, 1093' FWL) Sec 15-5N-62W, 6TH PM
Top of Production: NWNW (631' FNL, 660' FWL) Sec 15-5N-62W, 6TH PM
Bottom of Production: SWSW (470' FSL, 660' FWL) Sec 15-5N-62W, 6TH PM
Weld County, Colorado

Mr. Director:

Bonanza Creek Energy, Inc. (Bonanza) intends to permit, drill and operate the referenced Niobrara Horizontal Well. As defined by Colorado Oil and Gas Conservation Commission (COGCC) Rule 318A.a.(4)D., Bonanza proposes the following wellbore spacing unit:

W/2W/2 Section 15-T5N-R62W, 6TH PM, Weld County, CO – 160 Acres

Bonanza is the sole mineral lease holder in the proposed spacing unit, and no mineral owner notifications were required.

Bonanza respectfully requests that you review the enclosed wellbore spacing unit documentation and approve the referenced APD.

Please do not hesitate to call or email me, directly, at (720) 440-6112 or KCaplan@BonanzaCRK.com, should you have any questions pertaining to this matter.

Thank you for your cooperation.

Sincerely,

BONANZA CREEK ENERGY, INC.
BONANZA CREEK ENERGY OPERATING COMPANY, LLC.

Keith S. Caplan
Sr. Regulatory Specialist

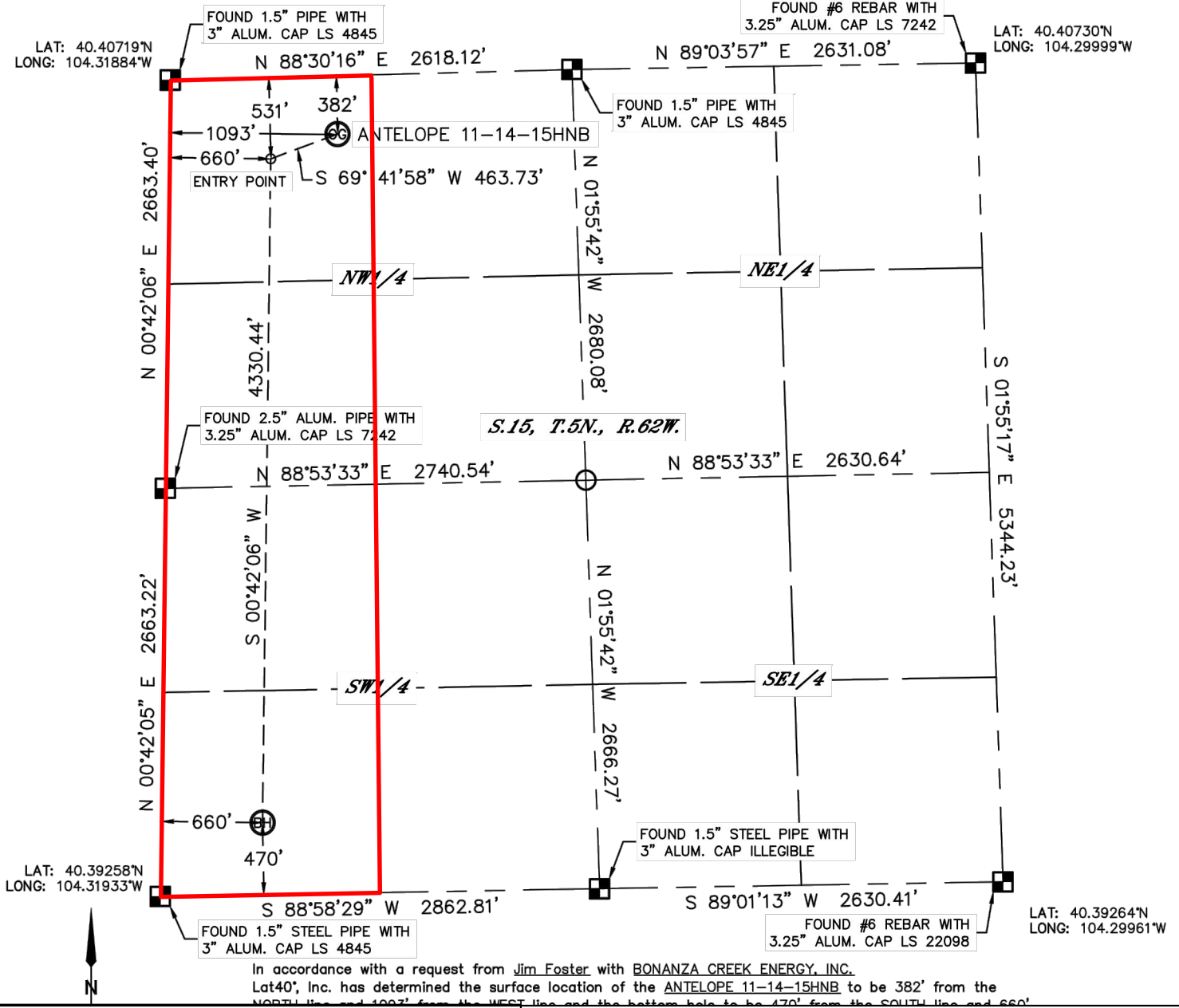


Lat40°, Inc. 1635 Foxtrail Drive, Suite 325 Loveland, CO 970-776-3321

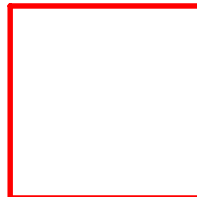
WELL LOCATION CERTIFICATE

THIS MAP DOES NOT REPRESENT A BOUNDARY SURVEY

SECTION: 15
TOWNSHIP: 5N
RANGE: 62W



In accordance with a request from Jim Foster with BONANZA CREEK ENERGY, INC., Lat40°, Inc. has determined the surface location of the ANTELOPE 11-14-15HNB to be 382' from the NORTH line and 1093' from the WEST line and the bottom hole to be 470' from the SOUTH line and 660' from the EAST line.



Wellbore Spacing Unit Outline

Wellbore Spacing Unit Map

18 June 2014 ksc

Antelope 11-14-15HNB
W/2W/2 Sec 15-T5N-R62W 6th PM
Weld County, Colorado