

Location:	COLORADO	Slot:	SLOT#05 ANTELOPE 11-14-15HNB (382'FNL & 1093'FWL,SEC.13)
Field:	WELD COUNTY	Well:	ANTELOPE 11-14-15HNB
Facility:	SEC.15-T5N-R62W	Wellbore:	ANTELOPE 11-14-15HNB PWB

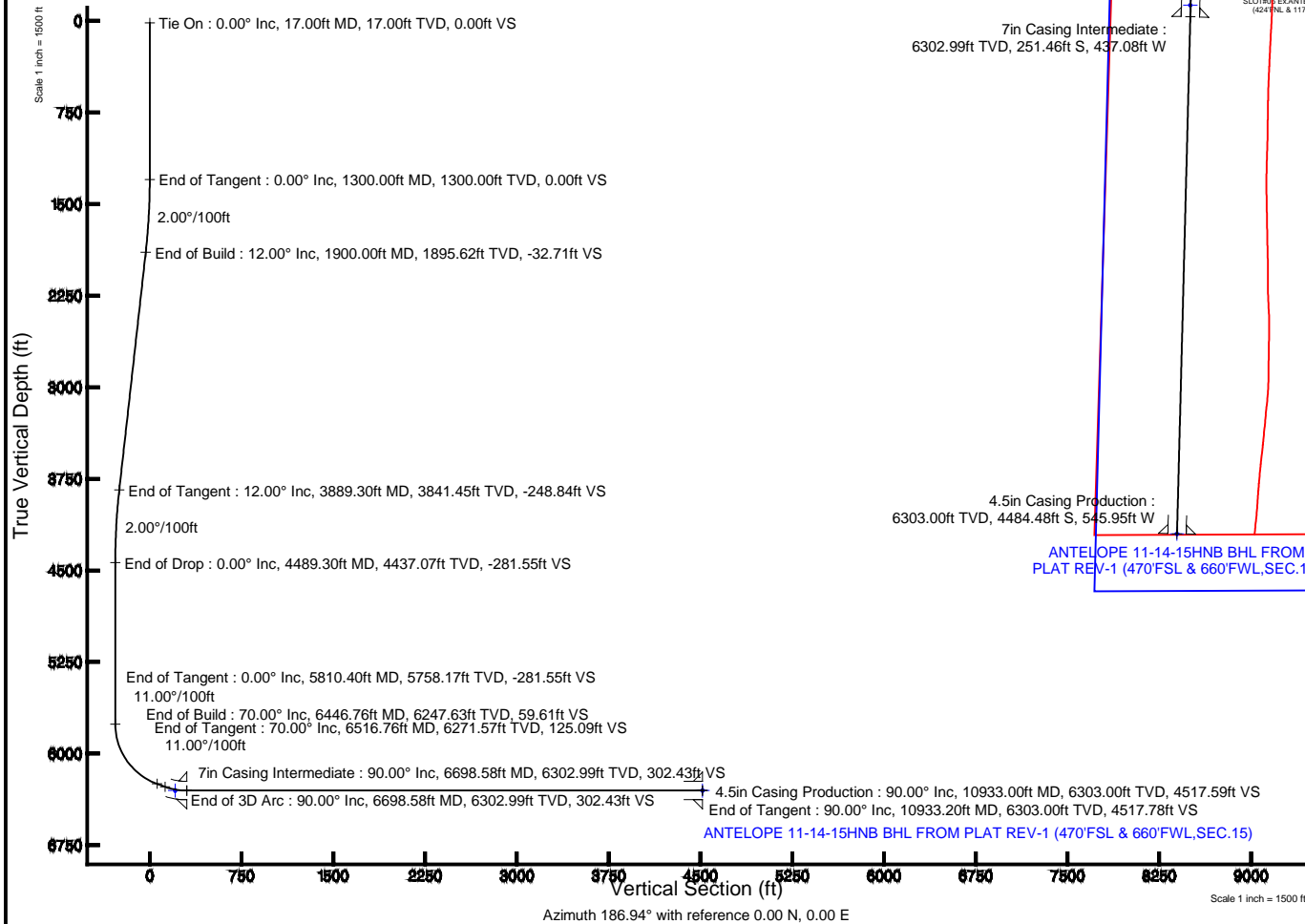
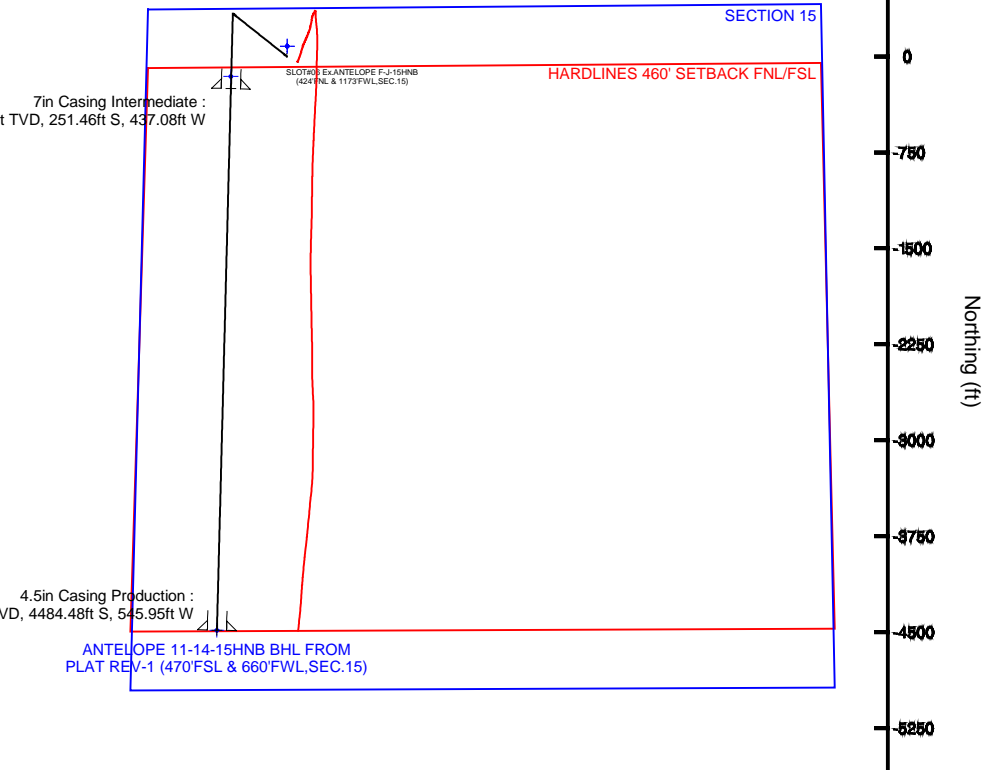
Plot reference wellpath is ANTELOPE 11-14-15HNB (REV-A.0) PWP	
True vertical depths are referenced to RIG (RKB)	Grid System: NAD83 / Lambert Colorado SP, Northern Zone (501), US feet
Measured depths are referenced to RIG (RKB)	North Reference: True north
RIG (RKB) to Mean Sea Level: 4715 feet	Scale: True distance
Mean Sea Level to Mud line (At Slot: SLOT#05 ANTELOPE 11-14-15HNB (382°FNL & 1093°FWL, SEC.13)): 0 feet	Depths are in feet
Coordinates are in feet referenced to Slot	Created by: guenaler on 6/16/2014

Facility Name				Grid East (US It)	Grid North (US It)	Latitude	Longitude
SEC.15-T5N-R62W				3330010.500	1393097.073	40°24'23.040"N	104°18'53.784"W
Slot	Local N (It)	Local E (It)	Grid East (US It)	Grid North (US It)	Latitude	Longitude	
SLOT#05 ANTELOPE 11-14-15HNB (382FWL & 1093FWL,SEC.13)	-80.15	-2.78	3330008.787	1393016.897	40°24'22.248"N	104°18'53.820"W	
RIG (RKB) to Mud line (At Slot: SLOT#05 ANTELOPE 11-14-15HNB (382FWL & 1093FWL,SEC.13))						4715ft	
Mean Sea Level to Mud line (At Slot: SLOT#05 ANTELOPE 11-14-15HNB (382FWL & 1093FWL,SEC.13))						0ft	
RIG (RKB) to Mean Sea Level						4715ft	

Well Profile Data								
Design Comment	MD (ft)	Inc (°)	Az (°)	TVD (ft)	Local N (ft)	Local E (ft)	DLS (°/100ft)	VS (ft)
Tie On	17.00	0.000	308.444	17.00	0.00	0.00	0.00	0.00
End of Tangent	1300.00	0.000	308.444	1300.00	0.00	0.00	0.00	0.00
End of Build	1900.00	12.000	308.444	1895.62	38.92	-49.03	2.00	-32.71
End of Tangent	3889.30	12.000	308.444	3841.45	296.08	-372.97	0.00	-248.84
End of Drop	4489.30	0.000	181.473	4437.07	335.00	-422.00	2.00	-281.55
End of Tangent	5810.40	0.000	181.473	5758.17	335.00	-422.00	0.00	-281.55
End of Build	6446.76	70.000	181.473	6247.63	-7.61	-430.81	11.00	59.61
End of Tangent	6516.76	0.000	181.473	6271.57	-73.37	-432.50	0.00	128.09
End of 3D Arc	6698.58	90.000	181.473	6302.99	-251.45	-437.08	11.00	302.43
End of Tangent	10933.20	0.000	181.473	6303.00	-4484.67	-545.95	0.00	4517.78

Start MD (ft)	End MD (ft)	Tool	Model	Log Name/Comment	Wellbore
17.00	10933.20	NaviTrak	NaviTrak (Standard)		ANTELOPE 11-14-15HNB PWB

MD (ft)	Inc (°)	Az (°)	TVD (ft)	Local N (ft)	Local E (ft)	Grid East (US ft)	Grid North (US ft)	Latitude	Longitude
10933.20	90.000	181.473	6303.00	-4484.67	-545.95	3329522.83	1388525.51	40°23'37.932"N	104°19'00.876"W



BGGM (1945.0 to 2016.0) Dip: 67.02° Field: 52767 nT  
Magnetic North is 8.30 degrees East of True North (at 6/16/2014)

To correct azimuth from Magnetic to True add 8.30 degrees



# Planned Wellpath Report

ANTELOPE 11-14-15HNB (REV-A.0) PWP

Page 1 of 7



REFERENCE WELLPATH IDENTIFICATION			
Operator	BONANZA CREEK OIL COMPANY	Slot	SLOT#05 ANTELOPE 11-14-15HNB (382'FNL & 1093'FWL,SEC.13)
Area	COLORADO	Well	ANTELOPE 11-14-15HNB
Field	WELD COUNTY	Wellbore	ANTELOPE 11-14-15HNB PWB
Facility	SEC.15-T5N-R62W		

REPORT SETUP INFORMATION			
Projection System	NAD83 / Lambert Colorado SP, Northern Zone (501), US feet	Software System	WellArchitect® 4.0.0
North Reference	True	User	Guenaler
Scale	0.999961	Report Generated	6/16/2014 at 4:33:28 PM
Convergence at slot	n/a	Database/Source file	WA_Denver/ANTELOPE_11-14-15HNB_PWB.xml

WELLPATH LOCATION						
	Local coordinates		Grid coordinates		Geographic coordinates	
	North[ft]	East[ft]	Easting[US ft]	Northing[US ft]	Latitude	Longitude
Slot Location	-80.15	-2.78	3330008.79	1393016.90	40°24'22.248"N	104°18'53.820"W
Facility Reference Pt			3330010.50	1393097.07	40°24'23.040"N	104°18'53.784"W
Field Reference Pt			3327718.19	1377782.99	40°21'52.020"N	104°19'26.040"W

WELLPATH DATUM			
Calculation method	Minimum curvature	RIG (RKB) to Facility Vertical Datum	4715.00ft
Horizontal Reference Pt	Slot	RIG (RKB) to Mean Sea Level	4715.00ft
Vertical Reference Pt	RIG (RKB)	RIG (RKB) to Mud Line at Slot (SLOT#05 ANTELOPE 11-14-15HNB (382'FNL & 1093'FWL,SEC.13))	4715.00ft
MD Reference Pt	RIG (RKB)	Section Origin	N 0.00, E 0.00 ft
Field Vertical Reference	Mean Sea Level	Section Azimuth	186.94°



# Planned Wellpath Report

## ANTELOPE 11-14-15HNB (REV-A.0) PWP

Page 2 of 7



### REFERENCE WELLPATH IDENTIFICATION

Operator	BONANZA CREEK OIL COMPANY	Slot	SLOT#05 ANTELOPE 11-14-15HNB (382'FNL & 1093'FWL,SEC.13)
Area	COLORADO	Well	ANTELOPE 11-14-15HNB
Field	WELD COUNTY	Wellbore	ANTELOPE 11-14-15HNB PWB
Facility	SEC.15-T5N-R62W		

### WELLPATH DATA (120 stations) † = interpolated/extrapolated station

MD [ft]	Inclination [°]	Azimuth [°]	TVD [ft]	Vert Sect [ft]	North [ft]	East [ft]	Latitude	Longitude	DLS [°/100ft]	Comments
0.00†	0.000	308.444	0.00	0.00	0.00	0.00	40°24'22.248"N	104°18'53.820"W	0.00	
17.00	0.000	308.444	17.00	0.00	0.00	0.00	40°24'22.248"N	104°18'53.820"W	0.00	Tie On
117.00†	0.000	308.444	117.00	0.00	0.00	0.00	40°24'22.248"N	104°18'53.820"W	0.00	
217.00†	0.000	308.444	217.00	0.00	0.00	0.00	40°24'22.248"N	104°18'53.820"W	0.00	
317.00†	0.000	308.444	317.00	0.00	0.00	0.00	40°24'22.248"N	104°18'53.820"W	0.00	
417.00†	0.000	308.444	417.00	0.00	0.00	0.00	40°24'22.248"N	104°18'53.820"W	0.00	
517.00†	0.000	308.444	517.00	0.00	0.00	0.00	40°24'22.248"N	104°18'53.820"W	0.00	
617.00†	0.000	308.444	617.00	0.00	0.00	0.00	40°24'22.248"N	104°18'53.820"W	0.00	
717.00†	0.000	308.444	717.00	0.00	0.00	0.00	40°24'22.248"N	104°18'53.820"W	0.00	
817.00†	0.000	308.444	817.00	0.00	0.00	0.00	40°24'22.248"N	104°18'53.820"W	0.00	
917.00†	0.000	308.444	917.00	0.00	0.00	0.00	40°24'22.248"N	104°18'53.820"W	0.00	
1017.00†	0.000	308.444	1017.00	0.00	0.00	0.00	40°24'22.248"N	104°18'53.820"W	0.00	
1117.00†	0.000	308.444	1117.00	0.00	0.00	0.00	40°24'22.248"N	104°18'53.820"W	0.00	
1217.00†	0.000	308.444	1217.00	0.00	0.00	0.00	40°24'22.248"N	104°18'53.820"W	0.00	
1300.00	0.000	308.444	1300.00	0.00	0.00	0.00	40°24'22.248"N	104°18'53.820"W	0.00	End of Tangent
1317.00†	0.340	308.444	1317.00	-0.03	0.03	-0.04	40°24'22.248"N	104°18'53.821"W	2.00	
1417.00†	2.340	308.444	1416.97	-1.25	1.49	-1.87	40°24'22.263"N	104°18'53.844"W	2.00	
1517.00†	4.340	308.444	1516.79	-4.29	5.11	-6.43	40°24'22.298"N	104°18'53.903"W	2.00	
1617.00†	6.340	308.444	1616.35	-9.16	10.89	-13.72	40°24'22.356"N	104°18'53.997"W	2.00	
1717.00†	8.340	308.444	1715.53	-15.83	18.84	-23.73	40°24'22.434"N	104°18'54.127"W	2.00	
1817.00†	10.340	308.444	1814.20	-24.31	28.93	-36.44	40°24'22.534"N	104°18'54.291"W	2.00	
1900.00	12.000	308.444	1895.62	-32.71	38.92	-49.03	40°24'22.633"N	104°18'54.454"W	2.00	End of Build
1917.00†	12.000	308.444	1912.25	-34.56	41.12	-51.80	40°24'22.654"N	104°18'54.490"W	0.00	
2017.00†	12.000	308.444	2010.07	-45.42	54.05	-68.08	40°24'22.782"N	104°18'54.700"W	0.00	
2117.00†	12.000	308.444	2107.88	-56.29	66.97	-84.37	40°24'22.910"N	104°18'54.911"W	0.00	
2217.00†	12.000	308.444	2205.70	-67.15	79.90	-100.65	40°24'23.038"N	104°18'55.121"W	0.00	
2317.00†	12.000	308.444	2303.51	-78.02	92.83	-116.94	40°24'23.165"N	104°18'55.332"W	0.00	
2417.00†	12.000	308.444	2401.33	-88.88	105.75	-133.22	40°24'23.293"N	104°18'55.542"W	0.00	
2517.00†	12.000	308.444	2499.14	-99.75	118.68	-149.50	40°24'23.421"N	104°18'55.753"W	0.00	
2617.00†	12.000	308.444	2596.95	-110.61	131.61	-165.79	40°24'23.549"N	104°18'55.963"W	0.00	



# Planned Wellpath Report

## ANTELOPE 11-14-15HNB (REV-A.0) PWP

Page 3 of 7



### REFERENCE WELLPATH IDENTIFICATION

Operator	BONANZA CREEK OIL COMPANY	Slot	SLOT#05 ANTELOPE 11-14-15HNB (382'FNL & 1093'FWL,SEC.13)
Area	COLORADO	Well	ANTELOPE 11-14-15HNB
Field	WELD COUNTY	Wellbore	ANTELOPE 11-14-15HNB PWB
Facility	SEC.15-T5N-R62W		

### WELLPATH DATA (120 stations) † = interpolated/extrapolated station

MD [ft]	Inclination [°]	Azimuth [°]	TVD [ft]	Vert Sect [ft]	North [ft]	East [ft]	Latitude	Longitude	DLS [°/100ft]	Comments
2717.00†	12.000	308.444	2694.77	-121.47	144.54	-182.07	40°24'23.676"N	104°18'56.174"W	0.00	
2817.00†	12.000	308.444	2792.58	-132.34	157.46	-198.36	40°24'23.804"N	104°18'56.384"W	0.00	
2917.00†	12.000	308.444	2890.40	-143.20	170.39	-214.64	40°24'23.932"N	104°18'56.595"W	0.00	
3017.00†	12.000	308.444	2988.21	-154.07	183.32	-230.92	40°24'24.059"N	104°18'56.805"W	0.00	
3117.00†	12.000	308.444	3086.03	-164.93	196.24	-247.21	40°24'24.187"N	104°18'57.016"W	0.00	
3217.00†	12.000	308.444	3183.84	-175.80	209.17	-263.49	40°24'24.315"N	104°18'57.226"W	0.00	
3317.00†	12.000	308.444	3281.66	-186.66	222.10	-279.78	40°24'24.443"N	104°18'57.437"W	0.00	
3417.00†	12.000	308.444	3379.47	-197.52	235.02	-296.06	40°24'24.570"N	104°18'57.647"W	0.00	
3517.00†	12.000	308.444	3477.29	-208.39	247.95	-312.34	40°24'24.698"N	104°18'57.858"W	0.00	
3617.00†	12.000	308.444	3575.10	-219.25	260.88	-328.63	40°24'24.826"N	104°18'58.068"W	0.00	
3717.00†	12.000	308.444	3672.92	-230.12	273.80	-344.91	40°24'24.954"N	104°18'58.279"W	0.00	
3817.00†	12.000	308.444	3770.73	-240.98	286.73	-361.20	40°24'25.081"N	104°18'58.489"W	0.00	
3889.30	12.000	308.444	3841.45	-248.84	296.08	-372.97	40°24'25.174"N	104°18'58.641"W	0.00	End of Tangent
3917.00†	11.446	308.444	3868.57	-251.78	299.58	-377.38	40°24'25.208"N	104°18'58.698"W	2.00	
4017.00†	9.446	308.444	3966.91	-261.25	310.85	-391.58	40°24'25.320"N	104°18'58.882"W	2.00	
4117.00†	7.446	308.444	4065.82	-268.93	319.98	-403.08	40°24'25.410"N	104°18'59.030"W	2.00	
4217.00†	5.446	308.444	4165.19	-274.79	326.96	-411.87	40°24'25.479"N	104°18'59.144"W	2.00	
4317.00†	3.446	308.444	4264.88	-278.84	331.78	-417.94	40°24'25.526"N	104°18'59.223"W	2.00	
4417.00†	1.446	308.444	4364.78	-281.07	334.43	-421.29	40°24'25.553"N	104°18'59.266"W	2.00	
4489.30	0.000	181.473	4437.07	-281.55	335.00	-422.00	40°24'25.558"N	104°18'59.275"W	2.00	End of Drop
4517.00†	0.000	181.473	4464.78	-281.55	335.00	-422.00	40°24'25.558"N	104°18'59.275"W	0.00	
4617.00†	0.000	181.473	4564.78	-281.55	335.00	-422.00	40°24'25.558"N	104°18'59.275"W	0.00	
4717.00†	0.000	181.473	4664.78	-281.55	335.00	-422.00	40°24'25.558"N	104°18'59.275"W	0.00	
4817.00†	0.000	181.473	4764.78	-281.55	335.00	-422.00	40°24'25.558"N	104°18'59.275"W	0.00	
4917.00†	0.000	181.473	4864.78	-281.55	335.00	-422.00	40°24'25.558"N	104°18'59.275"W	0.00	
5017.00†	0.000	181.473	4964.78	-281.55	335.00	-422.00	40°24'25.558"N	104°18'59.275"W	0.00	
5117.00†	0.000	181.473	5064.78	-281.55	335.00	-422.00	40°24'25.558"N	104°18'59.275"W	0.00	
5217.00†	0.000	181.473	5164.78	-281.55	335.00	-422.00	40°24'25.558"N	104°18'59.275"W	0.00	
5317.00†	0.000	181.473	5264.78	-281.55	335.00	-422.00	40°24'25.558"N	104°18'59.275"W	0.00	
5417.00†	0.000	181.473	5364.78	-281.55	335.00	-422.00	40°24'25.558"N	104°18'59.275"W	0.00	



# Planned Wellpath Report

## ANTELOPE 11-14-15HNB (REV-A.0) PWP

Page 4 of 7



### REFERENCE WELLPATH IDENTIFICATION

Operator	BONANZA CREEK OIL COMPANY	Slot	SLOT#05 ANTELOPE 11-14-15HNB (382'FNL & 1093'FWL,SEC.13)
Area	COLORADO	Well	ANTELOPE 11-14-15HNB
Field	WELD COUNTY	Wellbore	ANTELOPE 11-14-15HNB PWB
Facility	SEC.15-T5N-R62W		

### WELLPATH DATA (120 stations) † = interpolated/extrapolated station

MD [ft]	Inclination [°]	Azimuth [°]	TVD [ft]	Vert Sect [ft]	North [ft]	East [ft]	Latitude	Longitude	DLS [°/100ft]	Comments
5517.00†	0.000	181.473	5464.78	-281.55	335.00	-422.00	40°24'25.558"N	104°18'59.275"W	0.00	
5617.00†	0.000	181.473	5564.78	-281.55	335.00	-422.00	40°24'25.558"N	104°18'59.275"W	0.00	
5717.00†	0.000	181.473	5664.78	-281.55	335.00	-422.00	40°24'25.558"N	104°18'59.275"W	0.00	
5810.40	0.000	181.473	5758.17	-281.55	335.00	-422.00	40°24'25.558"N	104°18'59.275"W	0.00	End of Tangent
5817.00†	0.726	181.473	5764.78	-281.51	334.96	-422.00	40°24'25.558"N	104°18'59.275"W	11.00	
5917.00†	11.726	181.473	5864.03	-270.73	324.13	-422.28	40°24'25.451"N	104°18'59.279"W	11.00	
6017.00†	22.726	181.473	5959.40	-241.29	294.57	-423.04	40°24'25.159"N	104°18'59.289"W	11.00	
6117.00†	33.726	181.473	6047.37	-194.28	247.37	-424.25	40°24'24.692"N	104°18'59.304"W	11.00	
6217.00†	44.726	181.473	6124.72	-131.43	184.25	-425.88	40°24'24.069"N	104°18'59.325"W	11.00	
6317.00†	55.726	181.473	6188.60	-55.04	107.53	-427.85	40°24'23.311"N	104°18'59.351"W	11.00	
6417.00†	66.726	181.473	6236.66	32.08	20.04	-430.10	40°24'22.446"N	104°18'59.380"W	11.00	
6446.76	70.000	181.473	6247.63	59.61	-7.61	-430.81	40°24'22.173"N	104°18'59.389"W	11.00	End of Build
6516.76	70.000	181.473	6271.57	125.09	-73.37	-432.50	40°24'21.523"N	104°18'59.411"W	0.00	End of Tangent
6517.00†	70.026	181.473	6271.65	125.32	-73.59	-432.51	40°24'21.521"N	104°18'59.411"W	11.00	
6617.00†	81.026	181.473	6296.61	221.55	-170.24	-434.99	40°24'20.566"N	104°18'59.443"W	11.00	
6698.58	90.000	181.473	6302.99	302.43	-251.45	-437.08	40°24'19.763"N	104°18'59.470"W	11.00	End of 3D Arc
6717.00†	90.000	181.473	6302.99	320.77	-269.87	-437.55	40°24'19.581"N	104°18'59.476"W	0.00	
6817.00†	90.000	181.473	6302.99	420.31	-369.84	-440.13	40°24'18.593"N	104°18'59.509"W	0.00	
6917.00†	90.000	181.473	6302.99	519.86	-469.80	-442.70	40°24'17.606"N	104°18'59.542"W	0.00	
7017.00†	90.000	181.473	6302.99	619.40	-569.77	-445.27	40°24'16.618"N	104°18'59.576"W	0.00	
7117.00†	90.000	181.473	6302.99	718.95	-669.74	-447.84	40°24'15.630"N	104°18'59.609"W	0.00	
7217.00†	90.000	181.473	6302.99	818.49	-769.70	-450.41	40°24'14.642"N	104°18'59.642"W	0.00	
7317.00†	90.000	181.473	6302.99	918.04	-869.67	-452.98	40°24'13.654"N	104°18'59.675"W	0.00	
7417.00†	90.000	181.473	6302.99	1017.58	-969.64	-455.55	40°24'12.666"N	104°18'59.708"W	0.00	
7517.00†	90.000	181.473	6302.99	1117.13	-1069.61	-458.12	40°24'11.679"N	104°18'59.742"W	0.00	
7617.00†	90.000	181.473	6302.99	1216.67	-1169.57	-460.69	40°24'10.691"N	104°18'59.775"W	0.00	
7717.00†	90.000	181.473	6302.99	1316.22	-1269.54	-463.26	40°24'09.703"N	104°18'59.808"W	0.00	
7817.00†	90.000	181.473	6302.99	1415.76	-1369.51	-465.84	40°24'08.715"N	104°18'59.841"W	0.00	
7917.00†	90.000	181.473	6302.99	1515.31	-1469.47	-468.41	40°24'07.727"N	104°18'59.875"W	0.00	
8017.00†	90.000	181.473	6302.99	1614.85	-1569.44	-470.98	40°24'06.739"N	104°18'59.908"W	0.00	



# Planned Wellpath Report

## ANTELOPE 11-14-15HNB (REV-A.0) PWP

Page 5 of 7



### REFERENCE WELLPATH IDENTIFICATION

Operator	BONANZA CREEK OIL COMPANY	Slot	SLOT#05 ANTELOPE 11-14-15HNB (382'FNL & 1093'FWL,SEC.13)
Area	COLORADO	Well	ANTELOPE 11-14-15HNB
Field	WELD COUNTY	Wellbore	ANTELOPE 11-14-15HNB PWB
Facility	SEC.15-T5N-R62W		

### WELLPATH DATA (120 stations) † = interpolated/extrapolated station

MD [ft]	Inclination [°]	Azimuth [°]	TVD [ft]	Vert Sect [ft]	North [ft]	East [ft]	Latitude	Longitude	DLS [°/100ft]	Comments
8117.00†	90.000	181.473	6302.99	1714.40	-1669.41	-473.55	40°24'05.751"N	104°18'59.941"W	0.00	
8217.00†	90.000	181.473	6302.99	1813.94	-1769.37	-476.12	40°24'04.764"N	104°18'59.974"W	0.00	
8317.00†	90.000	181.473	6302.99	1913.49	-1869.34	-478.69	40°24'03.776"N	104°19'00.007"W	0.00	
8417.00†	90.000	181.473	6302.99	2013.03	-1969.31	-481.26	40°24'02.788"N	104°19'00.041"W	0.00	
8517.00†	90.000	181.473	6302.99	2112.58	-2069.27	-483.83	40°24'01.800"N	104°19'00.074"W	0.00	
8617.00†	90.000	181.473	6302.99	2212.12	-2169.24	-486.40	40°24'00.812"N	104°19'00.107"W	0.00	
8717.00†	90.000	181.473	6302.99	2311.67	-2269.21	-488.97	40°23'59.824"N	104°19'00.140"W	0.00	
8817.00†	90.000	181.473	6302.99	2411.21	-2369.18	-491.55	40°23'58.837"N	104°19'00.173"W	0.00	
8917.00†	90.000	181.473	6302.99	2510.76	-2469.14	-494.12	40°23'57.849"N	104°19'00.207"W	0.00	
9017.00†	90.000	181.473	6302.99	2610.30	-2569.11	-496.69	40°23'56.861"N	104°19'00.240"W	0.00	
9117.00†	90.000	181.473	6302.99	2709.85	-2669.08	-499.26	40°23'55.873"N	104°19'00.273"W	0.00	
9217.00†	90.000	181.473	6302.99	2809.39	-2769.04	-501.83	40°23'54.885"N	104°19'00.306"W	0.00	
9317.00†	90.000	181.473	6302.99	2908.94	-2869.01	-504.40	40°23'53.897"N	104°19'00.339"W	0.00	
9417.00†	90.000	181.473	6302.99	3008.48	-2968.98	-506.97	40°23'52.910"N	104°19'00.373"W	0.00	
9517.00†	90.000	181.473	6303.00	3108.03	-3068.94	-509.54	40°23'51.922"N	104°19'00.406"W	0.00	
9617.00†	90.000	181.473	6303.00	3207.57	-3168.91	-512.11	40°23'50.934"N	104°19'00.439"W	0.00	
9717.00†	90.000	181.473	6303.00	3307.12	-3268.88	-514.68	40°23'49.946"N	104°19'00.472"W	0.00	
9817.00†	90.000	181.473	6303.00	3406.66	-3368.84	-517.25	40°23'48.958"N	104°19'00.505"W	0.00	
9917.00†	90.000	181.473	6303.00	3506.21	-3468.81	-519.83	40°23'47.970"N	104°19'00.539"W	0.00	
10017.00†	90.000	181.473	6303.00	3605.75	-3568.78	-522.40	40°23'46.983"N	104°19'00.572"W	0.00	
10117.00†	90.000	181.473	6303.00	3705.30	-3668.75	-524.97	40°23'45.995"N	104°19'00.605"W	0.00	
10217.00†	90.000	181.473	6303.00	3804.84	-3768.71	-527.54	40°23'45.007"N	104°19'00.638"W	0.00	
10317.00†	90.000	181.473	6303.00	3904.39	-3868.68	-530.11	40°23'44.019"N	104°19'00.671"W	0.00	
10417.00†	90.000	181.473	6303.00	4003.93	-3968.65	-532.68	40°23'43.031"N	104°19'00.705"W	0.00	
10517.00†	90.000	181.473	6303.00	4103.48	-4068.61	-535.25	40°23'42.043"N	104°19'00.738"W	0.00	
10617.00†	90.000	181.473	6303.00	4203.02	-4168.58	-537.82	40°23'41.056"N	104°19'00.771"W	0.00	
10717.00†	90.000	181.473	6303.00	4302.57	-4268.55	-540.39	40°23'40.068"N	104°19'00.804"W	0.00	
10817.00†	90.000	181.473	6303.00	4402.11	-4368.51	-542.96	40°23'39.080"N	104°19'00.837"W	0.00	
10917.00†	90.000	181.473	6303.00	4501.66	-4468.48	-545.54	40°23'38.092"N	104°19'00.871"W	0.00	
10933.20	90.000	181.473	6303.00 <sup>1</sup>	4517.78	-4484.67	-545.95	40°23'37.932"N	104°19'00.876"W	0.00	End of Tangent





# Planned Wellpath Report

ANTELOPE 11-14-15HNB (REV-A.0) PWP

Page 6 of 7



REFERENCE WELLPATH IDENTIFICATION			
Operator	BONANZA CREEK OIL COMPANY	Slot	SLOT#05 ANTELOPE 11-14-15HNB (382'FNL & 1093'FWL,SEC.13)
Area	COLORADO	Well	ANTELOPE 11-14-15HNB
Field	WELD COUNTY	Wellbore	ANTELOPE 11-14-15HNB PWB
Facility	SEC.15-T5N-R62W		

HOLE & CASING SECTIONS - Ref Wellbore: ANTELOPE 11-14-15HNB PWB    Ref Wellpath: ANTELOPE 11-14-15HNB (REV-A.0) PWP									
String/Diameter	Start MD [ft]	End MD [ft]	Interval [ft]	Start TVD [ft]	End TVD [ft]	Start N/S [ft]	Start E/W [ft]	End N/S [ft]	End E/W [ft]
7in Casing Intermediate	17.00	6698.58	6681.58	17.00	6302.99	0.00	0.00	-251.46	-437.08
4.5in Casing Production	17.00	10933.00	10916.00	17.00	6303.00	0.00	0.00	-4484.48	-545.95

TARGETS									
Name	MD [ft]	TVD [ft]	North [ft]	East [ft]	Grid East [US ft]	Grid North [US ft]	Latitude	Longitude	Shape
ANTELOPE A-E-15HNB SECTION 15		0.00	80.15	2.78	3330010.50	1393097.07	40°24'23.040"N	104°18'53.784"W	polygon
1) ANTELOPE 11-14-15HNB BHL FROM PLAT REV-1 (470'FSL & 660'FWL,SEC.15)	10933.20	6303.00	-4484.67	-545.95	3329522.83	1388525.51	40°23'37.932"N	104°19'00.876"W	point
ANTELOPE 11-14-15HNB TARGET		6303.00	-156.65	-437.24	3329573.70	1392854.42	40°24'20.700"N	104°18'59.472"W	point
ANTELOPE A-E-15HNB HARDLINES 460' SETBACK FNL/FSL		6303.00	80.15	2.78	3330010.50	1393097.07	40°24'23.040"N	104°18'53.784"W	polygon

SURVEY PROGRAM - Ref Wellbore: ANTELOPE 11-14-15HNB PWB    Ref Wellpath: ANTELOPE 11-14-15HNB (REV-A.0) PWP				
Start MD [ft]	End MD [ft]	Positional Uncertainty Model	Log Name/Comment	Wellbore
17.00	10933.20	NaviTrak (Standard)		ANTELOPE 11-14-15HNB PWB



**Planned Wellpath Report**  
**ANTELOPE 11-14-15HNB (REV-A.0) PWP**  
Page 7 of 7



REFERENCE WELLPATH IDENTIFICATION			
Operator	BONANZA CREEK OIL COMPANY	Slot	SLOT#05 ANTELOPE 11-14-15HNB (382'FNL & 1093'FWL,SEC.13)
Area	COLORADO	Well	ANTELOPE 11-14-15HNB
Field	WELD COUNTY	Wellbore	ANTELOPE 11-14-15HNB PWB
Facility	SEC.15-T5N-R62W		

DESIGN COMMENTS				
MD [ft]	Inclination [°]	Azimuth [°]	TVD [ft]	Comment
17.00	0.000	308.444	17.00	Tie On
1300.00	0.000	308.444	1300.00	End of Tangent
1900.00	12.000	308.444	1895.62	End of Build
3889.30	12.000	308.444	3841.45	End of Tangent
4489.30	0.000	181.473	4437.07	End of Drop
5810.40	0.000	181.473	5758.17	End of Tangent
6446.76	70.000	181.473	6247.63	End of Build
6516.76	70.000	181.473	6271.57	End of Tangent
6698.58	90.000	181.473	6302.99	End of 3D Arc
10933.20	90.000	181.473	6303.00	End of Tangent