

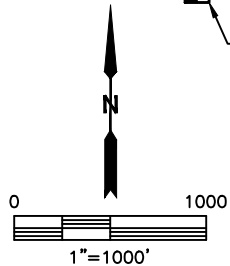
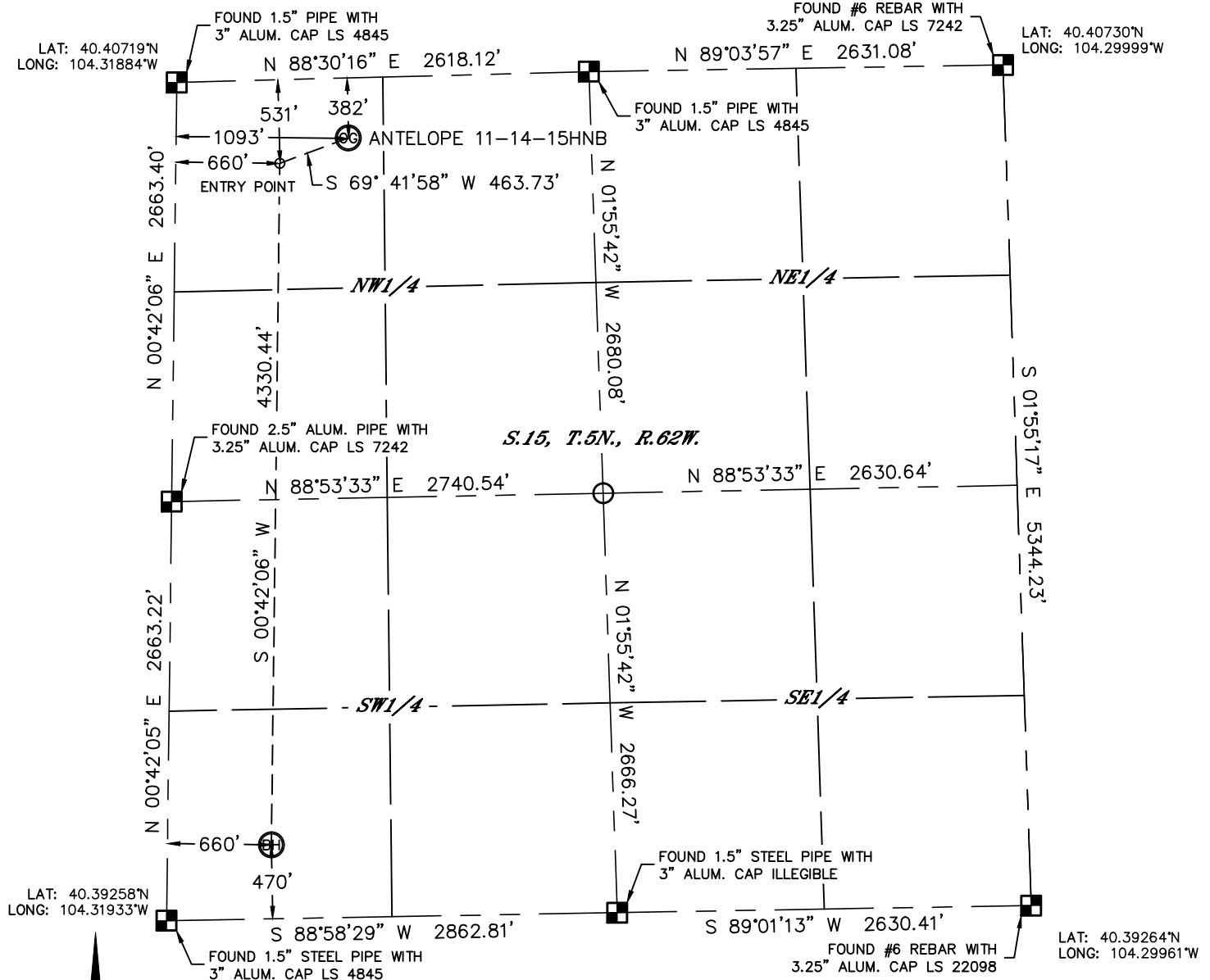


Lat40°, Inc. 1635 Foxtrail Drive, Suite 325 Loveland, CO 970-776-3321

WELL LOCATION CERTIFICATE

THIS MAP DOES NOT REPRESENT A BOUNDARY SURVEY

SECTION: 15
TOWNSHIP: 5N
RANGE: 62W



In accordance with a request from Jim Foster with BONANZA CREEK ENERGY, INC. Lat40°, Inc. has determined the surface location of the ANTELOPE 11-14-15HNB to be 382' from the NORTH line and 1093' from the WEST line and the bottom hole to be 470' from the SOUTH line and 660' from the WEST line as measured at right angles from the section lines of Section 15, Township 5 North, Range 62 West of the Sixth Principal Meridian, County of Weld, State of Colorado.

I hereby state that this Well Location Certificate was prepared by me, or under my direct supervision, that the fieldwork was completed on 6/5/2014, for and on behalf of BONANZA CREEK ENERGY, INC. That this is not a Land Survey Plat or an Improvement Survey Plat, and that it is not to be relied upon for establishment of fence, building, or other future improvement lines.

- NOTE:
- 1) Bearings shown are Grid Bearings of the Colorado State Plane Coordinate System, North Zone, North American Datum 1983. The lined dimensions as contained herein are based upon the "U.S. Survey Foot."
 - 2) Ground elevations are based on an observed GPS elevation (NAVD 1988 DATUM).
 - 3) IMPROVEMENTS: See LOCATION DRAWING for all visible improvements within 500' of disturbed area.
 - 4) SURFACE USE: EX. WELL PAD/PRODUCTION FACILITY
 - 5) INSTRUMENT OPERATOR: ADAM KELLY
 - 6) NEAREST CULTURAL ITEMS:
BUILDING: +5280'
BUILDING UNIT: +5280'
HIGH OCCUPANCY BUILDING UNIT: +5280'
DESIGNATED OUTSIDE ACTIVITY AREA: +5280'
PUBLIC ROAD: +5280'
ABOVEGROUND UTILITY: 838' NW
RAILROAD: +5280'
PROPERTY LINE: 382' N

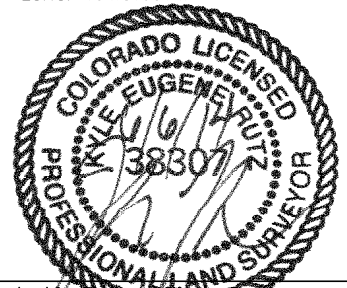
LEGEND

■ = ALIQUOT MONUMENT AS DESCRIBED
○ = CALCULATED POSITION

SURFACE LOCATION
LAT: 40.40618°N
LONG: 104.31495°W
PDOP: 2.4
ELEV: 4698'
1/4,1/4: NWNW

ENTRY POINT
LAT: 40.40575°N
LONG: 104.31652°W

BOTTOM HOLE
LAT: 40.39387°N
LONG: 104.31691°W



Kyle E. Rutz—On behalf of
Colorado Licensed Professional
Land Surveyor No. 38307
DATE: 6/4/2014
PROJECT#: 2014098