

PHOTO LOCATION: LATITUDE LONGITUDE
 NAD 83: (40° 11' 47.30"N) (109° 01' 57.72"W)

CAMERA ANGLE: NORTH



PHOTO LOCATION: LATITUDE LONGITUDE
 NAD 83: (40° 11' 47.30"N) (109° 01' 57.72"W)

CAMERA ANGLE: SOUTH

RETAMCO OPERATING, INC.

REFERENCE AREA PHOTO

**RETAMCO FEDERAL 3-104-26-9
 SW ¼ SE ¼ OF SECTION 26, T3N, R104W,
 6th P.M., RIO BLANCO COUNTY,
 COLORADO.**

TIMBERLINE

(435) 789-1365

ENGINEERING & LAND SURVEYING, INC.
 209 NORTH 300 WEST - VERNAL, UTAH 84078

DATE PHOTOS TAKEN: 4-29-14	PHOTOS TAKEN BY: N.H.	SHEET 16 OF 17
DATE DRAWN: 5-5-14	DRAWN BY: M.W.W.	
Date Last Revised:		

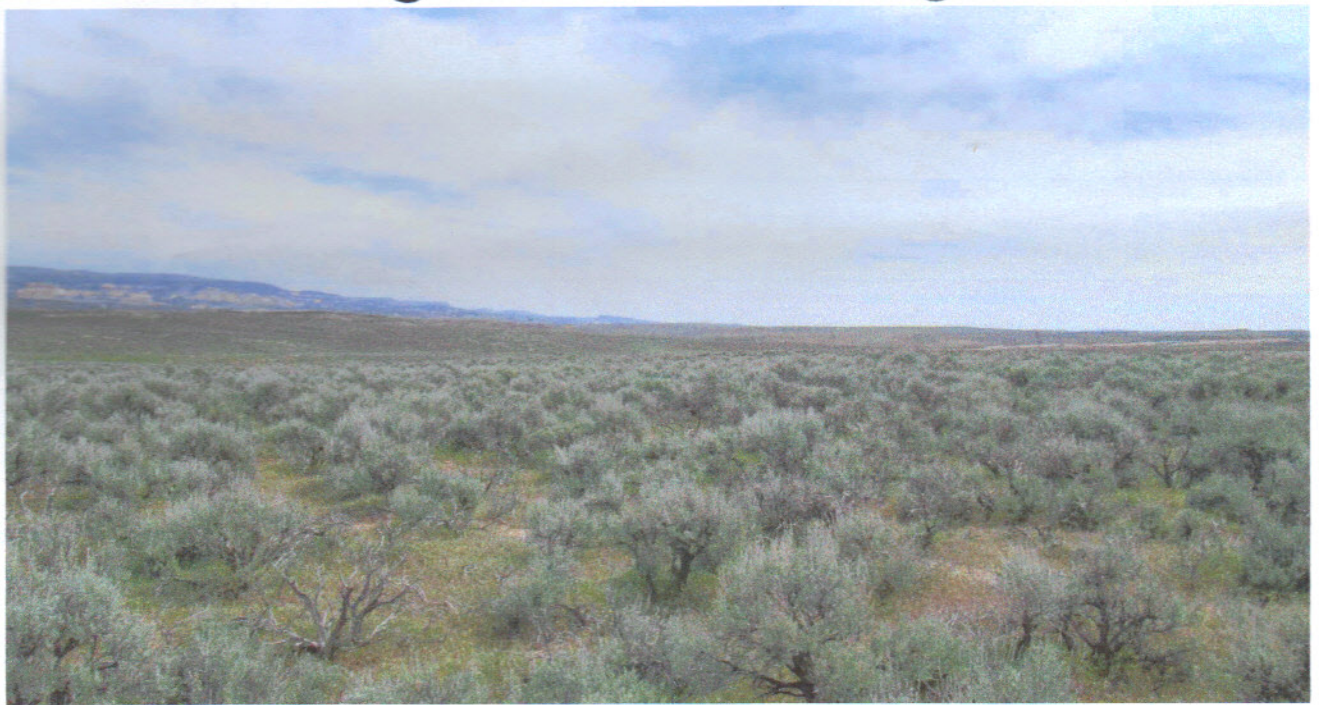


PHOTO LOCATION: LATITUDE LONGITUDE
 NAD 83: (40° 11' 47.30"N) (109° 01' 57.72"W)

CAMERA ANGLE: EAST

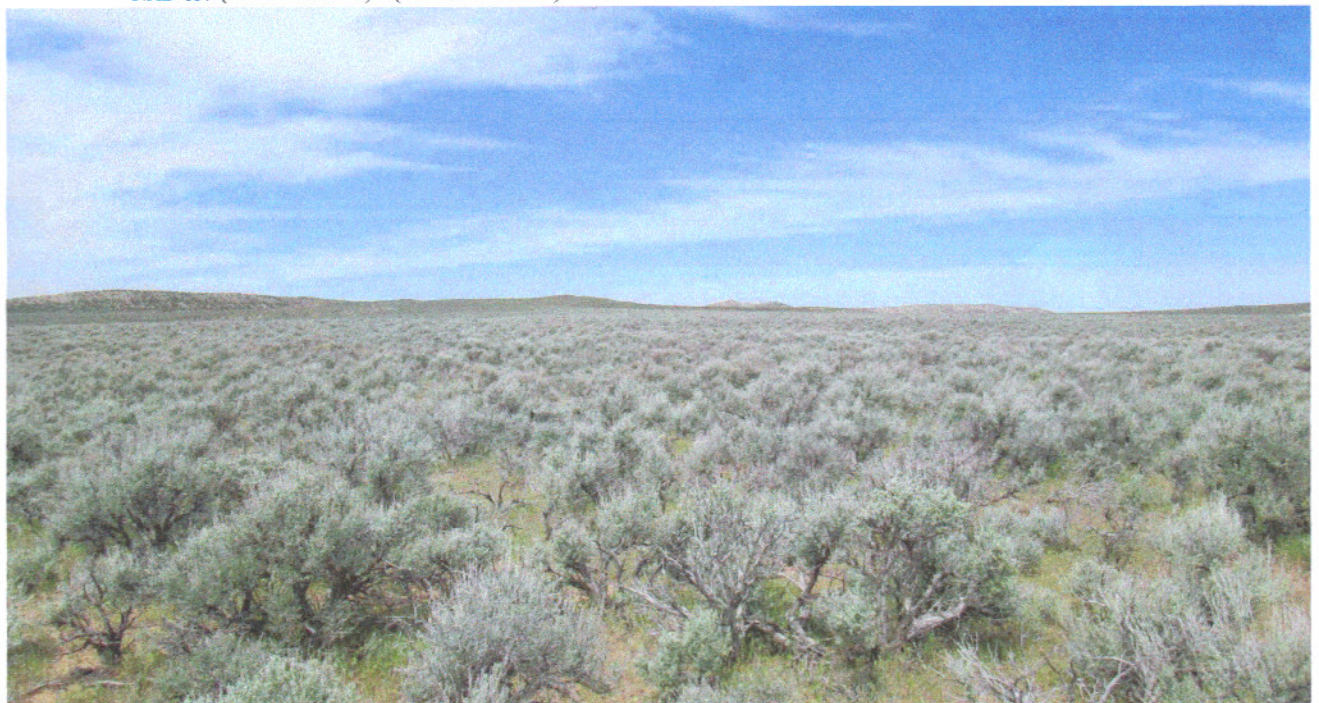


PHOTO LOCATION: LATITUDE LONGITUDE
 NAD 83: (40° 11' 47.30"N) (109° 01' 57.72"W)

CAMERA ANGLE: WEST

RETAMCO OPERATING, INC.

REFERENCE AREA PHOTO

**RETAMCO FEDERAL 3-104-26-9
 SW ¼ SE ¼ OF SECTION 26, T3N, R104W,
 6th P.M., RIO BLANCO COUNTY,
 COLORADO.**

TIMBERLINE

(435) 789-1365

ENGINEERING & LAND SURVEYING, INC.
 209 NORTH 300 WEST - VERNAL, UTAH 84078

DATE PHOTOS TAKEN: 4-29-14	PHOTOS TAKEN BY: N.H.	SHEET 17 OF 17
DATE DRAWN: 5-5-14	DRAWN BY: M.W.W.	
Date Last Revised:		