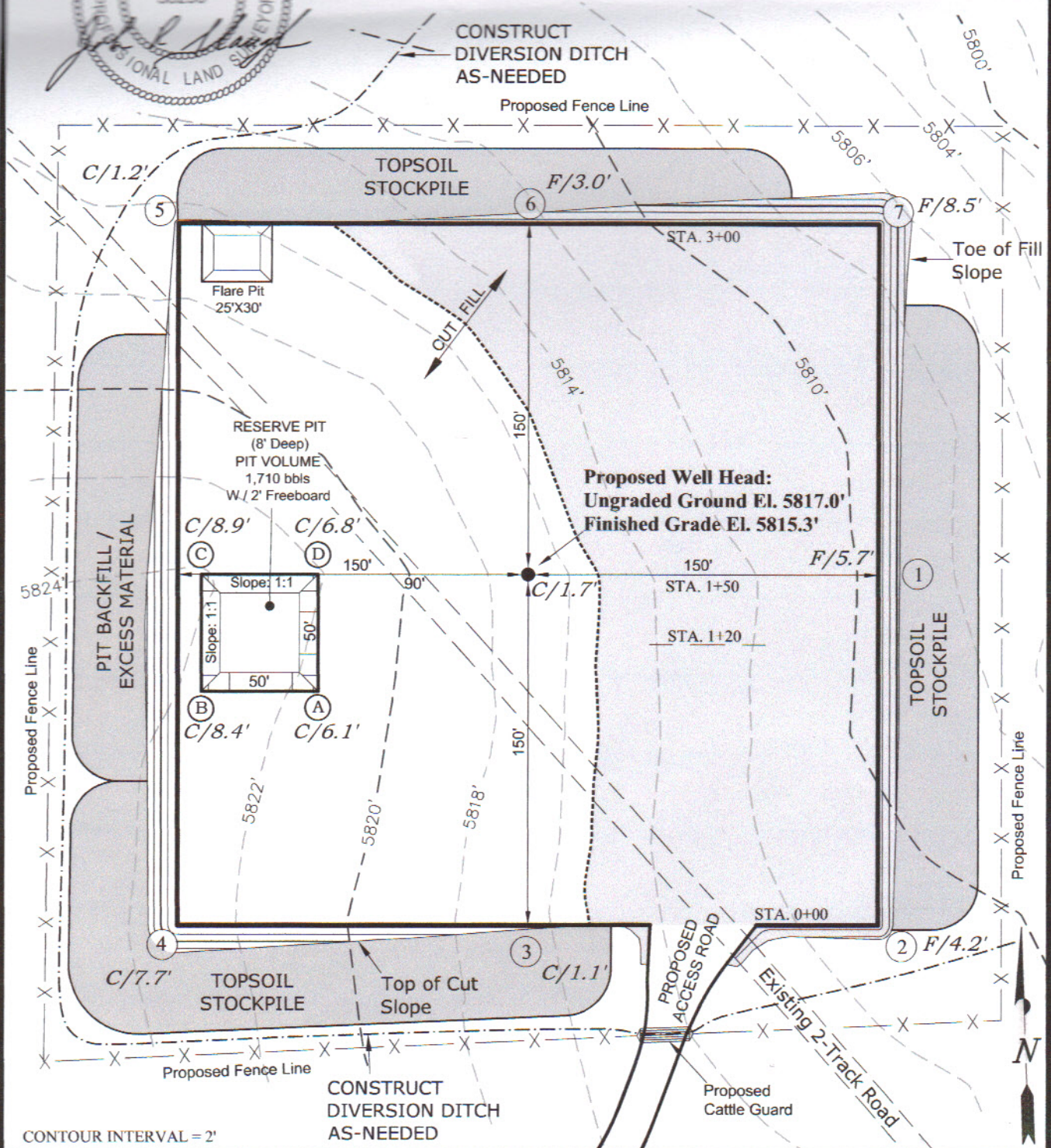


RETAMCO OPERATING, INC.

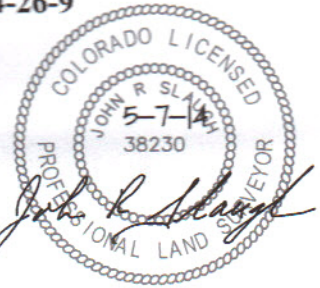
CUT SHEET - RETAMCO FEDERAL 3-104-26-9



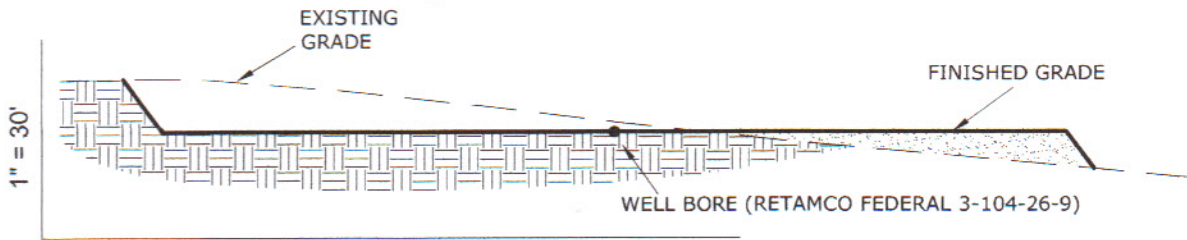
Section 26, T3N, R104W, 6TH P.M.		Qtr/Qtr Location: NE SE		Footage Location: 1866' FSL & 811' FEL	
Date Surveyed: 4-29-14	Date Drawn: 5-3-14	Date Last Revision: 5-15-14 M.W.W.	TIMBERLINE (435) 789-1365		SHEET 7
Surveyed By: N.H.	Drawn By: M.W.W.	Scale: 1" = 60'	ENGINEERING & LAND SURVEYING, INC. 209 NORTH 300 WEST - VERNAL, UTAH 84078		OF 17

RETAMCO OPERATING, INC.

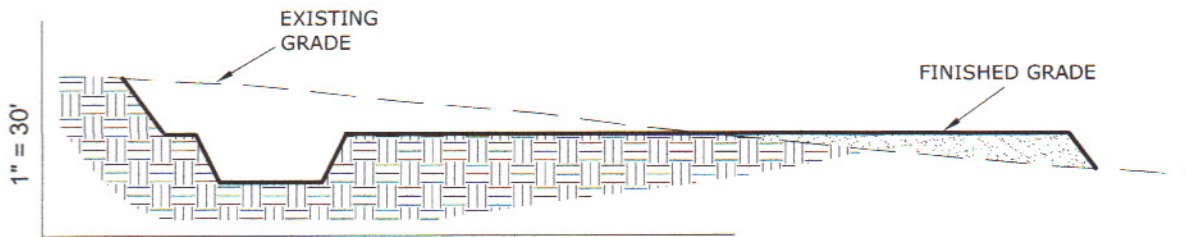
CROSS SECTION - RETAMCO FEDERAL 3-104-26-9



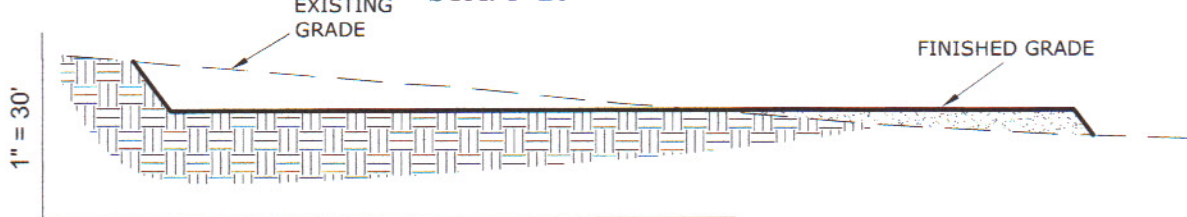
1" = 60' STA. 3+00



1" = 60' STA. 1+50



1" = 60' STA. 1+20



1" = 60' STA. 0+00

NOTE:
UNLESS OTHERWISE NOTED
ALL CUT/FILL SLOPES ARE AT
1.5:1

REFERENCE POINTS

200' NORTHERLY, EL = 5811.0'
250' NORTHERLY, EL = 5808.7'
200' EASTERLY, EL = 5807.2'
250' EASTERLY, EL = 5803.1'

ESTIMATED EARTHWORK QUANTITIES
(No shrink or swell adjustments have been used)
(Expressed in Cubic Yards)

CUT: 6" Topsoil Stripping = 1,840	Excess Material = 2,360
Remaining Location = 7,040	Topsoil / Pit Backfill = 2,360
TOTAL CUT = 8,880	Excess Unbalance = 0
FILL = 6,520	(Without Topsoil)

Section 26, T3N, R104W, 6TH P.M.		Qtr/Qtr Location: NE SE		Footage Location: 1866' FSL & 811' FEL	
Date Surveyed: 4-29-14	Date Drawn: 5-3-14	Date Last Revision:	TIMBERLINE ENGINEERING & LAND SURVEYING, INC. 209 NORTH 300 WEST - VERNAL, UTAH 84078	(435) 789-1365	SHEET
Surveyed By: N.H.	Drawn By: M.W.W.	Scale: 1" = 60'			8