

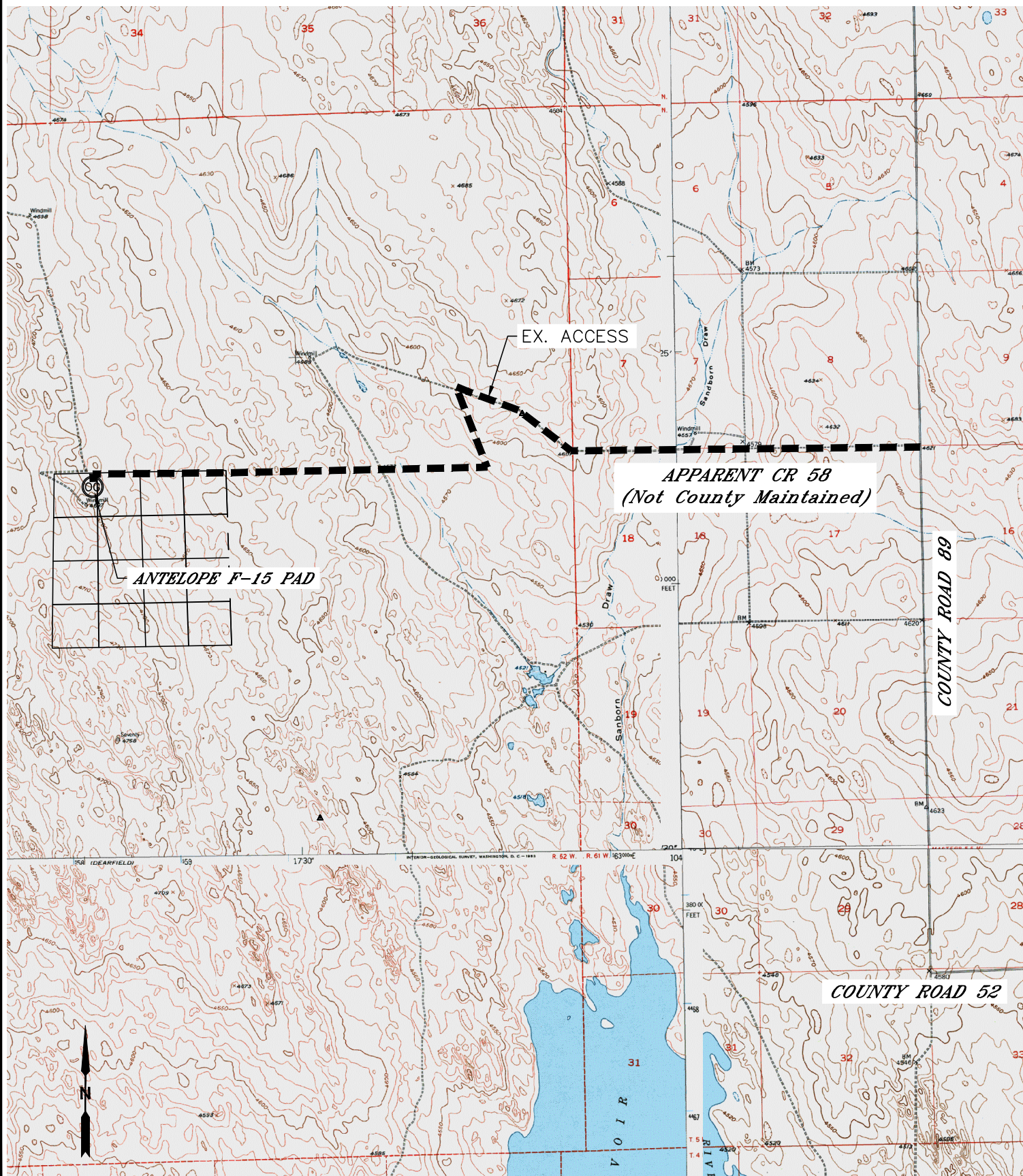


Lat40°, Inc. 1635 Foxtrail Drive, Suite 325 Loveland, CO 970-776-3321

ACCESS ROAD MAP

ANTELOPE F-15 PAD

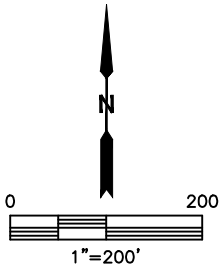
SECTION: 15
TOWNSHIP: 5N
RANGE: 62W





ACCESS ROAD MAP
ANTELOPE F-15 PAD

SECTION: 15
TOWNSHIP: 5N
RANGE: 62W





ACCESS ROAD MAP

ANTELOPE F-15 PAD

SECTION: 15
TOWNSHIP: 5N
RANGE: 62W

EXISTING WELLS:
ANTELOPE F-J-15HNB

PROPOSED WELLS:
ANTELOPE A-E-15HNB
ANTELOPE A-E-15HNC
ANTELOPE A11-E14-15HNB
ANTELOPE A11-E14-15HNC
ANTELOPE 11-14-15 HNB

DRIVING DIRECTIONS TO ANTELOPE F-15 PAD:
FROM THE INTERSECTION OF COUNTY ROAD 89 AND COUNTY ROAD 52, DRIVE NORTH ON COUNTY ROAD 52 FOR 3.0 MILES TO A FIELD ACCESS ROAD TO THE WEST, DRIVE WEST ALONG EXISTING FIELD ACCESS ROAD FOR 2.0 MILES, DRIVE NORTHWEST ALONG FIELD ACCESS ROAD FOR 0.8 MILES, DRIVE SOUTH ALONG FIELD ACCESS ROAD FOR 0.5 MILES, DRIVE WEST ALONG FIELD ACCESS ROAD FOR 2.3 MILES TO THE ANTELOPE F-15 PAD SITE TO THE SOUTH.

