

EE3 LLC
MUTUAL 01-17H ON EXISTING MUTUAL 07-17H
LOCATED IN JACKSON COUNTY, COLORADO
SECTION 17, T7N, R80W, 6th P.M.

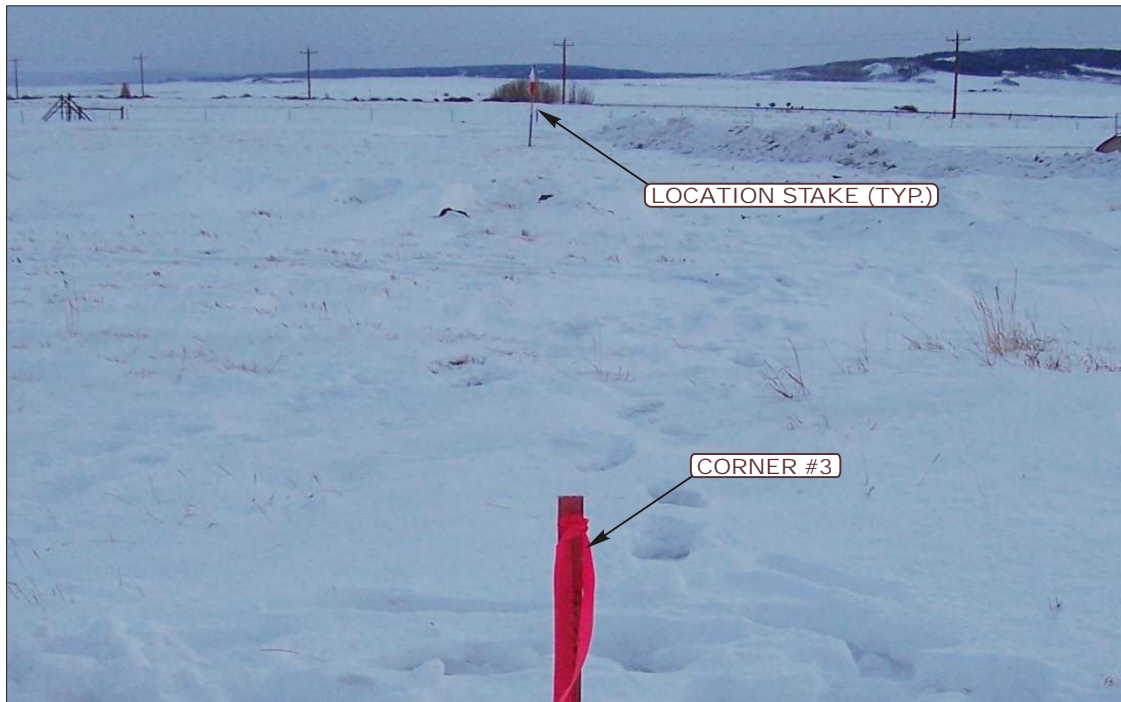


PHOTO: VIEW FROM CORNER #3 OF LOCATION STAKE

CAMERA ANGLE: SOUTHWESTERLY



PHOTO: VIEW FROM BEGINNING OF EXISTING ACCESS

CAMERA ANGLE: EASTERLY



- Since 1964 -

U
E
L
S Uintah Engineering & Land Surveying
85 South 200 East Vernal, Utah 84078
(435) 789-1017 * FAX (435) 789-1813

LOCATION PHOTOS

02 **24** **14**
MONTH DAY YEAR

TAKEN BY: D.S.

DRAWN BY: J.C.

REVISED: 00-00-00

PHOTO
P1

EE3 LLC
MUTUAL 01-17H ON EXISTING MUTUAL 07-17H
LOCATED IN JACKSON COUNTY, COLORADO
SECTION 17, T7N, R80W, 6th P.M.



PHOTO: VIEW OF LOCATION STAKE

CAMERA ANGLE: NORTHERLY



PHOTO: VIEW OF LOCATION STAKE

CAMERA ANGLE: EASTERLY



- Since 1964 -

UE&LS Uintah Engineering & Land Surveying
85 South 200 East Vernal, Utah 84078
(435) 789-1017 * FAX (435) 789-1813

LOCATION PHOTOS

02 **24** **14**
MONTH DAY YEAR

TAKEN BY: D.S.

DRAWN BY: J.C.

REVISED: 00-00-00

PHOTO
P2

EE3 LLC
MUTUAL 01-17H ON EXISTING MUTUAL 07-17H
 LOCATED IN JACKSON COUNTY, COLORADO
 SECTION 17, T7N, R80W, 6th P.M.



PHOTO: VIEW OF LOCATION STAKE

CAMERA ANGLE: SOUTHERLY



PHOTO: VIEW OF LOCATION STAKE

CAMERA ANGLE: WESTERLY



- Since 1964 -

UE&LS Uintah Engineering & Land Surveying
 85 South 200 East Vernal, Utah 84078
 (435) 789-1017 * FAX (435) 789-1813

LOCATION PHOTOS

02	24	14
MONTH	DAY	YEAR

PHOTO
P3

TAKEN BY: D.S.

DRAWN BY: J.C.

REVISED: 00-00-00