

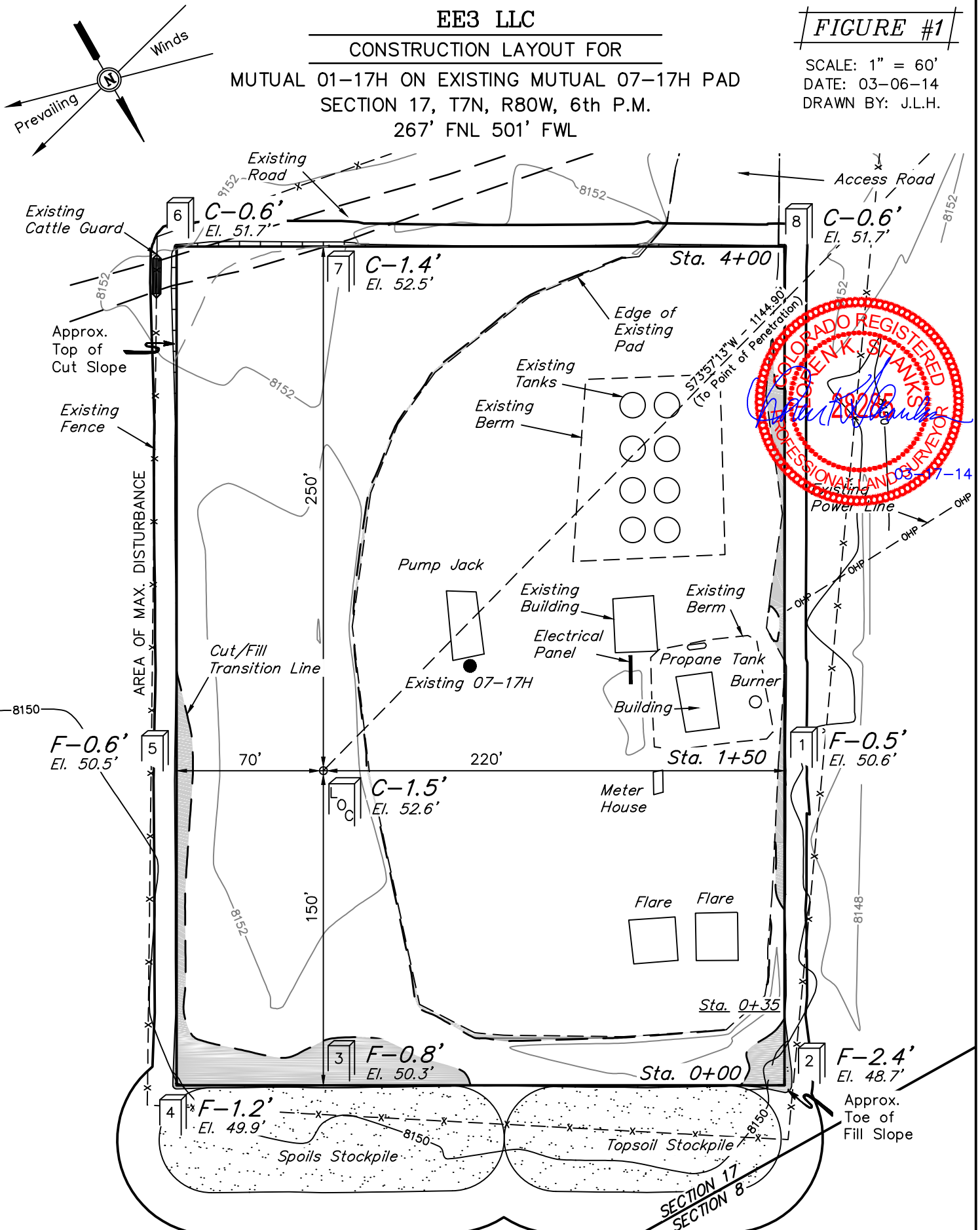
EE3 LLC

CONSTRUCTION LAYOUT FOR

MUTUAL 01-17H ON EXISTING MUTUAL 07-17H PAD
SECTION 17, T7N, R80W, 6th P.M.
267' FNL 501' FWL

FIGURE #1

SCALE: 1" = 60'
DATE: 03-06-14
DRAWN BY: J.L.H.



Elev. Ungraded Ground At Loc. Stake = 8152.6'
FINISHED GRADE ELEV. AT LOC. STAKE = 8151.1'

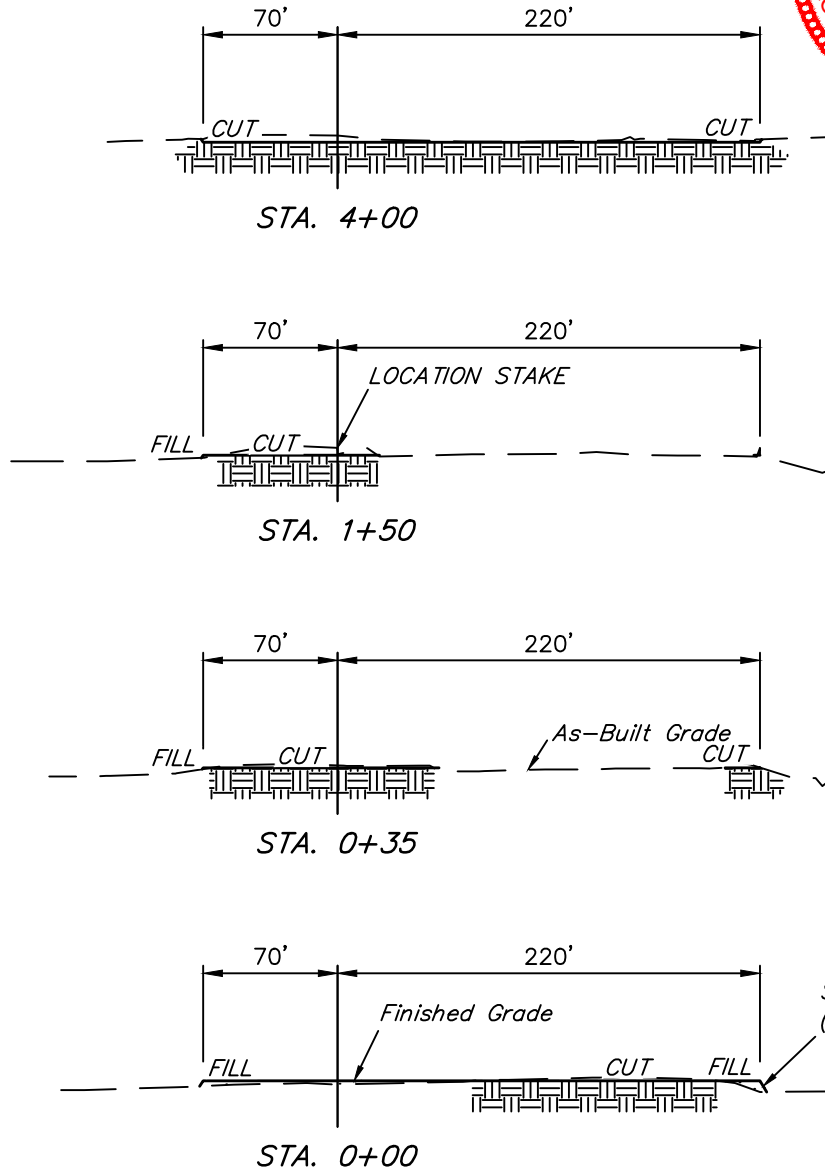
UINTAH ENGINEERING & LAND SURVEYING
85 So. 200 East * Vernal, Utah 84078 * (435) 789-1017

EE3 LLC

FIGURE #2

CONSTRUCTION LAYOUT CROSS SECTIONS FOR
MUTUAL 01-17H ON EXISTING MUTUAL 07-17H PAD
SECTION 17, T7N, R80W, 6th P.M.
267' FNL 501' FWL

1" = 20'
X-Section
Scale
1" = 50'
DATE: 03-06-14
DRAWN BY: J.L.H.



NOTE:

Topsoil should not be
Stripped Below Finished
Grade on Substructure Area.

APPROXIMATE ACREAGE

EXISTING WELL SITE DISTURBANCE = ± 1.510 ACRES
PROPOSED WELL SITE DISTURBANCE = ± 1.179 ACRES
TOTAL = ± 2.689 ACRES
AREA OF MAX DISTURBANCE = ± 3.461 ACRES

* NOTE:
FILL QUANTITY INCLUDES
5% FOR COMPACTION

APPROXIMATE YARDAGES

(6") Topsoil Stripping = 950 Cu. Yds.
Remaining Location = 1,480 Cu. Yds.
TOTAL CUT = 2,430 CU. YDS.
FILL = 70 CU. YDS.

EXCESS MATERIAL = 2,360 Cu. Yds.
Topsoil = 950 Cu. Yds.

EXCESS UNBALANCE = 1,410 Cu. Yds.
(After Interim Rehabilitation)

UINTAH ENGINEERING & LAND SURVEYING
85 So. 200 East * Vernal, Utah 84078 * (435) 789-1017

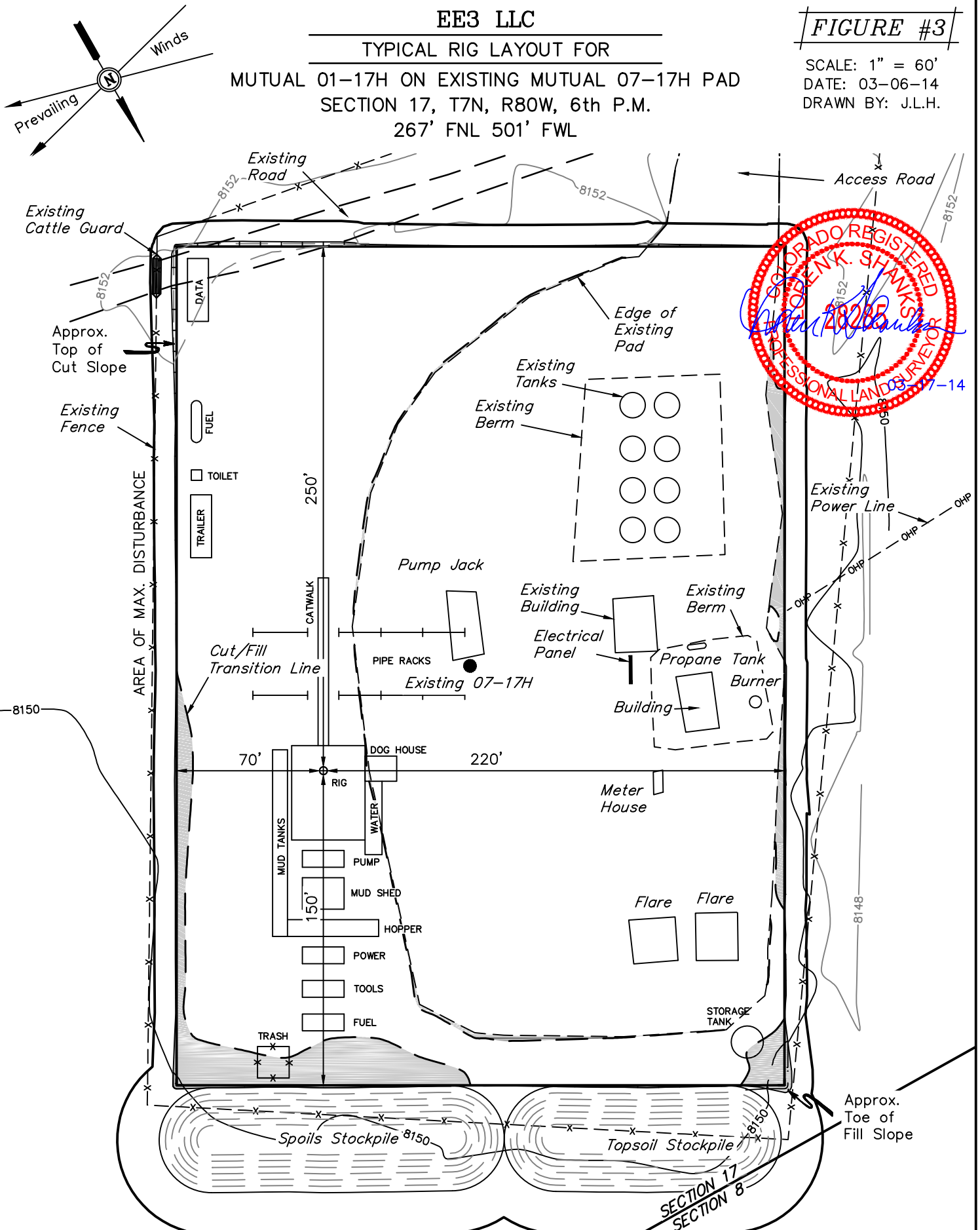
EE3 LLC

TYPICAL RIG LAYOUT FOR

MUTUAL 01-17H ON EXISTING MUTUAL 07-17H PAD
SECTION 17, T7N, R80W, 6th P.M.
267' FNL 501' FWL

FIGURE #3

SCALE: 1" = 60'
DATE: 03-06-14
DRAWN BY: J.L.H.



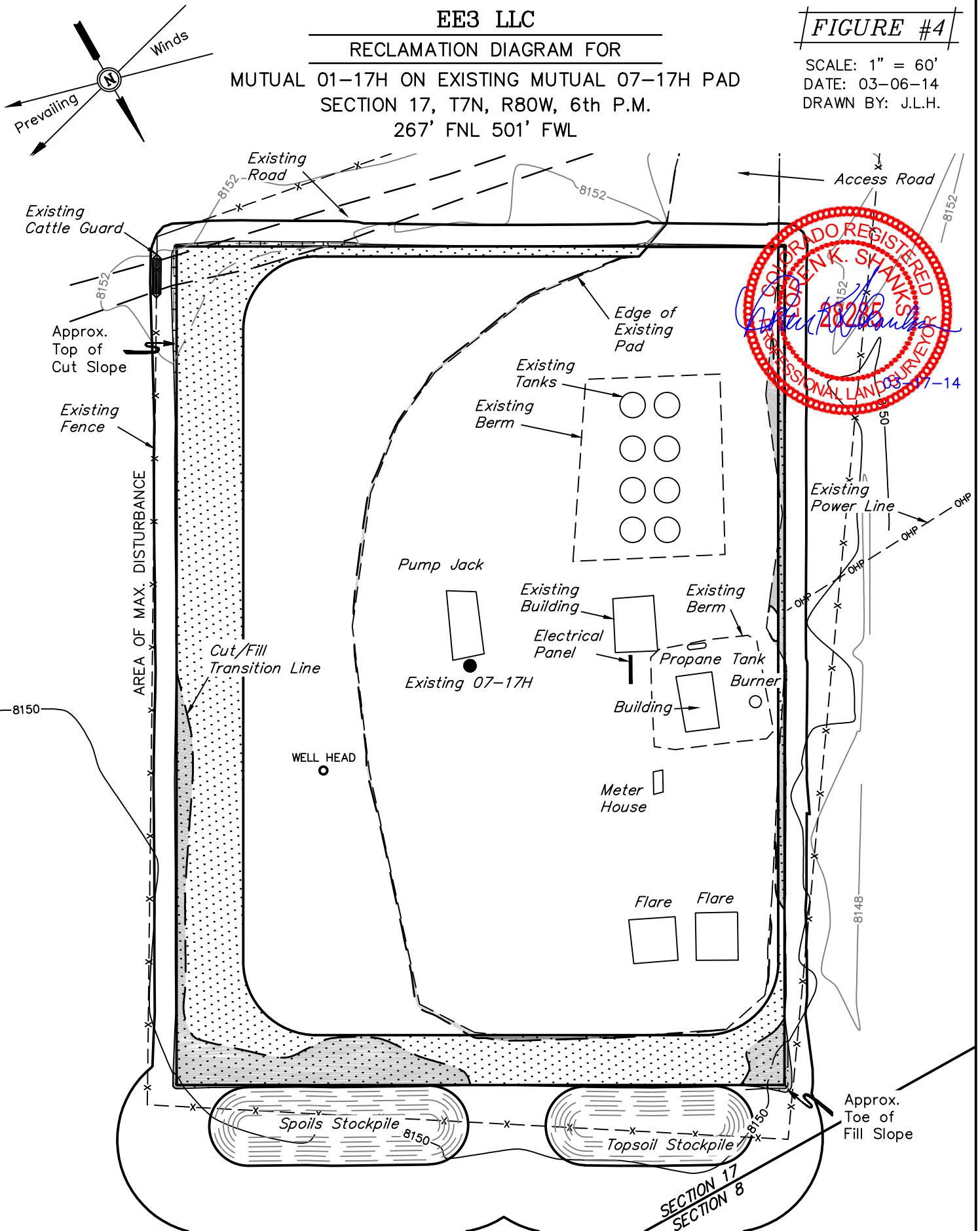
EE3 LLC

RECLAMATION DIAGRAM FOR

MUTUAL 01-17H ON EXISTING MUTUAL 07-17H PAD
SECTION 17, T7N, R80W, 6th P.M.
267' FNL 501' FWL

FIGURE #4

SCALE: 1" = 60'
DATE: 03-06-14
DRAWN BY: J.L.H.



RECLAIMED AREA

APPROXIMATE ACREAGE
UN-RECLAIMED = ± 2.165 ACRES

UINTAH ENGINEERING & LAND SURVEYING
85 So. 200 East * Vernal, Utah 84078 * (435) 789-1017