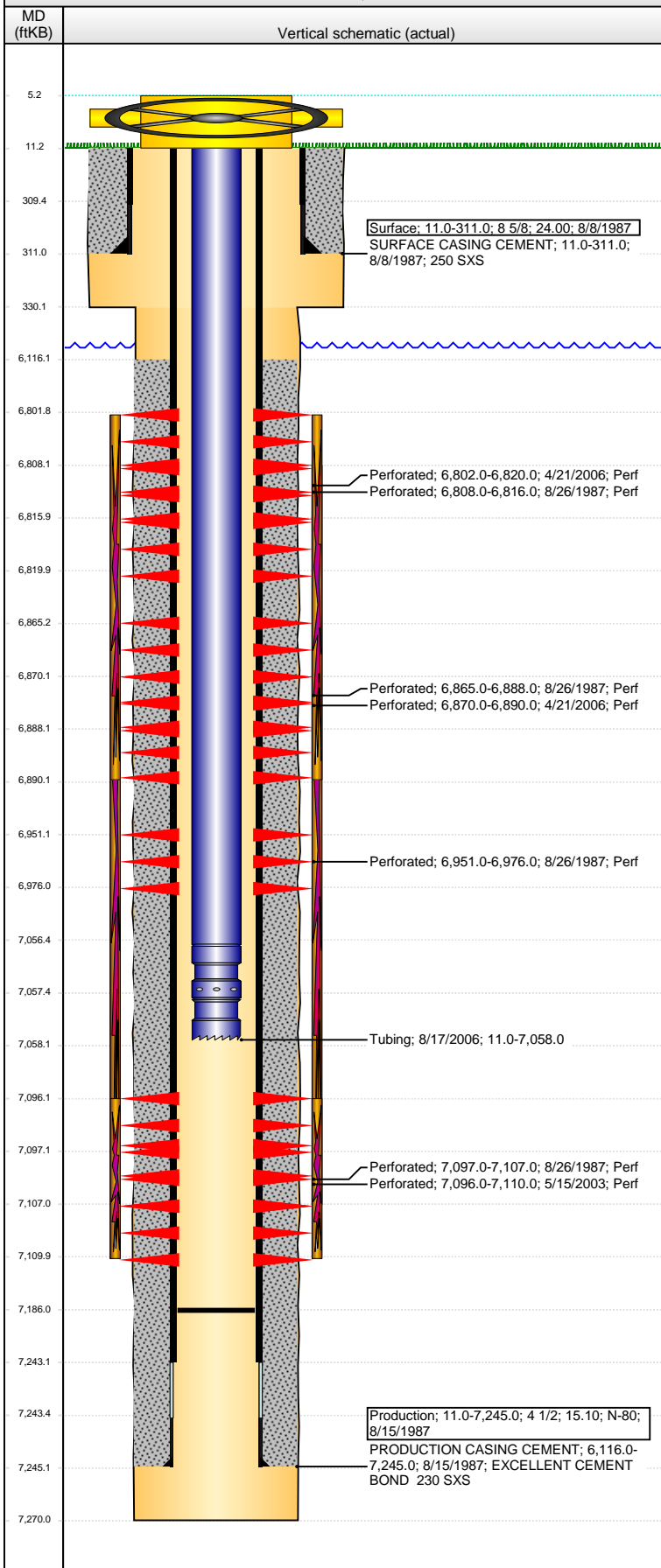


Well Name: STATE RG36-14

VERTICAL - ORIGINAL HOLE, 6/18/2014 3:01:27 PM



Well Header

API	Business Unit	District	Well Config
05-123-13545	WATTENBERG	15	VERTICAL
Original KB Elevation (ft)	KB - GL / MSL (ftKB)	Spud Date	P & A Date
4,838.00	11.00	8/8/1987	

Comment
DISCREPANCIES: DR RPT TD 7260'; ST RPT TD 7270'. DR RPT PROD CSG @ 7245' & 7253'. ST RPT PROD CSG @ 7253'

Directions To Well

Congressional Location

Quarter 1	Quarter 2	Quarter 3	Quarter 4	Section	Township	Twtnshp N...	Range	Rng E/W Dir
		SE	SW	36	4	N	65	W

Bottom Hole Location

North-South Distance (ft)	From N or S Line	East-West Distance (ft)	From E or W Line

Plug Back Total Depths

Date	Depth (ftKB)	Method	Com
8/21/1987	7,173.0	CASED HOLE LOG	DEPTH LOGGER ON CBL
10/8/1998	7,216.0	TAG	TAG TO LAND TUBING
8/17/2006	7,186.0	TAG	CLEAN OUT TO LAND TUBING

Wellbore Sections

Section Des	Size (in)	Act Top, MD (ftKB)	Act Btm, MD (ftKB)
SURFACE	12 1/4	11.0	330.0
PRODUCTION	7 7/8	330.0	7,270.0

Zone Statuses

Zone Name	Status Date	Status	Job
NIOBRARA	9/9/1987	PR	DRILLING/COMPLETION - ORIGINAL, 8/8/1987 00:00
NIOBRARA	4/28/2006	PR	RE-FRAC, 4/18/2006 00:00
NIOBRARA	8/22/2006	PR	RE-FRAC, 4/18/2006 00:00
CODELL	9/9/1987	PR	DRILLING/COMPLETION - ORIGINAL, 8/8/1987 00:00
CODELL	6/2/2003	PR	RE-FRAC, 5/14/2003 00:00
CODELL	4/19/2006	SI	RE-FRAC, 4/18/2006 00:00
CODELL	8/22/2006	PR	RE-FRAC, 4/18/2006 00:00

Casing Strings

Surface, 311.0ftKB

Casing Description	Run Date	OD (in)	Wt/Len (l...)	Grade	Top, MD (ft...)	MD (ftKB)
Surface	8/8/1987	8 5/8	24.00		11.0	311.0

Production, 7,245.0ftKB

Casing Description	Run Date	OD (in)	Wt/Len (l...)	Grade	Top, MD (ft...)	MD (ftKB)
Production	8/15/1987	4 1/2	15.10	N-80	11.0	7,245.0

Cement

Description	Top Depth (ftKB)	Bottom Depth (ftKB)
SURFACE CASING CEMENT	11.0	311.0
Description	Top Depth (ftKB)	Bottom Depth (ftKB)
PRODUCTION CASING CEMENT	6,116.0	7,245.0

Tubing Components

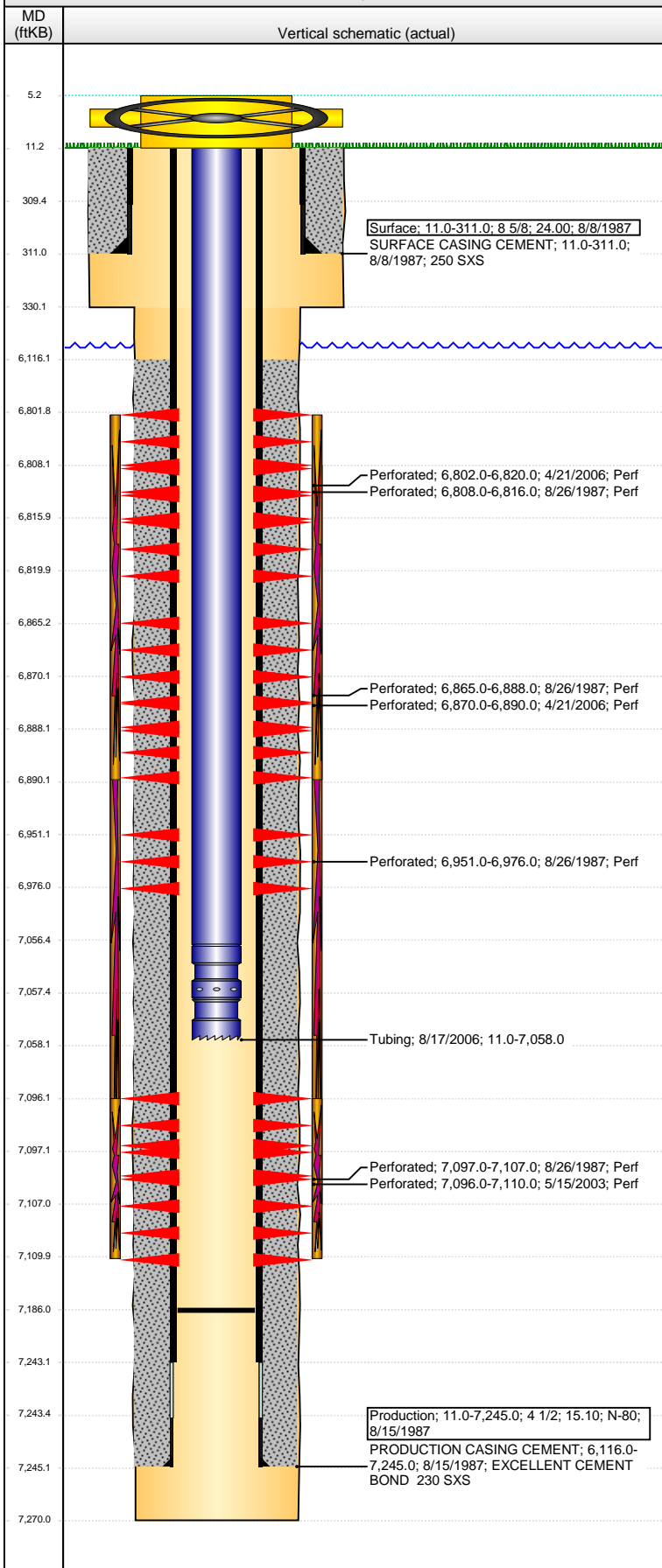
Item Des	OD (in)	Wt (lb/ft)	Grade	Jts	Len (ft)	Btm (ftKB)	Btm (TVD) (ftKB)
EUE 8rd Tubing	2 3/8	4.70	J-55	214	7,045.50	7,056.5	
Seal Nipple	2 3/8			1	1.00	7,057.5	
Notched collar	2 3/8			1	0.50	7,058.0	

Perforation Data

Zone	Bnch/St g	Entered Shot Total	Top (ftKB)	Btm (ftKB)	Date
NIOBRARA, ORIGINAL HOLE		108	6,802.00	6,820.00	4/21/2006
NIOBRARA, ORIGINAL HOLE	A	2	6,808.00	6,816.00	8/26/1987
NIOBRARA, ORIGINAL HOLE	B	5	6,865.00	6,888.00	8/26/1987
NIOBRARA, ORIGINAL HOLE		120	6,870.00	6,890.00	4/21/2006
NIOBRARA, ORIGINAL HOLE	C	3	6,951.00	6,976.00	8/26/1987
CODELL, ORIGINAL HOLE		56	7,096.00	7,110.00	5/15/2003
CODELL, ORIGINAL HOLE		5	7,097.00	7,107.00	8/26/1987

Well Name: STATE RG36-14

VERTICAL - ORIGINAL HOLE, 6/18/2014 3:01:29 PM



Stimulations & Treatments

Date 9/8/1987	Zone NIOBRARA-CODELL, ORIGINAL HOLE	Primary Job Type DRILLING/COMPLETION - ORIGINAL
Technical Result	Tech Result Details	Tech Result Note

Comment
LIMITED ENTRY FRAC

Date 5/28/2003	Zone CODELL, ORIGINAL HOLE	Primary Job Type RE-FRAC
Technical Result	Tech Result Details	Tech Result Note

Comment

Date 4/27/2006	Zone NIOBRARA, ORIGINAL HOLE	Primary Job Type RE-FRAC
Technical Result	Tech Result Details	Tech Result Note

Comment

Other In Hole

Run Date	Des	OD (in)	Top (ftKB)	Btm (ftKB)

Logs

Date	Type	Top, MD (ftKB)	Btm, MD (ftKB)
8/14/1987	COMPENSATED DENSITY	4,396.0	7,253.0
8/14/1987	INDUCTION	122.0	7,270.0
8/21/1987	CEMENT BOND	6,000.0	7,170.0
5/14/2003	GAMMA RAY	6,500.0	7,197.0