

FINAL PRINT
CELL/VOL-GR
Schlumberger

CSU

COMPANY: MIZEL EXPLORATION COMPANY

WELL: HOFF #20-1

FIELD: MATTENBERG

COUNTRY: BELD

STATE: COLORADO

LOCATION: 660' FSL & 1980' FEL

SECT: 20 T1P: 5 N RGE: 64 W

PERMANENT DATUM: GL ELEVATIONS-
LEG MEASURED FROM: 4620.0 F KB: 4682.0 F
LEG MEASURED FROM: 4620.0 F DL: 4620.0 F
DLG. MEASURED FROM: KB

PROGRAM
TAP: NO:
SERIAL: 4A
DATE: 02/28/88

OTHER SERVICES-
CML/CCL-GR

DATE: 28 FEB 87

RUN NO: 1

DEPTH-DRIILLER: 7010.0 F
DEPTH-LOGGER: 6990.0 F
BTH LOG INTERVAL: 6996.0 F
TOP LOG INTERVAL: 5830.0 F
CASING-DRIILLER: 7010.0 F
CASING-LOGGER: 6993.0 F
CASING-LOGGER: 8 5/8" 4 1/2
HEIGHT: 24,000 LB/F 15,100 LB/F
BT SIZE: 12 1/4 7 7/8
DENTS: 303.0 F 7010.0 F

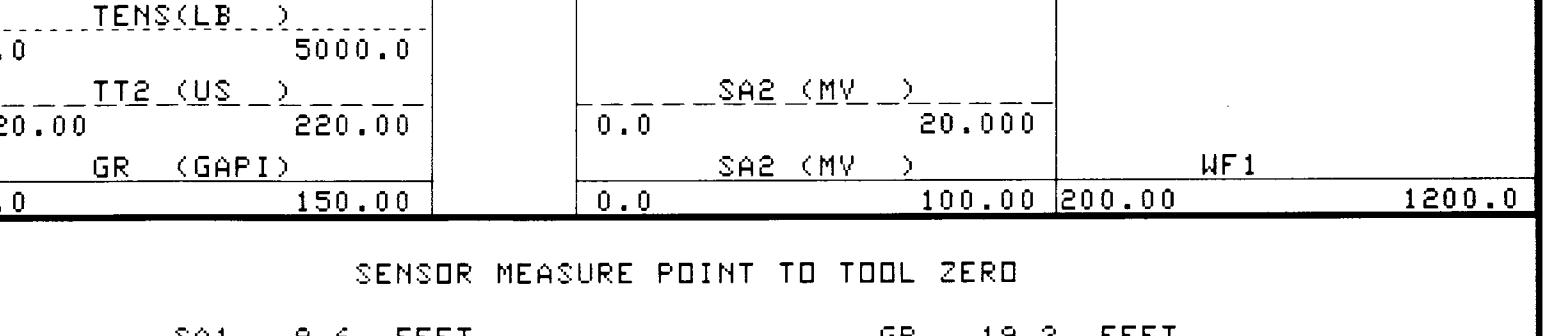
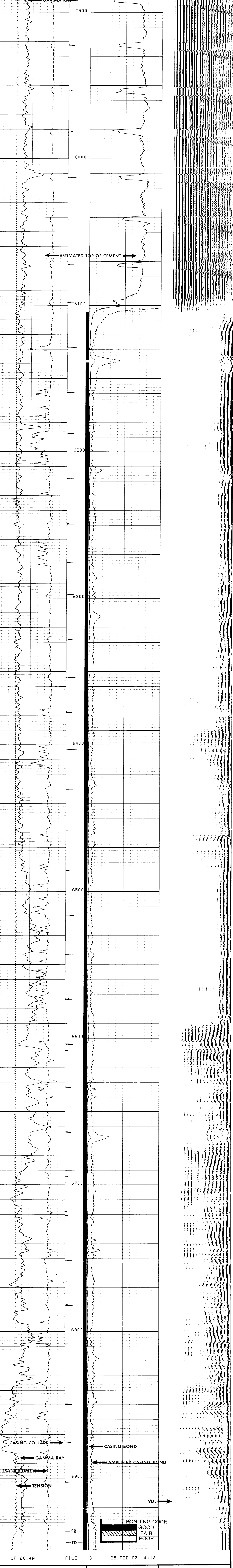
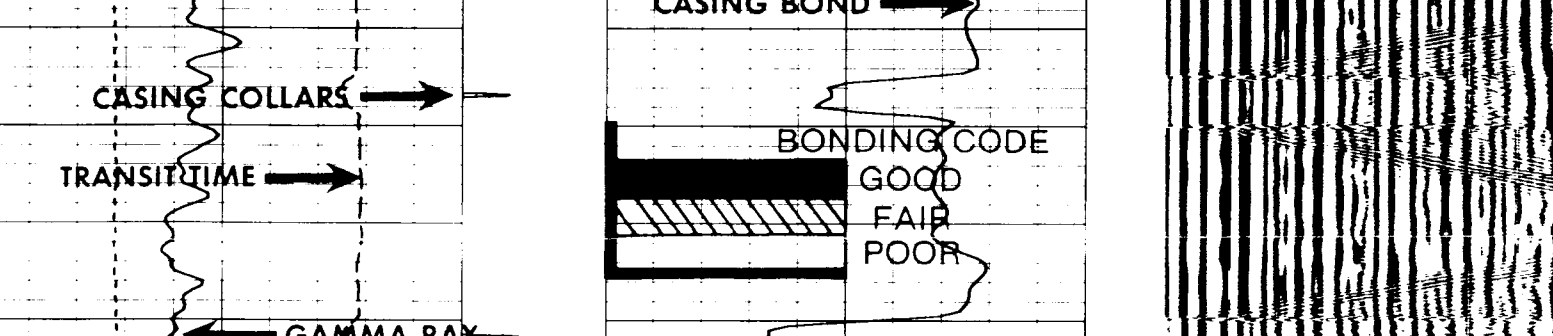
MAX. REC. TEMP: 200.0 DEGF
LOGGING UNIT NO: 8367
LOGGING UNIT LOC: FORT MORGAN, CO.
RECORDED BY: JIM MARTIN
WITNESSED BY: NONE PRESENT

REMARKS:
HOLE FULL OF WATER.
NO CEMENT INFORMATION AVAILABLE.
EXPECTED FREE PIPE AMPLITUDE: 80 MV & 242 US TRAVEL TIME.
ESTIMATED CEMENT TOP: 6066'.
CREW: VAN VUUREN & HOLGUIN
SWS CRANE TRUCK USED TO LOG.

EQUIPMENT NUMBERS-
SMM-AA 131 CCL-AJ 182 SGC-LAA 434 SLC-JH 371
SLS-JF 182

ALL INTERPRETATIONS ARE OPINIONS BASED ON INFERENCES FROM ELECTRICAL OR OTHER MEASUREMENTS AND WE CANNOT, AND DO NOT GUARANTEE THE ACCURACY OR CORRECTNESS OF ANY INTERPRETATIONS, AND WE SHALL NOT, EXCEPT IN THE CASE OF GROSS OR WILLFUL NEGLIGENCE ON OUR PART, BE LIABLE OR RESPONSIBLE FOR ANY LOSS, COSTS, DAMAGES OR EXPENSES INCURRED OR SUSTAINED BY ANYONE RESULTING FROM ANY INTERPRETATION MADE BY ANY OF OUR OFFICERS, AGENTS OR EMPLOYEES. THESE INTERPRETATIONS ARE ALSO SUBJECT TO OUR GENERAL TERMS AND CONDITIONS AS SET OUT IN OUR CURRENT PRICE SCHEDULE.

CP 28.4A FILE 0 25-FEB-87 14:36

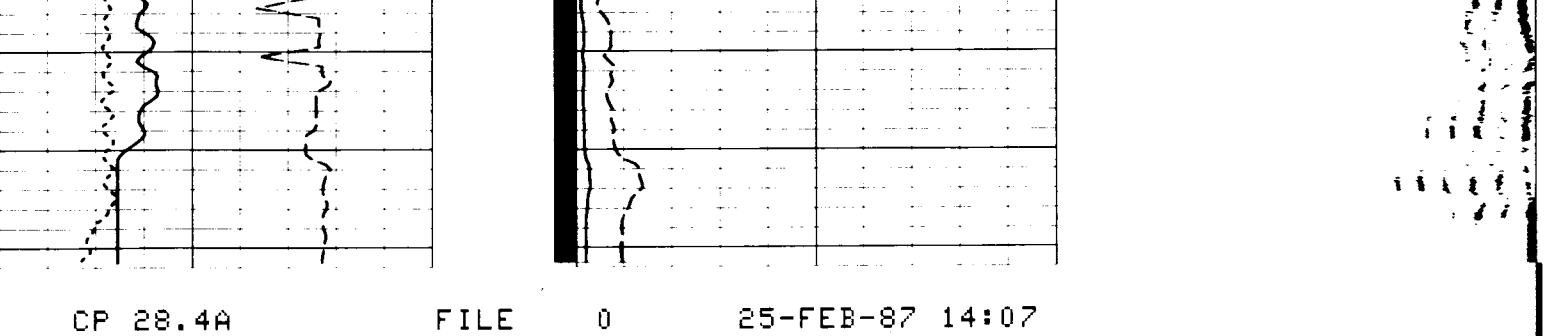
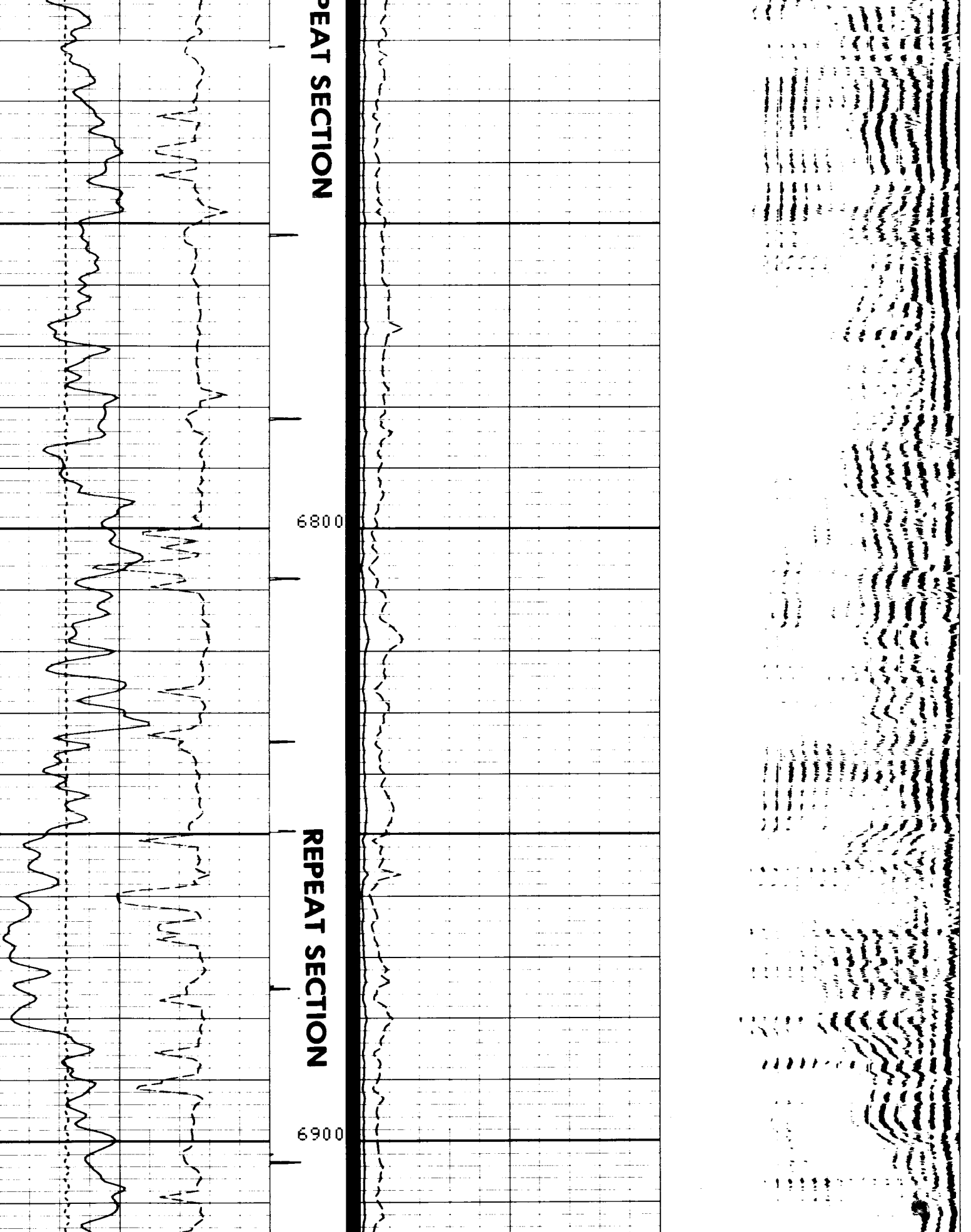
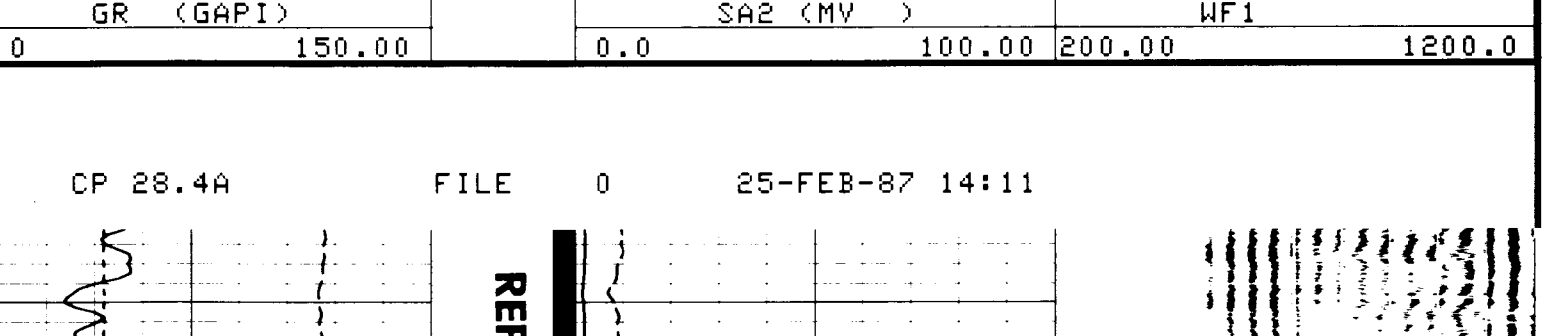


SENSOR MEASURE POINT TO TOOL ZERO

SA1	8.6	FEET	GR	19.3	FEET
DT	8.6	FEET	SA2	8.6	FEET
TT1	8.6	FEET	TO	8.6	FEET
TENS	8.6	FEET	TT2	8.6	FEET
CCL	24.0	FEET			

PARAMETERS

NAME	VALUE	UNIT	NAME	VALUE	UNIT
CSTR	1500.00	PSIA	CHEI	15.1000	LB/F
CDTS	100.000		SPFS	R-H	
DTF	189.000	US/F	DTM	0.0	US/F
DSIN	5	US	DDEL	200	US
SA2G	.780000		DWCD	512	
FPHI	SPHI		SAIG	1.00000	
BHS	CASE		CSIZ	4.50000	IN
BS	7.87500	IN			



SENSOR MEASURE POINT TO TOOL ZERO

SA1	8.6	FEET	GR	19.3	FEET
DT	8.6	FEET	SA2	8.6	FEET
TT1	8.6	FEET	TO	8.6	FEET
TENS	8.6	FEET	TT2	8.6	FEET
CCL	24.0	FEET			

PARAMETERS

NAME	VALUE	UNIT	NAME	VALUE	UNIT
CSTR	1500.00	PSIA	CHEI	15.1000	LB/F
CDTS	100.000		SPFS	R-H	
DTF	189.000	US/F	DTM	0.0	US/F
DSIN	5	US	DDEL	200	US
SA2G	.780000		DWCD	512	
FPHI	SPHI		SAIG	1.00000	
BHS	CASE		CSIZ	4.50000	IN
BS	7.87500	IN			