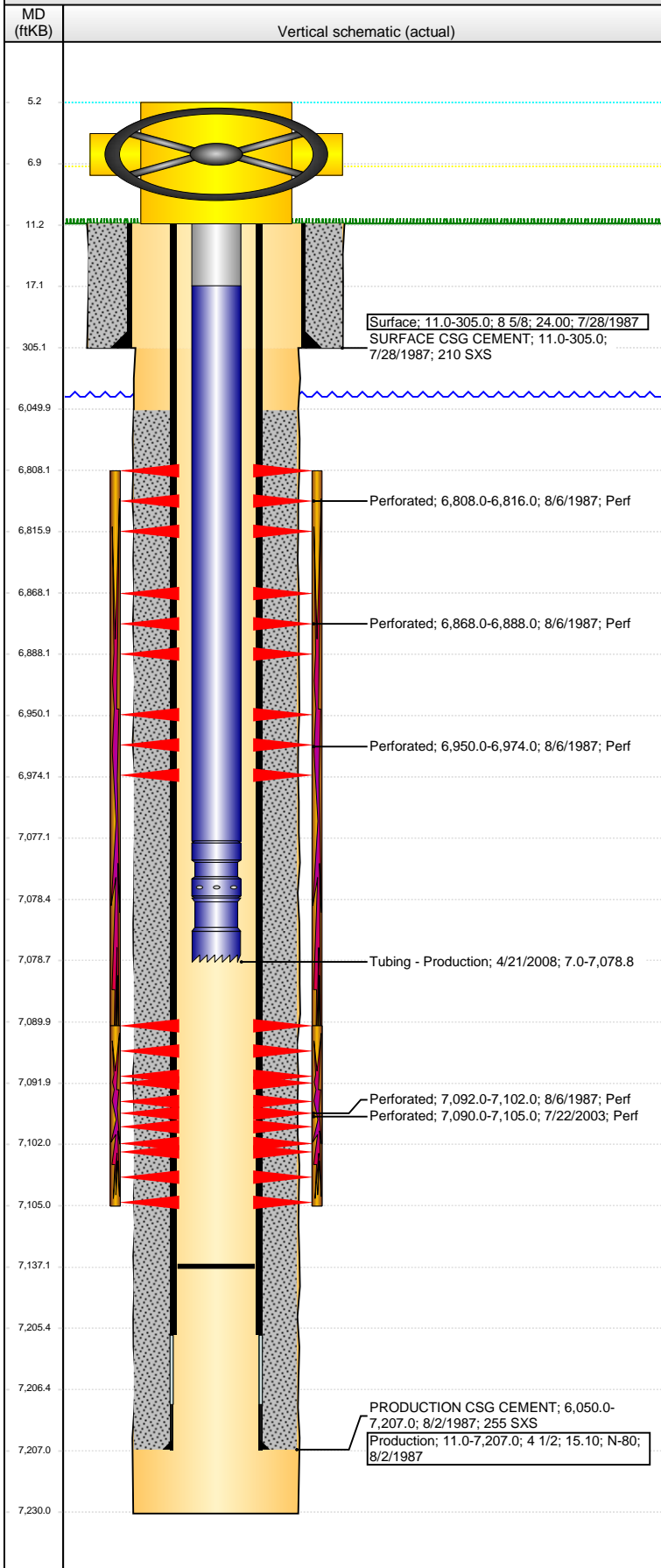


Well Name: STATE RG36-06

VERTICAL - ORIGINAL HOLE, 6/18/2014 12:17:25 PM



Well Header

API	Business Unit	District	Well Config
05-123-13543	WATTENBERG	15	VERTICAL
Original KB Elevation (ft)	KB - GL / MSL (ftKB)	Spud Date	P & A Date
4,825.00	11.00	7/28/1987	
Comment			

Directions To Well

WCR 47 & 38, NORTH 5/10, EAST 4/10, NORTH INTO.

Congressional Location

Quarter 1	Quarter 2	Quarter 3	Quarter 4	Section	Township	Twnshp N...	Range	Rng E/W Dir
		SE	NW	36	4	N	65	W

Bottom Hole Location

North-South Distance (ft)	From N or S Line	East-West Distance (ft)	From E or W Line

Plug Back Total Depths

Date	Depth (ftKB)	Method	Com
8/5/1987	7,137.0	CASED HOLE LOG	
11/26/2003	7,146.0	TAG	
4/4/2008	7,137.0	TAG	

Wellbore Sections

Section Des	Size (in)	Act Top, MD (ftKB)	Act Btm, MD (ftKB)
SURFACE	12 1/4	11.0	305.0
PRODUCTION	7 7/8	305.0	7,230.0

Zone Statuses

Zone Name	Status Date	Status	Job
NIOBRARA	8/26/1987	PR	DRILLING/COMPLETION - ORIGINAL, 8/5/1987 00:00
NIOBRARA	7/29/2003	PR	RE-FRAC, 7/28/2003 00:00
NIOBRARA	5/27/2008	PR	TRI-FRAC, 4/3/2008 06:00
CODELL	8/26/1987	PR	DRILLING/COMPLETION - ORIGINAL, 8/5/1987 00:00
CODELL	7/29/2003	PR	RE-FRAC, 7/28/2003 00:00
CODELL	5/27/2008	PR	TRI-FRAC, 4/3/2008 06:00

Casing Strings

Surface, 305.0ftKB

Casing Description	Run Date	OD (in)	Wt/Len (l...)	Grade	Top, MD (ft...)	MD (ftKB)
Surface	7/28/1987	8 5/8	24.00		11.0	305.0

Production, 7,207.0ftKB

Casing Description	Run Date	OD (in)	Wt/Len (l...)	Grade	Top, MD (ft...)	MD (ftKB)
Production	8/2/1987	4 1/2	15.10	N-80	11.0	7,207.0

Cement

Description	Top Depth (ftKB)	Bottom Depth (ftKB)
SURFACE CSG CEMENT	11.0	305.0
Description	Top Depth (ftKB)	Bottom Depth (ftKB)
PRODUCTION CSG CEMENT	6,050.0	7,207.0

Tubing Components

Item Des	OD (in)	Wt (lb/ft)	Grade	Jts	Len (ft)	Btm (ftKB)	Btm (TVD) (ftKB)
Tubing Pup Joint	2 3/8	4.70	J-55	1	10.00	17.0	
Tubing	2 3/8	4.70	J-55	221	7,060.15	7,077.1	
Pump Seating	2 3/8			1	1.20	7,078.3	
Nipple							
Notched collar	2 3/8	4.70	J-55	1	0.45	7,078.8	

Perforation Data

Zone	Bnch/St g	Entered Shot Total	Top (ftKB)	Btm (ftKB)	Date
NIOBRARA, ORIGINAL HOLE	A	2	6,808.00	6,816.00	8/6/1987
NIOBRARA, ORIGINAL HOLE	B	5	6,868.00	6,888.00	8/6/1987
CODELL, ORIGINAL HOLE	C	3	6,950.00	6,974.00	8/6/1987
CODELL, ORIGINAL HOLE		60	7,090.00	7,105.00	7/22/2003
CODELL, ORIGINAL HOLE		5	7,092.00	7,102.00	8/6/1987

Stimulations & Treatments

Date	Zone	Primary Job Type
8/25/1987	NIOBRARA-CODELL, ORIGINAL HOLE	DRILLING/COMPLETION - ORIGINAL
Technical Result	Tech Result Details	Tech Result Note

Comment

LIMITED ENTRY FRAC

Well Name: STATE RG36-06

VERTICAL - ORIGINAL HOLE, 6/18/2014 12:17:27 PM

Stimulations & Treatments

Date 7/28/2003	Zone CODELL, ORIGINAL HOLE	Primary Job Type RE-FRAC
Technical Result	Tech Result Details	Tech Result Note
Comment		

Date 4/17/2008	Zone CODELL, ORIGINAL HOLE	Primary Job Type TRI-FRAC
Technical Result Success	Tech Result Details According to Plan	Tech Result Note
Comment (CODELL TRI-FRAC)		

Other In Hole

Run Date	Des	OD (in)	Top (ftKB)	Btm (ftKB)

Logs

Date	Type	Top, MD (ftKB)	Btm, MD (ftKB)
8/2/1987	Cement Bond	5,950.0	7,134.0
8/2/1987	Compensated Density	4,250.0	7,225.0
8/2/1987	Induction	290.0	7,245.0

