

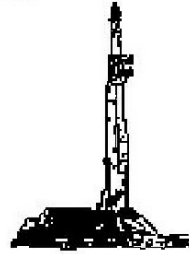
GOOLSBY BROTHERS
and associates, inc.

575 Union Blvd, Suite 208
Lakewood, CO 80228
303-945-2860 Office



Geological Wellsite
Supervision

www.goolsbybrothers.com



Scale 1:240 (5"=100') Imperial
Measured Depth Log

Well Name: NRC 27N-8HZ
Well Id:
Location: Sec. 8 T1N R67W Weld County, CO.
License Number: API: 051233909300 AFE: 2085769 Region: Wattenberg
Spud Date: April 30nd, 2014 Drilling Completed: May 05th, 2014
Surface Coordinates: 350' FSL, 2274' FWL
Lat. 40.0592671, Lon. -104.9075297, Sec.8, T1N R67W
Bottom Hole 460' FNL, 525' FWL
Coordinates: Lat. 40.0715000, Lon. -104.9060993, Sec. 8, T1NR67W
Ground Elevation (ft): 5074' K.B. Elevation (ft): 5099'
Logged Interval (ft): 7400' To: 12717 Total Depth (ft): 12717'
Formation: Niobrara "B" Chalk
Type of Drilling Fluid: LSND (Polymer-Water)
Printed by HORIZONTAL.LOG from WellSight Systems 1-800-447-1534 www.WellSight.com

OPERATOR

Company: Anadarko Petroleum Corporation
Address: Granite Tower - 1099 18th St, Ste 1800
Denver, CO 80202
CO Geologist, Tom Birmingham.

GEOLOGIST

Name: George Bejan, Marek Ciesnik
Company: Goolsby Brothers & Assoc. (GBA), Inc. (www.goolsbybrothers.com)
Address: 575 Union Blvd.
Suite 208,
Lakewood CO. 80228

E-logs

MWD Gamma

Casing

Intermediate casing: 7", 26#, HTC 110 LTC, set at xxx'

Liner: 4 1/2", packer and assembly, 11.5#, HCP 110, LTC & D2X, set at xxxxx'

Comments

Drilling Contractor: H&P 311

Pumps 1 & 2: Gardner Denver PZ 11 6" x 11" (.0914 bbl/stk)

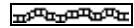
Rig Manager: Jack Truett, James Baggett.

Drillers: Michael Munroe, Christopher Beckstead

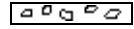
ROCK TYPES



Anhy



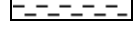
Bent



Brec



Cht



Cyst



Coal



Oil sat.



Congl



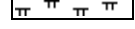
Dol



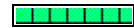
Gyp



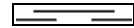
Lmst



Mrlst



Salt



Shale



Shcol



Shgy



Ss



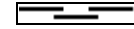
Sltst



Ss



Chalk



Carb sh



Sltly sh

ACCESSORIES

MINERAL

	Anhy
	Arggrn
	Arg
	Bent
	Bit
	Brecfrag
	Calc
	Carb
	Chtdk
	Chtlt
	Dol
	Feldspar
	Ferrpel
	Ferr
	Glau
	Gyp
	Hvymin
	Kaol
	Marl

	Minxl
	Nodule
	Phos
	Pyr
	Salt
	Sandy
	Silt
	Sil
	Sulphur
	Tuff

FOSSIL

	Algae
	Amph
	Belm
	Bioclst
	Brach
	Bryozoa
	Cephal
	Coral

	Crin
	Echin
	Fish
	Foram
	Fossil
	Gastro
	Oolite
	Ostra
	Pelec
	Pellet
	Pisolite
	Plant
	Strom

STRINGER

	Chlkstg
	Anhy
	Arg
	Bent
	Coal

	Dol
	Gyp
	Ls
	Mrst
	Sltstrg
	Ssstrg

TEXTURE

	Boundst
	Chalky
	Cryxln
	Earthy
	Finexln
	Grainst
	Lithogr
	Microxln
	Mudst
	Packst
	Wackest

OTHER SYMBOLS

OIL SHOWS

	Even
	Spotted
	Ques
	Dead
	Vspotty
	near even

POROSITY TYPE

	Earthy
	Fenest
	Fracture
	Inter
	Moldic
	Organic

	Pinpoint
	Vuggy

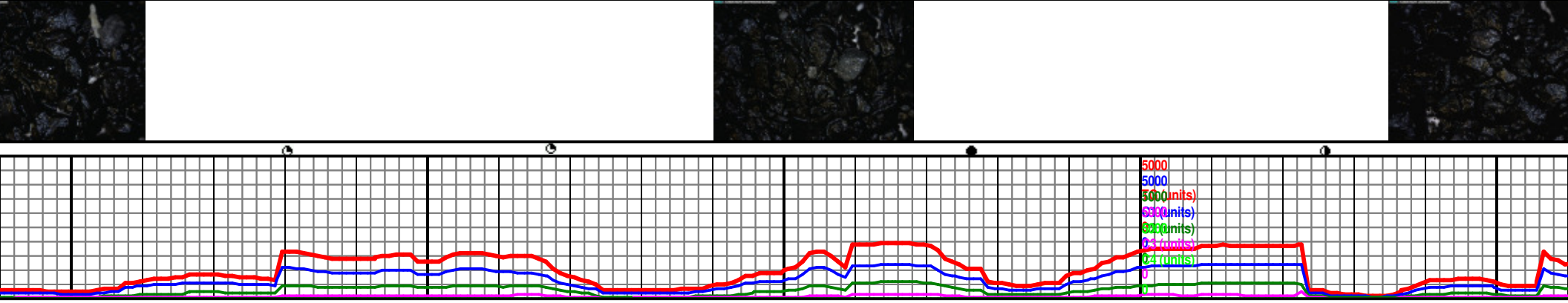
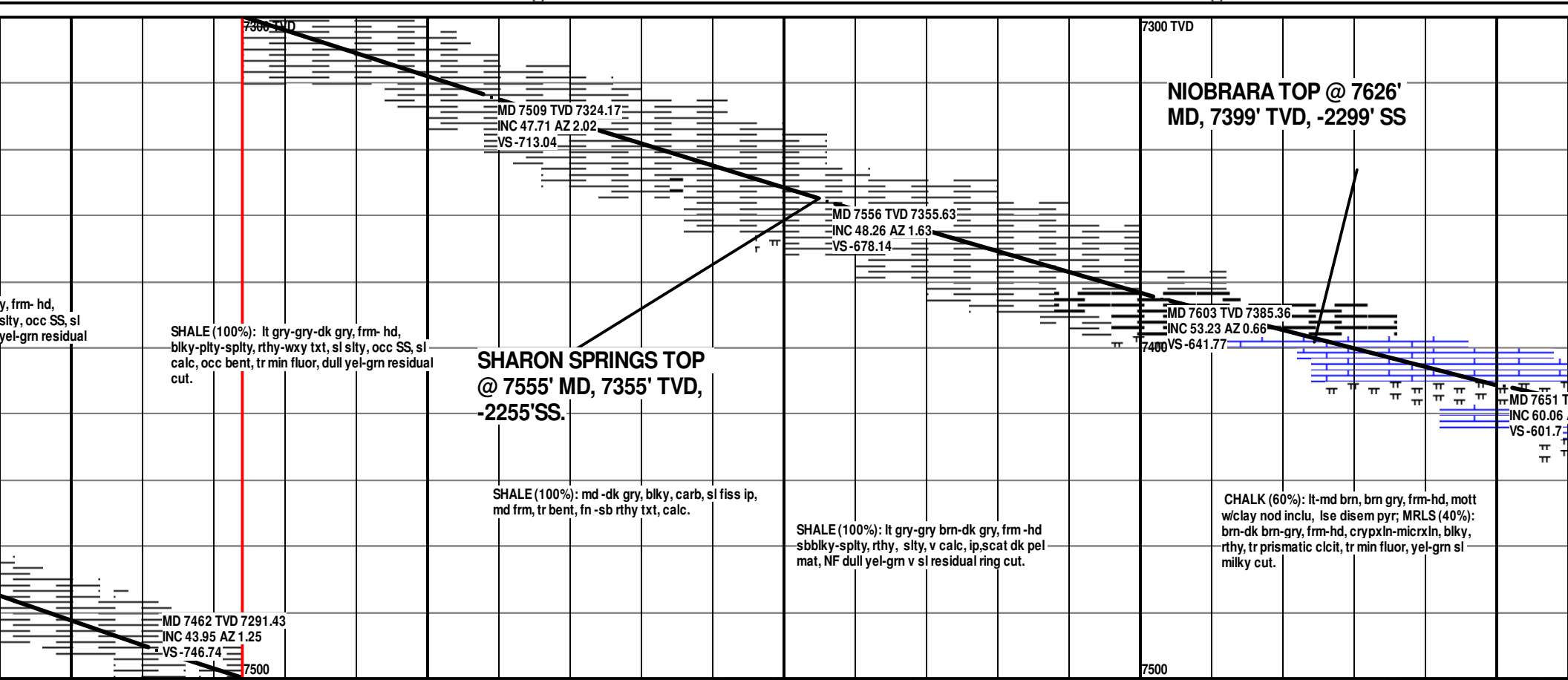
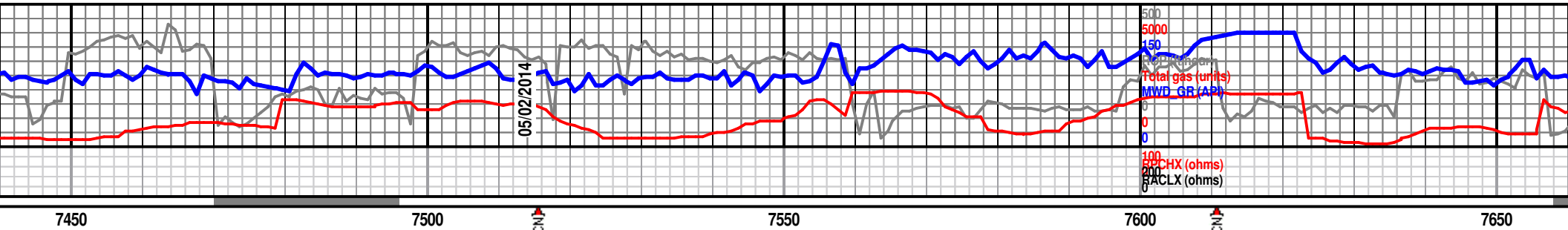
ROUNDING

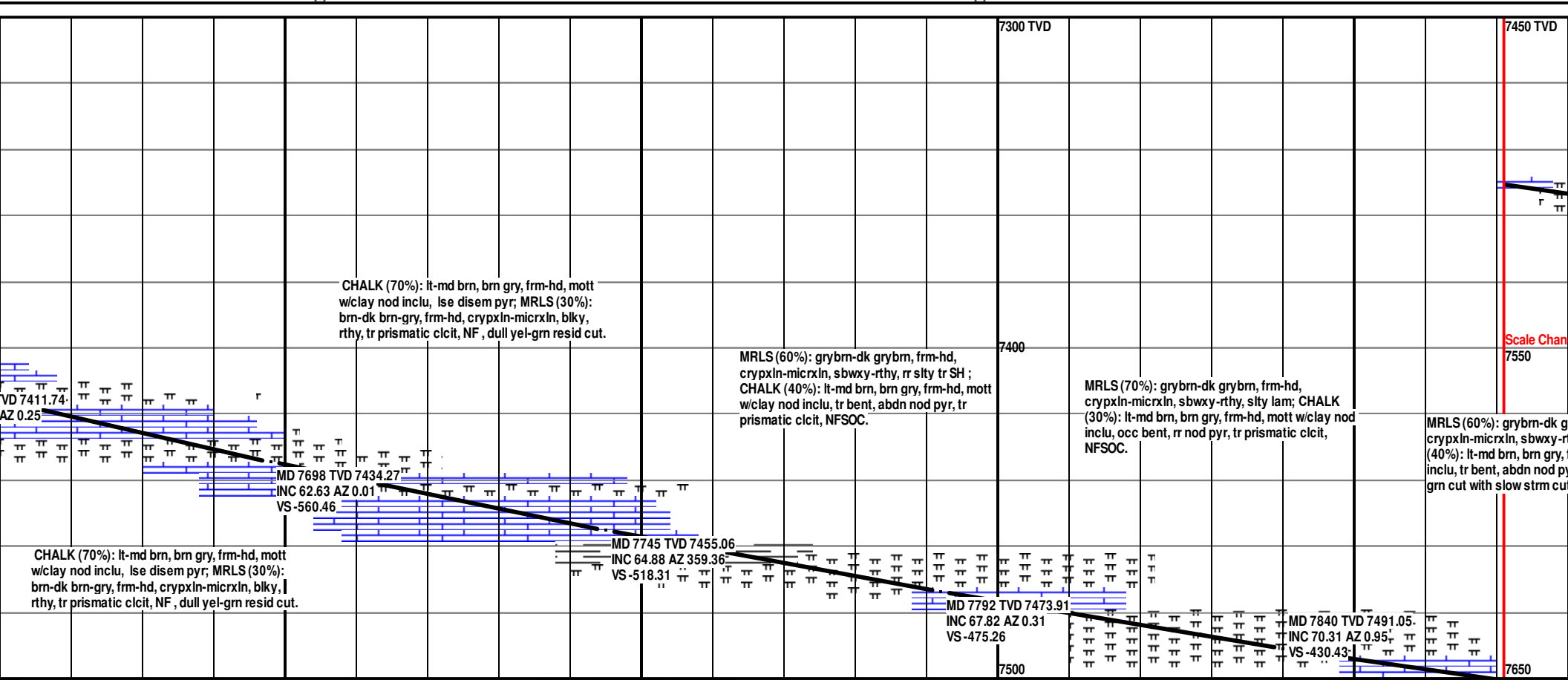
	Rounded
	Subrnd
	Subang

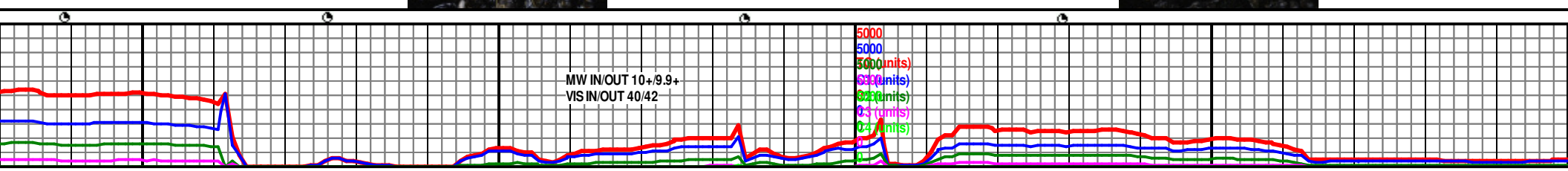
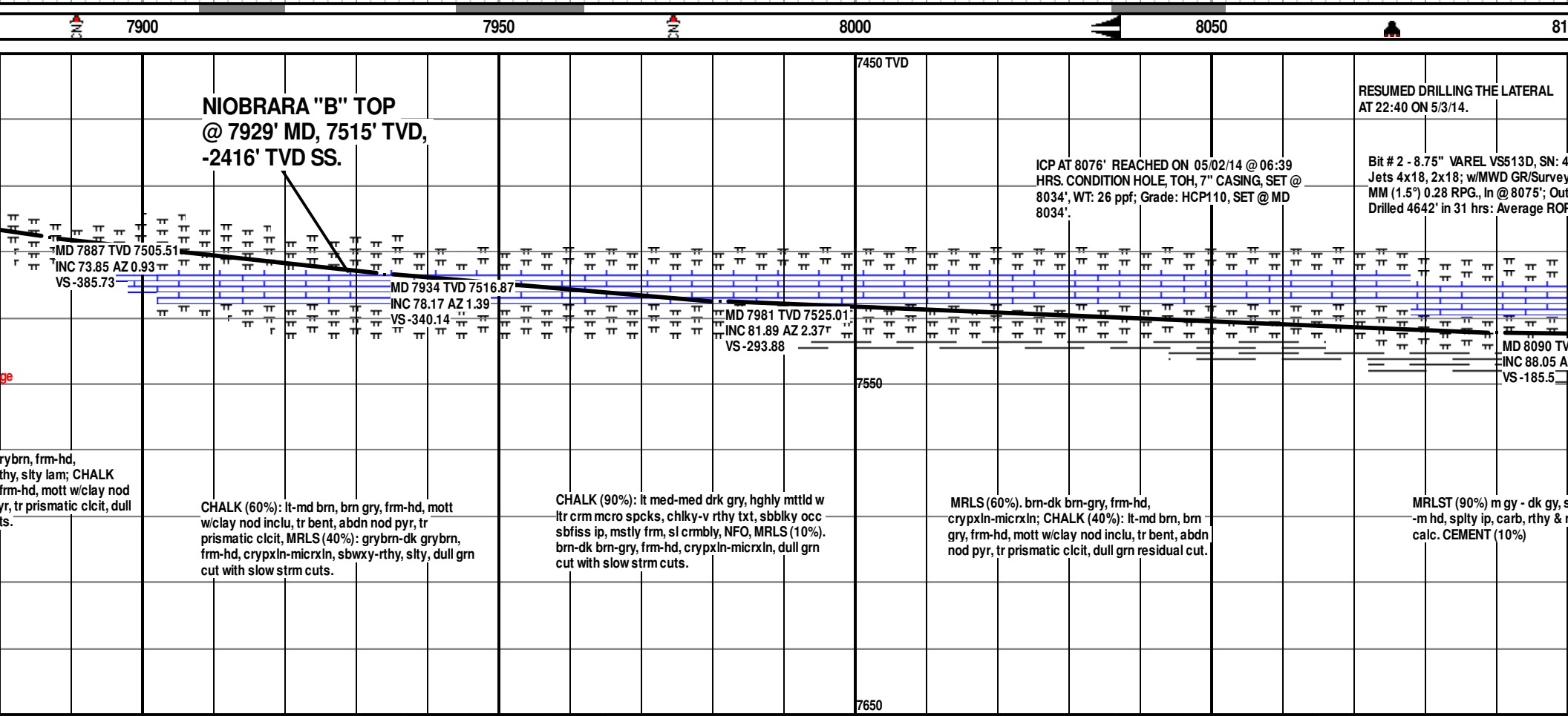
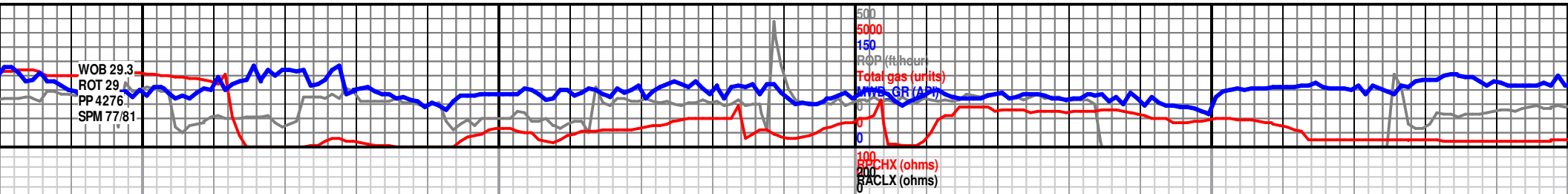
	Angular
--	---------

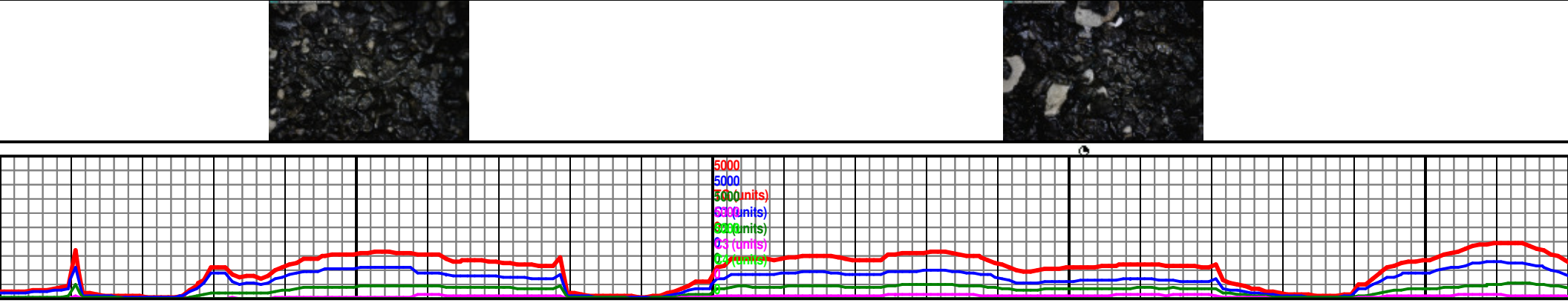
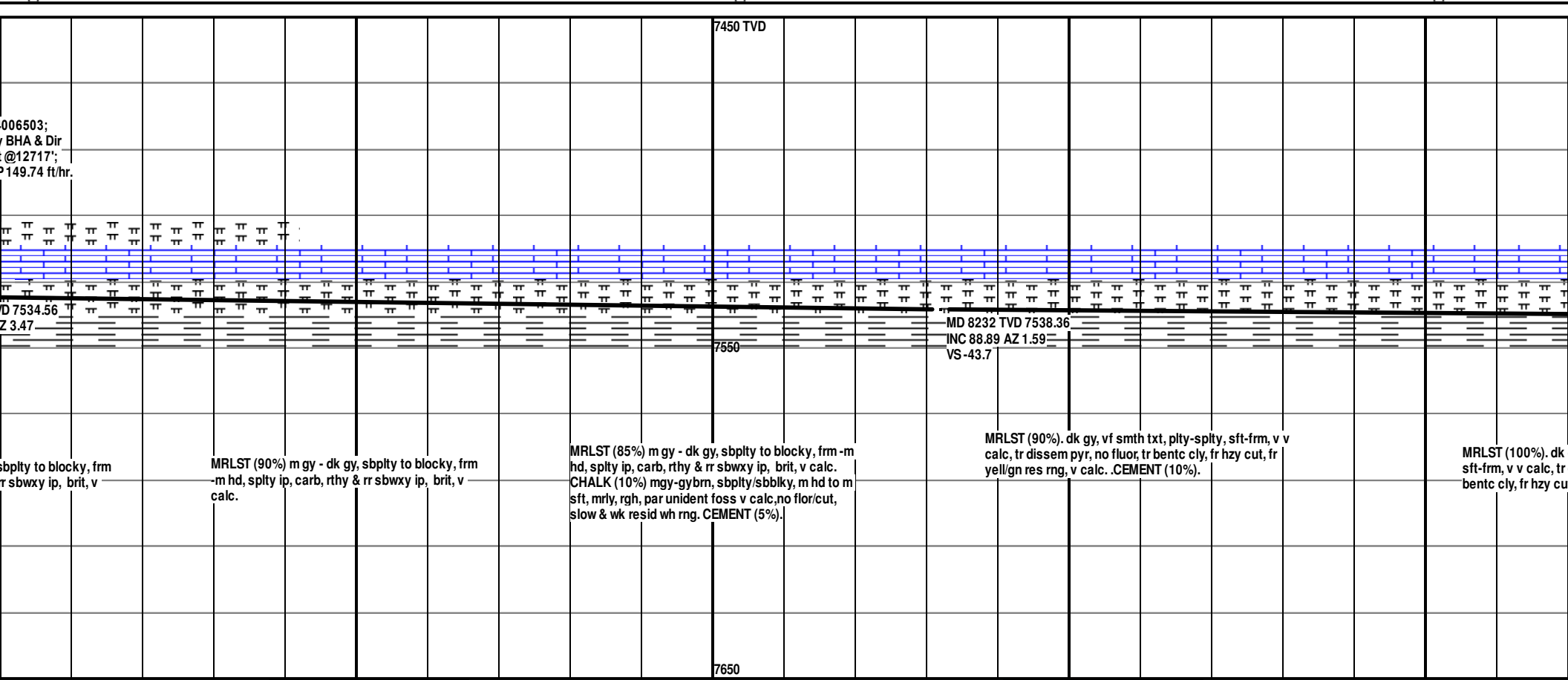
SORTING

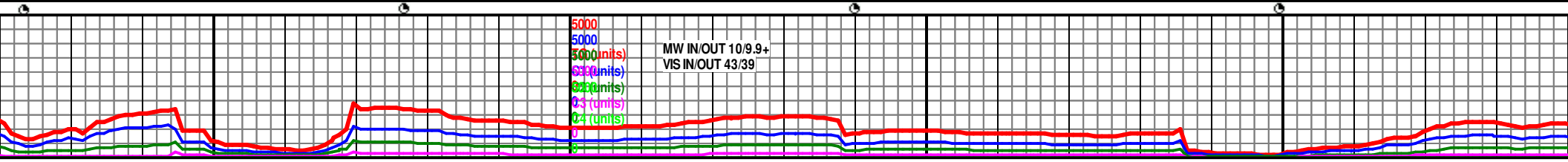
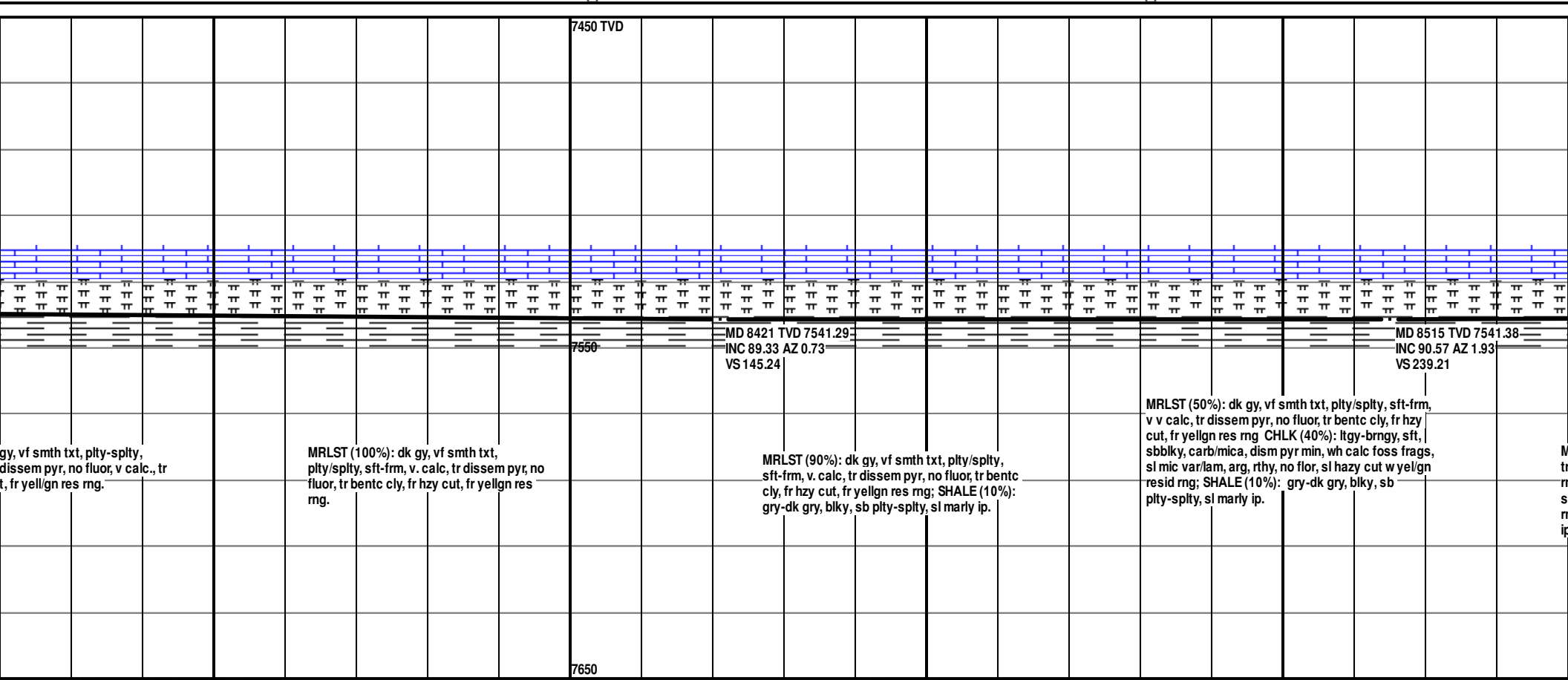
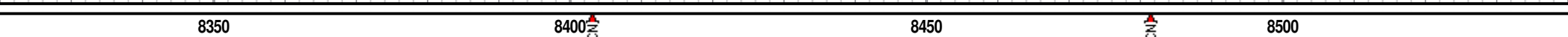
	Well
	Moderate
	Poor

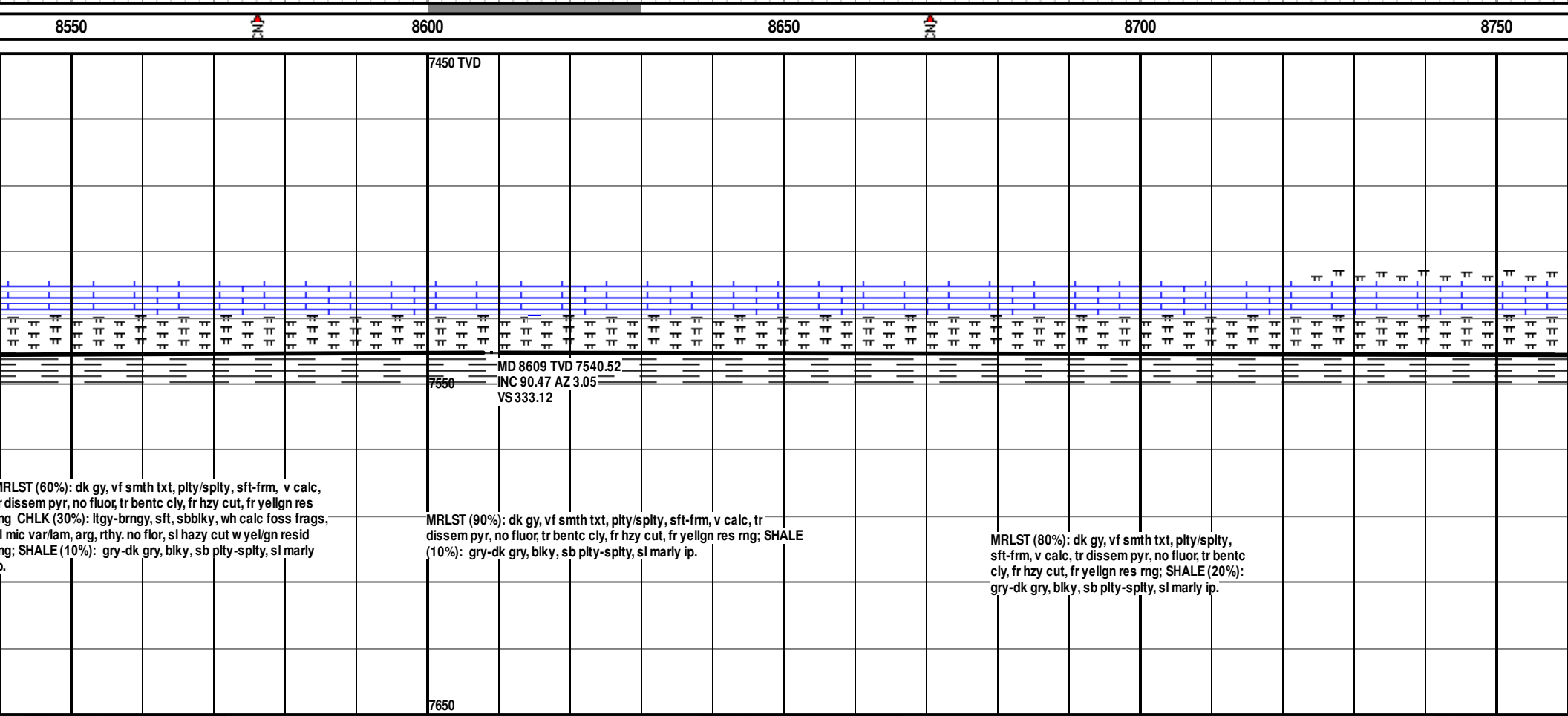
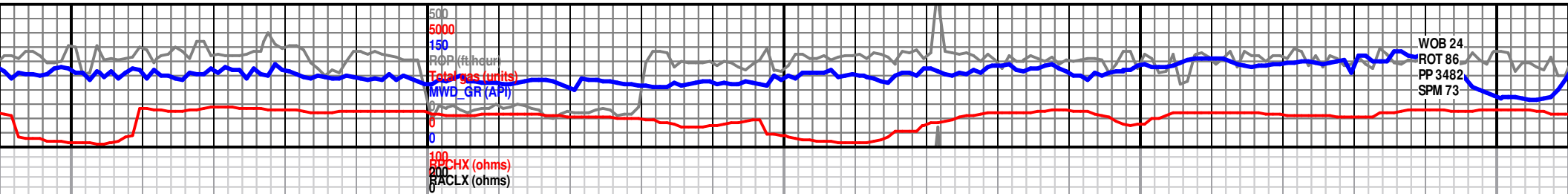








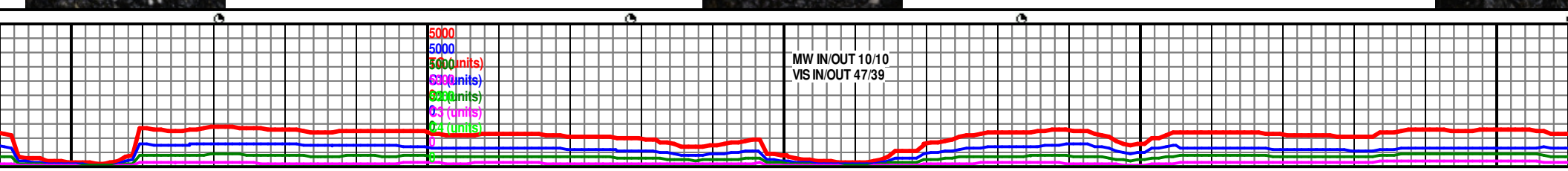
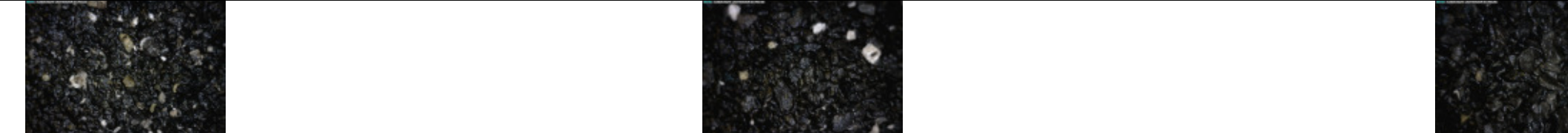


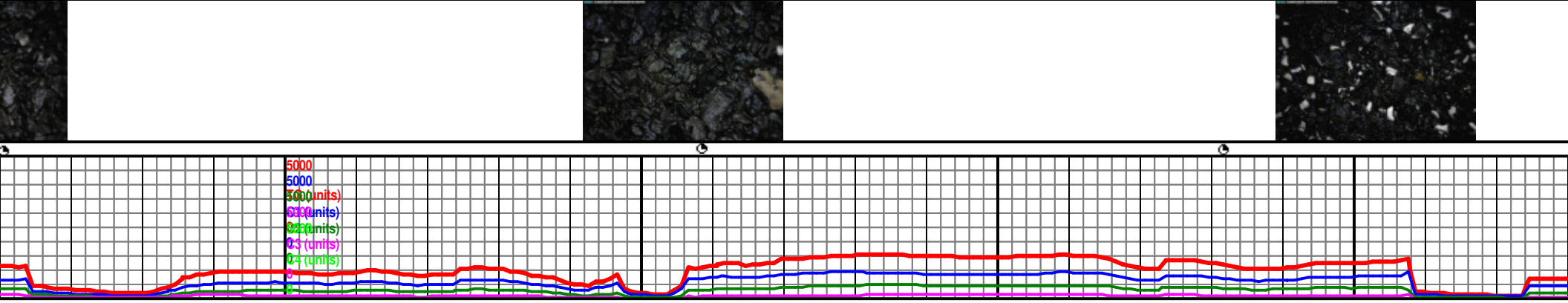
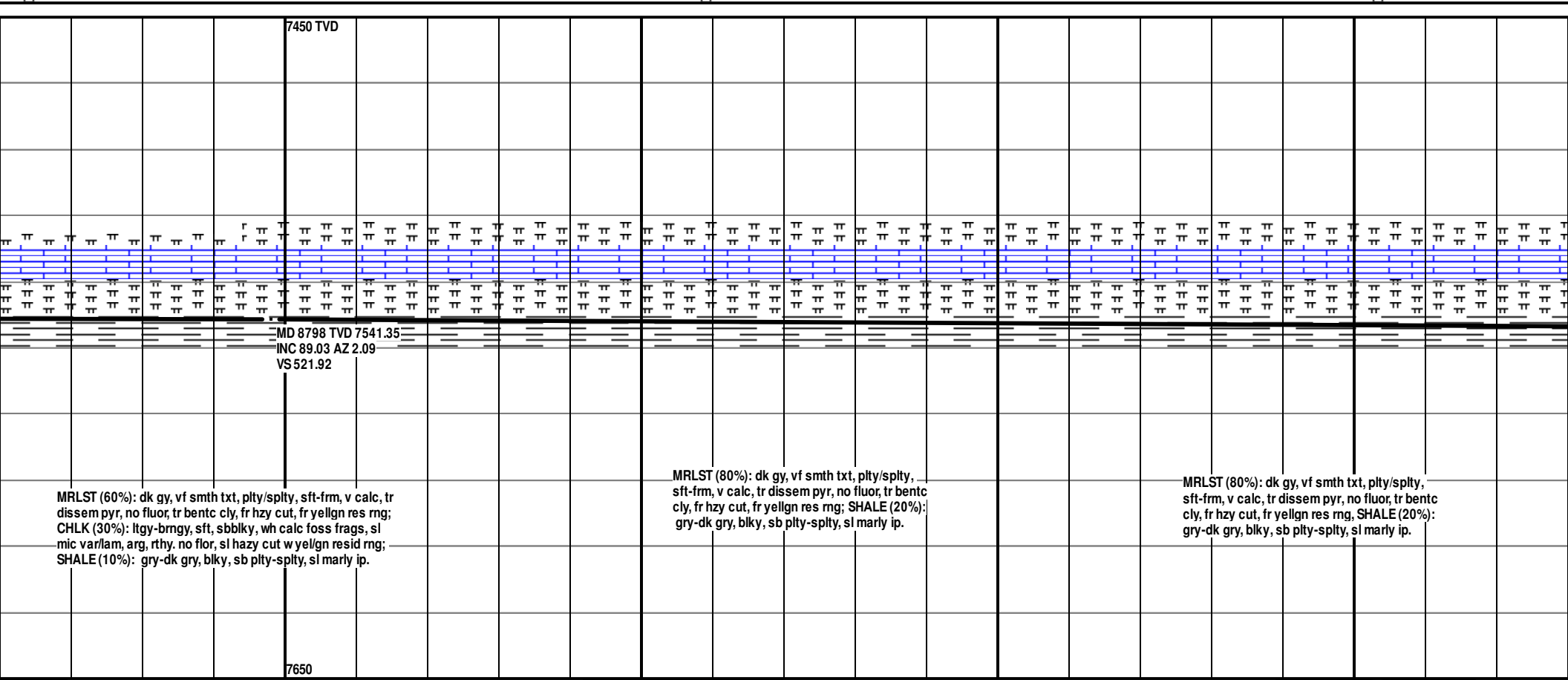


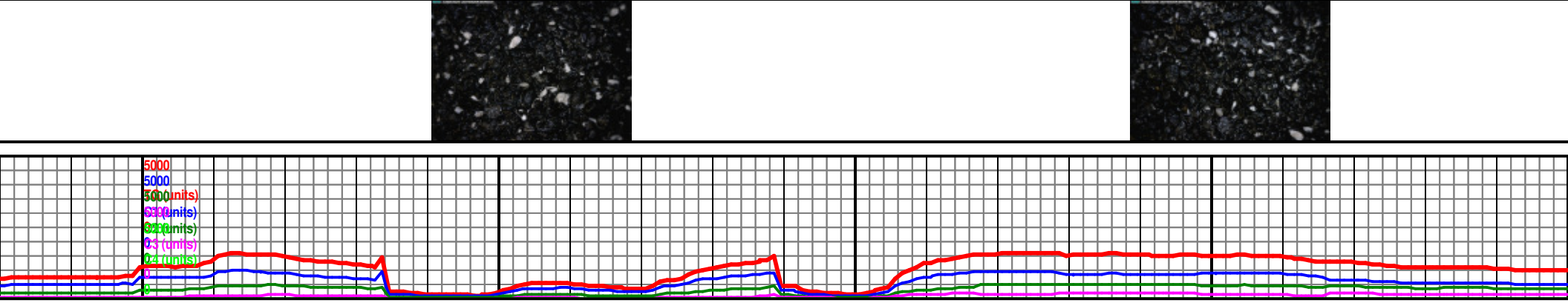
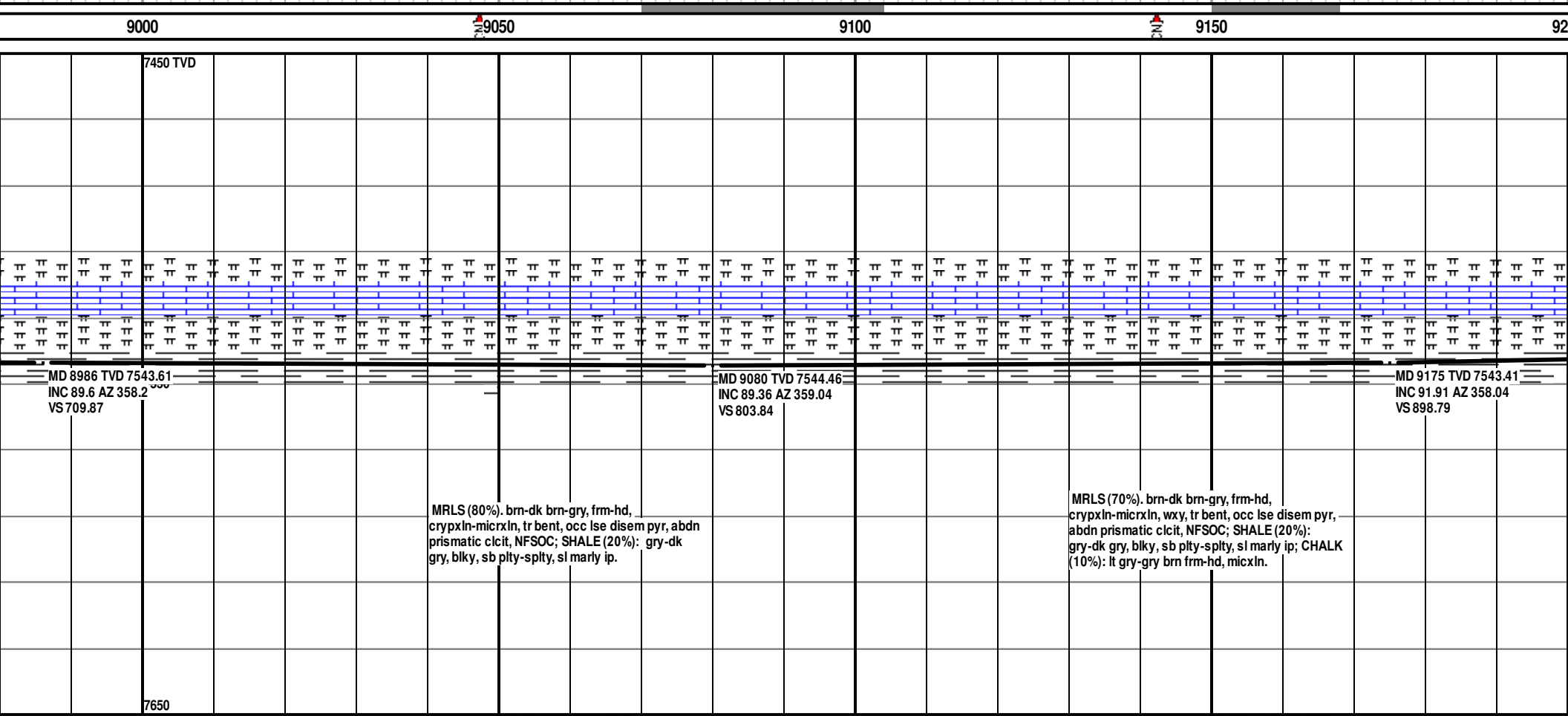
MRLST (60%): dk gy, vf smth txt, plty/spity, sft frm, v calc, tr disse pyr, no fluor, tr bentc cly, fr hzy cut, fr yellgn res mg; CHLK (30%): ltgy-brngy, sft, sbblky, wh calc foss frags, l mic var/lam, arg, rthy, no flor, sl hazy cut w yel/gn resid mg; SHALE (10%): gry-dk gry, blkly, sb plty-splty, sl marly ip.

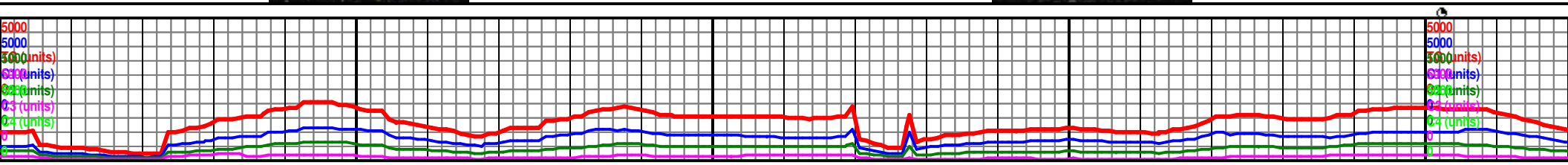
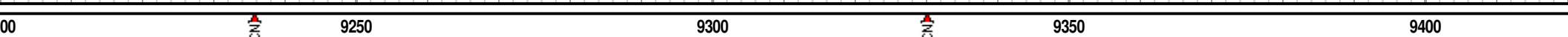
MRLST (90%): dk gy, vf smth txt, plty/spity, sft frm, v calc, tr disse pyr, no fluor, tr bentc cly, fr hzy cut, fr yellgn res mg; SHALE (10%): gry-dk gry, blkly, sb plty-splty, sl marly ip.

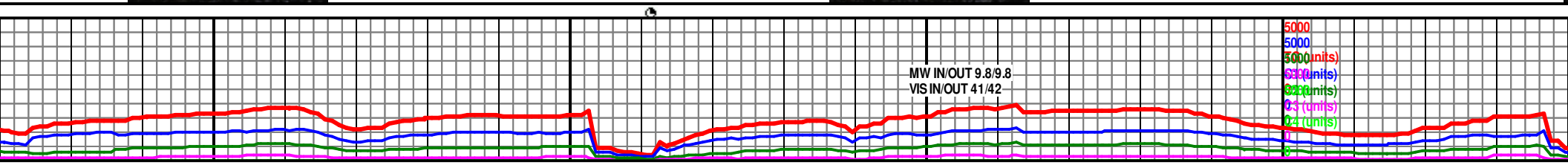
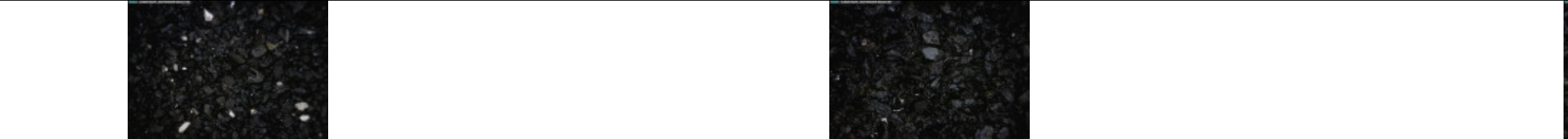
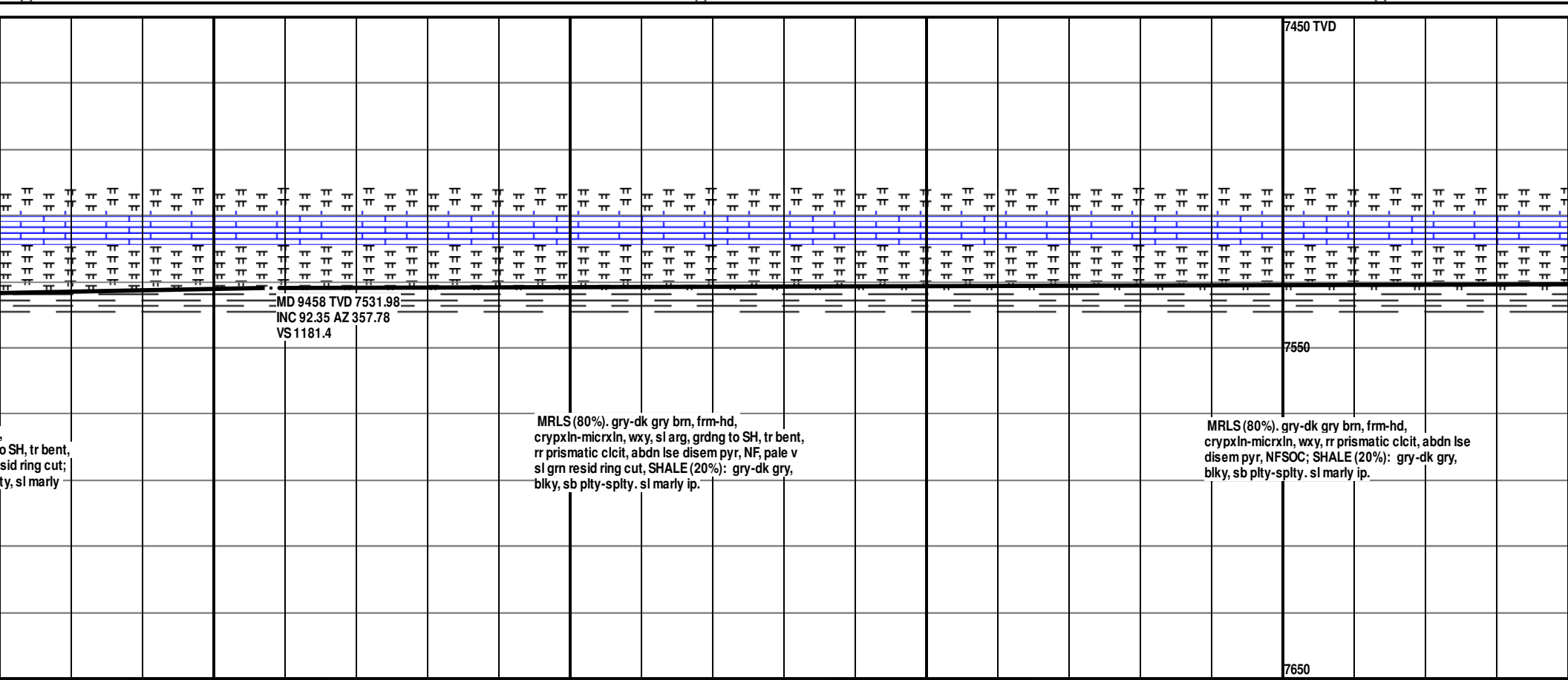
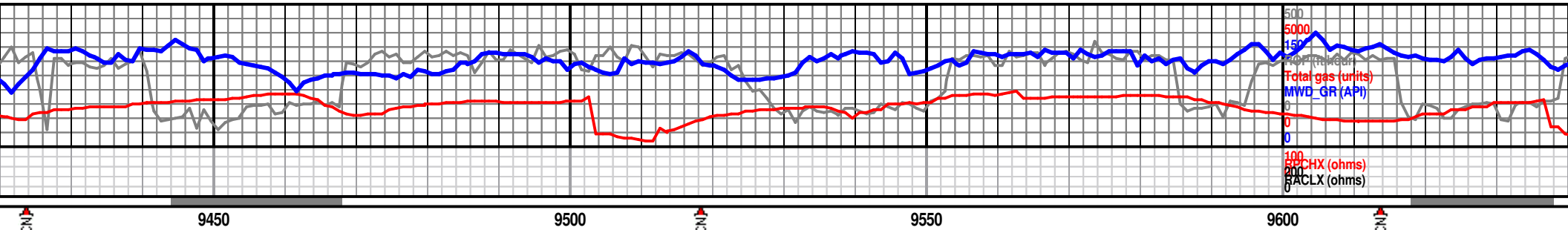
MRLST (80%): dk gy, vf smth txt, plty/spity, sft frm, v calc, tr disse pyr, no fluor, tr bentc cly, fr hzy cut, fr yellgn res mg; SHALE (20%): gry-dk gry, blkly, sb plty-splty, sl marly ip.

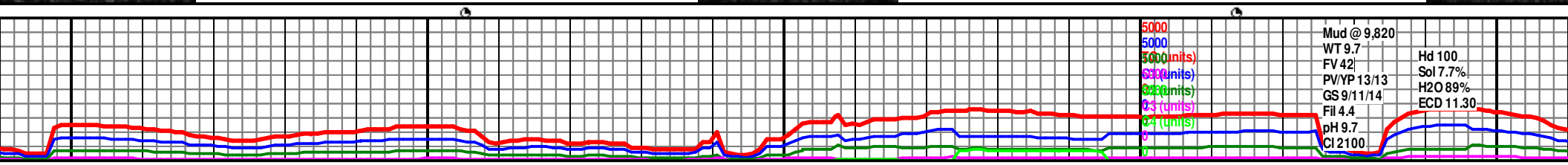
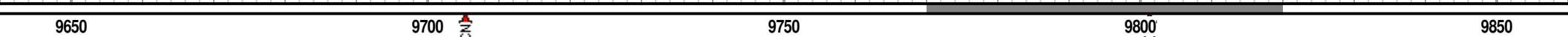


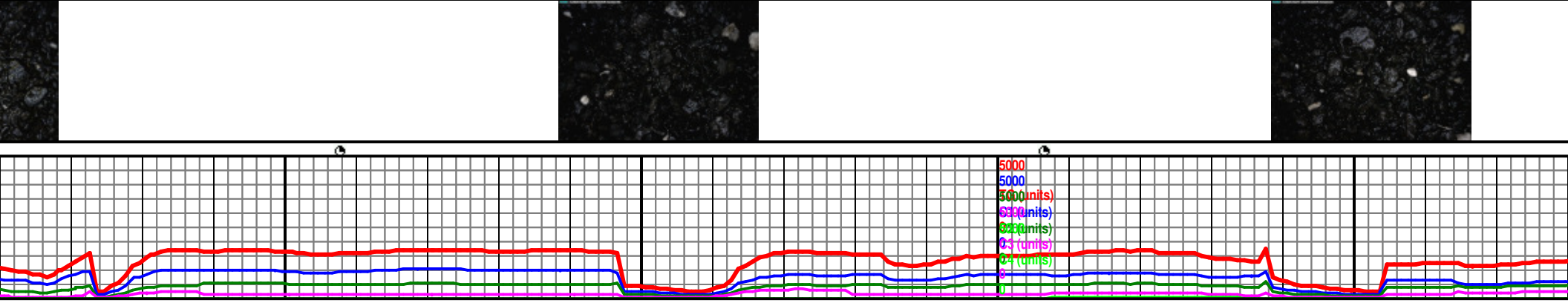
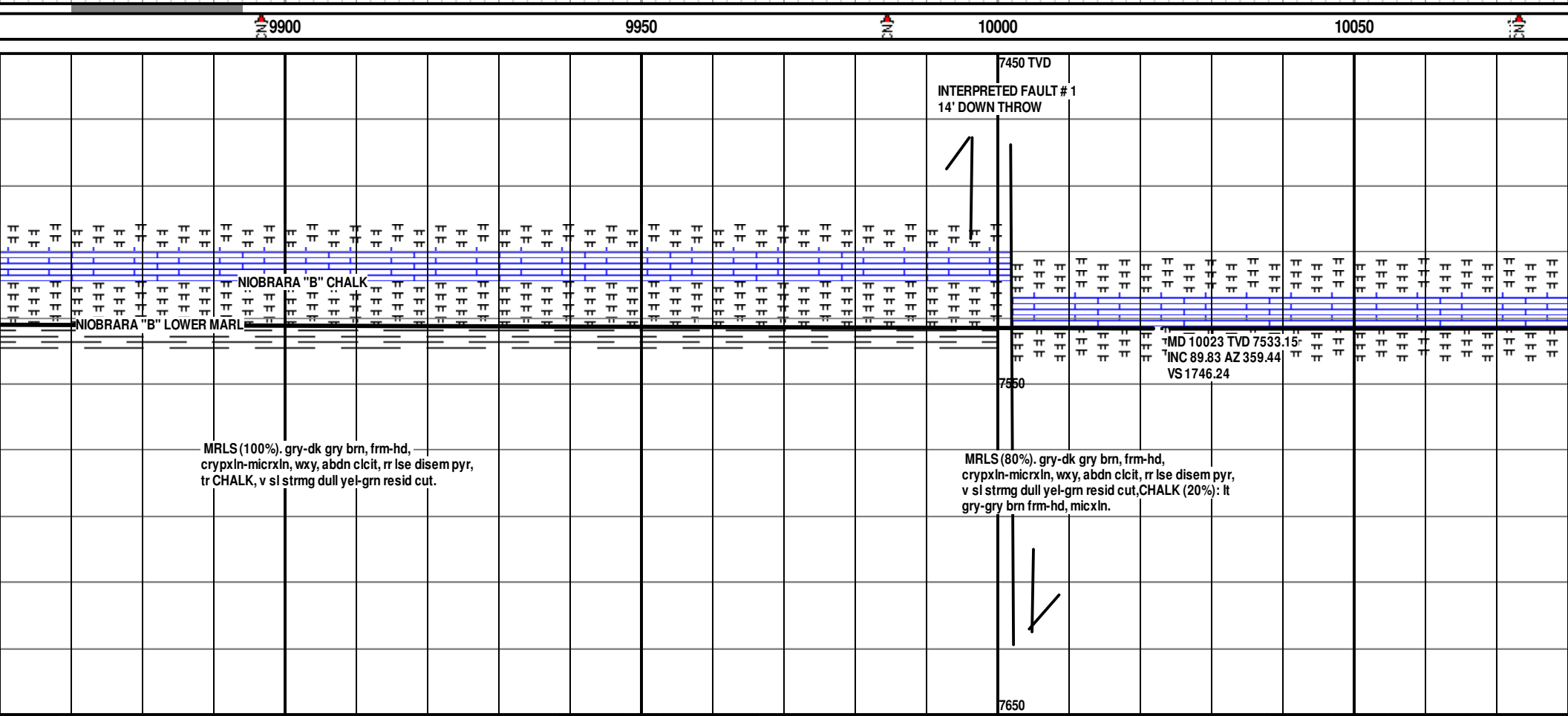
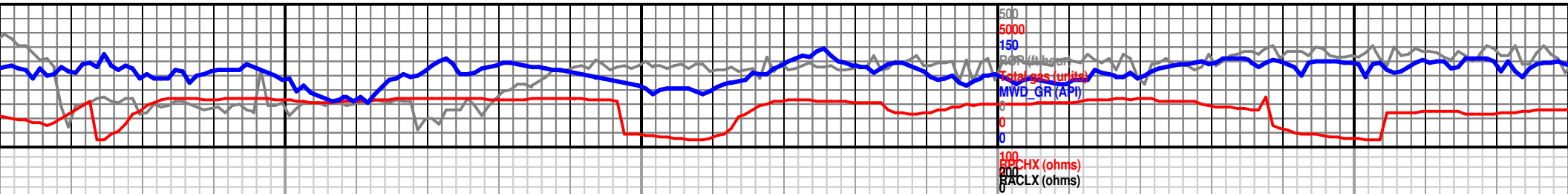


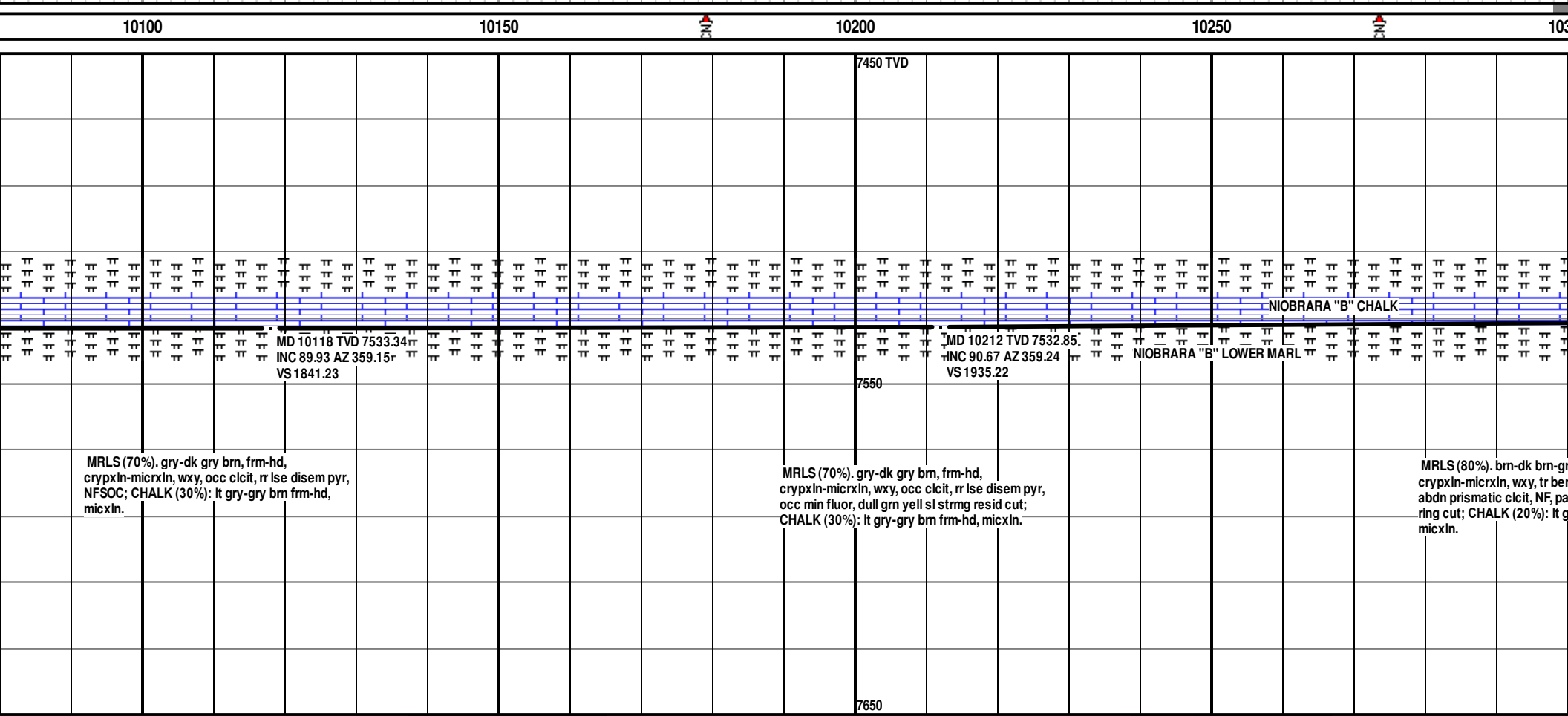


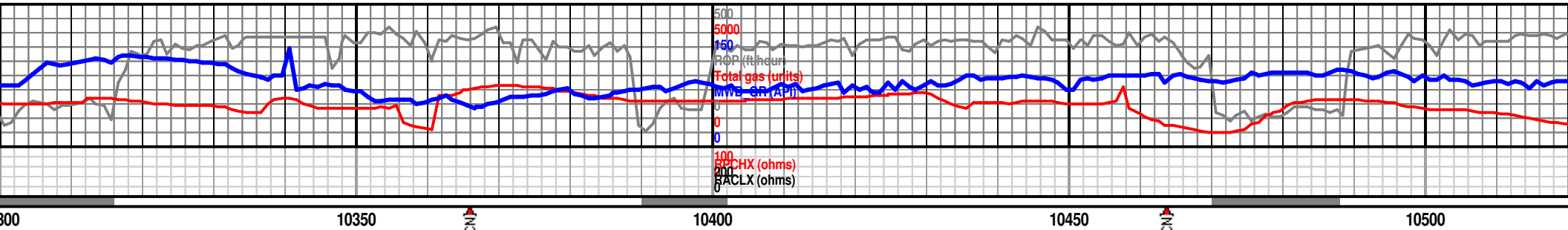




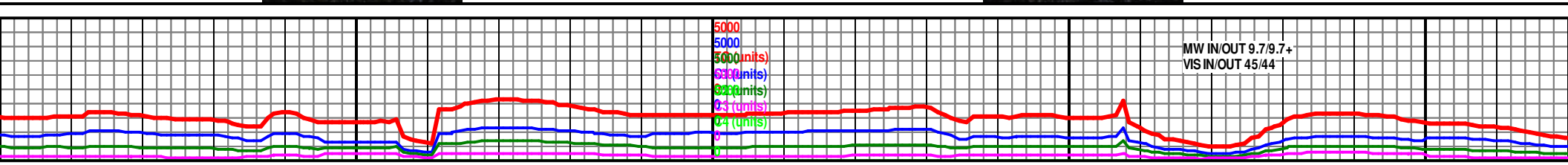


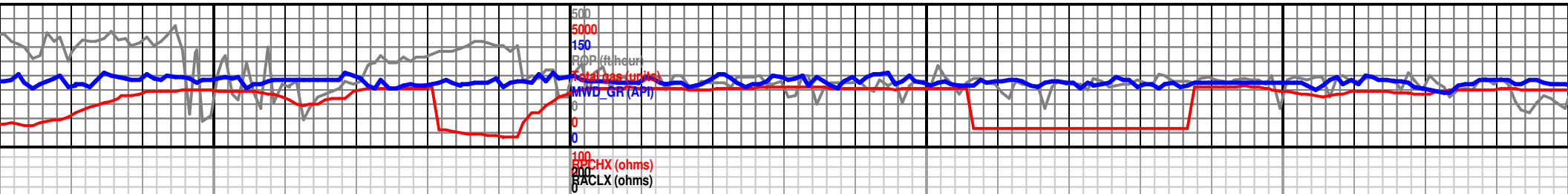




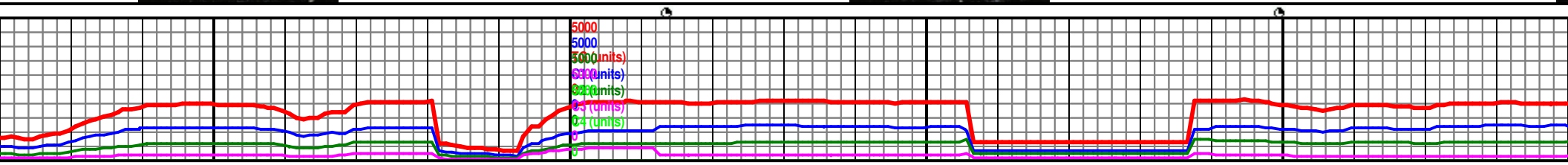
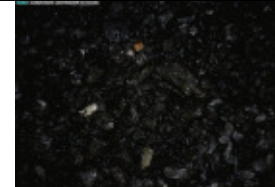
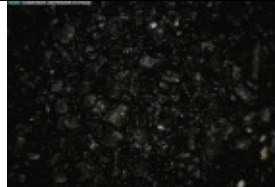


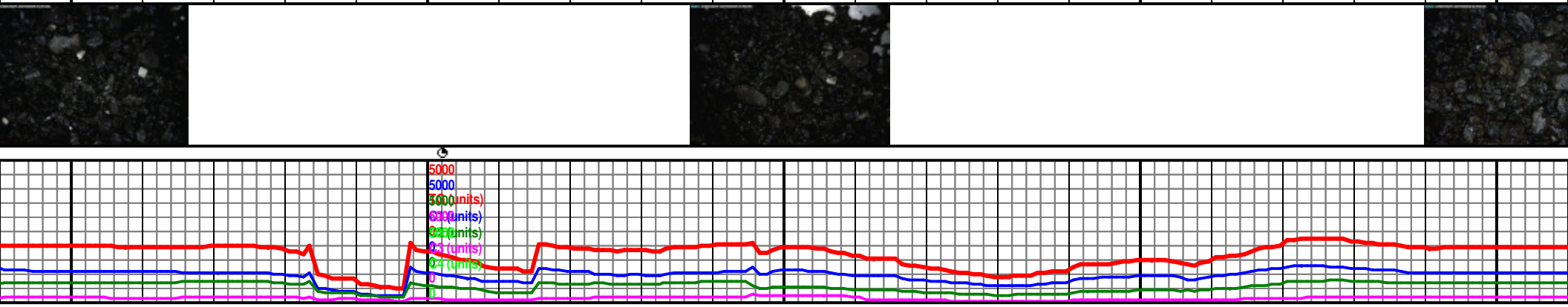
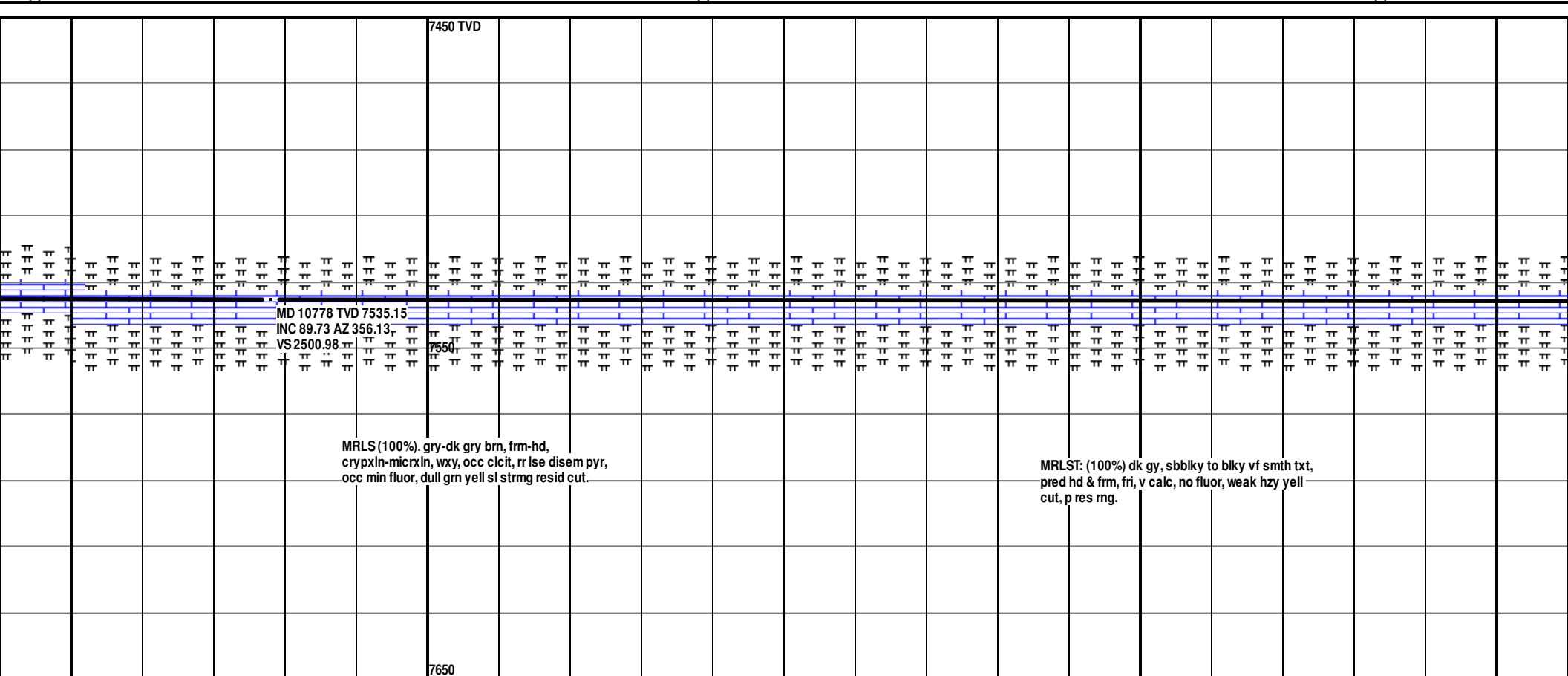
										7450 TVD																																																											
MD 10306 TVD 7531.64 INC 90.81 AZ 0.49 VS 2029.21																																																												MD 10495 TVD 7532.53 INC 88.66 AZ 359.34 VS 2218.19									
y, frm-hd, nt, occ lse disem pyr, le sl strmg gm resid ry-gry brn frm-hd,																																																												MRLS (80%). gry-dk gry brn, frm-hd, crypxln-micrxln, wxy, occ clcit, rr lse c NFSOC; CHALK (20%): lt gry-gry brn f micxln.									

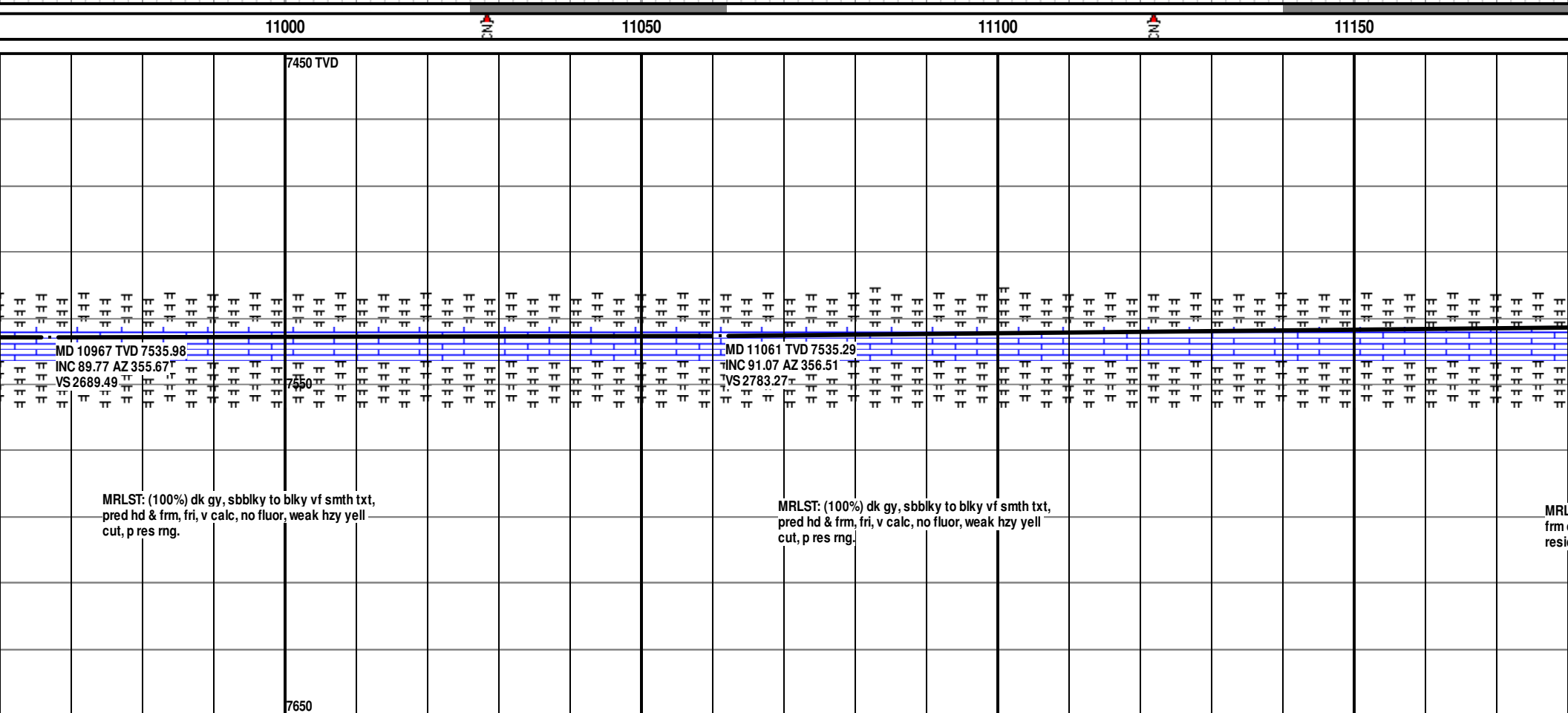


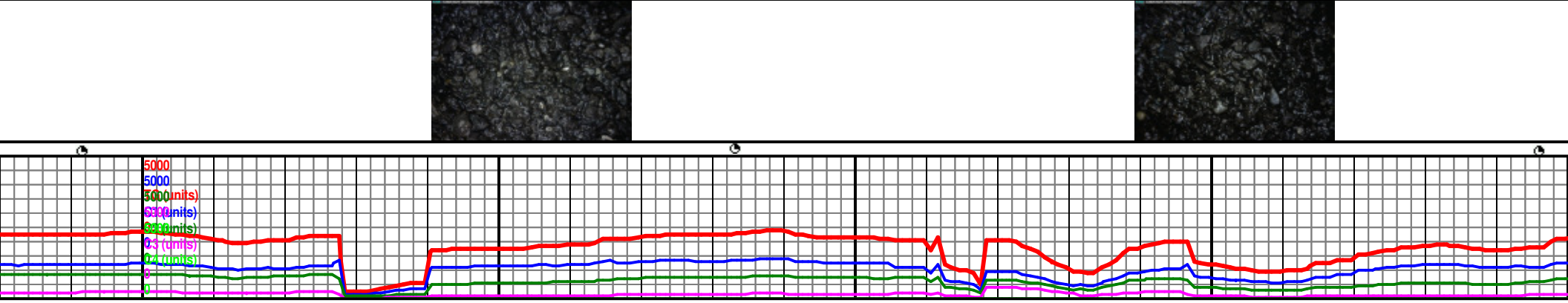
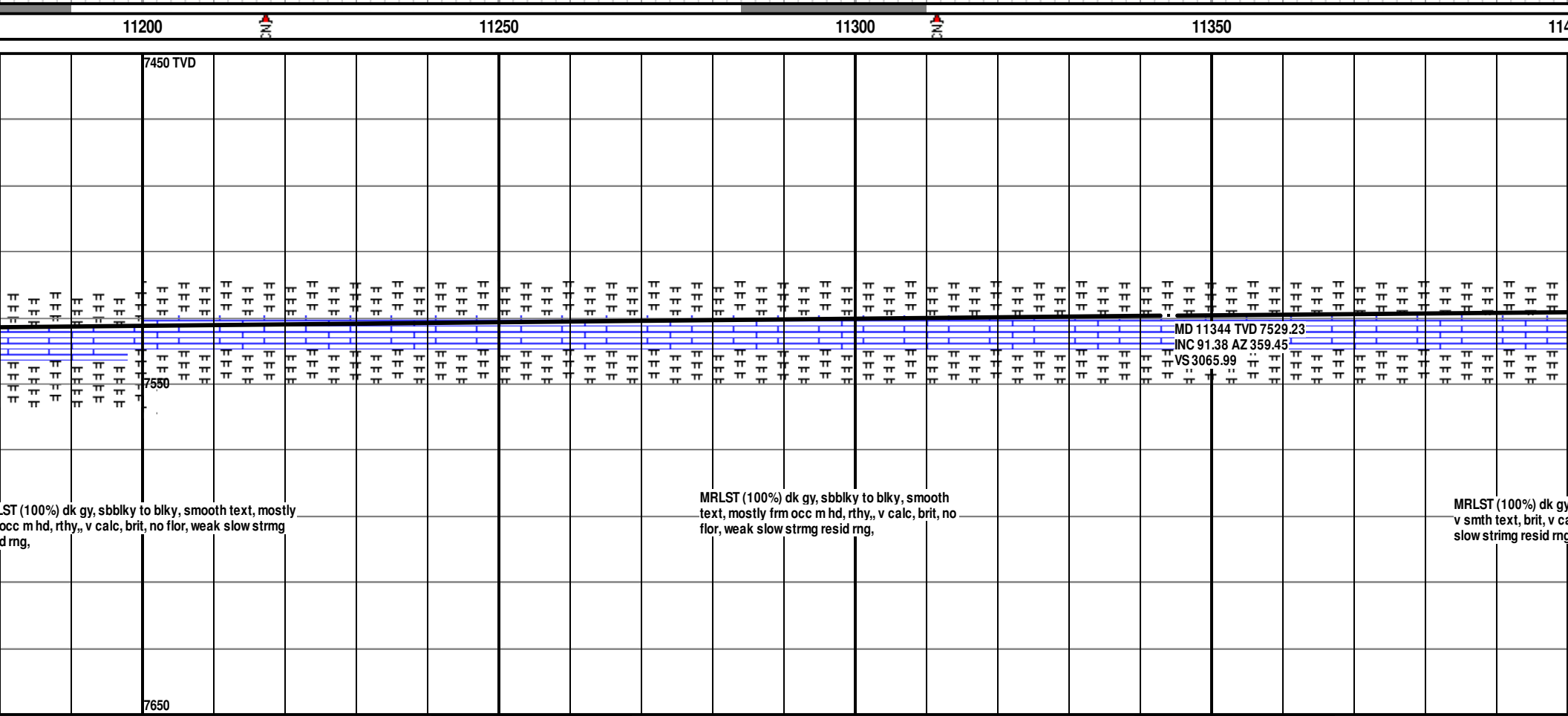


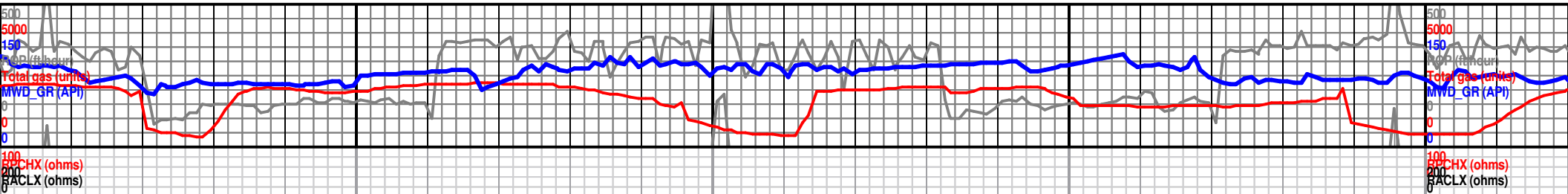
10550	10600	10650	10700
7450 TVD			
MD 10589 TVD 7533.99			
INC 89.56 AZ 358.96			
VS 2312.17			
7550			
disem pyr, frm-hd,			
MRLS (90%): gry-dk gry brn, frm-hd, crypxln-micrxln, wxy, occ clcit, rr lse disem pyr, occ min fluor, dull gm yell sl strmg resid cut; CHALK (10%): lt gry-gry brn frm-hd, micxln.			
7650			
MRLS (90%): gry-dk gry brn, frm-hd, crypxln-micrxln, wxy, occ clcit, rr lse disem pyr, occ min fluor, dull gm yell sl strmg resid cut; CHALK (10%): lt gry-gry brn frm-hd, micxln.			



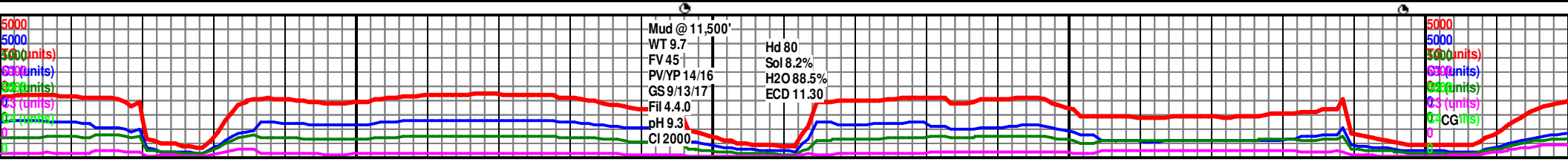


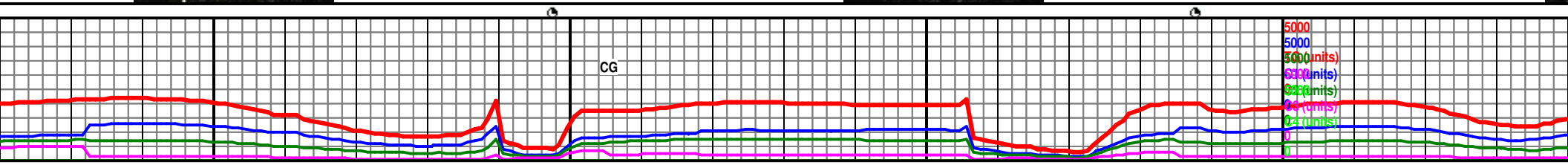
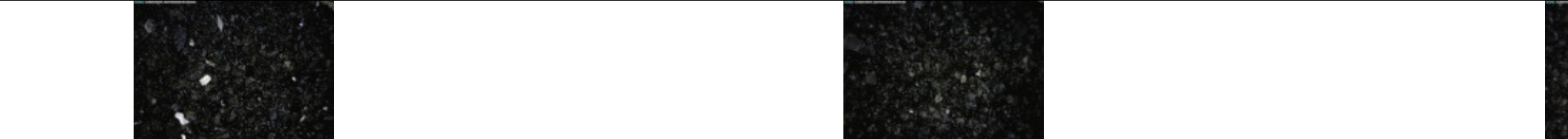
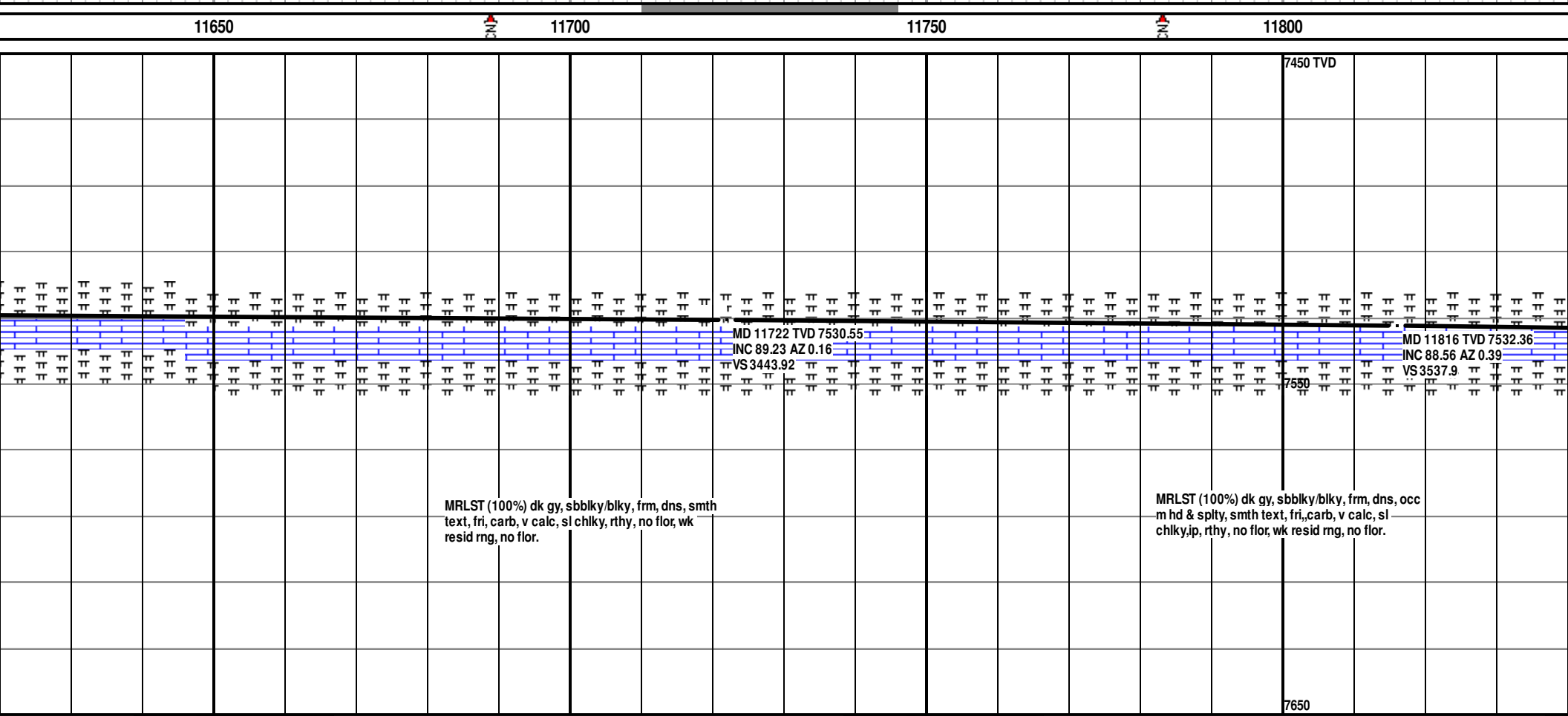
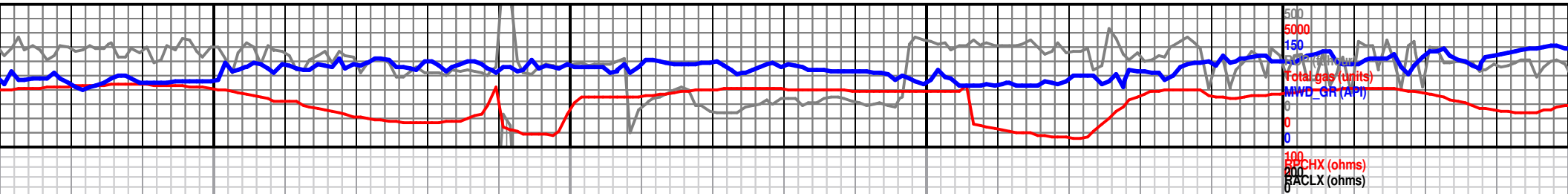


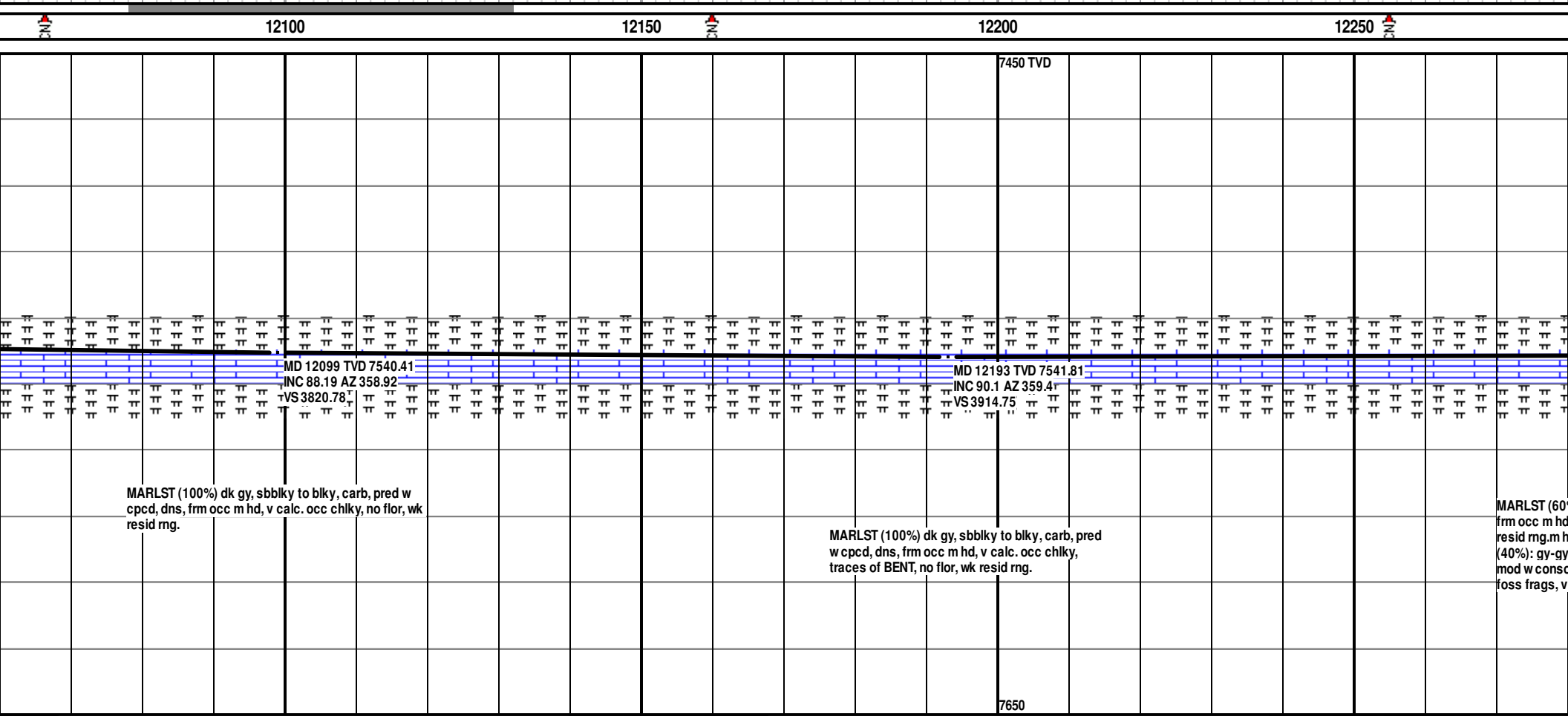
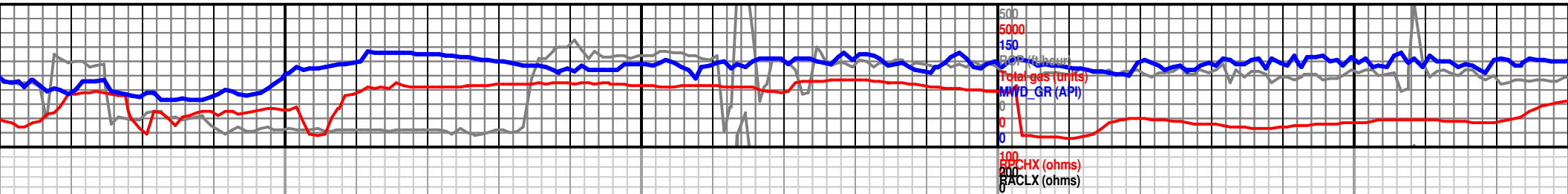




11400										11500										11550										11600									
7450 TVD																														7450 TVD									
MD 11438 TVD 7527.77										MD 11533 TVD 7528.05																													
INC 90.4 AZ 1.03										INC 89.26 AZ 1.24																													
VS 3159.98										VS 3254.96																													
7550																														7550									
sbbkly/blky, pred frm, dns, calc, sl chiky, rthy, no flor,										MRLST (100%) dk gy, sbbkly/blky, frm, dns, smth text, fri, carb, v calc, sl chiky, rthy, no flor, wk resid rng, no flor.																				MRLST (100%) dk gy, sbbkly/blky, frm, dns, smth text, fri, carb, v calc, sl chiky, rthy, no flor, wk resid rng, no flor.									
7650																														7650									



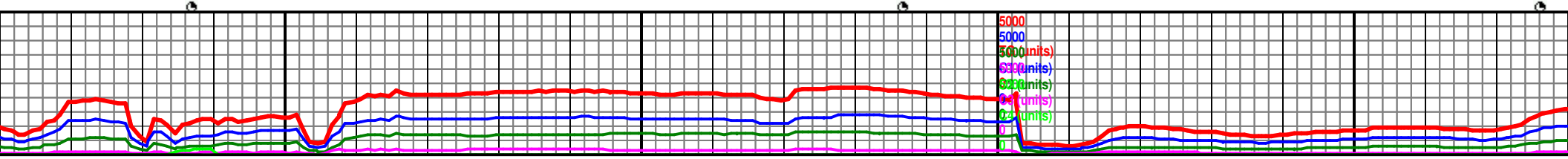
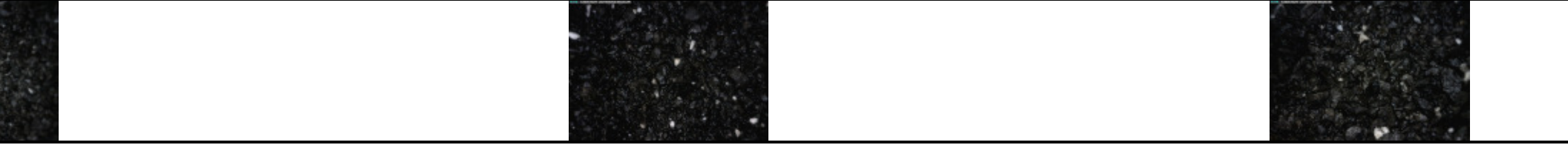


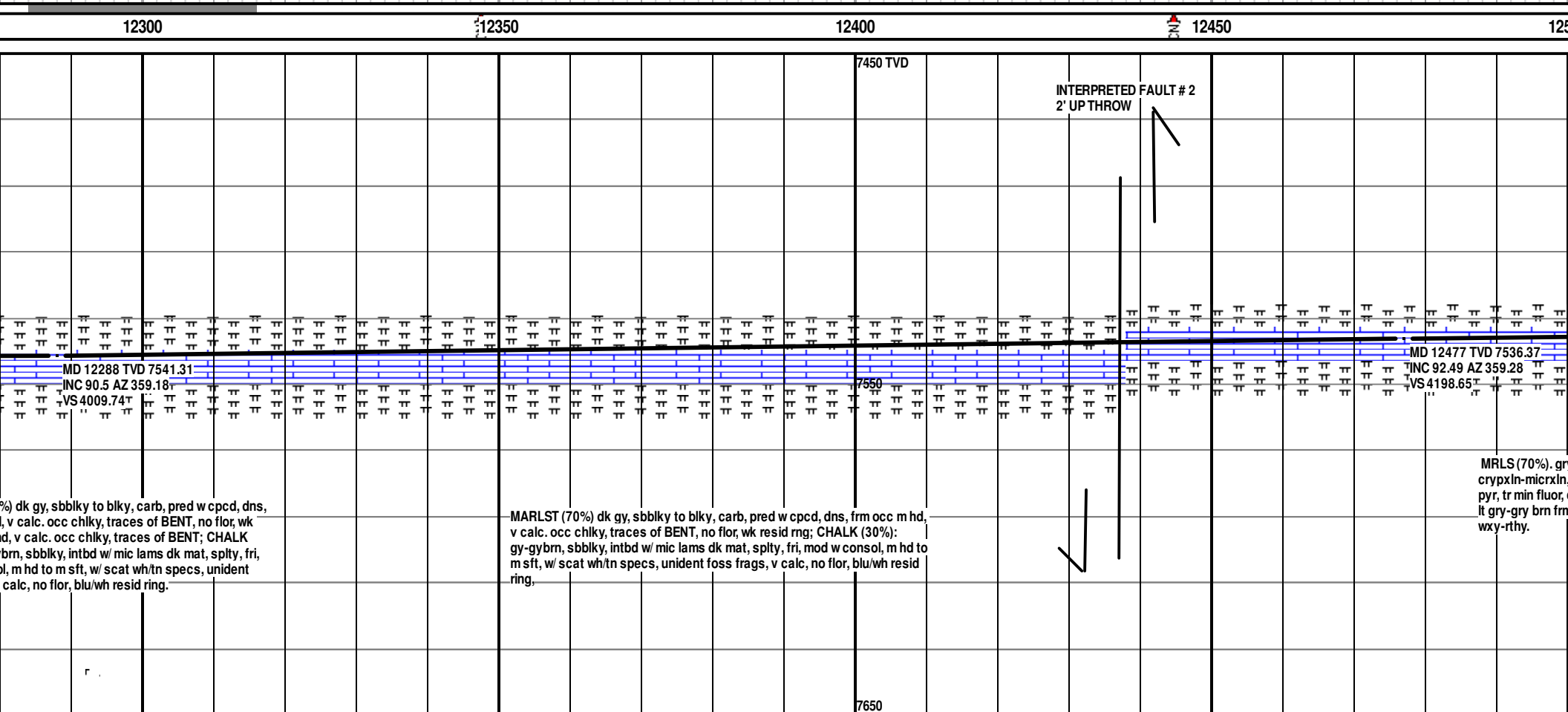


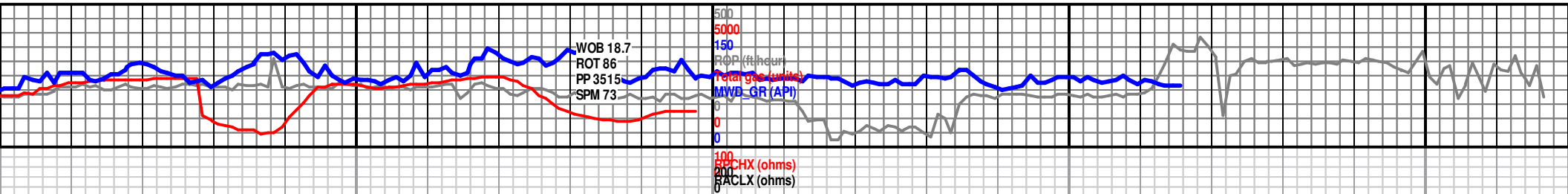
MARLST (100%) dk gy, sbblky to blk, carb, pred w cpcd, dns, frm occ m hd, v calc. occ chlky, no flr, wk resid rng.

MARLST (100%) dk gy, sbblky to blk, carb, pred w cpcd, dns, frm occ m hd, v calc. occ chlky, traces of BENT, no flr, wk resid rng.

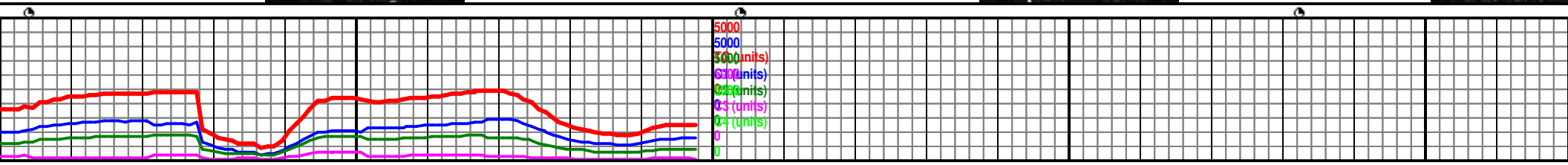
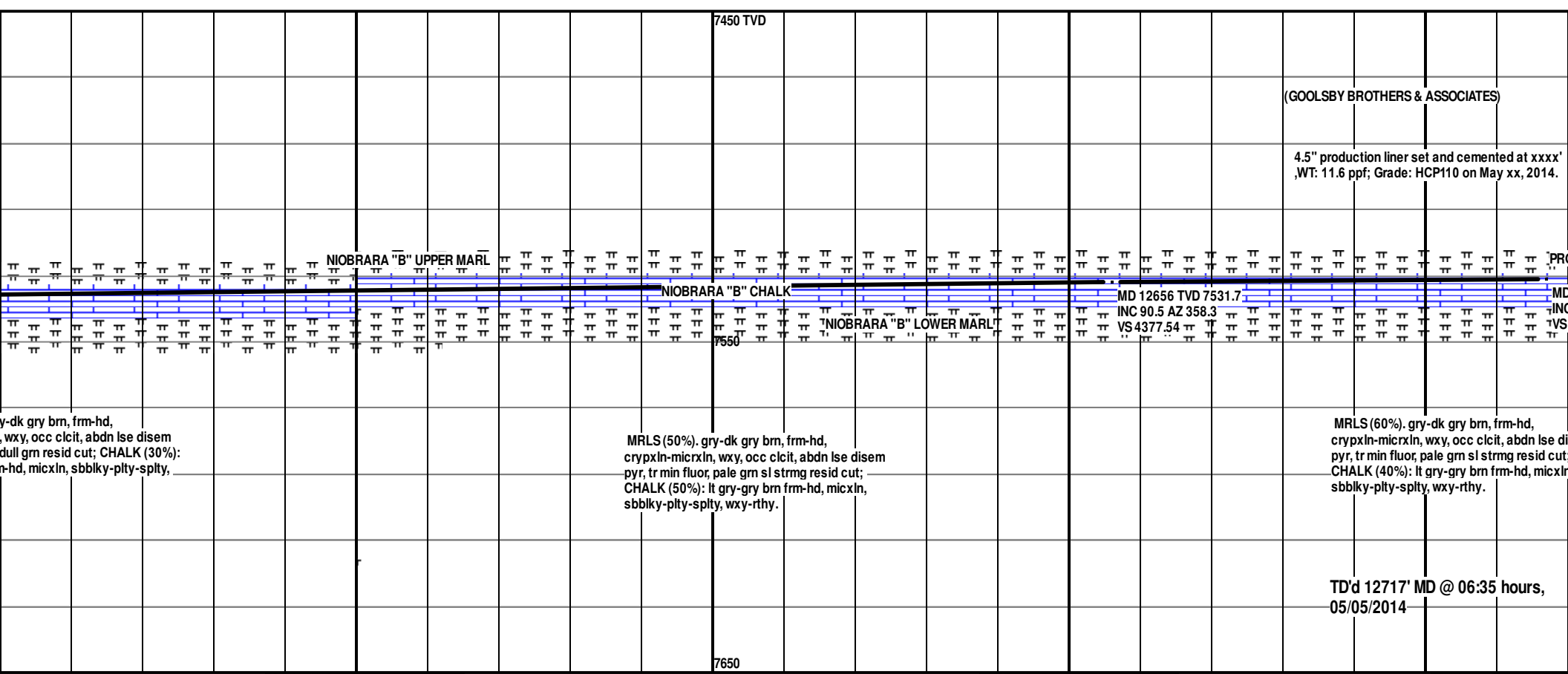
MARLST (60%
frm occ m hd
resid rng. m h
(40%): gy-gy
mod w consc
foss frags, v







12500 12550 12600 12650 12700



--	--

12750

128

[illegible]

sem