

**ANADARKO PETROLEUM CORP - EBUS  
DO NOT MAIL - PO BOX 4995  
THE WOODLANDS, Texas**

SEKICH STATE 9C-17 HZ

**Majors 29**

## **Post Job Summary** **Cement Surface Casing**

Date Prepared: 3/31/2014  
Version: 1

Service Supervisor: PICKELL, CHRISTOPHER

Submitted by: PRUDHOMME, JOSHUA

**HALLIBURTON**

## ***Pumping Schedule***

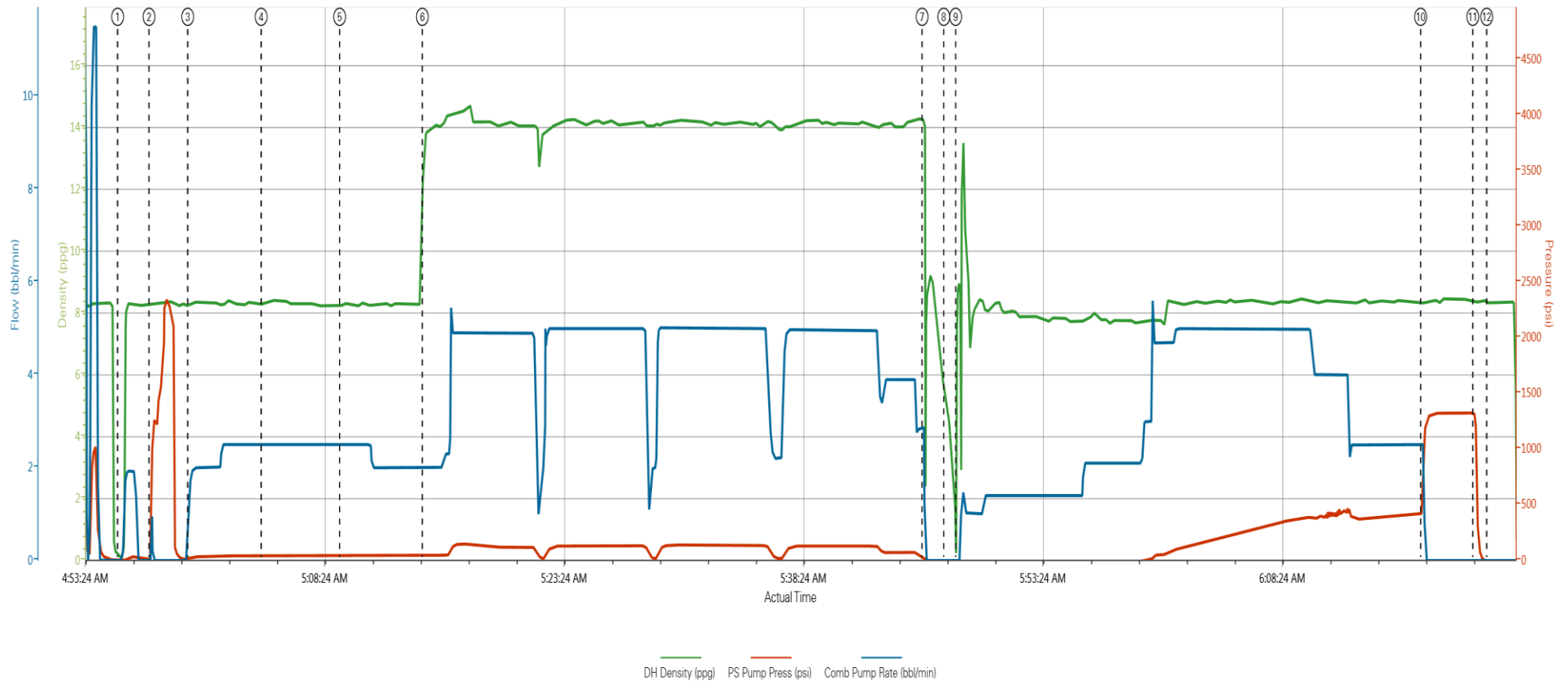
---

Stage /Plug #	Fluid #	Fluid Type	Fluid Name	Surface Density lbm/gal	Avg Rate bbl/min	Surface Volume	Downhole Volume
1	1	Spacer	Fresh Water Spacer	8.33	2.5	10.0 bbl	10.0 bbl
1	1	Spacer	Mud Flush	8.50	2.5	12.0 bbl	12.0 bbl
1	1	Spacer	Fresh Water Spacer	8.33	2.0	10.0 bbl	10.0 bbl
1	2	Cement Slurry	SwiftCem B2	14.2	5.0	499.0 sacks	499.0 sacks

# HALLIBURTON

## Data Acquisition

SEKICH STATE 9C-17HZ (9 5/8" SURFACE)



① Start Job 0:08;2,0	④ Pump Mudflush 8:34;43;2,5	⑦ Shutdown 14:25;32;2,8	⑩ Bump Plug 8:33;499;2,5
② Test Lines 8:31;11;0	⑤ Pump Water 8:25;46;2,5	⑧ Drop Top Plug 5:34;-19;0	⑪ Check Floats 8:37;1320;0
③ Pump Water 8:31;15;1,5	⑥ Pump Swiftcem 14:2# 13:24;42;2	⑨ Pump Displacement 8:71;-18;0	⑫ End Job 8:33;-18;0

▲ HALLIBURTON | iCem® Service

Created: 2014-03-28 02:41:45, Version: 3.0.121

Edit

# HALLIBURTON

## Service Supervisor Reports

### Job Log

Date/Time	Chart #	Activity Code	Pump Rate	Cum Vol	Pump		Pressure (psig)	Comments
03/27/2014 23:00		Call Out						CREW CALLED OUT AT 2300 TO BE ON LOCATION AT 0200. CREW WAS CHRISTOPHER PICKELL, KEATON SIMMONS, ROY NESBITT, CHUCK MILLS
03/28/2014 01:30		Depart from Service Center or Other Site						SAFETY MEETING HELD FOR JOURNEY. LEAVE THE YARD FOR MAJOR 29
03/28/2014 02:00		Arrive At Loc						ARRIVE AT LOCATION ON TIME. RIG HAD JUST BEGUN RUNNING CASING. CASING ON BOTTOM AT 0315.
03/28/2014 02:15		Rig-Up Equipment						HAZARD HUNT PERFORMED. RIG UP PLANNED AND EXECUTED
03/28/2014 04:30		Pre-Job Safety Meeting						SAFETY MEETING HELD WITH RIG CREW TO DISCUSS JOB SAFETY AND PROCEDURE
03/28/2014 04:55		Start Job						QUICK LATCH PLUG CONTAINER USED ON JOB
03/28/2014 04:57		Test Lines	1	2			2500.0	PRESSURE TEST LINES TO 2500 PSI. CHECK FOR VISIBLE LEAKS AND PRESSURE LOSS
03/28/2014 04:59		Pump Spacer 1	2.5	10			75.0	PUMP WATER
03/28/2014 05:04		Pump Spacer 2	2.5	12			80.0	PUMP MUDFLUSH
03/28/2014 05:09		Pump Spacer 1	2	10			90.0	PUMP WATER
03/28/2014 05:14		Pump Cement	5	137			150.0	PUMP SWIFTCEM CEMENT 499 SKS 14.2 PPG 1.54 CUFT/SK 7.67 GAL/SK
03/28/2014 05:45		Shutdown						WASH PUMPS AND LINES ON TOP OF THE PLUG
03/28/2014 05:47		Drop Top Plug						PLUG PRELOADED. WITNESSED BY COMPANY MAN
03/28/2014 05:48		Pump Displacement	5	90.8			520.0	PUMP DISPLACEMENT USING WATER
03/28/2014 06:17		Bump Plug	2.5				499.0	CALCULATED PRESSURE TO LAND WAS 359. PLUG LANDED WITH 499 PSI GOING 500 OVER TO 1000 PSI.
03/28/2014 06:20		Check Floats					1320.0	PRESSURE WAS HELD FOR 3 MINUTES THEN RELEASED. FLOATS HELD. 1 BBL BACK TO TANKS
03/28/2014 06:21		End Job						ALL PREFLUSH AND 20 BBL CEMENT TO SURFACE
03/28/2014 06:30		Pre-Rig Down Safety Meeting						SAFETY MEETING HELD FOR RIG DOWN
03/28/2014 06:40		Rig-Down Equipment						BLOW DOWN AND RIG DOWN ALL EQUIPMENT
03/28/2014 07:30		Depart Location for Service Center or Other Site						LEAVE LOCATION FOR THE YARD

*The Road to Excellence Starts with Safety*

<b>Sold To #:</b> 300466		<b>Ship To #:</b> 3367962		<b>Quote #:</b>		<b>Sales Order #:</b> 901227103	
<b>Customer:</b> ANADARKO PETROLEUM CORP - EBUS				<b>Customer Rep:</b> Case, Randy			
<b>Well Name:</b> SEKICH STATE			<b>Well #:</b> 9C-17 HZ		<b>API/UWI #:</b> 05-123-39122-00		
<b>Field:</b>		<b>City (SAP):</b> PLATTEVILLE		<b>County/Parish:</b> Weld		<b>State:</b> Colorado	
<b>Contractor:</b> Majors			<b>Rig/Platform Name/Num:</b> Majors 29				
<b>Job Purpose:</b> Cement Surface Casing							
<b>Well Type:</b> Development Well				<b>Job Type:</b> Cement Surface Casing			
<b>Sales Person:</b> GREGORY, JON			<b>Srvc Supervisor:</b> PICKELL, CHRISTOPHER			<b>MBU ID Emp #:</b> 396838	

**Job Personnel**

HES Emp Name	Exp Hrs	Emp #	HES Emp Name	Exp Hrs	Emp #	HES Emp Name	Exp Hrs	Emp #
MILLS, CHUCK	0.0	123456	NESBITT, ROY Iverson	0.0	537416	PICKELL, CHRISTOPHER Lee	0.0	396838
SIMMONS, KEATON J	0.0	524850						

**Equipment**

HES Unit #	Distance-1 way	HES Unit #	Distance-1 way	HES Unit #	Distance-1 way	HES Unit #	Distance-1 way
11019824C	25 mile	11341988C	25 mile	11605597	25 mile	11748359	25 mile
NA	25 mile						

**Job****Job Times**

Formation Name				Date	Time	Time Zone
Formation Depth (MD)	Top		Bottom	Called Out	27 - Mar - 2014	23:00 MST
Form Type		BHST		On Location	28 - Mar - 2014	02:00 MST
Job depth MD	1227. ft	Job Depth TVD	1227. ft	Job Started	28 - Mar - 2014	04:55 MST
Water Depth		Wk Ht Above Floor	4. ft	Job Completed	28 - Mar - 2014	06:21 MST
Perforation Depth (MD)	From		To	Departed Loc	28 - Mar - 2014	07:30 MST

Fluid Data									
Stage/Plug #: 1									
Fluid #	Stage Type	Fluid Name	Qty	Qty uom	Mixing Density lbm/gal	Yield ft <sup>3</sup> /sk	Mix Fluid Gal/sk	Rate bbl/min	Total Mix Fluid Gal/sk
1	Spacer	Fresh Water Spacer	10.0	bbl	8.33			2.5	
1	Spacer	Mud Flush	12.0	bbl	8.5			2.5	
1	Spacer	Fresh Water Spacer	10.0	bbl	8.33			2.0	
2	SwiftCem B2	SWIFTCM (TM) SYSTEM (452990)	499	sacks	14.2	1.54	7.64	5.0	7.64
7.64 Gal		FRESH WATER							
Calculated Values		Pressures		Volumes					
Displacement		Shut In: Instant		Lost Returns		Cement Slurry		Pad	
Top Of Cement		5 Min		Cement Returns	20.0	Actual Displacement	90.8	Treatment	
Frac Gradient		15 Min		Spacers	32.0	Load and Breakdown		Total Job	
Rates									
Circulating		Mixing		Displacement		Avg. Job			
Cement Left In Pipe	Amount	0 ft	Reason	Shoe Joint					
Frac Ring # 1 @	ID	Frac ring # 2 @	ID	Frac Ring # 3 @	ID	Frac Ring # 4 @	ID		
The Information Stated Herein Is Correct				Customer Representative Signature					

