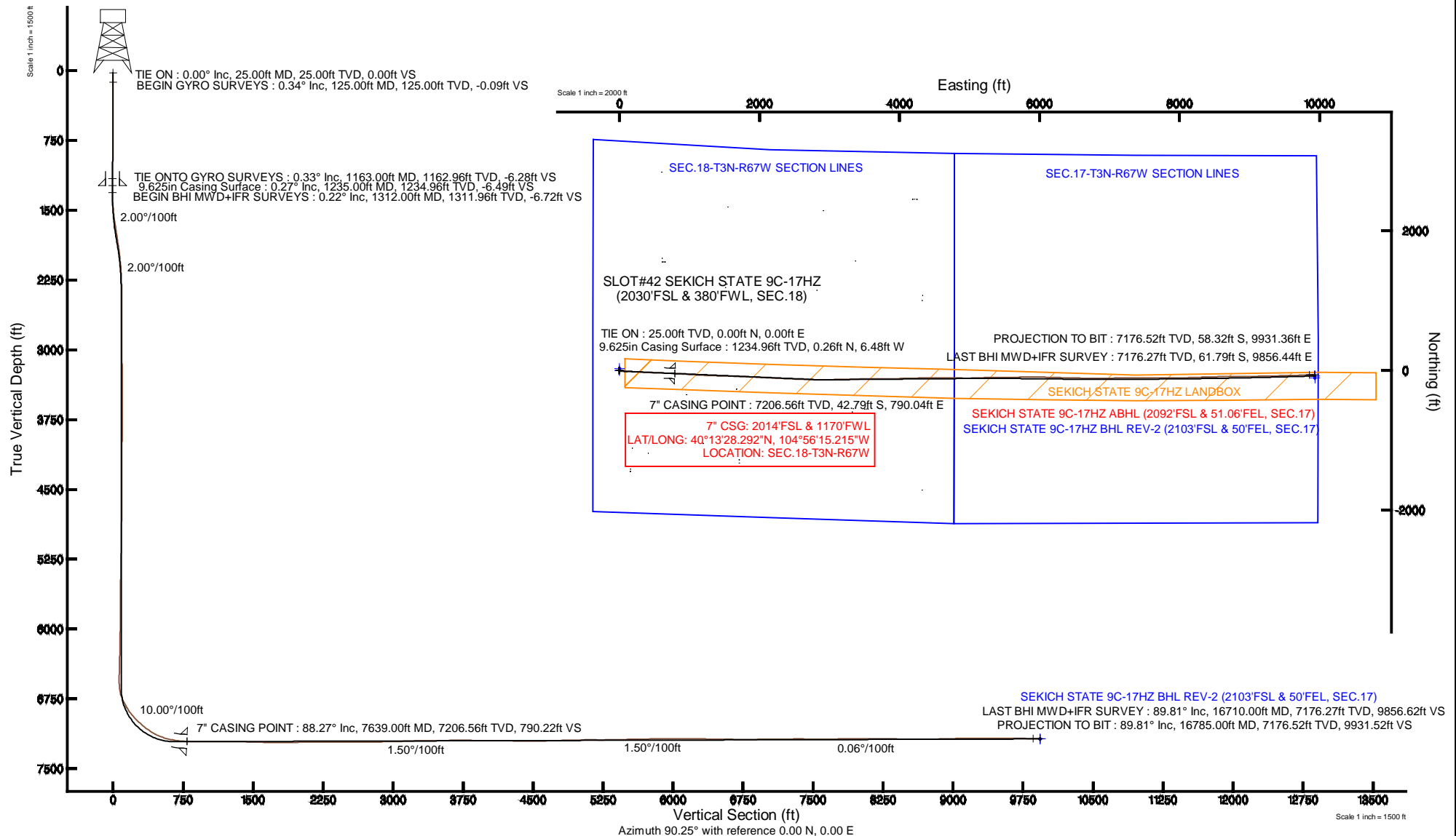


Location:	COLORADO	Slot:	SLOT#42 SEKICH STATE 9C-17HZ (2030'FSL & 380'FWL, SEC.18)
Field:	WELD COUNTY (KERR MCGEE)	Well:	SEKICH STATE 9C-17HZ
Facility:	SEC.18-T3N-R67W	Wellbore:	SEKICH STATE 9C-17HZ PWB

Plot reference wellpath is SEKICH STATE 9C-17HZ (REV-A.1) PWP	
True vertical depths are referenced to H&P 307 (25KB) (RKB)	Grid System: NAD83 / Lambert Colorado SP, Northern Zone (501), US feet
Measured depths are referenced to H&P 307 (25KB) (RKB)	North Reference: True north
H&P 307 (25KB) (RKB) to Mean Sea Level: 4880 feet	Scale: True distance
Mean Sea Level to Mud line (At Slot: SLOTH42 SEKICH STATE 9C-17HZ (2030'FSL & 380'FWL, SEC. 18): 0 feet	Depths are in feet
Coordinates are in feet referenced to Slot	Created by: robale01 on 07/May/2014



Actual Wellpath Report

SEKICH STATE 9C-17HZ AWP

Page 1 of 7

REFERENCE WELLPATH IDENTIFICATION

Operator	KERR-MCGEE OIL & GAS ONSHORE LP	Slot	SLOT#42 SEKICH STATE 9C-17HZ (2030'FSL & 380'FWL, SEC.18)
Area	COLORADO	Well	SEKICH STATE 9C-17HZ
Field	WELD COUNTY (KERR MCGEE)	Wellbore	SEKICH STATE 9C-17HZ AWB
Facility	SEC.18-T3N-R67W		

REPORT SETUP INFORMATION

Projection System	NAD83 / Lambert Colorado SP, Northern Zone (501), US feet	Software System	WellArchitect® 4.0.0
North Reference	True	User	Robiale01
Scale	0.999957	Report Generated	07/May/2014 at 08:57
Convergence at slot	n/a	Database/Source file	WellArchitectDB/SEKICH_STATE_9C-17HZ_AWB.xml

WELLPATH LOCATION

	Local coordinates		Grid coordinates		Geographic coordinates	
	North[ft]	East[ft]	Easting[US ft]	Northing[US ft]	Latitude	Longitude
Slot Location	-1248.39	-1532.73	3156259.59	1325172.59	40°13'28.715"N	104°56'25.400"W
Facility Reference Pt			3157784.27	1326430.67	40°13'41.052"N	104°56'05.640"W
Field Reference Pt			3197771.84	1268891.29	40°04'09.600"N	104°47'36.000"W

WELLPATH DATUM

Calculation method	Minimum curvature	H&P 307 (25'KB) (RKB) to Installation Vertical Datum	4880.00ft
Horizontal Reference Pt	Slot	H&P 307 (25'KB) (RKB) to Mean Sea Level	4880.00ft
Vertical Reference Pt	H&P 307 (25'KB) (RKB)	H&P 307 (25'KB) (RKB) to Mud Line at Slot (SLOT#42 SEKICH STATE 9C-17HZ (2030'FSL & 380'FWL, SEC.18))	4880.00ft
MD Reference Pt	H&P 307 (25'KB) (RKB)	Section Origin	N 0.00, E 0.00 ft
Field Vertical Reference	Mean Sea Level	Section Azimuth	90.25°

Actual Wellpath Report

SEKICH STATE 9C-17HZ AWP

Page 2 of 7

REFERENCE WELLPATH IDENTIFICATION

Operator	KERR-MCGEE OIL & GAS ONSHORE LP	Slot	SLOT#42 SEKICH STATE 9C-17HZ (2030'FSL & 380'FWL, SEC.18)
Area	COLORADO	Well	SEKICH STATE 9C-17HZ
Field	WELD COUNTY (KERR MCGEE)	Wellbore	SEKICH STATE 9C-17HZ AWB
Facility	SEC.18-T3N-R67W		

WELLPATH DATA (163 stations) † = interpolated/extrapolated station

MD [ft]	Inclination [°]	Azimuth [°]	TVD [ft]	Vert Sect [ft]	North [ft]	East [ft]	Latitude	Longitude	DLS [°/100ft]	Comments
0.00†	0.000	198.170	0.00	0.00	0.00	0.00	40°13'28.715"N	104°56'25.400"W	0.00	
25.00	0.000	198.170	25.00	0.00	0.00	0.00	40°13'28.715"N	104°56'25.400"W	0.00	TIE ON
125.00	0.340	198.170	125.00	-0.09	-0.28	-0.09	40°13'28.712"N	104°56'25.401"W	0.34	BEGIN GYRO SURVEYS
225.00	0.570	314.830	225.00	-0.54	-0.21	-0.54	40°13'28.713"N	104°56'25.407"W	0.78	
325.00	0.320	163.340	325.00	-0.81	-0.13	-0.81	40°13'28.714"N	104°56'25.410"W	0.86	
425.00	0.630	284.250	424.99	-1.26	-0.26	-1.26	40°13'28.712"N	104°56'25.416"W	0.84	
525.00	0.350	42.580	524.99	-1.59	0.10	-1.59	40°13'28.716"N	104°56'25.420"W	0.85	
625.00	0.880	265.170	624.99	-2.15	0.26	-2.15	40°13'28.718"N	104°56'25.428"W	1.16	
725.00	0.450	341.790	724.98	-3.04	0.57	-3.04	40°13'28.721"N	104°56'25.439"W	0.89	
825.00	0.470	348.200	824.98	-3.25	1.34	-3.24	40°13'28.728"N	104°56'25.442"W	0.06	
925.00	0.620	224.650	924.98	-3.71	1.36	-3.71	40°13'28.728"N	104°56'25.448"W	0.96	
1025.00	0.730	273.110	1024.97	-4.73	1.01	-4.72	40°13'28.725"N	104°56'25.461"W	0.56	
1125.00	0.780	246.370	1124.96	-5.99	0.77	-5.98	40°13'28.723"N	104°56'25.477"W	0.35	
1163.00	0.330	209.890	1162.96	-6.28	0.57	-6.27	40°13'28.721"N	104°56'25.481"W	1.45	TIE ONTO GYRO SURVEYS
1312.00	0.220	233.460	1311.96	-6.72	0.03	-6.72	40°13'28.715"N	104°56'25.487"W	0.10	BEGIN BHI MWD+IFR SURVEYS
1406.00	3.330	94.300	1405.91	-4.14	-0.28	-4.14	40°13'28.712"N	104°56'25.453"W	3.72	
1498.00	5.860	106.840	1497.61	3.03	-1.85	3.02	40°13'28.697"N	104°56'25.361"W	2.94	
1591.00	7.680	108.800	1589.96	13.47	-5.22	13.45	40°13'28.663"N	104°56'25.227"W	1.97	
1692.00	9.240	105.910	1689.85	27.68	-9.62	27.64	40°13'28.620"N	104°56'25.044"W	1.60	
1786.00	8.680	94.600	1782.71	42.02	-12.26	41.97	40°13'28.594"N	104°56'24.859"W	1.96	
1879.00	7.990	90.730	1874.73	55.48	-12.90	55.42	40°13'28.587"N	104°56'24.685"W	0.96	
1972.00	6.950	91.420	1966.94	67.57	-13.13	67.51	40°13'28.585"N	104°56'24.530"W	1.12	
2064.00	5.360	93.970	2058.41	77.42	-13.56	77.36	40°13'28.581"N	104°56'24.403"W	1.75	
2158.00	3.790	88.830	2152.11	84.91	-13.80	84.85	40°13'28.579"N	104°56'24.306"W	1.72	
2251.00	1.870	92.550	2244.99	89.50	-13.81	89.44	40°13'28.579"N	104°56'24.247"W	2.07	
2344.00	0.500	73.080	2337.97	91.40	-13.76	91.34	40°13'28.579"N	104°56'24.222"W	1.51	
2437.00	0.610	52.640	2430.96	92.18	-13.34	92.13	40°13'28.583"N	104°56'24.212"W	0.24	
2811.00	0.270	23.230	2804.95	94.10	-11.32	94.06	40°13'28.603"N	104°56'24.187"W	0.11	
3184.00	0.460	90.770	3177.95	95.95	-10.53	95.90	40°13'28.611"N	104°56'24.164"W	0.12	
3278.00	0.180	329.440	3271.94	96.25	-10.41	96.20	40°13'28.612"N	104°56'24.160"W	0.61	
3654.00	0.440	139.230	3647.94	96.89	-11.00	96.84	40°13'28.606"N	104°56'24.151"W	0.16	
3749.00	0.830	207.100	3742.94	96.82	-11.88	96.77	40°13'28.598"N	104°56'24.152"W	0.82	
4032.00	0.240	200.570	4025.92	95.69	-14.26	95.63	40°13'28.574"N	104°56'24.167"W	0.21	
4409.00	0.170	229.860	4402.92	94.99	-15.36	94.92	40°13'28.563"N	104°56'24.176"W	0.03	
4786.00	0.860	252.820	4779.90	91.86	-16.56	91.79	40°13'28.551"N	104°56'24.217"W	0.19	
5164.00	0.930	257.640	5157.86	86.16	-18.05	86.08	40°13'28.537"N	104°56'24.290"W	0.03	
5541.00	1.200	261.890	5534.79	79.27	-19.27	79.19	40°13'28.525"N	104°56'24.379"W	0.07	
5636.00	0.630	209.690	5629.78	78.03	-19.86	77.94	40°13'28.519"N	104°56'24.395"W	1.00	
5730.00	0.640	5.570	5723.78	77.83	-19.79	77.74	40°13'28.519"N	104°56'24.398"W	1.32	
6108.00	1.060	284.670	6101.75	74.64	-16.80	74.56	40°13'28.549"N	104°56'24.439"W	0.30	
6391.00	1.690	262.300	6384.67	67.97	-16.70	67.89	40°13'28.550"N	104°56'24.525"W	0.29	
6486.00	0.780	267.530	6479.64	65.93	-16.91	65.86	40°13'28.548"N	104°56'24.551"W	0.96	
6580.00	0.210	38.910	6573.64	65.40	-16.81	65.33	40°13'28.549"N	104°56'24.558"W	0.99	
6627.00	4.750	89.070	6620.59	67.40	-16.71	67.33	40°13'28.550"N	104°56'24.532"W	9.83	
6674.00	10.520	88.330	6667.15	73.64	-16.55	73.57	40°13'28.551"N	104°56'24.452"W	12.28	

Actual Wellpath Report

SEKICH STATE 9C-17HZ AWP

Page 3 of 7

REFERENCE WELLPATH IDENTIFICATION

Operator	KERR-MCGEE OIL & GAS ONSHORE LP	Slot	SLOT#42 SEKICH STATE 9C-17HZ (2030'FSL & 380'FWL, SEC.18)
Area	COLORADO	Well	SEKICH STATE 9C-17HZ
Field	WELD COUNTY (KERR MCGEE)	Wellbore	SEKICH STATE 9C-17HZ AWP
Facility	SEC.18-T3N-R67W		

WELLPATH DATA (163 stations) † = interpolated/extrapolated station

MD [ft]	Inclination [°]	Azimuth [°]	TVD [ft]	Vert Sect [ft]	North [ft]	East [ft]	Latitude	Longitude	DLS [°/100ft]	Comments
6721.00	17.480	89.110	6712.72	85.00	-16.31	84.93	40°13'28.554"N	104°56'24.305"W	14.81	
6768.00	23.630	87.130	6756.71	101.48	-15.73	101.41	40°13'28.560"N	104°56'24.093"W	13.17	
6815.00	27.720	87.750	6799.06	121.81	-14.83	121.75	40°13'28.568"N	104°56'23.830"W	8.72	
6863.00	30.890	91.110	6840.92	145.30	-14.63	145.23	40°13'28.570"N	104°56'23.528"W	7.44	
6910.00	34.390	92.180	6880.49	170.63	-15.37	170.57	40°13'28.563"N	104°56'23.201"W	7.55	
6957.00	38.470	93.380	6918.30	198.51	-16.74	198.44	40°13'28.550"N	104°56'22.842"W	8.81	
7004.00	42.750	93.730	6953.97	229.04	-18.64	228.96	40°13'28.531"N	104°56'22.448"W	9.12	
7051.00	46.150	92.670	6987.52	261.91	-20.47	261.82	40°13'28.513"N	104°56'22.025"W	7.40	
7098.00	49.230	92.670	7019.15	296.63	-22.09	296.53	40°13'28.497"N	104°56'21.577"W	6.55	
7146.00	52.070	93.110	7049.58	333.70	-23.96	333.60	40°13'28.478"N	104°56'21.099"W	5.96	
7193.00	54.430	92.540	7077.70	371.32	-25.81	371.21	40°13'28.460"N	104°56'20.614"W	5.11	
7240.00	56.720	92.600	7104.27	410.06	-27.55	409.94	40°13'28.443"N	104°56'20.115"W	4.87	
7287.00	61.230	92.700	7128.49	450.29	-29.41	450.16	40°13'28.424"N	104°56'19.597"W	9.60	
7335.00	67.020	92.810	7149.43	493.42	-31.49	493.28	40°13'28.404"N	104°56'19.041"W	12.06	
7382.00	72.490	92.130	7165.68	537.46	-33.39	537.32	40°13'28.385"N	104°56'18.473"W	11.72	
7429.00	76.650	91.610	7178.19	582.74	-34.86	582.59	40°13'28.370"N	104°56'17.889"W	8.92	
7476.00	77.500	92.230	7188.70	628.53	-36.40	628.37	40°13'28.355"N	104°56'17.299"W	2.22	
7523.00	82.000	92.240	7197.06	674.74	-38.20	674.58	40°13'28.337"N	104°56'16.703"W	9.57	
7585.00	85.680	91.940	7203.71	736.34	-40.45	736.17	40°13'28.315"N	104°56'15.909"W	5.95	
7639.00†	88.268	93.039	7206.56	790.22	-42.79	790.04	40°13'28.292"N	104°56'15.215"W	5.21	7" CASING POINT
7677.00	90.090	93.810	7207.11	828.15	-45.06	827.96	40°13'28.270"N	104°56'14.726"W	5.21	
7772.00	89.780	93.500	7207.21	922.99	-51.11	922.77	40°13'28.210"N	104°56'13.504"W	0.46	
7866.00	90.270	93.860	7207.17	1016.82	-57.15	1016.57	40°13'28.150"N	104°56'12.294"W	0.65	
7960.00	90.300	93.710	7206.71	1110.64	-63.35	1110.37	40°13'28.089"N	104°56'11.085"W	0.16	
8055.00	89.070	92.450	7207.23	1205.52	-68.46	1205.23	40°13'28.038"N	104°56'09.862"W	1.85	
8149.00	89.690	92.530	7208.25	1299.44	-72.54	1299.13	40°13'27.998"N	104°56'08.652"W	0.67	
8243.00	88.120	91.200	7210.04	1393.38	-75.60	1393.06	40°13'27.968"N	104°56'07.441"W	2.19	
8337.00	88.580	91.560	7212.75	1487.32	-77.86	1486.99	40°13'27.945"N	104°56'06.230"W	0.62	
8432.00	88.330	91.720	7215.31	1582.26	-80.58	1581.92	40°13'27.918"N	104°56'05.006"W	0.31	
8526.00	89.290	92.350	7217.26	1676.19	-83.92	1675.84	40°13'27.885"N	104°56'03.795"W	1.22	
8621.00	89.690	91.740	7218.11	1771.14	-87.31	1770.77	40°13'27.852"N	104°56'02.571"W	0.77	
8715.00	91.040	93.180	7217.51	1865.06	-91.34	1864.68	40°13'27.812"N	104°56'01.361"W	2.10	
8810.00	90.640	92.760	7216.12	1959.95	-96.26	1959.54	40°13'27.763"N	104°56'00.138"W	0.61	
8904.00	90.270	92.590	7215.37	2053.86	-100.65	2053.44	40°13'27.720"N	104°55'58.927"W	0.43	
8998.00	90.520	92.730	7214.72	2147.77	-105.01	2147.33	40°13'27.676"N	104°55'57.717"W	0.30	
9093.00	90.670	93.480	7213.74	2242.65	-110.16	2242.19	40°13'27.625"N	104°55'56.494"W	0.81	
9187.00	90.330	92.450	7212.91	2336.54	-115.02	2336.06	40°13'27.577"N	104°55'55.284"W	1.15	
9282.00	89.750	92.410	7212.85	2431.47	-119.05	2430.97	40°13'27.537"N	104°55'54.060"W	0.61	
9376.00	90.490	92.100	7212.65	2525.41	-122.75	2524.90	40°13'27.501"N	104°55'52.849"W	0.85	
9469.00	89.720	92.150	7212.48	2618.36	-126.19	2617.83	40°13'27.467"N	104°55'51.651"W	0.83	
9561.00	90.400	91.020	7212.38	2710.34	-128.74	2709.79	40°13'27.441"N	104°55'50.466"W	1.43	
9655.00	90.670	90.360	7211.51	2804.33	-129.87	2803.78	40°13'27.430"N	104°55'49.254"W	0.76	
9748.00	90.120	89.740	7210.87	2897.32	-129.95	2896.78	40°13'27.429"N	104°55'48.055"W	0.89	
9841.00	91.350	89.650	7209.67	2990.31	-129.46	2989.77	40°13'27.434"N	104°55'46.856"W	1.33	
9933.00	92.460	88.790	7206.61	3082.24	-128.21	3081.71	40°13'27.446"N	104°55'45.671"W	1.53	

Actual Wellpath Report

SEKICH STATE 9C-17HZ AWP

Page 4 of 7

REFERENCE WELLPATH IDENTIFICATION			
Operator	KERR-MCGEE OIL & GAS ONSHORE LP	Slot	SLOT#42 SEKICH STATE 9C-17HZ (2030'FSL & 380'FWL, SEC.18)
Area	COLORADO	Well	SEKICH STATE 9C-17HZ
Field	WELD COUNTY (KERR MCGEE)	Wellbore	SEKICH STATE 9C-17HZ AWP
Facility	SEC.18-T3N-R67W		

WELLPATH DATA (163 stations)

MD [ft]	Inclination [°]	Azimuth [°]	TVD [ft]	Vert Sect [ft]	North [ft]	East [ft]	Latitude	Longitude	DLS [°/100ft]	Comments
10027.00	92.000	88.830	7202.96	3176.14	-126.26	3175.62	40°13'27.465"N	104°55'44.460"W	0.49	
10120.00	92.430	89.390	7199.36	3269.05	-124.81	3268.53	40°13'27.479"N	104°55'43.262"W	0.76	
10213.00	90.150	88.630	7197.27	3362.00	-123.21	3361.49	40°13'27.495"N	104°55'42.064"W	2.58	
10306.00	90.180	89.220	7197.00	3454.98	-121.46	3454.47	40°13'27.512"N	104°55'40.865"W	0.64	
10399.00	90.580	89.870	7196.38	3547.97	-120.72	3547.47	40°13'27.520"N	104°55'39.666"W	0.82	
10493.00	90.300	90.220	7195.66	3641.96	-120.80	3641.46	40°13'27.519"N	104°55'38.455"W	0.48	
10586.00	90.030	88.930	7195.39	3734.95	-120.11	3734.46	40°13'27.525"N	104°55'37.256"W	1.42	
10773.00	88.950	89.160	7197.06	3921.90	-116.99	3921.42	40°13'27.556"N	104°55'34.845"W	0.59	
10867.00	88.950	88.450	7198.78	4015.85	-115.03	4015.39	40°13'27.575"N	104°55'33.634"W	0.76	
10960.00	89.720	88.530	7199.86	4108.80	-112.58	4108.35	40°13'27.599"N	104°55'32.436"W	0.83	
11053.00	90.030	88.940	7200.06	4201.77	-110.53	4201.32	40°13'27.619"N	104°55'31.237"W	0.55	
11147.00	88.640	87.950	7201.15	4295.71	-107.98	4295.28	40°13'27.644"N	104°55'30.026"W	1.82	
11240.00	89.530	88.560	7202.64	4388.64	-105.14	4388.22	40°13'27.672"N	104°55'28.827"W	1.16	
11333.00	90.270	89.300	7202.80	4481.62	-103.41	4481.21	40°13'27.689"N	104°55'27.629"W	1.13	
11425.00	90.330	90.750	7202.32	4573.61	-103.45	4573.20	40°13'27.689"N	104°55'26.443"W	1.58	
11517.00	92.000	90.670	7200.45	4665.59	-104.59	4665.17	40°13'27.677"N	104°55'25.257"W	1.82	
11609.00	91.810	91.020	7197.39	4757.53	-105.94	4757.11	40°13'27.664"N	104°55'24.072"W	0.43	
11701.00	91.230	91.370	7194.95	4849.49	-107.86	4849.06	40°13'27.644"N	104°55'22.886"W	0.74	
11792.00	91.260	90.180	7192.97	4940.46	-109.09	4940.03	40°13'27.632"N	104°55'21.714"W	1.31	
11884.00	91.010	89.170	7191.15	5032.44	-108.57	5032.01	40°13'27.637"N	104°55'20.528"W	1.13	
11976.00	89.660	87.430	7190.61	5124.38	-105.84	5123.96	40°13'27.664"N	104°55'19.342"W	2.39	
12068.00	89.810	87.830	7191.04	5216.28	-102.04	5215.88	40°13'27.701"N	104°55'18.157"W	0.46	
12160.00	90.980	88.640	7190.41	5308.22	-99.20	5307.83	40°13'27.729"N	104°55'16.972"W	1.55	
12254.00	91.200	89.200	7188.62	5402.17	-97.43	5401.80	40°13'27.746"N	104°55'15.760"W	0.64	
12348.00	91.570	89.760	7186.34	5496.14	-96.58	5495.76	40°13'27.755"N	104°55'14.549"W	0.71	
12443.00	91.200	90.090	7184.05	5591.11	-96.45	5590.74	40°13'27.756"N	104°55'13.325"W	0.52	
12537.00	91.470	89.090	7181.86	5685.07	-95.78	5684.71	40°13'27.762"N	104°55'12.113"W	1.10	
12632.00	90.180	88.960	7180.49	5780.04	-94.17	5779.68	40°13'27.778"N	104°55'10.889"W	1.36	
12726.00	90.150	90.170	7180.22	5874.03	-93.45	5873.68	40°13'27.785"N	104°55'09.677"W	1.29	
12821.00	90.670	90.180	7179.54	5969.03	-93.74	5968.67	40°13'27.782"N	104°55'08.452"W	0.55	
12915.00	89.290	91.260	7179.57	6063.02	-94.92	6062.66	40°13'27.770"N	104°55'07.241"W	1.86	
13010.00	89.660	91.640	7180.44	6158.00	-97.33	6157.63	40°13'27.746"N	104°55'06.016"W	0.56	
13104.00	90.430	92.070	7180.37	6251.96	-100.37	6251.58	40°13'27.715"N	104°55'04.805"W	0.94	
13198.00	89.040	91.430	7180.80	6345.92	-103.24	6345.53	40°13'27.687"N	104°55'03.594"W	1.63	
13293.00	89.290	91.530	7182.19	6440.89	-105.69	6440.49	40°13'27.662"N	104°55'02.370"W	0.28	
13387.00	88.640	90.990	7183.89	6534.86	-107.76	6534.45	40°13'27.642"N	104°55'01.158"W	0.90	
13481.00	89.070	91.020	7185.77	6628.83	-109.41	6628.42	40°13'27.625"N	104°54'59.947"W	0.46	
13575.00	89.840	90.570	7186.66	6722.82	-110.71	6722.40	40°13'27.612"N	104°54'58.735"W	0.95	
13670.00	90.150	89.340	7186.67	6817.82	-110.64	6817.40	40°13'27.612"N	104°54'57.511"W	1.34	
13764.00	90.980	89.540	7185.74	6911.81	-109.72	6911.39	40°13'27.621"N	104°54'56.299"W	0.91	
13859.00	91.510	89.770	7183.68	7006.78	-109.15	7006.36	40°13'27.627"N	104°54'55.074"W	0.61	
13953.00	90.210	89.200	7182.27	7100.76	-108.30	7100.35	40°13'27.635"N	104°54'53.863"W	1.51	
14048.00	90.240	89.040	7181.89	7195.74	-106.84	7195.34	40°13'27.649"N	104°54'52.638"W	0.17	
14142.00	90.950	89.310	7180.92	7289.71	-105.49	7289.32	40°13'27.662"N	104°54'51.427"W	0.81	
14237.00	89.350	89.910	7180.67	7384.70	-104.84	7384.31	40°13'27.668"N	104°54'50.202"W	1.80	

Actual Wellpath Report

SEKICH STATE 9C-17HZ AWP

Page 5 of 7

REFERENCE WELLPATH IDENTIFICATION

Operator	KERR-MCGEE OIL & GAS ONSHORE LP	Slot	SLOT#42 SEKICH STATE 9C-17HZ (2030'FSL & 380'FWL, SEC.18)
Area	COLORADO	Well	SEKICH STATE 9C-17HZ
Field	WELD COUNTY (KERR MCGEE)	Wellbore	SEKICH STATE 9C-17HZ AWB
Facility	SEC.18-T3N-R67W		

WELLPATH DATA (163 stations)

MD [ft]	Inclination [°]	Azimuth [°]	TVD [ft]	Vert Sect [ft]	North [ft]	East [ft]	Latitude	Longitude	DLS [°/100ft]	Comments
14331.00	89.570	89.890	7181.55	7478.70	-104.68	7478.31	40°13'27.669"N	104°54'48.990"W	0.24	
14419.00	90.000	90.250	7181.88	7566.70	-104.79	7566.31	40°13'27.668"N	104°54'47.856"W	0.64	
14513.00	90.360	90.310	7181.59	7660.70	-105.25	7660.31	40°13'27.663"N	104°54'46.644"W	0.39	
14607.00	90.460	90.130	7180.92	7754.69	-105.61	7754.30	40°13'27.659"N	104°54'45.432"W	0.22	
14702.00	90.430	90.040	7180.18	7849.69	-105.75	7849.30	40°13'27.658"N	104°54'44.207"W	0.10	
14796.00	91.380	90.110	7178.69	7943.68	-105.87	7943.29	40°13'27.656"N	104°54'42.996"W	1.01	
14891.00	90.430	88.080	7177.19	8038.64	-104.37	8038.26	40°13'27.671"N	104°54'41.771"W	2.36	
14985.00	90.430	88.510	7176.49	8132.58	-101.57	8132.21	40°13'27.698"N	104°54'40.560"W	0.46	
15079.00	88.420	87.880	7177.43	8226.51	-98.61	8226.16	40°13'27.727"N	104°54'39.349"W	2.24	
15173.00	88.850	88.120	7179.67	8320.41	-95.33	8320.07	40°13'27.759"N	104°54'38.138"W	0.52	
15268.00	89.560	88.380	7180.99	8415.34	-92.43	8415.02	40°13'27.787"N	104°54'36.914"W	0.80	
15362.00	90.180	88.170	7181.20	8509.29	-89.60	8508.98	40°13'27.815"N	104°54'35.703"W	0.70	
15456.00	89.560	88.850	7181.41	8603.24	-87.16	8602.94	40°13'27.839"N	104°54'34.491"W	0.98	
15551.00	89.840	89.530	7181.91	8698.22	-85.82	8697.93	40°13'27.852"N	104°54'33.267"W	0.77	
15645.00	90.640	89.960	7181.52	8792.22	-85.40	8791.93	40°13'27.856"N	104°54'32.055"W	0.97	
15739.00	91.380	89.590	7179.86	8886.20	-85.03	8885.91	40°13'27.859"N	104°54'30.843"W	0.88	
15834.00	92.000	89.580	7177.06	8981.15	-84.34	8980.87	40°13'27.865"N	104°54'29.619"W	0.65	
15928.00	90.550	88.820	7174.97	9075.11	-83.03	9074.83	40°13'27.878"N	104°54'28.408"W	1.74	
16022.00	91.290	89.020	7173.46	9169.07	-81.26	9168.80	40°13'27.895"N	104°54'27.196"W	0.82	
16117.00	90.330	88.710	7172.12	9264.03	-79.38	9263.77	40°13'27.913"N	104°54'25.972"W	1.06	
16211.00	88.910	88.430	7172.74	9357.99	-77.03	9357.74	40°13'27.936"N	104°54'24.761"W	1.54	
16306.00	88.820	88.670	7174.62	9452.93	-74.63	9452.69	40°13'27.960"N	104°54'23.536"W	0.27	
16400.00	90.030	88.660	7175.56	9546.89	-72.44	9546.66	40°13'27.981"N	104°54'22.325"W	1.29	
16495.00	90.700	88.960	7174.96	9641.85	-70.46	9641.64	40°13'28.000"N	104°54'21.101"W	0.77	
16589.00	89.040	87.160	7175.17	9735.78	-67.28	9735.57	40°13'28.031"N	104°54'19.889"W	2.60	
16683.00	89.750	87.590	7176.17	9829.65	-62.98	9829.47	40°13'28.073"N	104°54'18.679"W	0.88	
16710.00	89.810	87.350	7176.27	9856.62	-61.79	9856.44	40°13'28.085"N	104°54'18.331"W	0.92	LAST BHI MWD+IFR SURVEY
16785.00	89.810	87.350	7176.52	9931.52	-58.32	9931.36	40°13'28.119"N	104°54'17.365"W	0.00	PROJECTION TO BIT

HOLE & CASING SECTIONS - Ref Wellbore: SEKICH STATE 9C-17HZ AWB Ref Wellpath: SEKICH STATE 9C-17HZ AWP

String/Diameter	Start MD [ft]	End MD [ft]	Interval [ft]	Start TVD [ft]	End TVD [ft]	Start N/S [ft]	Start E/W [ft]	End N/S [ft]	End E/W [ft]
13.5in Open Hole	25.00	1246.00	1221.00	25.00	1245.96	0.00	0.00	0.22	-6.52
9.625in Casing Surface	25.00	1235.00	1210.00	25.00	1234.96	0.00	0.00	0.26	-6.48
8.75in Open Hole	1246.00	7650.00	6404.00	1245.96	7206.84	0.22	-6.52	-43.39	801.02
7in Casing Intermediate	25.00	7639.00	7614.00	25.00	7206.56	0.00	0.00	-42.79	790.04
6.125in Open Hole	7650.00	16785.00	9135.00	7206.84	7176.52	-43.39	801.02	-58.32	9931.36

Actual Wellpath Report

SEKICH STATE 9C-17HZ AWP

Page 6 of 7

REFERENCE WELLPATH IDENTIFICATION

Operator	KERR-MCGEE OIL & GAS ONSHORE LP	Slot	SLOT#42 SEKICH STATE 9C-17HZ (2030'FSL & 380'FWL, SEC.18)
Area	COLORADO	Well	SEKICH STATE 9C-17HZ
Field	WELD COUNTY (KERR MCGEE)	Wellbore	SEKICH STATE 9C-17HZ AWB
Facility	SEC.18-T3N-R67W		

TARGETS

Name	MD [ft]	TVD [ft]	North [ft]	East [ft]	Grid East [US ft]	Grid North [US ft]	Latitude	Longitude	Shape
SEC.17-T3N-R67W SECTION LINES		6.00	30.26	0.23	3156259.63	1325202.85	40°13'29.014"N	104°56'25.397"W	polygon
SEC.18-T3N-R67W SECTION LINES		27.00	2453.21	4188.47	3160432.31	1327652.08	40°13'52.954"N	104°55'31.397"W	polygon
SEKICH STATE 9C-17HZ BHL ON PLAT REV-1 (2073'FSL & 50'FEL, SEC.17)		7180.00	-107.32	9932.42	3166192.04	1325127.96	40°13'27.635"N	104°54'17.352"W	point
SEKICH STATE 9C-17HZ BHL REV-2 (2103'FSL & 50'FEL, SEC.17)		7180.00	-77.32	9932.42	3166191.85	1325157.96	40°13'27.931"N	104°54'17.352"W	point
SEKICH STATE 9C-17HZ LANDBOX		7180.00	0.00	0.00	3156259.59	1325172.59	40°13'28.715"N	104°56'25.400"W	polygon

WELLPATH COMPOSITION - Ref Wellbore: SEKICH STATE 9C-17HZ AWB Ref Wellpath: SEKICH STATE 9C-17HZ AWP

Start MD [ft]	End MD [ft]	Positional Uncertainty Model	Log Name/Comment	Wellbore
25.00	1163.00	Generic gyro - continuous (Standard)	MS ENERGY GYRO SURVEYS <125-1163>	SEKICH STATE 9C-17HZ AWB
1163.00	7585.00	NaviTrak (IFR)	BHI NAVITRAK MWD+IFR 8 3/4" <1312-7585>	SEKICH STATE 9C-17HZ AWB
7585.00	16710.00	NaviTrak (IFR)	BHI NAVITRAK MWD+IFR 6 1/8" <7677-16710>	SEKICH STATE 9C-17HZ AWB
16710.00	16785.00	Blind Drilling (std)	Projection to bit	SEKICH STATE 9C-17HZ AWB

Actual Wellpath Report

SEKICH STATE 9C-17HZ AWP

Page 7 of 7

REFERENCE WELLPATH IDENTIFICATION			
Operator	KERR-MCGEE OIL & GAS ONSHORE LP	Slot	SLOT#42 SEKICH STATE 9C-17HZ (2030'FSL & 380'FWL, SEC.18)
Area	COLORADO	Well	SEKICH STATE 9C-17HZ
Field	WELD COUNTY (KERR MCGEE)	Wellbore	SEKICH STATE 9C-17HZ AWB
Facility	SEC.18-T3N-R67W		

WELLPATH COMMENTS				
MD [ft]	Inclination [°]	Azimuth [°]	TVD [ft]	Comment
25.00	0.000	198.170	25.00	TIE ON
125.00	0.340	198.170	125.00	BEGIN GYRO SURVEYS
1163.00	0.330	209.890	1162.96	TIE ONTO GYRO SURVEYS
1312.00	0.220	233.460	1311.96	BEGIN BHI MWD+IFR SURVEYS
7639.00	88.268	93.039	7206.56	7" CASING POINT
16710.00	89.810	87.350	7176.27	LAST BHI MWD+IFR SURVEY
16785.00	89.810	87.350	7176.52	PROJECTION TO BIT