

ANADARKO PETROLEUM CORP - EBUS

NRC 1C-8 HZ

Majors 29

Post Job Summary
Cement Surface Casing

Date Prepared: 4/16/2014
Version: 1

Service Supervisor: VIGIL, NICHOLAS

Submitted by: PRUDHOMME, JOSHUA

HALLIBURTON

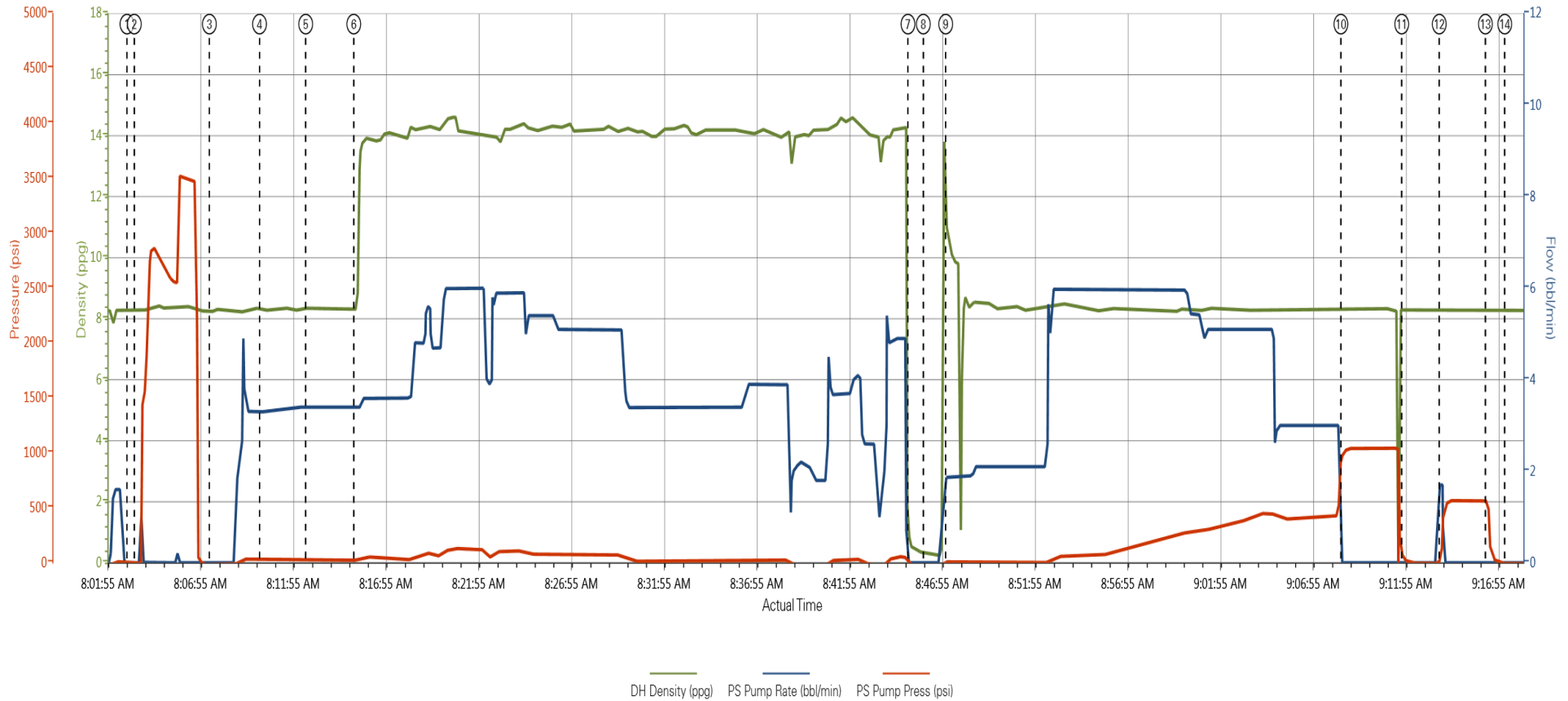
Pumping Schedule

Stage /Plug #	Fluid #	Fluid Type	Fluid Name	Surface Density lbm/gal	Avg Rate bbl/min	Surface Volume	Downhole Volume
1	1	Spacer	Mud Flush	8.33	3.0	10.0 bbl	10.0 bbl
1	1	Spacer	Mud Flush	8.50	3.5	12.0 bbl	12.0 bbl
1	1	Spacer	Mud Flush	8.33	3.5	10.0 bbl	10.0 bbl
1	2	Cement Slurry	SwiftCem B2	14.2	5.0	442.0 sacks	442.0 sacks

HALLIBURTON

Data Acquisition

Anadarko NRC 1C-8HZ



① Start Job ② Test Lines ③ Water Spacer ④ Mud Flush ⑤ Water Spacer ⑥ 14.2 ppg SwiftCem ⑦ Shutdown ⑧ Drop Top Plug ⑨ Pump Displacement ⑩ Bump Plug ⑪ Check Floats ⑫ Re-Bump Plug ⑬ Check Floats ⑭ End Job

▼ HALLIBURTON | iCem® Service

Created: 2014-04-01 07:01:01, Version: 3.0.121

Edit

Customer: ANADARKO PETROLEUM CORP - EBUS

Job Date: 4/1/2014 7:03:52 AM

Well: NRC 1C-8HZ

Representative: Nicholas Vigil

Sales Order #: 901232629

Job Type: 9.5/5 Surface

HALLIBURTON

Service Supervisor Reports

Job Log

Date/Time	Chart #	Activity Code	Pump Rate	Cum Vol	Pump	Pressure (psig)	Comments
04/01/2014 06:30		Arrive At Loc					On location time was ASAP, Company man had forgot to call us out when they TD'd, Rig was on bottom circulating when we arrived
04/01/2014 06:35		Assessment Of Location Safety Meeting					Hazard hunt, Rig up safety meeting, Water test
04/01/2014 06:45		Rig-Up Equipment					
04/01/2014 07:20		Rig-Up Completed					
04/01/2014 07:45		Pre-Job Safety Meeting					Held safety meeting with all personnel on location
04/01/2014 08:03		Start Job					
04/01/2014 08:03		Test Lines					Pressure tested lines to 3000 psi
04/01/2014 08:07		Pump Spacer 1	3.3	10		27.0	Water Spacer
04/01/2014 08:10		Pump Spacer 2	3.3	12		25.0	Mud Flush
04/01/2014 08:12		Pump Spacer 1	3.3	10		29.0	Water Spacer
04/01/2014 08:15		Pump Cement	5	121		70.0	14.2 ppg SwiftCem (442 sks), weight was verified by scale
04/01/2014 08:45		Shutdown					
04/01/2014 08:46		Drop Top Plug					Plug was pre loaded
04/01/2014 08:47		Pump Displacement	6	40		154.0	Displaced using fresh water
04/01/2014 09:08		Bump Plug	3	91.5		430.0	Bumped plug 500 psi over final lift bringing our pressure to 1000 psi
04/01/2014 09:11		Check Floats					Floats held
04/01/2014 09:13		Other	1	1		550.0	Company man wanted us to rebump the plug because of issues with previous well
04/01/2014 09:16		Check Floats					Floats held
04/01/2014 09:17		End Job					Rig down safety meeting
04/01/2014 09:25		Rig-Down Equipment					
04/01/2014 10:00		Rig-Down Completed					

The Road to Excellence Starts with Safety

Sold To #:	Ship To #:	Quote #:	Sales Order #: 901232629
Customer: ANADARKO PETROLEUM CORP - EBUS		Customer Rep: Case, Randy	
Well Name: NRC		Well #: 1C-8 HZ	API/UWI #: 05-123-39091-00
Field:	City (SAP):	County/Parish: Weld	State: Colorado
Contractor: Majors		Rig/Platform Name/Num: Majors 29	
Job Purpose: Cement Surface Casing			
Well Type: Development Well		Job Type: Cement Surface Casing	
Sales Person: GREGORY, JON		Srvc Supervisor: VIGIL, NICHOLAS	MBU ID Emp #: 443481

Job Personnel

HES Emp Name	Exp Hrs	Emp #	HES Emp Name	Exp Hrs	Emp #	HES Emp Name	Exp Hrs	Emp #
BANUELOS, GUADALUPE	0.0	372277	MAYFIELD, BYRON L	0.0	528751	SCILEPPI, JOSEPH Dean	0.0	555492
VIGIL, NICHOLAS Joseph	0.0	443481						

Equipment

HES Unit #	Distance-1 way	HES Unit #	Distance-1 way	HES Unit #	Distance-1 way	HES Unit #	Distance-1 way
11036295C	30 mile	11360865C	30 mile	11667703C	30 mile		

Job

Job Times

Formation Name	Formation Depth (MD) Top	Bottom	Form Type	Job depth MD	Water Depth	Perforation Depth (MD) From	To	Called Out	Date	Time	Time Zone
			BHST	1233. ft					01 - Apr - 2014	03:00	MST
								On Location	01 - Apr - 2014	06:30	MST
								Job Started	01 - Apr - 2014	08:03	MST
								Job Completed	01 - Apr - 2014	09:17	MST
								Departed Loc	01 - Apr - 2014	10:15	MST

Fluid Data									
Stage/Plug #: 1									
Fluid #	Stage Type	Fluid Name	Qty	Qty uom	Mixing Density lbm/gal	Yield ft ³ /sk	Mix Fluid Gal/sk	Rate bbl/min	Total Mix Fluid Gal/sk
1	Fresh Water Spacer		10.0	bbl	8.33			3.0	
1	Mud Flush		12.0	bbl	8.5			3.5	
1	Fresh Water Spacer		10.0	bbl	8.33			3.5	
2	SwiftCem B2	SWIFTCM (TM) SYSTEM (452990)	442	sacks	14.2	1.54	7.64	5.0	7.64
7.64 Gal		FRESH WATER							
Calculated Values			Pressures			Volumes			
Displacement		Shut In: Instant		Lost Returns		Cement Slurry		Pad	
Top Of Cement		5 Min		Cement Returns		Actual Displacement		91.5 Treatment	
Frac Gradient		15 Min		Spacers		Load and Breakdown		Total Job	
Rates									
Circulating		Mixing		Displacement		Avg. Job			
Cement Left In Pipe		Amount	0 ft	Reason	Shoe Joint				
Frac Ring # 1 @	ID	Frac ring # 2 @	ID	Frac Ring # 3 @	ID	Frac Ring # 4 @	ID		
The Information Stated Herein Is Correct				Customer Representative Signature					

