

SURFACE LEASE AND EASEMENT

STATE OF COLORADO)
) ss.
COUNTY OF WELD)

FOR A GOOD AND VALUABLE CONSIDERATION, the receipt and sufficiency of which is hereby acknowledged, Timbro Ranch and Cattle Company, LLC., whose address is 4700 W. 60th Ave. #4, Arvada, CO 80003 ("Lessor") owners of the surface estate therein, do hereby lease and let unto WHITING OIL AND GAS CORPORATION ("Lessee") the following described lands located in Weld County, Colorado ("the Lands"):

TOWNSHIP 10 NORTH, RANGE 58 WEST, 6th P.M.
SECTION 25: NE4

for the purpose of storing liquids produced from oil and gas wells, consisting of storage tanks and related facilities for transportation of such liquids..

Lessee is also granted an easement along existing roads for the right of ingress and egress to the Lands so that Lessee may remove stored production off the Lands as deemed necessary and desirable by Lessee. If a new access road is required, such shall be shown on the attached Exhibit A and Lessor shall be compensated for such as the rate of \$4.00 per foot; such road shall not exceed 66 feet in width without prior Lessor approval.

Lessee is further granted pipeline easements required to connect tank batteries to transport produced liquids from oil and gas wells to the storage facilities located on the N ½ Section 25, 10N, 58W. Such easements shall be 30 feet in width. As-built surveys will be provided upon completion of installation of the pipelines.

This lease shall be for a term of 50 years, with the right to renew for an additional 10 years. Lessee shall pay to Lessor a onetime payment of per acre upon execution of this lease. At the termination of this lease, Lessee shall remove all pipe and equipment stored on the Lands.

In consideration of the foregoing, Lessor hereby acknowledges that the aforementioned amount represents full, final and agreed to consideration for any and all damages and loss of use resulting from Lessee's operations on the Lands.

Lessee shall indemnify, defend and save and hold harmless Lessor from any and all claims, demands, causes of action, or liability for damages, loss or injuries that arise out of Lessee's operations on the land.

Any notice to be given and the payment described above shall be made to the following addresses:

Lessee:

Whiting Oil and Gas Corporation
1700 Broadway, Suite 2300
Denver, CO 80290
Attention: Dusty Tucker

Lessor:

Timbro Ranch Cattle Company, LLC
4700 W. 60th Ave. #4
Arvada, CO 80003

SHANNON HEMPELMAN
NOTARY PUBLIC
STATE OF COLORADO
NOTARY ID 20094036024
MY COMMISSION EXPIRES 11/05/2017

WHITING OIL AND GAS CORPORATION

David M. Seery, Vice President

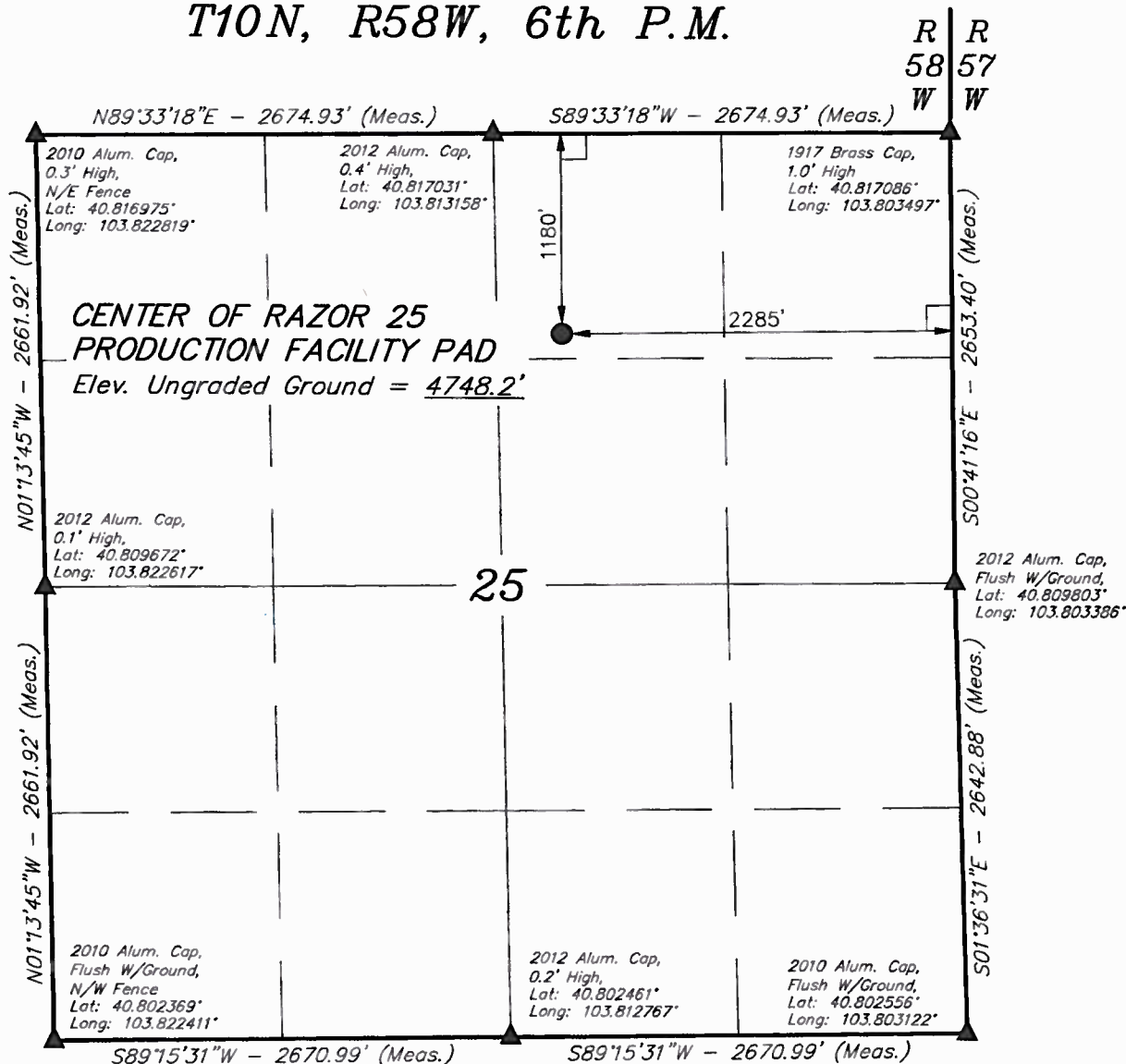
[illegible]

Witness by and official seal.



4-29-17

T10N, R58W, 6th P.M.



LEGEND:

└─┘ = 90° SYMBOL

● = CENTER OF PRODUCTION FACILITY PAD.

▲ = SECTION CORNERS LOCATED.

PDOP = 1.3



NAD 83 (CENTER OF RAZOR 25 PRODUCTION FACILITY PAD)	
LATITUDE = 40°48'49.68" (40.813800)	
LONGITUDE = 103°48'42.12" (103.811700)	
NAD 27 (CENTER OF RAZOR 25 PRODUCTION FACILITY PAD)	
LATITUDE = 40°48'49.73" (40.813814)	
LONGITUDE = 103°48'40.31" (103.811197)	

BASIS OF BEARINGS

BASIS OF BEARINGS IS A G.P.S. OBSERVATION

BASIS OF ELEVATION

SPOT ELEVATION LOCATED AT THE NORTHEAST CORNER OF SECTION 15, T9N, R58W, 6th P.M. TAKEN FROM THE GATEHOOK SPRING, QUADRANGLE, COLORADO, WELD COUNTY, 7.5 MINUTE QUAD (TOPOGRAPHIC MAP) PUBLISHED BY THE UNITED STATES DEPARTMENT OF THE INTERIOR, GEOLOGICAL SURVEY. SAID ELEVATION IS MARKED AS BEING 4679 FEET.



UELS, LLC
Corporate Office * 85 South 200 East
Vernal, UT 84078 * (435) 789-1017

CERTIFICATE

THIS IS TO CERTIFY THAT THE ABOVE PLAT WAS PREPARED FROM FIELD NOTES OF ACTUAL SURVEYS MADE BY ME OR UNDER MY SUPERVISION, AND THAT THE SAME ARE TRUE AND CORRECT TO THE BEST OF MY KNOWLEDGE AND BELIEF.

REGISTERED LAND SURVEYOR
REGISTRATION NO. 28285
STATE OF COLORADO

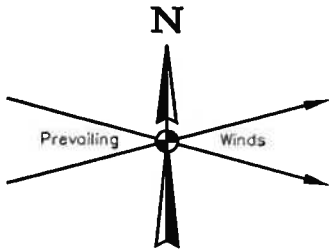
06-03-14

WHITING OIL & GAS CORP.

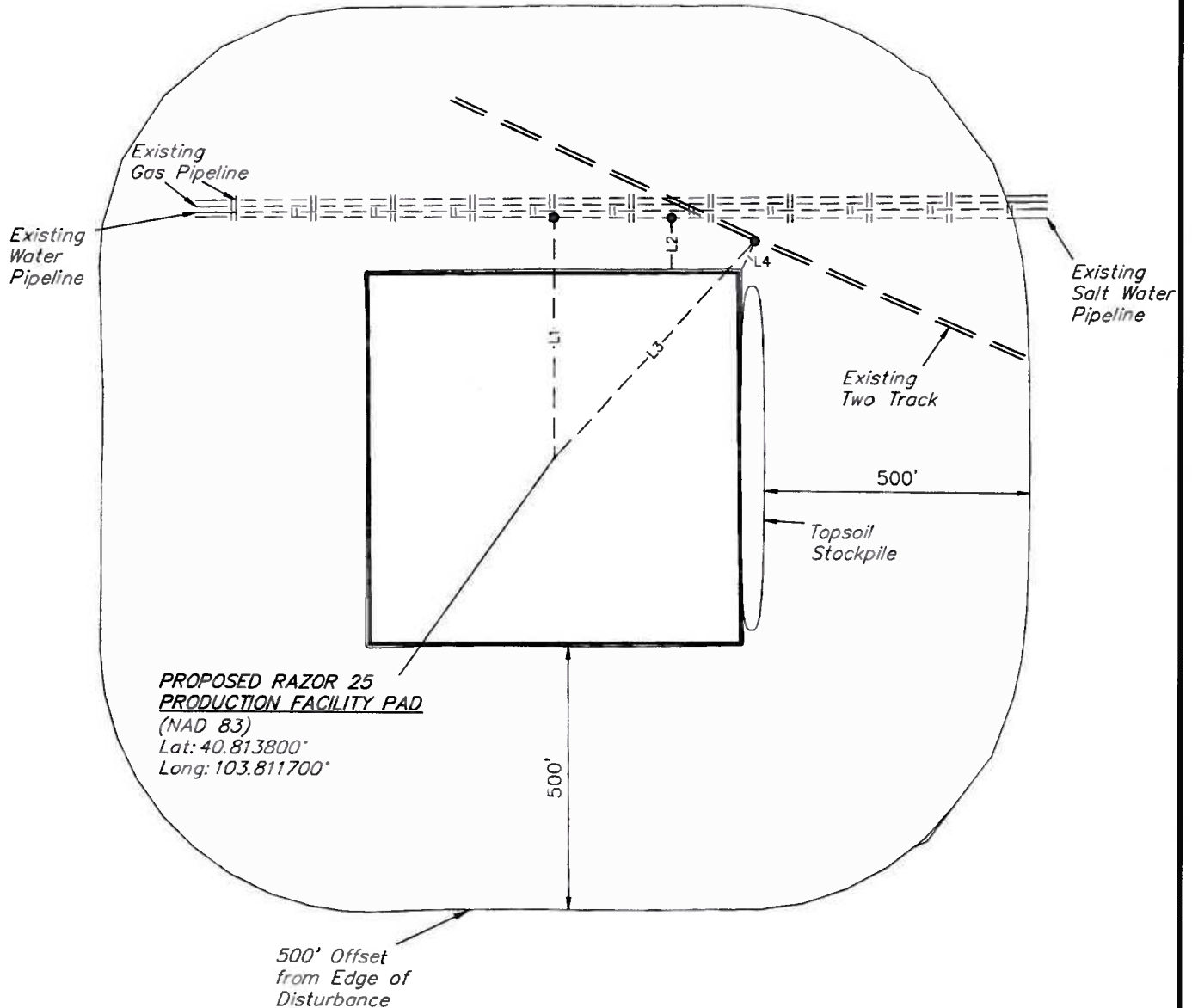
Production Facility Location, CENTER OF RAZOR 25 PRODUCTION FACILITY PAD, located as shown in the NW 1/4 NE 1/4, OF SECTION 25, T10N, R58W, 6th P.M. WELD COUNTY, COLORADO

SURVEYED BY: DARREN SHANKS, D.S.	DATE: 06-02-14
DRAWN BY: K.B.	DATE DRAWN: 06-03-14
SCALE: 1" = 1000'	REVISED: 00-00-00

LOCATION PLAT



LINE TABLE		
LINE	DIRECTION	LENGTH
L1	NORTH	456'
L2	NORTH	98'
L3	N42°E	561'
L4	N25°E	62'



WHITING OIL & GAS CORP.

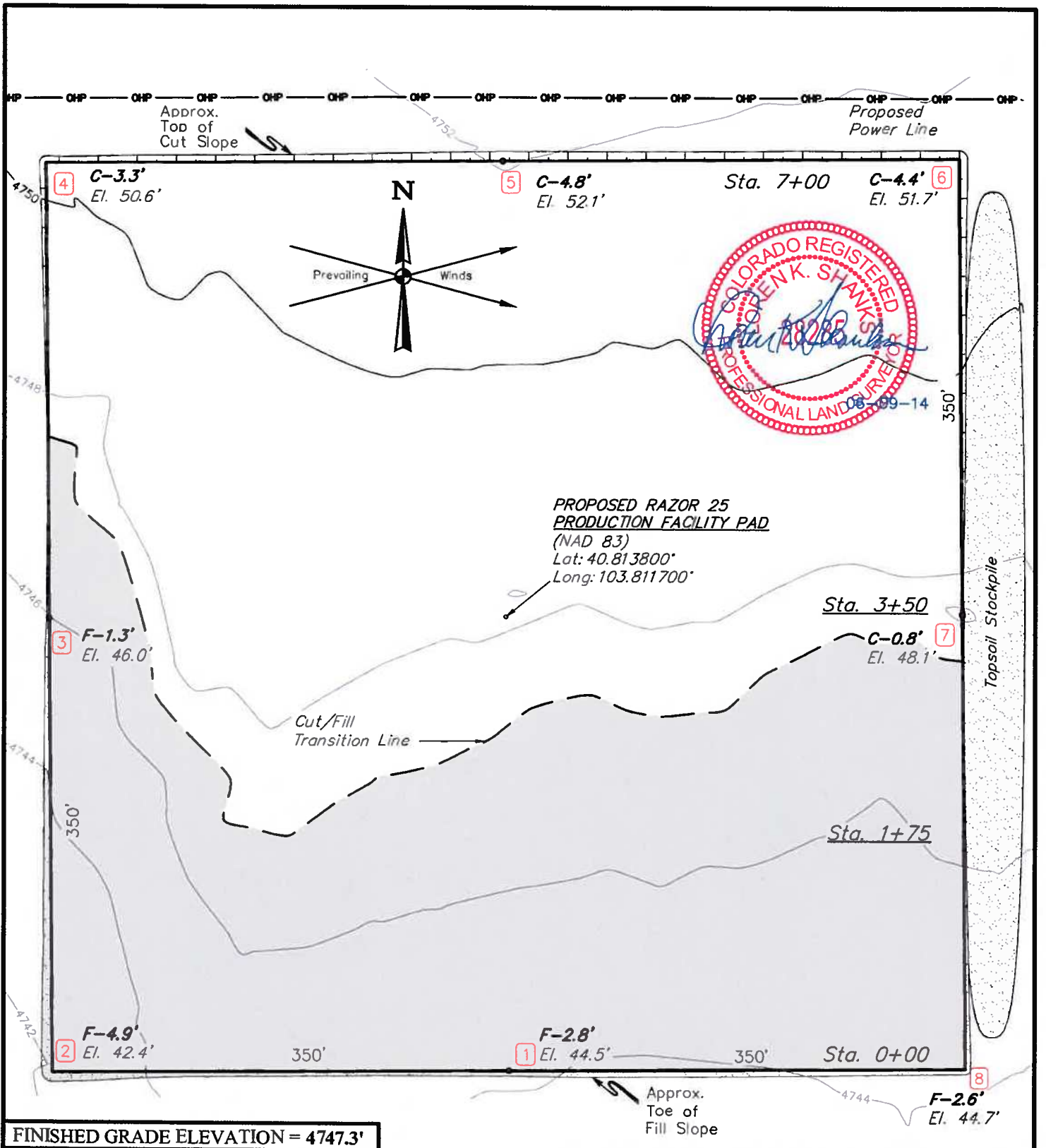
RAZOR 25 PRODUCTION FACILITY PAD
SECTION 25, T10N, R58W, 6th P.M.
1180' FNL 2285' FEL



UELS, LLC
Corporate Office * 85 South 200 East
Vernal, UT 84078 * (435) 789-1017

SURVEYED BY: DARREN SHANKS, D.S.	SURVEY DATE: 05-30-14
DRAWN BY: K.B.	DATE DRAWN: 06-04-14
SCALE: 1" = 300'	REVISED: 00-00-00

LOCATION DRAWING



NOTES:

- Contours shown at 2' intervals.

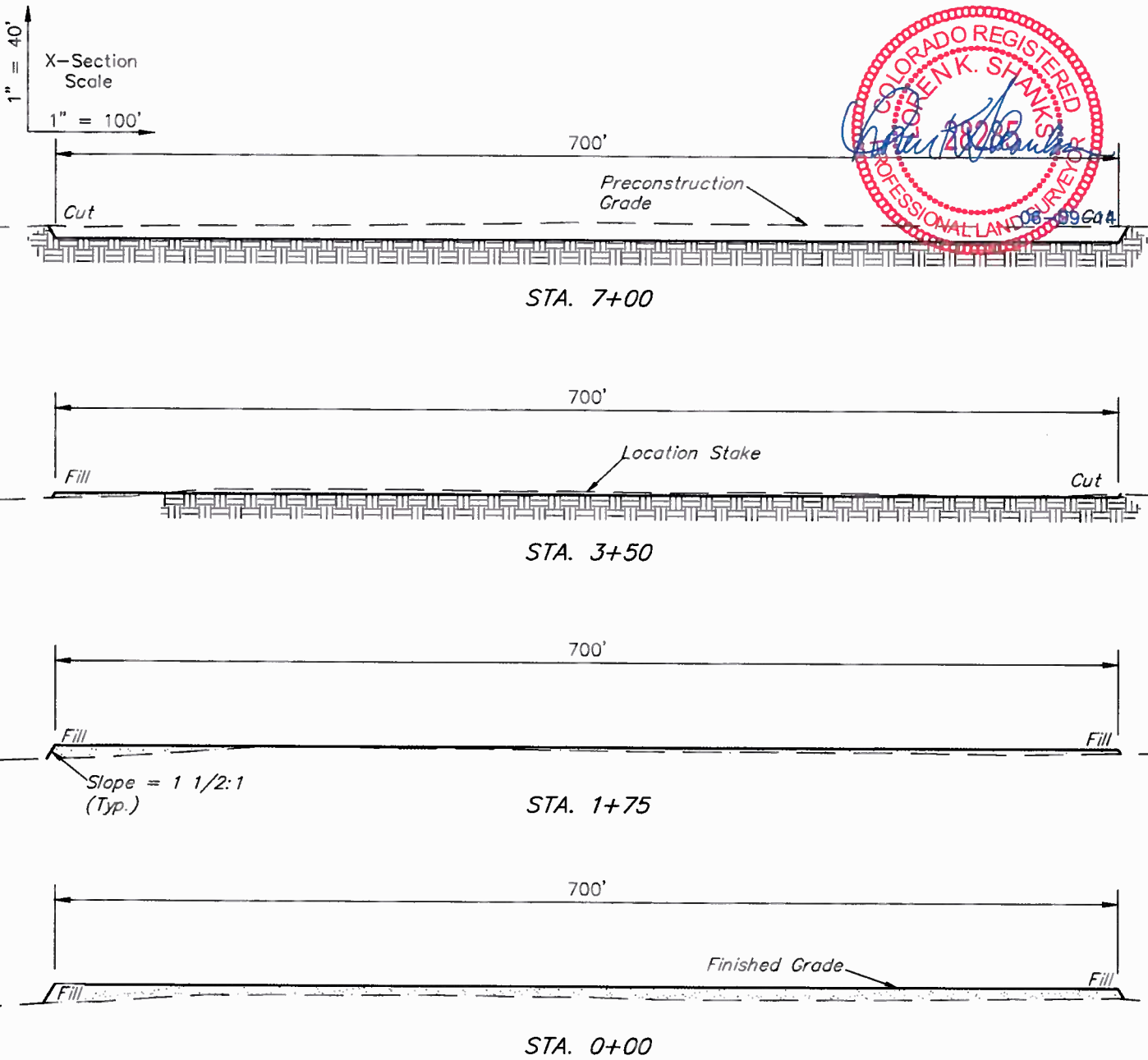
WHITING OIL & GAS CORP.

RAZOR 25 PRODUCTION FACILITY PAD
SECTION 25, T10N, R58W, 6th P.M.
1180' FNL 2285' FEL



UELS, LLC
Corporate Office * 85 South 200 East
Vernal, UT 84078 * (435) 789-1017

DRAWN BY: K.B.	DATE DRAWN: 06-03-14
SCALE: 1" = 100'	REVISED: 00-00-00
CONSTRUCTION LAYOUT	FIGURE #1



APPROXIMATE EARTHWORK QUANTITIES	
(6") TOPSOIL STRIPPING	9,300 Cu. Yds.
REMAINING LOCATION	17,630 Cu. Yds.
TOTAL CUT	26,930 Cu. Yds.
FILL	17,630 Cu. Yds.
EXCESS MATERIAL	9,300 Cu. Yds.
TOPSOIL	9,300 Cu. Yds.
EXCESS UNBALANCE (After Interim Rehabilitation)	0 Cu. Yds.

APPROXIMATE SURFACE DISTURBANCE AREAS		
	DISTANCE	ACRES
PRODUCTION FACILITY PAD DISTURBANCE	NA	±11.530

NOTES:

- Fill quantity includes 10% for compaction.
- Calculations based on 6" of topsoil stripping.
- Topsoil should not be stripped below finished grade on substructure area.

WHITING OIL & GAS CORP.

RAZOR 25 PRODUCTION FACILITY PAD
SECTION 25, T10N, R58W, 6th P.M.
1180' FNL 2285' FEL



UELS, LLC
Corporate Office * 85 South 200 East
Vernal, UT 84078 * (435) 789-1017

DRAWN BY: K.B.	DATE DRAWN: 06-03-14
SCALE: AS SHOWN	REVISED: 00-00-00
CONSTRUCTION LAYOUT CROSS SECTIONS	FIGURE #2