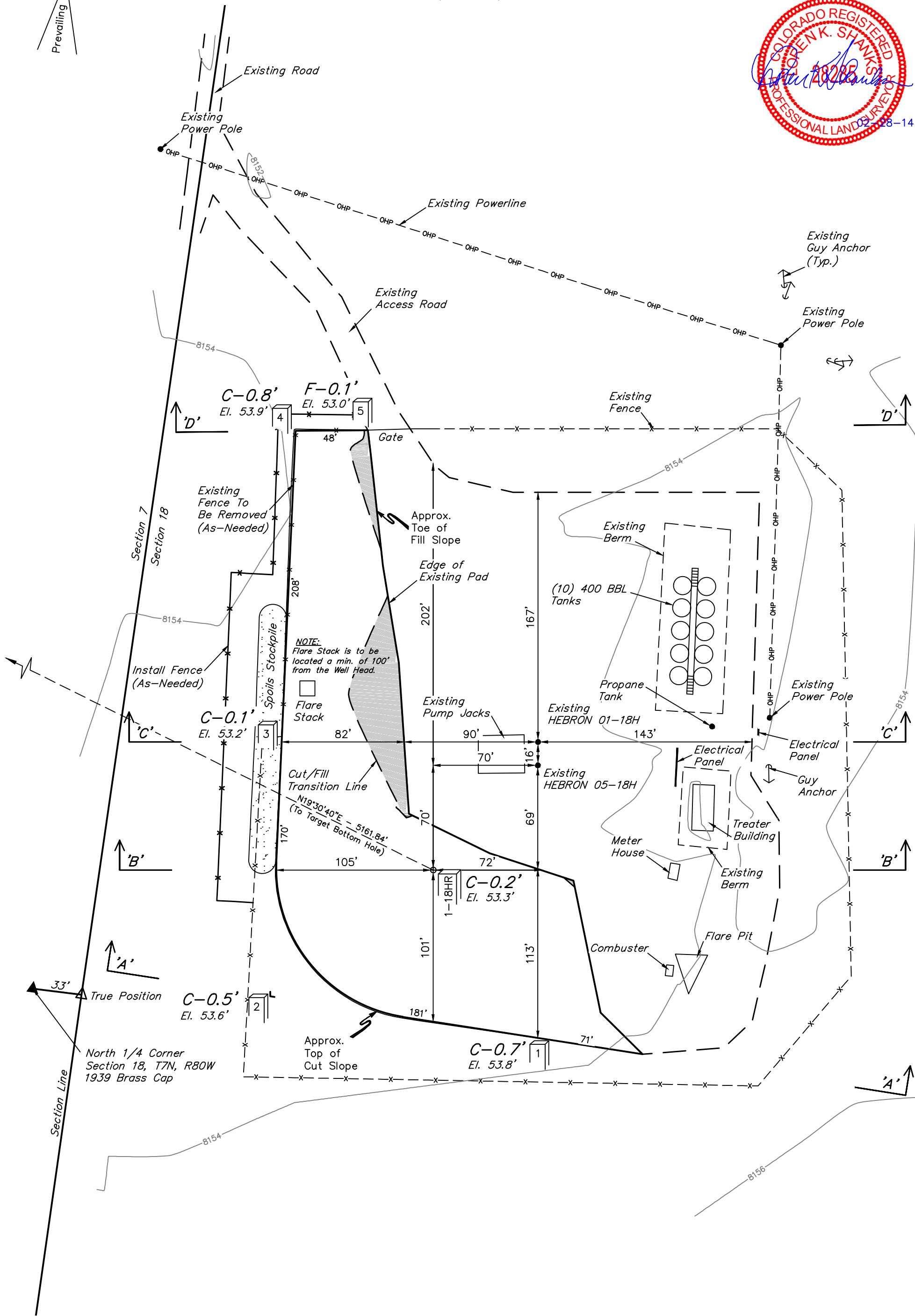


EE3 LLC
CONSTRUCTION LAYOUT FOR

HEBRON 01-18HR ON EXISTING HEBRON 01-18H & 05-18H WELL PAD
SECTION 18, T7N, R80W, 6th P.M.
NW 1/4 NE 1/4

FIGURE #1

SCALE: 1" = 60'
DATE: 02-11-14
DRAWN BY: M.D.
REVISED: 02-28-14



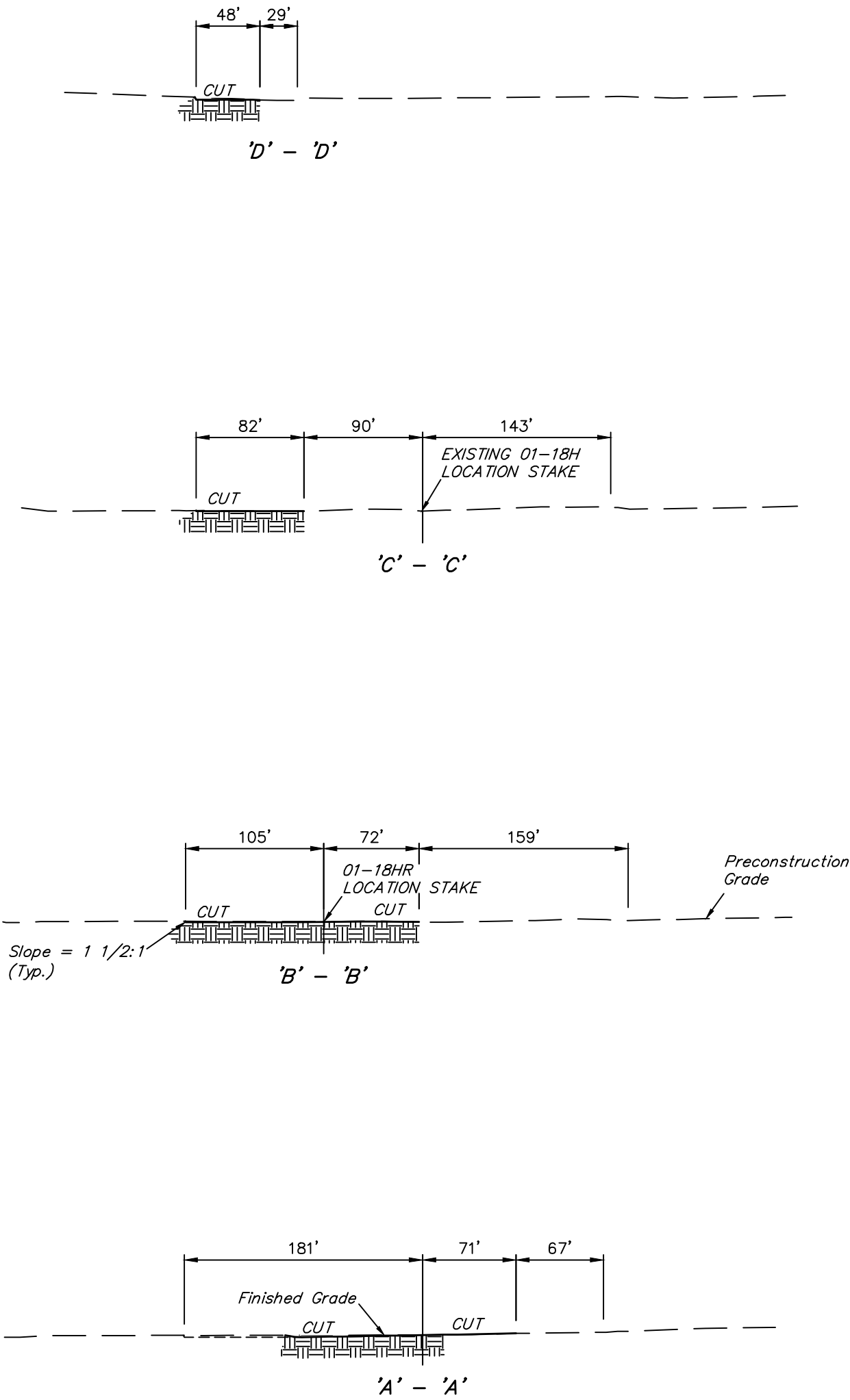
Elev. Ungraded Ground At Loc. Stake = 8153.3'
FINISHED GRADE ELEV. AT LOC. STAKE = 8153.1'

UINTAH ENGINEERING & LAND SURVEYING
85 So. 200 East * Vernal, Utah 84078 * (435) 789-1017

1" = 40'
X-Section
Scale
1" = 100'
DATE: 02-11-14
DRAWN BY: M.D.
REVISED: 02-28-14

EE3 LLC
CONSTRUCTION LAYOUT CROSS SECTIONS FOR
HEBRON 01-18HR ON EXISTING HEBRON 01-18H & 05-18H WELL PAD
SECTION 18, T7N, R80W, 6th P.M.
NW 1/4 NE 1/4

FIGURE #2



NOTE:
Topsoil should not be
Stripped Below Finished
Grade on Substructure Area.

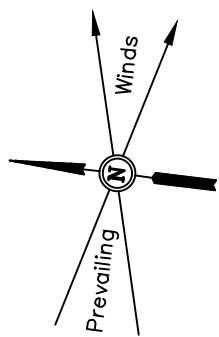
* NOTE:
FILL QUANTITY INCLUDES
5% FOR COMPACTION

APPROXIMATE ACREAGE
EXISTING WELL SITE (FENCED AREA) DISTURBANCE = ± 3.790 ACRES
NEW WELL SITE (FENCED AREA) DISTURBANCE = ± 0.199 ACRES
TOTAL = ± 3.989 ACRES

APPROXIMATE YARDAGES

(6") Topsoil Stripping	=	0 Cu. Yds.	EXCESS MATERIAL	=	340 Cu. Yds.
Remaining Location	=	340 Cu. Yds.	Topsoil	=	0 Cu. Yds.
TOTAL CUT	=	340 CU. YDS.	EXCESS UNBALANCE	=	340 Cu. Yds.
FILL	=	0 CU. YDS.	(After Interim Rehabilitation)		

UINTAH ENGINEERING & LAND SURVEYING
85 So. 200 East * Vernal, Utah 84078 * (435) 789-1017

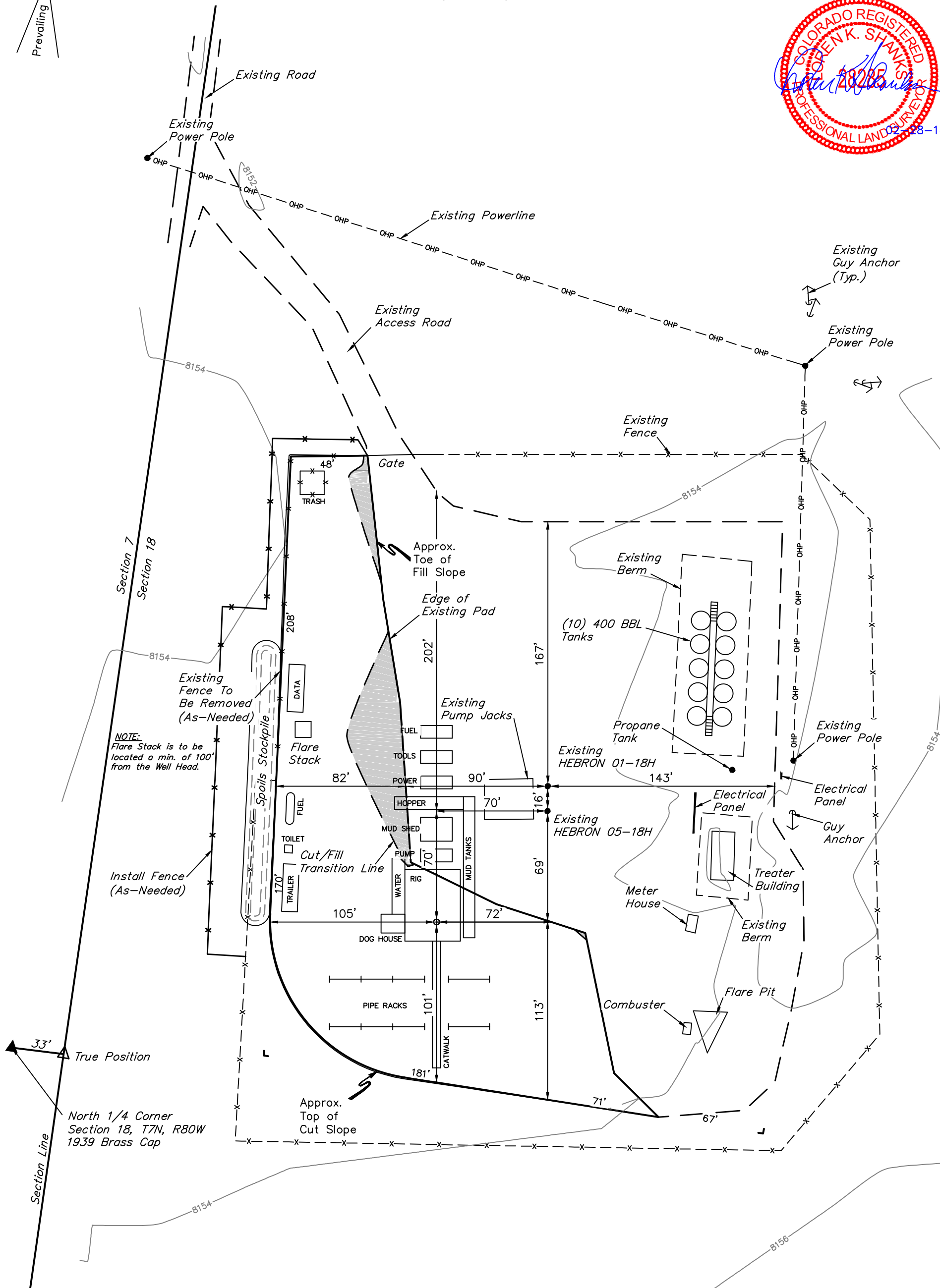


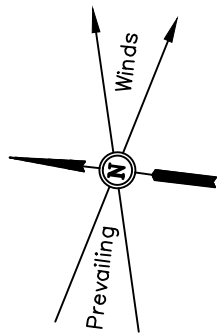
EE3 LLC
TYPICAL RIG LAYOUT FOR

HEBRON 01-18HR ON EXISTING HEBRON 01-18H & 05-18H WELL PAD
SECTION 18, T7N, R80W, 6th P.M.
NW 1/4 NE 1/4

FIGURE #3

SCALE: 1" = 60'
DATE: 02-11-14
DRAWN BY: M.D.
REVISED: 02-28-14





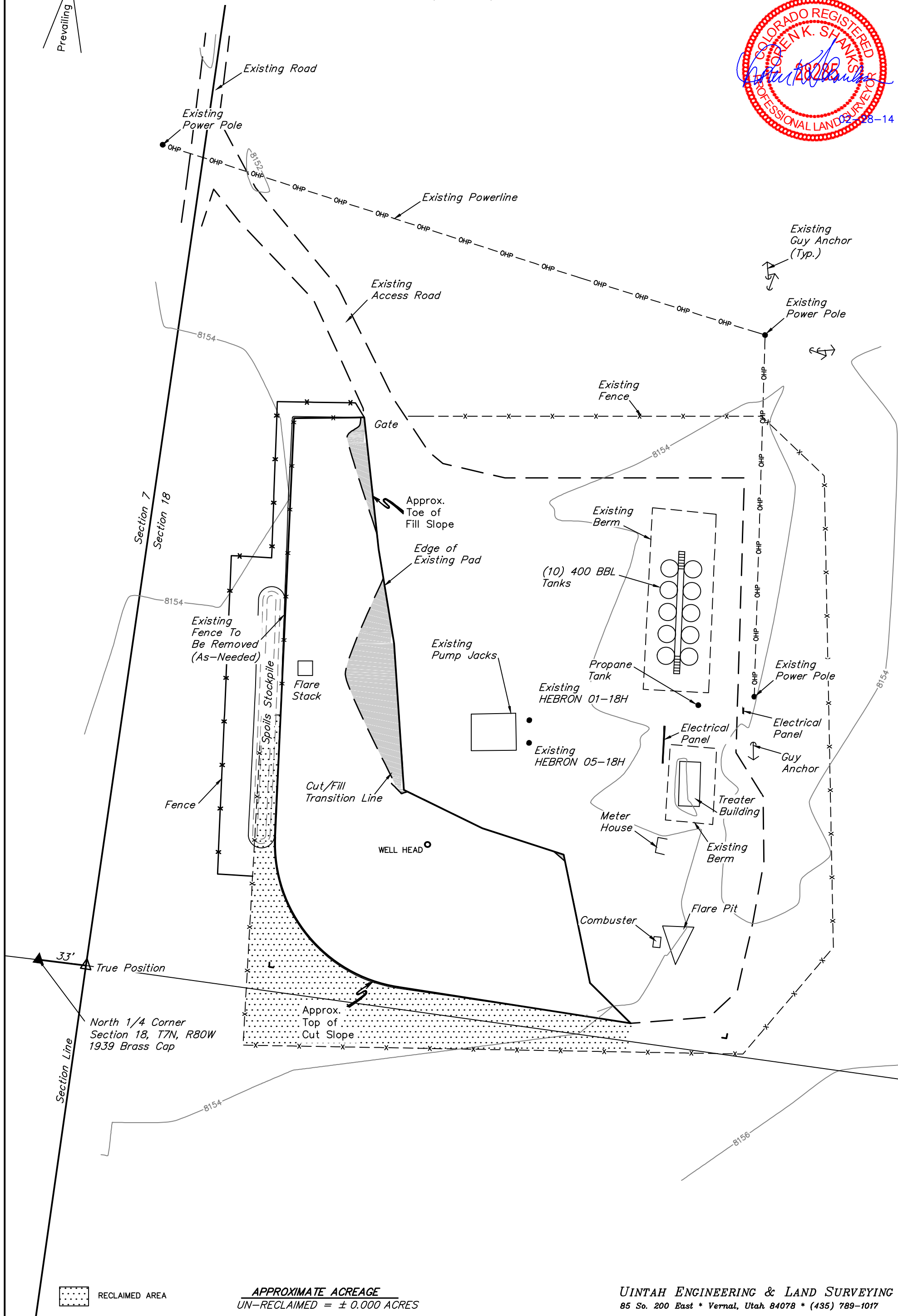
EE3 LLC

RECLAMATION DIAGRAM FOR

HEBRON 01-18HR ON EXISTING HEBRON 01-18H & 05-18H WELL PAD
SECTION 18, T7N, R80W, 6th P.M.
NW 1/4 NE 1/4

FIGURE #4

SCALE: 1" = 60'
DATE: 02-11-14
DRAWN BY: M.D.
REVISED: 02-28-14



RECLAIMED AREA

APPROXIMATE ACREAGE
UN-RECLAIMED = ± 0.000 ACRES

UINTAH ENGINEERING & LAND SURVEYING
85 So. 200 East * Vernal, Utah 84078 * (435) 789-1017