

Map to Accompany
OIL AND GAS LOCATION ASSESSMENT

Area Map

EE3 LLC

Hebron 01-18HR

SHL: 221' FNL 2,419' FEL (NW/4 NE/4)

Sec. 18 T7N R80W

BHL: $\pm 600'$ FNL $\pm 782'$ FEL (NE/4 NE/4)


Sec. 7 T7N R80W

Jackson County, Colorado

Surface: Fee

Mineral Lease: Fee

LEGEND

 Existing Access - Fee

 State Highway

Revised by Upstream Petroleum Management, Inc.

T8N

T7N

**PROPOSED LOCATION:
HEBRON 01-18HR ON
EXISTING HEBRON 01-18H
& 05-18H WELL PAD**

SEE TOPO B

**R
81
W**

**R
80
W**

LEGEND:

 **PROPOSED LOCATION**

N

EE3 LLC

**HEBRON 01-18HR ON EXISTING
HEBRON 01-18H & 05-18H WELL PAD
SECTION 18, T7N, R80W, 6th P.M.
NW 1/4 NE 1/4**



Uintah Engineering & Land Surveying

85 South 200 East Vernal, Utah 84078
(435) 789-1017 * FAX (435) 789-1813

**ACCESS ROAD
MAP**

05
MONTH

28
DAY

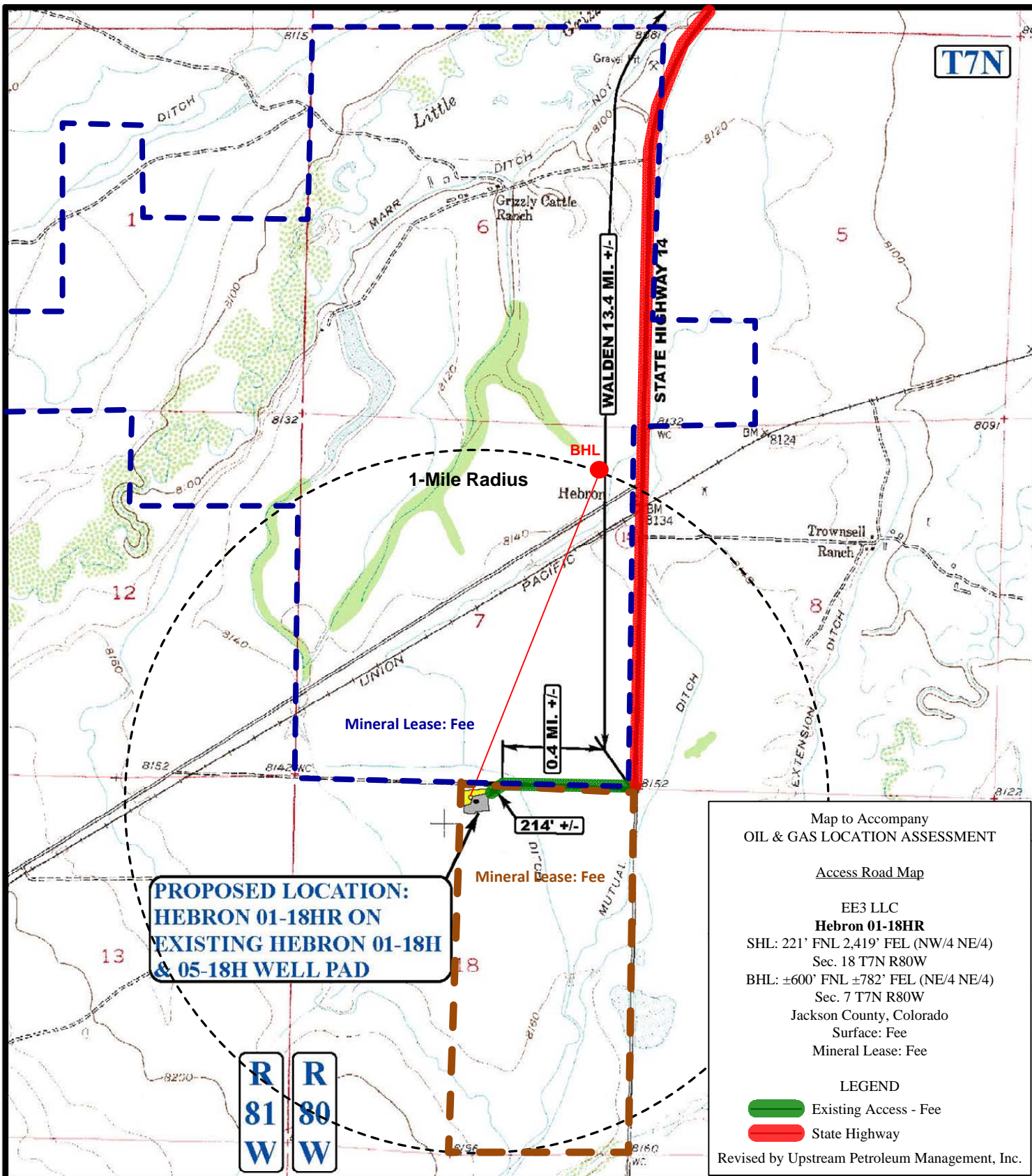
08
YEAR

SCALE: 1:100,000

DRAWN BY: Z.L.

REV: 02-06-14 J.M.F.





LEGEND:

EXISTING ROADS



EE3 LLC

**HEBRON 01-18HR ON EXISTING
HEBRON 01-18H & 05-18H WELL PAD
SECTION 18, T7N, R80W, 6th P.M.
NW 1/4 NE 1/4**



Uintah Engineering & Land Surveying
85 South 200 East Vernal, Utah 84078
(435) 789-1017 * FAX (435) 789-1813

**ACCESS ROAD
MAP**

05 28 08
MONTH DAY YEAR

SCALE: 1"=2000'

DRAWN BY: Z.L.

REV: 02-06-14 J.M.F.

