

**ANADARKO PETROLEUM CORP - EBUS
DO NOT MAIL - PO BOX 4995
THE WOODLANDS, Texas**

SEKICH STATE 39C-17HZ

Majors 42

Post Job Summary **Cement Surface Casing**

Date Prepared: 3/31/2014
Version: 1

Service Supervisor: VIGIL, NICHOLAS

Submitted by: PRUDHOMME, JOSHUA

HALLIBURTON

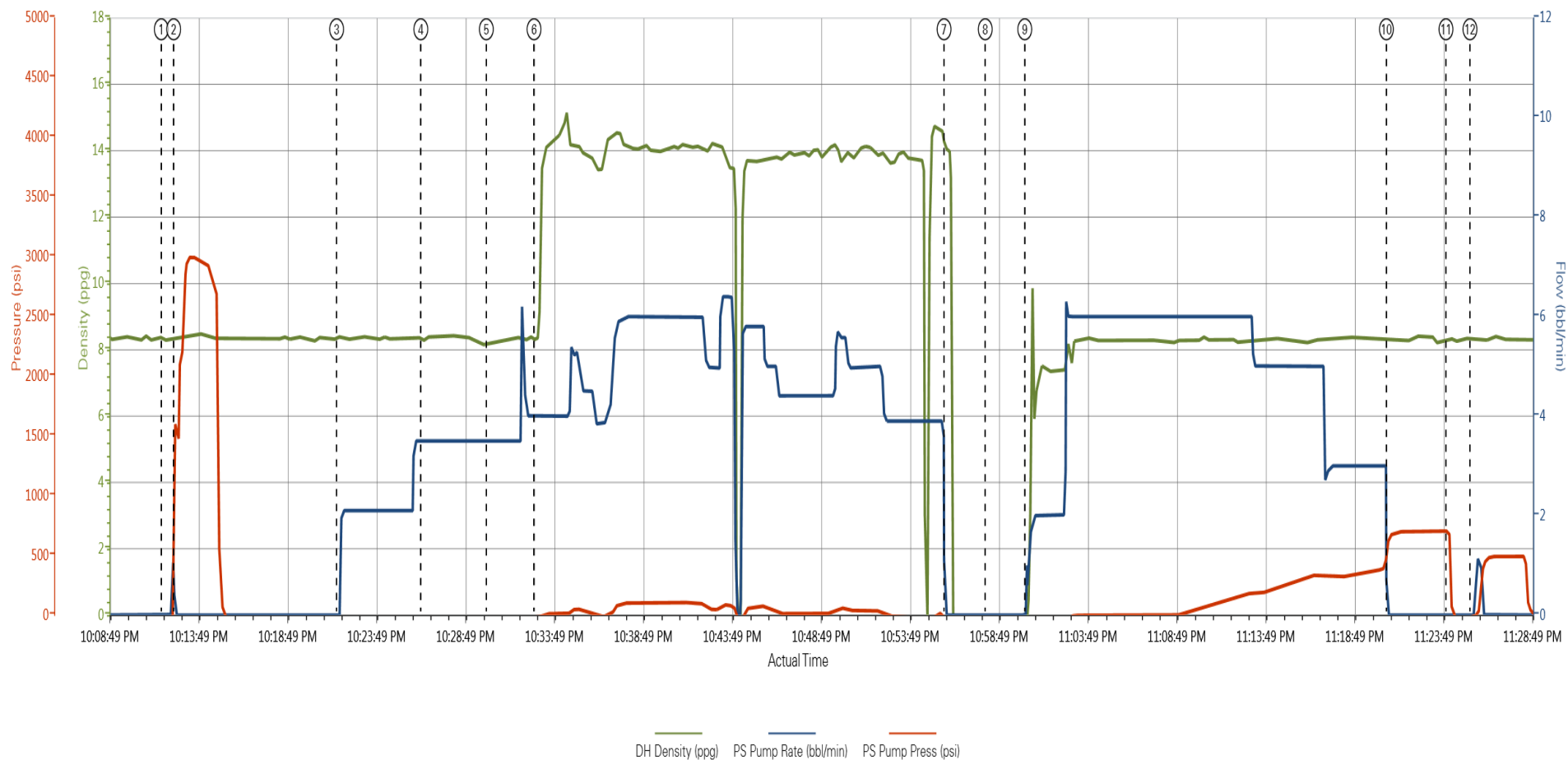
Pumping Schedule

Stage /Plug #	Fluid #	Fluid Type	Fluid Name	Surface Density lbm/gal	Avg Rate bbl/min	Surface Volume	Downhole Volume
1	1	Spacer	Mud Flush	8.33	2.0	12.0 bbl	12.0 bbl
1	1	Spacer	Mud Flush	8.50	3.5	12.0 bbl	12.0 bbl
1	1	Spacer	Mud Flush	8.33	3.5	12.0 bbl	12.0 bbl
1	2	Cement Slurry	SwiftCem B2	14.2	5.0	479.0 sacks	479.0 sacks
1	3	Cement Slurry	G Neat	15.8	1.0	100.0 sacks	100.0 sacks

HALLIBURTON

Data Acquisition

Anadarko Sekich State 39C-17HZ



① Start Job ② Test Lines ③ Water Spacer ④ Mud Flush ⑤ Water Spacer ⑥ 14.2 ppg SwiftCem ⑦ Shutdown ⑧ Drop Top Plug ⑨ Pump Displacement ⑩ Bump Plug ⑪ Check Floats ⑫ Pressure Up Well ⑬ End Job

▼ HALLIBURTON | iCem® Service

Created: 2014-03-29 20:51:43, Version: 3.0.121

Edit

Customer: ANADARKO PETROLEUM CORP -
EBUS

Job Date: 3/29/2014 9:03:32 PM

Well: Sekich State 39C-17HZ

Representative: Nicholas Vigil

Sales Order #: 901231514

Job Type: 9 5/8 Surface

HALLIBURTON

Service Supervisor Reports

Job Log

Date/Time	Chart #	Activity Code	Pump Rate	Cum Vol	Pump		Pressure (psig)	Comments
03/29/2014 20:15		Arrive At Loc						On location time was 2100, Rig was about half way done running casing
03/29/2014 20:20		Assessment Of Location Safety Meeting						Hazard hunt, Rig up safety meeting, Water test
03/29/2014 20:25		Rig-Up Equipment						
03/29/2014 20:45		Rig-Up Completed						
03/29/2014 21:50		Pre-Job Safety Meeting						Held safety meeting with all personnel on location
03/29/2014 22:11		Start Job						
03/29/2014 22:12		Test Lines						Pressure tested lines to 3000 psi
03/29/2014 22:21		Pump Spacer 1	2	10			14.0	Water spacer
03/29/2014 22:26		Pump Spacer 2	3.5	12			16.0	Mud Flush
03/29/2014 22:30		Pump Spacer 1	3.5	10			20.0	Water spacer
03/29/2014 22:32		Pump Cement	5	131			50.0	14.2 ppg SwiftCem (479 sks), weight was verified by scale
03/29/2014 22:55		Shutdown						
03/29/2014 22:58		Drop Top Plug						Plug was pre-loaded
03/29/2014 23:00		Pump Displacement	6	50			98.0	Displaced using fresh water
03/29/2014 23:20		Bump Plug	3	92.4			300.0	Bumped plug 500 psi over final lift bringing our pressure to 800 psi.
03/29/2014 23:24		Check Floats						Floats held
03/29/2014 23:35		Comment						We did not get any cement back to surface. Company man had the rig crew tag the cement to determine where our top was.
03/30/2014 00:30		Wait on HES Materials to Arrive - Start Time						Once we determined how much cement would be needed I sent an empty truck back to the yard to get 100 sks of top out cement
03/30/2014 01:45		Wait on HES Materials to Arrive - End Time						
03/30/2014 02:30		Pump Cement	1	20			80.0	15.8 ppg Top Out Cement (100 sks), weight was verified by scale. We got 3 bbl of cement to surface on the top out.
03/30/2014 03:00		End Job						Rig down safety meeting
03/30/2014 03:15		Rig-Down Equipment						
03/30/2014 03:55		Rig-Down Completed						

The Road to Excellence Starts with Safety

Sold To #: 300466		Ship To #: 3456603		Quote #:		Sales Order #: 901231514		
Customer: ANADARKO PETROLEUM CORP - EBUS				Customer Rep: PORTER, BOB				
Well Name: SEKICH STATE		Well #: 39C-17HZ		API/UWI #: 05-123-39164				
Field:		City (SAP): MEAD		County/Parish: Weld		State: Colorado		
Lat: N 40.222 deg. OR N 40 deg. 13 min. 17.72 secs.				Long: W 104.94 deg. OR W -105 deg. 3 min. 36.943 secs.				
Contractor: Majors		Rig/Platform Name/Num: Majors 42						
Job Purpose: Cement Surface Casing								
Well Type: Development Well				Job Type: Cement Surface Casing				
Sales Person: GREGORY, JON		Srvc Supervisor: VIGIL, NICHOLAS			MBU ID Emp #: 443481			
Job Personnel								
HES Emp Name	Exp Hrs	Emp #	HES Emp Name	Exp Hrs	Emp #	HES Emp Name	Exp Hrs	Emp #
LEONE, BRIAN C	0.0	561735	MASTEL, RYAN Eugene	0.0	561732	SCILEPPI, JOSEPH Dean	0.0	555492
VIGIL, NICHOLAS Joseph	0.0	443481						
Equipment								
HES Unit #	<i>Distance-1 way</i>	HES Unit #	<i>Distance-1 way</i>	HES Unit #	<i>Distance-1 way</i>	HES Unit #	<i>Distance-1 way</i>	
11106651	20 mile	11360865C	20 mile					
Job				Job Times				
Formation Name				Date				
Formation Depth (MD) Top				Time				
Bottom				Time Zone				
Form Type		BHST		Called Out		29 - Mar - 2014 15:30 MST		
Job depth MD 1207. ft		Job Depth TVD 1207. ft		On Location		29 - Mar - 2014 20:15 MST		
Water Depth		Wk Ht Above Floor 4. ft		Job Started		29 - Mar - 2014 22:11 MST		
Job Completed				Job Completed		29 - Mar - 2014 23:29 MST		
Perforation Depth (MD) From				Deparated Loc 30 - Mar - 2014 03:00 MST				
To								

Fluid Data									
Stage/Plug #: 1									
Fluid #	Stage Type	Fluid Name	Qty	Qty uom	Mixing Density lbm/gal	Yield ft ³ /sk	Mix Fluid Gal/sk	Rate bbl/min	Total Mix Fluid Gal/sk
1	Spacer	Fresh Water Spacer	10.0	bbl	8.33			2.0	
1	Spacer	Mud Flush	12.0	bbl	8.5			3.5	
1	Spacer	Fresh Water Spacer	10.0	bbl	8.33			3.5	
2	SwiftCem B2	SWIFTCEN (TM) SYSTEM (452990)	479	sacks	14.2	1.54	7.64	5.0	7.64
3	G Neat	HALCEN (TM) SYSTEM (452986)	100	sacks	15.8	1.15	5.0	1.0	5.0
Calculated Values		Pressures		Volumes					
Displacement		Shut In: Instant		Lost Returns		Cement Slurry		Pad	
Top Of Cement		5 Min		Cement Returns		Actual Displacement		Treatment	
Frac Gradient		15 Min		Spacers		Load and Breakdown		Total Job	
Rates									
Circulating		Mixing		Displacement		Avg. Job			
Cement Left in Pipe		Amount	0 ft	Reason	Shoe Joint				
Frac Ring # 1 @	ID	Frac ring # 2 @	ID	Frac Ring # 3 @	ID	Frac Ring # 4 @	ID		
The Information Stated Herein Is Correct				Customer Representative Signature					

