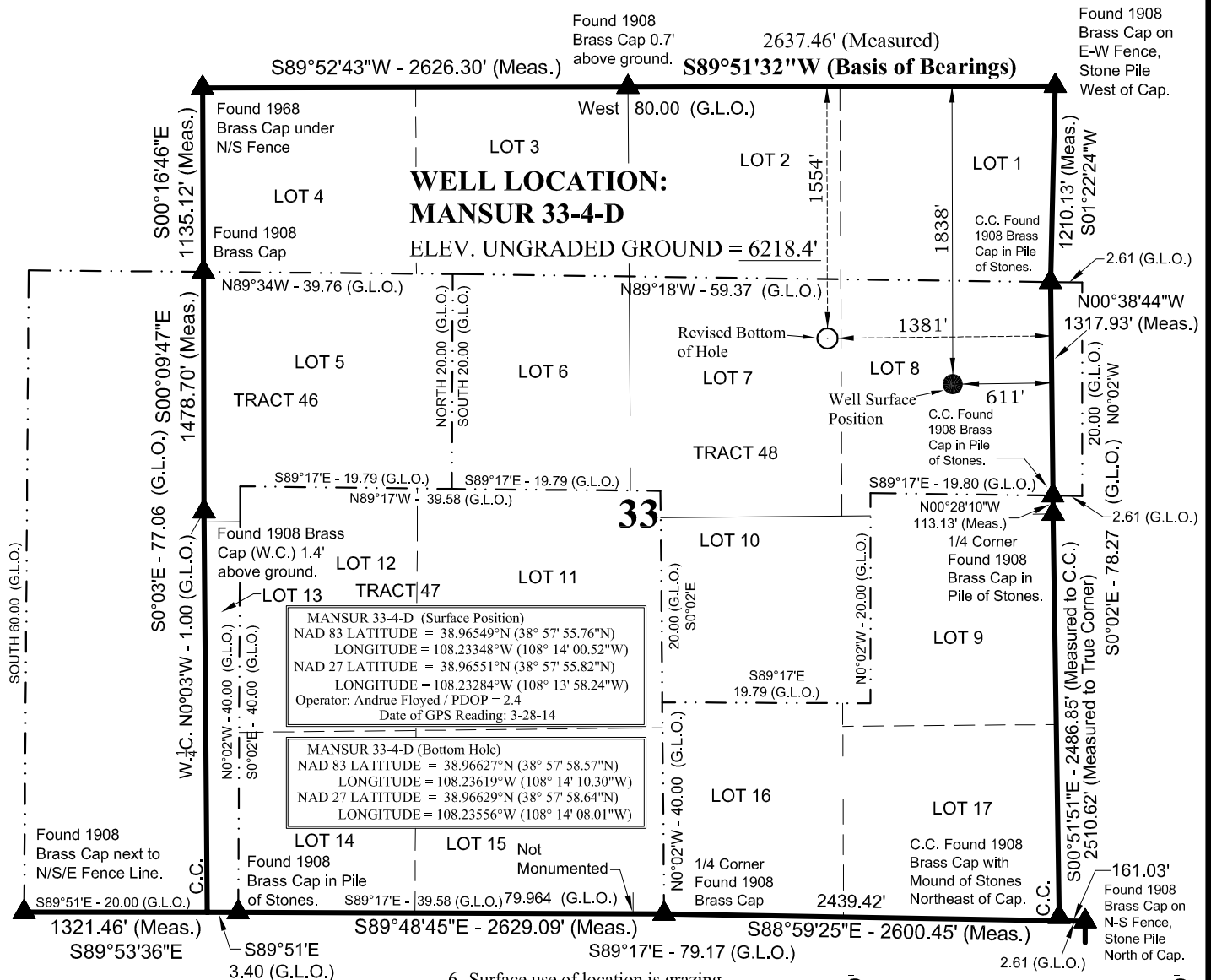


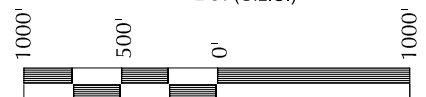
T12S, R97W, 6th P.M.



NOTES:

▲ = Section Corners Located

1. Well footages are measured at right angles to the Section Lines.
 2. Government Land Office (G.L.O.) distances are shown in feet or chains. 1 chain = 66 feet.
 3. The Bottom of hole bears N69°55'29"W 822.99' from the Surface Position
 4. Bearings are based on Global Positioning Satellite observations.
 5. Basis of Elevation is a Bench Mark B141 1934 Brass Cap Located in the SW 1/4 of Section 33, T12S, R99W, 6th P.M. The Elevation of this Bench Mark is Shown on the Whitewater 7.5 Min. Quadrangle as being 4934'.
 7. See Addendum to Legal Plat For Existing Improvements within 500' of the Well Pad.
- THIS IS TO
PREPARED
MADE BY I
THE SAME
MY KNOW



SCALE

SURVEYOR'S CERTIFICATE

THIS IS TO CERTIFY THAT THE ABOVE PLAT WAS
PREPARED FROM FIELD NOTES OF ACTUAL SURVEYS
MADE BY ME OR UNDER MY SUPERVISION AND THAT
THE SAME ARE TRUE AND CORRECT TO THE BEST OF
MY KNOWLEDGE AND BELIEF.

PROFESSIONAL LAND SURVEYOR
REGISTRATION No. 38230 AND
STATE OF COLORADO

FRAM OPERATING, LLC

REVISED LEGAL PLAT

MANSUR 33-4-D
WELL PLAT

**1554' FNL, 1381' FEL (Bottom Hole)
LOT 7 OF SECTION 33, T12S, R97W,
6th P.M., MESA COUNTY, COLORADO.**



TIMBERLINE

(435) 789-1365

ENGINEERING & LAND SURVEYING, INC.

209 NORTH 300 WEST - VERNAL, UTAH 84078

DATE SURVEYED: 3-28-14	SURVEYED BY: A.F.	SHEET 4 OF 14
DATE DRAWN: 3-31-14	DRAWN BY: M.W.W.	
SCALE: 1" = 1000'	Date Last Revised: 6-11-14 M.W.W.	