

**ANADARKO PETROLEUM CORP - EBUS
DO NOT MAIL - PO BOX 4995
THE WOODLANDS, Texas**

NRC 26C-4HZ

Majors 42

Post Job Summary **Cement Surface Casing**

Date Prepared: 3/26/2014
Version: 1

Service Supervisor: WHIPPLE, WESLEY

Submitted by: PRUDHOMME, JOSHUA

HALLIBURTON

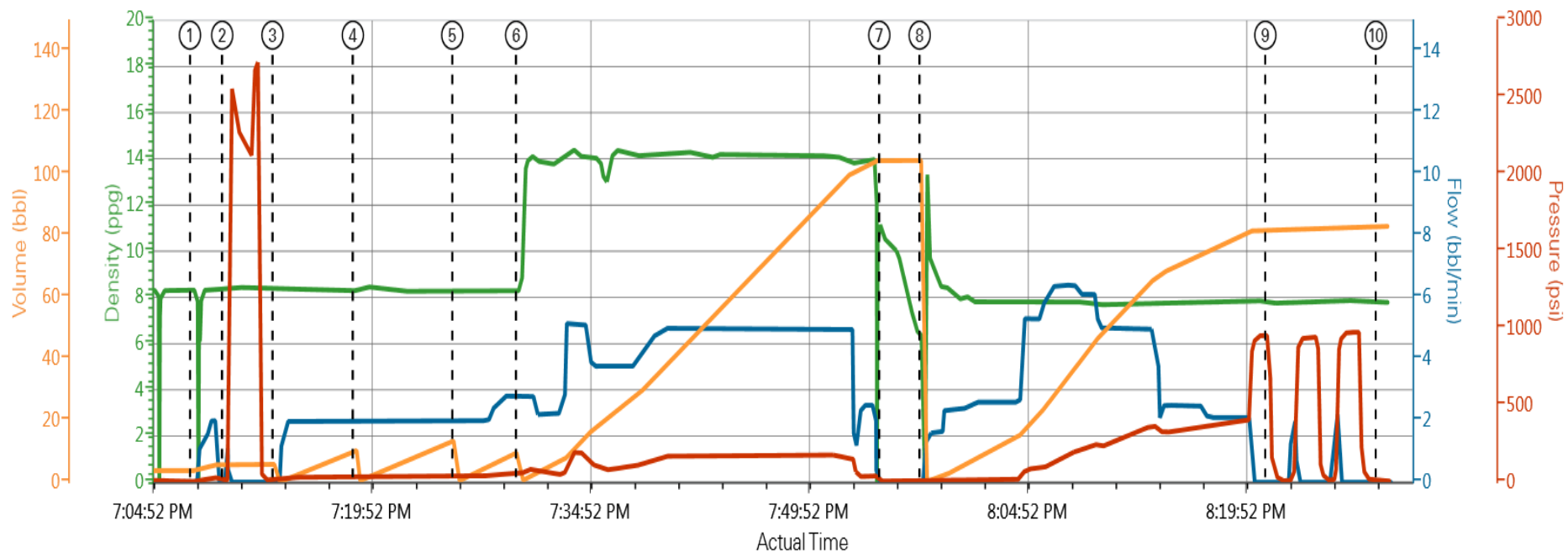
Pumping Schedule

Stage /Plug #	Fluid #	Fluid Type	Fluid Name	Surface Density lbm/gal	Avg Rate bbl/min	Surface Volume	Downhole Volume
1	1	Spacer	Fresh Water Spacer	8.33	2.0	10.0 bbl	10.0 bbl
1	1	Spacer	Mud Flush	8.50	2.0	12.0 bbl	12.0 bbl
1	1	Spacer	Mud Flush	8.33	3.0	10.0 bbl	10.0 bbl
1	2	Cement Slurry	SwiftCem B2	14.2	5.0	381.0 sacks	381.0 sacks

HALLIBURTON

Data Acquisition

Anadarko NRC 26C-4HZ Surface



DH Density (ppg) 7.82 Comb Pump Rate (bbl/min) 0 Pump Stg Tot (bbl) 83.1 PS Pump Press (psi) 8

- | | | | |
|------------------------------|----------------------------------|------------------------------------|-------------------------|
| ① Start Job 8.34;0;3.8;5 | ④ Pump Spacer 2 8.28;2;10.3;35 | ⑦ Drop Top Plug 10.74;0;104.5;6 | ⑩ End Job 7.83;0;83.1;9 |
| ② Test Lines 8.32;0;5.8;13 | ⑤ Pump Spacer 1 8.27;2;13.8;40 | ⑧ Pump Displacement 6.45;0;104.5;3 | |
| ③ Pump Spacer 1 8.34;0;5.8;9 | ⑥ Pump Lead Cement 8.26;2.8;0.61 | ⑨ Other 7.82;0;81.7;954 | |

HALLIBURTON

Service Supervisor Reports

Job Log

Date/Time	Chart #	Activity Code	Pump Rate	Cum Vol	Pump		Pressure (psig)	Comments
03/11/2014 12:30		Call Out						Crew called out by ARS office at 1230 and requested on location at 1630
03/11/2014 16:30		Crew Leave Yard						Crew pre tripped all equipment in yard to ensure working quality. Held a pre journey safety meeting to discuss route being traveled, road conditions, and potential hazards that could occur while driving. All drivers fit for duty
03/11/2014 16:40		Arrive At Loc						Crew arrived on location. Met with Anadarko Company rep to discuss job details.
03/11/2014 16:45		Rig-Up Equipment						Crew performed site assessment and hazard hunt. Commenced rig-up of all equipment
03/11/2014 17:45		Rig-Up Completed						Crew completed rig-up
03/11/2014 18:00		Casing on Bottom						Rig landed casing on bottom and began circulating
03/11/2014 18:30		Safety Meeting						Held a pre job safety meeting with all hands on location to discuss job process, procedures and potential hazards that could occur while cementing
03/11/2014 19:07		Start Job						Start Job
03/11/2014 19:09		Test Lines					2500.0	Pressure test pumps and lines to 2500psi. Found no leaks in iron and pressure held.
03/11/2014 19:13		Pump Spacer 1	2	10			35.0	Pump Fresh Water spacer
03/11/2014 19:19		Pump Spacer 2	2	12			40.0	Pump Mud Flush spacer
03/11/2014 19:25		Pump Spacer 1	3	10			80.0	Pump Fresh Water spacer
03/11/2014 19:29		Pump Cement	5	104			150.0	Mix and pump 381sks of SwiftCem at 14.2ppg. Density verified by pressurized mud scales
03/11/2014 19:54		Shutdown						Shutdown to wash pumps and lines
03/11/2014 19:55		Drop Top Plug						Drop top plug from HES plug container. Witnessed by Anadarko Company Rep
03/11/2014 19:57		Pump Displacement	5	78			240.0	Pump Fresh Water displacement. Received Cement 70bbls into displacement.
03/11/2014 20:19		Bump Plug					900.0	Bump plug 500psi over final pumping pressure.
03/11/2014 20:21		Check Floats						Released pressure back to pump truck, received 1bbl back and floats held. pressured up an additional 2 times as per Company Rep
03/11/2014 20:28		End Job						End Job
03/11/2014 20:30		Rig-Down Equipment						Crew commenced rig down of all equipment
03/11/2014 21:30		Crew Leave Location						Held a pre journey safety meeting to discuss route being traveled, road conditions, and potential hazards that could occur while driving. All drivers fit for duty

The Road to Excellence Starts with Safety

Sold To #: 300466		Ship To #: 3358580		Quote #:		Sales Order #: 901174394	
Customer: ANADARKO PETROLEUM CORP - EBUS				Customer Rep: Porter, Bob			
Well Name: NRC			Well #: 26C-4HZ		API/UWI #: 05-123-38998		
Field: WATTENBERG		City (SAP): IONE		County/Parish: Weld		State: Colorado	
Contractor: Majors			Rig/Platform Name/Num: Majors 42				
Job Purpose: Cement Surface Casing							
Well Type: Development Well				Job Type: Cement Surface Casing			
Sales Person: GREGORY, JON			Srv Supervisor: WHIPPLE, WESLEY			MBU ID Emp #: 518611	

Job Personnel

HES Emp Name	Exp Hrs	Emp #	HES Emp Name	Exp Hrs	Emp #	HES Emp Name	Exp Hrs	Emp #
BROOM, KENDALL L	4.8	524682	Horton, Jamar	4.8	55555	STIELER, KENT	4.8	554541
WHIPPLE, WESLEY Morgan	4.8	518611						

Job

Formation Name					Job Times			
Formation Depth (MD)	Top	Bottom			Called Out	Date	Time	Time Zone
Form Type		BHST			On Location	11 - Mar - 2014	16:40	MST
Job depth MD	1061. ft	Job Depth TVD	1061. ft		Job Started	11 - Mar - 2014	19:07	MST
Water Depth		Wk Ht Above Floor	5. ft		Job Completed	11 - Mar - 2014	20:28	MST
Perforation Depth (MD)	From	To			Departed Loc	11 - Mar - 2014	21:30	MST

Sales/Rental/3rd Party (HES)

Description	Qty	Qty uom	Depth	Supplier
CMT CASING EQUIPMENT BOM	1	JOB		
MILEAGE FOR CEMENTING CREW,ZI	20	MI		
ZI FUEL SURCHG-CARS/PICKUPS<1 1/2TON	20	MI		
KIT,HALL WELD-A	1	EA		
CNTRLZR, 9 5/8"x13 3/4',#500-0963-1375	8	EA		
BASKET - CEMENT - 9-5/8 CSG X 12-1/4	1	EA		
PLUG,CMTG,TOP,9 5/8,HWE,8.16 MIN/9.06 MA	1	EA		
COLLAR-STOP-9 5/8"-FRICTION-HINGED	2	EA		

Fluid Data									
Stage/Plug #: 1									
Fluid #	Stage Type	Fluid Name	Qty	Qty uom	Mixing Density lbm/gal	Yield ft ³ /sk	Mix Fluid Gal/sk	Rate bbl/min	Total Mix Fluid Gal/sk
1	Mud Flush		10.0	bbl	8.33			2.0	
2	Mud Flush		12.0	bbl	8.5			2.0	
1	Mud Flush		10.0	bbl	8.33			3.0	
3	SwiftCem B2	SWIFTCem (TM) SYSTEM (452990)	381.0	sacks	14.2	1.54	7.66	5.0	7.66
7.66 Gal		FRESH WATER							
Calculated Values		Pressures		Volumes					
Displacement		Shut In: Instant		Lost Returns		Cement Slurry		Pad	
Top Of Cement		5 Min		Cement Returns 8.0		Actual Displacement 78.0		Treatment	
Frac Gradient		15 Min		Spacers 32.0		Load and Breakdown		Total Job	
Rates									
Circulating		Mixing		Displacement		Avg. Job			
Cement Left In Pipe		Amount	0 ft	Reason	Shoe Joint				
Frac Ring # 1 @	ID	Frac ring # 2 @	ID	Frac Ring # 3 @	ID	Frac Ring # 4 @	ID		
The Information Stated Herein Is Correct				Customer Representative Signature					

