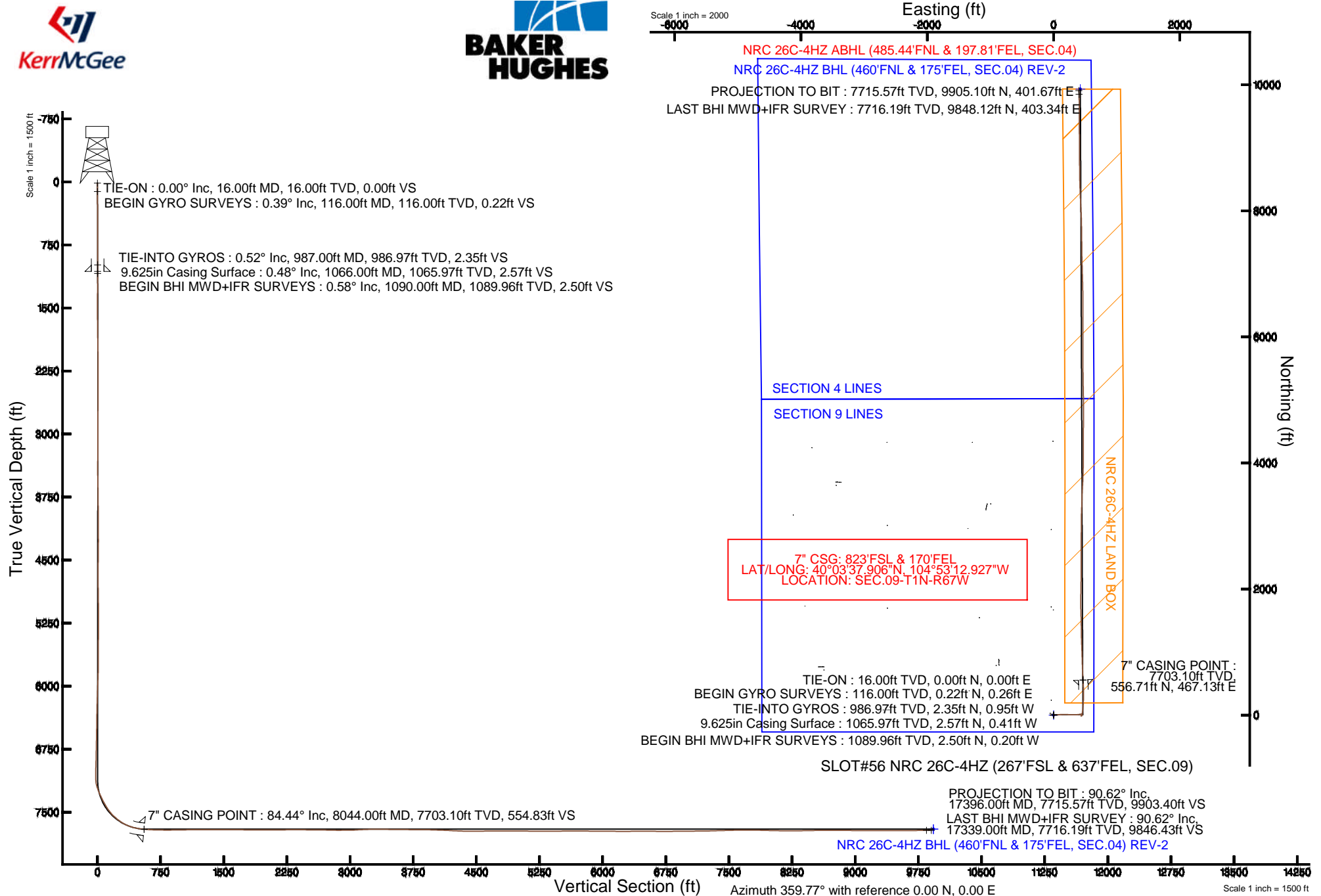


KERR-MCGEE OIL & GAS ONSHORE LP

Location: COLORADO Slot: SLOT#56 NRC 26C-4HZ (267'FSL & 637'FEL, SEC.09)
 Field: WELD COUNTY (KERR MCGEE) Well: NRC 26C-4HZ
 Facility: SEC.09-T1N-R67W Wellbore: NRC 26C-4HZ PWB

Plot reference wellpath is NRC 26C-4HZ (REV-B.0) PWP

True vertical depths are referenced to XTREME 24 (16' RKB) (RKB)	Grid System: NAD83 / Lambert Colorado SP, Northern Zone (501), US feet
Measured depths are referenced to XTREME 24 (16' RKB) (RKB)	North Reference: True north
XTREME 24 (16' RKB) (RKB) to Mean Sea Level: 5062 feet	Scale: True distance
Mean Sea Level to Mud line (At Slot: SLOT#56 NRC 26C-4HZ (267'FSL & 637'FEL, SEC.09)): 0 feet	Depths are in feet
Coordinates are in feet referenced to Slot.	Created by: wilsje02 on 4/30/2014





Actual Wellpath Report

NRC 26C-4HZ AWP

Page 1 of 6



REFERENCE WELLPATH IDENTIFICATION

Operator	KERR-MCGEE OIL & GAS ONSHORE LP	Slot	SLOT#56 NRC 26C-4HZ (267'FSL & 637'FEL, SEC.09)
Area	COLORADO	Well	NRC 26C-4HZ
Field	WELD COUNTY (KERR MCGEE)	Wellbore	NRC 26C-4HZ AWB
Facility	SEC.09-T1N-R67W		

REPORT SETUP INFORMATION

Projection System	NAD83 / Lambert Colorado SP, Northern Zone (501), US feet	Software System	WellArchitect® 4.0.0
North Reference	True	User	Wilsjef02
Scale	0.999962	Report Generated	4/30/2014 at 1:12:48 PM
Convergence at slot	n/a	Database/Source file	WellArchitectDB/NRC_26C-4HZ_AWB.xml

WELLPATH LOCATION

	Local coordinates		Grid coordinates		Geographic coordinates	
	North[ft]	East[ft]	Easting[US ft]	Northing[US ft]	Latitude	Longitude
Slot Location	-3349.63	1049.16	3171138.31	1264929.45	40°03'32.404"N	104°53'18.935"W
Facility Reference Pt			3170066.25	1268271.69	40°04'05.506"N	104°53'32.428"W
Field Reference Pt			3197771.84	1268891.29	40°04'09.600"N	104°47'36.000"W

WELLPATH DATUM

Calculation method	Minimum curvature	XTREME 24 (16' RKB) (RKB) to Facility Vertical Datum	5062.00ft
Horizontal Reference Pt	Slot	XTREME 24 (16' RKB) (RKB) to Mean Sea Level	5062.00ft
Vertical Reference Pt	XTREME 24 (16' RKB) (RKB)	XTREME 24 (16' RKB) (RKB) to Mud Line at Slot (SLOT#56 NRC 26C-4HZ (267'FSL & 637'FEL, SEC.09))	5062.00ft
MD Reference Pt	XTREME 24 (16' RKB) (RKB)	Section Origin	N 0.00, E 0.00 ft
Field Vertical Reference	Mean Sea Level	Section Azimuth	2.32°

Actual Wellpath Report

NRC 26C-4HZ AWP

Page 2 of 6

REFERENCE WELLPATH IDENTIFICATION

Operator	KERR-MCGEE OIL & GAS ONSHORE LP	Slot	SLOT#56 NRC 26C-4HZ (267'FSL & 637'FEL, SEC.09)
Area	COLORADO	Well	NRC 26C-4HZ
Field	WELD COUNTY (KERR MCGEE)	Wellbore	NRC 26C-4HZ AWB
Facility	SEC.09-T1N-R67W		

WELLPATH DATA (141 stations) † = interpolated/extrapolated station

MD [ft]	Inclination [°]	Azimuth [°]	TVD [ft]	Vert Sect [ft]	North [ft]	East [ft]	Latitude	Longitude	DLS [°/100ft]	Comments
0.00†	0.000	49.920	0.00	0.00	0.00	0.00	40°03'32.404"N	104°53'18.935"W	0.00	
16.00	0.000	49.920	16.00	0.00	0.00	0.00	40°03'32.404"N	104°53'18.935"W	0.00	TIE-ON
116.00	0.390	49.920	116.00	0.23	0.22	0.26	40°03'32.406"N	104°53'18.932"W	0.39	BEGIN GYRO SURVEYS
216.00	0.580	355.100	216.00	0.96	0.94	0.48	40°03'32.413"N	104°53'18.929"W	0.48	
316.00	0.760	307.180	315.99	1.84	1.85	-0.09	40°03'32.422"N	104°53'18.936"W	0.57	
416.00	0.790	271.450	415.98	2.21	2.27	-1.31	40°03'32.426"N	104°53'18.952"W	0.48	
516.00	0.420	235.830	515.98	1.98	2.08	-2.30	40°03'32.425"N	104°53'18.965"W	0.51	
616.00	0.140	167.680	615.97	1.65	1.75	-2.58	40°03'32.421"N	104°53'18.968"W	0.39	
716.00	0.220	118.370	715.97	1.44	1.54	-2.39	40°03'32.419"N	104°53'18.966"W	0.17	
816.00	0.300	86.610	815.97	1.39	1.47	-1.96	40°03'32.418"N	104°53'18.960"W	0.16	
916.00	0.550	41.810	915.97	1.78	1.84	-1.37	40°03'32.422"N	104°53'18.953"W	0.40	
987.00	0.520	37.260	986.97	2.31	2.35	-0.95	40°03'32.427"N	104°53'18.947"W	0.07	TIE-INTO GYROS
1090.00	0.580	115.540	1089.96	2.49	2.50	-0.20	40°03'32.429"N	104°53'18.938"W	0.68	BEGIN BHI MWD+IFR SURVEYS
1184.00	0.620	99.830	1183.96	2.23	2.20	0.73	40°03'32.426"N	104°53'18.926"W	0.18	
1278.00	2.880	98.800	1277.91	1.90	1.76	3.57	40°03'32.421"N	104°53'18.889"W	2.40	
1372.00	5.060	96.140	1371.68	1.36	0.95	10.02	40°03'32.413"N	104°53'18.806"W	2.33	
1467.00	7.050	90.710	1466.14	1.24	0.43	20.02	40°03'32.408"N	104°53'18.678"W	2.18	
1561.00	6.780	85.250	1559.46	2.09	0.82	31.32	40°03'32.412"N	104°53'18.532"W	0.76	
1655.00	7.710	86.270	1652.71	3.44	1.69	43.14	40°03'32.421"N	104°53'18.380"W	1.00	
1752.00	9.590	84.790	1748.60	5.18	2.85	57.68	40°03'32.432"N	104°53'18.193"W	1.95	
1845.00	10.260	86.470	1840.21	7.04	4.06	73.66	40°03'32.444"N	104°53'17.988"W	0.78	
2032.00	10.000	83.630	2024.30	11.19	6.89	106.42	40°03'32.472"N	104°53'17.566"W	0.30	
2218.00	10.970	89.450	2207.19	14.52	8.85	140.17	40°03'32.491"N	104°53'17.132"W	0.77	
2404.00	10.010	88.820	2390.08	16.39	9.35	174.03	40°03'32.496"N	104°53'16.697"W	0.52	
2591.00	8.370	94.800	2574.68	16.80	8.55	203.84	40°03'32.488"N	104°53'16.313"W	1.01	
2684.00	6.970	91.470	2666.85	16.59	7.84	216.23	40°03'32.481"N	104°53'16.154"W	1.58	
2776.00	9.940	98.100	2757.84	15.87	6.57	229.67	40°03'32.469"N	104°53'15.981"W	3.39	
2960.00	9.810	87.150	2939.13	15.69	5.11	261.05	40°03'32.455"N	104°53'15.578"W	1.02	
3144.00	10.170	88.510	3120.34	18.18	6.32	292.95	40°03'32.466"N	104°53'15.167"W	0.23	
3328.00	10.600	94.290	3301.33	18.68	5.47	326.06	40°03'32.458"N	104°53'14.742"W	0.61	
3512.00	11.310	86.590	3481.98	19.90	5.28	360.95	40°03'32.456"N	104°53'14.293"W	0.88	
3695.00	9.230	81.990	3662.05	24.33	8.39	393.40	40°03'32.487"N	104°53'13.876"W	1.22	
3787.00	8.210	87.680	3752.98	26.18	9.69	407.27	40°03'32.500"N	104°53'13.697"W	1.45	
3879.00	6.760	84.530	3844.20	27.45	10.47	419.23	40°03'32.507"N	104°53'13.543"W	1.64	
3971.00	6.690	88.410	3935.56	28.55	11.13	429.97	40°03'32.514"N	104°53'13.405"W	0.50	
4063.00	6.020	86.830	4027.00	29.37	11.55	440.15	40°03'32.518"N	104°53'13.274"W	0.75	
4155.00	3.590	88.100	4118.67	30.05	11.91	447.85	40°03'32.522"N	104°53'13.175"W	2.64	
4247.00	2.070	61.130	4210.56	31.12	12.81	452.18	40°03'32.531"N	104°53'13.120"W	2.15	
4339.00	0.660	198.700	4302.54	31.47	13.11	453.46	40°03'32.534"N	104°53'13.103"W	2.82	
4608.00	1.880	249.870	4571.48	28.30	10.12	448.82	40°03'32.504"N	104°53'13.163"W	0.58	
4693.00	0.220	82.060	4656.46	27.80	9.67	447.68	40°03'32.499"N	104°53'13.178"W	2.47	
4949.00	1.130	34.450	4912.44	30.02	11.82	449.59	40°03'32.521"N	104°53'13.153"W	0.39	
5204.00	0.060	346.840	5167.42	32.28	14.02	450.98	40°03'32.543"N	104°53'13.135"W	0.43	
5460.00	0.870	246.720	5423.42	31.57	13.38	449.17	40°03'32.536"N	104°53'13.158"W	0.34	
5629.00	1.440	259.570	5592.38	30.55	12.49	445.90	40°03'32.527"N	104°53'13.200"W	0.37	



Actual Wellpath Report

NRC 26C-4HZ AWP

Page 3 of 6



REFERENCE WELLPATH IDENTIFICATION

Operator	KERR-MCGEE OIL & GAS ONSHORE LP	Slot	SLOT#56 NRC 26C-4HZ (267'FSL & 637'FEL, SEC.09)
Area	COLORADO	Well	NRC 26C-4HZ
Field	WELD COUNTY (KERR MCGEE)	Wellbore	NRC 26C-4HZ AWB
Facility	SEC.09-T1N-R67W		

WELLPATH DATA (141 stations) † = interpolated/extrapolated station

MD [ft]	Inclination [°]	Azimuth [°]	TVD [ft]	Vert Sect [ft]	North [ft]	East [ft]	Latitude	Longitude	DLS [°/100ft]	Comments
5800.00	1.390	264.990	5763.33	29.81	11.92	441.72	40°03'32.522"N	104°53'13.254"W	0.08	
5885.00	2.000	205.460	5848.30	28.31	10.49	440.06	40°03'32.508"N	104°53'13.276"W	2.08	
6055.00	2.170	184.210	6018.19	22.37	4.60	438.55	40°03'32.449"N	104°53'13.295"W	0.46	
6226.00	1.760	188.910	6189.09	16.52	-1.22	437.90	40°03'32.392"N	104°53'13.303"W	0.26	
6396.00	1.010	222.850	6359.04	12.79	-4.90	436.48	40°03'32.356"N	104°53'13.322"W	0.64	
6566.00	1.740	119.040	6529.01	10.49	-7.25	437.72	40°03'32.332"N	104°53'13.306"W	1.30	
6736.00	1.470	140.020	6698.94	7.72	-10.17	441.37	40°03'32.303"N	104°53'13.259"W	0.38	
6906.00	1.450	166.840	6868.89	4.03	-13.94	443.26	40°03'32.266"N	104°53'13.234"W	0.40	
7077.00	1.770	183.950	7039.82	-0.69	-18.68	443.57	40°03'32.219"N	104°53'13.230"W	0.34	
7162.00	5.020	15.720	7124.74	1.62	-16.41	444.49	40°03'32.242"N	104°53'13.219"W	7.96	
7247.00	18.810	12.050	7207.70	18.82	0.66	448.38	40°03'32.410"N	104°53'13.169"W	16.24	
7332.00	24.400	9.640	7286.70	49.77	31.39	454.19	40°03'32.714"N	104°53'13.094"W	6.66	
7417.00	27.070	7.260	7363.27	86.46	67.89	459.57	40°03'33.075"N	104°53'13.025"W	3.37	
7502.00	31.840	6.050	7437.26	128.13	109.40	464.38	40°03'33.485"N	104°53'12.963"W	5.65	
7587.00	39.560	4.500	7506.24	177.62	158.76	468.87	40°03'33.973"N	104°53'12.905"W	9.14	
7672.00	49.400	1.570	7566.82	237.09	218.15	471.89	40°03'34.560"N	104°53'12.866"W	11.82	
7758.00	56.810	0.190	7618.41	305.80	286.87	472.91	40°03'35.239"N	104°53'12.853"W	8.71	
7843.00	66.900	0.040	7658.45	380.59	361.72	473.05	40°03'35.979"N	104°53'12.851"W	11.87	
7928.00	76.640	358.910	7685.01	461.13	442.35	472.29	40°03'36.775"N	104°53'12.861"W	11.53	
7998.00	82.310	356.810	7697.80	529.71	511.09	469.71	40°03'37.455"N	104°53'12.894"W	8.62	
8044.00†	84.439	356.724	7703.10	575.18	556.71	467.13	40°03'37.906"N	104°53'12.927"W	4.63	7" CASING POINT
8100.00	87.030	356.620	7707.27	630.75	612.46	463.89	40°03'38.456"N	104°53'12.969"W	4.63	
8186.00	88.610	357.570	7710.54	716.33	698.28	459.54	40°03'39.305"N	104°53'13.025"W	2.14	
8271.00	89.320	358.050	7712.08	801.05	783.20	456.29	40°03'40.144"N	104°53'13.067"W	1.01	
8356.00	90.640	358.290	7712.10	885.82	868.16	453.57	40°03'40.983"N	104°53'13.102"W	1.58	
8440.00	90.670	358.210	7711.14	969.61	952.11	451.01	40°03'41.813"N	104°53'13.134"W	0.10	
8611.00	91.200	358.100	7708.35	1140.13	1123.00	445.50	40°03'43.502"N	104°53'13.205"W	0.32	
8696.00	90.180	358.050	7707.33	1224.89	1207.95	442.65	40°03'44.341"N	104°53'13.242"W	1.20	
8781.00	89.930	359.630	7707.25	1309.73	1292.93	440.93	40°03'45.181"N	104°53'13.264"W	1.88	
8951.00	90.030	358.270	7707.31	1479.43	1462.89	437.81	40°03'46.861"N	104°53'13.304"W	0.80	
9036.00	89.440	359.060	7707.70	1564.26	1547.87	435.83	40°03'47.700"N	104°53'13.330"W	1.16	
9121.00	89.450	357.900	7708.52	1649.06	1632.83	433.58	40°03'48.540"N	104°53'13.359"W	1.36	
9207.00	89.380	359.450	7709.40	1734.88	1718.80	431.59	40°03'49.390"N	104°53'13.384"W	1.80	
9292.00	89.850	0.180	7709.97	1819.80	1803.80	431.32	40°03'50.230"N	104°53'13.388"W	1.02	
9377.00	89.410	0.640	7710.52	1904.75	1888.80	431.92	40°03'51.069"N	104°53'13.380"W	0.75	
9462.00	89.820	0.840	7711.09	1989.71	1973.79	433.02	40°03'51.909"N	104°53'13.366"W	0.54	
9632.00	90.590	1.290	7710.49	2159.67	2143.76	436.18	40°03'53.589"N	104°53'13.325"W	0.52	
9811.00	90.340	0.300	7709.03	2338.60	2322.73	438.67	40°03'55.358"N	104°53'13.293"W	0.57	
9997.00	89.080	359.620	7709.97	2524.43	2508.72	438.54	40°03'57.196"N	104°53'13.295"W	0.77	
10090.00	89.820	0.440	7710.87	2617.35	2601.72	438.58	40°03'58.115"N	104°53'13.294"W	1.19	
10277.00	88.490	359.660	7713.63	2804.18	2788.69	438.75	40°03'59.962"N	104°53'13.292"W	0.82	
10370.00	90.250	0.550	7714.65	2897.10	2881.68	438.92	40°04'00.881"N	104°53'13.290"W	2.12	
10463.00	90.400	0.240	7714.12	2990.04	2974.68	439.56	40°04'01.800"N	104°53'13.281"W	0.37	
10556.00	92.960	0.960	7711.39	3082.95	3067.62	440.53	40°04'02.719"N	104°53'13.269"W	2.86	
10649.00	92.880	0.610	7706.66	3175.80	3160.49	441.80	40°04'03.637"N	104°53'13.252"W	0.39	

Actual Wellpath Report

NRC 26C-4HZ AWP

Page 4 of 6

REFERENCE WELLPATH IDENTIFICATION			
Operator	KERR-MCGEE OIL & GAS ONSHORE LP	Slot	SLOT#56 NRC 26C-4HZ (267'FSL & 637'FEL, SEC.09)
Area	COLORADO	Well	NRC 26C-4HZ
Field	WELD COUNTY (KERR MCGEE)	Wellbore	NRC 26C-4HZ AWB
Facility	SEC.09-T1N-R67W		

WELLPATH DATA (141 stations)

MD [ft]	Inclination [°]	Azimuth [°]	TVD [ft]	Vert Sect [ft]	North [ft]	East [ft]	Latitude	Longitude	DLS [°/100ft]	Comments
10742.00	91.420	2.340	7703.17	3268.72	3253.39	444.20	40°04'04.555"N	104°53'13.222"W	2.43	
10834.00	88.730	1.760	7703.05	3360.71	3345.32	447.49	40°04'05.463"N	104°53'13.179"W	2.99	
10926.00	89.560	1.430	7704.42	3452.69	3437.28	450.05	40°04'06.372"N	104°53'13.146"W	0.97	
11018.00	89.780	2.260	7704.95	3544.68	3529.23	453.01	40°04'07.281"N	104°53'13.108"W	0.93	
11109.00	89.280	3.880	7705.70	3635.67	3620.09	457.88	40°04'08.178"N	104°53'13.045"W	1.86	
11201.00	88.670	2.540	7707.34	3727.64	3711.93	463.03	40°04'09.086"N	104°53'12.979"W	1.60	
11293.00	89.660	1.050	7708.68	3819.62	3803.87	465.92	40°04'09.995"N	104°53'12.942"W	1.94	
11385.00	90.030	1.790	7708.93	3911.61	3895.84	468.20	40°04'10.903"N	104°53'12.913"W	0.90	
11477.00	87.910	0.540	7710.59	4003.57	3987.80	470.07	40°04'11.812"N	104°53'12.889"W	2.67	
11569.00	88.330	1.010	7713.60	4095.49	4079.74	471.31	40°04'12.721"N	104°53'12.873"W	0.68	
11661.00	87.380	359.760	7717.05	4187.37	4171.67	471.93	40°04'13.629"N	104°53'12.865"W	1.71	
11753.00	86.770	359.050	7721.74	4279.13	4263.55	470.97	40°04'14.537"N	104°53'12.877"W	1.02	
11845.00	88.950	0.720	7725.18	4370.97	4355.47	470.79	40°04'15.446"N	104°53'12.879"W	2.98	
11937.00	90.150	0.140	7725.90	4462.92	4447.46	471.48	40°04'16.355"N	104°53'12.870"W	1.45	
12029.00	90.710	0.700	7725.21	4554.86	4539.46	472.15	40°04'17.264"N	104°53'12.862"W	0.86	
12213.00	90.460	0.300	7723.33	4738.76	4723.44	473.76	40°04'19.082"N	104°53'12.841"W	0.26	
12304.00	89.810	359.970	7723.12	4829.69	4814.44	473.97	40°04'19.981"N	104°53'12.838"W	0.80	
12481.00	90.330	359.510	7722.90	5006.51	4991.44	473.17	40°04'21.730"N	104°53'12.848"W	0.39	
12566.00	88.670	358.780	7723.64	5091.37	5076.42	471.90	40°04'22.570"N	104°53'12.865"W	2.13	
12737.00	90.000	358.790	7725.63	5262.03	5247.37	468.28	40°04'24.260"N	104°53'12.911"W	0.78	
12822.00	89.870	359.360	7725.72	5346.90	5332.36	466.91	40°04'25.099"N	104°53'12.929"W	0.69	
12992.00	90.760	359.300	7724.79	5516.66	5502.34	464.92	40°04'26.779"N	104°53'12.955"W	0.52	
13162.00	90.270	359.980	7723.26	5686.46	5672.33	463.85	40°04'28.459"N	104°53'12.968"W	0.49	
13247.00	89.130	0.030	7723.71	5771.39	5757.33	463.86	40°04'29.299"N	104°53'12.968"W	1.34	
13417.00	90.210	0.200	7724.68	5941.26	5927.32	464.20	40°04'30.979"N	104°53'12.964"W	0.64	
13587.00	88.820	359.530	7726.12	6111.09	6097.31	463.80	40°04'32.659"N	104°53'12.969"W	0.91	
13757.00	90.310	0.810	7727.41	6280.96	6267.29	464.30	40°04'34.339"N	104°53'12.962"W	1.16	
13927.00	90.310	0.030	7726.49	6450.86	6437.29	465.55	40°04'36.019"N	104°53'12.946"W	0.46	
14097.00	89.480	359.240	7726.81	6620.67	6607.28	464.47	40°04'37.698"N	104°53'12.960"W	0.67	
14268.00	90.150	358.620	7727.36	6791.37	6778.25	461.27	40°04'39.388"N	104°53'13.001"W	0.53	
14438.00	90.710	358.530	7726.08	6961.00	6948.19	457.04	40°04'41.067"N	104°53'13.055"W	0.33	
14608.00	90.430	358.460	7724.39	7130.61	7118.12	452.58	40°04'42.747"N	104°53'13.113"W	0.17	
14694.00	90.950	358.500	7723.36	7216.41	7204.08	450.30	40°04'43.596"N	104°53'13.142"W	0.61	
14779.00	91.440	359.290	7721.58	7301.24	7289.05	448.66	40°04'44.436"N	104°53'13.163"W	1.09	
14949.00	91.690	359.180	7716.94	7470.93	7458.97	446.39	40°04'46.115"N	104°53'13.192"W	0.16	
15120.00	90.700	359.420	7713.37	7641.66	7629.92	444.30	40°04'47.804"N	104°53'13.219"W	0.60	
15205.00	89.600	358.960	7713.15	7726.53	7714.91	443.10	40°04'48.644"N	104°53'13.235"W	1.40	
15290.00	89.720	359.130	7713.66	7811.39	7799.90	441.68	40°04'49.484"N	104°53'13.253"W	0.24	
15460.00	88.270	357.150	7716.64	7980.89	7969.77	436.17	40°04'51.163"N	104°53'13.324"W	1.44	
15630.00	89.190	357.410	7720.40	8150.19	8139.53	428.10	40°04'52.841"N	104°53'13.427"W	0.56	
15800.00	90.700	357.540	7720.57	8319.58	8309.36	420.61	40°04'54.519"N	104°53'13.524"W	0.89	
15970.00	91.260	359.060	7717.66	8489.13	8479.26	415.57	40°04'56.198"N	104°53'13.589"W	0.95	
16141.00	90.400	359.290	7715.18	8659.85	8650.22	413.11	40°04'57.887"N	104°53'13.620"W	0.52	
16311.00	89.140	359.910	7715.87	8829.66	8820.21	411.92	40°04'59.567"N	104°53'13.635"W	0.83	
16481.00	90.000	359.830	7717.14	8999.49	8990.20	411.54	40°05'01.247"N	104°53'13.640"W	0.51	

Actual Wellpath Report

NRC 26C-4HZ AWP

Page 5 of 6

REFERENCE WELLPATH IDENTIFICATION			
Operator	KERR-MCGEE OIL & GAS ONSHORE LP	Slot	SLOT#56 NRC 26C-4HZ (267'FSL & 637'FEL, SEC.09)
Area	COLORADO	Well	NRC 26C-4HZ
Field	WELD COUNTY (KERR MCGEE)	Wellbore	NRC 26C-4HZ AWB
Facility	SEC.09-T1N-R67W		

WELLPATH DATA (141 stations)										
MD [ft]	Inclination [°]	Azimuth [°]	TVD [ft]	Vert Sect [ft]	North [ft]	East [ft]	Latitude	Longitude	DLS [°/100ft]	Comments
16652.00	89.290	359.050	7718.20	9170.27	9161.19	409.87	40°05'02.937"N	104°53'13.662"W	0.62	
16822.00	90.030	359.790	7719.21	9340.05	9331.17	408.15	40°05'04.617"N	104°53'13.684"W	0.62	
16992.00	90.620	359.860	7718.25	9509.88	9501.17	407.63	40°05'06.296"N	104°53'13.691"W	0.35	
17162.00	90.060	359.510	7717.24	9679.70	9671.16	406.69	40°05'07.976"N	104°53'13.703"W	0.39	
17339.00	90.620	358.320	7716.19	9856.38	9848.12	403.34	40°05'09.725"N	104°53'13.746"W	0.74	LAST BHI MWD+IFR SURVEY
17396.00	90.620	358.320	7715.57	9913.24	9905.10	401.67	40°05'10.288"N	104°53'13.767"W	0.00	PROJECTION TO BIT

HOLE & CASING SECTIONS - Ref Wellbore: NRC 26C-4HZ AWB Ref Wellpath: NRC 26C-4HZ AWP									
String/Diameter	Start MD [ft]	End MD [ft]	Interval [ft]	Start TVD [ft]	End TVD [ft]	Start N/S [ft]	Start E/W [ft]	End N/S [ft]	End E/W [ft]
13.5in Open Hole	16.00	1066.00	1050.00	16.00	1065.97	0.00	0.00	2.57	-0.41
9.625in Casing Surface	16.00	1066.00	1050.00	16.00	1065.97	0.00	0.00	2.57	-0.41
8.75in Open Hole	1066.00	8055.00	6989.00	1065.97	7704.12	2.57	-0.41	567.65	466.50
7in Casing Intermediate	16.00	8044.00	8028.00	16.00	7703.10	0.00	0.00	556.71	467.13
6.125in Open Hole	8044.00	17396.00	9352.00	7703.10	7715.57	556.71	467.13	9905.10	401.67

TARGETS									
Name	MD [ft]	TVD [ft]	North [ft]	East [ft]	Grid East [US ft]	Grid North [US ft]	Latitude	Longitude	Shape
NRC SECTION 4 LINES		-9.00	82.82	-2698.68	3168439.23	1264993.66	40°03'33.221"N	104°53'53.642"W	polygon
NRC SECTION 9 LINES		-9.00	82.82	-2698.68	3168439.23	1264993.66	40°03'33.221"N	104°53'53.642"W	polygon
NRC 26C-4HZ BHL (460'FNL & 175'FEL, SEC.04) REV-2		7702.00	9930.54	424.48	3171494.29	1274862.29	40°05'10.540"N	104°53'13.474"W	point
NRC 26C-4HZ BHL ON PLAT (460'FNL & 100'FEL, SEC.04) REV-1		7702.00	9930.54	499.48	3171569.28	1274862.81	40°05'10.540"N	104°53'12.509"W	point
NRC 26C-4HZ LAND BOX		7710.00	0.00	0.00	3171138.30	1264929.45	40°03'32.404"N	104°53'18.935"W	polygon

WELLPATH COMPOSITION - Ref Wellbore: NRC 26C-4HZ AWB Ref Wellpath: NRC 26C-4HZ AWP									
Start MD [ft]	End MD [ft]	Positional Uncertainty Model		Log Name/Comment			Wellbore		
16.00	987.00	Generic gyro - continuous (Standard)		MS ENERGY GYRODATA SURVEYS <116-987>			NRC 26C-4HZ AWB		
987.00	7998.00	NaviTrak (MAGCORR,IFR)		BHI MWD+IFR SURVEYS 8 3/4" HOLE <1090-7998>			NRC 26C-4HZ AWB		
7998.00	17339.00	NaviTrak (MAGCORR,IFR)		BHI MWD+IFR SURVEYS 6 1/8" HOLE <8100-17339>			NRC 26C-4HZ AWB		
17339.00	17396.00	Blind Drilling (std)		Projection to bit			NRC 26C-4HZ AWB		



Actual Wellpath Report

NRC 26C-4HZ AWP

Page 6 of 6



REFERENCE WELLPATH IDENTIFICATION

Operator	KERR-MCGEE OIL & GAS ONSHORE LP	Slot	SLOT#56 NRC 26C-4HZ (267'FSL & 637'FEL, SEC.09)
Area	COLORADO	Well	NRC 26C-4HZ
Field	WELD COUNTY (KERR MCGEE)	Wellbore	NRC 26C-4HZ AWB
Facility	SEC.09-T1N-R67W		

WELLPATH COMMENTS

MD [ft]	Inclination [°]	Azimuth [°]	TVD [ft]	Comment
16.00	0.000	49.920	16.00	TIE-ON
116.00	0.390	49.920	116.00	BEGIN GYRO SURVEYS
987.00	0.520	37.260	986.97	TIE-INTO GYROS
1090.00	0.580	115.540	1089.96	BEGIN BHI MWD+IFR SURVEYS
8044.00	84.439	356.724	7703.10	7" CASING POINT
17339.00	90.620	358.320	7716.19	LAST BHI MWD+IFR SURVEY
17396.00	90.620	358.320	7715.57	PROJECTION TO BIT