



FILE NO: US625267
 COMPANY: WPX ENERGY INC
 WELL: PUCKETT GM 701-28-HN1
 FIELD: GRAND VALLEY
 COUNTY: GARFIELD STATE CO

Ver. 3.87
 S28 T6S R96W
 PAD: GM 11-28
 RIG: AZTEC 1000
 LOCATION: SHL: 1314' FWL: 1035' FWL
 BHL: 535' FWL: 629' FWL
 SEC 28 TWP 6S RGE 96W
 OTHER SERVICES: NONE

PERMANENT DATUM: GL ELEVATION 5604 FT
 LOG MEASURED FROM: KB 25 FT ABOVE P.D.
 DRILL. MEAS. FROM: KB
 ELEVATIONS: KB 5629 FT, DF, GL 5604 FT

DATE	20-Nov-2013
RUN	TRIP
1	1
SERVICE ORDER	US625267
DEPTH DRILLER	3840 FT
DEPTH LOGGER	NOT TAGGED
BOTTOM LOGGED INTERVAL	2944 FT
TOP LOGGED INTERVAL	50 FT
TIME STARTED	01:50
TIME FINISHED	07:00
OPERATOR RIG TIME	5HRS 10MINS
TYPE OF FLUID IN HOLE	LSND
FLUID DENSITY	10.3 LB/G
FLUID SALINITY	800 PPM
FLUID LEVEL	0 FT
LOGGED CEMENT TOP	NOT FOUND
WELLHEAD PRESSURE	0 PSI
MAXIMUM HOLE DEVIATION	0 DEG
NOMINAL LOGGING SPEED	25 FMIN
MAX. RECORDED TEMP.	NA
REFERENCE LOG	US625265
REFERENCE LOG DATE	13-Nov-2013
EQUIP. NO.	6670
LOCATION	GRAND JUNG
RECORDED BY	PATTON
WITNESSED BY	FRANK

IN MAKING INTERPRETATIONS OF LOGS OUR EMPLOYEES WILL GIVE THE CUSTOMER THE BENEFIT OF THEIR BEST JUDGEMENT. BUT SINCE ALL INTERPRETATIONS ARE OPINIONS BASED ON INFERENCES FROM ELECTRICAL OR OTHER MEASUREMENTS, WE CANNOT, AND WE DO NOT GUARANTEE THE ACCURACY OR CORRECTNESS OF ANY INTERPRETATION. WE SHALL NOT BE LIABLE OR RESPONSIBLE FOR ANY LOSS, COST, DAMAGES, OR EXPENSES WHATSOEVER INCURRED OR SUSTAINED BY THE CUSTOMER RESULTING FROM ANY INTERPRETATION MADE BY ANY OF OUR EMPLOYEES.

BOREHOLE RECORD		
BIT SIZE	FROM	TO
17.5 IN	0 FT	2955 FT

CASING RECORD				
SIZE	WEIGHT	GRADE	FROM	TO
13.375 IN	68 LB/F	P110	217 FT	2957 FT
		N80	0 FT	217 FT

REMARKS

RUN 1 TRIP 1: CASING OD: 13.375"
 CASING WT: 68 LB
 CMP STR: 1000 PSI

THANK YOU FOR CHOOSING BAKER HUGHES WIRELINE SERVICES
 CREW: PATTON/HOLLAR/OLSON
 RIG: AZTEC 1000

EQUIPMENT DATA					
RUN	TRIP	TOOL	SERIES NO.	SERIAL NO.	POSITION

1	1	CCL	2346XA	Z073159	FREE
1	1	GR	1339XA	10197377	FREE
1	1	AC	1633EA	117103	FREE
1	1	CENT	4341XA	10202020	CENTRALIZED
1	1	SBT	1424XA	116974	CENTRALIZED
1	1	VDL	1424PA	153540	CENTRALIZED
1	1	CENT	4341XA	10239054	CENTRALIZED

MAIN LOG 5"/100FT SCALE

ECLIPS 6.2i ECLIPS General Release Rel 6.2i Wed Jun 12 12:21:40 CDT 2013
Patches: 3

Plotted: Wed Nov 20 10:39:44 2013

PARAMETER AND FILTER SUMMARY REPORT

FILE: /dat1a/625267/n331d07.prm
LOGGING MODE: DEPTH DIRECTION: UP
TOP DEPTH: 90.500 ft BOTTOM DEPTH: 2658.500 ft

SYMMETRIC FILTER

MEASUREMENT TYPE	PARAMETER	VALUE	UNITS	INTERVAL (ft)	
GR	FILTER Ø	medium (1)		TOP	BOTTOM
SBT	FILTER, 2pf	medium (1)		"	"
	FILTER, 4pf	medium (1)		"	"
TENSION	FILTER Ø	medium (1)		"	"

SBT PROCESSING

MEASUREMENT TYPE	PARAMETER	VALUE	UNITS	INTERVAL (ft)	
SBT	CASING OD	13.375	in	TOP	BOTTOM
	CASING WT	68.000	lbm/ft	"	"
	FREE PIPE AMP.	47.123	mV	"	"
	FREE PIPE ATTN.	2.662	dB/ft	"	"
	CORR. FACTOR 1 (1424XA 1)	0.604	dB/ft	"	"
	CORR. FACTOR 2 (1424XA 1)	-0.013	dB/ft	"	"
	CORR. FACTOR 3 (1424XA 1)	-0.805	dB/ft	"	"
	CORR. FACTOR 4 (1424XA 1)	0.550	dB/ft	"	"
	CORR. FACTOR 5 (1424XA 1)	0.248	dB/ft	"	"
	CORR. FACTOR 6 (1424XA 1)	-0.585	dB/ft	"	"
	SPACING	0.803	ft	"	"
	SPREADING FACTOR	3.736	dB/ft	"	"
	CEMENT STRENGTH	1000	psi	"	"
	HI CUTOFF (1424XA 1)	7.237	dB/ft	"	"
	LOW CUTOFF (1424XA 1)	3.806	dB/ft	"	"

CURVE DESCRIPTION REPORT

CURVE NAME	CREATION DATE	CURVE DESCRIPTION
F1:ATAV	Nov 20 04:45:44 2013	AVERAGE ATTENUATION
F1:ATC1	Nov 20 04:45:44 2013	ATTENUATION PAD 1
F1:ATC2	Nov 20 04:45:44 2013	ATTENUATION PAD 2
F1:ATC3	Nov 20 04:45:44 2013	ATTENUATION PAD 3
F1:ATC4	Nov 20 04:45:44 2013	ATTENUATION PAD 4
F1:ATC5	Nov 20 04:45:44 2013	ATTENUATION PAD 5
F1:ATC6	Nov 20 04:45:44 2013	ATTENUATION PAD 6
F1:ATMN	Nov 20 04:45:44 2013	ATTENUATION MINIMUM
F1:CCL	Nov 20 04:45:44 2013	CASING COLLAR LOCATOR
F1:CEM0	Nov 20 04:45:44 2013	CALIBRATED AND ORIENTED CEMENT MAP
F1:CYQ	Nov 20 04:45:44 2013	CYCLE QUALITY
F1:DTMN	Nov 20 04:45:44 2013	MINIMAL SLOWNESS
F1:DTMX	Nov 20 04:45:44 2013	MAXIMAL SLOWNESS
F1:CP	Nov 20 04:45:44 2013	GAMMA RAY

F1:RBSB Nov 20 04:45:44 2013
 F1:TEN Nov 20 04:45:44 2013
 F1:WAVE Nov 20 04:45:44 2013

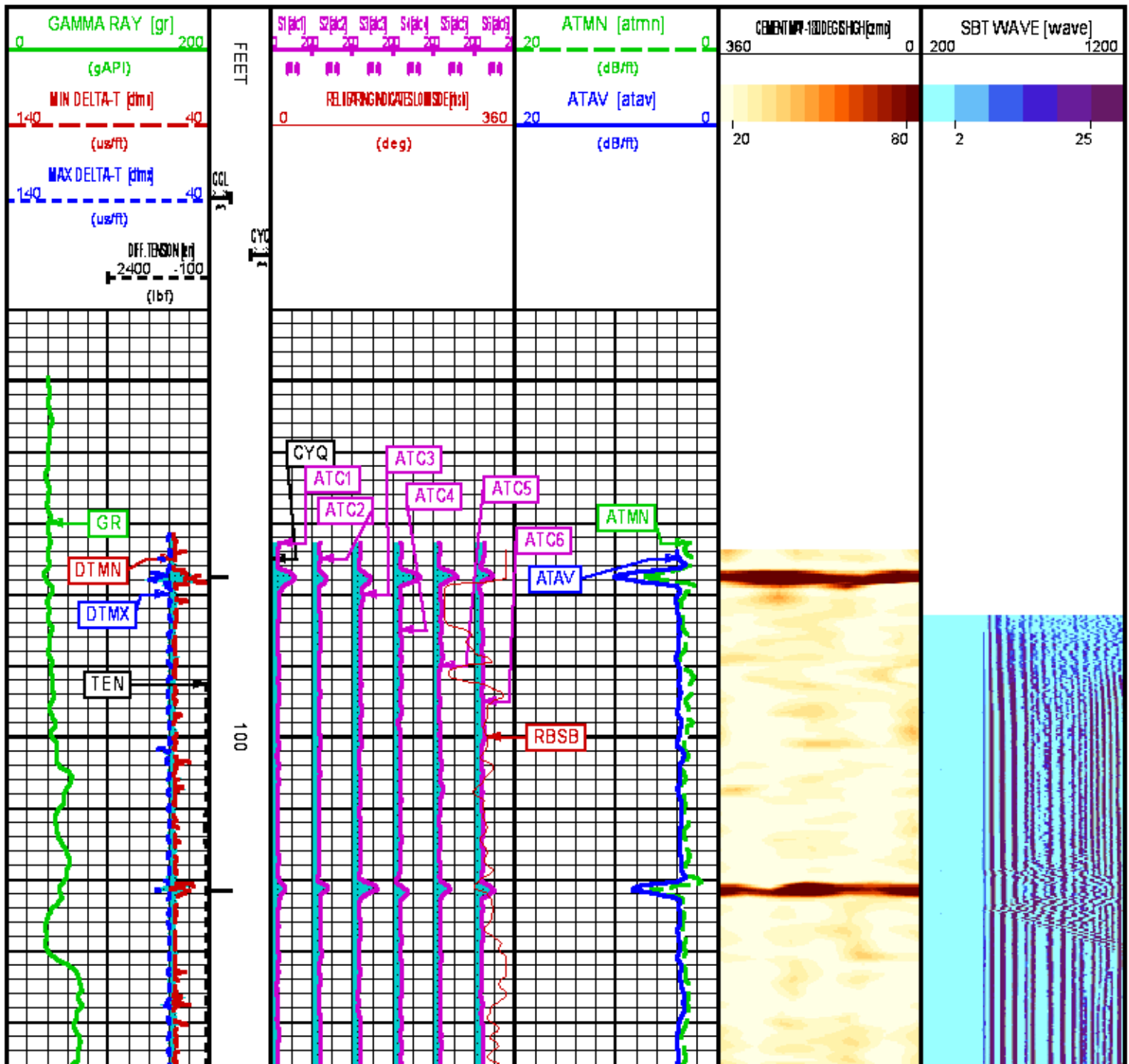
GAMMA RAY RELATIVE BEARING (RELATIVE TO BOREHOLE LOW SIDE) FOR SBT
 DIFFERENTIAL TENSION
 DIGITIZED WAVEFORM

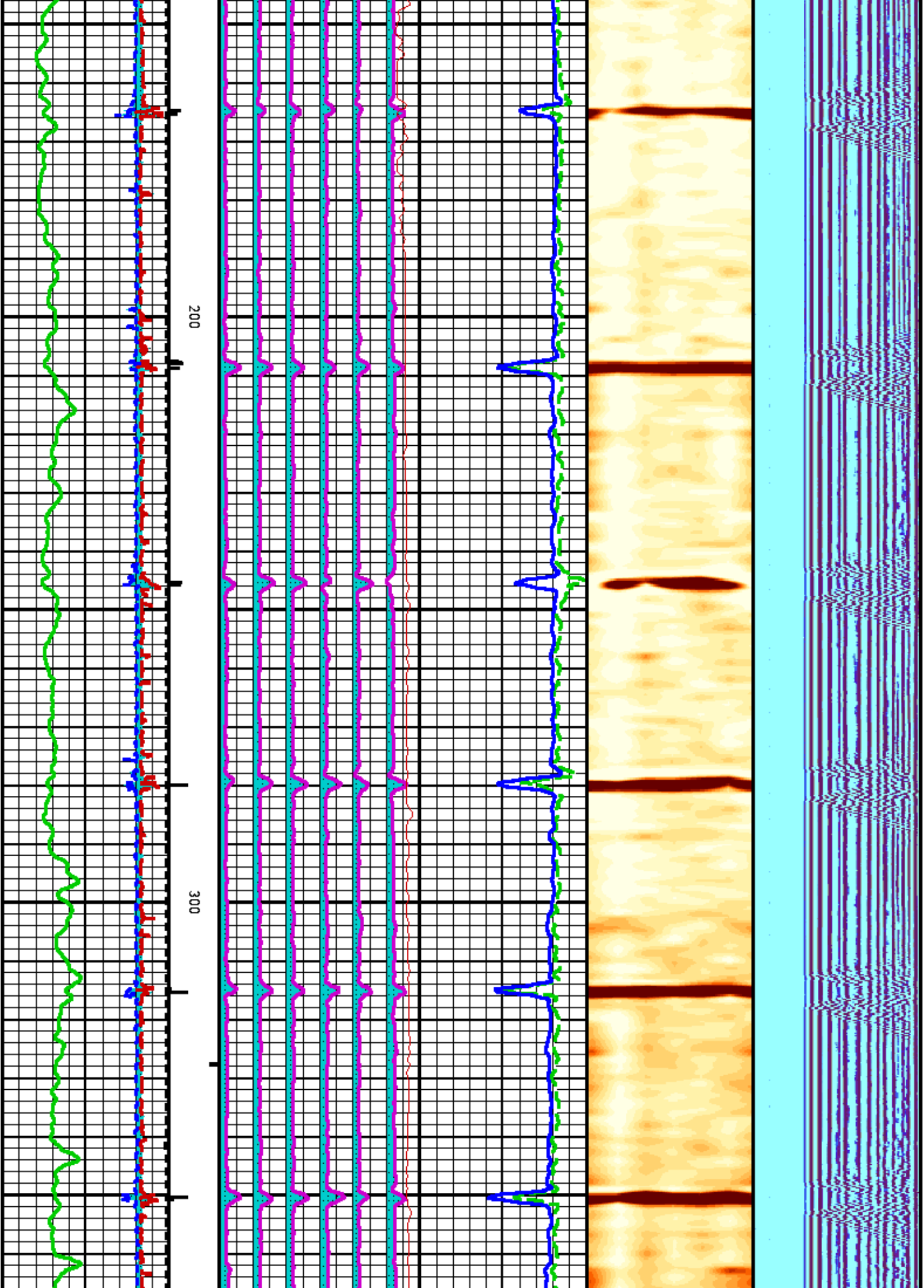
CURVE MEASURE POINT OFFSET

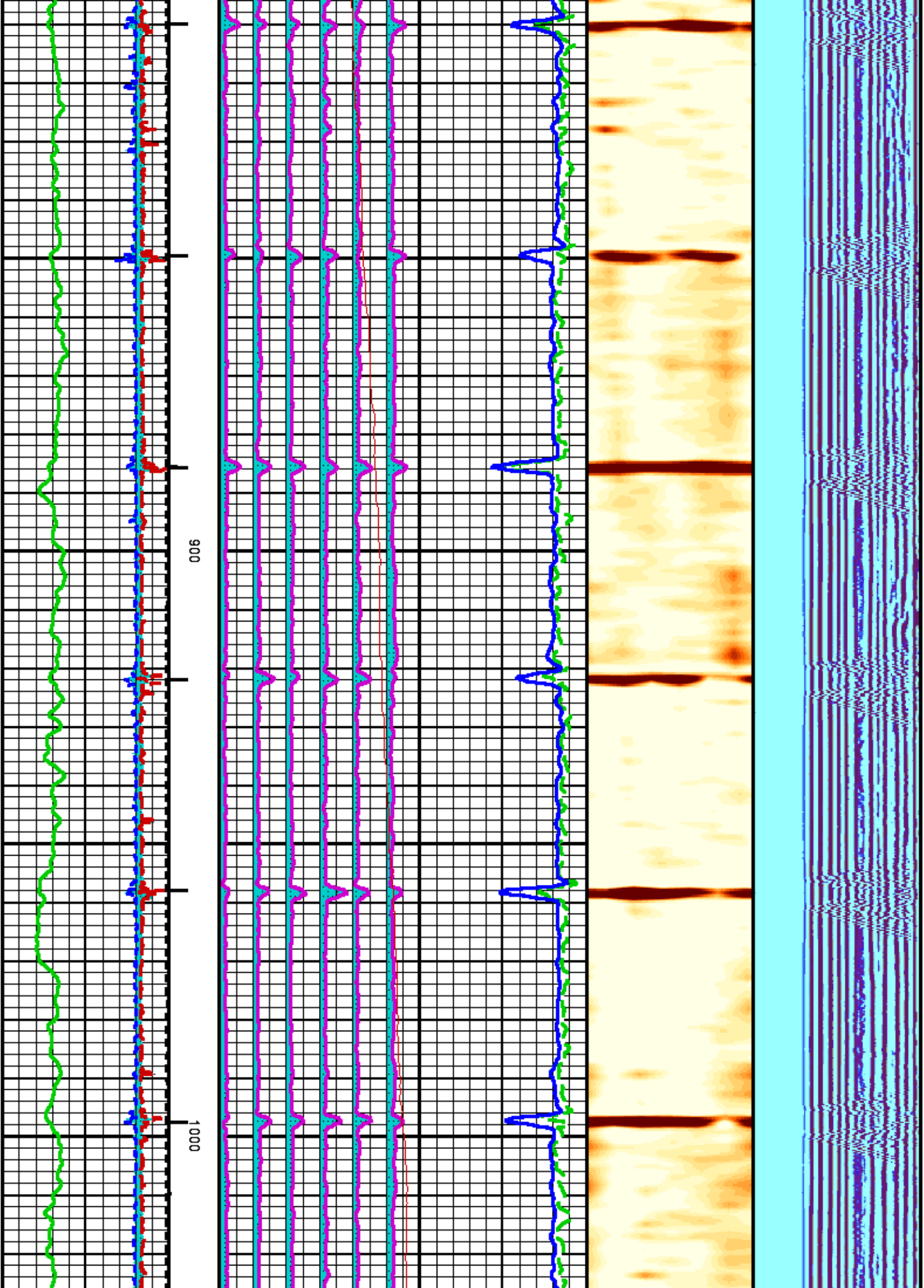
CURVE	OFFSET (ft)	CURVE	OFFSET (ft)	CURVE	OFFSET (ft)	CURVE	OFFSET (ft)
ATAV	19.75	ATC4	19.75	CCL	51.00	GR	43.00
ATC1	19.75	ATC5	19.75	CYQ	19.75	RBSB	19.75
ATC2	19.75	ATC6	19.75	DTMN	19.75	TEN	0.00
ATC3	19.75	ATMN	19.75	DTMX	19.75		

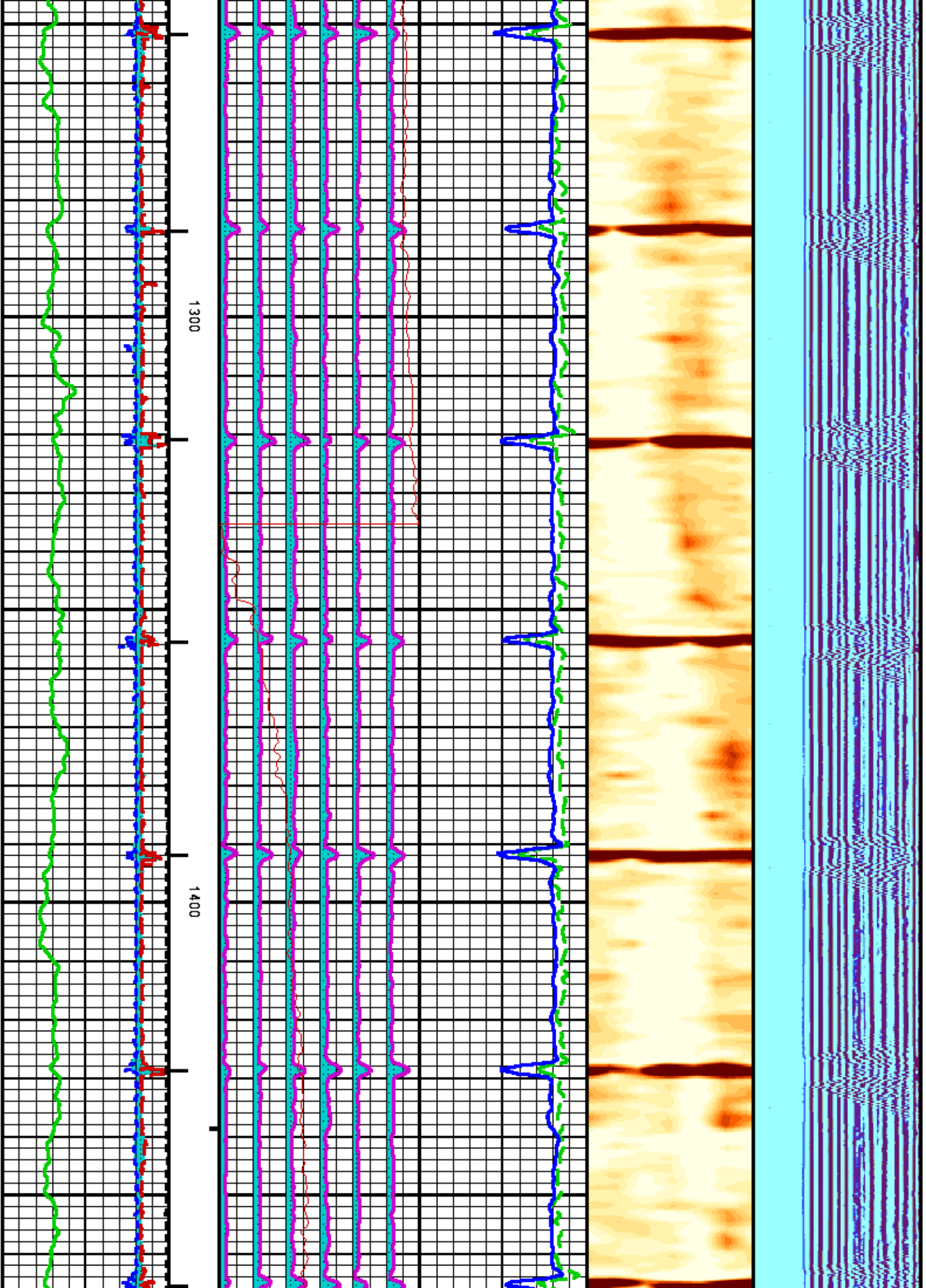
Presentation : HL6670:/dat1a/625267/sbtmon-rb-MAIN.fvpdf [5"/100' Scale]
Plot Interval : 40.25 - 2951 Feet

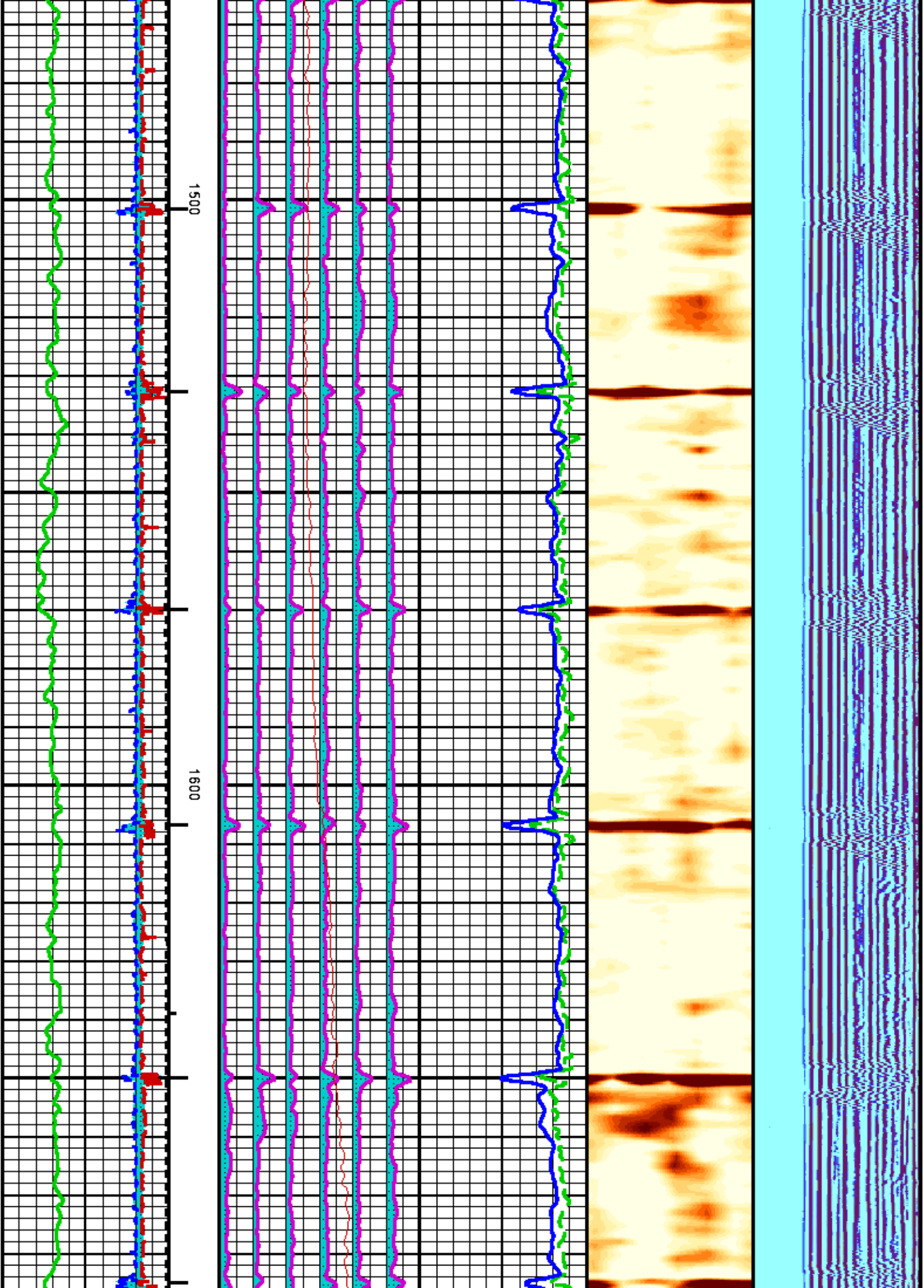
Data File 1 : F1 : HL6670:/dat1a/625267/n331d07-MAIN2.xtf
Created On : Nov 20 07:06:58 2013
Company : WPX ENERGY INC
Well : PUCKETT GM 701-28-HN1
Field : RULISON
File Interval : 40.25 - 2951 Feet
OCT : n331d

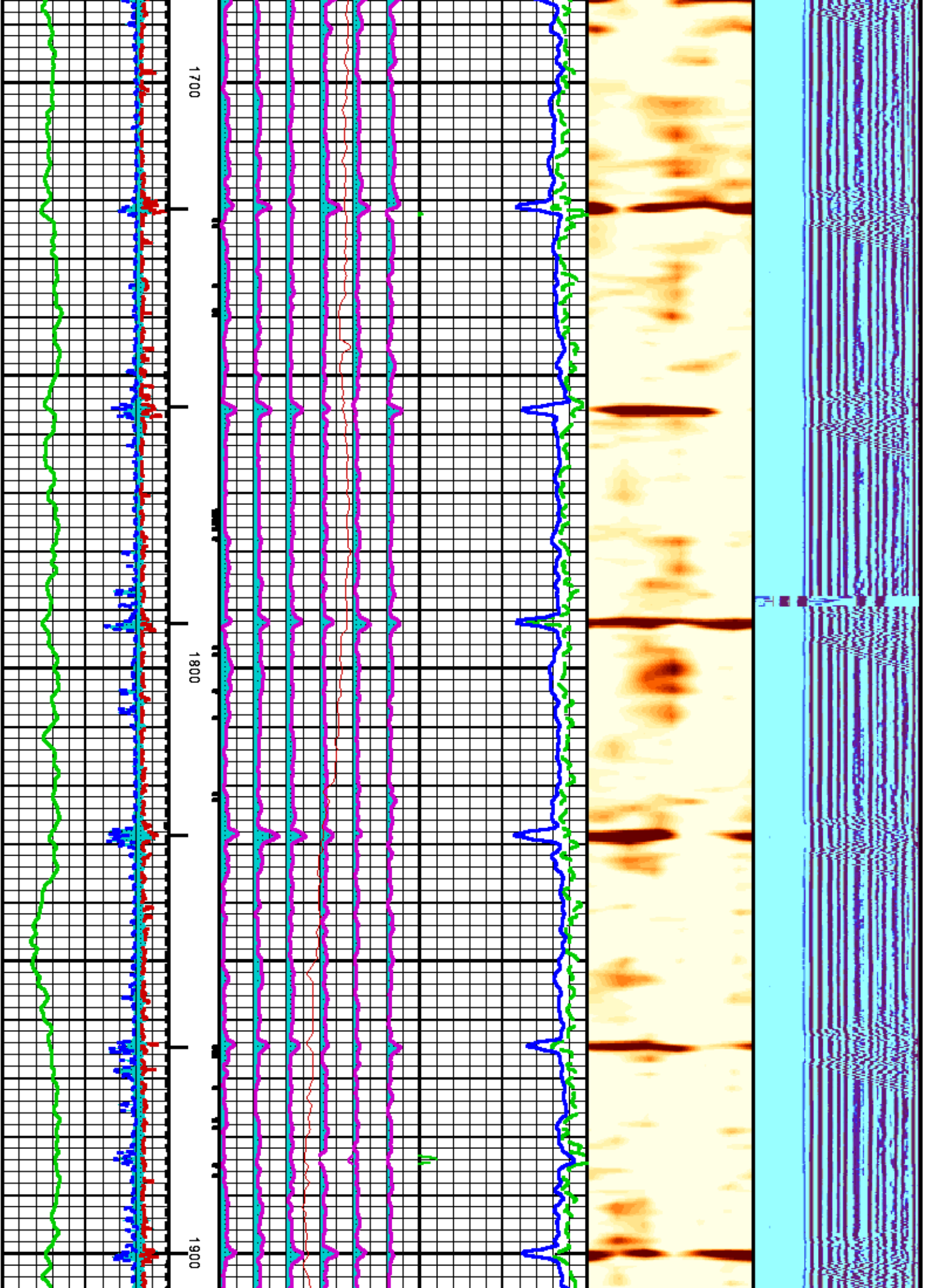


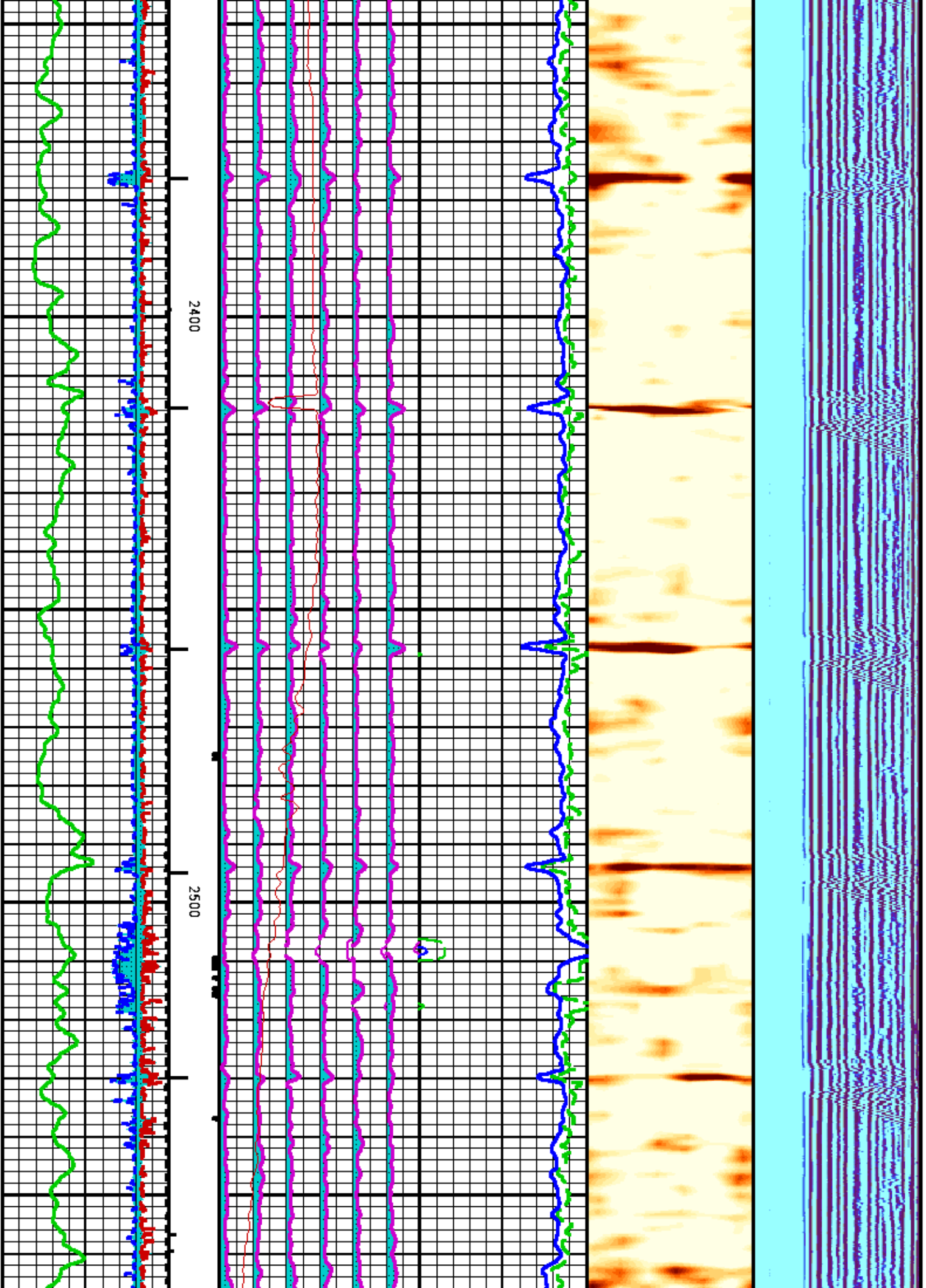


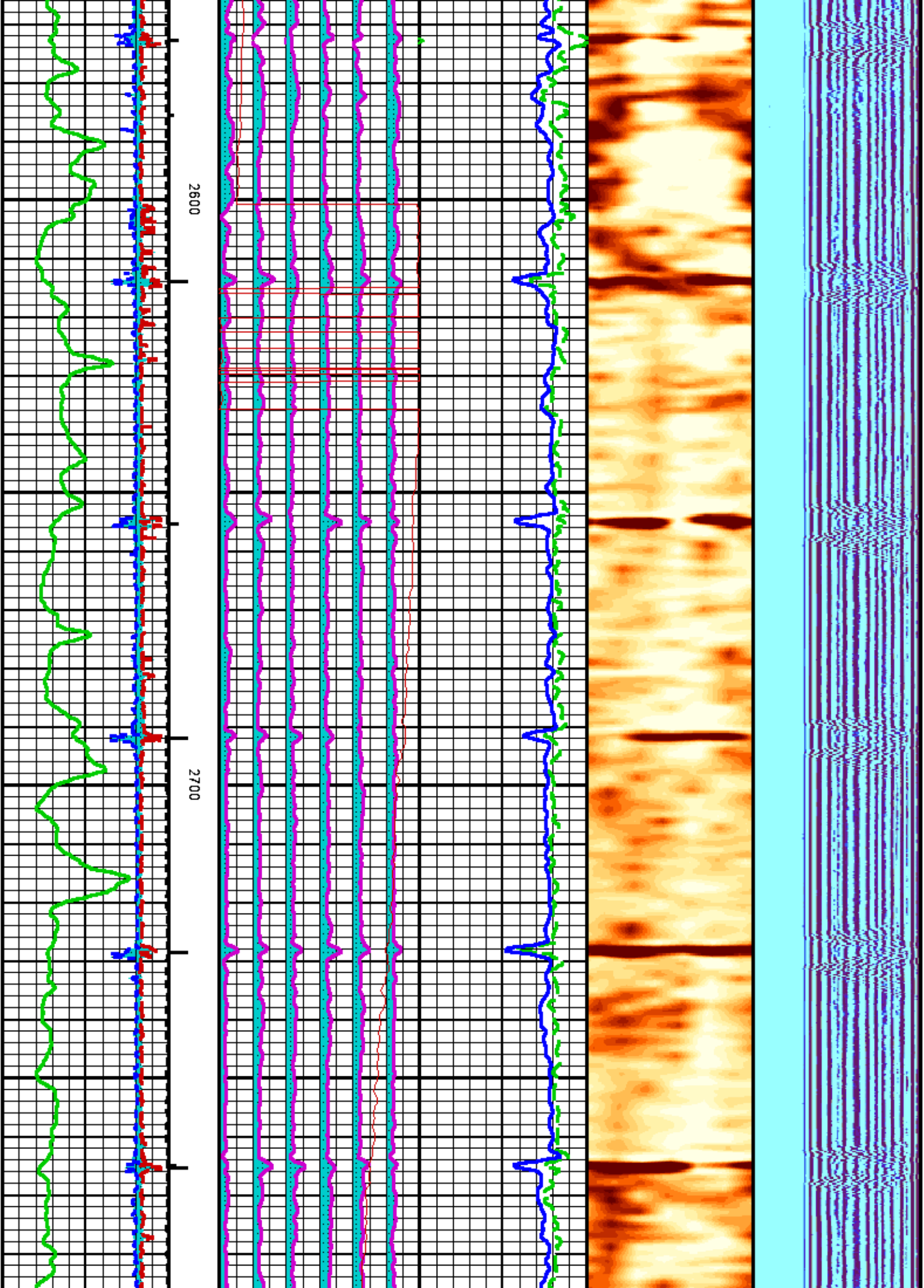


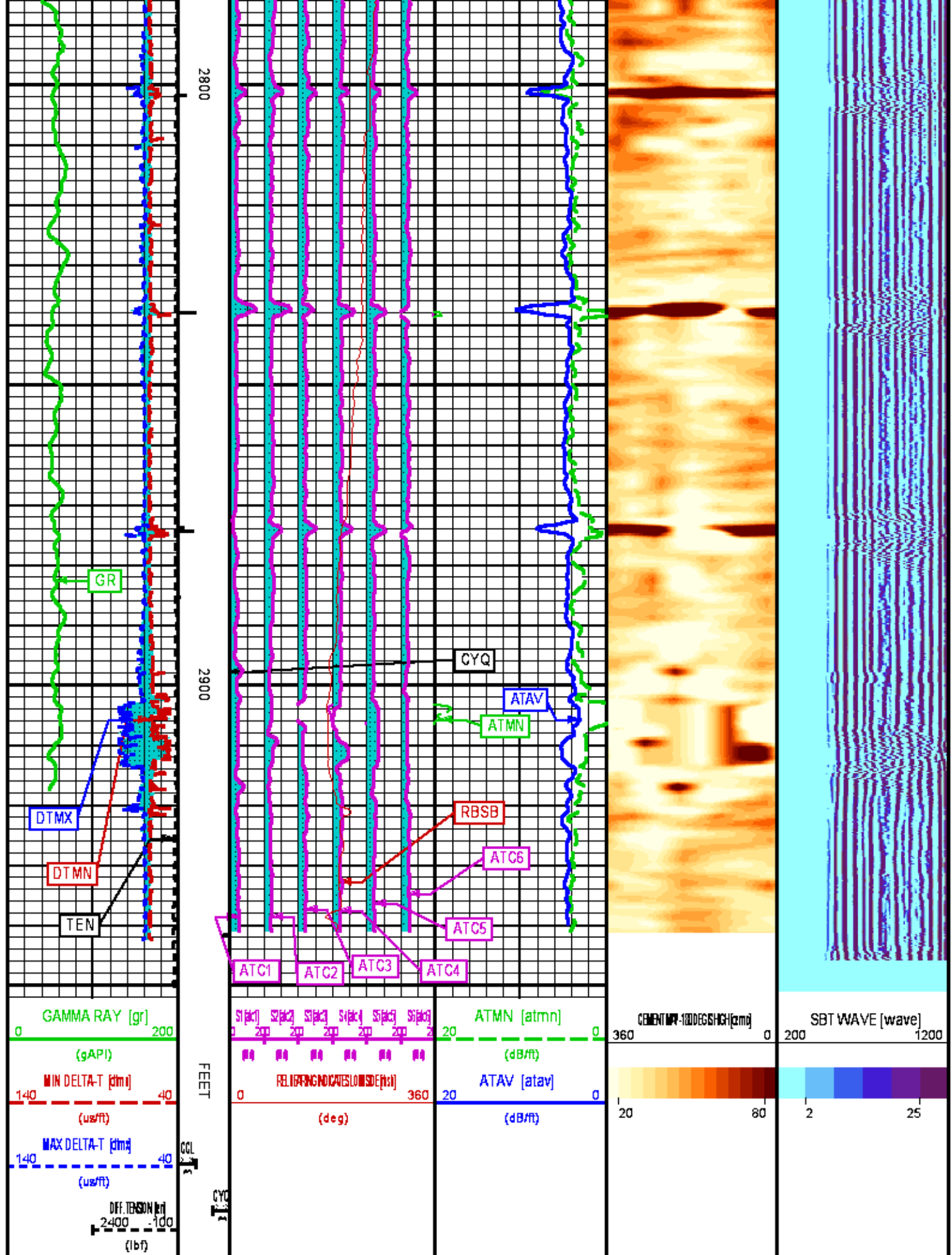












REPEAT LOG 5"/100FT SCALE

ECLIPS 6.2i ECLIPS General Release Rel 6.2i Wed Jun 12 12:21:40 CDT 2013

Patches: 3

Plotted: Wed Nov 20 10:44:04 2013

PARAMETER AND FILTER SUMMARY REPORT

FILE: /dat1a/625267/n331d05.prm
 LOGGING MODE: DEPTH DIRECTION: UP
 TOP DEPTH: 2702.500 ft BOTTOM DEPTH: 2962.500 ft

SYMMETRIC FILTER

MEASUREMENT TYPE	PARAMETER	VALUE	UNITS	INTERVAL (ft)	
GR	FILTER Q	medium (1)		TOP	BOTTOM
SBT	FILTER, 2pf	medium (1)		"	"
	FILTER, 4pf	medium (1)		"	"
TENSION	FILTER Q	medium (1)		"	"

SBT PROCESSING

MEASUREMENT TYPE	PARAMETER	VALUE	UNITS	INTERVAL (ft)	
SBT	CASING OD	13.375	in	TOP	BOTTOM
	CASING WT	68.000	lbm/ft	"	"
	FREE PIPE AMP.	47.123	mV	"	"
	FREE PIPE ATTN.	2.662	dB/ft	"	"
	CORR. FACTOR 1 (1424XA 1)	0.604	dB/ft	"	"
	CORR. FACTOR 2 (1424XA 1)	-0.013	dB/ft	"	"
	CORR. FACTOR 3 (1424XA 1)	-0.805	dB/ft	"	"
	CORR. FACTOR 4 (1424XA 1)	0.550	dB/ft	"	"
	CORR. FACTOR 5 (1424XA 1)	0.248	dB/ft	"	"
	CORR. FACTOR 6 (1424XA 1)	-0.585	dB/ft	"	"
	SPACING	0.803	ft	"	"
	SPREADING FACTOR	3.736	dB/ft	"	"
	CEMENT STRENGTH	1000	psi	"	"
	HI CUTOFF (1424XA 1)	7.237	dB/ft	"	"
	LOW CUTOFF (1424XA 1)	3.806	dB/ft	"	"

CURVE DESCRIPTION REPORT

CURVE NAME	CREATION DATE	CURVE DESCRIPTION
F1:ATAV	Nov 20 04:11:19 2013	AVERAGE ATTENUATION
F1:ATC1	Nov 20 04:11:19 2013	ATTENUATION PAD 1
F1:ATC2	Nov 20 04:11:19 2013	ATTENUATION PAD 2
F1:ATC3	Nov 20 04:11:19 2013	ATTENUATION PAD 3
F1:ATC4	Nov 20 04:11:19 2013	ATTENUATION PAD 4
F1:ATC5	Nov 20 04:11:19 2013	ATTENUATION PAD 5
F1:ATC6	Nov 20 04:11:19 2013	ATTENUATION PAD 6
F1:ATMN	Nov 20 04:11:19 2013	ATTENUATION MINIMUM
F1:CCL	Nov 20 04:11:19 2013	CASING COLLAR LOCATOR
F1:CEMO	Nov 20 04:11:19 2013	CALIBRATED AND ORIENTED CEMENT MAP
F1:CYQ	Nov 20 04:11:19 2013	CYCLE QUALITY
F1:DTMN	Nov 20 04:11:19 2013	MINIMAL SLOWNESS
F1:DTMX	Nov 20 04:11:19 2013	MAXIMAL SLOWNESS
F1:GR	Nov 20 04:11:19 2013	GAMMA RAY
F1:RBSB	Nov 20 04:11:19 2013	RELATIVE BEARING (RELATIVE TO BOREHOLE LOW SIDE) FOR SBT
F1:TEN	Nov 20 04:11:19 2013	DIFFERENTIAL TENSION
F1:WAVE	Nov 20 04:11:19 2013	DIGITIZED WAVEFORM

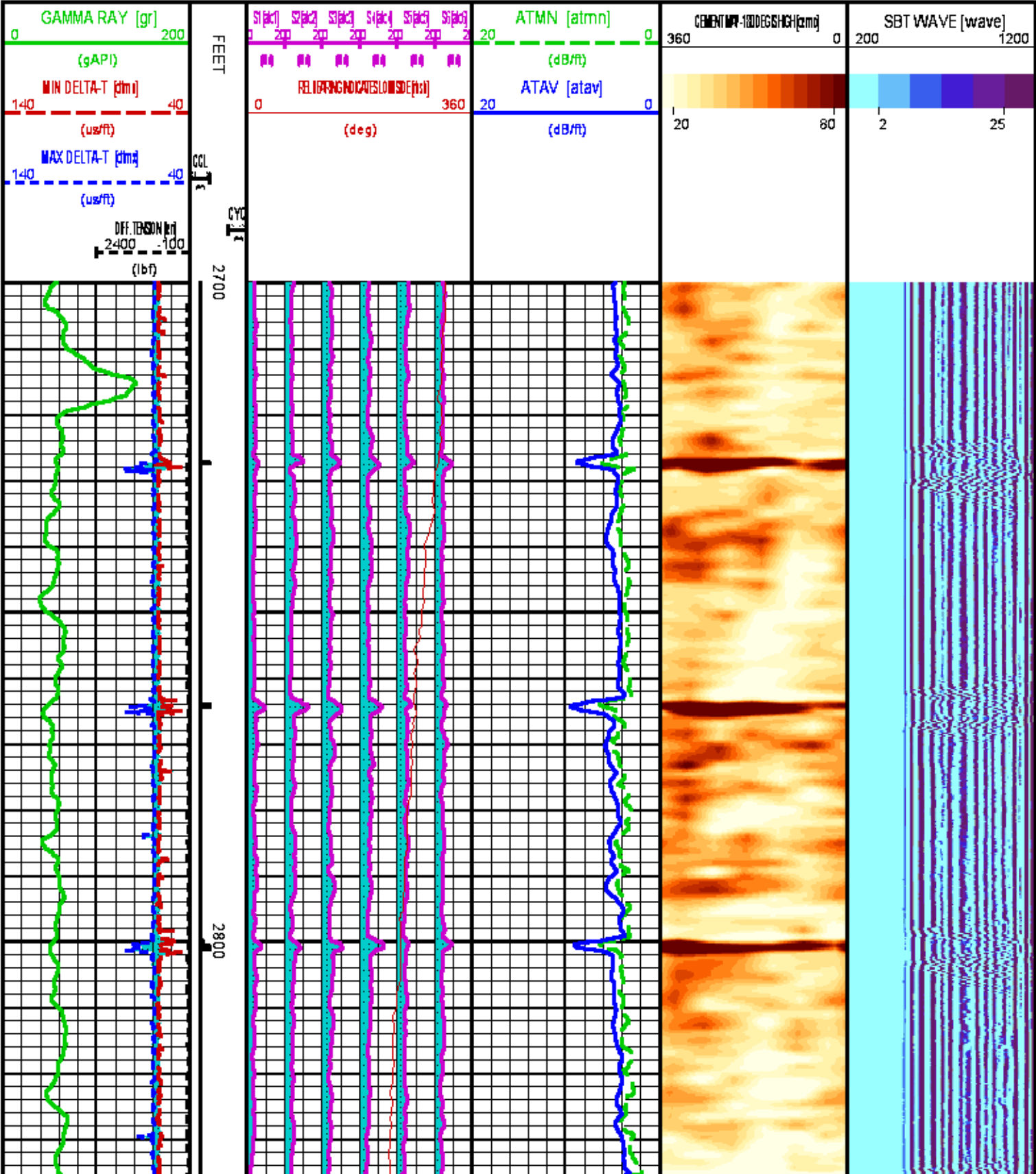
CURVE MEASURE POINT OFFSET

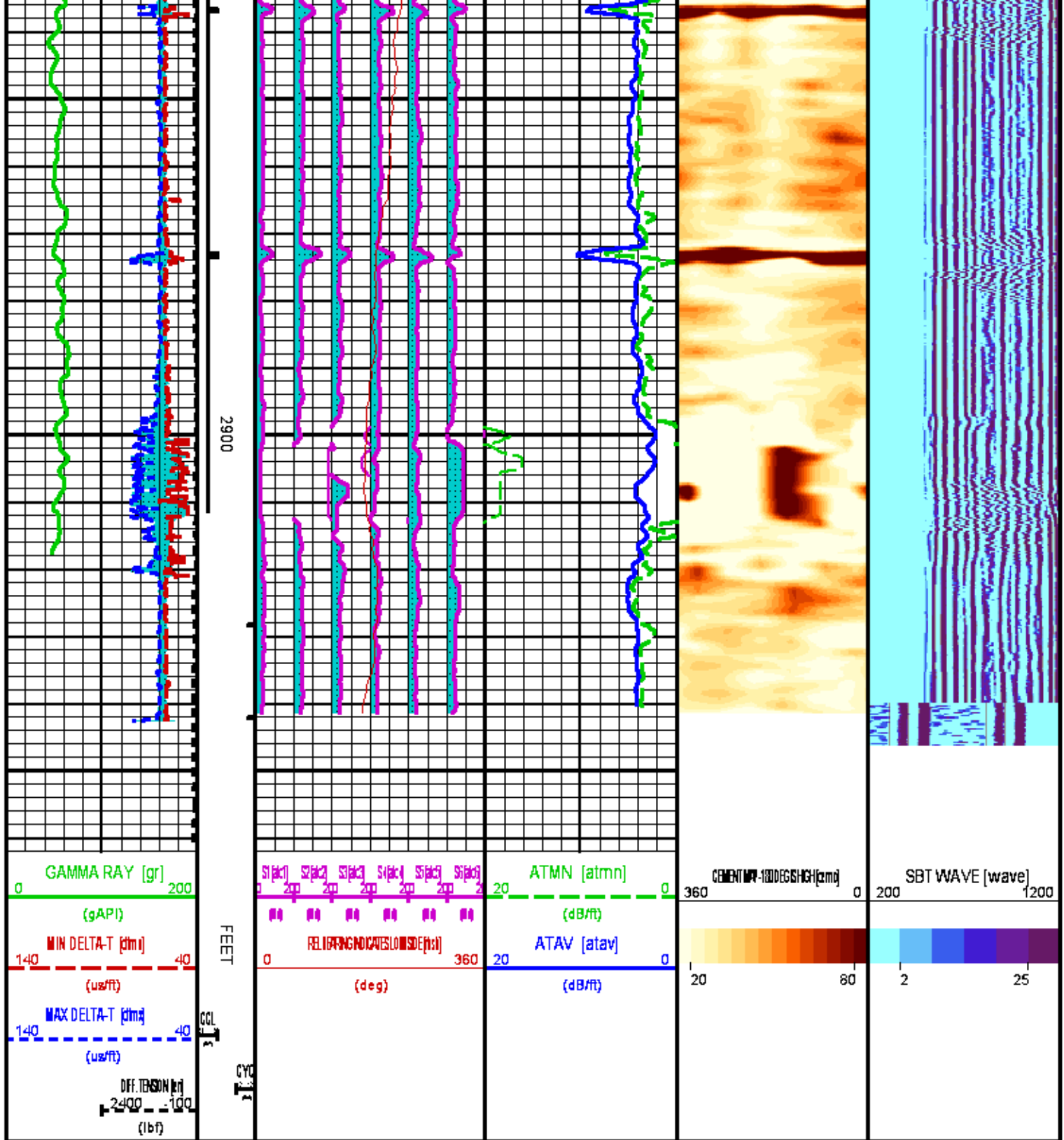
CURVE	OFFSET (ft)	CURVE	OFFSET (ft)	CURVE	OFFSET (ft)	CURVE	OFFSET (ft)
ATAV	19.75	ATC4	19.75	CCL	51.00	GR	43.00
ATC1	10.75	ATC5	10.75	CYC	10.75	RBSB	10.75

ATC1	19.75	ATC5	19.75	CFQ	19.75	R33B	19.75
ATC2	19.75	ATC6	19.75	DTMN	19.75	TEN	0.00
ATC3	19.75	ATMN	19.75	DTMX	19.75		

Presentation : HL6670:/dat 1a/625267/sbtmon-rb-REPEAT.fvpdf [5"/100' Scale]
Plot Interval : 2700 - 2961.25 Feet

Data File 1 : F1 : HL6670:/dat 1a/625267/n331d05-REPEAT.xtf
Created On : Nov 20 04:11:19 2013
Company : WPX ENERGY INC
Well : PUCKETT GM 701-28-HN1
Field : RULISON
File Interval : 2651.25 - 2962.5 Feet
OCT : n331d





NORMALIZATION PASS

PARAMETER AND FILTER SUMMARY REPORT

FILE: /dat1a/625267/n331d03.prm
 LOGGING MODE: DEPTH DIRECTION: DOWN
 TOP DEPTH: 198.147 ft BOTTOM DEPTH: 650.750 ft

SYMMETRIC FILTER

MEASUREMENT TYPE	PARAMETER	VALUE	UNITS	INTERVAL (ft)	
GR	FILTER Q	medium (1)		TOP	BOTTOM
SBT	FILTER, 2pf	medium (1)		"	"
	FILTER, 4pf	medium (1)		"	"
TENSION	FILTER Q	medium (1)		"	"

SBT PROCESSING

MEASUREMENT TYPE	PARAMETER	VALUE	UNITS	INTERVAL (ft)	
SBT	CASING OD	13.375	in	TOP	BOTTOM
	CASING WT	68.000	lbm/ft	"	"
	FREE PIPE AMP.	47.123	mV	"	"
	FREE PIPE ATTN.	2.662	dB/ft	"	"
	CORR. FACTOR 1 (1424XA 1)	-3.766	dB/ft	"	"
	CORR. FACTOR 2 (1424XA 1)	1.536	dB/ft	"	"
	CORR. FACTOR 3 (1424XA 1)	-0.354	dB/ft	"	"
	CORR. FACTOR 4 (1424XA 1)	-0.630	dB/ft	"	"
	CORR. FACTOR 5 (1424XA 1)	1.630	dB/ft	"	"
	CORR. FACTOR 6 (1424XA 1)	1.583	dB/ft	"	"
	SPACING	0.803	ft	"	"
	SPREADING FACTOR	3.736	dB/ft	"	"
	CEMENT STRENGTH	1000	psi	"	"
	HI CUTOFF (1424XA 1)	7.237	dB/ft	"	"
	LOW CUTOFF (1424XA 1)	3.806	dB/ft	"	"

CURVE DESCRIPTION REPORT

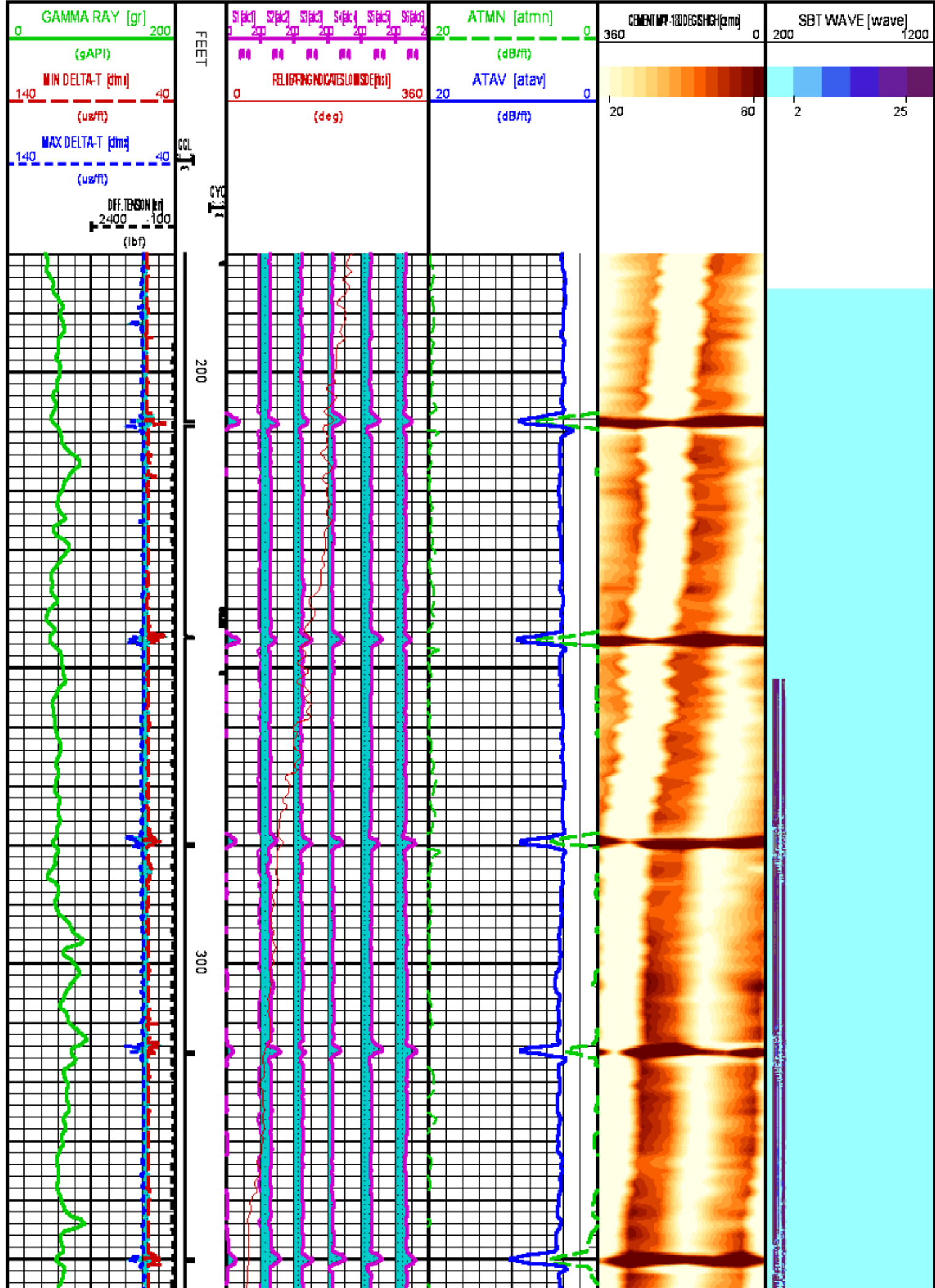
CURVE NAME	CREATION DATE	CURVE DESCRIPTION
F1:ATAV	Nov 20 03:23:22 2013	AVERAGE ATTENUATION
F1:ATC1	Nov 20 03:23:22 2013	ATTENUATION PAD 1
F1:ATC2	Nov 20 03:23:22 2013	ATTENUATION PAD 2
F1:ATC3	Nov 20 03:23:22 2013	ATTENUATION PAD 3
F1:ATC4	Nov 20 03:23:22 2013	ATTENUATION PAD 4
F1:ATC5	Nov 20 03:23:22 2013	ATTENUATION PAD 5
F1:ATC6	Nov 20 03:23:22 2013	ATTENUATION PAD 6
F1:ATMN	Nov 20 03:23:22 2013	ATTENUATION MINIMUM
F1:CCL	Nov 20 03:23:22 2013	CASING COLLAR LOCATOR
F1:CEMO	Nov 20 03:23:22 2013	CALIBRATED AND ORIENTED CEMENT MAP
F1:CYQ	Nov 20 03:23:22 2013	CYCLE QUALITY
F1:DTMN	Nov 20 03:23:22 2013	MINIMAL SLOWNESS
F1:DTMX	Nov 20 03:23:22 2013	MAXIMAL SLOWNESS
F1:GR	Nov 20 03:23:22 2013	GAMMA RAY
F1:RBSB	Nov 20 03:23:22 2013	RELATIVE BEARING (RELATIVE TO BOREHOLE LOW SIDE) FOR SBT
F1:TEN	Nov 20 03:23:22 2013	DIFFERENTIAL TENSION
F1:WAVE	Nov 20 03:23:22 2013	DIGITIZED WAVEFORM

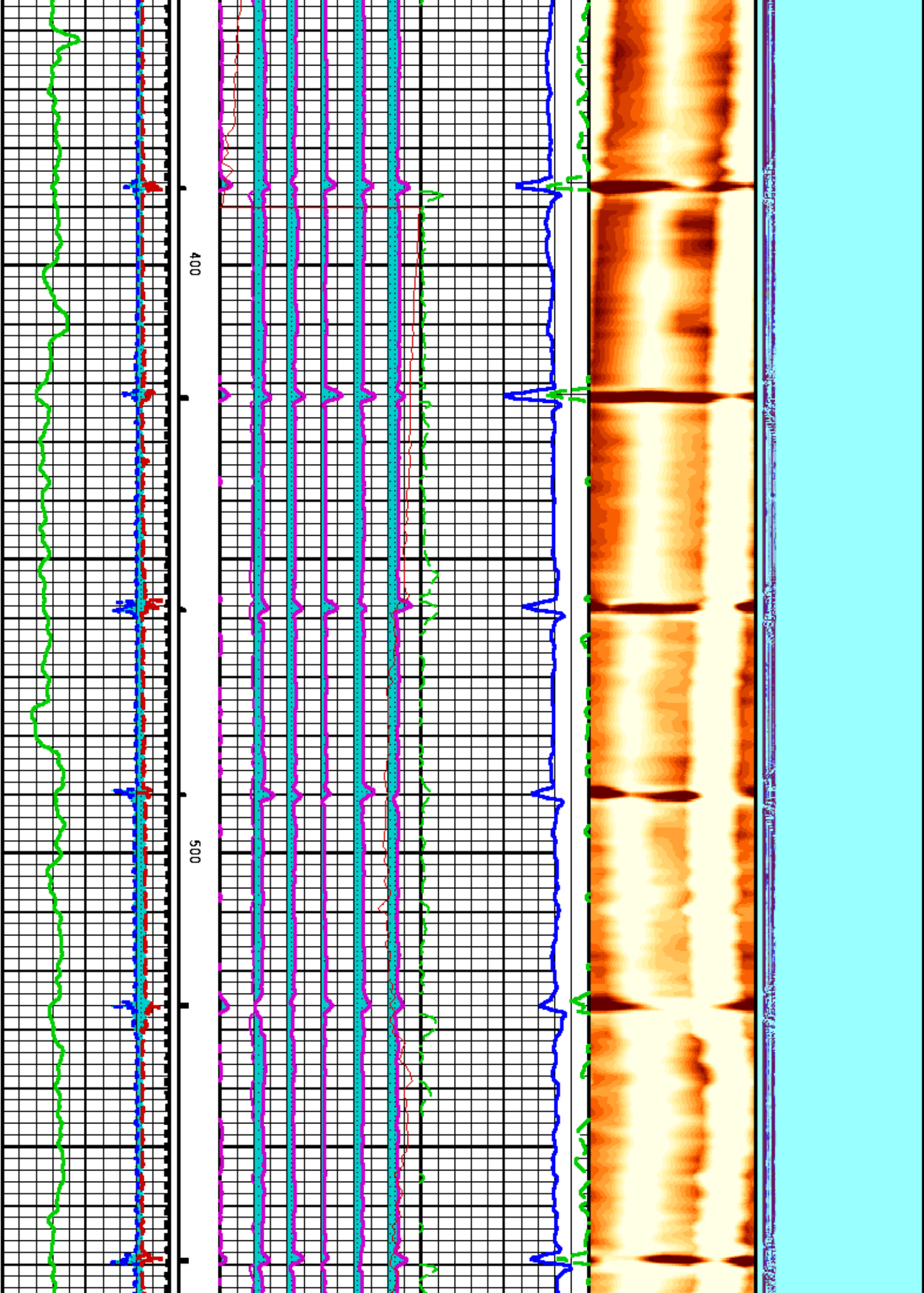
CURVE MEASURE POINT OFFSET

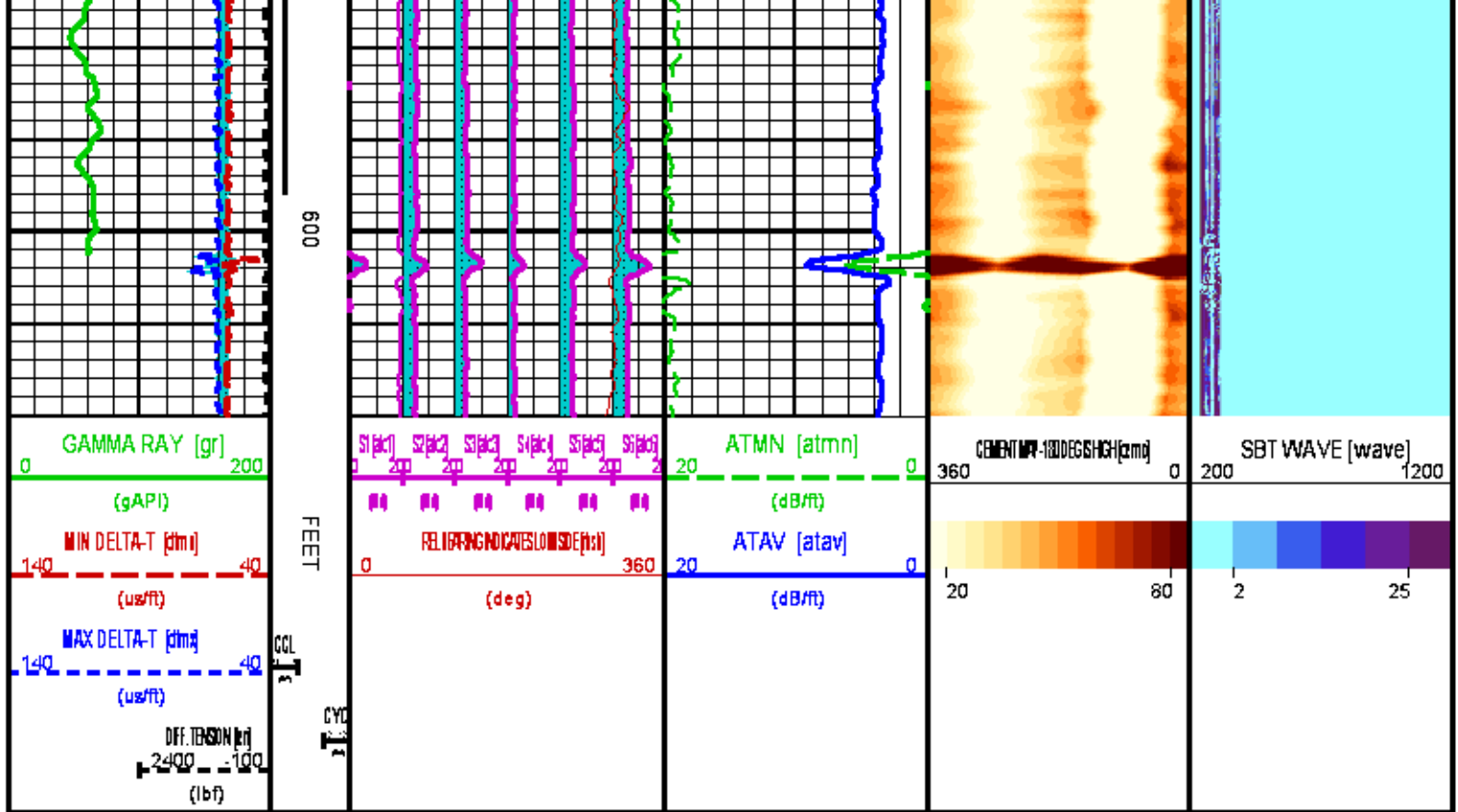
CURVE	OFFSET (ft)	CURVE	OFFSET (ft)	CURVE	OFFSET (ft)	CURVE	OFFSET (ft)
ATAV	19.75	ATC4	19.75	CCL	51.00	GR	43.00
ATC1	19.75	ATC5	19.75	CYQ	19.75	RBSB	19.75
ATC2	19.75	ATC6	19.75	DTMN	19.75	TEN	0.00
ATC3	19.75	ATMN	19.75	DTMX	19.75		

Presentation : HL6670:/dat1a/625267/sbtmon-rb-NORMALIZATION.fvpdf [5"/100' Scale]
Plot Interval : 180 - 620 Feet

Data File 1 : F1 : HL6670:/dat1a/625267/n331d03-NORMALIZATION.xdf
Created On : Nov 20 09:19:37 2013
Company : WPX ENERGY INC
Well : PUCKETT GM 701-28-HN1
Field : RULISON
File Interval : 143.25 - 646.75 Feet
OCT : n331d







CALIBRATION / VERIFICATION SUMMARY

Source File: /data/a/625267/n331d.tp1

GR PRIMARY CALIBRATION SUMMARY

TOOL #:	1339XA 10197377	DATE/TIME PERFORMED:	Wed Nov 20 00:02:45 2013				
UNIT #:	388DTA HL667D	CALB JIG #:	4702NK VBA-905				
	BACKGROUND (cts/s)	CALBRTR ON (cts/s)	CR DIFF (cts/s)	MULT	BACKGROUND (gAPI)	CALBRTR ON (gAPI)	CALBRTR (gAPI)
GR	39.18	207.53	168.4 155.0 195.0	0.891	34.91	184.91	150

RB PRIMARY CALIBRATION SUMMARY

TOOL #:	1424XA 116974	DATE/TIME PERFORMED:	Thu Nov 14 16:19:57 2013			
UNIT #:	388DTA HL667D					
	X-ATT (raw)	Y-ATT (raw)	OFFSET (deg)	X-MAX	Y-MAX	RB (deg)
PAD 2	-98.4	-459.6				0.00 355.00 5.00
PAD 3	-415.0	-129.6				61.12 55.00 65.00
				-77.18	-434.38	471.35

SBT PRIMARY CALIBRATION SUMMARY

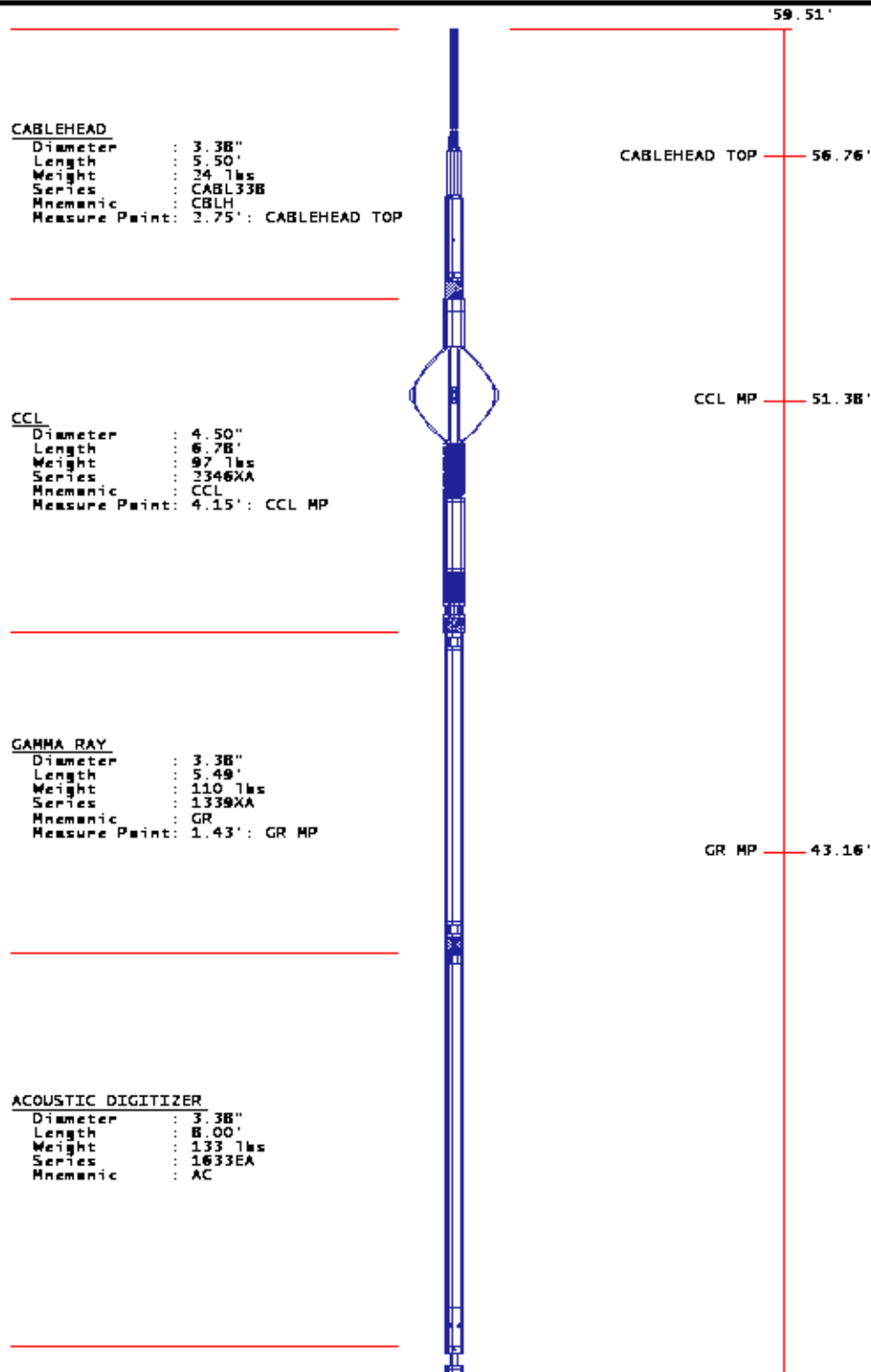
--	--	--	--

UNIT #: 388QTA HL667D

	PAD 1	PAD 2	PAD 3	PAD 4	PAD 5	PAD 6
NOISE LEVEL	2.5 10.0	1.3 10.0	2.4 10.0	1.8 10.0	2.1 10.0	3.2 10.0
PAD SENS	224.6 190.0	235.8 190.0	260.0 190.0	195.0 190.0	229.0 190.0	171.2 190.0

INSTRUMENT CONFIGURATION

Source File: /dat1a/625267/n331d~SBT-tdg



4 ARM BOW SPRING CENTRALIZER

Diameter : 3.38"
Length : 4.12'
Weight : 72 lbs
Series : 4341XA
Mnemonic : CENT

SEGMENTED BOND TOOL

Diameter : 3.38"
Length : 17.33'
Weight : 340 lbs
Series : 1424XA
Mnemonic : SBT
Measure Point: 7.54': ATT MP

SEGMENTED BOND TOOL VDL SUB

Diameter : 3.38"
Length : 7.89'
Weight : 108 lbs
Series : 1424PA
Mnemonic : SBT
Measure Point: 4.00': SBT MP

4 ARM BOW SPRING CENTRALIZER

Diameter : 3.38"
Length : 4.12'
Weight : 72 lbs
Series : 4341XA
Mnemonic : CENT

BULL PLUG 3 3/8

TOTAL LENGTH: 59.51'
TOTAL WEIGHT: 858 lbs
MAX DIAMETER: 0'4.50'



ATT MP — 19.83'

SBT MP — 8.40'

0.00'



COMPANY WPX ENERGY INC
WELL PUCKETT GM 701-28-HN1
FIELD GRAND VALLEY
COUNTY GARFIELD STATE CO

FILE NO: US625267
API NO: 05045221540000

LOCATION:
 SHL: 1314' FNL; 1035' FWL
 BHL: 535' FNL; 629' FWL
SEC 28 **TWP** 6S **RGE** 96W

ELEVATIONS:
KB 5629 FT
DF
GL 5604 FT

S28 T6S R96W
PAD: GM 11-28
RIG: AZTEC 1000

DATE 20-Nov-2013

