

HALLIBURTON

iCem[®] Service

CONOCO/PHILLIPS COMPANY EBUSINESS

For: MIKE JOHNSON

Date: Saturday, April 12, 2014

SUNSET 4-65 21-22 1H

SUNSET 4-65 21-22

Case 1

Sincerely,

AARON SMITH

J 200

The Road to Excellence Starts with Safety

Sold To #: 352431	Ship To #: 3282619	Quote #: 0021839124	Sales Order #: 0901251821
Customer: CONOCO/PHILLIPS COMPANY EBUSINESS		Customer Rep: CLINT GOIN	
Well Name: SUNSET 4-65 21-22	Well #: 1 H	API/UWI #: 05-005-07218-01	
Field: WILDCAT	City (SAP): AUR	County/Parish: ARAPAHOE	State: COLORADO
Legal Description: SE SE-22-4S-65W-1000FSL-350FEL			
Contractor: H & P DRLG		Rig/Platform Name/Num: H & P 276	
Job BOM: 7522			
Well Type: HORIZONTAL OIL		Srvc Supervisor: Aaron Smith	
Sales Person: HALAMERICA\HX38199		Job	

Formation Name		Bottom	ft
Formation Depth (MD)	Top ft	BHST	220 degF
Form Type		Job Depth TVD	
Job depth MD	8263ft	Wk Ht Above Floor	
Water Depth		To	
Perforation Depth (MD)	From		

Well Data

Description	New / Used	Size in	ID in	Weight lbm/ft	Thread	Grade	Top MD ft	Bottom MD ft	Top TVD ft	Bottom TVD ft
Casing		9.625	8.921	36		J-55	0	2270		2270
Casing		7	6.094	32	BTC	P-110	0	8263	0	8263
Open Hole Section			8.75				2270	8263	2270	8263

Tools and Accessories

Type	Size in	Qty	Make	Depth ft	Type	Size in	Qty	Make
Guide Shoe	7	1			Top Plug	7	1	WFD
Float Shoe	7	1		8263	Bottom Plug	7	1	WFD
Float Collar	7	1		8162	SSR plug set	7	1	HES
Insert Float	7	1			Plug Container	7	1	HES
Stage Tool	7	1			Centralizers	7	1	HES

Miscellaneous Materials

Gelling Agt	Conc	Surfactant	Conc	Acid Type	Qty	Conc
Treatment Fid	Conc	Inhibitor	Conc	Sand Type	Size	Qty

Fluid Data

Stage/Plug #: 1

Fluid #	Stage Type	Fluid Name	Qty	Qty UoM	Mixing Density lbm/gal	Yield ft ³ /sac k	Mix Fluid Gal	Rate bbl/mi n	Total Mix Fluid Gal
1	Clean Spacer III	CLEANSPACER III	40	bbl	10.5	3.86			
	0 gal/bbl	FRESH WATER							

Fluid #	Stage Type	Fluid Name	Qty	Qty UoM	Mixing Density lbm/gal	Yield ft3/sac k	Mix Fluid Gal	Rate bbl/mi n	Total Mix Fluid Gal	
2	ExtendaCem	EXTENDACEM (TM) SYSTEM	450	Sack	12	1.99		4	10.59	
0.20 %		SUPER CBL, 50 LB PAIL (100003668)								
10.59 Gal		FRESH WATER								
3 %		SALT, 100 LB BAG (100003652)								
Fluid #	Stage Type	Fluid Name	Qty	Qty UoM	Mixing Density lbm/gal	Yield ft3/sac k	Mix Fluid Gal	Rate bbl/mi n	Total Mix Fluid Gal	
3	HalCem	HALCEM (TM) SYSTEM	115	Sack	15.8	1.51		4	6.17	
0.25 %		HR-5, 50 LB SK (100005050)								
6.17 Gal		FRESH WATER								
0.1250 lbm		POLY-E-FLAKE (101216940)								
Fluid #	Stage Type	Fluid Name	Qty	Qty UoM	Mixing Density lbm/gal	Yield ft3/sac k	Mix Fluid Gal	Rate bbl/mi n	Total Mix Fluid Gal	
4	Displacement		0	bbl	9.5					
Cement Left In Pipe		Amount	81 ft		Reason			Shoe Joint		
Comment										

HALLIBURTON

CONOCO/PHILLIPS COMPANY EBUSINESS
 CONOCO/PHILLIPS SUNSET 4:65 21-22 1H INTERMEDIATE
 Case 1

1.1 Job Event Log

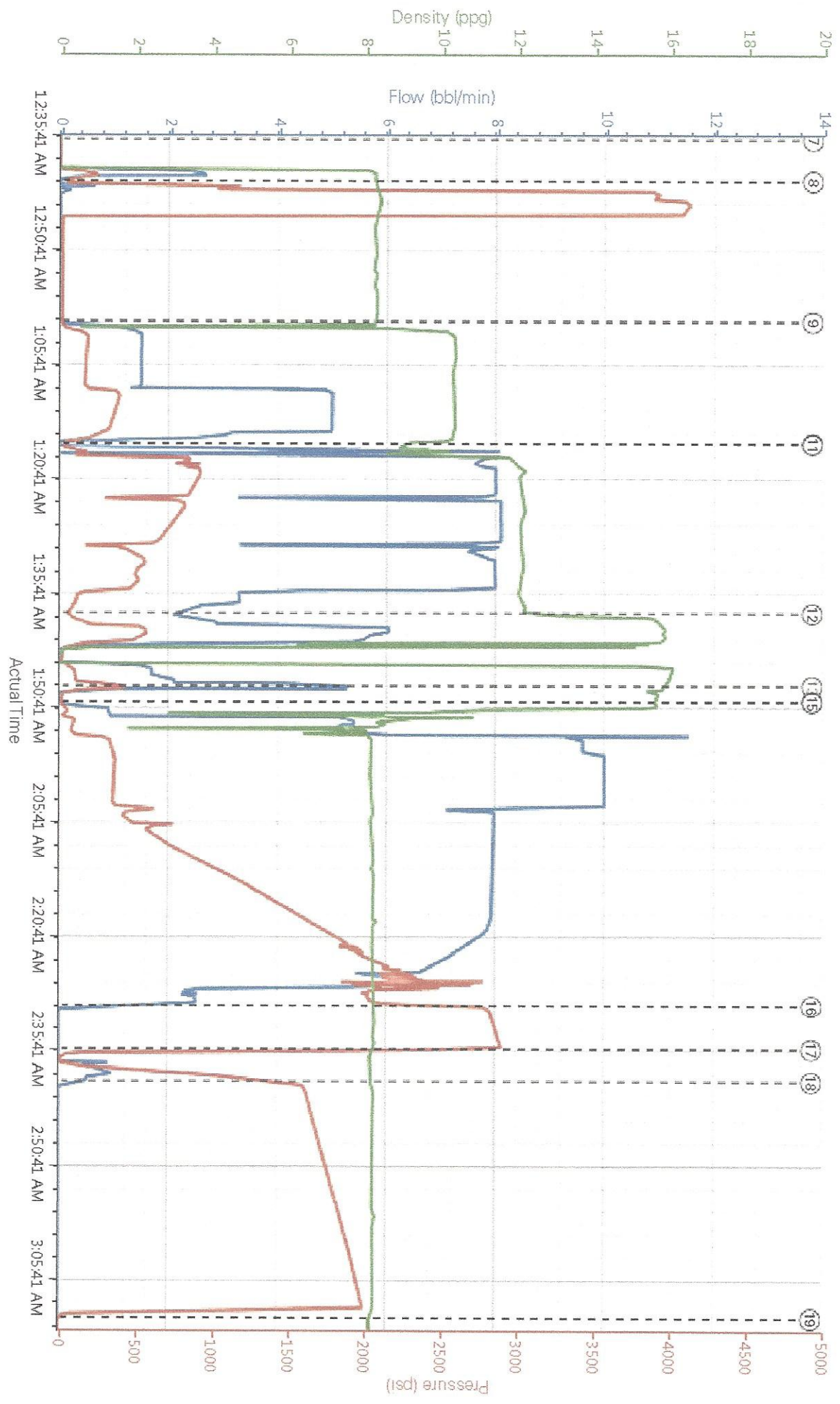
Type	Seq. No.	Activity	Graph Label	Date	Time	Source	Comb Pump Rate (bbl/min)	PS Pump Press (psi)	DH Density (ppg)	Comment
Event	1	Arrive at Location from Service Center	Arrive at Location from Service Center	4/11/2014	18:30:00	USER				WITH ALL EQUIPMENT AND MATERIALS, CHECKED IN WITH COP HSE REP AND CUSTOMER REP. RIG STILL RUNNING CASING
Event	2	Assessment Of Location Safety Meeting	Assessment Of Location Safety Meeting	4/11/2014	19:00:00	USER				HAZARD AND WATER TEST PERFORMED
Event	3	Pre-Rig Up Safety Meeting	Pre-Rig Up Safety Meeting	4/11/2014	19:30:00	USER				WITH HES CREW TO DISCUSS RIG-UP SAFETY.
Event	4	Rig-Up Equipment	Rig-Up Equipment	4/11/2014	19:45:00	USER				HES CREW RIGGED UP BULK EQUIPMENT WATER AND IRON TO WASHUP WHILE RIG WAS RUNNING CASING, HES CREW STAYED CLEAR OF BUFFER ZONE
Event	5	Rig-Up Completed	Rig-Up Completed	4/11/2014	20:20:02	USER				WITH CUSTOMER REP AND RIG CREW TO DISCUSS JOB SAFETY AND PUMP SCHEDULE
Event	6	Pre-Job Safety Meeting	Pre-Job Safety Meeting	4/12/2014	00:00:00	USER	0.00	-1.00	8.32	
Event	7	Start Job	Start Job	4/12/2014	00:36:40	USER	0.00	-2.00	-0.12	
Event	8	Test Lines	Test Lines	4/12/2014	00:42:06	USER	0.00	45.00	8.31	@ 4000 PSI
Event	9	Pump Spacer 1	Pump Spacer 1	4/12/2014	01:00:27	COM7				40 BBLs CLEAN SPACER @ 10.5 PPG, 3.86 YIELD, 24.2 GAL/SK
Event	10	Drop Bottom Plug	Drop Bottom Plug	4/12/2014	01:16:26	COM7	0.00	20.00	8.90	PRE-LOADED BOTTOM PLUG IN PLUG CONTAINER VERIFIED BY CUSTOMER REP.
Event	11	Pump Lead Cement	Pump Lead Cement	4/12/2014	01:16:30	COM7	0.00	19.00	8.89	160 BBLs, 450 SKS @ 12 PPG, 1.99 YIELD, 10.59 GAL/SK, VERIFIED USING PRESSURIZED SCALES

HALLIBURTON

CONOCO/PHILLIPS COMPANY EBUSINESS
 CONOCO/PHILLIPS SUNSET 4-65 21-22 1H INTERMEDIATE
 Case 1

Event	12	Pump Tail Cement	Pump Tail Cement	4/12/2014	01:38:40	COM7						31 BBL, 115 SKS @ 15.8 PPG, 1.51 YIELD, 6.17 GAL/SK, VERIFIED USING PRESSURIZED SCALES.
Event	13	Shutdown	Shutdown	4/12/2014	01:48:18	COM7						
Event	14	Drop Top Plug	Drop Top Plug	4/12/2014	01:50:18	COM7	0.00	13.00	15.64			PRE-LOADED TOP PLUG IN PLUG CONTAINER, VERIFIED BY CUSTOMER REP. 294 BBL FRESH WATER DISPLACEMENT
Event	15	Pump Displacement	Pump Displacement	4/12/2014	01:50:23	COM7						
Event	16	Bump Plug	Bump Plug	4/12/2014	02:30:06	COM7	0.00	2820.00	8.30			FINAL CIRCULATING PRESSURE 2069, FLOAT SHELD, 3 BBL BACK
Event	17	Check Floats	Check Floats	4/12/2014	02:35:57	USER	0.00	378.00	8.15			
Event	18	Other	Other	4/12/2014	02:40:05	COM7						CASING TEST @ 1500 PSI FOR 30 MIN
Event	19	End Job	End Job	4/12/2014	03:11:02	USER	0.00	1.00	8.16			
Event	20	Pre-Rig Down Safety Meeting	Pre-Rig Down Safety Meeting	4/12/2014	03:15:00	USER	0.00	2.00	8.13			WITH HES CREW AND RIG CREW
Event	21	Rig-Down Equipment	Rig-Down Equipment	4/12/2014	03:30:00	USER	0.00	2.00	8.23			HES CREW RIGGED DOWN DISCHARGE IRON FROM THE FLOOR DURING WASH UP
Event	22	Rig-Down Completed	Rig-Down Completed	4/12/2014	04:20:00	USER						
Event	23	Depart Location for Service Center or Other Site	Depart Location for Service Center or Other Site	4/12/2014	04:30:00	USER						THANKS AARON SMITH AND CREW

CONOCO/PHILLIPS SUNSET 4-65 21-22 1H INTERMEDIATE



Comb Pump Rate (bbl/min)
 PS Pump Press (psi)
 DH Density (ppg)

HALLIBURTON | iCem® Service

Created: 2014-04-11 20:16:28, Version: 3.0.121

Customer: CONOCO/PHILLIPS COMPANY
 EBUSINESS
Representative: AARON SMITH
Job Date: 4/11/2014 9:43:58 PM
Sales Order #: 901251821
Well: SUNSET 4-65 21-22 1H