

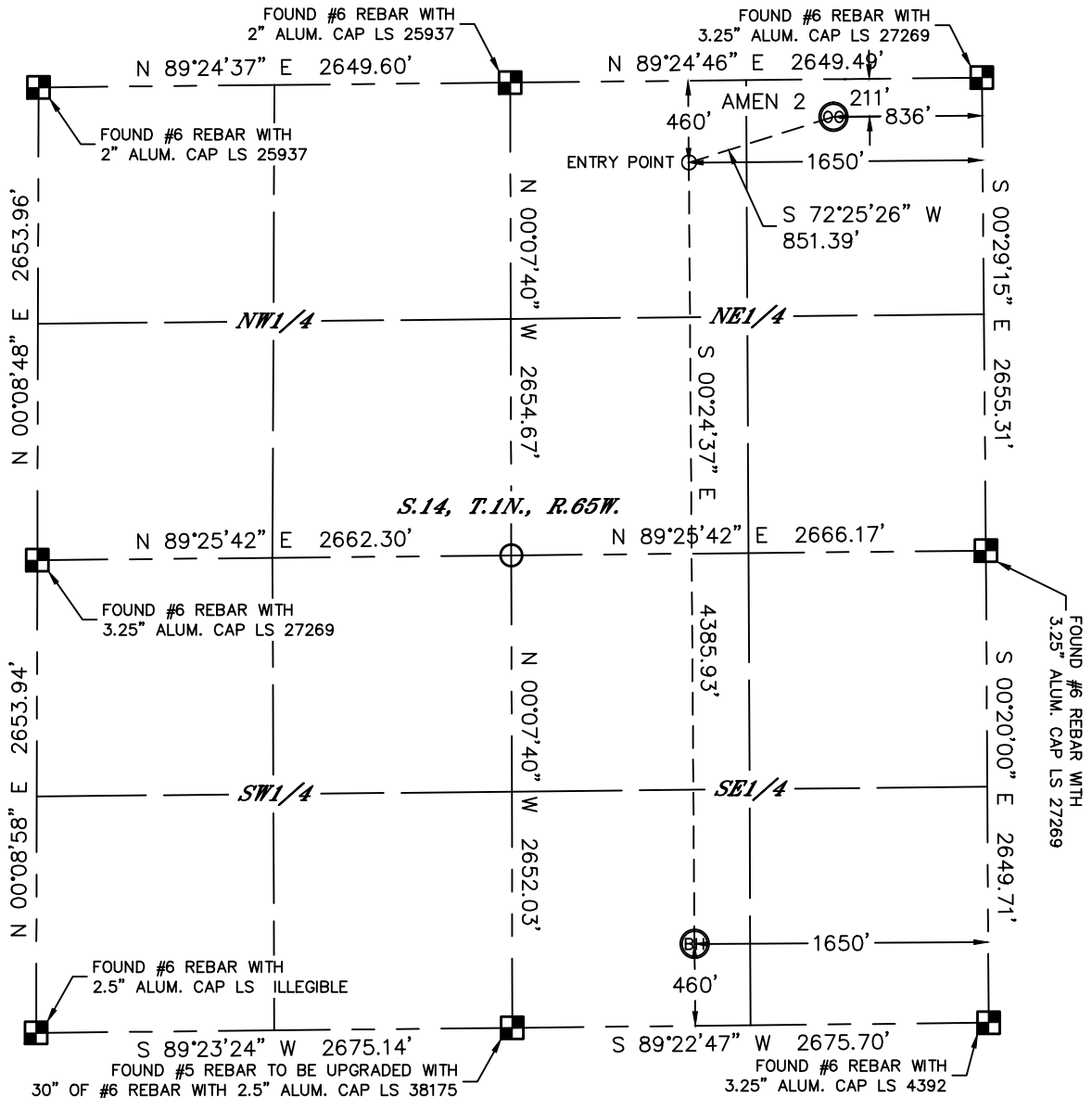


Lat40°, Inc. 1635 Foxtrail Drive, Suite 325 Loveland, CO 970-776-3321

WELL LOCATION CERTIFICATE

THIS MAP DOES NOT REPRESENT A BOUNDARY SURVEY

SECTION: 14
TOWNSHIP: 1N
RANGE: 65W



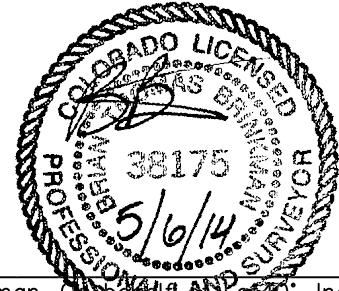
In accordance with a request from Arthur Beecherl with VERDAD OIL & GAS CORPORATION, Lat40°, Inc. has determined the surface location of the AMEN 2 to be 211' from the NORTH line and 836' from the EAST line and the bottom hole to be 460' from the SOUTH line and 1650' from the EAST line as measured at right angles from the section lines of Section 14, Township 1 North, Range 65 West of the Sixth Principal Meridian, County of Weld, State of Colorado.

I hereby state that this Well Location Certificate was prepared by me, or under my direct supervision, that the fieldwork was completed on 4/17/2014, for and on behalf of VERDAD OIL & GAS CORPORATION. That this is not a Land Survey Plat or an Improvement Survey Plat, and that it is not to be relied upon for establishment of fence, building, or other future improvement lines.

SURFACE LOCATION
LAT: 40.05816°N
LONG: 104.62454°W
PDOP: 2.1
ELEV: 4989'
1/4, 1/4: NENE

BOTTOM HOLE
LAT: 40.04544°N
LONG: 104.62749°W

ENTRY POINT
LAT: 40.05747°N
LONG: 104.62745°W



Brian T. Brinkman—Owner, Lat40°, Inc.
Colorado Licensed Professional Land Surveyor
DATE: 5/6/2014
PROJECT#: 2014028

- NOTE:**
- Bearings shown are Grid Bearings of the Colorado State Plane Coordinate System, North Zone, North American Datum 1983/2007. The lineal dimensions as contained herein are based upon the "U.S. Survey Foot."
 - Ground elevations are based on an observed GPS elevation (NAVD 1988 DATUM).
 - IMPROVEMENTS: See LOCATION DRAWING for all visible improvements within 500' of disturbed area.
 - SURFACE USE: CROP LAND
 - INSTRUMENT OPERATOR: ADAM KELLY
 - NEAREST CULTURAL ITEMS:
BUILDING: 647' NE
BUILDING UNIT: 714' NE
HIGH OCCUPANCY BUILDING UNIT: 5280'+
DESIGNATED OUTSIDE ACTIVITY AREA: 5280'+
PUBLIC ROAD: 201' N (COUNTY ROAD 10)
ABOVEGROUND UTILITY: 732' NE
RAILROAD: 5280'+
PROPERTY LINE: 211' N

LEGEND

- = ALIQUOT MONUMENT AS DESCRIBED
- = CALCULATED POSITION

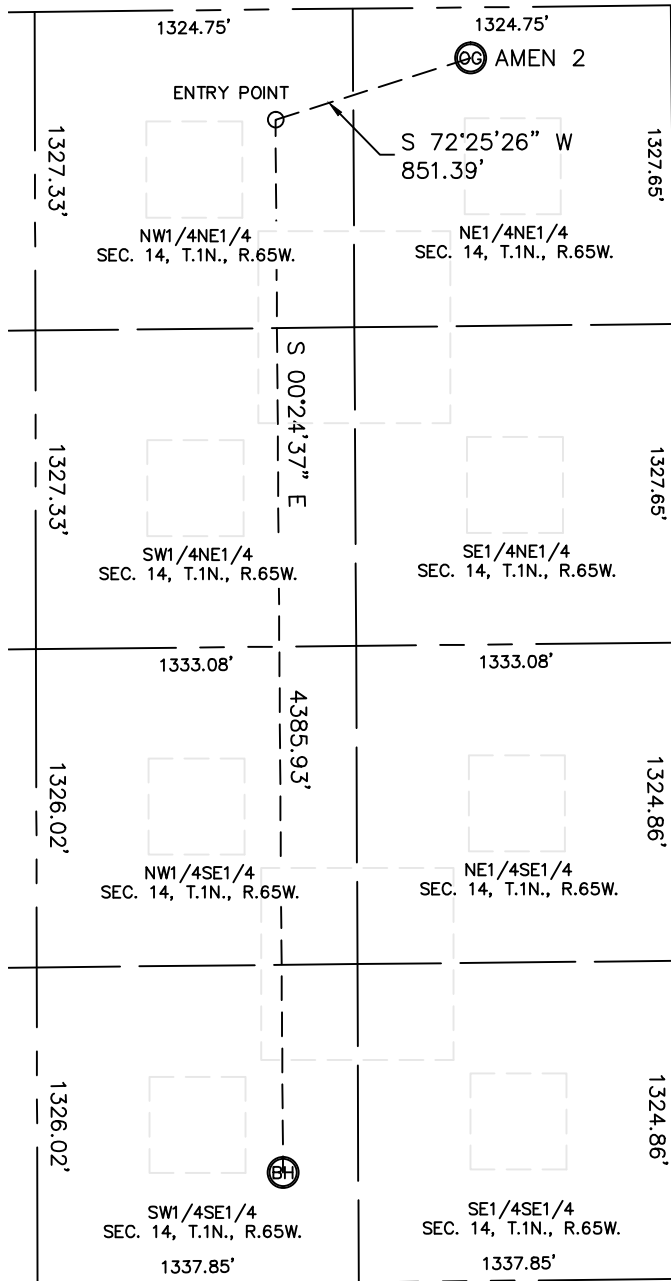




SITE SKETCH

AMEN 2

SECTION: 14
TOWNSHIP: 1N
RANGE: 65W



NOTE: NO EXISTING WELLS ADJACENT TO PROPOSED WELL BORE.

