



CEMENT BOND WITH NUCLEAR LOG

COMPANY	ADOLPH COORS COMPANY
WELL	USA #1-17 J.C.
FIELD	WILDCAT
COUNTY	MESA
	STATE COLORADO
LOCATION:	2000 SNL & 1000 FWL
SEC. 17	TWP. 9S
	RGE. 98W
G.T.	ELEV. 5811
K.B.	FT. ABOVE PERM. DATUM
K.B.	11
	ELEV. 5822
	D.F.
	G.I. 5811
	OTHER SERVICES:

Date	11-04-80	Type Fluid in Hole	Water
Run No.	One	Dens.	Visc.
Depth—Driller	7515	Max. Rec. Temp.	
Depth—Logger	7384	Est. Cement Top	
Btm. Log Interval	7390	Equip. Location	6033
Top Log Interval	6600	Recorded By	Chapman
Open Hole Size	7 7/8	Witnessed By	Mr. Nelms
CASING REC.	Size	Wt/Ft	Grade
Surface String			Type Joint
Prot. String			Top
Prod. String	4½		Bottom
Liner			T.D.
PRIMARY CEMENTING DATA			
STRING	Surface	Protection	Liner
Vol. of cement		Production	
Type of cement			
Additive			
Additive by %			
Retarder			
Retarder by %			
Wt. of slurry			
Water loss			
Drill. mud type			
Drilling mud wt.			

COMPRESSIVE STRENGTH (p.s.i.)	Curing Temp.)
-------------------------------	---------------

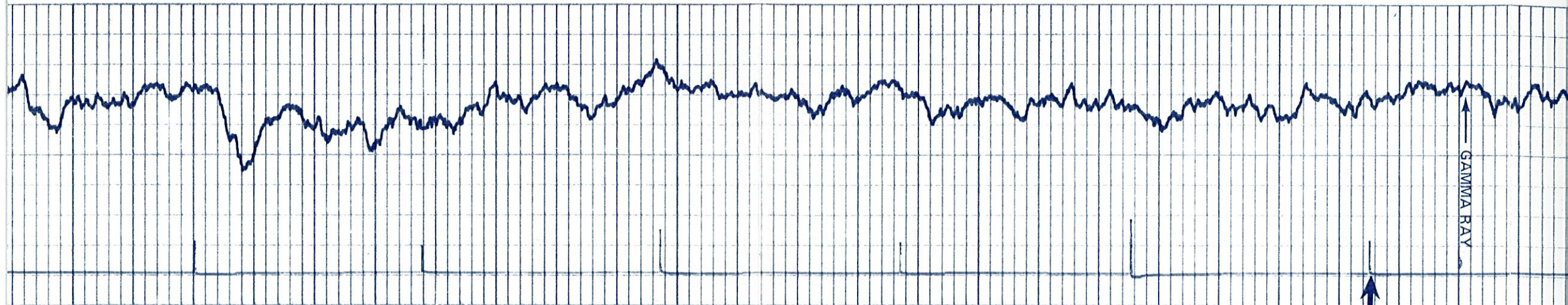
Time Elapsed	Surface	Protective	Production	Liner
24 hrs.	° F	° F	° F	° F
48 hrs.	° F	° F	° F	° F
72 hrs.	° F	° F	° F	° F

PRIMARY CEMENTING PROCEDURE

PRIMARY CEMENTING PROCEDURE				Bond Equipment Data	
	Hour — date	Hours from start of operation	Run No.	Type standoff	Rubber 482
Started pumping cement				Logging speed	30 ft./min.
Plug on bottom				Sig. Sen.	182
Release pressure				Out. Sen.	82
Start Cement Bond Log				T-R Spacing	3 ft.
Finish Cement Bond Log				Tool Type	Comb. 3 3/4
Preceding fluid	Volume			Pipe reciprocated during Pumping:	Yes No
Returns: Full	Partial	None		Pipe reciprocated after plug down:	Yes min., No

GAMMA-RAY	Depths	AMPLITUDE CURVE BOUNDING INCREASES	SEISMIC SPECTRUM
-----------	--------	---------------------------------------	------------------

GAMMA-RAY		SEISMIC SPECTRUM	
Collar Log	Depths	AMPLITUDE CURVE BONDING INCREASES ↑	
<div> <div>Gamma Ray Zero</div> <div>Div. Left of This Line</div> </div>	6600	<div> <div>0</div> <div>MILLIVOLTS</div> <div>50</div> <div>0</div> <div>MICRO SECONDS</div> <div>1000</div> </div>	<div> <div>100%</div> <div>Bonding</div> <div>0%</div> </div>



GAMMA RAY

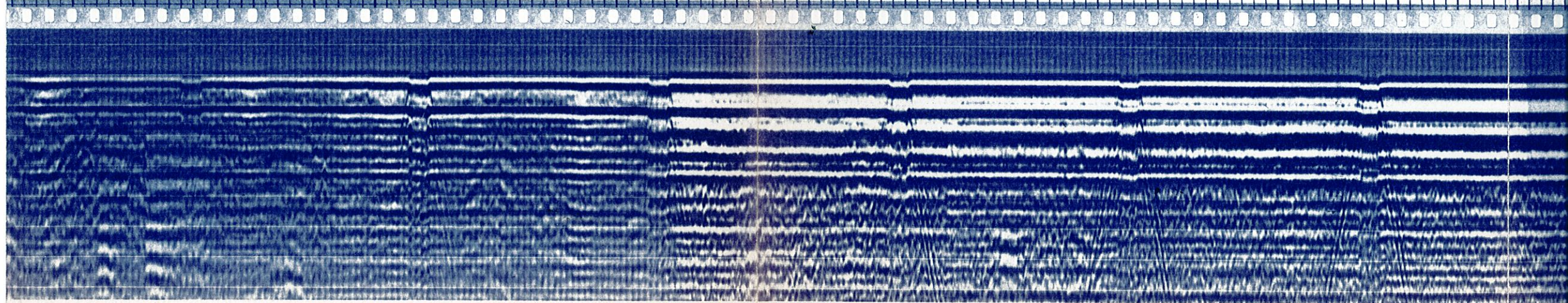
Casing Collars

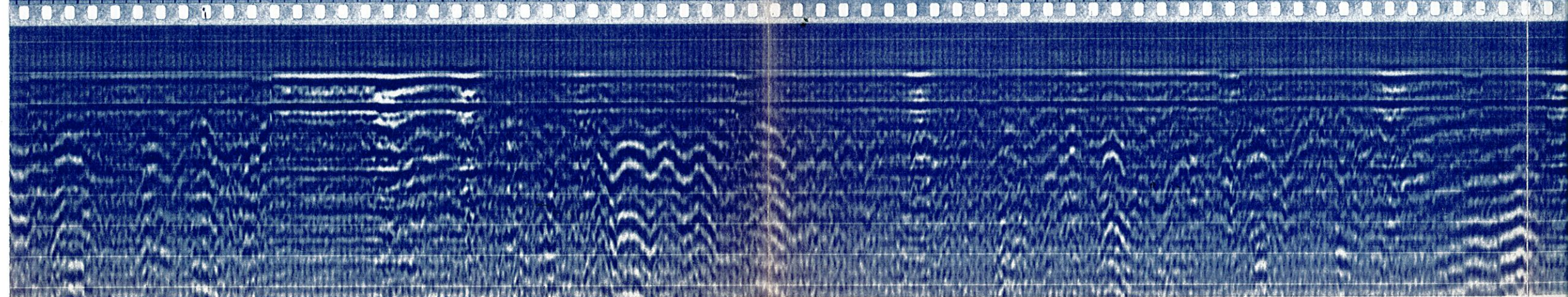
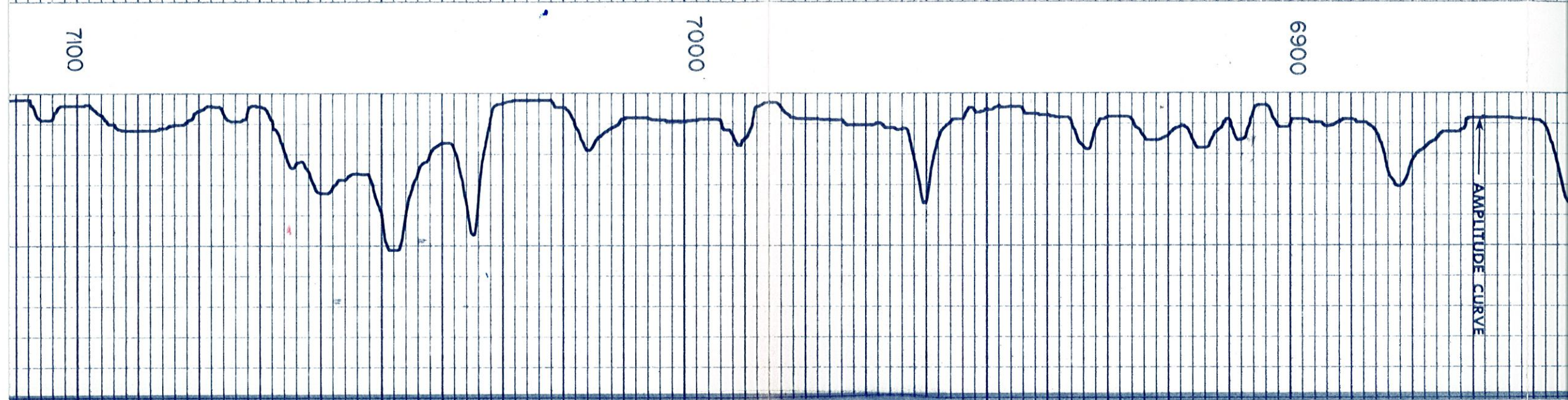
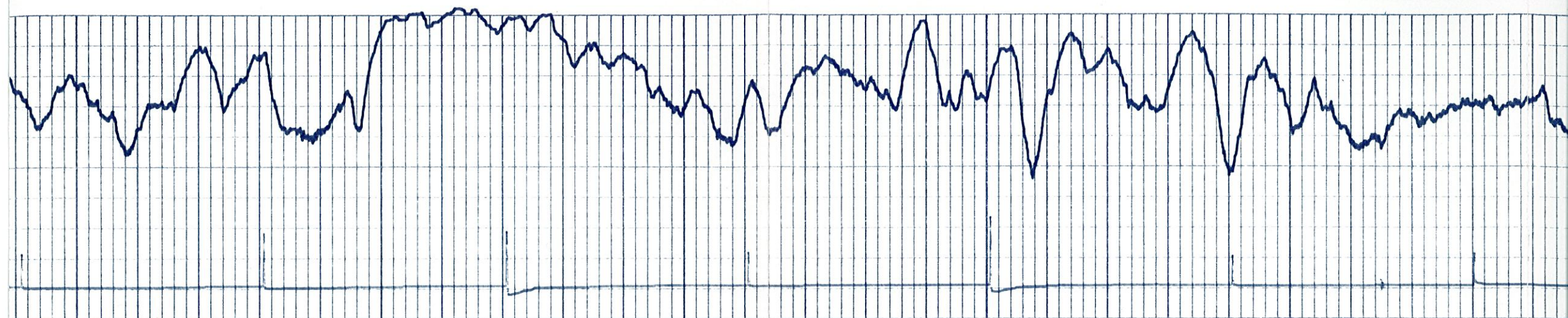
6700

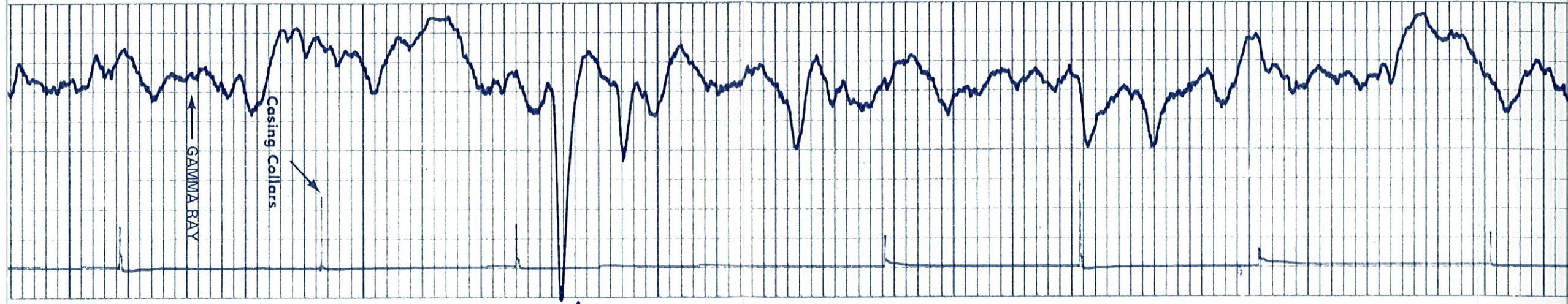
6800



INDICATED TOP OF CEMENT



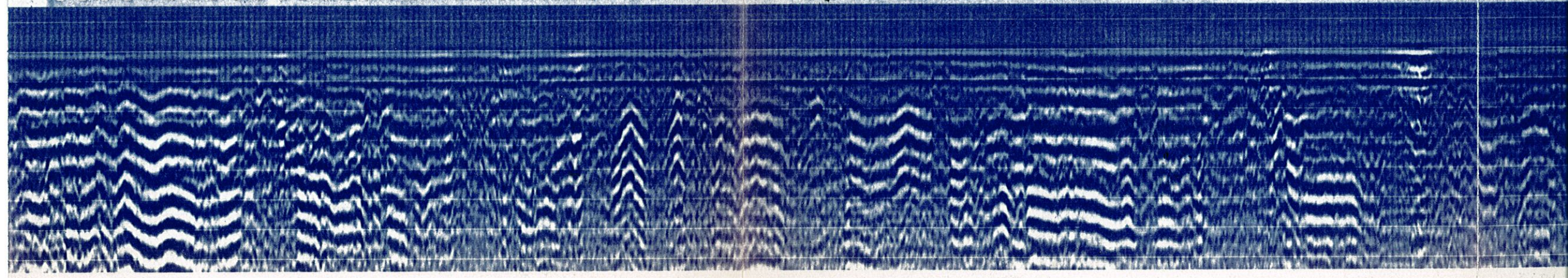
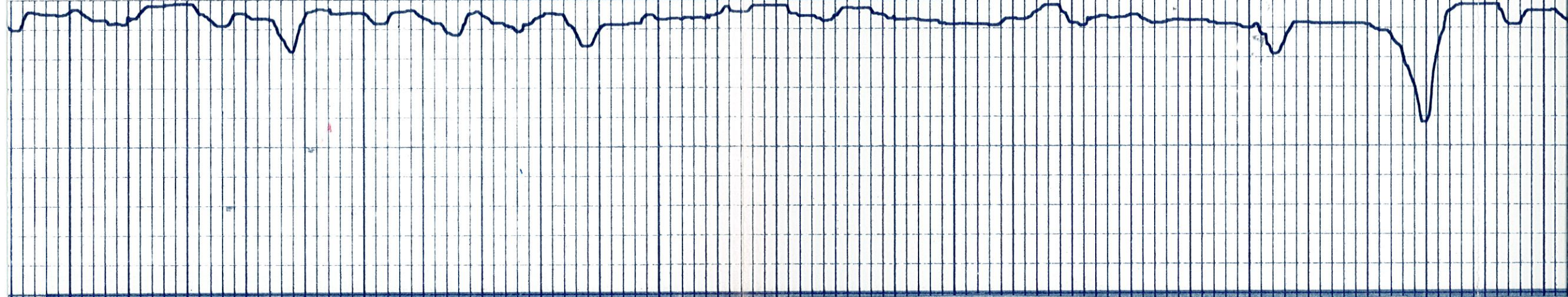


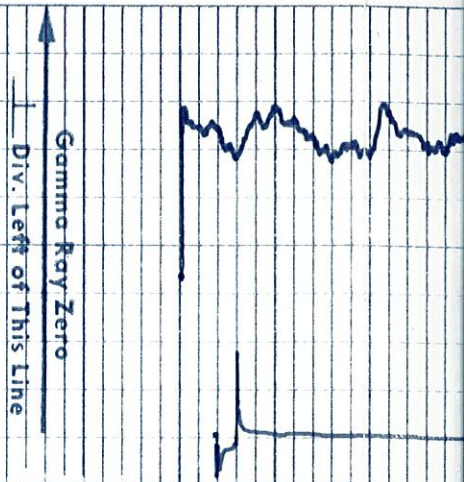


7300

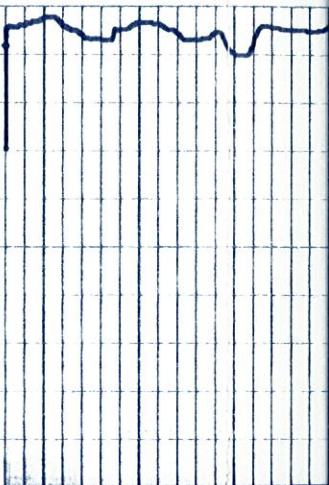
7200

7100





RD 7384
TPD 7390



SEISMIC SPECTRUM



REPEAT SECTION



GAMMA RAY
COLLAR LOG

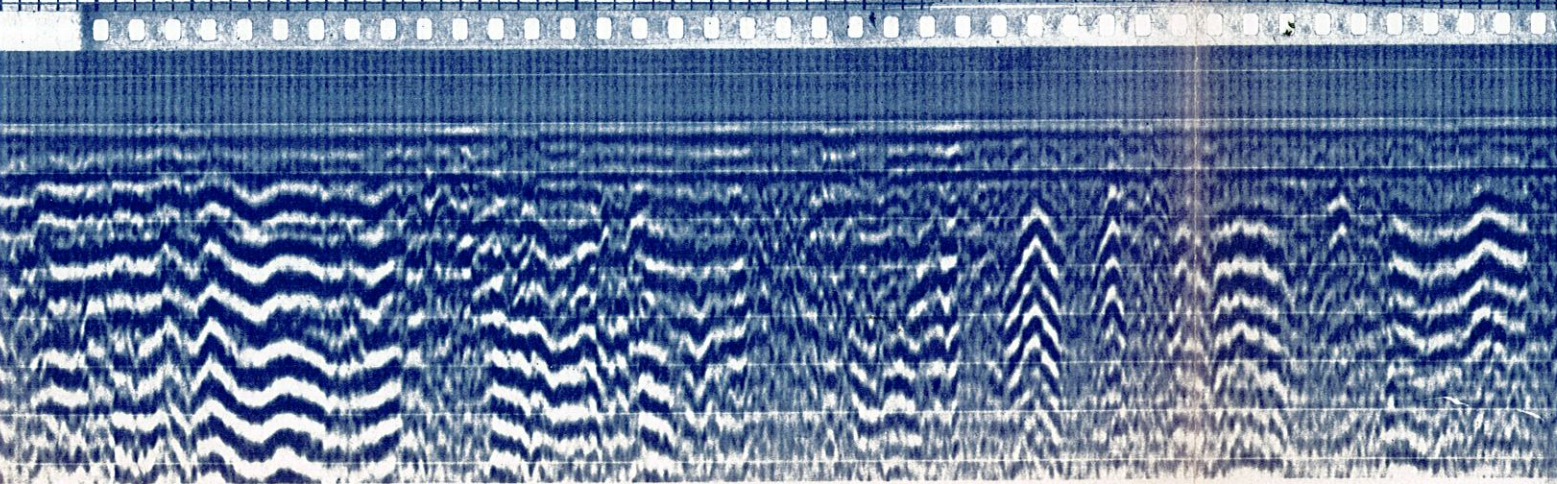
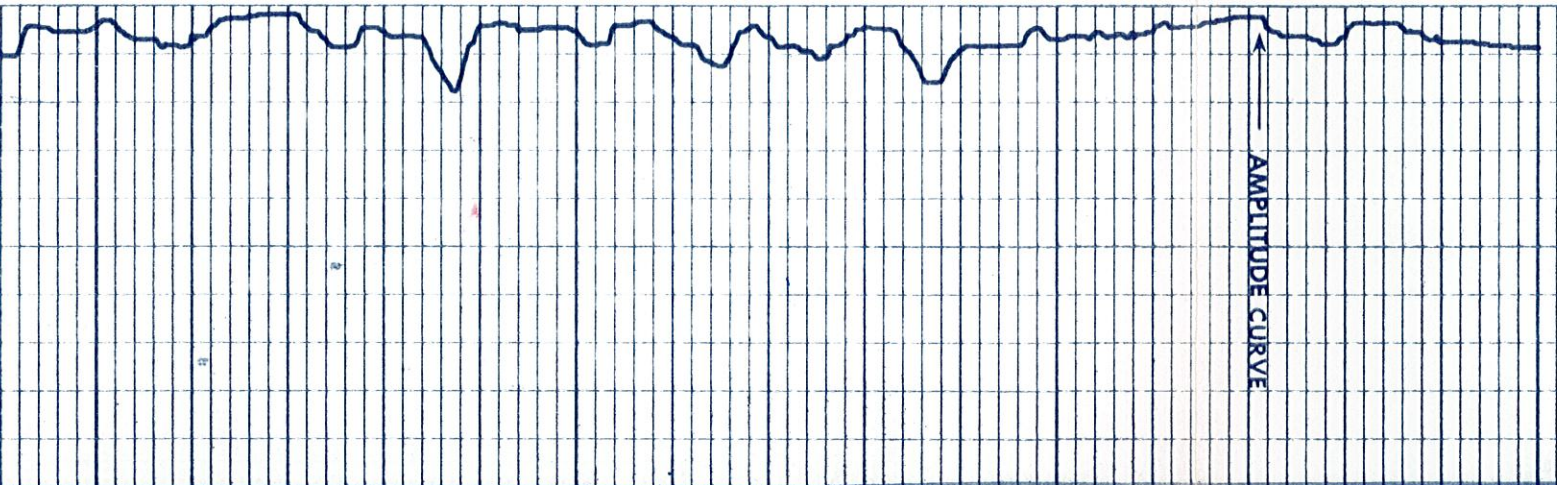
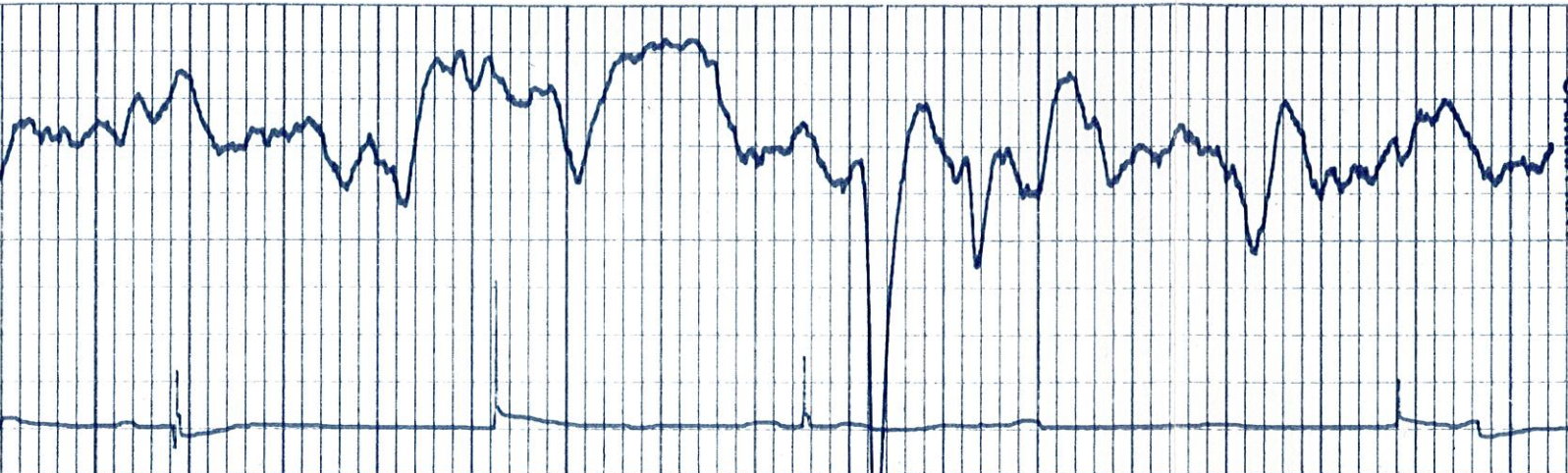


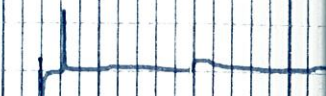
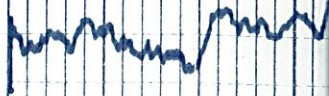
SEISMIC SPECTRUM

7200

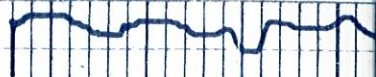
AMPLITUDE CURVE

7300

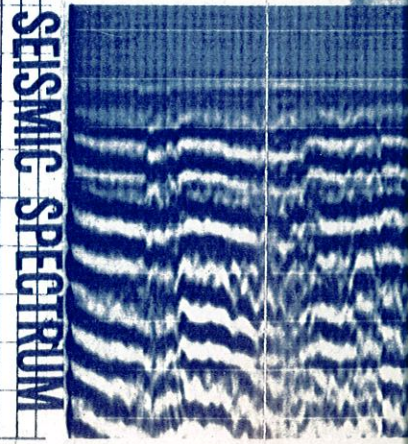




RD 7384
TID 7390



100% Bonding 0%



SEISMIC SPECTRUM

PEN SPACING CHECK

COLLAR LOG

GAMMA RAY

AMPLITUDE

CALIBRATION SIGNAL

GATED SIGNAL

CALIBRATION

0% Bonding

100% Bonding

Span Adjust

Zero

Handwritten scribbles

