

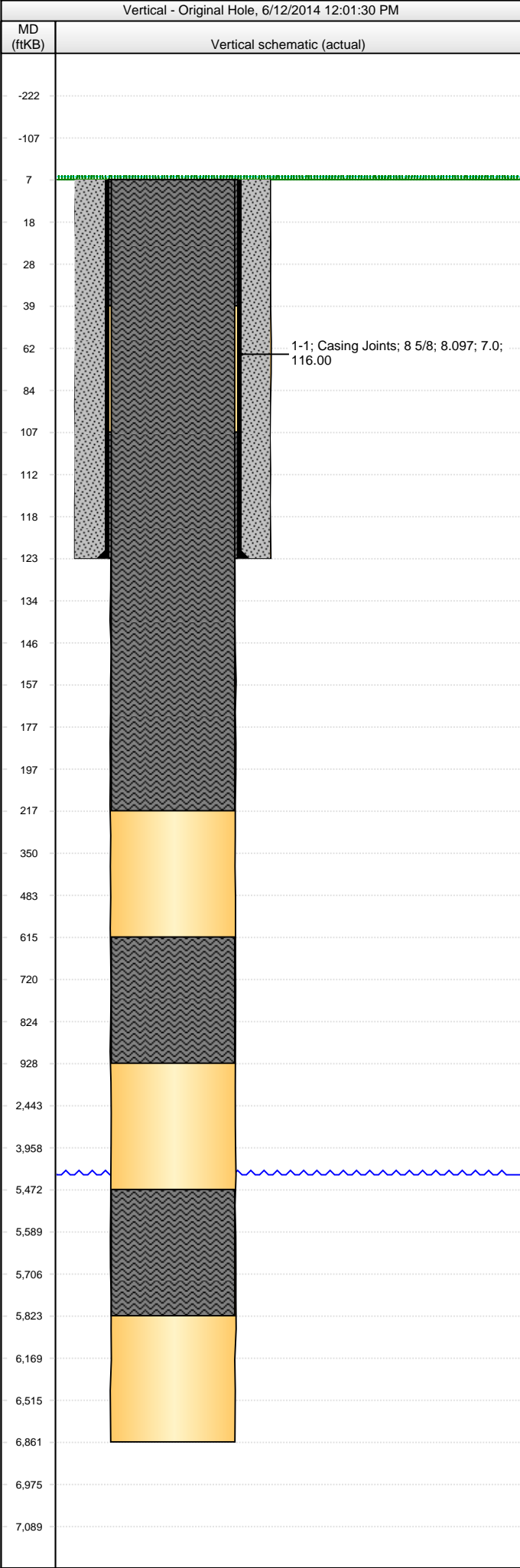


Whiting Oil & Gas Corp
1700 Broadway, Suite 2300
Denver, CO 80290
(303) 837-1661

WOGC Well History Schematic Report

Well Name: FREGEAU 2

API Number 051230750200		WPC ID		Well Permit Number		Field Name Mitigation-DJ Basin		County Weld		State CO	
Well Configuration Type Vertical				Orig KB Elv (ft) 4,950.00		Ground Elevation (ft) 4,943.00		Casing Flange Elevation (ft)		Tubing Head Elevation (ft) 6,861.0	
Original Spud Date 7/11/1972		Completion Date 7/22/1972		Asset Group Redtail Asset Group			Responsible Engineer James Kopp		N/S Dist (ft) 940.0		N/S Ref FSL
									E/W Dist (ft) 960.0		E/W Ref FEL
Lot	Quarter 1 SE	Quarter 2 SE	Quarter 3	Quarter 4	Section 9	Section Suffix	Section Type	Township 10	Township N/S Dir N	Range 58	Range E/W Dir W
										Meridian 6TH	



Jobs						
Job Type			Start Date		Summary	
Drill & Abandon			7/11/1972			
Plug & Abandon			5/1/2014			
Perforations						
Type of Hole		Date		Top (ftKB)		Btm (ftKB)
Stim/Treat Stages						
Stage Type	Start Date	Top (ftKB)	Btm (ftKB)	Stim/Treat Fluid		Vol Clean Pump (bbl)
Wellbore Sections						
Section Des	Wellbore Name	Size (in)	Act Top (ftKB)	Act Btm (ftKB)	Start Date	
Surface	Original Hole	12 1/4	7.0	123.0	7/11/1972	
Open Hole	Original Hole	7 7/8	123.0	6,861.0	7/22/1972	
Surface Csg, 123.0ftKB						
Comment						
OD (in)	Wt (lb/ft)	Grade	Top (ftKB)	Btm (ftKB)	Len (ft)	Item Des
8 5/8	24.00	J-55	7.0	123.0	116.00	Casing Joints
Cement Stages						
Des		Top (ftKB)	Btm (ftKB)	Top Meas Meth		Pump Start Date
Surface Casing Cement		7.0	123.0			7/22/1972
Cement Plug		123.0	157.0			7/22/1972
Cement Plug		107.0	123.0			7/22/1972
Cement Plug		7.0	39.0			7/22/1972
Cement Plug		5,472.3	5,823.4			5/16/2014
Cement Plug		615.4	927.7			5/19/2014
Cement Plug		7.0	217.2			5/20/2014
Other In Hole						
Des			OD (in)	ID (in)	Run Date	Top (ftKB) Btm (ftKB)
<des> set at <depth>ftKB on <dt>mmrun>						
Set Depth (ftKB)		Comment			Run Date	Pull Date
Item Des			OD (in)	Len (ft)	Top (ftKB)	Btm (ftKB)
<des> on <dt>mmrun>						
Rod Description					Run Date	
Item Des			OD (in)	Len (ft)	Top (ftKB)	Btm (ftKB)

Com

THIS WELL IS LOCATED WITHIN 1500' OF PROPOSED WELLS IN THE RAZOR 21A AND 21B PAD AND IS THEREFORE SUBJECT TO THE DJ BASIN HORIZONTAL OFFSET POLICY.