



5/19/2014

VIA ELECTRONIC TRANSMITTAL

Colorado Oil and Gas Conservation Commission
Attn: Matt Lepore, Director
1120 Lincoln Street, Suite 801
Denver, CO 80203

RE: Rule 318A.a Proposed Spacing Unit Request,

Verdad Oil & Gas Corp – 1 well of five (5) well Amen Pad:
Amen 3: Top Production Zone at 460' FNL, 1320' FEL, Sec. 14-T1N-R65W
BHL at 460' FSL, 1320' FEL, Sec. 14-T1N-R65W
Surface Pad NENE Sec. 14-T1N-R65W, Weld County, Colorado

Dear Mr. Lepore,

Verdad Oil & Gas Corporation (Verdad) is planning to drill the captioned well in accordance with the provisions of COGCC Rule 318A.e.

Verdad Oil & Gas Corp. (Verdad's) proposed wellbore spacing unit for this well consists of E/2 Sec. 14-T1N-R65W (See attached Map).

Notice letters required under COGCC Rule 318A.e.(6) were Mailed on 5/8/2014 and to our knowledge no objections have been filed.

Sincerely,

Clayton L. Doke
Senior Engineer
Integrated Petroleum Technologies, Inc.
Consultants to Verdad Oil & Gas Corp.

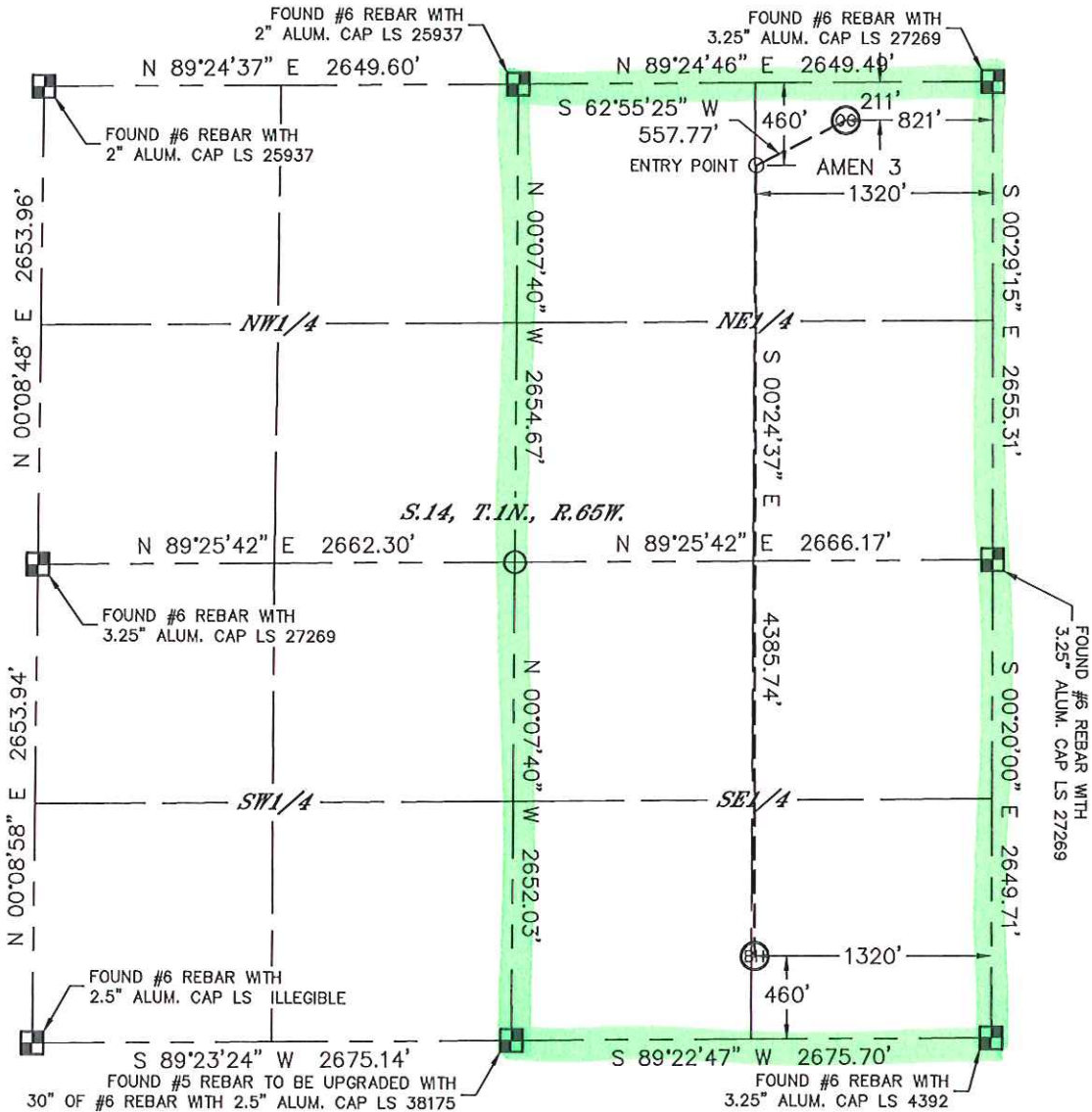


Lat40°, Inc. 1635 Foxtrail Drive, Suite 325 Loveland, CO 970-776-3321

WELL LOCATION CERTIFICATE

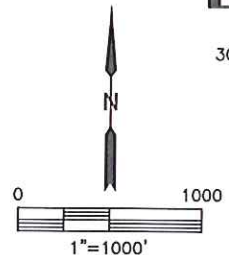
SECTION: 14
TOWNSHIP: 1N
RANGE: 65W

THIS MAP DOES NOT REPRESENT A BOUNDARY SURVEY



In accordance with a request from Arthur Beecherl with VERDAD OIL & GAS CORPORATION, Lat40°, Inc. has determined the surface location of the AMEN 3 to be 211' from the NORTH line and 821' from the EAST line and the bottom hole to be 460' from the SOUTH line and 1320' from the EAST line as measured at right angles from the section lines of Section 14, Township 1 North, Range 65 West of the Sixth Principal Meridian, County of Weld, State of Colorado.

I hereby state that this Well Location Certificate was prepared by me, or under my direct supervision, that the fieldwork was completed on 4/17/2014, for and on behalf of VERDAD OIL & GAS CORPORATION. That this is not a Land Survey Plat or an Improvement Survey Plat, and that it is not to be relied upon for establishment of fence, building, or other future improvement lines.



- NOTE:**
- 1) Bearings shown are Grid Bearings of the Colorado State Plane Coordinate System, North Zone, North American Datum 1983/2007. The lineal dimensions as contained herein are based upon the "U.S. Survey Foot."
 - 2) Ground elevations are based on an observed GPS elevation (NAVD 1988 DATUM).
 - 3) IMPROVEMENTS: See LOCATION DRAWING for all visible Improvements within 500' of disturbed area.
 - 4) SURFACE USE: CROP LAND
 - 5) INSTRUMENT OPERATOR: ADAM KELLY
 - 6) NEAREST CULTURAL ITEMS:
BUILDING: 632' NE
BUILDING UNIT: 699' NE
HIGH OCCUPANCY BUILDING UNIT: 5280'+
DESIGNATED OUTSIDE ACTIVITY AREA: 5280'+
PUBLIC ROAD: 201' N (COUNTY ROAD 10)
ABOVEGROUND UTILITY: 717' NE
RAILROAD: 5280'+
PROPERTY LINE: 211' N

SURFACE LOCATION
LAT: 40.05816N
LONG: 104.62449W
PDOP: 2.0
ELEV: 4989'
1/4,1/4: NENE

BOTTOM HOLE
LAT: 40.04544N
LONG: 104.62631W

ENTRY POINT
LAT: 40.05747N
LONG: 104.62627W

- LEGEND**
- = ALIQUOT MONUMENT AS DESCRIBED
 - = CALCULATED POSITION



Brian T. Brinkman—On Behalf of Lat40°, Inc.
Colorado Licensed Professional Land Surveyor No. 38175
DATE: 5/6/2014
PROJECT#: 2014028