



# KERR-MCGEE OIL & GAS ONSHORE LP

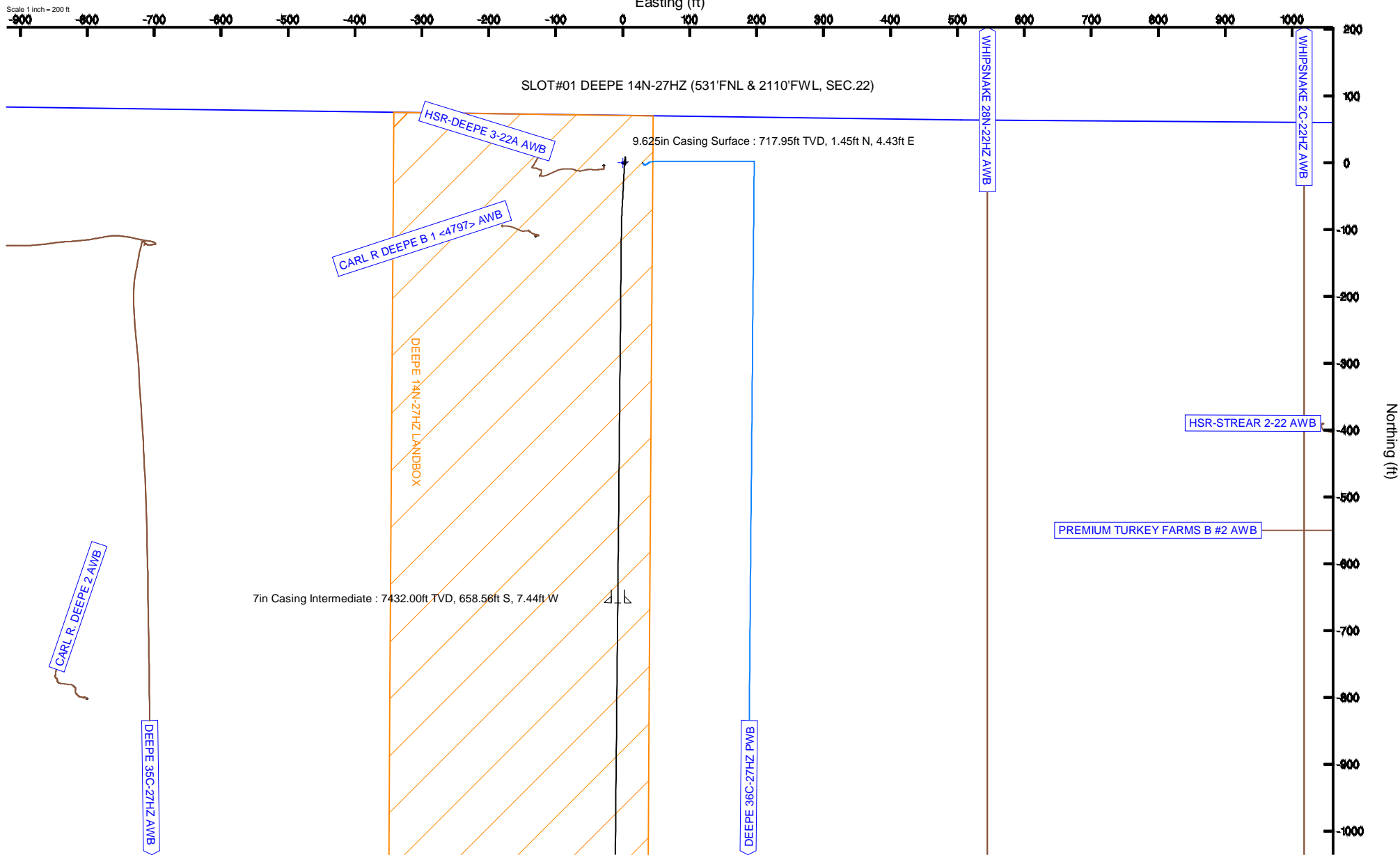
Location: COLORADO Slot: SLOT#01 DEEPE 14N-27HZ (531'FNL & 2110'FWL, SEC.22)  
 Field: WELD COUNTY (KERR MCGEE) Well: DEEPE 14N-27HZ  
 Facility: SEC.22-T2N-R67W Wellbore: DEEPE 14N-27HZ PWB

Plot reference wellpath is DEEPE 14N-27HZ (REV-A.0) PWP

True vertical depths are referenced to PRECISION 595 (25KB) (RKB)	Grid System: NAD83 / Lambert Colorado SP, Northern Zone (501), US feet
Measured depths are referenced to PRECISION 595 (25KB) (RKB)	North Reference: True north
PRECISION 595 (25KB) (RKB) to Mean Sea Level: 5032 feet	Scale: True distance
Mean Sea Level to Mud line (At Slot: SLOT#01 DEEPE 14N-27HZ (531'FNL & 2110'FWL, SEC.22)): 0 feet	Depths are in feet
Coordinates are in feet referenced to Slot	Created by: robiale01 on 10/Jun/2014



# ZOOMED SHL



# Planned Wellpath Report

DEEPE 14N-27HZ (REV-A.0) PWP

Page 1 of 8

## REFERENCE WELLPATH IDENTIFICATION

Operator	<b>KERR-MCGEE OIL &amp; GAS ONSHORE LP</b>	Slot	<b>SLOT#01 DEEPE 14N-27HZ (531'FNL &amp; 2110'FWL, SEC.22)</b>
Area	<b>COLORADO</b>	Well	<b>DEEPE 14N-27HZ</b>
Field	<b>WELD COUNTY (KERR MCGEE)</b>	Wellbore	<b>DEEPE 14N-27HZ PWB</b>
Facility	<b>SEC.22-T2N-R67W</b>		

## REPORT SETUP INFORMATION

Projection System	<b>NAD83 / Lambert Colorado SP, Northern Zone (501), US feet</b>	Software System	<b>WellArchitect® 4.0.0</b>
North Reference	<b>True</b>	User	<b>Robiale01</b>
Scale	<b>0.999959</b>	Report Generated	<b>10/Jun/2014 at 15:22</b>
Convergence at slot	<b>n/a</b>	Database/Source file	<b>WellArchitectDB/DEEPE_14N-27HZ_PWB.xml</b>

## WELLPATH LOCATION

	Local coordinates		Grid coordinates		Geographic coordinates	
	North[ft]	East[ft]	Easting[US ft]	Northing[US ft]	Latitude	Longitude
Slot Location	0.00	0.00	3173770.28	1290629.95	<b>40°07'46.204"N</b>	<b>104°52'42.769"W</b>
Facility Reference Pt			<b>3173770.27</b>	<b>1290629.95</b>	40°07'46.204"N	104°52'42.769"W
Field Reference Pt			<b>3197771.84</b>	<b>1268891.29</b>	40°04'09.600"N	104°47'36.000"W

## WELLPATH DATUM

Calculation method	<b>Minimum curvature</b>	PRECISION 595 (25'KB) (RKB) to Facility Vertical Datum	<b>5032.00ft</b>
Horizontal Reference Pt	<b>Slot</b>	PRECISION 595 (25'KB) (RKB) to Mean Sea Level	<b>5032.00ft</b>
Vertical Reference Pt	<b>PRECISION 595 (25'KB) (RKB)</b>	PRECISION 595 (25'KB) (RKB) to Mud Line at Slot (SLOT#01 DEEPE 14N-27HZ (531'FNL & 2110'FWL, SEC.22))	<b>5032.00ft</b>
MD Reference Pt	<b>PRECISION 595 (25'KB) (RKB)</b>	Section Origin	<b>N 0.00, E 0.00 ft</b>
Field Vertical Reference	<b>Mean Sea Level</b>	Section Azimuth	<b>180.56°</b>

# Planned Wellpath Report

DEEPE 14N-27HZ (REV-A.0) PWP

Page 2 of 8

REFERENCE WELLPATH IDENTIFICATION			
Operator	KERR-MCGEE OIL & GAS ONSHORE LP	Slot	SLOT#01 DEEPE 14N-27HZ (531'FNL & 2110'FWL, SEC.22)
Area	COLORADO	Well	DEEPE 14N-27HZ
Field	WELD COUNTY (KERR MCGEE)	Wellbore	DEEPE 14N-27HZ PWB
Facility	SEC.22-T2N-R67W		

WELLPATH DATA (186 stations) † = interpolated/extrapolated station										
MD [ft]	Inclination [°]	Azimuth [°]	TVD [ft]	Vert Sect [ft]	North [ft]	East [ft]	Latitude	Longitude	DLS [°/100ft]	Comments
0.00†	0.000	143.430	0.00	0.00	0.00	0.00	40°07'46.204"N	104°52'42.769"W	0.00	
25.00	0.000	143.430	25.00	0.00	0.00	0.00	40°07'46.204"N	104°52'42.769"W	0.00	TIE ON
125.00	0.700	143.430	125.00	0.49	-0.49	0.36	40°07'46.199"N	104°52'42.764"W	0.70	BEGIN GYRO SURVEYS
225.00	0.640	128.540	224.99	1.32	-1.33	1.16	40°07'46.191"N	104°52'42.754"W	0.18	
325.00	0.550	115.920	324.99	1.87	-1.89	2.03	40°07'46.185"N	104°52'42.743"W	0.16	
425.00	0.730	80.190	424.98	1.96	-1.99	3.09	40°07'46.184"N	104°52'42.729"W	0.43	
458.02†	0.684	66.760	458.00	1.84	-1.87	3.48	40°07'46.185"N	104°52'42.724"W	0.52	FOX HILLS BASE
525.00	0.720	38.230	524.97	1.35	-1.39	4.11	40°07'46.190"N	104°52'42.716"W	0.52	
625.00	0.930	3.090	624.96	0.04	-0.08	4.54	40°07'46.203"N	104°52'42.711"W	0.54	
643.00	0.950	355.240	642.96	-0.26	0.21	4.54	40°07'46.206"N	104°52'42.711"W	0.72	TIE ON; TIE ONTO GYRO SURVEYS
743.00†	0.950	355.240	742.95	-1.91	1.86	4.40	40°07'46.222"N	104°52'42.712"W	0.00	
843.00†	0.950	355.240	842.93	-3.56	3.52	4.26	40°07'46.239"N	104°52'42.714"W	0.00	
943.00†	0.950	355.240	942.92	-5.21	5.17	4.12	40°07'46.255"N	104°52'42.716"W	0.00	
1043.00†	0.950	355.240	1042.90	-6.86	6.82	3.99	40°07'46.271"N	104°52'42.718"W	0.00	
1143.00†	0.950	355.240	1142.89	-8.51	8.47	3.85	40°07'46.288"N	104°52'42.719"W	0.00	
1200.12	0.950	355.240	1200.00	-9.45	9.42	3.77	40°07'46.297"N	104°52'42.720"W	0.00	BEGIN NUDGE
1243.00†	0.145	308.272	1242.88	-9.84	9.81	3.70	40°07'46.301"N	104°52'42.721"W	2.00	
1343.00†	1.919	185.840	1342.86	-8.25	8.22	3.43	40°07'46.285"N	104°52'42.725"W	2.00	
1443.00†	3.917	184.049	1442.73	-3.17	3.15	3.02	40°07'46.235"N	104°52'42.730"W	2.00	
1543.00†	5.916	183.467	1542.36	5.38	-5.41	2.46	40°07'46.151"N	104°52'42.737"W	2.00	
1643.00†	7.916	183.178	1641.62	17.41	-17.43	1.77	40°07'46.032"N	104°52'42.746"W	2.00	
1743.00†	9.916	183.006	1740.41	32.89	-32.90	0.94	40°07'45.879"N	104°52'42.757"W	2.00	
1747.22	10.000	183.000	1744.56	33.62	-33.63	0.90	40°07'45.872"N	104°52'42.757"W	2.00	END NUDGE
1803.51	10.000	183.000	1800.00	43.39	-43.39	0.39	40°07'45.775"N	104°52'42.764"W	0.00	BEGIN DROP
1843.00†	9.210	183.000	1838.94	49.97	-49.97	0.04	40°07'45.710"N	104°52'42.768"W	2.00	
1943.00†	7.210	183.000	1937.91	64.24	-64.23	-0.70	40°07'45.569"N	104°52'42.778"W	2.00	
2043.00†	5.210	183.000	2037.32	75.04	-75.03	-1.27	40°07'45.463"N	104°52'42.785"W	2.00	
2143.00†	3.210	183.000	2137.04	82.38	-82.37	-1.65	40°07'45.390"N	104°52'42.790"W	2.00	
2243.00†	1.210	183.000	2236.96	86.23	-86.22	-1.86	40°07'45.352"N	104°52'42.793"W	2.00	
2303.51	0.000	180.557	2297.47	86.87	-86.85	-1.89	40°07'45.346"N	104°52'42.793"W	2.00	END DROP
2343.00†	0.000	180.557	2336.96	86.87	-86.85	-1.89	40°07'45.346"N	104°52'42.793"W	0.00	
2443.00†	0.000	180.557	2436.96	86.87	-86.85	-1.89	40°07'45.346"N	104°52'42.793"W	0.00	
2543.00†	0.000	180.557	2536.96	86.87	-86.85	-1.89	40°07'45.346"N	104°52'42.793"W	0.00	
2643.00†	0.000	180.557	2636.96	86.87	-86.85	-1.89	40°07'45.346"N	104°52'42.793"W	0.00	
2743.00†	0.000	180.557	2736.96	86.87	-86.85	-1.89	40°07'45.346"N	104°52'42.793"W	0.00	
2843.00†	0.000	180.557	2836.96	86.87	-86.85	-1.89	40°07'45.346"N	104°52'42.793"W	0.00	
2943.00†	0.000	180.557	2936.96	86.87	-86.85	-1.89	40°07'45.346"N	104°52'42.793"W	0.00	
3043.00†	0.000	180.557	3036.96	86.87	-86.85	-1.89	40°07'45.346"N	104°52'42.793"W	0.00	
3143.00†	0.000	180.557	3136.96	86.87	-86.85	-1.89	40°07'45.346"N	104°52'42.793"W	0.00	
3243.00†	0.000	180.557	3236.96	86.87	-86.85	-1.89	40°07'45.346"N	104°52'42.793"W	0.00	
3343.00†	0.000	180.557	3336.96	86.87	-86.85	-1.89	40°07'45.346"N	104°52'42.793"W	0.00	
3443.00†	0.000	180.557	3436.96	86.87	-86.85	-1.89	40°07'45.346"N	104°52'42.793"W	0.00	
3543.00†	0.000	180.557	3536.96	86.87	-86.85	-1.89	40°07'45.346"N	104°52'42.793"W	0.00	
3643.00†	0.000	180.557	3636.96	86.87	-86.85	-1.89	40°07'45.346"N	104°52'42.793"W	0.00	
3743.00†	0.000	180.557	3736.96	86.87	-86.85	-1.89	40°07'45.346"N	104°52'42.793"W	0.00	

# Planned Wellpath Report

DEEPE 14N-27HZ (REV-A.0) PWP

Page 3 of 8

REFERENCE WELLPATH IDENTIFICATION			
Operator	KERR-MCGEE OIL & GAS ONSHORE LP	Slot	SLOT#01 DEEPE 14N-27HZ (531'FNL & 2110'FWL, SEC.22)
Area	COLORADO	Well	DEEPE 14N-27HZ
Field	WELD COUNTY (KERR MCGEE)	Wellbore	DEEPE 14N-27HZ PWB
Facility	SEC.22-T2N-R67W		

WELLPATH DATA (186 stations) † = interpolated/extrapolated station										
MD [ft]	Inclination [°]	Azimuth [°]	TVD [ft]	Vert Sect [ft]	North [ft]	East [ft]	Latitude	Longitude	DLS [°/100ft]	Comments
3843.00†	0.000	180.557	3836.96	86.87	-86.85	-1.89	40°07'45.346"N	104°52'42.793"W	0.00	
3943.00†	0.000	180.557	3936.96	86.87	-86.85	-1.89	40°07'45.346"N	104°52'42.793"W	0.00	
4043.00†	0.000	180.557	4036.96	86.87	-86.85	-1.89	40°07'45.346"N	104°52'42.793"W	0.00	
4143.00†	0.000	180.557	4136.96	86.87	-86.85	-1.89	40°07'45.346"N	104°52'42.793"W	0.00	
4243.00†	0.000	180.557	4236.96	86.87	-86.85	-1.89	40°07'45.346"N	104°52'42.793"W	0.00	
4343.00†	0.000	180.557	4336.96	86.87	-86.85	-1.89	40°07'45.346"N	104°52'42.793"W	0.00	
4443.00†	0.000	180.557	4436.96	86.87	-86.85	-1.89	40°07'45.346"N	104°52'42.793"W	0.00	
4533.04†	0.000	180.557	4527.00	86.87	-86.85	-1.89	40°07'45.346"N	104°52'42.793"W	0.00	SUSSEX
4543.00†	0.000	180.557	4536.96	86.87	-86.85	-1.89	40°07'45.346"N	104°52'42.793"W	0.00	
4643.00†	0.000	180.557	4636.96	86.87	-86.85	-1.89	40°07'45.346"N	104°52'42.793"W	0.00	
4743.00†	0.000	180.557	4736.96	86.87	-86.85	-1.89	40°07'45.346"N	104°52'42.793"W	0.00	
4843.00†	0.000	180.557	4836.96	86.87	-86.85	-1.89	40°07'45.346"N	104°52'42.793"W	0.00	
4943.00†	0.000	180.557	4936.96	86.87	-86.85	-1.89	40°07'45.346"N	104°52'42.793"W	0.00	
5043.00†	0.000	180.557	5036.96	86.87	-86.85	-1.89	40°07'45.346"N	104°52'42.793"W	0.00	
5082.04†	0.000	180.557	5076.00	86.87	-86.85	-1.89	40°07'45.346"N	104°52'42.793"W	0.00	SHANNON
5143.00†	0.000	180.557	5136.96	86.87	-86.85	-1.89	40°07'45.346"N	104°52'42.793"W	0.00	
5243.00†	0.000	180.557	5236.96	86.87	-86.85	-1.89	40°07'45.346"N	104°52'42.793"W	0.00	
5343.00†	0.000	180.557	5336.96	86.87	-86.85	-1.89	40°07'45.346"N	104°52'42.793"W	0.00	
5443.00†	0.000	180.557	5436.96	86.87	-86.85	-1.89	40°07'45.346"N	104°52'42.793"W	0.00	
5543.00†	0.000	180.557	5536.96	86.87	-86.85	-1.89	40°07'45.346"N	104°52'42.793"W	0.00	
5643.00†	0.000	180.557	5636.96	86.87	-86.85	-1.89	40°07'45.346"N	104°52'42.793"W	0.00	
5743.00†	0.000	180.557	5736.96	86.87	-86.85	-1.89	40°07'45.346"N	104°52'42.793"W	0.00	
5843.00†	0.000	180.557	5836.96	86.87	-86.85	-1.89	40°07'45.346"N	104°52'42.793"W	0.00	
5943.00†	0.000	180.557	5936.96	86.87	-86.85	-1.89	40°07'45.346"N	104°52'42.793"W	0.00	
6043.00†	0.000	180.557	6036.96	86.87	-86.85	-1.89	40°07'45.346"N	104°52'42.793"W	0.00	
6143.00†	0.000	180.557	6136.96	86.87	-86.85	-1.89	40°07'45.346"N	104°52'42.793"W	0.00	
6243.00†	0.000	180.557	6236.96	86.87	-86.85	-1.89	40°07'45.346"N	104°52'42.793"W	0.00	
6343.00†	0.000	180.557	6336.96	86.87	-86.85	-1.89	40°07'45.346"N	104°52'42.793"W	0.00	
6443.00†	0.000	180.557	6436.96	86.87	-86.85	-1.89	40°07'45.346"N	104°52'42.793"W	0.00	
6543.00†	0.000	180.557	6536.96	86.87	-86.85	-1.89	40°07'45.346"N	104°52'42.793"W	0.00	
6643.00†	0.000	180.557	6636.96	86.87	-86.85	-1.89	40°07'45.346"N	104°52'42.793"W	0.00	
6743.00†	0.000	180.557	6736.96	86.87	-86.85	-1.89	40°07'45.346"N	104°52'42.793"W	0.00	
6843.00†	0.000	180.557	6836.96	86.87	-86.85	-1.89	40°07'45.346"N	104°52'42.793"W	0.00	
6865.09	0.000	180.557	6859.05	86.87	-86.85	-1.89	40°07'45.346"N	104°52'42.793"W	0.00	KOP, BUILD @ 10°/100'
6943.00†	7.791	180.557	6936.72	92.16	-92.14	-1.94	40°07'45.293"N	104°52'42.794"W	10.00	
7043.00†	17.791	180.557	7034.11	114.27	-114.25	-2.16	40°07'45.075"N	104°52'42.797"W	10.00	
7143.00†	27.791	180.557	7126.19	152.96	-152.94	-2.53	40°07'44.693"N	104°52'42.802"W	10.00	
7243.00†	37.791	180.557	7210.14	207.05	-207.03	-3.06	40°07'44.158"N	104°52'42.808"W	10.00	
7327.69†	46.260	180.557	7273.00	263.69	-263.67	-3.61	40°07'43.598"N	104°52'42.815"W	10.00	SHARON SPRINGS
7343.00†	47.791	180.557	7283.44	274.89	-274.87	-3.72	40°07'43.488"N	104°52'42.817"W	10.00	
7443.00†	57.791	180.557	7343.83	354.44	-354.41	-4.49	40°07'42.702"N	104°52'42.827"W	10.00	
7449.00†	58.391	180.557	7347.00	359.53	-359.50	-4.54	40°07'42.651"N	104°52'42.827"W	10.00	NIOBRARA
7543.00†	67.791	180.557	7389.50	443.26	-443.23	-5.35	40°07'41.824"N	104°52'42.838"W	10.00	
7582.01†	71.692	180.557	7403.00	479.85	-479.81	-5.71	40°07'41.462"N	104°52'42.842"W	10.00	NIOBRARA B
7643.00†	77.791	180.557	7419.04	538.66	-538.62	-6.28	40°07'40.881"N	104°52'42.850"W	10.00	

# Planned Wellpath Report

DEEPE 14N-27HZ (REV-A.0) PWP

Page 4 of 8

## REFERENCE WELLPATH IDENTIFICATION

Operator	<b>KERR-MCGEE OIL &amp; GAS ONSHORE LP</b>	Slot	<b>SLOT#01 DEEPE 14N-27HZ (531'FNL &amp; 2110'FWL, SEC.22)</b>
Area	<b>COLORADO</b>	Well	<b>DEEPE 14N-27HZ</b>
Field	<b>WELD COUNTY (KERR MCGEE)</b>	Wellbore	<b>DEEPE 14N-27HZ PWB</b>
Facility	<b>SEC.22-T2N-R67W</b>		

## WELLPATH DATA (186 stations) † = interpolated/extrapolated station

MD [ft]	Inclination [°]	Azimuth [°]	TVD [ft]	Vert Sect [ft]	North [ft]	East [ft]	Latitude	Longitude	DLS [°/100ft]	Comments
7743.00†	87.791	180.557	7431.58	637.74	-637.70	-7.24	40°07'39.902"N	104°52'42.862"W	10.00	
7763.86	89.877	180.557	7432.00	658.60	-658.56	-7.44	40°07'39.696"N	104°52'42.865"W	10.00	LANDING POINT
7843.00†	89.877	180.557	7432.17	737.74	-737.69	-8.21	40°07'38.914"N	104°52'42.875"W	0.00	
7943.00†	89.877	180.557	7432.39	837.74	-837.69	-9.19	40°07'37.926"N	104°52'42.887"W	0.00	
8043.00†	89.877	180.557	7432.60	937.74	-937.68	-10.16	40°07'36.938"N	104°52'42.900"W	0.00	
8143.00†	89.877	180.557	7432.81	1037.74	-1037.68	-11.13	40°07'35.950"N	104°52'42.912"W	0.00	
8243.00†	89.877	180.557	7433.03	1137.74	-1137.67	-12.10	40°07'34.961"N	104°52'42.925"W	0.00	
8343.00†	89.877	180.557	7433.24	1237.74	-1237.67	-13.07	40°07'33.973"N	104°52'42.937"W	0.00	
8443.00†	89.877	180.557	7433.45	1337.74	-1337.66	-14.04	40°07'32.985"N	104°52'42.950"W	0.00	
8543.00†	89.877	180.557	7433.67	1437.74	-1437.66	-15.02	40°07'31.997"N	104°52'42.962"W	0.00	
8643.00†	89.877	180.557	7433.88	1537.74	-1537.65	-15.99	40°07'31.009"N	104°52'42.975"W	0.00	
8743.00†	89.877	180.557	7434.10	1637.74	-1637.65	-16.96	40°07'30.021"N	104°52'42.987"W	0.00	
8843.00†	89.877	180.557	7434.31	1737.73	-1737.64	-17.93	40°07'29.032"N	104°52'43.000"W	0.00	
8943.00†	89.877	180.557	7434.52	1837.73	-1837.64	-18.90	40°07'28.044"N	104°52'43.012"W	0.00	
9043.00†	89.877	180.557	7434.74	1937.73	-1937.63	-19.87	40°07'27.056"N	104°52'43.025"W	0.00	
9143.00†	89.877	180.557	7434.95	2037.73	-2037.63	-20.85	40°07'26.068"N	104°52'43.037"W	0.00	
9243.00†	89.877	180.557	7435.17	2137.73	-2137.62	-21.82	40°07'25.080"N	104°52'43.050"W	0.00	
9343.00†	89.877	180.557	7435.38	2237.73	-2237.62	-22.79	40°07'24.092"N	104°52'43.062"W	0.00	
9443.00†	89.877	180.557	7435.59	2337.73	-2337.61	-23.76	40°07'23.103"N	104°52'43.075"W	0.00	
9543.00†	89.877	180.557	7435.81	2437.73	-2437.61	-24.73	40°07'22.115"N	104°52'43.087"W	0.00	
9643.00†	89.877	180.557	7436.02	2537.73	-2537.60	-25.70	40°07'21.127"N	104°52'43.100"W	0.00	
9743.00†	89.877	180.557	7436.24	2637.73	-2637.60	-26.68	40°07'20.139"N	104°52'43.112"W	0.00	
9843.00†	89.877	180.557	7436.45	2737.73	-2737.59	-27.65	40°07'19.151"N	104°52'43.125"W	0.00	
9943.00†	89.877	180.557	7436.66	2837.73	-2837.59	-28.62	40°07'18.163"N	104°52'43.137"W	0.00	
10043.00†	89.877	180.557	7436.88	2937.73	-2937.58	-29.59	40°07'17.174"N	104°52'43.150"W	0.00	
10143.00†	89.877	180.557	7437.09	3037.73	-3037.58	-30.56	40°07'16.186"N	104°52'43.162"W	0.00	
10243.00†	89.877	180.557	7437.31	3137.73	-3137.57	-31.53	40°07'15.198"N	104°52'43.175"W	0.00	
10343.00†	89.877	180.557	7437.52	3237.73	-3237.57	-32.50	40°07'14.210"N	104°52'43.187"W	0.00	
10443.00†	89.877	180.557	7437.73	3337.73	-3337.56	-33.48	40°07'13.222"N	104°52'43.200"W	0.00	
10543.00†	89.877	180.557	7437.95	3437.73	-3437.56	-34.45	40°07'12.234"N	104°52'43.212"W	0.00	
10643.00†	89.877	180.557	7438.16	3537.73	-3537.55	-35.42	40°07'11.246"N	104°52'43.225"W	0.00	
10743.00†	89.877	180.557	7438.38	3637.73	-3637.55	-36.39	40°07'10.257"N	104°52'43.237"W	0.00	
10843.00†	89.877	180.557	7438.59	3737.73	-3737.54	-37.36	40°07'09.269"N	104°52'43.250"W	0.00	
10943.00†	89.877	180.557	7438.80	3837.73	-3837.54	-38.33	40°07'08.281"N	104°52'43.262"W	0.00	
11043.00†	89.877	180.557	7439.02	3937.73	-3937.53	-39.31	40°07'07.293"N	104°52'43.275"W	0.00	
11143.00†	89.877	180.557	7439.23	4037.73	-4037.53	-40.28	40°07'06.305"N	104°52'43.287"W	0.00	
11243.00†	89.877	180.557	7439.45	4137.73	-4137.52	-41.25	40°07'05.317"N	104°52'43.300"W	0.00	
11343.00†	89.877	180.557	7439.66	4237.73	-4237.52	-42.22	40°07'04.328"N	104°52'43.312"W	0.00	
11443.00†	89.877	180.557	7439.87	4337.73	-4337.51	-43.19	40°07'03.340"N	104°52'43.325"W	0.00	
11543.00†	89.877	180.557	7440.09	4437.73	-4437.51	-44.16	40°07'02.352"N	104°52'43.337"W	0.00	
11643.00†	89.877	180.557	7440.30	4537.73	-4537.50	-45.14	40°07'01.364"N	104°52'43.350"W	0.00	
11743.00†	89.877	180.557	7440.52	4637.73	-4637.50	-46.11	40°07'00.376"N	104°52'43.362"W	0.00	
11843.00†	89.877	180.557	7440.73	4737.73	-4737.49	-47.08	40°06'59.388"N	104°52'43.375"W	0.00	
11943.00†	89.877	180.557	7440.94	4837.73	-4837.49	-48.05	40°06'58.399"N	104°52'43.387"W	0.00	
12043.00†	89.877	180.557	7441.16	4937.73	-4937.48	-49.02	40°06'57.411"N	104°52'43.400"W	0.00	

# Planned Wellpath Report

DEEPE 14N-27HZ (REV-A.0) PWP

Page 5 of 8

REFERENCE WELLPATH IDENTIFICATION			
Operator	KERR-MCGEE OIL & GAS ONSHORE LP	Slot	SLOT#01 DEEPE 14N-27HZ (531'FNL & 2110'FWL, SEC.22)
Area	COLORADO	Well	DEEPE 14N-27HZ
Field	WELD COUNTY (KERR MCGEE)	Wellbore	DEEPE 14N-27HZ PWB
Facility	SEC.22-T2N-R67W		

WELLPATH DATA (186 stations) † = interpolated/extrapolated station										
MD [ft]	Inclination [°]	Azimuth [°]	TVD [ft]	Vert Sect [ft]	North [ft]	East [ft]	Latitude	Longitude	DLS [°/100ft]	Comments
12143.00†	89.877	180.557	7441.37	5037.73	-5037.48	-49.99	40°06'56.423"N	104°52'43.412"W	0.00	
12243.00†	89.877	180.557	7441.59	5137.73	-5137.47	-50.97	40°06'55.435"N	104°52'43.425"W	0.00	
12343.00†	89.877	180.557	7441.80	5237.73	-5237.47	-51.94	40°06'54.447"N	104°52'43.438"W	0.00	
12443.00†	89.877	180.557	7442.01	5337.73	-5337.46	-52.91	40°06'53.459"N	104°52'43.450"W	0.00	
12543.00†	89.877	180.557	7442.23	5437.73	-5437.46	-53.88	40°06'52.470"N	104°52'43.463"W	0.00	
12643.00†	89.877	180.557	7442.44	5537.73	-5537.45	-54.85	40°06'51.482"N	104°52'43.475"W	0.00	
12743.00†	89.877	180.557	7442.66	5637.73	-5637.45	-55.82	40°06'50.494"N	104°52'43.488"W	0.00	
12843.00†	89.877	180.557	7442.87	5737.73	-5737.44	-56.80	40°06'49.506"N	104°52'43.500"W	0.00	
12943.00†	89.877	180.557	7443.08	5837.73	-5837.44	-57.77	40°06'48.518"N	104°52'43.513"W	0.00	
13043.00†	89.877	180.557	7443.30	5937.73	-5937.43	-58.74	40°06'47.530"N	104°52'43.525"W	0.00	
13143.00†	89.877	180.557	7443.51	6037.73	-6037.43	-59.71	40°06'46.541"N	104°52'43.538"W	0.00	
13243.00†	89.877	180.557	7443.73	6137.72	-6137.42	-60.68	40°06'45.553"N	104°52'43.550"W	0.00	
13343.00†	89.877	180.557	7443.94	6237.72	-6237.42	-61.65	40°06'44.565"N	104°52'43.563"W	0.00	
13443.00†	89.877	180.557	7444.15	6337.72	-6337.42	-62.63	40°06'43.577"N	104°52'43.575"W	0.00	
13543.00†	89.877	180.557	7444.37	6437.72	-6437.41	-63.60	40°06'42.589"N	104°52'43.588"W	0.00	
13643.00†	89.877	180.557	7444.58	6537.72	-6537.41	-64.57	40°06'41.601"N	104°52'43.600"W	0.00	
13743.00†	89.877	180.557	7444.80	6637.72	-6637.40	-65.54	40°06'40.612"N	104°52'43.613"W	0.00	
13843.00†	89.877	180.557	7445.01	6737.72	-6737.40	-66.51	40°06'39.624"N	104°52'43.625"W	0.00	
13943.00†	89.877	180.557	7445.22	6837.72	-6837.39	-67.48	40°06'38.636"N	104°52'43.638"W	0.00	
14043.00†	89.877	180.557	7445.44	6937.72	-6937.39	-68.46	40°06'37.648"N	104°52'43.650"W	0.00	
14143.00†	89.877	180.557	7445.65	7037.72	-7037.38	-69.43	40°06'36.660"N	104°52'43.663"W	0.00	
14243.00†	89.877	180.557	7445.86	7137.72	-7137.38	-70.40	40°06'35.672"N	104°52'43.675"W	0.00	
14343.00†	89.877	180.557	7446.08	7237.72	-7237.37	-71.37	40°06'34.683"N	104°52'43.688"W	0.00	
14443.00†	89.877	180.557	7446.29	7337.72	-7337.37	-72.34	40°06'33.695"N	104°52'43.700"W	0.00	
14543.00†	89.877	180.557	7446.51	7437.72	-7437.36	-73.31	40°06'32.707"N	104°52'43.713"W	0.00	
14643.00†	89.877	180.557	7446.72	7537.72	-7537.36	-74.29	40°06'31.719"N	104°52'43.725"W	0.00	
14743.00†	89.877	180.557	7446.93	7637.72	-7637.35	-75.26	40°06'30.731"N	104°52'43.738"W	0.00	
14843.00†	89.877	180.557	7447.15	7737.72	-7737.35	-76.23	40°06'29.743"N	104°52'43.750"W	0.00	
14943.00†	89.877	180.557	7447.36	7837.72	-7837.34	-77.20	40°06'28.754"N	104°52'43.763"W	0.00	
15043.00†	89.877	180.557	7447.58	7937.72	-7937.34	-78.17	40°06'27.766"N	104°52'43.775"W	0.00	
15143.00†	89.877	180.557	7447.79	8037.72	-8037.33	-79.14	40°06'26.778"N	104°52'43.788"W	0.00	
15243.00†	89.877	180.557	7448.00	8137.72	-8137.33	-80.12	40°06'25.790"N	104°52'43.800"W	0.00	
15343.00†	89.877	180.557	7448.22	8237.72	-8237.32	-81.09	40°06'24.802"N	104°52'43.813"W	0.00	
15443.00†	89.877	180.557	7448.43	8337.72	-8337.32	-82.06	40°06'23.814"N	104°52'43.825"W	0.00	
15543.00†	89.877	180.557	7448.65	8437.72	-8437.31	-83.03	40°06'22.826"N	104°52'43.838"W	0.00	
15643.00†	89.877	180.557	7448.86	8537.72	-8537.31	-84.00	40°06'21.837"N	104°52'43.850"W	0.00	
15743.00†	89.877	180.557	7449.07	8637.72	-8637.30	-84.97	40°06'20.849"N	104°52'43.863"W	0.00	
15843.00†	89.877	180.557	7449.29	8737.72	-8737.30	-85.95	40°06'19.861"N	104°52'43.875"W	0.00	
15943.00†	89.877	180.557	7449.50	8837.72	-8837.29	-86.92	40°06'18.873"N	104°52'43.888"W	0.00	
16043.00†	89.877	180.557	7449.72	8937.72	-8937.29	-87.89	40°06'17.885"N	104°52'43.900"W	0.00	
16143.00†	89.877	180.557	7449.93	9037.72	-9037.28	-88.86	40°06'16.897"N	104°52'43.913"W	0.00	
16243.00†	89.877	180.557	7450.14	9137.72	-9137.28	-89.83	40°06'15.908"N	104°52'43.925"W	0.00	
16343.00†	89.877	180.557	7450.36	9237.72	-9237.27	-90.80	40°06'14.920"N	104°52'43.938"W	0.00	
16443.00†	89.877	180.557	7450.57	9337.72	-9337.27	-91.78	40°06'13.932"N	104°52'43.950"W	0.00	
16543.00†	89.877	180.557	7450.79	9437.72	-9437.26	-92.75	40°06'12.944"N	104°52'43.963"W	0.00	

# Planned Wellpath Report

DEEPE 14N-27HZ (REV-A.0) PWP

Page 6 of 8

## REFERENCE WELLPATH IDENTIFICATION

Operator	KERR-MCGEE OIL & GAS ONSHORE LP	Slot	SLOT#01 DEEPE 14N-27HZ (531'FNL & 2110'FWL, SEC.22)
Area	COLORADO	Well	DEEPE 14N-27HZ
Field	WELD COUNTY (KERR MCGEE)	Wellbore	DEEPE 14N-27HZ PWB
Facility	SEC.22-T2N-R67W		

## WELLPATH DATA (186 stations) † = interpolated/extrapolated station

MD [ft]	Inclination [°]	Azimuth [°]	TVD [ft]	Vert Sect [ft]	North [ft]	East [ft]	Latitude	Longitude	DLS [°/100ft]	Comments
16643.00†	89.877	180.557	7451.00	9537.72	-9537.26	-93.72	40°06'11.956"N	104°52'43.975"W	0.00	
16743.00†	89.877	180.557	7451.21	9637.72	-9637.25	-94.69	40°06'10.968"N	104°52'43.988"W	0.00	
16843.00†	89.877	180.557	7451.43	9737.72	-9737.25	-95.66	40°06'09.979"N	104°52'44.000"W	0.00	
16943.00†	89.877	180.557	7451.64	9837.72	-9837.24	-96.63	40°06'08.991"N	104°52'44.013"W	0.00	
17043.00†	89.877	180.557	7451.86	9937.72	-9937.24	-97.61	40°06'08.003"N	104°52'44.025"W	0.00	
17110.40	89.877	180.557	7452.00 <sup>1</sup>	10005.12	-10004.63	-98.26	40°06'07.337"N	104°52'44.033"W	0.00	TOTAL DEPTH

## HOLE & CASING SECTIONS - Ref Wellbore: DEEPE 14N-27HZ PWB Ref Wellpath: DEEPE 14N-27HZ (REV-A.0) PWP

String/Diameter	Start MD [ft]	End MD [ft]	Interval [ft]	Start TVD [ft]	End TVD [ft]	Start N/S [ft]	Start E/W [ft]	End N/S [ft]	End E/W [ft]
13.5in Open Hole	25.00	729.00	704.00	25.00	728.95	0.00	0.00	1.63	4.42
9.625in Casing Surface	25.00	718.00	693.00	25.00	717.95	0.00	0.00	1.45	4.43
8.75in Open Hole	729.00	7763.86	7034.86	728.95	7432.00	1.63	4.42	-658.56	-7.44
7in Casing Intermediate	25.00	7763.86	7738.86	25.00	7432.00	0.00	0.00	-658.56	-7.44
6.125in Open Hole	7763.86	17110.40	9346.54	7432.00	7452.00	-658.56	-7.44	-10004.63	-98.26
4.5in Casing Production	25.00	17110.40	17085.40	25.00	7452.00	0.00	0.00	-10004.63	-98.26

# Planned Wellpath Report

DEEPE 14N-27HZ (REV-A.0) PWP

Page 7 of 8

## REFERENCE WELLPATH IDENTIFICATION

Operator	KERR-MCGEE OIL & GAS ONSHORE LP	Slot	SLOT#01 DEEPE 14N-27HZ (531'FNL & 2110'FWL, SEC.22)
Area	COLORADO	Well	DEEPE 14N-27HZ
Field	WELD COUNTY (KERR MCGEE)	Wellbore	DEEPE 14N-27HZ PWB
Facility	SEC.22-T2N-R67W		

## TARGETS

Name	MD [ft]	TVD [ft]	North [ft]	East [ft]	Grid East [US ft]	Grid North [US ft]	Latitude	Longitude	Shape
SEC.22-T2N-R67W SECTION LINES		0.00	-108.25	-1240.49	3172530.63	1290513.02	40°07'45.134"N	104°52'58.739"W	polygon
SEC.27-T2N-R67W SECTION LINES		0.00	-108.25	-1240.49	3172530.63	1290513.02	40°07'45.134"N	104°52'58.739"W	polygon
DEEPE 14N-27HZ BHL ON PLAT REV-1 (1'FSL & 1860'FWL, SEC.27)		7452.00	-10004.63	-338.26	3173502.15	1280623.62	40°06'07.337"N	104°52'47.122"W	point
1) DEEPE 14N-27HZ BHL REV-2 (1'FSL & 2100'FWL, SEC.27)	17110.40	7452.00	-10004.63	-98.26	3173742.13	1280625.30	40°06'07.337"N	104°52'44.033"W	point
DEEPE 14N-27HZ LANDBOX		7452.00	0.00	0.00	3173770.27	1290629.95	40°07'46.204"N	104°52'42.769"W	polygon
SEC.22-T2N-R67W HARDLINES (460' SETBACKS)		7700.00	-108.25	-1240.49	3172530.63	1290513.02	40°07'45.134"N	104°52'58.739"W	polygon
SEC.27-T2N-R67W HARDLINES (460' SETBACKS)		7700.00	-108.25	-1240.49	3172530.63	1290513.02	40°07'45.134"N	104°52'58.739"W	polygon

## SURVEY PROGRAM - Ref Wellbore: DEEPE 14N-27HZ PWB Ref Wellpath: DEEPE 14N-27HZ (REV-A.0) PWP

Start MD [ft]	End MD [ft]	Positional Uncertainty Model	Log Name/Comment	Wellbore
25.00	643.00	Generic gyro - continuous (Standard)		DEEPE 14N-27HZ AWB
643.00	7763.86	NaviTrak (MAGCORR,IFR)		DEEPE 14N-27HZ PWB
7763.86	17110.40	NaviTrak (MAGCORR,IFR)		DEEPE 14N-27HZ PWB

# Planned Wellpath Report

DEEPE 14N-27HZ (REV-A.0) PWP

Page 8 of 8

## REFERENCE WELLPATH IDENTIFICATION

Operator	KERR-MCGEE OIL & GAS ONSHORE LP	Slot	SLOT#01 DEEPE 14N-27HZ (531'FNL & 2110'FWL, SEC.22)
Area	COLORADO	Well	DEEPE 14N-27HZ
Field	WELD COUNTY (KERR MCGEE)	Wellbore	DEEPE 14N-27HZ PWB
Facility	SEC.22-T2N-R67W		

## WELLPATH COMMENTS

MD [ft]	Inclination [°]	Azimuth [°]	TVD [ft]	Comment
25.00	0.000	143.430	25.00	TIE ON
125.00	0.700	143.430	125.00	BEGIN GYRO SURVEYS
458.02	0.684	66.760	458.00	FOX HILLS BASE
643.00	0.950	355.240	642.96	TIE ONTO GYRO SURVEYS
4533.04	0.000	180.557	4527.00	SUSSEX
5082.04	0.000	180.557	5076.00	SHANNON
7327.69	46.260	180.557	7273.00	SHARON SPRINGS
7449.00	58.391	180.557	7347.00	NIOBRARA
7582.01	71.692	180.557	7403.00	NIOBRARA B

## DESIGN COMMENTS

MD [ft]	Inclination [°]	Azimuth [°]	TVD [ft]	Comment
643.00	0.950	355.240	642.96	TIE ON
1200.12	0.950	355.240	1200.00	BEGIN NUDGE
1747.22	10.000	183.000	1744.56	END NUDGE
1803.51	10.000	183.000	1800.00	BEGIN DROP
2303.51	0.000	180.557	2297.47	END DROP
6865.09	0.000	180.557	6859.05	KOP, BUILD @ 10°/100'
7763.86	89.877	180.557	7432.00	LANDING POINT
17110.40	89.877	180.557	7452.00	TOTAL DEPTH