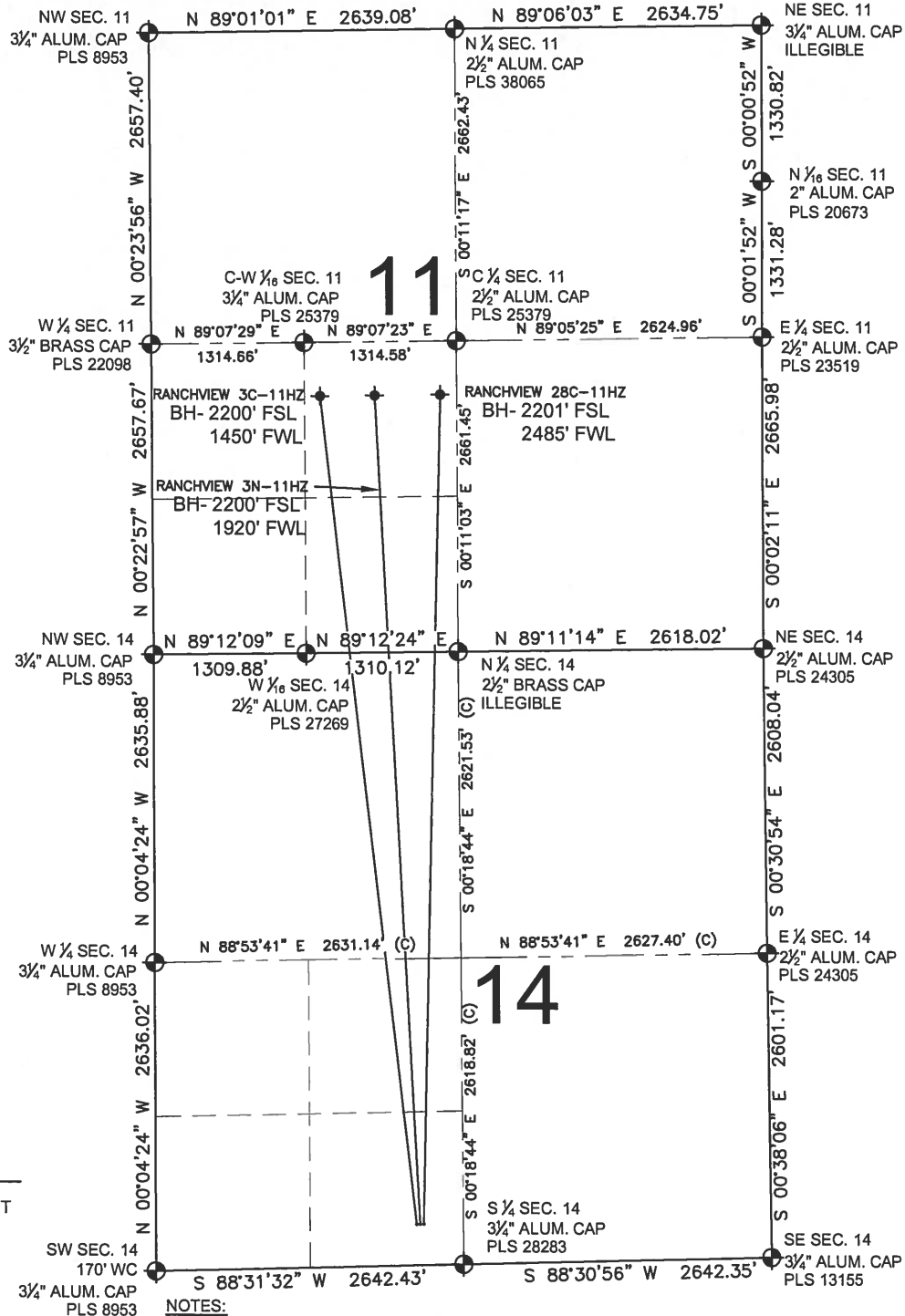


# RANCHVIEW 3N-11HZ MULTI-WELL PLAN

SECTION 14, TOWNSHIP 1 NORTH, RANGE 68 WEST, 6TH P.M.



PREPARED BY:

**PFS** llc  
 Petroleum Field Services, LLC  
 7535 Hilltop Circle  
 Denver, CO 80221

KERR-MCGEE OIL & GAS ONSHORE LP

FIELD DATE:  
01-22-14

DRAWING DATE:  
03-14-14

SURFACE LOCATION:

SE 1/4, SW 1/4, SEC. 14, T1N, R68W, 6TH P.M.  
 WELD COUNTY, COLORADO

