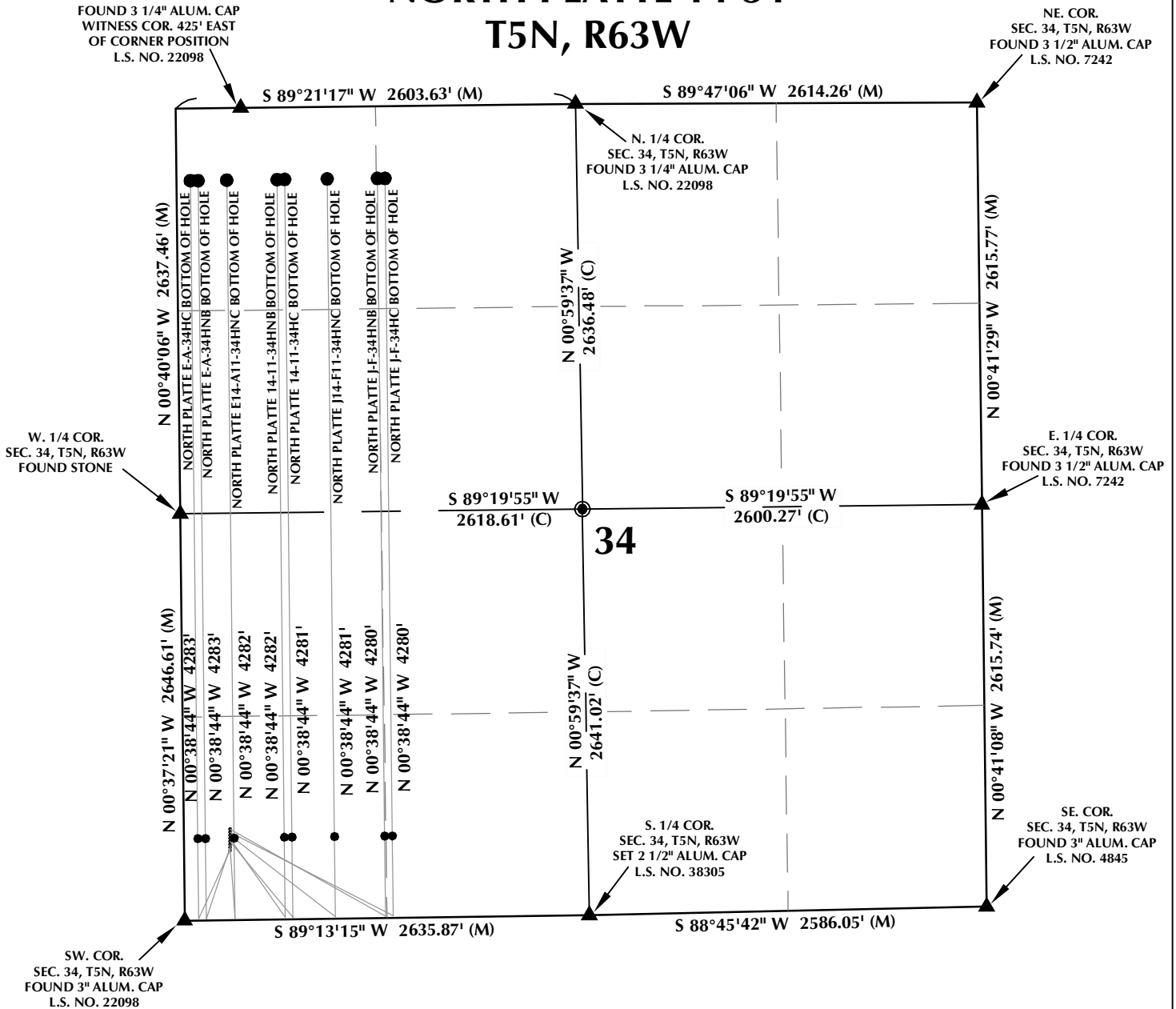


NORTH PLATTE 14-34 T5N, R63W



WELL NOTES:

NORTH PLATTE J-F-34HNB
SURFACE: 590' FSL, 300' FWL
LAT: 40.350337°
LON: -104.430329°

NORTH PLATTE J-F-34HNC
SURFACE: 570' FSL, 300' FWL
LAT: 40.350282°
LON: -104.430329°

NORTH PLATTE J14-F11-34HNC
SURFACE: 550' FSL, 300' FWL
LAT: 40.350227°
LON: -104.430330°

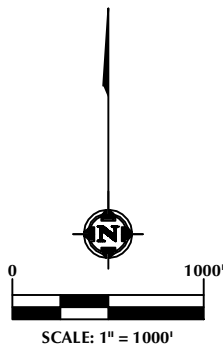
NORTH PLATTE 14-11-34HNB
SURFACE: 530' FSL, 300' FWL
LAT: 40.350172°
LON: -104.430330°

NORTH PLATTE 14-11-34HC
SURFACE: 510' FSL, 300' FWL
LAT: 40.350117°
LON: -104.430331°

NORTH PLATTE E14-A11-34HNC
SURFACE: 490' FSL, 300' FWL
LAT: 40.350063°
LON: -104.430331°

NORTH PLATTE E-A-34HNB
SURFACE: 470' FSL, 300' FWL
LAT: 40.350008°
LON: -104.430331°

NORTH PLATTE E-A-34HC
SURFACE: 450' FSL, 299' FWL
LAT: 40.349953°
LON: -104.430332°



NOTES:

- ▲ INDICATES FOUND SECTION CORNER
- INDICATES CALCULATED CORNER
- BASIS OF BEARING DERIVED FROM COLORADO COORDINATE SYSTEM 1983 NORTH ZONE UNLESS OTHERWISE NOTED.
- ALL MEASURED DISTANCES ARE GRID. COMBINED SCALE FACTOR: .99974518
- WELL FOOTAGES ARE MEASURED AT RIGHT ANGLES TO THE SECTION LINES.

WELL PAD - NORTH PLATTE 14-34

MULTI-WELL PLAN
NORTH PLATTE J-F-34HNB, NORTH PLATTE J-F-34HC,
NORTH PLATTE J14-F11-34HNC, NORTH PLATTE 14-11-34HNB,
NORTH PLATTE 14-11-34HC, NORTH PLATTE E14-A11-34HNC,
NORTH PLATTE E-A-34HNB & NORTH PLATTE E-A-34HC
LOCATED IN SECTION 34
T5N, R63W, 6TH P.M.
WELD COUNTY, COLORADO

BONANZA CREEK
410 17th Street, Suite 1400
Denver, Colorado 80202



CONSULTING, LLC

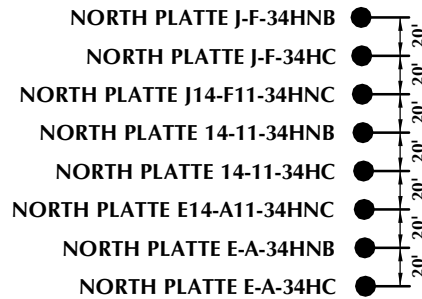
SHERIDAN OFFICE
2155 North Main Street
Sheridan, Wyoming 82801
Phone 307-674-0609

LOVELAND OFFICE
1635 Foxtrail Drive, Suite 204
Loveland, Colorado 80538
Phone 970-776-4331

DRAFTED BY:	LMO	CHECKED BY:	BJR	SHEET NO:
DATE DRAFTED:	11/26/13	DATE SURVEYED:	10/28/13	1
REVISED:	4/17/14	FILE NAME:	13-94	1 OF 2

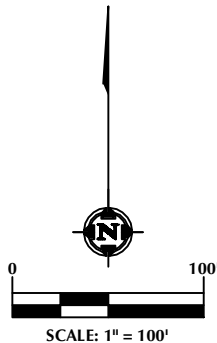
NORTH PLATTE 14-34 T5N, R63W

WEST LINE, SECTION 34



WELL NOTES:
 NORTH PLATTE J-F-34HNB
 SURFACE: 590' FSL, 300' FWL
 LAT: 40.350337°
 LON: -104.430329°
 NORTH PLATTE J-F-34HC
 SURFACE: 570' FSL, 300' FWL
 LAT: 40.350282°
 LON: -104.430329°
 NORTH PLATTE J14-F11-34HNC
 SURFACE: 550' FSL, 300' FWL
 LAT: 40.350227°
 LON: -104.430330°
 NORTH PLATTE 14-11-34HNB
 SURFACE: 530' FSL, 300' FWL
 LAT: 40.350172°
 LON: -104.430330°

NORTH PLATTE 14-11-34HC
 SURFACE: 510' FSL, 300' FWL
 LAT: 40.350117°
 LON: -104.430331°
 NORTH PLATTE E14-A11-34HNC
 SURFACE: 490' FSL, 300' FWL
 LAT: 40.350063°
 LON: -104.430331°
 NORTH PLATTE E-A-34HNB
 SURFACE: 470' FSL, 300' FWL
 LAT: 40.350008°
 LON: -104.430331°
 NORTH PLATTE E-A-34HC
 SURFACE: 450' FSL, 299' FWL
 LAT: 40.349953°
 LON: -104.430332°



NOTES:

- ▲ INDICATES FOUND SECTION CORNER
- INDICATES CALCULATED CORNER
- BASIS OF BEARING DERIVED FROM COLORADO COORDINATE SYSTEM 1983 NORTH ZONE UNLESS OTHERWISE NOTED.
- ALL MEASURED DISTANCES ARE GRID.
COMBINED SCALE FACTOR: .99974518
- WELL FOOTAGES ARE MEASURED AT RIGHT ANGLES TO THE SECTION LINES.

WELL PAD - NORTH PLATTE 14-34

MULTI-WELL PLAN
 NORTH PLATTE J-F-34HNB, NORTH PLATTE J-F-34HC,
 NORTH PLATTE J14-F11-34HNC, NORTH PLATTE 14-11-34HNB,
 NORTH PLATTE 14-11-34HC, NORTH PLATTE E14-A11-34HNC,
 NORTH PLATTE E-A-34HNB & NORTH PLATTE E-A-34HC
 LOCATED IN SECTION 34
 T5N, R63W, 6TH P.M.
 WELD COUNTY, COLORADO

BONANZA CREEK
 410 17th Street, Suite 1400
 Denver, Colorado 80202



CONSULTING, LLC

SHERIDAN OFFICE
 2155 North Main Street
 Sheridan, Wyoming 82801
 Phone 307-674-0609

LOVELAND OFFICE
 1635 Foxtrail Drive, Suite 204
 Loveland, Colorado 80538
 Phone 970-776-4331

DRAFTED BY:	LMO	CHECKED BY:	BJR	SHEET NO:
DATE DRAFTED:	11/26/13	DATE SURVEYED:	10/28/13	2
REVISED:	4/17/14	FILE NAME:	13-94	2 OF 2