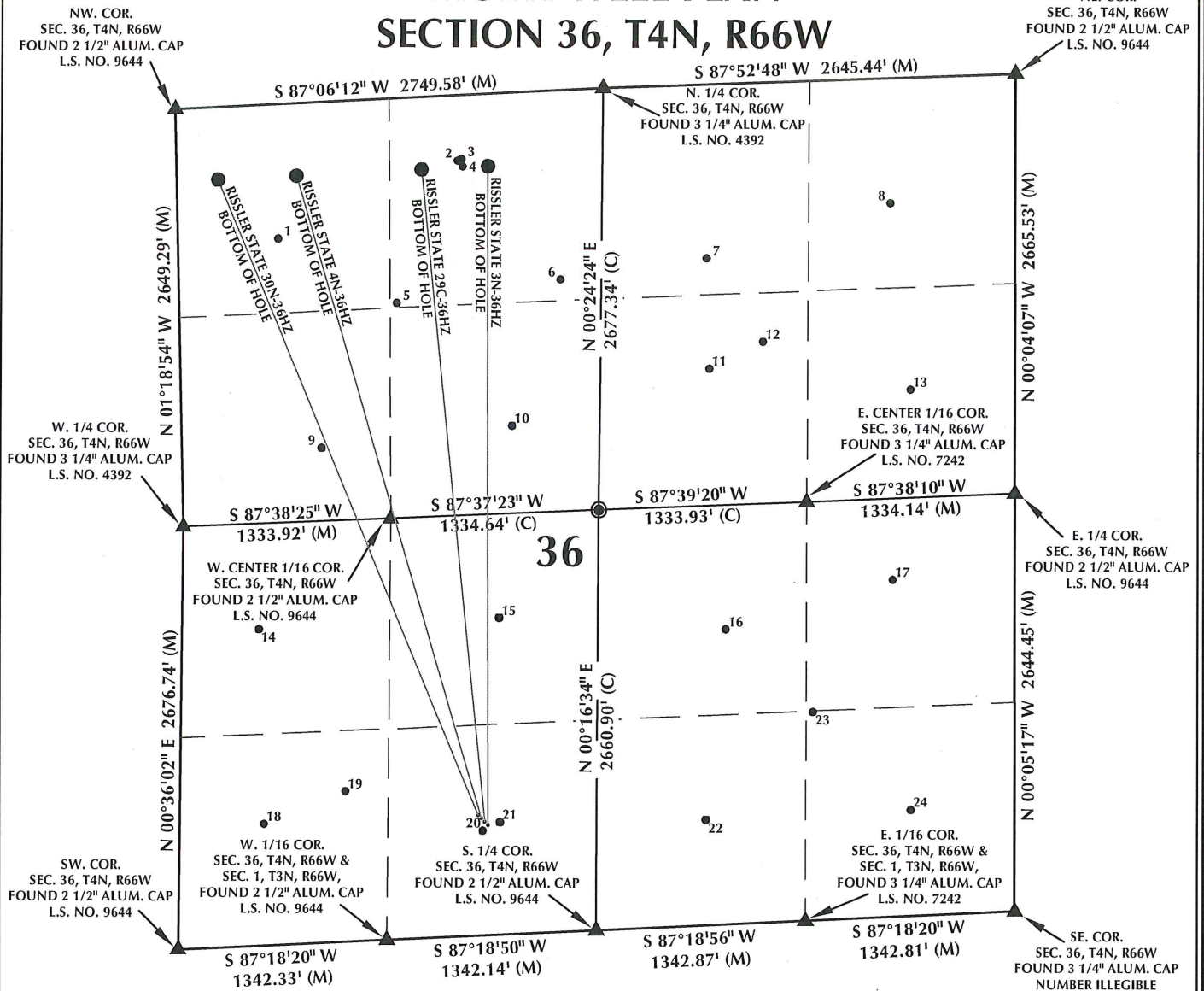


MULTI-WELL PLAN SECTION 36, T4N, R66W

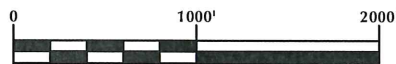


WELL NOTES:

RISSLER STATE 30N-36HZ
 SURFACE: 761' FSL, 1917' FWL
 BOTTOM HOLE: 460' FNL, 265' FWL
 RISSLER STATE 4N-36HZ
 SURFACE: 739' FSL, 1938' FWL
 BOTTOM HOLE: 460' FNL, 768' FWL
 RISSLER STATE 29C-36HZ
 SURFACE: 717' FSL, 1960' FWL
 BOTTOM HOLE: 460' FNL, 1575' FWL
 RISSLER STATE 3N-36HZ
 SURFACE: 695' FSL, 1981' FWL
 BOTTOM HOLE: 460' FNL, 2001' FWL

NOTES:

1. ▲ INDICATES FOUND SECTION CORNER
2. ● INDICATES CALCULATED CORNER
3. BASIS OF BEARING DERIVED FROM COLORADO COORDINATE SYSTEM 1983 NORTH ZONE UNLESS OTHERWISE NOTED.
4. ALL MEASURED DISTANCES ARE GRID.
5. COMBINED SCALE FACTOR: .99972797
6. WELL FOOTAGES ARE MEASURED AT RIGHT ANGLES TO THE SECTION LINES.



SCALE: 1" = 1000'

WELL PAD - RISSLER STATE 4N-36HZ

MULTI-WELL PLAN
 RISSLER STATE 30N-36HZ,
 RISSLER STATE 4N-36HZ,
 RISSLER STATE 29C-36HZ &
 RISSLER STATE 3N-36HZ
 LOCATED IN SECTION 36
 T4N, R66W, 6TH P.M.
 WELD COUNTY, COLORADO

**Kerr-McGee Oil &
 Gas Onshore L.P.**

1099 18th Street
 Denver, Colorado 80202



CONSULTING, LLC

SHERIDAN OFFICE
 2155 North Main Street
 Sheridan, Wyoming 82801
 Phone 307-674-0609

LOVELAND OFFICE
 1635 Foxtrail Drive, Suite 204
 Loveland, Colorado 80538
 Phone 970-776-4331

DRAFTED BY:	LMO	CHECKED BY:	BJR	SHEET NO:
DATE DRAFTED:	2/14/14	DATE SURVEYED:	1/22/14	1
REVISED:	5/16/14	FILE NAME:	14-10	1 OF 2

MULTI-WELL PLAN

SECTION 36, T4N, R66W

NUMBER	WELL NAME	NAD 83	
		LATITUDE	LONGITUDE
1	STATE 36-4F	40.273424°	-104.732489°
2	BERIG STATE K 36-29	40.274765°	-104.728334°
3	BERIG STATE K 36-28	40.274789°	-104.728252°
4	STATE 36-3F	40.274662°	-104.728222°
5	BERIG STATE K 36-19	40.272289°	-104.729752°
6	BERIG STATE K 36-18	40.272680°	-104.725998°
7	HSR-CORVI 2-36	40.273030°	-104.722636°
8	HSR-ACKER 1-36	40.273972°	-104.718403°
9	STATE 36-5F	40.269776°	-104.731509°
10	STATE 36-6F	40.270137°	-104.727121°
11	*STATE Z B 1	40.271106°	-104.722587°
12	*STATE OF COLORADO "Z" 1	40.271572°	-104.721350°
13	HSR-YOUNG 8-36	40.270724°	-104.717967°
14	HSR-HARMON 12-36	40.266630°	-104.732977°
15	HSR-CONLEY 11-36A	40.266801°	-104.727445°
16	HSR-HEARST 10-36	40.266574°	-104.722245°
17	HSR-CARROLL 9-36	40.267412°	-104.718398°
18	HSR-DAYLEY 13-36	40.263248°	-104.732891°
19	HSR-RAPP 13-36	40.263806°	-104.731007°
20	STEPHENS STATE 35-36	40.263101°	-104.727855°
21	*HSR-SAWDY 14-36	40.263246°	-104.727459°
22	HSR-EBAUGH 15-36	40.263265°	-104.722732°
23	SLAVIN STATE 20-36	40.265126°	-104.720255°
24	HSR-SALINSKY 16-36	40.263410°	-104.718028°

NOTES:

- * INDICATES EXISTING WELLS THAT WERE NOT SURVEYED BUT DERIVED FROM COLORADO OIL AND GAS CONSERVATION COMMISSION (COGCC).

EXISTING WELL EXHIBIT
SECTION 36, T4N, R66W, 6TH P.M.
WELD COUNTY, COLORADO

**Kerr-McGee Oil &
Gas Onshore L.P.**
1099 18th Street
Denver, Colorado 80202



CONSULTING, LLC

SHERIDAN OFFICE
2155 North Main Street
Sheridan, Wyoming 82801
Phone 307-674-0609

LOVELAND OFFICE
1635 Foxtrail Drive, Suite 204
Loveland, Colorado 80538
Phone 970-776-4331

DRAFTED BY:	LMO	CHECKED BY:	BJR	SHEET NO:
DATE DRAFTED:	11/8/13	DATE SURVEYED:	10/23/13	2
REVISED:		FILE NAME:	14-10	2 OF 2