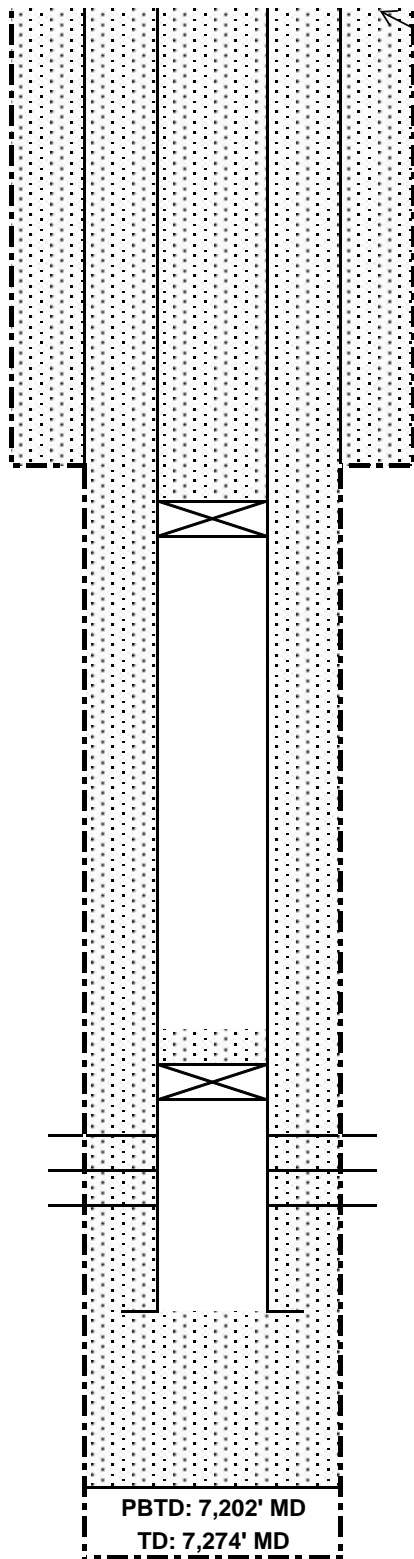


PROPOSED WELLBORE DIAGRAM



TOC @ Surface

Surf CSG: 9.625" 36# J-55 @ 1452' MD

CIBP Set @ 1,502'

188 sxs Class G Neet cement to surface inside 5.5" casing
(10% excess)

TOC @ Surface'

2 sxs Class G Neat Cement on top of CIBP

CIBP Set @ 4,935'

Perf Interval: 4,985'-7,109'

Prod CSG: 5.5" 17# N-80 @ 7,274' MD

PBTD: 7,202' MD

TD: 7,274' MD

Well Information:

Well: Huggard 2-12 (RBB2)
PBTD: 7,202' MD
TD: 7,274' MD
Surf CSG: 9.625" 36# J-55 @ 1452' MD
Prod CSG: 5.5" 17# N-80 @ 7,274' MD
Tubing: 2 3/8" Landed @ 6,872'
F-Nipple: 6,872'
Perf Interval: 4,985'-7,109'