

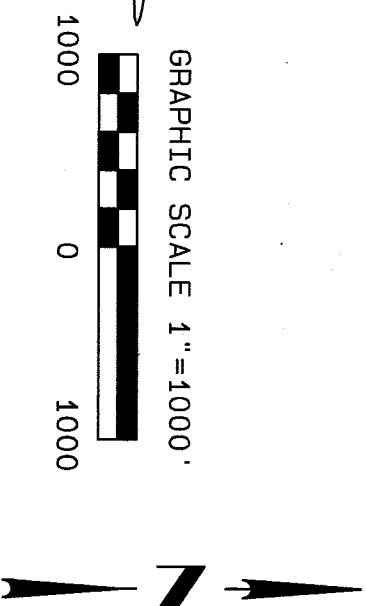


**EE3 LLC**

## BASIS OF BEARINGS

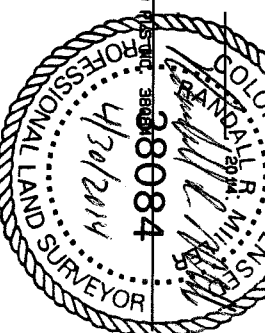
## BASIS OF ELEVATION

Note: The proposed Surface Location for this well is located in the NW1/4NE1/4 of Section 21, T7N, R80W 6th P.M. It bears S16°24'16"W 5194.93' from the Bottom Hole shown on this sheet.



**DATED THIS \_\_\_\_\_ DAY OF \_\_\_\_\_**

RANDALL R. MILLER, COLORADO PLSTNG. 38084



NORTH PARK ENGINEERING & CONSULTING, INC.

P.O. BOX 395  
WALDEN, CO 80480  
(970) 723-3725

DATE OF FIELD WORK: APRIL 8, 2014	DRAWING COMPLETION: APRIL 18, 2014
SURVEYED BY: TAT	DRAWN BY: TAT
	CHECKED BY: HRM

**SHEET 1 OF 1**

**JOB NO.: 13-029**

## LEGEND

90° SYMBOL	FOUND CORNER	PROPOSED WELL	PROPOSED BHL/LPL
			

RAY RANCH #7-21H		0.5' Above Ground Elev. = 8223'	
Surface Location Elev. Ungraded Ground=8236'		NAD 83 (SURFACE LOCATION)	
LATITUDE=40.583400 °N LONGITUDE=106.371038 °W		LATITUDE=40.569682 °N LONGITUDE=106.376143 °W	
NAD 83 (TARGET BOTTOM HOLE)		NAD 83 (LANDING POINT LOCATION)	
LATITUDE=40.583400 °N LONGITUDE=106.371038 °W		LATITUDE=40.571891 °N LONGITUDE=106.375322 °W	
		PDOP = 1.598	