

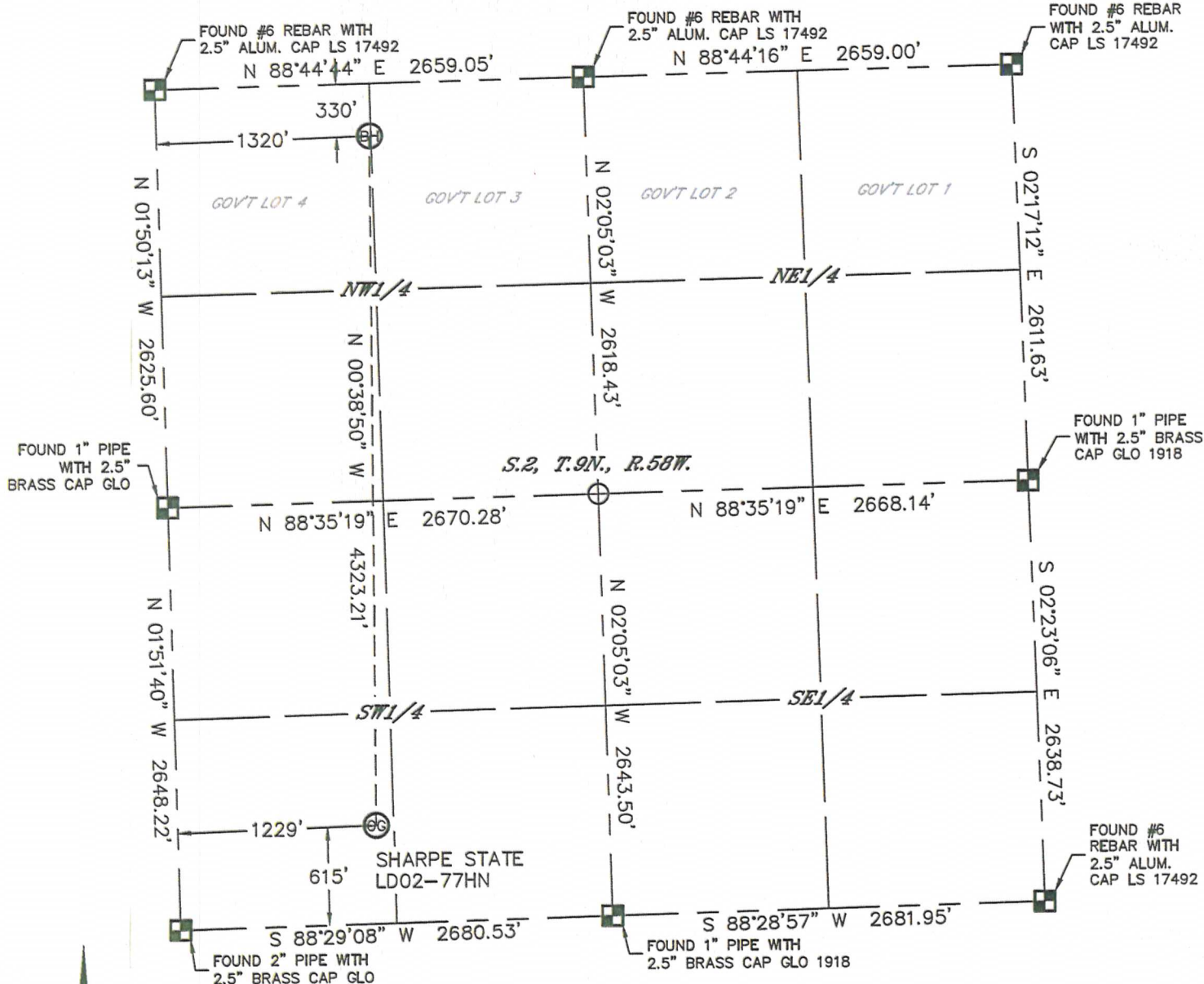


Lat40°, Inc. 1635 Foxtrail Drive, Suite 325 Loveland, CO 970-776-3321

WELL LOCATION CERTIFICATE

THIS MAP DOES NOT REPRESENT A BOUNDARY SURVEY

SECTION: 2
TOWNSHIP: 9N
RANGE: 58W



In accordance with a request from Cody Ball with Noble Energy Inc. Lat40°, Inc. has determined the surface location of the SHARPE STATE LD02-77HN to be 615' from the SOUTH line and 1229' from the WEST line and the bottom hole to be 330' from the NORTH line and 1320' from the WEST line as measured at right angles from the section lines of Section 2, Township 9 North, Range 58 West of the Sixth Principal Meridian, County of Weld, State of Colorado.

I hereby state that this Well Location Certificate was prepared by me, or under my direct supervision, that the fieldwork was completed on 11/13/2013, for and on behalf of Noble Energy Inc. That this is not a Land Survey Plat or an Improvement Survey Plat, and that it is not to be relied upon for establishment of fence, building, or other future improvement lines.

NOTE:

- 1) Bearings shown are Grid Bearings of the Colorado State Plane Coordinate System, North Zone, North American Datum 1983/2007. The lined dimensions as contained herein are based upon the "U.S. Survey Foot."
 - 2) Ground elevations are based on an observed GPS elevation (NAVD 1988 DATUM).
 - 3) IMPROVEMENTS: See LOCATION DRAWING for all visible improvements within 500' of disturbed area.
 - 4) SURFACE USE: RANGELAND
 - 5) INSTRUMENT OPERATOR: BRIAN ROTTINGHAUS
 - 6) NEAREST EXISTING WELL: NO EX. WELLS IN SECTION
- NEAREST CULTURAL ITEMS:
BUILDING: 1948' SE
BUILDING UNIT: 2934' SW
HIGH OCCUPANCY BUILDING UNIT: 5280'+
DESIGNATED OUTSIDE ACTIVITY AREA: 5280'+
PUBLIC ROAD: 5280'+
ABOVEGROUND UTILITY: 2439' SW
RAILROAD: 5280'+
PROPERTY LINE: 615' S

SURFACE LOCATION

LAT: 40.77497N
LONG: 103.83657W
PDOP: 2.3
ELEV: 4747'
1/4, 1/4: SW1/4SW1/4

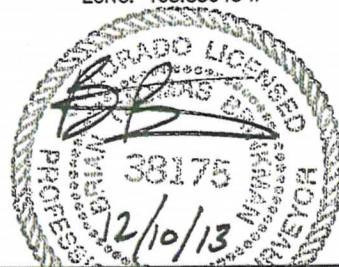
BOTTOM HOLE

LAT: 40.78683N
LONG: 103.83645W

LEGEND

- = ALIQUOT MONUMENT AS DESCRIBED
- = CALCULATED POSITION

Brian T. Brinkman On behalf of Lat40°, Inc.
Colorado Licensed Professional Land Surveyor No. 38175
DATE: 12/10/2013
PROJECT#: 2013115

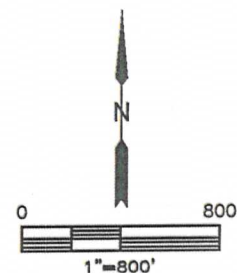
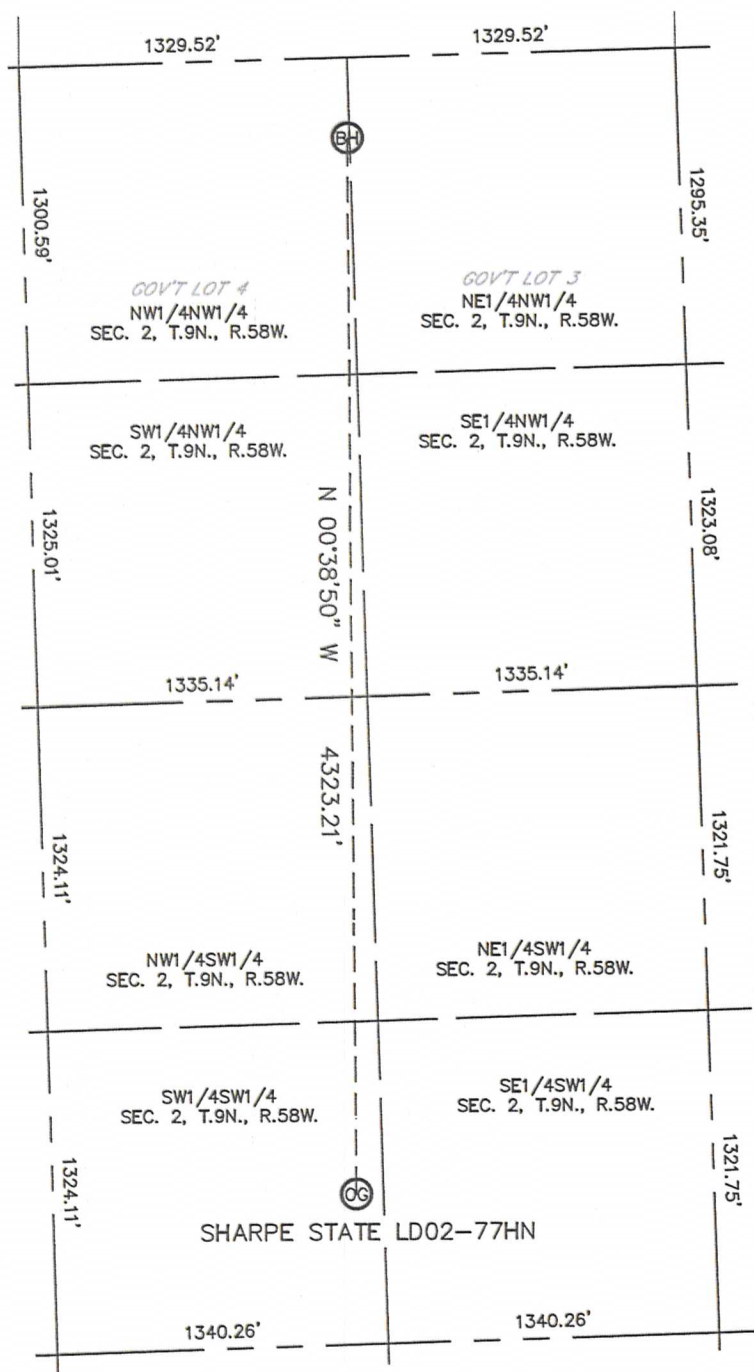




SITE SKETCH

SHARPE STATE LD02-77HN

SECTION: 2
TOWNSHIP: 9N
RANGE: 58W



NOTE: NO EXISTING WELLS ADJACENT TO PROPOSED WELL BORE.