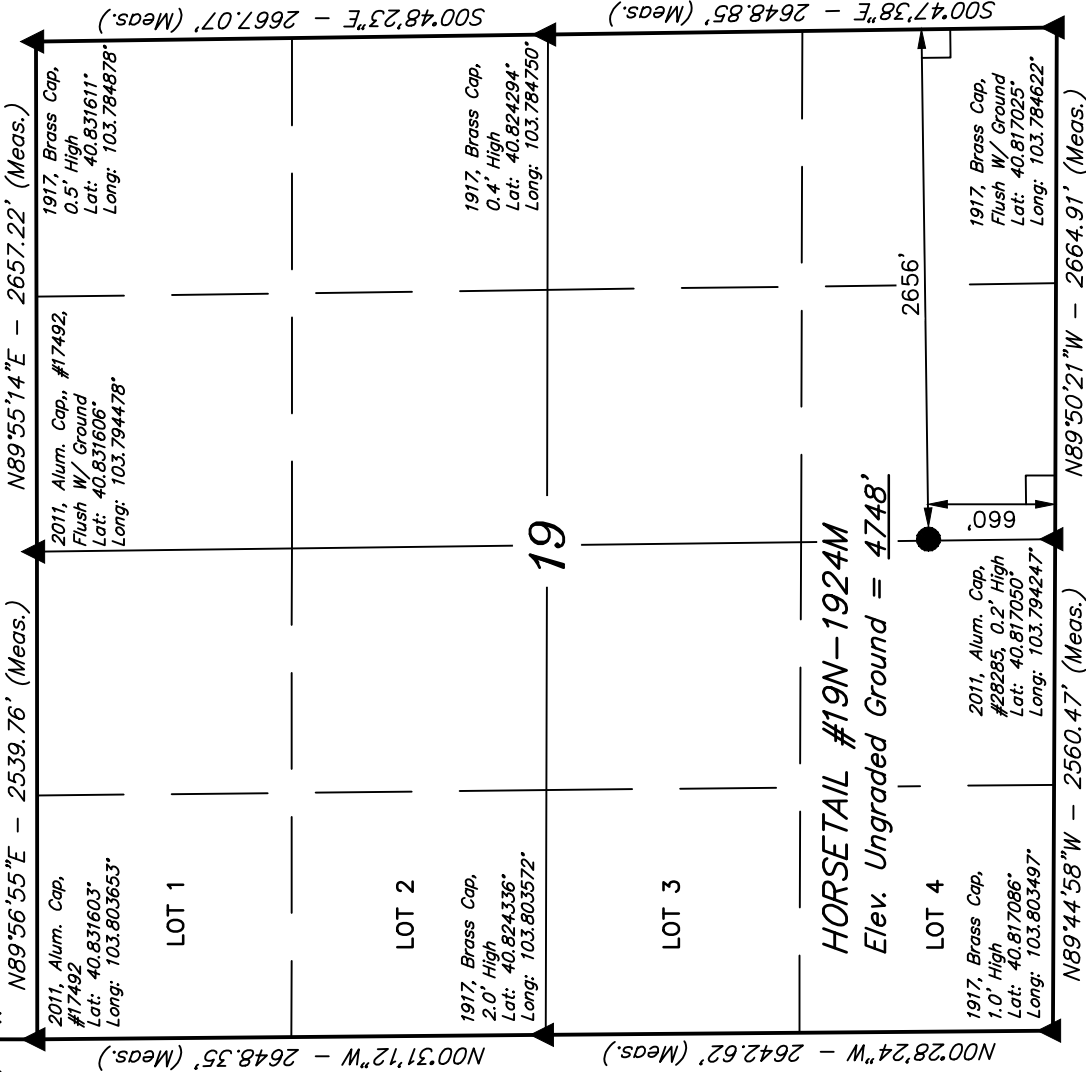


T10N, R57W, 6th. P.M

R 58  
W



WHITING OIL & GAS CORP.

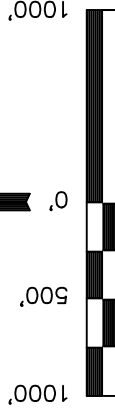
Well location, HORSETAIL #19N-1924M, located as shown in the SW 1/4 SE 1/4 of Section 19, T10N, R57W, 6th. P.M., Weld County, Colorado.

BASIS OF ELEVATION

SPOT ELEVATION LOCATED AT THE NORTHEAST CORNER OF SECTION 15, T9N, R58W, 6th P.M. TAKEN FROM THE GATEHOOK SPRING, QUADRANGLE, COLORADO, WELD COUNTY, 7.5 MINUTE QUAD (TOPOGRAPHIC MAP) PUBLISHED BY THE UNITED STATES DEPARTMENT OF THE INTERIOR, GEOLOGICAL SURVEY. SAID ELEVATION IS MARKED AS BEING 4679 FEET.

BASIS OF BEARINGS

BASIS OF BEARINGS IS A G.P.S. OBSERVATION.



S C A L E

CERTIFICATION TO REGISTERED LAND SURVEYOR  
THIS IS TO CERTIFY THAT THE ABOVE DATA WAS PREPARED FROM FIELD NOTES OF ACTUAL SURVEY MADE BY ME OR UNDER MY SUPERVISION AND THAT THE SAME ARE TRUE AND CORRECT TO THE BEST OF MY KNOWLEDGE AND BELIEF.  
DATE: 10/20/2011  
BY: [Signature]

REGISTERED LAND SURVEYOR  
REGISTRATION NO. 28285  
STATE OF COLORADO  
EXPIRATION DATE 12-31-13

UNTAH ENGINEERING & LAND SURVEYING  
85 SOUTH 200 EAST - VERNAL, UTAH 84078  
(435) 789-1017

SCALE 1" = 1000'	DATE SURVEYED: 11-27-13	DATE DRAWN: 12-20-13
PARTY DALLAS NIELSEN G.W. H.K.W.	REFERENCES G.L.O. PLAT	
WEATHER COOL	FILE	WHITING OIL & GAS CORP.

LEGEND:

- = 90° SYMBOL
- = PROPOSED WELL HEAD.
- ▲ = SECTION CORNERS LOCATED.

PDOP = 1.4
NAD 83 (SURFACE LOCATION) LATITUDE = 40°49'07.90" (40.818861) LONGITUDE = 103°47'39.30" (103.794250)
NAD 27 (SURFACE LOCATION) LATITUDE = 40°49'07.95" (40.818875) LONGITUDE = 103°47'37.49" (103.793747)