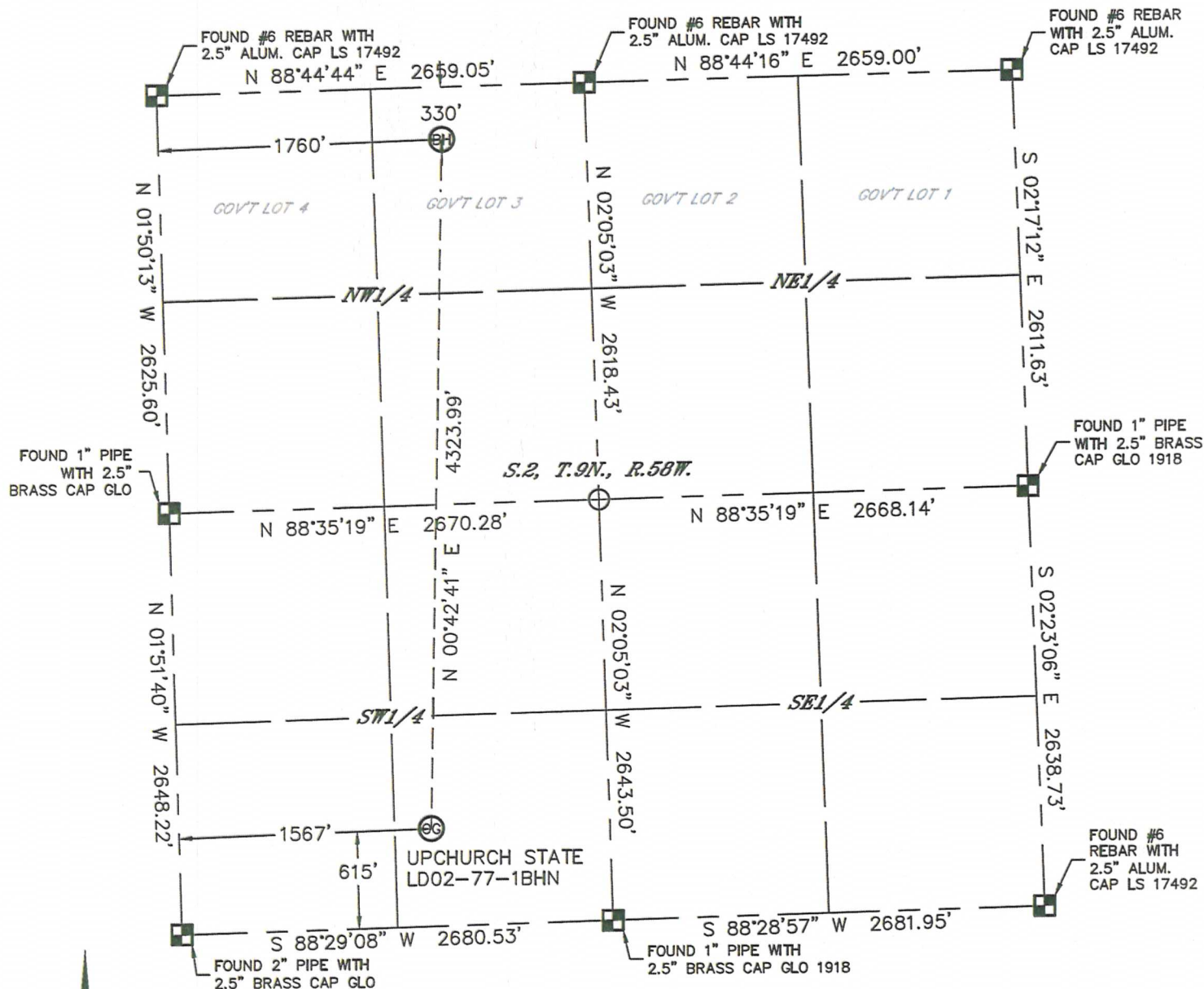


WELL LOCATION CERTIFICATE

THIS MAP DOES NOT REPRESENT A BOUNDARY SURVEY



SECTION: 2
TOWNSHIP: 9N
RANGE: 58W



In accordance with a request from Cody Ball with Noble Energy Inc., Lat40', Inc. has determined the surface location of the UPCHURCH STATE LD02-77-1BHN to be 615' from the SOUTH line and 1567' from the WEST line and the bottom hole to be 330' from the NORTH line and 1760' from the WEST line as measured at right angles from the section lines of Section 2, Township 9 North, Range 58 West of the Sixth Principal Meridian, County of Weld, State of Colorado.

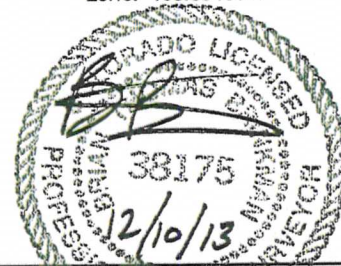
I hereby state that this Well Location Certificate was prepared by me, or under my direct supervision, that the fieldwork was completed on 9/6/2013, for and on behalf of Noble Energy Inc.. That this is not a Land Survey Plat or an Improvement Survey Plat, and that it is not to be relied upon for establishment of fence, building, or other future improvement lines.

NOTE:



- NOTE:
- 1) Bearings shown are Grid Bearings of the Colorado State Plane Coordinate System, North Zone, North American Datum 1983/2007. The lineal dimensions as contained herein are based upon the "U.S. Survey Foot."
 - 2) Ground elevations are based on an observed GPS elevation (NAVD 1988 DATUM).
 - 3) IMPROVEMENTS: See LOCATION DRAWING for all visible improvements within 500' of disturbed area.
 - 4) SURFACE USE: RANGELAND
 - 5) INSTRUMENT OPERATOR: BRIAN ROTTINGHAUS
 - 6) NEAREST EXISTING WELL: NO EX. WELLS IN SECTION
- NEAREST CULTURAL ITEMS:
BUILDING: 1628' SE
BUILDING UNIT: 3093' SW
HIGH OCCUPANCY BUILDING UNIT: 5280'+
DESIGNATED OUTSIDE ACTIVITY AREA: 5280'+
PUBLIC ROAD: 5280'+
ABOVEGROUND UTILITY: 2711' SW
RAILROAD: 5280'+
PROPERTY LINE: 615' S
- LEGEND
-  = ALIQUOT MONUMENT AS DE
 = CALCULATED POSITION

SURFACE LOCATION
LAT: 40.77498N
LONG: 103.83535W
PDOP: 1.4
ELEV: 4742'
1/4,1/4: SE1/4SW1/4

BOTTOM HOLE
LAT: 40.78683N
LONG: 103.83486W



LEGEND

-  = ALIQUOT MONUMENT AS DESCRIBED
 = CALCULATED POSITION

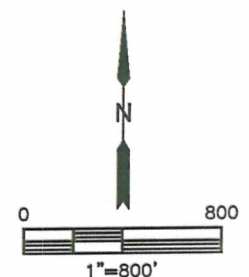
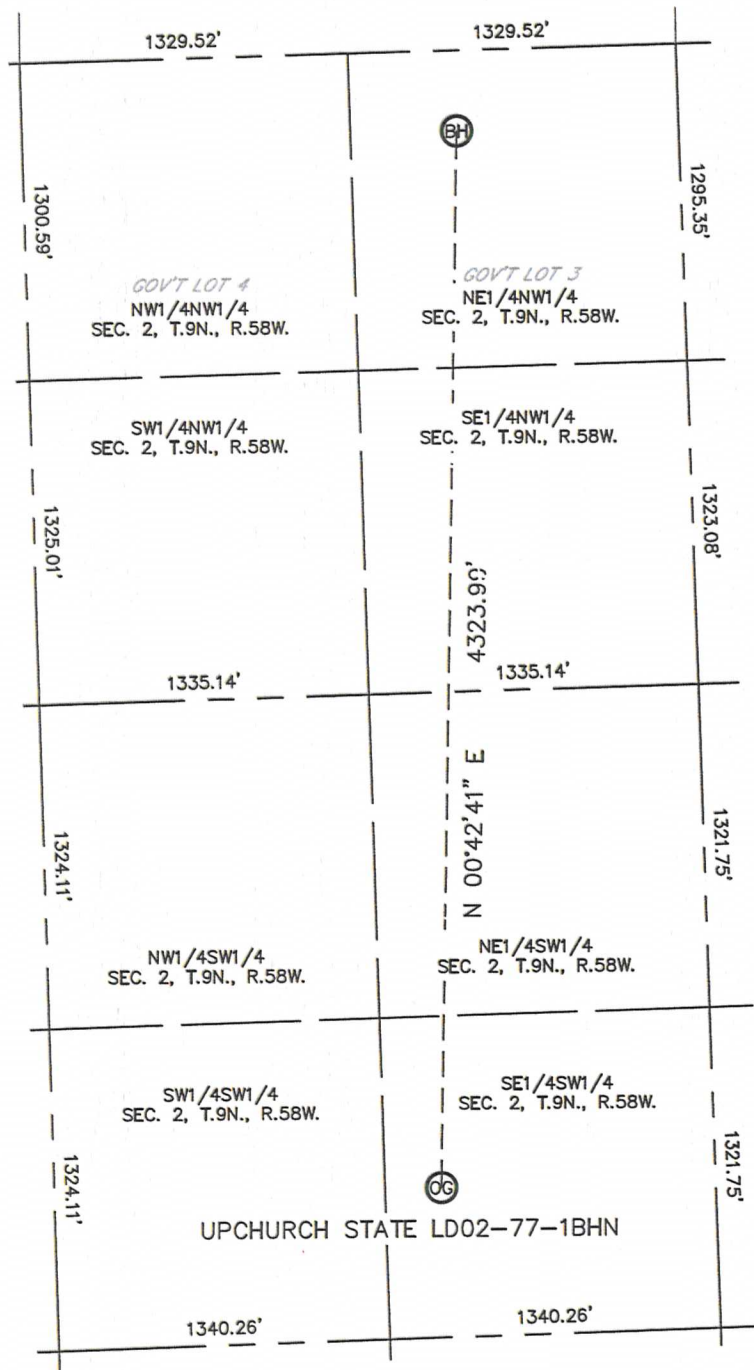
Brian T. Brinkman On behalf of L&L, Inc.
Colorado Licensed Professional Land Surveyor No. 38175 DATE: 12/10/2013
PROJECT#: 2013115



SITE SKETCH

UPCHURCH STATE LD02-77-1BHN

SECTION: 2
TOWNSHIP: 9N
RANGE: 58W



NOTE: NO EXISTING WELLS ADJACENT TO PROPOSED WELL BORE.