

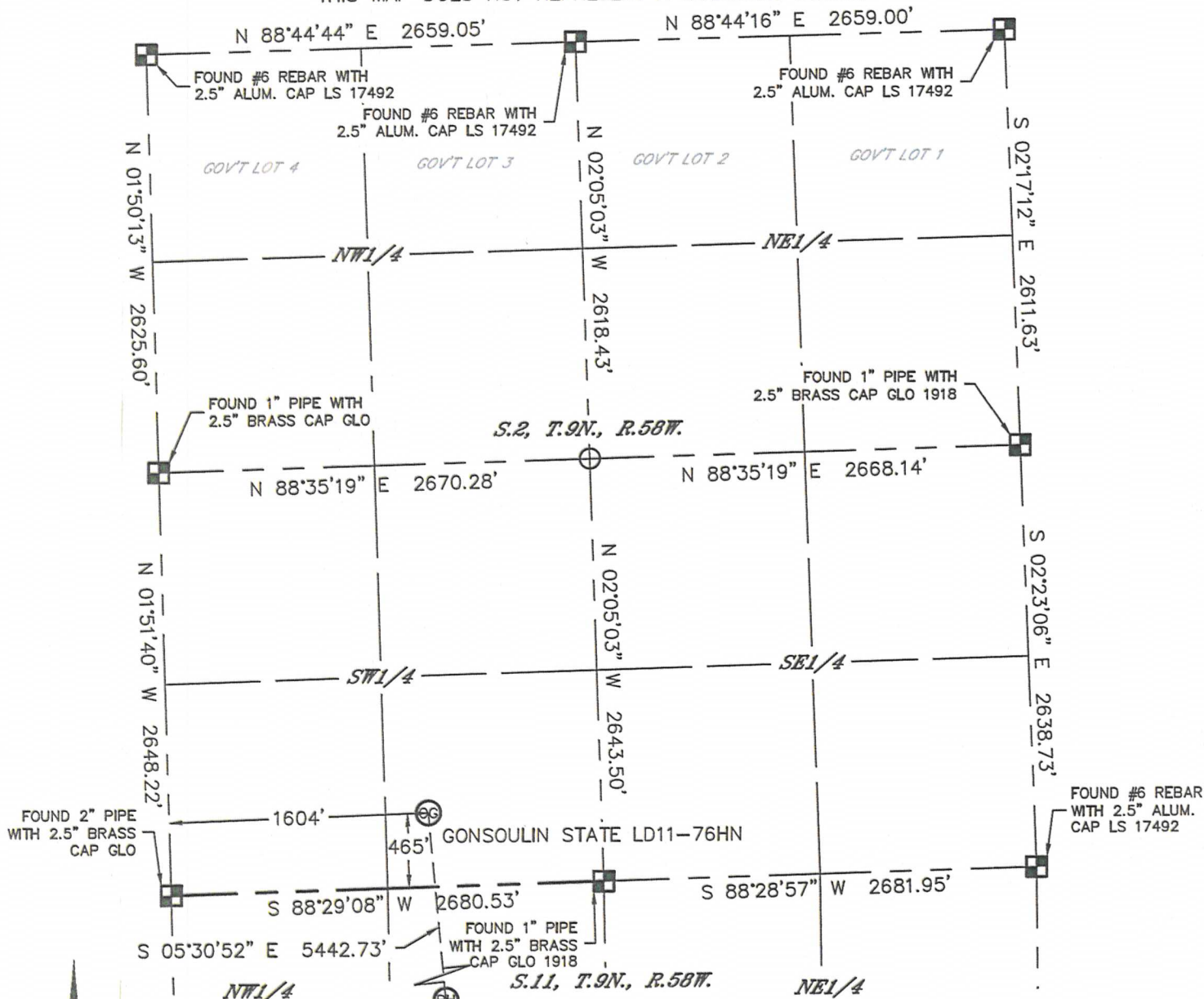


Lat40°, Inc. 1635 Foxtrail Drive, Suite 325 Loveland, CO 970-776-3321

WELL LOCATION CERTIFICATE

SECTION: 2
TOWNSHIP: 9N
RANGE: 58W

THIS MAP DOES NOT REPRESENT A BOUNDARY SURVEY



In accordance with a request from Cody Ball with Noble Energy Inc. Lat40°, Inc. has determined the surface location of the GONSOLIN STATE LD11-76HN to be 465' from the SOUTH line and 1604' from the WEST line as measured at right angles from the section lines of Section 2, Township 9 North, Range 58 West and the bottom hole to be 330' from the SOUTH line and 1980' from the WEST line as measured at right angles from the section lines of Section 11, Township 9 North, Range 58 West of the Sixth Principal Meridian, County of Weld, State of Colorado.

I hereby state that this Well Location Certificate was prepared by me, or under my direct supervision, that the fieldwork was completed on 9/6/2013, for and on behalf of Noble Energy Inc. That this is not a Land Survey Plat or an Improvement Survey Plat, and that it is not to be relied upon for establishment of fence, building, or other future improvement lines.

NOTE:

- 1) Bearings shown are Grid Bearings of the Colorado State Plane Coordinate System, North Zone, North American Datum 1983/2007. The lineal dimensions as contained herein are based upon the "U.S. Survey Foot."
 - 2) Ground elevations are based on an observed GPS elevation (NAVD 1988 DATUM).
 - 3) IMPROVEMENTS: See LOCATION DRAWING for all visible improvements within 500' of disturbed area.
 - 4) SURFACE USE: RANGELAND
 - 5) INSTRUMENT OPERATOR: BRIAN ROTTINGHAUS
 - 6) NEAREST EXISTING WELL: NO EX. WELLS IN SECTION
- NEAREST CULTURAL ITEMS:
BUILDING: 1545' SE
BUILDING UNIT: 2972' SW
HIGH OCCUPANCY BUILDING UNIT: 5280'+
DESIGNATED OUTSIDE ACTIVITY AREA: 5280'+
PUBLIC ROAD: 5280'+
ABOVEGROUND UTILITY: 2652' SW
RAILROAD: 5280'+
PROPERTY LINE: 465' S

SURFACE LOCATION

LAT: 40.77456°N
LONG: 103.83521°W
PDOP: 1.4
ELEV: 4739'
1/4, 1/4: SE1/4SW1/4

BOTTOM HOLE

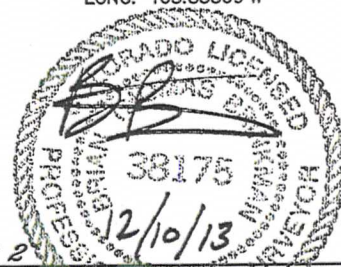
LAT: 40.75967°N
LONG: 103.83369°W

LEGEND

- = ALIQUOT MONUMENT AS DESCRIBED
○ = CALCULATED POSITION

SHEET 1 OF 2

Brian T. Brinkman On behalf of Lat40°, Inc.
Colorado Licensed Professional Land Surveyor No. 38175
DATE: 12/10/2013
PROJECT#: 2013115

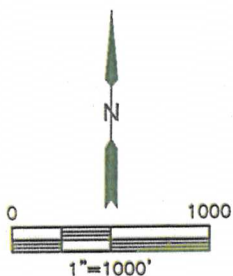
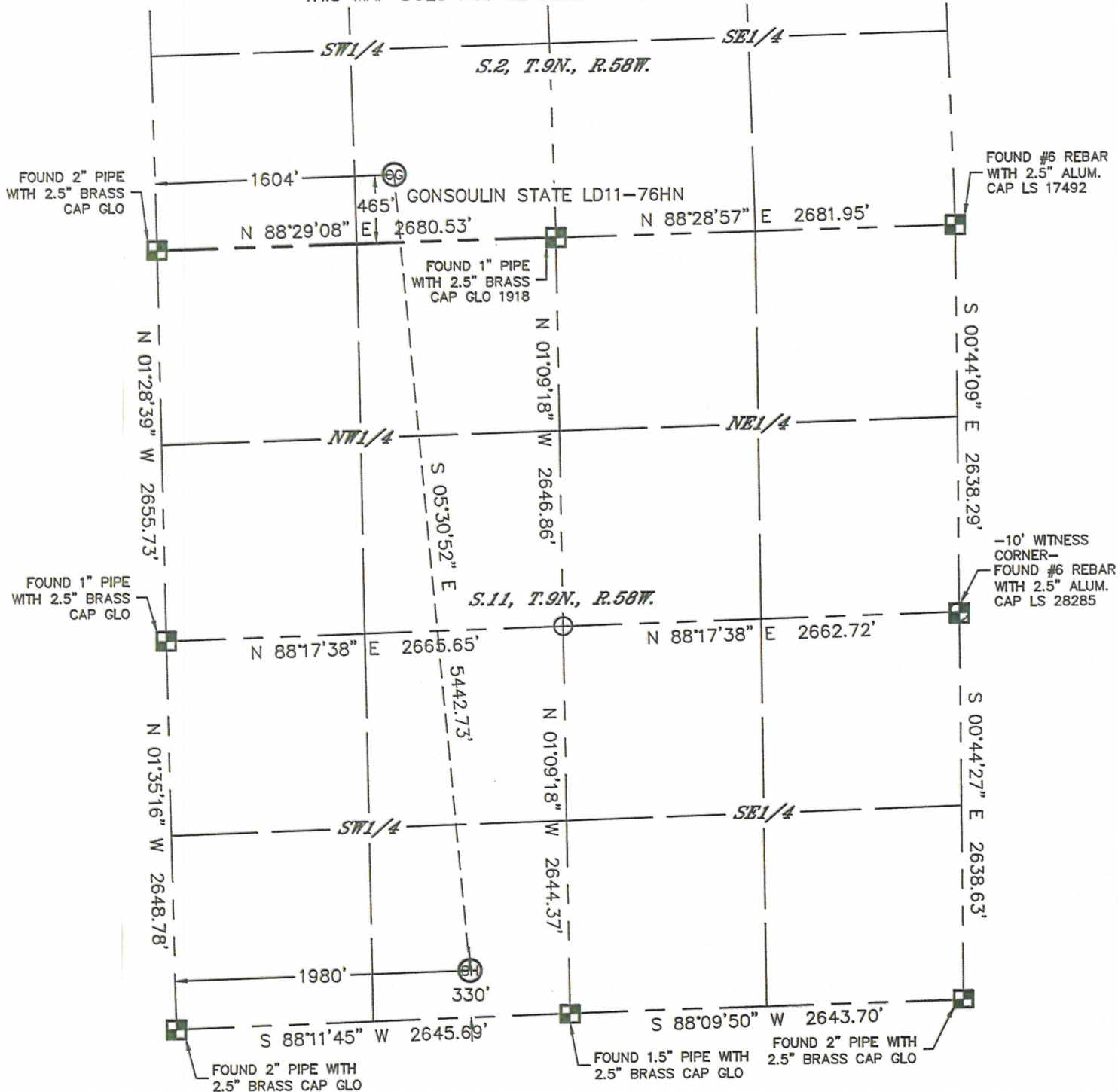




WELL LOCATION CERTIFICATE

SECTION: 2
TOWNSHIP: 9N
RANGE: 58W

THIS MAP DOES NOT REPRESENT A BOUNDARY SURVEY

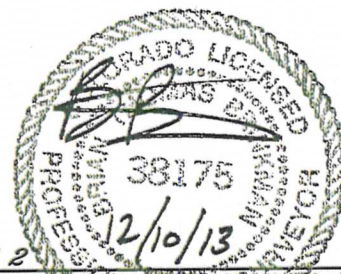


LEGEND

- = ALIQUOT MONUMENT AS DESCRIBED
- = CALCULATED POSITION

SHEET 2 OF 2

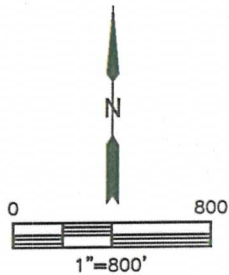
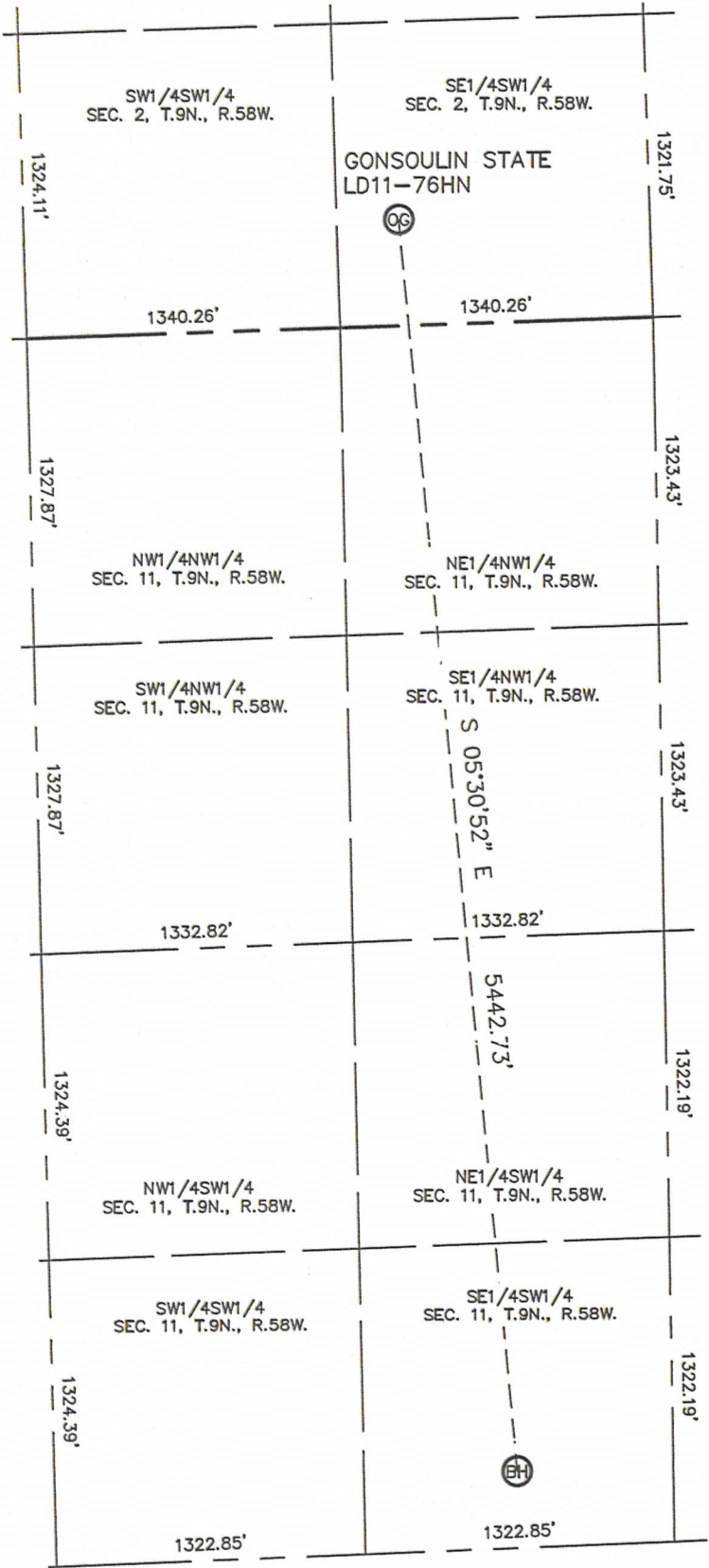
Brian T. Brinkman, On behalf of Lat40°, Inc.
Colorado Licensed Professional Land Surveyor No. 38175
DATE: 12/10/2013
PROJECT#: 2013115





SITE SKETCH
GONSOULIN STATE LD11-76HN

SECTION: 2
TOWNSHIP: 9N
RANGE: 58W



NOTE: NO EXISTING WELLS ADJACENT TO PROPOSED WELL BORE.