

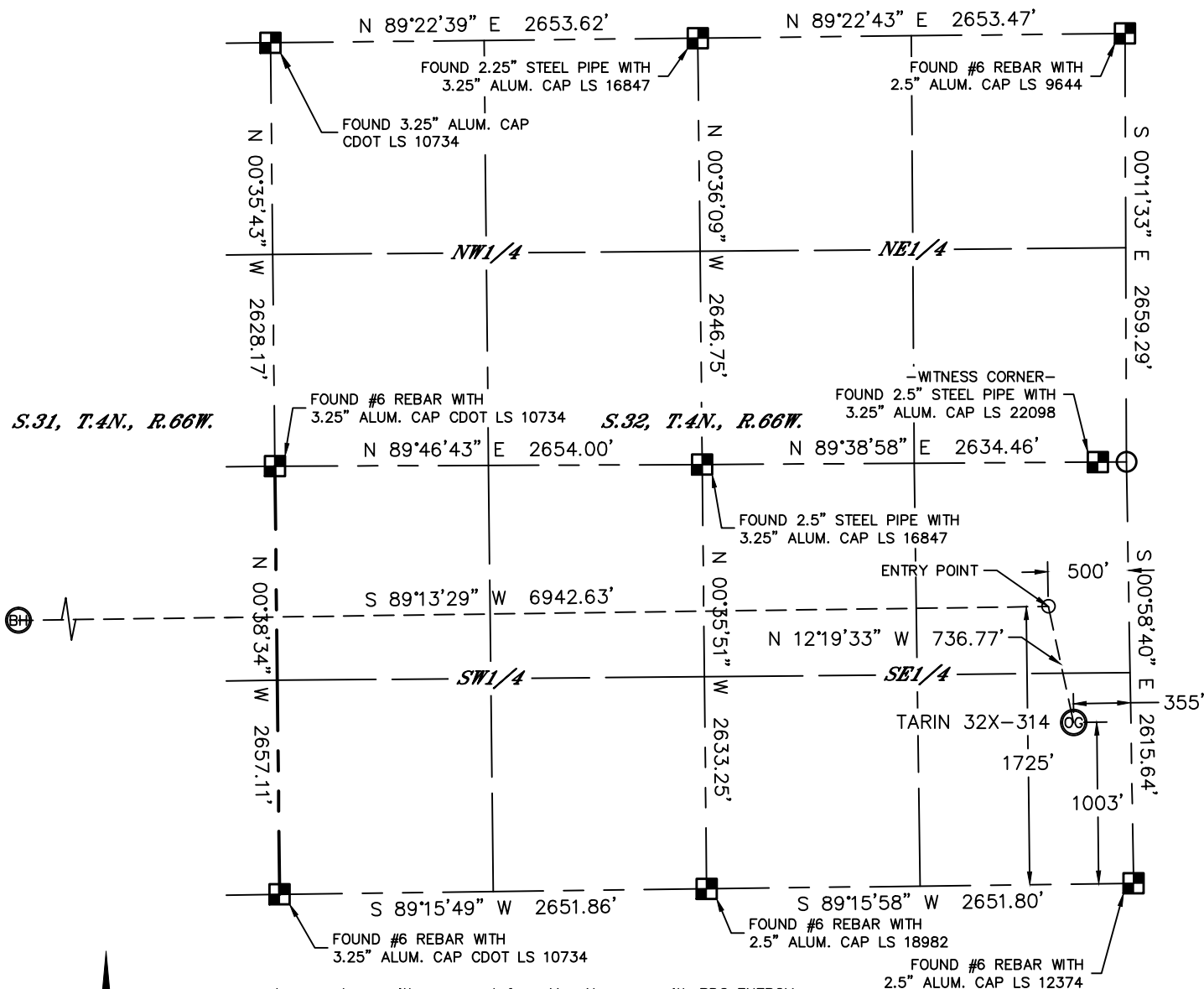


Lat40°, Inc. 1635 Foxtrail Drive, Suite 325 Loveland, CO 970-776-3321

# WELL LOCATION CERTIFICATE

THIS MAP DOES NOT REPRESENT A BOUNDARY SURVEY

SECTION: 32  
TOWNSHIP: 4N  
RANGE: 66W



In accordance with a request from Mac Neumann with PDC ENERGY

Lat40°, Inc. has determined the surface location of the TARIN 32X-314 to be 1003' from the SOUTH line and 355' from the EAST line as measured at right angles from the section lines of Section 32, Township 4 North, Range 66 West and the bottom hole to be 1725' from the SOUTH line and 2149' from the EAST line as measured at right angles from the section lines of Section 31, Township 4 North, Range 66 West of the Sixth Principal Meridian, County of Weld, State of Colorado.

I hereby state that this Well Location Certificate was prepared by me, or under my direct supervision, that the fieldwork was completed on 12/19/2013, for and on behalf of PDC ENERGY. That this is not a Land Survey Plat or an Improvement Survey Plat, and that it is not to be relied upon for establishment of fence, building, or other future improvement lines.

#### SURFACE LOCATION

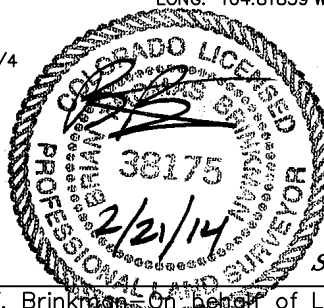
LAT: 40.26365°N  
LONG: 104.79317°W  
PDOP: 3.0  
ELEV: 4775'  
1/4,1/4: SE1/4SE1/4

#### BOTTOM HOLE

LAT: 40.26552°N  
LONG: 104.81859°W

#### ENTRY POINT

LAT: 40.26563°N  
LONG: 104.79372°W



SHEET 1 OF 2

#### LEGEND

- = ALIQUOT MONUMENT AS DESCRIBED  
○ = CALCULATED POSITION

Brian T. Brinkman, On Behalf of Lat40°, Inc.

Colorado Licensed Professional  
Land Surveyor No. 38175

DATE: 2/18/2014  
PROJECT#: 2013166

#### NOTE:

- 1) Bearings shown are Grid Bearings of the Colorado State Plane Coordinate System, North Zone, North American Datum 1983/2007. The lineal dimensions as contained herein are based upon the "U.S. Survey Foot."
  - 2) Ground elevations are based on an observed GPS elevation (NAVD 1988 DATUM).
  - 3) IMPROVEMENTS: See LOCATION DRAWING for all visible improvements within 500' of disturbed area.
  - 4) SURFACE USE: PASTURE
  - 5) INSTRUMENT OPERATOR: BRIAN ROTTINGHAUS
- NEAREST CULTURAL ITEMS:  
BUILDING: ±428' NW  
BUILDING UNIT: ±557' NE  
HIGH OCCUPANCY BUILDING UNIT: 5280'+  
DESIGNATED OUTSIDE ACTIVITY AREA: 5280'+  
PUBLIC ROAD: 351' E (CR29)  
ABOVEGROUND UTILITY: 535' NE  
RAILROAD: 735' NW  
PROPERTY LINE: 306' N

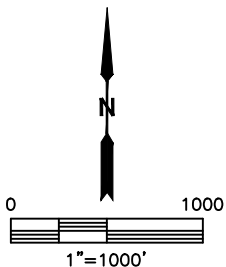
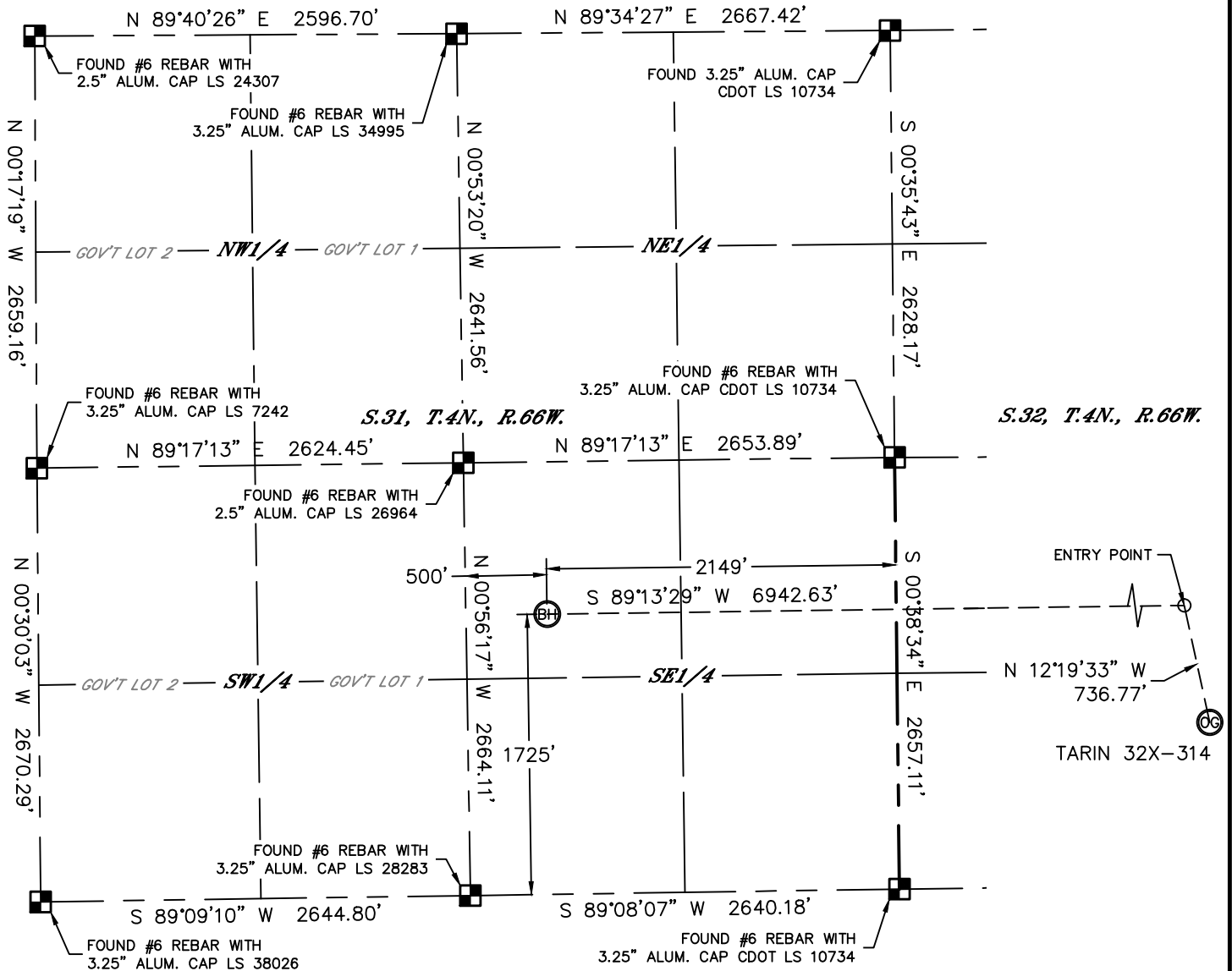


Lat40°, Inc. 1635 Foxtrail Drive, Suite 325 Loveland, CO 970-776-3321

# WELL LOCATION CERTIFICATE

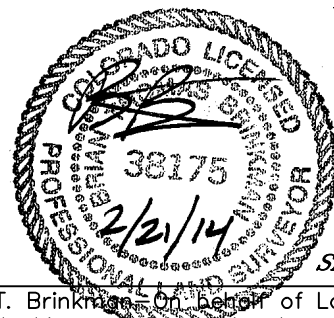
THIS MAP DOES NOT REPRESENT A BOUNDARY SURVEY

SECTION: 32  
TOWNSHIP: 4N  
RANGE: 66W



## LEGEND

- = ALIQUOT MONUMENT AS DESCRIBED
- = CALCULATED POSITION



SHEET 2 OF 2

Brian T. Brinkman, On Behalf of Lat40°, Inc.  
Colorado Licensed Professional  
Land Surveyor No. 38175  
DATE: 2/18/2014  
PROJECT#: 2013166

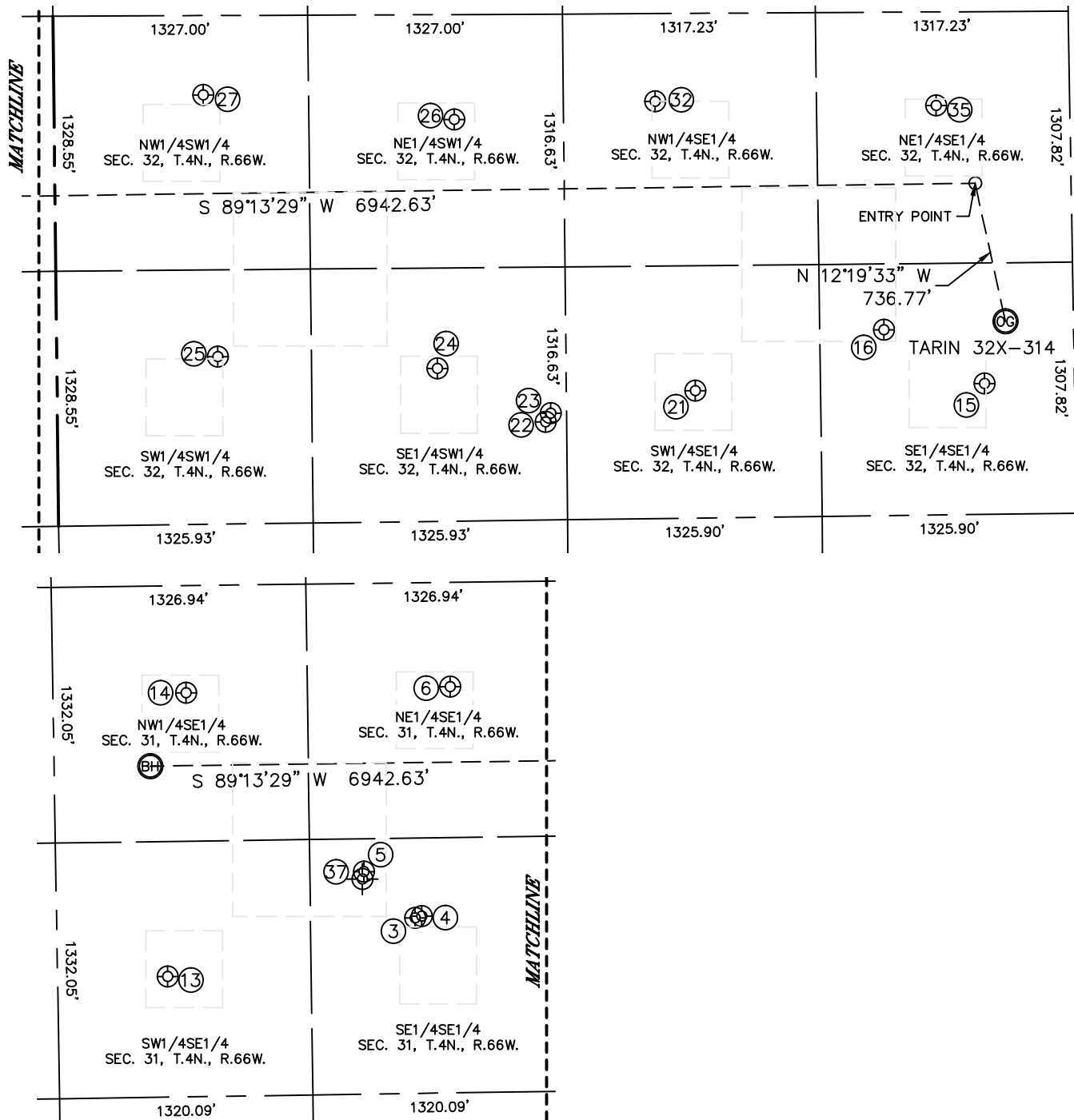


Lat40°, Inc. 1635 Foxtrail Drive, Suite 325 Loveland, CO 970-776-3321

# SITE SKETCH

TARIN 32X-314

SECTION: 32  
TOWNSHIP: 4N  
RANGE: 66W



SHEET 1 OF 2

DATE: 2/18/2014  
PROJECT#: 2013166



Lat40°, Inc. 1635 Foxtrail Drive, Suite 325 Loveland, CO 970-776-3321

## SITE SKETCH

TARIN 32X-314

SECTION: 32  
TOWNSHIP: 4N  
RANGE: 66W

WELL NO.	WELL NAME	SHL FOOTAGE				SHL LAT°	SHL LONG°	PDOP	ELEV (FT.)	1/4/1/4
3	WOLF 44-31	914	FSL	778	FEL	40.26332	-104.81367	1.9	4775	SESE
4	BENJAMIN 5	923	FSL	742	FEL	40.26335	-104.81354	1.9	4776	SESE
5	NICHOLAS 5	1158	FSL	1042	FEL	40.26399	-104.81461	1.9	4774	SESE
6	BENJAMIN 1	2115	FSL	582	FEL	40.26662	-104.81298	1.9	4772	NESE
13	FARR FARMS 1	628	FSL	2071	FEL	40.26251	-104.81829	3.7	4778	SWSE
14	NICHOLAS 1	2104	FSL	1958	FEL	40.26656	-104.81791	1.7	4776	NWSE
15	GLEN 44-32	681	FSL	470	FEL	40.26276	-104.79357	1.5	4776	SESE
16	FLOYD 5	968	FSL	988	FEL	40.26354	-104.79544	2.1	4771	SESE
21	GLEN 1	663	FSL	1976	FEL	40.26269	-104.79897	1.6	4772	SWSE
22	WOLFE 5	511	FSL	2542	FWL	40.26227	-104.80177	1.6	4772	SESW
23	WOLFE 6I	555	FSL	2570	FWL	40.26239	-104.80167	1.6	4772	SESW
24	WOLFE 1	797	FSL	1982	FWL	40.26304	-104.80378	1.7	4771	SESW
25	WOLFE 14-32	873	FSL	838	FWL	40.26324	-104.80788	1.8	4772	SWSW
26	CADI 1	2092	FSL	2085	FWL	40.26660	-104.80343	2.0	4773	NESW
27	WOLFE 13-32	2237	FSL	778	FWL	40.26698	-104.80811	2.1	4771	NWSW
32	COREY 31-32	2173	FSL	2159	FEL	40.26683	-104.79967	1.9	4767	NWSE
35	FLOYD 1	2132	FSL	696	FEL	40.26674	-104.79443	2.1	4768	NESE
37	UPRR 41 PAN AM "J" 1	1120	FSL	1050	FEL	40.26389	-104.81467	N/A	4776	SESE

NOTE: THE ABANDONED WELL DATA SHOWN IN RED ABOVE WAS OBTAINED FROM COGCC SCOUT CARDS.

*SHEET 2 OF 2*

DATE: 2/18/2014  
PROJECT#: 2013166