

# EXTRACTION OIL & GAS

Location: COLORADO Slot: SLOT#12 VARRA #12(1459'FSL & 784'FWL,SEC.05)  
Field: WELD COUNTY (NAD83/TRUE NORTH) Well: VARRA #12  
Facility: SEC.05-T06N-R67W Wellbore: VARRA #12 PWB

Plot reference wellpath is VARRA #12 (REV-A.0) PWP

True vertical depths are referenced to RIG (RKB)	Grid System: NAD83 / Lambert Colorado SP, Northern Zone (501), US feet
Measured depths are referenced to RIG (RKB)	North Reference: True north
RIG (RKB) to Mean Sea Level: 4898 feet	Scale: True distance
Mean Sea Level to Mud line (At Slot: SLOT#12 VARRA #12(1459'FSL & 784'FWL,SEC.05)): 0 feet	Depths are in feet
Coordinates are in feet referenced to Slot	Created by: painsetr on 4/29/2014

## Location Information

Facility Name			Grid East (US ft)	Grid North (US ft)	Latitude	Longitude
SEC.05-T06N-R67W			3160186.786	1430380.222	40°30'48.118"N	104°55'25.957"W
Slot	Local N (ft)	Local E (ft)	Grid East (US ft)	Grid North (US ft)	Latitude	Longitude
SLOT#12 VARRA #12(1459'FSL & 784'FWL,SEC.05)	-285.99	-1.93	3160186.714	1430094.235	40°30'45.292"N	104°55'25.982"W
RIG (RKB) to Mud line (At Slot: SLOT#12 VARRA #12(1459'FSL & 784'FWL,SEC.05))					4898ft	
Mean Sea Level to Mud line (At Slot: SLOT#12 VARRA #12(1459'FSL & 784'FWL,SEC.05))					0ft	
RIG (RKB) to Mean Sea Level					4898ft	

## Targets

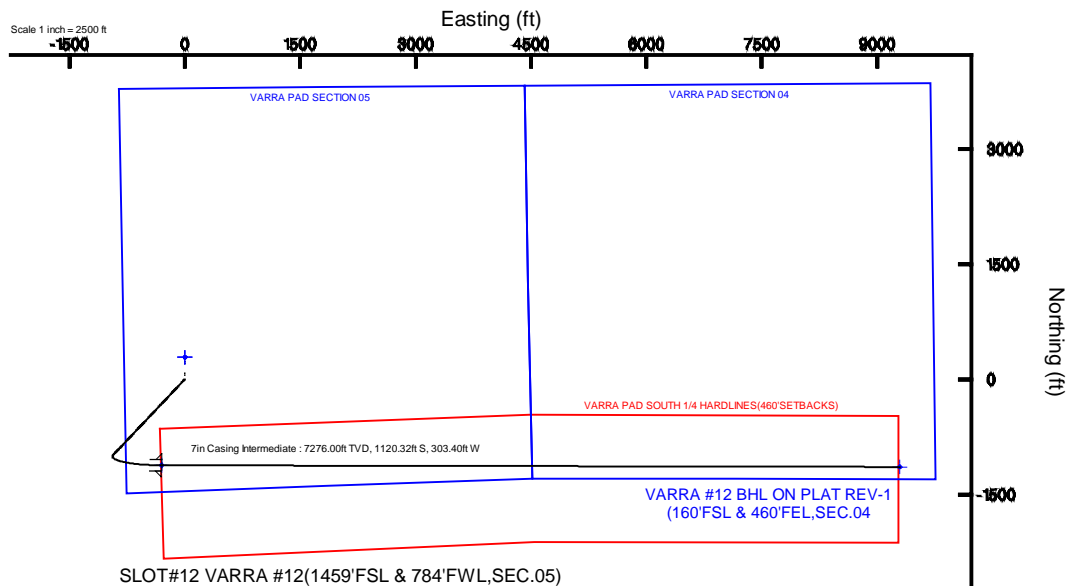
Name	MD (ft)	TVD (ft)	Local N (ft)	Local E (ft)	Grid East (US ft)	Grid North (US ft)	Latitude	Longitude
VARRA PAD SECTION 04		0.00	285.95	1.92	3160186.77	1430380.18	40°30'48.118"N	104°55'25.957"W
VARRA PAD SECTION 05		0.00	285.95	1.92	3160186.77	1430380.18	40°30'48.118"N	104°55'25.957"W
VARRA #12 BHL ON PLAT REV-1(160'FSL & 460'FEL,SEC.04)	17413.82	7276.00	-1141.89	9294.19	3169437.81	1429012.79	40°30'33.991"N	104°53'25.656"W
VARRA #12 LANDING POINT	7816.20	7276.00	-1120.32	-303.41	3158890.60	1428972.01	40°30'34.222"N	104°55'29.910"W
VARRA PAD SOUTH 1/4 HARDLINE(460'SETBACKS)		7420.00	285.95	1.92	3160186.77	1430380.18	40°30'48.118"N	104°55'25.957"W

## Survey Program

Start MD (ft)	End MD (ft)	Tool	Model	Log Name/Comment	Wellbore
24.00	18000.00	NaviTrak	NaviTrak (Standard)		VARRA #12 PWB

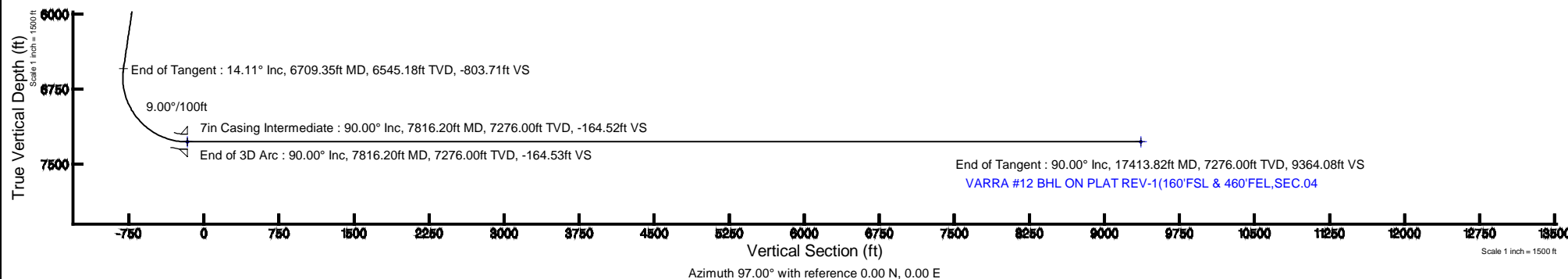
## Well Profile Data

Design Comment	MD (ft)	Inc (°)	Az (°)	TVD (ft)	Local N (ft)	Local E (ft)	DLS (°/100ft)	VS (ft)
Tie On	24.00	0.000	223.377	24.00	0.00	0.00	0.00	0.00
End of Tangent	800.00	0.000	223.377	800.00	0.00	0.00	0.00	0.00
End of Build	1505.62	14.112	223.377	1498.51	-62.84	-59.38	2.00	-51.27
End of Tangent	6709.35	14.112	223.377	6545.18	-985.08	-930.78	0.00	-803.71
End of 3D Arc	7816.20	90.000	90.129	7276.00	-1120.32	-303.41	9.00	-164.53
End of Tangent	17413.82	90.000	90.129	7276.00	-1141.89	9294.19	0.00	9364.08



BGGM (1945.0 to 2015.0) Dip: 67.00° Field: 52835.3 nT  
Magnetic North is 8.62 degrees East of True North (at 4/17/2014)

To correct azimuth from Magnetic to True add 8.62 degrees





# Planned Wellpath Report

VARRA #12 (REV-A.0) PWP

Page 1 of 8



## REFERENCE WELLPATH IDENTIFICATION

Operator	EXTRACTION OIL & GAS	Slot	SLOT#12 VARRA #12(1459'FSL & 784'FWL,SEC.05)
Area	COLORADO	Well	VARRA #12
Field	WELD COUNTY (NAD83/TRUE NORTH)	Wellbore	VARRA #12 PWB
Facility	SEC.05-T06N-R67W		

## REPORT SETUP INFORMATION

Projection System	NAD83 / Lambert Colorado SP, Northern Zone (501), US feet	Software System	WellArchitect® 4.0.0
North Reference	True	User	Painsetr
Scale	0.999967	Report Generated	4/29/2014 at 2:49:05 PM
Convergence at slot	n/a	Database/Source file	WA_Denver/VARRA_#12_PWB.xml

## WELLPATH LOCATION

	Local coordinates		Grid coordinates		Geographic coordinates	
	North[ft]	East[ft]	Easting[US ft]	Northing[US ft]	Latitude	Longitude
Slot Location	-285.99	-1.93	3160186.71	1430094.24	40°30'45.292"N	104°55'25.982"W
Facility Reference Pt			3160186.79	1430380.22	40°30'48.118"N	104°55'25.957"W
Field Reference Pt			3185481.27	1419166.81	40°28'55.560"N	104°49'59.556"W

## WELLPATH DATUM

Calculation method	Minimum curvature	RIG (RKB) to Facility Vertical Datum	4898.00ft
Horizontal Reference Pt	Slot	RIG (RKB) to Mean Sea Level	4898.00ft
Vertical Reference Pt	RIG (RKB)	RIG (RKB) to Mud Line at Slot (SLOT#12 VARRA #12(1459'FSL & 784'FWL,SEC.05))	4898.00ft
MD Reference Pt	RIG (RKB)	Section Origin	N 0.00, E 0.00 ft
Field Vertical Reference	Mean Sea Level	Section Azimuth	97.00°



# Planned Wellpath Report

VARRA #12 (REV-A.0) PWP

Page 2 of 8



## REFERENCE WELLPATH IDENTIFICATION

Operator	EXTRACTION OIL & GAS	Slot	SLOT#12 VARRA #12(1459'FSL & 784'FWL,SEC.05)
Area	COLORADO	Well	VARRA #12
Field	WELD COUNTY (NAD83/TRUE NORTH)	Wellbore	VARRA #12 PWB
Facility	SEC.05-T06N-R67W		

## WELLPATH DATA (180 stations) † = interpolated/extrapolated station

MD [ft]	Inclination [°]	Azimuth [°]	TVD [ft]	Vert Sect [ft]	North [ft]	East [ft]	DLS [°/100ft]	Comments
0.00†	0.000	223.377	0.00	0.00	0.00	0.00	0.00	
24.00	0.000	223.377	24.00	0.00	0.00	0.00	0.00	Tie On
124.00†	0.000	223.377	124.00	0.00	0.00	0.00	0.00	
224.00†	0.000	223.377	224.00	0.00	0.00	0.00	0.00	
324.00†	0.000	223.377	324.00	0.00	0.00	0.00	0.00	
424.00†	0.000	223.377	424.00	0.00	0.00	0.00	0.00	
524.00†	0.000	223.377	524.00	0.00	0.00	0.00	0.00	
624.00†	0.000	223.377	624.00	0.00	0.00	0.00	0.00	
724.00†	0.000	223.377	724.00	0.00	0.00	0.00	0.00	
800.00	0.000	223.377	800.00	0.00	0.00	0.00	0.00	End of Tangent
824.00†	0.480	223.377	824.00	-0.06	-0.07	-0.07	2.00	
924.00†	2.480	223.377	923.96	-1.59	-1.95	-1.84	2.00	
1024.00†	4.480	223.377	1023.77	-5.19	-6.36	-6.01	2.00	
1124.00†	6.480	223.377	1123.31	-10.85	-13.30	-12.57	2.00	
1224.00†	8.480	223.377	1222.45	-18.57	-22.76	-21.51	2.00	
1324.00†	10.480	223.377	1321.08	-28.34	-34.74	-32.82	2.00	
1424.00†	12.480	223.377	1419.08	-40.14	-49.20	-46.49	2.00	
1505.62	14.112	223.377	1498.51	-51.27	-62.84	-59.38	2.00	End of Build
1524.00†	14.112	223.377	1516.33	-53.93	-66.10	-62.46	0.00	
1624.00†	14.112	223.377	1613.31	-68.39	-83.82	-79.20	0.00	
1724.00†	14.112	223.377	1710.30	-82.85	-101.55	-95.95	0.00	
1824.00†	14.112	223.377	1807.28	-97.31	-119.27	-112.70	0.00	
1924.00†	14.112	223.377	1904.26	-111.77	-136.99	-129.44	0.00	
2024.00†	14.112	223.377	2001.24	-126.23	-154.72	-146.19	0.00	
2124.00†	14.112	223.377	2098.22	-140.69	-172.44	-162.93	0.00	
2224.00†	14.112	223.377	2195.21	-155.15	-190.16	-179.68	0.00	
2324.00†	14.112	223.377	2292.19	-169.61	-207.88	-196.42	0.00	
2424.00†	14.112	223.377	2389.17	-184.07	-225.61	-213.17	0.00	
2524.00†	14.112	223.377	2486.15	-198.53	-243.33	-229.91	0.00	
2624.00†	14.112	223.377	2583.13	-212.99	-261.05	-246.66	0.00	



# Planned Wellpath Report

VARRA #12 (REV-A.0) PWP

Page 3 of 8



## REFERENCE WELLPATH IDENTIFICATION

Operator	EXTRACTION OIL & GAS	Slot	SLOT#12 VARRA #12(1459'FSL & 784'FWL,SEC.05)
Area	COLORADO	Well	VARRA #12
Field	WELD COUNTY (NAD83/TRUE NORTH)	Wellbore	VARRA #12 PWB
Facility	SEC.05-T06N-R67W		

## WELLPATH DATA (180 stations) † = interpolated/extrapolated station

MD [ft]	Inclination [°]	Azimuth [°]	TVD [ft]	Vert Sect [ft]	North [ft]	East [ft]	DLS [°/100ft]	Comments
2724.00†	14.112	223.377	2680.12	-227.45	-278.77	-263.41	0.00	
2824.00†	14.112	223.377	2777.10	-241.91	-296.50	-280.15	0.00	
2924.00†	14.112	223.377	2874.08	-256.36	-314.22	-296.90	0.00	
3024.00†	14.112	223.377	2971.06	-270.82	-331.94	-313.64	0.00	
3124.00†	14.112	223.377	3068.04	-285.28	-349.66	-330.39	0.00	
3224.00†	14.112	223.377	3165.03	-299.74	-367.39	-347.13	0.00	
3324.00†	14.112	223.377	3262.01	-314.20	-385.11	-363.88	0.00	
3424.00†	14.112	223.377	3358.99	-328.66	-402.83	-380.63	0.00	
3524.00†	14.112	223.377	3455.97	-343.12	-420.55	-397.37	0.00	
3624.00†	14.112	223.377	3552.95	-357.58	-438.28	-414.12	0.00	
3724.00†	14.112	223.377	3649.93	-372.04	-456.00	-430.86	0.00	
3824.00†	14.112	223.377	3746.92	-386.50	-473.72	-447.61	0.00	
3924.00†	14.112	223.377	3843.90	-400.96	-491.44	-464.35	0.00	
4024.00†	14.112	223.377	3940.88	-415.42	-509.17	-481.10	0.00	
4124.00†	14.112	223.377	4037.86	-429.88	-526.89	-497.84	0.00	
4224.00†	14.112	223.377	4134.84	-444.34	-544.61	-514.59	0.00	
4324.00†	14.112	223.377	4231.83	-458.80	-562.33	-531.34	0.00	
4424.00†	14.112	223.377	4328.81	-473.26	-580.06	-548.08	0.00	
4524.00†	14.112	223.377	4425.79	-487.72	-597.78	-564.83	0.00	
4624.00†	14.112	223.377	4522.77	-502.18	-615.50	-581.57	0.00	
4724.00†	14.112	223.377	4619.75	-516.64	-633.22	-598.32	0.00	
4824.00†	14.112	223.377	4716.74	-531.10	-650.95	-615.06	0.00	
4924.00†	14.112	223.377	4813.72	-545.55	-668.67	-631.81	0.00	
5024.00†	14.112	223.377	4910.70	-560.01	-686.39	-648.56	0.00	
5124.00†	14.112	223.377	5007.68	-574.47	-704.11	-665.30	0.00	
5224.00†	14.112	223.377	5104.66	-588.93	-721.84	-682.05	0.00	
5324.00†	14.112	223.377	5201.65	-603.39	-739.56	-698.79	0.00	
5424.00†	14.112	223.377	5298.63	-617.85	-757.28	-715.54	0.00	
5524.00†	14.112	223.377	5395.61	-632.31	-775.00	-732.28	0.00	
5624.00†	14.112	223.377	5492.59	-646.77	-792.73	-749.03	0.00	



# Planned Wellpath Report

VARRA #12 (REV-A.0) PWP

Page 4 of 8



## REFERENCE WELLPATH IDENTIFICATION

Operator	EXTRACTION OIL & GAS	Slot	SLOT#12 VARRA #12(1459'FSL & 784'FWL,SEC.05)
Area	COLORADO	Well	VARRA #12
Field	WELD COUNTY (NAD83/TRUE NORTH)	Wellbore	VARRA #12 PWB
Facility	SEC.05-T06N-R67W		

## WELLPATH DATA (180 stations) † = interpolated/extrapolated station

MD [ft]	Inclination [°]	Azimuth [°]	TVD [ft]	Vert Sect [ft]	North [ft]	East [ft]	DLS [°/100ft]	Comments
5724.00†	14.112	223.377	5589.57	-661.23	-810.45	-765.77	0.00	
5824.00†	14.112	223.377	5686.56	-675.69	-828.17	-782.52	0.00	
5924.00†	14.112	223.377	5783.54	-690.15	-845.89	-799.27	0.00	
6024.00†	14.112	223.377	5880.52	-704.61	-863.62	-816.01	0.00	
6124.00†	14.112	223.377	5977.50	-719.07	-881.34	-832.76	0.00	
6224.00†	14.112	223.377	6074.48	-733.53	-899.06	-849.50	0.00	
6324.00†	14.112	223.377	6171.47	-747.99	-916.78	-866.25	0.00	
6424.00†	14.112	223.377	6268.45	-762.45	-934.51	-882.99	0.00	
6524.00†	14.112	223.377	6365.43	-776.91	-952.23	-899.74	0.00	
6624.00†	14.112	223.377	6462.41	-791.37	-969.95	-916.48	0.00	
6709.35	14.112	223.377	6545.18	-803.71	-985.08	-930.78	0.00	End of Tangent
6724.00†	13.259	219.125	6559.42	-805.66	-987.68	-933.06	9.00	
6824.00†	10.401	176.237	6657.47	-810.08	-1005.62	-939.72	9.00	
6924.00†	14.170	136.624	6755.33	-798.94	-1023.56	-930.70	9.00	
7024.00†	21.298	118.147	6850.59	-772.52	-1041.06	-906.23	9.00	
7124.00†	29.437	109.064	6940.90	-731.47	-1057.69	-866.91	9.00	
7224.00†	37.941	103.714	7024.05	-676.79	-1073.03	-813.71	9.00	
7324.00†	46.610	100.098	7097.98	-609.84	-1086.72	-747.94	9.00	
7424.00†	55.363	97.397	7160.88	-532.26	-1098.41	-671.21	9.00	
7524.00†	64.164	95.216	7211.19	-445.97	-1107.82	-585.43	9.00	
7624.00†	72.994	93.340	7247.68	-353.08	-1114.71	-492.69	9.00	
7724.00†	81.839	91.634	7269.44	-255.89	-1118.91	-395.28	9.00	
7816.20	90.000	90.129	7276.00 <sup>1</sup>	-164.53	-1120.32	-303.41	9.00	End of 3D Arc
7824.00†	90.000	90.129	7276.00	-156.78	-1120.34	-295.60	0.00	
7924.00†	90.000	90.129	7276.00	-57.50	-1120.56	-195.60	0.00	
8024.00†	90.000	90.129	7276.00	41.78	-1120.79	-95.61	0.00	
8124.00†	90.000	90.129	7276.00	141.06	-1121.01	4.39	0.00	
8224.00†	90.000	90.129	7276.00	240.34	-1121.24	104.39	0.00	
8324.00†	90.000	90.129	7276.00	339.62	-1121.46	204.39	0.00	
8424.00†	90.000	90.129	7276.00	438.90	-1121.69	304.39	0.00	



# Planned Wellpath Report

VARRA #12 (REV-A.0) PWP

Page 5 of 8



## REFERENCE WELLPATH IDENTIFICATION

Operator	EXTRACTION OIL & GAS	Slot	SLOT#12 VARRA #12(1459'FSL & 784'FWL,SEC.05)
Area	COLORADO	Well	VARRA #12
Field	WELD COUNTY (NAD83/TRUE NORTH)	Wellbore	VARRA #12 PWB
Facility	SEC.05-T06N-R67W		

## WELLPATH DATA (180 stations) † = interpolated/extrapolated station

MD [ft]	Inclination [°]	Azimuth [°]	TVD [ft]	Vert Sect [ft]	North [ft]	East [ft]	DLS [°/100ft]	Comments
8524.00†	90.000	90.129	7276.00	538.19	-1121.91	404.39	0.00	
8624.00†	90.000	90.129	7276.00	637.47	-1122.13	504.39	0.00	
8724.00†	90.000	90.129	7276.00	736.75	-1122.36	604.39	0.00	
8824.00†	90.000	90.129	7276.00	836.03	-1122.58	704.39	0.00	
8924.00†	90.000	90.129	7276.00	935.31	-1122.81	804.39	0.00	
9024.00†	90.000	90.129	7276.00	1034.59	-1123.03	904.39	0.00	
9124.00†	90.000	90.129	7276.00	1133.87	-1123.26	1004.39	0.00	
9224.00†	90.000	90.129	7276.00	1233.15	-1123.48	1104.39	0.00	
9324.00†	90.000	90.129	7276.00	1332.43	-1123.71	1204.39	0.00	
9424.00†	90.000	90.129	7276.00	1431.71	-1123.93	1304.39	0.00	
9524.00†	90.000	90.129	7276.00	1530.99	-1124.16	1404.39	0.00	
9624.00†	90.000	90.129	7276.00	1630.27	-1124.38	1504.39	0.00	
9724.00†	90.000	90.129	7276.00	1729.56	-1124.61	1604.39	0.00	
9824.00†	90.000	90.129	7276.00	1828.84	-1124.83	1704.39	0.00	
9924.00†	90.000	90.129	7276.00	1928.12	-1125.06	1804.39	0.00	
10024.00†	90.000	90.129	7276.00	2027.40	-1125.28	1904.39	0.00	
10124.00†	90.000	90.129	7276.00	2126.68	-1125.51	2004.39	0.00	
10224.00†	90.000	90.129	7276.00	2225.96	-1125.73	2104.39	0.00	
10324.00†	90.000	90.129	7276.00	2325.24	-1125.96	2204.39	0.00	
10424.00†	90.000	90.129	7276.00	2424.52	-1126.18	2304.39	0.00	
10524.00†	90.000	90.129	7276.00	2523.80	-1126.40	2404.39	0.00	
10624.00†	90.000	90.129	7276.00	2623.08	-1126.63	2504.39	0.00	
10724.00†	90.000	90.129	7276.00	2722.36	-1126.85	2604.39	0.00	
10824.00†	90.000	90.129	7276.00	2821.64	-1127.08	2704.39	0.00	
10924.00†	90.000	90.129	7276.00	2920.93	-1127.30	2804.39	0.00	
11024.00†	90.000	90.129	7276.00	3020.21	-1127.53	2904.39	0.00	
11124.00†	90.000	90.129	7276.00	3119.49	-1127.75	3004.39	0.00	
11224.00†	90.000	90.129	7276.00	3218.77	-1127.98	3104.39	0.00	
11324.00†	90.000	90.129	7276.00	3318.05	-1128.20	3204.39	0.00	
11424.00†	90.000	90.129	7276.00	3417.33	-1128.43	3304.39	0.00	



# Planned Wellpath Report

VARRA #12 (REV-A.0) PWP

Page 6 of 8



## REFERENCE WELLPATH IDENTIFICATION

Operator	EXTRACTION OIL & GAS	Slot	SLOT#12 VARRA #12(1459'FSL & 784'FWL,SEC.05)
Area	COLORADO	Well	VARRA #12
Field	WELD COUNTY (NAD83/TRUE NORTH)	Wellbore	VARRA #12 PWB
Facility	SEC.05-T06N-R67W		

## WELLPATH DATA (180 stations) † = interpolated/extrapolated station

MD [ft]	Inclination [°]	Azimuth [°]	TVD [ft]	Vert Sect [ft]	North [ft]	East [ft]	DLS [°/100ft]	Comments
11524.00†	90.000	90.129	7276.00	3516.61	-1128.65	3404.39	0.00	
11624.00†	90.000	90.129	7276.00	3615.89	-1128.88	3504.39	0.00	
11724.00†	90.000	90.129	7276.00	3715.17	-1129.10	3604.39	0.00	
11824.00†	90.000	90.129	7276.00	3814.45	-1129.33	3704.39	0.00	
11924.00†	90.000	90.129	7276.00	3913.73	-1129.55	3804.39	0.00	
12024.00†	90.000	90.129	7276.00	4013.02	-1129.78	3904.38	0.00	
12124.00†	90.000	90.129	7276.00	4112.30	-1130.00	4004.38	0.00	
12224.00†	90.000	90.129	7276.00	4211.58	-1130.22	4104.38	0.00	
12324.00†	90.000	90.129	7276.00	4310.86	-1130.45	4204.38	0.00	
12424.00†	90.000	90.129	7276.00	4410.14	-1130.67	4304.38	0.00	
12524.00†	90.000	90.129	7276.00	4509.42	-1130.90	4404.38	0.00	
12624.00†	90.000	90.129	7276.00	4608.70	-1131.12	4504.38	0.00	
12724.00†	90.000	90.129	7276.00	4707.98	-1131.35	4604.38	0.00	
12824.00†	90.000	90.129	7276.00	4807.26	-1131.57	4704.38	0.00	
12924.00†	90.000	90.129	7276.00	4906.54	-1131.80	4804.38	0.00	
13024.00†	90.000	90.129	7276.00	5005.82	-1132.02	4904.38	0.00	
13124.00†	90.000	90.129	7276.00	5105.10	-1132.25	5004.38	0.00	
13224.00†	90.000	90.129	7276.00	5204.39	-1132.47	5104.38	0.00	
13324.00†	90.000	90.129	7276.00	5303.67	-1132.70	5204.38	0.00	
13424.00†	90.000	90.129	7276.00	5402.95	-1132.92	5304.38	0.00	
13524.00†	90.000	90.129	7276.00	5502.23	-1133.15	5404.38	0.00	
13624.00†	90.000	90.129	7276.00	5601.51	-1133.37	5504.38	0.00	
13724.00†	90.000	90.129	7276.00	5700.79	-1133.60	5604.38	0.00	
13824.00†	90.000	90.129	7276.00	5800.07	-1133.82	5704.38	0.00	
13924.00†	90.000	90.129	7276.00	5899.35	-1134.04	5804.38	0.00	
14024.00†	90.000	90.129	7276.00	5998.63	-1134.27	5904.38	0.00	
14124.00†	90.000	90.129	7276.00	6097.91	-1134.49	6004.38	0.00	
14224.00†	90.000	90.129	7276.00	6197.19	-1134.72	6104.38	0.00	
14324.00†	90.000	90.129	7276.00	6296.47	-1134.94	6204.38	0.00	
14424.00†	90.000	90.129	7276.00	6395.76	-1135.17	6304.38	0.00	



# Planned Wellpath Report

VARRA #12 (REV-A.0) PWP

Page 7 of 8



## REFERENCE WELLPATH IDENTIFICATION

Operator	EXTRACTION OIL & GAS	Slot	SLOT#12 VARRA #12(1459'FSL & 784'FWL,SEC.05)
Area	COLORADO	Well	VARRA #12
Field	WELD COUNTY (NAD83/TRUE NORTH)	Wellbore	VARRA #12 PWB
Facility	SEC.05-T06N-R67W		

## WELLPATH DATA (180 stations) † = interpolated/extrapolated station

MD [ft]	Inclination [°]	Azimuth [°]	TVD [ft]	Vert Sect [ft]	North [ft]	East [ft]	DLS [°/100ft]	Comments
14524.00†	90.000	90.129	7276.00	6495.04	-1135.39	6404.38	0.00	
14624.00†	90.000	90.129	7276.00	6594.32	-1135.62	6504.38	0.00	
14724.00†	90.000	90.129	7276.00	6693.60	-1135.84	6604.38	0.00	
14824.00†	90.000	90.129	7276.00	6792.88	-1136.07	6704.38	0.00	
14924.00†	90.000	90.129	7276.00	6892.16	-1136.29	6804.38	0.00	
15024.00†	90.000	90.129	7276.00	6991.44	-1136.52	6904.38	0.00	
15124.00†	90.000	90.129	7276.00	7090.72	-1136.74	7004.38	0.00	
15224.00†	90.000	90.129	7276.00	7190.00	-1136.97	7104.38	0.00	
15324.00†	90.000	90.129	7276.00	7289.28	-1137.19	7204.38	0.00	
15424.00†	90.000	90.129	7276.00	7388.56	-1137.42	7304.38	0.00	
15524.00†	90.000	90.129	7276.00	7487.85	-1137.64	7404.38	0.00	
15624.00†	90.000	90.129	7276.00	7587.13	-1137.86	7504.38	0.00	
15724.00†	90.000	90.129	7276.00	7686.41	-1138.09	7604.38	0.00	
15824.00†	90.000	90.129	7276.00	7785.69	-1138.31	7704.38	0.00	
15924.00†	90.000	90.129	7276.00	7884.97	-1138.54	7804.37	0.00	
16024.00†	90.000	90.129	7276.00	7984.25	-1138.76	7904.37	0.00	
16124.00†	90.000	90.129	7276.00	8083.53	-1138.99	8004.37	0.00	
16224.00†	90.000	90.129	7276.00	8182.81	-1139.21	8104.37	0.00	
16324.00†	90.000	90.129	7276.00	8282.09	-1139.44	8204.37	0.00	
16424.00†	90.000	90.129	7276.00	8381.37	-1139.66	8304.37	0.00	
16524.00†	90.000	90.129	7276.00	8480.65	-1139.89	8404.37	0.00	
16624.00†	90.000	90.129	7276.00	8579.93	-1140.11	8504.37	0.00	
16724.00†	90.000	90.129	7276.00	8679.22	-1140.34	8604.37	0.00	
16824.00†	90.000	90.129	7276.00	8778.50	-1140.56	8704.37	0.00	
16924.00†	90.000	90.129	7276.00	8877.78	-1140.79	8804.37	0.00	
17024.00†	90.000	90.129	7276.00	8977.06	-1141.01	8904.37	0.00	
17124.00†	90.000	90.129	7276.00	9076.34	-1141.24	9004.37	0.00	
17224.00†	90.000	90.129	7276.00	9175.62	-1141.46	9104.37	0.00	
17324.00†	90.000	90.129	7276.00	9274.90	-1141.68	9204.37	0.00	
17413.82	90.000	90.129	7276.00 <sup>2</sup>	9364.08	-1141.89	9294.19	0.00	End of Tangent





# Planned Wellpath Report

VARRA #12 (REV-A.0) PWP

Page 8 of 8



## REFERENCE WELLPATH IDENTIFICATION

Operator	EXTRACTION OIL & GAS	Slot	SLOT#12 VARRA #12(1459'FSL & 784'FWL,SEC.05)
Area	COLORADO	Well	VARRA #12
Field	WELD COUNTY (NAD83/TRUE NORTH)	Wellbore	VARRA #12 PWB
Facility	SEC.05-T06N-R67W		

## HOLE & CASING SECTIONS - Ref Wellbore: VARRA #12 PWB Ref Wellpath: VARRA #12 (REV-A.0) PWP

String/Diameter	Start MD [ft]	End MD [ft]	Interval [ft]	Start TVD [ft]	End TVD [ft]	Start N/S [ft]	Start E/W [ft]	End N/S [ft]	End E/W [ft]
7in Casing Intermediate	24.00	7816.20	7792.20	24.00	7276.00	0.00	0.00	-1120.32	-303.40

## TARGETS

Name	MD [ft]	TVD [ft]	North [ft]	East [ft]	Grid East [US ft]	Grid North [US ft]	Latitude	Longitude	Shape
VARRA PAD SECTION 04		0.00	285.95	1.92	3160186.77	1430380.18	40°30'48.118"N	104°55'25.957"W	polygon
VARRA PAD SECTION 05		0.00	285.95	1.92	3160186.77	1430380.18	40°30'48.118"N	104°55'25.957"W	polygon
2) VARRA #12 BHL ON PLAT REV-1(160'FSL & 460'FEL,SEC.04	17413.82	7276.00	-1141.89	9294.19	3169487.81	1429012.79	40°30'33.991"N	104°53'25.656"W	point
1) VARRA #12 LANDING POINT	7816.20	7276.00	-1120.32	-303.41	3159890.60	1428972.01	40°30'34.222"N	104°55'29.910"W	point
VARRA PAD SOUTH 1/4 HARDLINES(460'SETBACKS)		7420.00	285.95	1.92	3160186.77	1430380.18	40°30'48.118"N	104°55'25.957"W	polygon

## SURVEY PROGRAM - Ref Wellbore: VARRA #12 PWB Ref Wellpath: VARRA #12 (REV-A.0) PWP

Start MD [ft]	End MD [ft]	Positional Uncertainty Model	Log Name/Comment	Wellbore
24.00	18000.00	NaviTrak (Standard)		VARRA #12 PWB