

EXTRACTION OIL & GAS

Location: COLORADO Slot: SLOT#11 VARRA #11(1485'FSL & 785'FWL,SEC.05)
Field: WELD COUNTY (NAD83/TRUE NORTH) Well: VARRA #11
Facility: SEC.05-T06N-R67W Wellbore: VARRA #11 PWB

Plot reference wellpath is VARRA #11 (REV-A.0) PWP

True vertical depths are referenced to RIG (RKB)	Grid System: NAD83 / Lambert Colorado SP, Northern Zone (501), US feet
Measured depths are referenced to RIG (RKB)	North Reference: True north
RIG (RKB) to Mean Sea Level: 4898 feet	Scale: True distance
Mean Sea Level to Mud line (At Slot: SLOT#11 VARRA #11(1485'FSL & 785'FWL,SEC.05)): 0 feet	Depths are in feet
Coordinates are in feet referenced to Slot	Created by: painsetr on 4/29/2014

Location Information

Facility Name			Grid East (US ft)	Grid North (US ft)	Latitude	Longitude
SEC.05-T06N-R67W			3160186.786	1430380.222	40°30'48.118"N	104°55'25.957"W
Slot	Local N (ft)	Local E (ft)	Grid East (US ft)	Grid North (US ft)	Latitude	Longitude
SLOT#11 VARRA #11(1485FSL & 785FWL,SEC.05)	-260.18	-1.70	3160186.778	1430120.041	40°30'45.547"N	104°55'25.979"W
RIG (RKB) to Mud line (At Slot: SLOT#11 VARRA #11(1485FSL & 785FWL,SEC.05))					4898ft	
Mean Sea Level to Mud line (At Slot: SLOT#11 VARRA #11(1485FSL & 785FWL,SEC.05))					0ft	
RIG (RKB) to Mean Sea Level					4898ft	

Targets

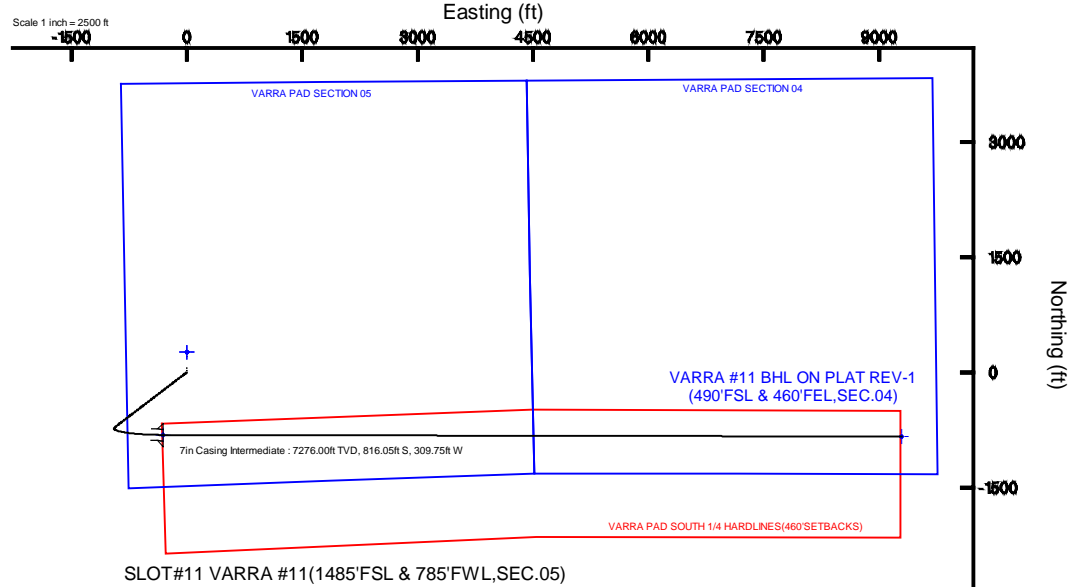
Name	MD (ft)	TVD (ft)	Local N (ft)	Local E (ft)	Grid East (US ft)	Grid North (US ft)	Latitude	Longitude
VARRA PAD SECTION 04		0.00	260.14	1.68	3160186.77	1430380.18	40°30'48.118"N	104°55'25.957"W
VARRA PAD SECTION 05		0.00	260.14	1.68	3160186.77	1430380.18	40°30'48.118"N	104°55'25.957"W
VARRA #11 BHL ON PLAT REV-1(490'FSL & 460'FEL,SEC.04)	17370.11	7276.00	-837.62	9289.67	3169481.37	1429342.82	40°30'37.253"N	104°53'25.710"W
VARRA #11 LANDING POINT	7770.67	7276.00	-816.05	-309.75	3159882.35	1429302.02	40°30'37.483"N	104°55'29.989"W
VARRA PAD SOUTH 1/4 HARDLINE(460'SETBACKS)		7420.00	260.14	1.68	3160186.77	1430380.18	40°30'48.118"N	104°55'25.957"W

Survey Program

Start MD (ft)	End MD (ft)	Tool	Model	Log Name/Comment	Wellbore
24.00	18000.00	NaviTrak	NaviTrak (Standard)		VARRA #11 PWB

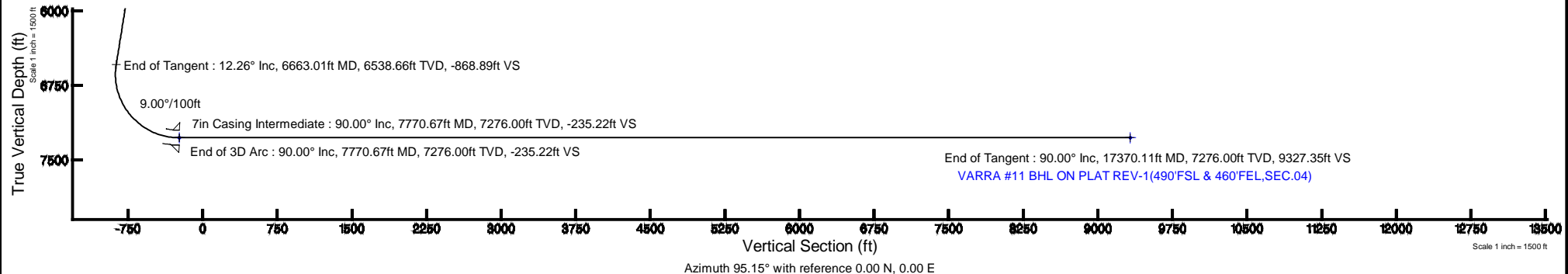
Well Profile Data

Design Comment	MD (ft)	Inc (°)	Az (°)	TVD (ft)	Local N (ft)	Local E (ft)	DLS (°/100ft)	VS (ft)
Tie On	24.00	0.000	232.578	24.00	0.00	0.00	0.00	0.00
End of Tangent	800.00	0.000	232.578	800.00	0.00	0.00	0.00	0.00
End of Build	1412.86	12.257	232.578	1408.20	-39.68	-51.86	2.00	-48.09
End of Tangent	6663.01	12.257	232.578	6538.66	-717.01	-937.07	0.00	-868.89
End of 3D Arc	7770.67	90.000	90.129	7276.00	-816.05	-309.75	9.00	-235.22
End of Tangent	17370.11	90.000	90.129	7276.00	-837.62	9289.67	0.00	9327.35



BGGM (1945.0 to 2015.0) Dip: 67.00° Field: 52835.3 nT
Magnetic North is 8.62 degrees East of True North (at 4/17/2014)

To correct azimuth from Magnetic to True add 8.62 degrees





Planned Wellpath Report

VARRA #11 (REV-A.0) PWP

Page 1 of 8



REFERENCE WELLPATH IDENTIFICATION

Operator	EXTRACTION OIL & GAS	Slot	SLOT#11 VARRA #11(1485'FSL & 785'FWL,SEC.05)
Area	COLORADO	Well	VARRA #11
Field	WELD COUNTY (NAD83/TRUE NORTH)	Wellbore	VARRA #11 PWB
Facility	SEC.05-T06N-R67W		

REPORT SETUP INFORMATION

Projection System	NAD83 / Lambert Colorado SP, Northern Zone (501), US feet	Software System	WellArchitect® 4.0.0
North Reference	True	User	Painsetr
Scale	0.999967	Report Generated	4/29/2014 at 2:45:43 PM
Convergence at slot	n/a	Database/Source file	WA_Denver/VARRA_#11_PWB.xml

WELLPATH LOCATION

	Local coordinates		Grid coordinates		Geographic coordinates	
	North[ft]	East[ft]	Easting[US ft]	Northing[US ft]	Latitude	Longitude
Slot Location	-260.18	-1.70	3160186.78	1430120.04	40°30'45.547"N	104°55'25.979"W
Facility Reference Pt			3160186.79	1430380.22	40°30'48.118"N	104°55'25.957"W
Field Reference Pt			3185481.27	1419166.81	40°28'55.560"N	104°49'59.556"W

WELLPATH DATUM

Calculation method	Minimum curvature	RIG (RKB) to Facility Vertical Datum	4898.00ft
Horizontal Reference Pt	Slot	RIG (RKB) to Mean Sea Level	4898.00ft
Vertical Reference Pt	RIG (RKB)	RIG (RKB) to Mud Line at Slot (SLOT#11 VARRA #11(1485'FSL & 785'FWL,SEC.05))	4898.00ft
MD Reference Pt	RIG (RKB)	Section Origin	N 0.00, E 0.00 ft
Field Vertical Reference	Mean Sea Level	Section Azimuth	95.15°



Planned Wellpath Report

VARRA #11 (REV-A.0) PWP

Page 2 of 8



REFERENCE WELLPATH IDENTIFICATION

Operator	EXTRACTION OIL & GAS	Slot	SLOT#11 VARRA #11(1485'FSL & 785'FWL,SEC.05)
Area	COLORADO	Well	VARRA #11
Field	WELD COUNTY (NAD83/TRUE NORTH)	Wellbore	VARRA #11 PWB
Facility	SEC.05-T06N-R67W		

WELLPATH DATA (180 stations) † = interpolated/extrapolated station

MD [ft]	Inclination [°]	Azimuth [°]	TVD [ft]	Vert Sect [ft]	North [ft]	East [ft]	DLS [°/100ft]	Comments
0.00†	0.000	232.578	0.00	0.00	0.00	0.00	0.00	
24.00	0.000	232.578	24.00	0.00	0.00	0.00	0.00	Tie On
124.00†	0.000	232.578	124.00	0.00	0.00	0.00	0.00	
224.00†	0.000	232.578	224.00	0.00	0.00	0.00	0.00	
324.00†	0.000	232.578	324.00	0.00	0.00	0.00	0.00	
424.00†	0.000	232.578	424.00	0.00	0.00	0.00	0.00	
524.00†	0.000	232.578	524.00	0.00	0.00	0.00	0.00	
624.00†	0.000	232.578	624.00	0.00	0.00	0.00	0.00	
724.00†	0.000	232.578	724.00	0.00	0.00	0.00	0.00	
800.00	0.000	232.578	800.00	0.00	0.00	0.00	0.00	End of Tangent
824.00†	0.480	232.578	824.00	-0.07	-0.06	-0.08	2.00	
924.00†	2.480	232.578	923.96	-1.98	-1.63	-2.13	2.00	
1024.00†	4.480	232.578	1023.77	-6.45	-5.32	-6.95	2.00	
1124.00†	6.480	232.578	1123.31	-13.48	-11.12	-14.54	2.00	
1224.00†	8.480	232.578	1222.45	-23.06	-19.03	-24.87	2.00	
1324.00†	10.480	232.578	1321.08	-35.19	-29.04	-37.95	2.00	
1412.86	12.257	232.578	1408.20	-48.09	-39.68	-51.86	2.00	End of Build
1424.00†	12.257	232.578	1419.08	-49.83	-41.12	-53.74	0.00	
1524.00†	12.257	232.578	1516.80	-65.47	-54.02	-70.60	0.00	
1624.00†	12.257	232.578	1614.52	-81.10	-66.92	-87.46	0.00	
1724.00†	12.257	232.578	1712.24	-96.73	-79.82	-104.32	0.00	
1824.00†	12.257	232.578	1809.96	-112.37	-92.73	-121.18	0.00	
1924.00†	12.257	232.578	1907.68	-128.00	-105.63	-138.04	0.00	
2024.00†	12.257	232.578	2005.40	-143.64	-118.53	-154.91	0.00	
2124.00†	12.257	232.578	2103.13	-159.27	-131.43	-171.77	0.00	
2224.00†	12.257	232.578	2200.85	-174.90	-144.33	-188.63	0.00	
2324.00†	12.257	232.578	2298.57	-190.54	-157.23	-205.49	0.00	
2424.00†	12.257	232.578	2396.29	-206.17	-170.13	-222.35	0.00	
2524.00†	12.257	232.578	2494.01	-221.80	-183.03	-239.21	0.00	
2624.00†	12.257	232.578	2591.73	-237.44	-195.94	-256.07	0.00	



Planned Wellpath Report

VARRA #11 (REV-A.0) PWP

Page 3 of 8



REFERENCE WELLPATH IDENTIFICATION

Operator	EXTRACTION OIL & GAS	Slot	SLOT#11 VARRA #11(1485'FSL & 785'FWL,SEC.05)
Area	COLORADO	Well	VARRA #11
Field	WELD COUNTY (NAD83/TRUE NORTH)	Wellbore	VARRA #11 PWB
Facility	SEC.05-T06N-R67W		

WELLPATH DATA (180 stations) † = interpolated/extrapolated station

MD [ft]	Inclination [°]	Azimuth [°]	TVD [ft]	Vert Sect [ft]	North [ft]	East [ft]	DLS [°/100ft]	Comments
2724.00†	12.257	232.578	2689.45	-253.07	-208.84	-272.93	0.00	
2824.00†	12.257	232.578	2787.17	-268.71	-221.74	-289.79	0.00	
2924.00†	12.257	232.578	2884.89	-284.34	-234.64	-306.65	0.00	
3024.00†	12.257	232.578	2982.61	-299.97	-247.54	-323.51	0.00	
3124.00†	12.257	232.578	3080.33	-315.61	-260.44	-340.37	0.00	
3224.00†	12.257	232.578	3178.05	-331.24	-273.34	-357.23	0.00	
3324.00†	12.257	232.578	3275.77	-346.88	-286.24	-374.09	0.00	
3424.00†	12.257	232.578	3373.49	-362.51	-299.14	-390.95	0.00	
3524.00†	12.257	232.578	3471.21	-378.14	-312.05	-407.81	0.00	
3624.00†	12.257	232.578	3568.93	-393.78	-324.95	-424.67	0.00	
3724.00†	12.257	232.578	3666.65	-409.41	-337.85	-441.53	0.00	
3824.00†	12.257	232.578	3764.37	-425.04	-350.75	-458.39	0.00	
3924.00†	12.257	232.578	3862.09	-440.68	-363.65	-475.26	0.00	
4024.00†	12.257	232.578	3959.81	-456.31	-376.55	-492.12	0.00	
4124.00†	12.257	232.578	4057.53	-471.95	-389.45	-508.98	0.00	
4224.00†	12.257	232.578	4155.25	-487.58	-402.35	-525.84	0.00	
4324.00†	12.257	232.578	4252.97	-503.21	-415.25	-542.70	0.00	
4424.00†	12.257	232.578	4350.70	-518.85	-428.16	-559.56	0.00	
4524.00†	12.257	232.578	4448.42	-534.48	-441.06	-576.42	0.00	
4624.00†	12.257	232.578	4546.14	-550.12	-453.96	-593.28	0.00	
4724.00†	12.257	232.578	4643.86	-565.75	-466.86	-610.14	0.00	
4824.00†	12.257	232.578	4741.58	-581.38	-479.76	-627.00	0.00	
4924.00†	12.257	232.578	4839.30	-597.02	-492.66	-643.86	0.00	
5024.00†	12.257	232.578	4937.02	-612.65	-505.56	-660.72	0.00	
5124.00†	12.257	232.578	5034.74	-628.28	-518.46	-677.58	0.00	
5224.00†	12.257	232.578	5132.46	-643.92	-531.36	-694.44	0.00	
5324.00†	12.257	232.578	5230.18	-659.55	-544.27	-711.30	0.00	
5424.00†	12.257	232.578	5327.90	-675.19	-557.17	-728.16	0.00	
5524.00†	12.257	232.578	5425.62	-690.82	-570.07	-745.02	0.00	
5624.00†	12.257	232.578	5523.34	-706.45	-582.97	-761.88	0.00	



Planned Wellpath Report

VARRA #11 (REV-A.0) PWP

Page 4 of 8



REFERENCE WELLPATH IDENTIFICATION

Operator	EXTRACTION OIL & GAS	Slot	SLOT#11 VARRA #11(1485'FSL & 785'FWL,SEC.05)
Area	COLORADO	Well	VARRA #11
Field	WELD COUNTY (NAD83/TRUE NORTH)	Wellbore	VARRA #11 PWB
Facility	SEC.05-T06N-R67W		

WELLPATH DATA (180 stations) † = interpolated/extrapolated station

MD [ft]	Inclination [°]	Azimuth [°]	TVD [ft]	Vert Sect [ft]	North [ft]	East [ft]	DLS [°/100ft]	Comments
5724.00†	12.257	232.578	5621.06	-722.09	-595.87	-778.75	0.00	
5824.00†	12.257	232.578	5718.78	-737.72	-608.77	-795.61	0.00	
5924.00†	12.257	232.578	5816.50	-753.36	-621.67	-812.47	0.00	
6024.00†	12.257	232.578	5914.22	-768.99	-634.57	-829.33	0.00	
6124.00†	12.257	232.578	6011.94	-784.62	-647.48	-846.19	0.00	
6224.00†	12.257	232.578	6109.66	-800.26	-660.38	-863.05	0.00	
6324.00†	12.257	232.578	6207.38	-815.89	-673.28	-879.91	0.00	
6424.00†	12.257	232.578	6305.10	-831.52	-686.18	-896.77	0.00	
6524.00†	12.257	232.578	6402.82	-847.16	-699.08	-913.63	0.00	
6624.00†	12.257	232.578	6500.54	-862.79	-711.98	-930.49	0.00	
6663.01	12.257	232.578	6538.66	-868.89	-717.01	-937.07	0.00	End of Tangent
6724.00†	8.627	209.357	6598.66	-875.54	-724.94	-944.46	9.00	
6824.00†	8.933	147.524	6697.69	-873.87	-738.05	-943.96	9.00	
6924.00†	15.691	118.250	6795.42	-856.66	-751.03	-927.85	9.00	
7024.00†	23.951	107.471	6889.45	-824.32	-763.55	-896.51	9.00	
7124.00†	32.590	102.082	6977.45	-777.66	-775.31	-850.72	9.00	
7224.00†	41.370	98.776	7057.27	-717.82	-786.01	-791.61	9.00	
7324.00†	50.217	96.459	7126.93	-646.28	-795.39	-720.62	9.00	
7424.00†	59.099	94.674	7184.72	-564.80	-803.22	-639.51	9.00	
7524.00†	68.002	93.195	7229.21	-475.38	-809.32	-550.28	9.00	
7624.00†	76.916	91.892	7259.32	-380.23	-813.52	-455.12	9.00	
7724.00†	85.836	90.681	7274.30	-281.69	-815.72	-356.38	9.00	
7770.67	90.000	90.129	7276.00 [†]	-235.22	-816.05	-309.75	9.00	End of 3D Arc
7824.00†	90.000	90.129	7276.00	-182.09	-816.17	-256.42	0.00	
7924.00†	90.000	90.129	7276.00	-82.48	-816.40	-156.42	0.00	
8024.00†	90.000	90.129	7276.00	17.14	-816.62	-56.42	0.00	
8124.00†	90.000	90.129	7276.00	116.75	-816.85	43.58	0.00	
8224.00†	90.000	90.129	7276.00	216.37	-817.07	143.58	0.00	
8324.00†	90.000	90.129	7276.00	315.99	-817.30	243.58	0.00	
8424.00†	90.000	90.129	7276.00	415.60	-817.52	343.58	0.00	



Planned Wellpath Report

VARRA #11 (REV-A.0) PWP

Page 5 of 8



REFERENCE WELLPATH IDENTIFICATION

Operator	EXTRACTION OIL & GAS	Slot	SLOT#11 VARRA #11(1485'FSL & 785'FWL,SEC.05)
Area	COLORADO	Well	VARRA #11
Field	WELD COUNTY (NAD83/TRUE NORTH)	Wellbore	VARRA #11 PWB
Facility	SEC.05-T06N-R67W		

WELLPATH DATA (180 stations) † = interpolated/extrapolated station

MD [ft]	Inclination [°]	Azimuth [°]	TVD [ft]	Vert Sect [ft]	North [ft]	East [ft]	DLS [°/100ft]	Comments
8524.00†	90.000	90.129	7276.00	515.22	-817.75	443.57	0.00	
8624.00†	90.000	90.129	7276.00	614.83	-817.97	543.57	0.00	
8724.00†	90.000	90.129	7276.00	714.45	-818.19	643.57	0.00	
8824.00†	90.000	90.129	7276.00	814.07	-818.42	743.57	0.00	
8924.00†	90.000	90.129	7276.00	913.68	-818.64	843.57	0.00	
9024.00†	90.000	90.129	7276.00	1013.30	-818.87	943.57	0.00	
9124.00†	90.000	90.129	7276.00	1112.91	-819.09	1043.57	0.00	
9224.00†	90.000	90.129	7276.00	1212.53	-819.32	1143.57	0.00	
9324.00†	90.000	90.129	7276.00	1312.15	-819.54	1243.57	0.00	
9424.00†	90.000	90.129	7276.00	1411.76	-819.77	1343.57	0.00	
9524.00†	90.000	90.129	7276.00	1511.38	-819.99	1443.57	0.00	
9624.00†	90.000	90.129	7276.00	1610.99	-820.22	1543.57	0.00	
9724.00†	90.000	90.129	7276.00	1710.61	-820.44	1643.57	0.00	
9824.00†	90.000	90.129	7276.00	1810.22	-820.67	1743.57	0.00	
9924.00†	90.000	90.129	7276.00	1909.84	-820.89	1843.57	0.00	
10024.00†	90.000	90.129	7276.00	2009.46	-821.12	1943.57	0.00	
10124.00†	90.000	90.129	7276.00	2109.07	-821.34	2043.57	0.00	
10224.00†	90.000	90.129	7276.00	2208.69	-821.56	2143.57	0.00	
10324.00†	90.000	90.129	7276.00	2308.30	-821.79	2243.57	0.00	
10424.00†	90.000	90.129	7276.00	2407.92	-822.01	2343.57	0.00	
10524.00†	90.000	90.129	7276.00	2507.54	-822.24	2443.57	0.00	
10624.00†	90.000	90.129	7276.00	2607.15	-822.46	2543.57	0.00	
10724.00†	90.000	90.129	7276.00	2706.77	-822.69	2643.57	0.00	
10824.00†	90.000	90.129	7276.00	2806.38	-822.91	2743.57	0.00	
10924.00†	90.000	90.129	7276.00	2906.00	-823.14	2843.57	0.00	
11024.00†	90.000	90.129	7276.00	3005.62	-823.36	2943.57	0.00	
11124.00†	90.000	90.129	7276.00	3105.23	-823.59	3043.57	0.00	
11224.00†	90.000	90.129	7276.00	3204.85	-823.81	3143.57	0.00	
11324.00†	90.000	90.129	7276.00	3304.46	-824.04	3243.57	0.00	
11424.00†	90.000	90.129	7276.00	3404.08	-824.26	3343.57	0.00	



Planned Wellpath Report

VARRA #11 (REV-A.0) PWP

Page 6 of 8



REFERENCE WELLPATH IDENTIFICATION

Operator	EXTRACTION OIL & GAS	Slot	SLOT#11 VARRA #11(1485'FSL & 785'FWL,SEC.05)
Area	COLORADO	Well	VARRA #11
Field	WELD COUNTY (NAD83/TRUE NORTH)	Wellbore	VARRA #11 PWB
Facility	SEC.05-T06N-R67W		

WELLPATH DATA (180 stations) † = interpolated/extrapolated station

MD [ft]	Inclination [°]	Azimuth [°]	TVD [ft]	Vert Sect [ft]	North [ft]	East [ft]	DLS [°/100ft]	Comments
11524.00†	90.000	90.129	7276.00	3503.69	-824.49	3443.57	0.00	
11624.00†	90.000	90.129	7276.00	3603.31	-824.71	3543.57	0.00	
11724.00†	90.000	90.129	7276.00	3702.93	-824.94	3643.57	0.00	
11824.00†	90.000	90.129	7276.00	3802.54	-825.16	3743.57	0.00	
11924.00†	90.000	90.129	7276.00	3902.16	-825.38	3843.57	0.00	
12024.00†	90.000	90.129	7276.00	4001.77	-825.61	3943.57	0.00	
12124.00†	90.000	90.129	7276.00	4101.39	-825.83	4043.57	0.00	
12224.00†	90.000	90.129	7276.00	4201.01	-826.06	4143.57	0.00	
12324.00†	90.000	90.129	7276.00	4300.62	-826.28	4243.57	0.00	
12424.00†	90.000	90.129	7276.00	4400.24	-826.51	4343.56	0.00	
12524.00†	90.000	90.129	7276.00	4499.85	-826.73	4443.56	0.00	
12624.00†	90.000	90.129	7276.00	4599.47	-826.96	4543.56	0.00	
12724.00†	90.000	90.129	7276.00	4699.09	-827.18	4643.56	0.00	
12824.00†	90.000	90.129	7276.00	4798.70	-827.41	4743.56	0.00	
12924.00†	90.000	90.129	7276.00	4898.32	-827.63	4843.56	0.00	
13024.00†	90.000	90.129	7276.00	4997.93	-827.86	4943.56	0.00	
13124.00†	90.000	90.129	7276.00	5097.55	-828.08	5043.56	0.00	
13224.00†	90.000	90.129	7276.00	5197.16	-828.31	5143.56	0.00	
13324.00†	90.000	90.129	7276.00	5296.78	-828.53	5243.56	0.00	
13424.00†	90.000	90.129	7276.00	5396.40	-828.75	5343.56	0.00	
13524.00†	90.000	90.129	7276.00	5496.01	-828.98	5443.56	0.00	
13624.00†	90.000	90.129	7276.00	5595.63	-829.20	5543.56	0.00	
13724.00†	90.000	90.129	7276.00	5695.24	-829.43	5643.56	0.00	
13824.00†	90.000	90.129	7276.00	5794.86	-829.65	5743.56	0.00	
13924.00†	90.000	90.129	7276.00	5894.48	-829.88	5843.56	0.00	
14024.00†	90.000	90.129	7276.00	5994.09	-830.10	5943.56	0.00	
14124.00†	90.000	90.129	7276.00	6093.71	-830.33	6043.56	0.00	
14224.00†	90.000	90.129	7276.00	6193.32	-830.55	6143.56	0.00	
14324.00†	90.000	90.129	7276.00	6292.94	-830.78	6243.56	0.00	
14424.00†	90.000	90.129	7276.00	6392.56	-831.00	6343.56	0.00	



Planned Wellpath Report

VARRA #11 (REV-A.0) PWP

Page 7 of 8



REFERENCE WELLPATH IDENTIFICATION

Operator	EXTRACTION OIL & GAS	Slot	SLOT#11 VARRA #11(1485'FSL & 785'FWL,SEC.05)
Area	COLORADO	Well	VARRA #11
Field	WELD COUNTY (NAD83/TRUE NORTH)	Wellbore	VARRA #11 PWB
Facility	SEC.05-T06N-R67W		

WELLPATH DATA (180 stations) † = interpolated/extrapolated station

MD [ft]	Inclination [°]	Azimuth [°]	TVD [ft]	Vert Sect [ft]	North [ft]	East [ft]	DLS [°/100ft]	Comments
14524.00†	90.000	90.129	7276.00	6492.17	-831.23	6443.56	0.00	
14624.00†	90.000	90.129	7276.00	6591.79	-831.45	6543.56	0.00	
14724.00†	90.000	90.129	7276.00	6691.40	-831.68	6643.56	0.00	
14824.00†	90.000	90.129	7276.00	6791.02	-831.90	6743.56	0.00	
14924.00†	90.000	90.129	7276.00	6890.63	-832.13	6843.56	0.00	
15024.00†	90.000	90.129	7276.00	6990.25	-832.35	6943.56	0.00	
15124.00†	90.000	90.129	7276.00	7089.87	-832.57	7043.56	0.00	
15224.00†	90.000	90.129	7276.00	7189.48	-832.80	7143.56	0.00	
15324.00†	90.000	90.129	7276.00	7289.10	-833.02	7243.56	0.00	
15424.00†	90.000	90.129	7276.00	7388.71	-833.25	7343.56	0.00	
15524.00†	90.000	90.129	7276.00	7488.33	-833.47	7443.56	0.00	
15624.00†	90.000	90.129	7276.00	7587.95	-833.70	7543.56	0.00	
15724.00†	90.000	90.129	7276.00	7687.56	-833.92	7643.56	0.00	
15824.00†	90.000	90.129	7276.00	7787.18	-834.15	7743.56	0.00	
15924.00†	90.000	90.129	7276.00	7886.79	-834.37	7843.56	0.00	
16024.00†	90.000	90.129	7276.00	7986.41	-834.60	7943.56	0.00	
16124.00†	90.000	90.129	7276.00	8086.03	-834.82	8043.56	0.00	
16224.00†	90.000	90.129	7276.00	8185.64	-835.05	8143.56	0.00	
16324.00†	90.000	90.129	7276.00	8285.26	-835.27	8243.56	0.00	
16424.00†	90.000	90.129	7276.00	8384.87	-835.50	8343.55	0.00	
16524.00†	90.000	90.129	7276.00	8484.49	-835.72	8443.55	0.00	
16624.00†	90.000	90.129	7276.00	8584.10	-835.94	8543.55	0.00	
16724.00†	90.000	90.129	7276.00	8683.72	-836.17	8643.55	0.00	
16824.00†	90.000	90.129	7276.00	8783.34	-836.39	8743.55	0.00	
16924.00†	90.000	90.129	7276.00	8882.95	-836.62	8843.55	0.00	
17024.00†	90.000	90.129	7276.00	8982.57	-836.84	8943.55	0.00	
17124.00†	90.000	90.129	7276.00	9082.18	-837.07	9043.55	0.00	
17224.00†	90.000	90.129	7276.00	9181.80	-837.29	9143.55	0.00	
17324.00†	90.000	90.129	7276.00	9281.42	-837.52	9243.55	0.00	
17370.11	90.000	90.129	7276.00 ²	9327.35	-837.62	9289.67	0.00	End of Tangent



Planned Wellpath Report

VARRA #11 (REV-A.0) PWP

Page 8 of 8



REFERENCE WELLPATH IDENTIFICATION

Operator	EXTRACTION OIL & GAS	Slot	SLOT#11 VARRA #11(1485'FSL & 785'FWL,SEC.05)
Area	COLORADO	Well	VARRA #11
Field	WELD COUNTY (NAD83/TRUE NORTH)	Wellbore	VARRA #11 PWB
Facility	SEC.05-T06N-R67W		

HOLE & CASING SECTIONS - Ref Wellbore: VARRA #11 PWB Ref Wellpath: VARRA #11 (REV-A.0) PWP

String/Diameter	Start MD [ft]	End MD [ft]	Interval [ft]	Start TVD [ft]	End TVD [ft]	Start N/S [ft]	Start E/W [ft]	End N/S [ft]	End E/W [ft]
7in Casing Intermediate	24.00	7770.67	7746.67	24.00	7276.00	0.00	0.00	-816.05	-309.75

TARGETS

Name	MD [ft]	TVD [ft]	North [ft]	East [ft]	Grid East [US ft]	Grid North [US ft]	Latitude	Longitude	Shape
VARRA PAD SECTION 04		0.00	260.14	1.68	3160186.77	1430380.18	40°30'48.118"N	104°55'25.957"W	polygon
VARRA PAD SECTION 05		0.00	260.14	1.68	3160186.77	1430380.18	40°30'48.118"N	104°55'25.957"W	polygon
2) VARRA #11 BHL ON PLAT REV-1(490'FSL & 460'FEL,SEC.04)	17370.11	7276.00	-837.62	9289.67	3169481.37	1429342.82	40°30'37.253"N	104°53'25.710"W	point
1) VARRA #11 LANDING POINT	7770.67	7276.00	-816.05	-309.75	3159882.35	1429302.02	40°30'37.483"N	104°55'29.989"W	point
VARRA PAD SOUTH 1/4 HARDLINES(460'SETBACKS)		7420.00	260.14	1.68	3160186.77	1430380.18	40°30'48.118"N	104°55'25.957"W	polygon

SURVEY PROGRAM - Ref Wellbore: VARRA #11 PWB Ref Wellpath: VARRA #11 (REV-A.0) PWP

Start MD [ft]	End MD [ft]	Positional Uncertainty Model	Log Name/Comment	Wellbore
24.00	18000.00	NaviTrak (Standard)		VARRA #11 PWB