

EXTRACTION OIL & GAS

Location: COLORADO Slot: SLOT#10 VARRA #10(1511'FSL & 786'FWL,SEC.05)
Field: WELD COUNTY (NAD83/TRUE NORTH) Well: VARRA #10
Facility: SEC.05-T06N-R67W Wellbore: VARRA #10 PWB

Plot reference wellpath is VARRA #10 (REV-A.0) PWP

True vertical depths are referenced to RIG (RKB)	Grid System: NAD83 / Lambert Colorado SP, Northern Zone (501), US feet
Measured depths are referenced to RIG (RKB)	North Reference: True north
RIG (RKB) to Mean Sea Level: 4898 feet	Scale: True distance
Mean Sea Level to Mud line (At Slot: SLOT#10 VARRA #10(1511'FSL & 786'FWL,SEC.05)): 0 feet	Depths are in feet
Coordinates are in feet referenced to Slot	Created by: painsetr on 4/29/2014

Location Information

Facility Name	Grid East (US ft)	Grid North (US ft)	Latitude	Longitude
SEC.05-T06N-R67W	3160186.786	1430380.222	40°30'48.118"N	104°55'25.957"W
Slot	Local N (ft)	Local E (ft)	Grid East (US ft)	Grid North (US ft)
SLOT#10 VARRA #10(1511'FSL & 786'FWL,SEC.05)	-233.97	-1.70	3160186.607	1430146.250
RIG (RKB) to Mud line (At Slot: SLOT#10 VARRA #10(1511'FSL & 786'FWL,SEC.05))	4898ft			
Mean Sea Level to Mud line (At Slot: SLOT#10 VARRA #10(1511'FSL & 786'FWL,SEC.05))	0ft			
RIG (RKB) to Mean Sea Level	4898ft			

Targets

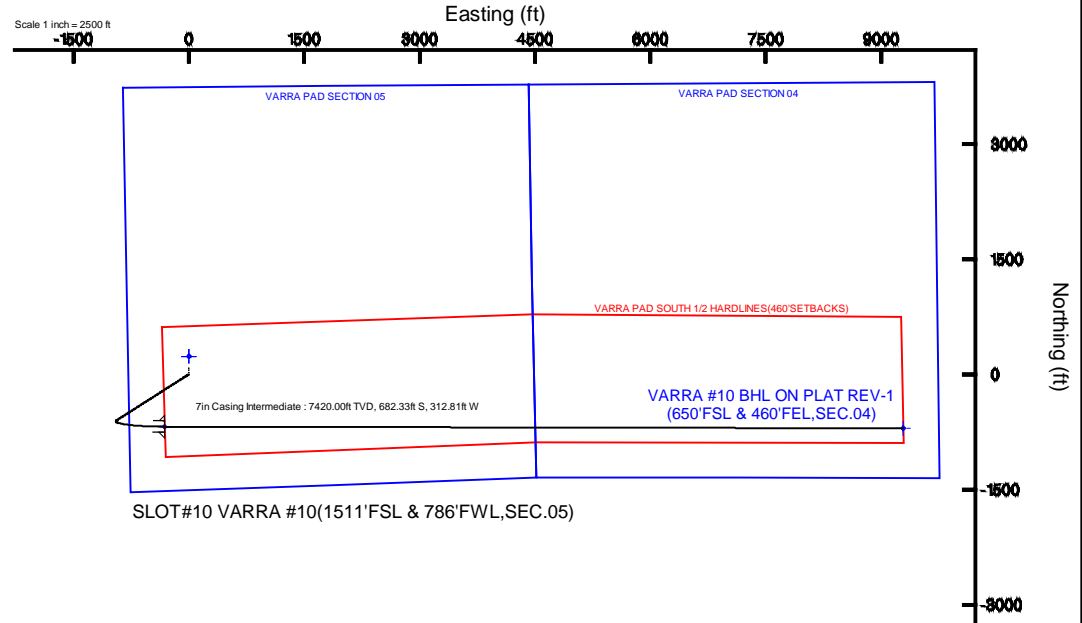
Name	MD (ft)	TVD (ft)	Local N (ft)	Local E (ft)	Grid East (US ft)	Grid North (US ft)	Latitude	Longitude
VARRA PAD SECTION 04		0.00	233.93	1.68	3160186.77	1430380.18	40°30'48.118"N	104°55'25.957"W
VARRA PAD SECTION 05		0.00	233.93	1.68	3160186.77	1430380.18	40°30'48.118"N	104°55'25.957"W
VARRA #10 BHL ON PLAT REV-1(650'FSL & 460'FEL,SEC.04)	17496.72	7420.00	-703.90	9287.38	3160478.04	1429502.73	40°30'38.833"N	104°53'25.739"W
VARRA #10 LANDING POINT	7896.50	7420.00	-682.33	-312.81	3159878.25	1429461.93	40°30'39.064"N	104°55'30.029"W
VARRA PAD SOUTH 1/2 HARDLINE(460'SETBACKS)		7420.00	233.93	1.68	3160186.77	1430380.18	40°30'48.118"N	104°55'25.957"W

Survey Program

Start MD (ft)	End MD (ft)	Tool	Model	Log Name/Comment	Wellbore
24.00	18000.00	NaviTrak	NaviTrak (Standard)		VARRA #10 PWB

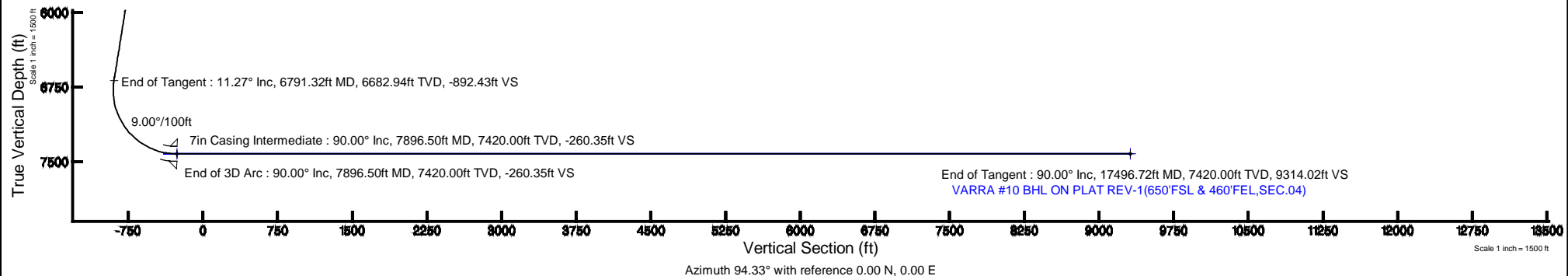
Well Profile Data

Design Comment	MD (ft)	Inc (°)	Az (°)	TVD (ft)	Local N (ft)	Local E (ft)	DLS (°/100ft)	VS (ft)
Tie On	24.00	0.000	237.402	24.00	0.00	0.00	0.00	0.00
End of Tangent	800.00	0.000	237.402	800.00	0.00	0.00	0.00	0.00
End of Build	1363.73	11.275	237.402	1360.10	-29.79	-46.58	2.00	-44.19
End of Tangent	6791.32	11.275	237.402	6682.94	-601.48	-940.58	0.00	-892.43
End of 3D Arc	7896.50	90.000	90.129	7420.00	-682.33	-312.81	9.00	-260.35
End of Tangent	17496.72	90.000	90.129	7420.00	-703.90	9287.38	0.00	9314.02



BGGM (1945.0 to 2015.0) Dip: 67.00° Field: 52835.3 nT
Magnetic North is 8.62 degrees East of True North (at 4/17/2014)

To correct azimuth from Magnetic to True add 8.62 degrees





Planned Wellpath Report

VARRA #10 (REV-A.0) PWP

Page 1 of 8



REFERENCE WELLPATH IDENTIFICATION

Operator	EXTRACTION OIL & GAS	Slot	SLOT#10 VARRA #10(1511'FSL & 786'FWL,SEC.05)
Area	COLORADO	Well	VARRA #10
Field	WELD COUNTY (NAD83/TRUE NORTH)	Wellbore	VARRA #10 PWB
Facility	SEC.05-T06N-R67W		

REPORT SETUP INFORMATION

Projection System	NAD83 / Lambert Colorado SP, Northern Zone (501), US feet	Software System	WellArchitect® 4.0.0
North Reference	True	User	Painsetr
Scale	0.999967	Report Generated	4/29/2014 at 2:42:10 PM
Convergence at slot	n/a	Database/Source file	WA_Denver/VARRA_#10_PWB.xml

WELLPATH LOCATION

	Local coordinates		Grid coordinates		Geographic coordinates	
	North[ft]	East[ft]	Easting[US ft]	Northing[US ft]	Latitude	Longitude
Slot Location	-233.97	-1.70	3160186.61	1430146.25	40°30'45.806"N	104°55'25.979"W
Facility Reference Pt			3160186.79	1430380.22	40°30'48.118"N	104°55'25.957"W
Field Reference Pt			3185481.27	1419166.81	40°28'55.560"N	104°49'59.556"W

WELLPATH DATUM

Calculation method	Minimum curvature	RIG (RKB) to Facility Vertical Datum	4898.00ft
Horizontal Reference Pt	Slot	RIG (RKB) to Mean Sea Level	4898.00ft
Vertical Reference Pt	RIG (RKB)	RIG (RKB) to Mud Line at Slot (SLOT#10 VARRA #10(1511'FSL & 786'FWL,SEC.05))	4898.00ft
MD Reference Pt	RIG (RKB)	Section Origin	N 0.00, E 0.00 ft
Field Vertical Reference	Mean Sea Level	Section Azimuth	94.33°



Planned Wellpath Report

VARRA #10 (REV-A.0) PWP

Page 2 of 8



REFERENCE WELLPATH IDENTIFICATION

Operator	EXTRACTION OIL & GAS	Slot	SLOT#10 VARRA #10(1511'FSL & 786'FWL,SEC.05)
Area	COLORADO	Well	VARRA #10
Field	WELD COUNTY (NAD83/TRUE NORTH)	Wellbore	VARRA #10 PWB
Facility	SEC.05-T06N-R67W		

WELLPATH DATA (181 stations) † = interpolated/extrapolated station

MD [ft]	Inclination [°]	Azimuth [°]	TVD [ft]	Vert Sect [ft]	North [ft]	East [ft]	DLS [°/100ft]	Comments
0.00†	0.000	237.402	0.00	0.00	0.00	0.00	0.00	
24.00	0.000	237.402	24.00	0.00	0.00	0.00	0.00	Tie On
124.00†	0.000	237.402	124.00	0.00	0.00	0.00	0.00	
224.00†	0.000	237.402	224.00	0.00	0.00	0.00	0.00	
324.00†	0.000	237.402	324.00	0.00	0.00	0.00	0.00	
424.00†	0.000	237.402	424.00	0.00	0.00	0.00	0.00	
524.00†	0.000	237.402	524.00	0.00	0.00	0.00	0.00	
624.00†	0.000	237.402	624.00	0.00	0.00	0.00	0.00	
724.00†	0.000	237.402	724.00	0.00	0.00	0.00	0.00	
800.00	0.000	237.402	800.00	0.00	0.00	0.00	0.00	End of Tangent
824.00†	0.480	237.402	824.00	-0.08	-0.05	-0.08	2.00	
924.00†	2.480	237.402	923.96	-2.14	-1.45	-2.26	2.00	
1024.00†	4.480	237.402	1023.77	-7.00	-4.72	-7.37	2.00	
1124.00†	6.480	237.402	1123.31	-14.63	-9.86	-15.42	2.00	
1224.00†	8.480	237.402	1222.45	-25.04	-16.87	-26.39	2.00	
1324.00†	10.480	237.402	1321.08	-38.20	-25.75	-40.26	2.00	
1363.73	11.275	237.402	1360.10	-44.19	-29.79	-46.58	2.00	End of Build
1424.00†	11.275	237.402	1419.21	-53.61	-36.13	-56.50	0.00	
1524.00†	11.275	237.402	1517.28	-69.24	-46.67	-72.98	0.00	
1624.00†	11.275	237.402	1615.35	-84.87	-57.20	-89.45	0.00	
1724.00†	11.275	237.402	1713.42	-100.50	-67.73	-105.92	0.00	
1824.00†	11.275	237.402	1811.49	-116.13	-78.27	-122.39	0.00	
1924.00†	11.275	237.402	1909.56	-131.75	-88.80	-138.86	0.00	
2024.00†	11.275	237.402	2007.63	-147.38	-99.33	-155.33	0.00	
2124.00†	11.275	237.402	2105.70	-163.01	-109.86	-171.80	0.00	
2224.00†	11.275	237.402	2203.77	-178.64	-120.40	-188.28	0.00	
2324.00†	11.275	237.402	2301.84	-194.27	-130.93	-204.75	0.00	
2424.00†	11.275	237.402	2399.91	-209.89	-141.46	-221.22	0.00	
2524.00†	11.275	237.402	2497.98	-225.52	-152.00	-237.69	0.00	
2624.00†	11.275	237.402	2596.05	-241.15	-162.53	-254.16	0.00	



Planned Wellpath Report

VARRA #10 (REV-A.0) PWP

Page 3 of 8



REFERENCE WELLPATH IDENTIFICATION

Operator	EXTRACTION OIL & GAS	Slot	SLOT#10 VARRA #10(1511'FSL & 786'FWL,SEC.05)
Area	COLORADO	Well	VARRA #10
Field	WELD COUNTY (NAD83/TRUE NORTH)	Wellbore	VARRA #10 PWB
Facility	SEC.05-T06N-R67W		

WELLPATH DATA (181 stations) † = interpolated/extrapolated station

MD [ft]	Inclination [°]	Azimuth [°]	TVD [ft]	Vert Sect [ft]	North [ft]	East [ft]	DLS [°/100ft]	Comments
2724.00†	11.275	237.402	2694.12	-256.78	-173.06	-270.63	0.00	
2824.00†	11.275	237.402	2792.19	-272.41	-183.60	-287.10	0.00	
2924.00†	11.275	237.402	2890.26	-288.04	-194.13	-303.58	0.00	
3024.00†	11.275	237.402	2988.33	-303.66	-204.66	-320.05	0.00	
3124.00†	11.275	237.402	3086.40	-319.29	-215.20	-336.52	0.00	
3224.00†	11.275	237.402	3184.47	-334.92	-225.73	-352.99	0.00	
3324.00†	11.275	237.402	3282.54	-350.55	-236.26	-369.46	0.00	
3424.00†	11.275	237.402	3380.61	-366.18	-246.79	-385.93	0.00	
3524.00†	11.275	237.402	3478.68	-381.81	-257.33	-402.40	0.00	
3624.00†	11.275	237.402	3576.75	-397.43	-267.86	-418.88	0.00	
3724.00†	11.275	237.402	3674.82	-413.06	-278.39	-435.35	0.00	
3824.00†	11.275	237.402	3772.89	-428.69	-288.93	-451.82	0.00	
3924.00†	11.275	237.402	3870.96	-444.32	-299.46	-468.29	0.00	
4024.00†	11.275	237.402	3969.03	-459.95	-309.99	-484.76	0.00	
4124.00†	11.275	237.402	4067.10	-475.58	-320.53	-501.23	0.00	
4224.00†	11.275	237.402	4165.17	-491.20	-331.06	-517.70	0.00	
4324.00†	11.275	237.402	4263.24	-506.83	-341.59	-534.18	0.00	
4424.00†	11.275	237.402	4361.31	-522.46	-352.13	-550.65	0.00	
4524.00†	11.275	237.402	4459.38	-538.09	-362.66	-567.12	0.00	
4624.00†	11.275	237.402	4557.45	-553.72	-373.19	-583.59	0.00	
4724.00†	11.275	237.402	4655.52	-569.35	-383.72	-600.06	0.00	
4824.00†	11.275	237.402	4753.59	-584.97	-394.26	-616.53	0.00	
4924.00†	11.275	237.402	4851.66	-600.60	-404.79	-633.00	0.00	
5024.00†	11.275	237.402	4949.73	-616.23	-415.32	-649.47	0.00	
5124.00†	11.275	237.402	5047.80	-631.86	-425.86	-665.95	0.00	
5224.00†	11.275	237.402	5145.87	-647.49	-436.39	-682.42	0.00	
5324.00†	11.275	237.402	5243.94	-663.11	-446.92	-698.89	0.00	
5424.00†	11.275	237.402	5342.01	-678.74	-457.46	-715.36	0.00	
5524.00†	11.275	237.402	5440.08	-694.37	-467.99	-731.83	0.00	
5624.00†	11.275	237.402	5538.15	-710.00	-478.52	-748.30	0.00	



Planned Wellpath Report

VARRA #10 (REV-A.0) PWP

Page 4 of 8



REFERENCE WELLPATH IDENTIFICATION

Operator	EXTRACTION OIL & GAS	Slot	SLOT#10 VARRA #10(1511'FSL & 786'FWL,SEC.05)
Area	COLORADO	Well	VARRA #10
Field	WELD COUNTY (NAD83/TRUE NORTH)	Wellbore	VARRA #10 PWB
Facility	SEC.05-T06N-R67W		

WELLPATH DATA (181 stations) † = interpolated/extrapolated station

MD [ft]	Inclination [°]	Azimuth [°]	TVD [ft]	Vert Sect [ft]	North [ft]	East [ft]	DLS [°/100ft]	Comments
5724.00†	11.275	237.402	5636.22	-725.63	-489.05	-764.77	0.00	
5824.00†	11.275	237.402	5734.29	-741.26	-499.59	-781.25	0.00	
5924.00†	11.275	237.402	5832.36	-756.88	-510.12	-797.72	0.00	
6024.00†	11.275	237.402	5930.43	-772.51	-520.65	-814.19	0.00	
6124.00†	11.275	237.402	6028.50	-788.14	-531.19	-830.66	0.00	
6224.00†	11.275	237.402	6126.57	-803.77	-541.72	-847.13	0.00	
6324.00†	11.275	237.402	6224.64	-819.40	-552.25	-863.60	0.00	
6424.00†	11.275	237.402	6322.71	-835.03	-562.79	-880.07	0.00	
6524.00†	11.275	237.402	6420.78	-850.65	-573.32	-896.55	0.00	
6624.00†	11.275	237.402	6518.85	-866.28	-583.85	-913.02	0.00	
6724.00†	11.275	237.402	6616.92	-881.91	-594.39	-929.49	0.00	
6791.32	11.275	237.402	6682.94	-892.43	-601.48	-940.58	0.00	End of Tangent
6824.00†	8.959	226.996	6715.12	-896.71	-604.93	-945.13	9.00	
6924.00†	6.629	158.165	6814.38	-899.45	-615.62	-948.69	9.00	
7024.00†	13.000	117.958	6912.96	-886.57	-626.28	-936.58	9.00	
7124.00†	21.341	106.142	7008.45	-858.40	-636.63	-909.11	9.00	
7224.00†	30.053	100.865	7098.48	-815.62	-646.43	-866.95	9.00	
7324.00†	38.888	97.808	7180.85	-759.29	-655.43	-811.15	9.00	
7424.00†	47.776	95.742	7253.52	-690.81	-663.42	-743.07	9.00	
7524.00†	56.693	94.190	7314.70	-611.84	-670.19	-664.39	9.00	
7624.00†	65.625	92.928	7362.89	-524.34	-675.58	-577.05	9.00	
7724.00†	74.566	91.834	7396.90	-430.47	-679.46	-483.20	9.00	
7824.00†	83.512	90.831	7415.90	-332.53	-681.72	-385.15	9.00	
7896.50	90.000	90.129	7420.00 [†]	-260.35	-682.33	-312.81	9.00	End of 3D Arc
7924.00†	90.000	90.129	7420.00	-232.92	-682.39	-285.31	0.00	
8024.00†	90.000	90.129	7420.00	-133.19	-682.61	-185.31	0.00	
8124.00†	90.000	90.129	7420.00	-33.46	-682.84	-85.31	0.00	
8224.00†	90.000	90.129	7420.00	66.27	-683.06	14.69	0.00	
8324.00†	90.000	90.129	7420.00	166.00	-683.29	114.69	0.00	
8424.00†	90.000	90.129	7420.00	265.73	-683.51	214.69	0.00	



Planned Wellpath Report

VARRA #10 (REV-A.0) PWP

Page 5 of 8



REFERENCE WELLPATH IDENTIFICATION

Operator	EXTRACTION OIL & GAS	Slot	SLOT#10 VARRA #10(1511'FSL & 786'FWL,SEC.05)
Area	COLORADO	Well	VARRA #10
Field	WELD COUNTY (NAD83/TRUE NORTH)	Wellbore	VARRA #10 PWB
Facility	SEC.05-T06N-R67W		

WELLPATH DATA (181 stations) † = interpolated/extrapolated station

MD [ft]	Inclination [°]	Azimuth [°]	TVD [ft]	Vert Sect [ft]	North [ft]	East [ft]	DLS [°/100ft]	Comments
8524.00†	90.000	90.129	7420.00	365.46	-683.74	314.69	0.00	
8624.00†	90.000	90.129	7420.00	465.19	-683.96	414.69	0.00	
8724.00†	90.000	90.129	7420.00	564.92	-684.19	514.69	0.00	
8824.00†	90.000	90.129	7420.00	664.65	-684.41	614.69	0.00	
8924.00†	90.000	90.129	7420.00	764.38	-684.64	714.69	0.00	
9024.00†	90.000	90.129	7420.00	864.11	-684.86	814.69	0.00	
9124.00†	90.000	90.129	7420.00	963.84	-685.09	914.69	0.00	
9224.00†	90.000	90.129	7420.00	1063.58	-685.31	1014.69	0.00	
9324.00†	90.000	90.129	7420.00	1163.31	-685.53	1114.69	0.00	
9424.00†	90.000	90.129	7420.00	1263.04	-685.76	1214.68	0.00	
9524.00†	90.000	90.129	7420.00	1362.77	-685.98	1314.68	0.00	
9624.00†	90.000	90.129	7420.00	1462.50	-686.21	1414.68	0.00	
9724.00†	90.000	90.129	7420.00	1562.23	-686.43	1514.68	0.00	
9824.00†	90.000	90.129	7420.00	1661.96	-686.66	1614.68	0.00	
9924.00†	90.000	90.129	7420.00	1761.69	-686.88	1714.68	0.00	
10024.00†	90.000	90.129	7420.00	1861.42	-687.11	1814.68	0.00	
10124.00†	90.000	90.129	7420.00	1961.15	-687.33	1914.68	0.00	
10224.00†	90.000	90.129	7420.00	2060.88	-687.56	2014.68	0.00	
10324.00†	90.000	90.129	7420.00	2160.61	-687.78	2114.68	0.00	
10424.00†	90.000	90.129	7420.00	2260.34	-688.01	2214.68	0.00	
10524.00†	90.000	90.129	7420.00	2360.07	-688.23	2314.68	0.00	
10624.00†	90.000	90.129	7420.00	2459.81	-688.46	2414.68	0.00	
10724.00†	90.000	90.129	7420.00	2559.54	-688.68	2514.68	0.00	
10824.00†	90.000	90.129	7420.00	2659.27	-688.90	2614.68	0.00	
10924.00†	90.000	90.129	7420.00	2759.00	-689.13	2714.68	0.00	
11024.00†	90.000	90.129	7420.00	2858.73	-689.35	2814.68	0.00	
11124.00†	90.000	90.129	7420.00	2958.46	-689.58	2914.68	0.00	
11224.00†	90.000	90.129	7420.00	3058.19	-689.80	3014.68	0.00	
11324.00†	90.000	90.129	7420.00	3157.92	-690.03	3114.68	0.00	
11424.00†	90.000	90.129	7420.00	3257.65	-690.25	3214.68	0.00	



Planned Wellpath Report

VARRA #10 (REV-A.0) PWP

Page 6 of 8



REFERENCE WELLPATH IDENTIFICATION

Operator	EXTRACTION OIL & GAS	Slot	SLOT#10 VARRA #10(1511'FSL & 786'FWL,SEC.05)
Area	COLORADO	Well	VARRA #10
Field	WELD COUNTY (NAD83/TRUE NORTH)	Wellbore	VARRA #10 PWB
Facility	SEC.05-T06N-R67W		

WELLPATH DATA (181 stations) † = interpolated/extrapolated station

MD [ft]	Inclination [°]	Azimuth [°]	TVD [ft]	Vert Sect [ft]	North [ft]	East [ft]	DLS [°/100ft]	Comments
11524.00†	90.000	90.129	7420.00	3357.38	-690.48	3314.68	0.00	
11624.00†	90.000	90.129	7420.00	3457.11	-690.70	3414.68	0.00	
11724.00†	90.000	90.129	7420.00	3556.84	-690.93	3514.68	0.00	
11824.00†	90.000	90.129	7420.00	3656.57	-691.15	3614.68	0.00	
11924.00†	90.000	90.129	7420.00	3756.31	-691.38	3714.68	0.00	
12024.00†	90.000	90.129	7420.00	3856.04	-691.60	3814.68	0.00	
12124.00†	90.000	90.129	7420.00	3955.77	-691.83	3914.68	0.00	
12224.00†	90.000	90.129	7420.00	4055.50	-692.05	4014.68	0.00	
12324.00†	90.000	90.129	7420.00	4155.23	-692.27	4114.68	0.00	
12424.00†	90.000	90.129	7420.00	4254.96	-692.50	4214.68	0.00	
12524.00†	90.000	90.129	7420.00	4354.69	-692.72	4314.68	0.00	
12624.00†	90.000	90.129	7420.00	4454.42	-692.95	4414.68	0.00	
12724.00†	90.000	90.129	7420.00	4554.15	-693.17	4514.68	0.00	
12824.00†	90.000	90.129	7420.00	4653.88	-693.40	4614.68	0.00	
12924.00†	90.000	90.129	7420.00	4753.61	-693.62	4714.68	0.00	
13024.00†	90.000	90.129	7420.00	4853.34	-693.85	4814.68	0.00	
13124.00†	90.000	90.129	7420.00	4953.07	-694.07	4914.68	0.00	
13224.00†	90.000	90.129	7420.00	5052.80	-694.30	5014.68	0.00	
13324.00†	90.000	90.129	7420.00	5152.54	-694.52	5114.67	0.00	
13424.00†	90.000	90.129	7420.00	5252.27	-694.75	5214.67	0.00	
13524.00†	90.000	90.129	7420.00	5352.00	-694.97	5314.67	0.00	
13624.00†	90.000	90.129	7420.00	5451.73	-695.20	5414.67	0.00	
13724.00†	90.000	90.129	7420.00	5551.46	-695.42	5514.67	0.00	
13824.00†	90.000	90.129	7420.00	5651.19	-695.64	5614.67	0.00	
13924.00†	90.000	90.129	7420.00	5750.92	-695.87	5714.67	0.00	
14024.00†	90.000	90.129	7420.00	5850.65	-696.09	5814.67	0.00	
14124.00†	90.000	90.129	7420.00	5950.38	-696.32	5914.67	0.00	
14224.00†	90.000	90.129	7420.00	6050.11	-696.54	6014.67	0.00	
14324.00†	90.000	90.129	7420.00	6149.84	-696.77	6114.67	0.00	
14424.00†	90.000	90.129	7420.00	6249.57	-696.99	6214.67	0.00	



Planned Wellpath Report

VARRA #10 (REV-A.0) PWP

Page 7 of 8



REFERENCE WELLPATH IDENTIFICATION

Operator	EXTRACTION OIL & GAS	Slot	SLOT#10 VARRA #10(1511'FSL & 786'FWL,SEC.05)
Area	COLORADO	Well	VARRA #10
Field	WELD COUNTY (NAD83/TRUE NORTH)	Wellbore	VARRA #10 PWB
Facility	SEC.05-T06N-R67W		

WELLPATH DATA (181 stations) † = interpolated/extrapolated station

MD [ft]	Inclination [°]	Azimuth [°]	TVD [ft]	Vert Sect [ft]	North [ft]	East [ft]	DLS [°/100ft]	Comments
14524.00†	90.000	90.129	7420.00	6349.30	-697.22	6314.67	0.00	
14624.00†	90.000	90.129	7420.00	6449.04	-697.44	6414.67	0.00	
14724.00†	90.000	90.129	7420.00	6548.77	-697.67	6514.67	0.00	
14824.00†	90.000	90.129	7420.00	6648.50	-697.89	6614.67	0.00	
14924.00†	90.000	90.129	7420.00	6748.23	-698.12	6714.67	0.00	
15024.00†	90.000	90.129	7420.00	6847.96	-698.34	6814.67	0.00	
15124.00†	90.000	90.129	7420.00	6947.69	-698.57	6914.67	0.00	
15224.00†	90.000	90.129	7420.00	7047.42	-698.79	7014.67	0.00	
15324.00†	90.000	90.129	7420.00	7147.15	-699.02	7114.67	0.00	
15424.00†	90.000	90.129	7420.00	7246.88	-699.24	7214.67	0.00	
15524.00†	90.000	90.129	7420.00	7346.61	-699.46	7314.67	0.00	
15624.00†	90.000	90.129	7420.00	7446.34	-699.69	7414.67	0.00	
15724.00†	90.000	90.129	7420.00	7546.07	-699.91	7514.67	0.00	
15824.00†	90.000	90.129	7420.00	7645.80	-700.14	7614.67	0.00	
15924.00†	90.000	90.129	7420.00	7745.54	-700.36	7714.67	0.00	
16024.00†	90.000	90.129	7420.00	7845.27	-700.59	7814.67	0.00	
16124.00†	90.000	90.129	7420.00	7945.00	-700.81	7914.67	0.00	
16224.00†	90.000	90.129	7420.00	8044.73	-701.04	8014.67	0.00	
16324.00†	90.000	90.129	7420.00	8144.46	-701.26	8114.67	0.00	
16424.00†	90.000	90.129	7420.00	8244.19	-701.49	8214.67	0.00	
16524.00†	90.000	90.129	7420.00	8343.92	-701.71	8314.67	0.00	
16624.00†	90.000	90.129	7420.00	8443.65	-701.94	8414.67	0.00	
16724.00†	90.000	90.129	7420.00	8543.38	-702.16	8514.67	0.00	
16824.00†	90.000	90.129	7420.00	8643.11	-702.39	8614.67	0.00	
16924.00†	90.000	90.129	7420.00	8742.84	-702.61	8714.67	0.00	
17024.00†	90.000	90.129	7420.00	8842.57	-702.83	8814.67	0.00	
17124.00†	90.000	90.129	7420.00	8942.30	-703.06	8914.67	0.00	
17224.00†	90.000	90.129	7420.00	9042.03	-703.28	9014.67	0.00	
17324.00†	90.000	90.129	7420.00	9141.77	-703.51	9114.66	0.00	
17424.00†	90.000	90.129	7420.00	9241.50	-703.73	9214.66	0.00	



Planned Wellpath Report

VARRA #10 (REV-A.0) PWP

Page 8 of 8



REFERENCE WELLPATH IDENTIFICATION

Operator	EXTRACTION OIL & GAS	Slot	SLOT#10 VARRA #10(1511'FSL & 786'FWL,SEC.05)
Area	COLORADO	Well	VARRA #10
Field	WELD COUNTY (NAD83/TRUE NORTH)	Wellbore	VARRA #10 PWB
Facility	SEC.05-T06N-R67W		

WELLPATH DATA (181 stations)

MD [ft]	Inclination [°]	Azimuth [°]	TVD [ft]	Vert Sect [ft]	North [ft]	East [ft]	DLS [°/100ft]	Comments
17496.72	90.000	90.129	7420.00 ²	9314.02	-703.90	9287.38	0.00	End of Tangent

HOLE & CASING SECTIONS - Ref Wellbore: VARRA #10 PWB Ref Wellpath: VARRA #10 (REV-A.0) PWP

String/Diameter	Start MD [ft]	End MD [ft]	Interval [ft]	Start TVD [ft]	End TVD [ft]	Start N/S [ft]	Start E/W [ft]	End N/S [ft]	End E/W [ft]
7in Casing Intermediate	24.00	7896.50	7872.50	24.00	7420.00	0.00	0.00	-682.33	-312.81

TARGETS

Name	MD [ft]	TVD [ft]	North [ft]	East [ft]	Grid East [US ft]	Grid North [US ft]	Latitude	Longitude	Shape
VARRA PAD SECTION 04		0.00	233.93	1.68	3160186.77	1430380.18	40°30'48.118"N	104°55'25.957"W	polygon
VARRA PAD SECTION 05		0.00	233.93	1.68	3160186.77	1430380.18	40°30'48.118"N	104°55'25.957"W	polygon
2) VARRA #10 BHL ON PLAT REV-1(650'FSL & 460'FEL,SEC.04)	17496.72	7420.00	-703.90	9287.38	3169478.04	1429502.73	40°30'38.833"N	104°53'25.739"W	point
1) VARRA #10 LANDING POINT	7896.50	7420.00	-682.33	-312.81	3159878.25	1429461.93	40°30'39.064"N	104°55'30.029"W	point
VARRA PAD SOUTH 1/2 HARDLINES(460'SETBACKS)		7420.00	233.93	1.68	3160186.77	1430380.18	40°30'48.118"N	104°55'25.957"W	polygon

SURVEY PROGRAM - Ref Wellbore: VARRA #10 PWB Ref Wellpath: VARRA #10 (REV-A.0) PWP

Start MD [ft]	End MD [ft]	Positional Uncertainty Model	Log Name/Comment	Wellbore
24.00	18000.00	NaviTrak (Standard)		VARRA #10 PWB