



June 9, 2014

Mr. Matt Lepore, Director
Colorado Oil and Gas Conservation Commission
1120 Lincoln Street, Suite 801
Denver, Colorado 80203

7535 Hilltop Circle
Denver, CO 80221
www.petro-fs.com

**RE: COGCC Rule 318A.e.: Proposed Wellbore Spacing Unit
Varra 7 Well: NWSW, Section 5, Township 6 North, Range 67 West
Weld County, Colorado**

Dear Mr. Lepore:

Extraction Oil and Gas, LLC (Extraction) is planning to drill the above referenced well in accordance with the provisions set out in COGCC Rule 318A.e. Extraction's proposed wellbore spacing unit consists of:

5½ of Section 4, Township 6 North, Range 67 West
5½ of Section 5, Township 6 North, Range 67 West
Containing 640 acres more or less

Extraction is not the only owner within the proposed wellbore spacing unit and has provided notice to the remaining owners within this spacing unit, as required by COGCC Rule 318A.e.(6). Copies of the required notification letters are on file at Extraction's office. The required thirty (30) day notice period has elapsed absent the receipt by Extraction of any objection to their proposal by the owners within the proposed spacing unit for the subject well.

Enclosed is the Proposed Spacing Unit Plat to assist in your review and approval of Extraction's proposed Application for Permit to Drill (APD) for the Varra 7 well. Many thanks for your attention to this matter.

Respectfully,

Jennifer Grosshans
Regulatory Technician
Agent for Extraction Oil and Gas, LLC

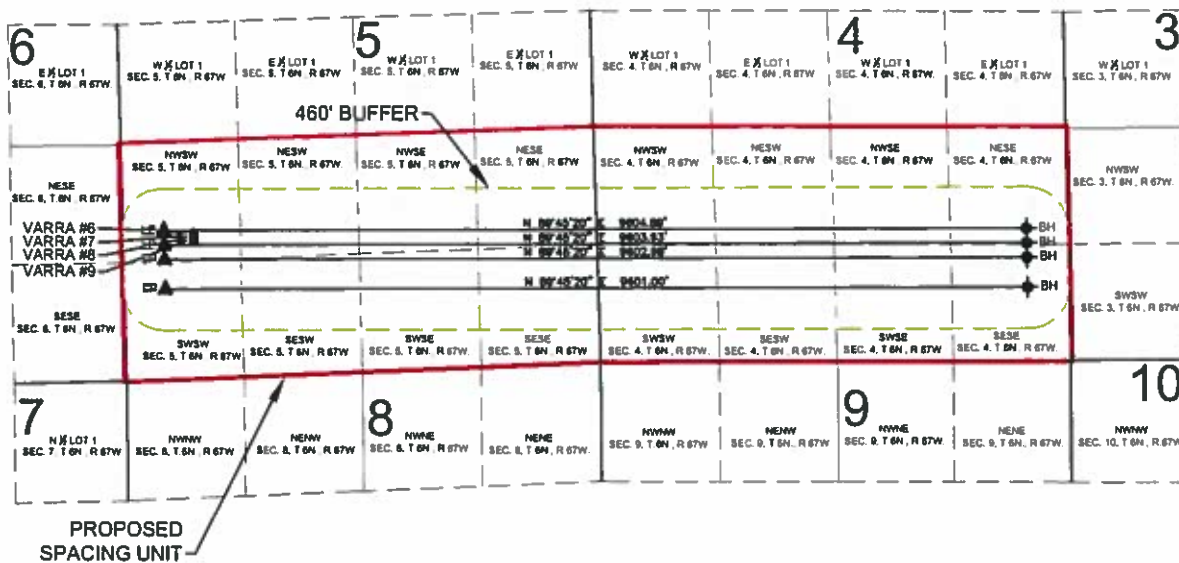
:jg

Enclosure: Proposed Spacing Unit Plat

We are what we repeatedly do. Excellence, then, is not an act, but a habit.

-Aristotle

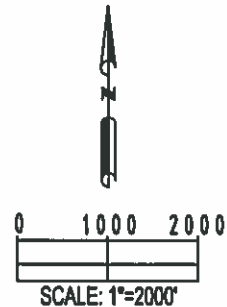
PROPOSED 318A.e. SPACING UNIT
SECTION 4 & 5, TOWNSHIP 6 NORTH, RANGE 67 WEST, 6TH P.M.



WELL NAME	SURFACE FOOTAGES		SURFACE LOCATION (NAD83)	LANDING POINT LOCATION (NAD83)	BOTTOM HOLE LOCATION (NAD83)
VARRA #6	1615' FSL	788' FWL	LATITUDE= 40.513009° LONGITUDE= 104.923880°	LATITUDE= 40.513074° LONGITUDE= 104.925083°	LATITUDE= 40.513011° LONGITUDE= 104.890519°
VARRA #7	1589' FSL	788' FWL	LATITUDE= 40.512938° LONGITUDE= 104.923881°	LATITUDE= 40.512835° LONGITUDE= 104.925052°	LATITUDE= 40.512572° LONGITUDE= 104.890512°
VARRA #8	1563' FSL	787' FWL	LATITUDE= 40.512867° LONGITUDE= 104.923881°	LATITUDE= 40.512196° LONGITUDE= 104.925041°	LATITUDE= 40.512132° LONGITUDE= 104.890505°
VARRA #9	1537' FSL	786' FWL	LATITUDE= 40.512795° LONGITUDE= 104.923882°	LATITUDE= 40.512290° LONGITUDE= 104.925019°	LATITUDE= 40.511227° LONGITUDE= 104.890490°

LEGEND

- = PROPOSED WELL LP = LANDING POINT
 ▲ = LANDING POINT BH = BOTTOM HOLE
 ⊕ = BOTTOM HOLE



SHEET 3 OF 5

PREPARED BY:



FIELD DATE:
03-31-14

DRAWING DATE:
04-14-14

BY:
JLD

**CHECK
JVVJ**

SURFACE LOCATION:

NW 1/4 SW 1/4.

SEC. 5, T6N, R67W, 6TH P.M.

WELD COUNTY, COLORADO